



# AMCL

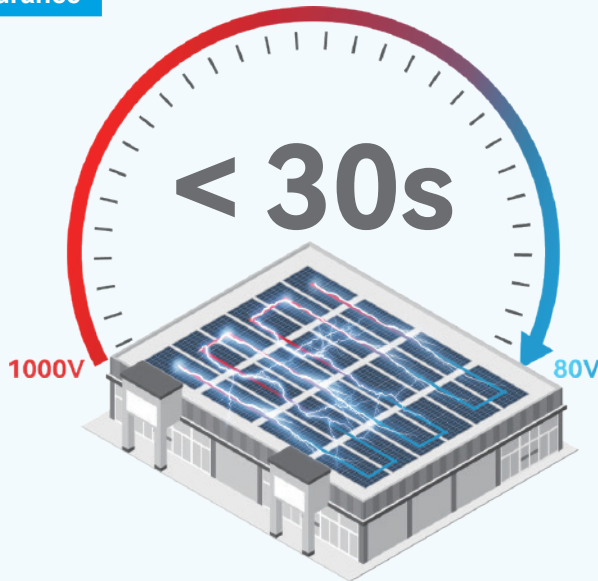
Smart Rapid Shutdown Device

“And” Safe

## Module Level RSD

Compliance to NEC 2017&2020(690.12) regulation

### Safety Assurance



Modul level rapid shutdown, reduced to safe voltage within **30s**, compliance to NEC 2017&2020(690.12) regulation

### Various Shutdown Methods

High Temperature Auto Shutdown



Cloud Platform Remote Shutdown



On-site Physical Manual Shutdown



## Highest Standard of Flame Retardant Grade : V-0

Each material complies with the V-0 flame retardant grade in the U.S. UL94 standard



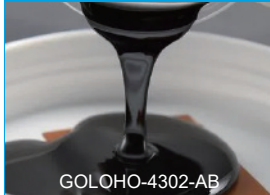
### Casing



Noryl PX9406P

Flame Retardant Grade V-0

### Sealing glue



GOLOHO-4302-AB

Flame Retardant Grade V-0

### DC cable



Flame Retardant Grade V-0

### Terminals



Flame Retardant Grade V-0

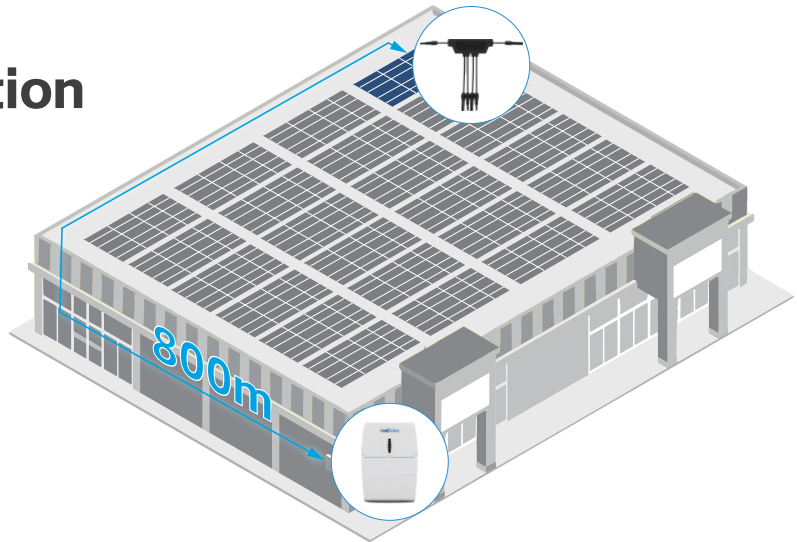
Flame Retardant Grade	Flame Extinguishing time after two 10-second combustion tests	Burning Droplets
HB	Depending on the thickness it may not necessarily burn out within a specific time	Varied
V-2	Extinguished within 60 seconds	Yes
V-1	Extinguished within 60 seconds	No
V-0	Extinguished within 30 seconds	No



# "And" Flexible

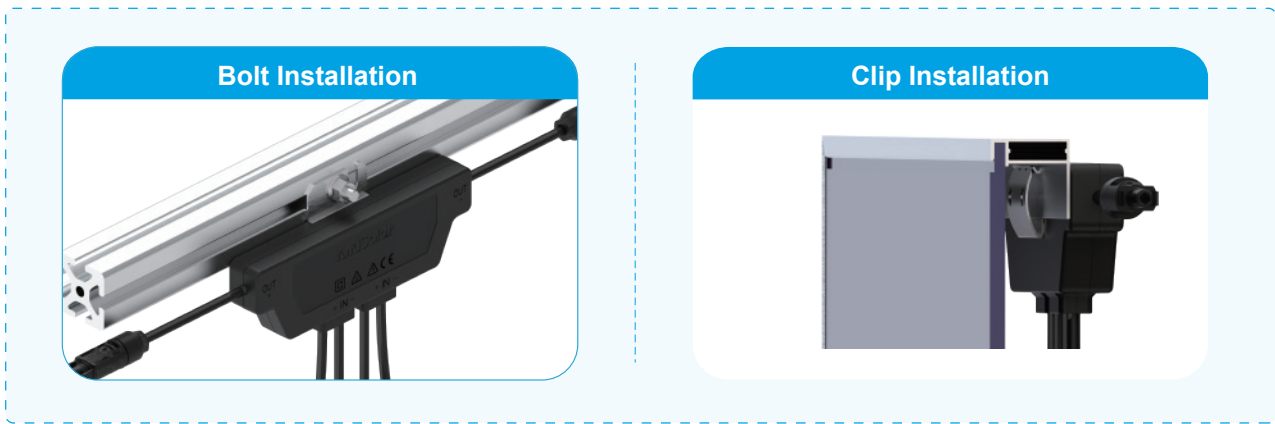
## Max. Communication Distance: 800m

Meeting various type of constructions



## Installation Method

Compatible with clip or bolt installation methods, and installation can be completed within **30s**



# "And" Reliable



Compliance with **UL 1741, UL 3741, IEC 62109-1, IEC 61000** standards and **IP68** protection rating



# Product Parameters

Model	AMCL-A2	AMCL-B2	AMCL-C2
<b>Input Parameters</b>			
Voltage Range	8-80V Single-channel, 120V Dual-channel		
Maximum Input Current	15A	20A	25A
Maximum Short-Circuit Current	30A		
<b>Output Parameters</b>			
Voltage Range	8-120V		
Maximum System Voltage	600/1000/1500V		
Maximum Output Current	15A	20A	25A
Maximum Voltage in Disconnect State	1V		
<b>Structure Parameters</b>			
Dimensions (W*D*H)	180*23*70mm		
Input/Output Connectors	MC4/Compatible with MC4/Customizable		
Input Cable Length	0.6m/1.5m/Customizable		
Output Cable Length	1.4m/Customizable		
Ingress Protection Rating	Type 6P/IP68		
<b>Environment Parameters</b>			
Temperature Range	-40°C~+85°C		
Relative Humidity Range	0~100%		
<b>Other Parameters</b>			
Communication Method	HPLC		
User Interface	WEB+APP		
<b>Certification</b>			
Safety	NEC 2017&2020(690.12), UL 1741, UL 3741, IEC 62109-1		
EMC	FCC Part15, IEC/EN 61000-6-1/-2/-3/-4		

# Product Feature

	Features	AndSolar Smart RSD	Other Brands RSD
<b>Specifications</b>	Compatible PV Current	15 ~ 25A	15A
	Max. Communication Distance	800m	300m
	Working Voltage	10-150V (Two-way)	10-80V (One-way)
<b>Basic Features</b>	Module Level Rapid Shutdown	✓	✓
	Active Safety Protection	✓	✗
	Fault Warning	✓	✗
	Shutdown Method	On-site Shutdown&Remote Shutdown&Active Shutdown	On-site Shutdown
	Control Level	Module Level	String Level
<b>Smart Features</b>	Module Level Data Monitoring	✓	✗
	Graphic Data Display	✓	✗
	Output Curve and Comparison	✓	✗
	Module Level Physical Positioning	✓	✗
	Early Warning Active Protection	✓	✗
	Digital Work Orders	✓	✗
	Fault Analysis	✓	✗
	O&M Strategy Analysis	✓	✗
	System Loss Analysis	✓	✗
	Full Life Cycle Asset Management	✓	✗
Remote Upgrade(OTA)	✓	✗	



## AndSolar Technology Co., Ltd.

📍 8F, Block B, Building 1, 286 Qinglonggang Road,  
Suzhou City, Jiangsu Province, P. R. China

☎ +86-512-8718 7882

🌐 [www.andsolartech.com](http://www.andsolartech.com)

✉ [sales@andsolartech.com](mailto:sales@andsolartech.com)



Facebook



LinkedIn