






# AMCL

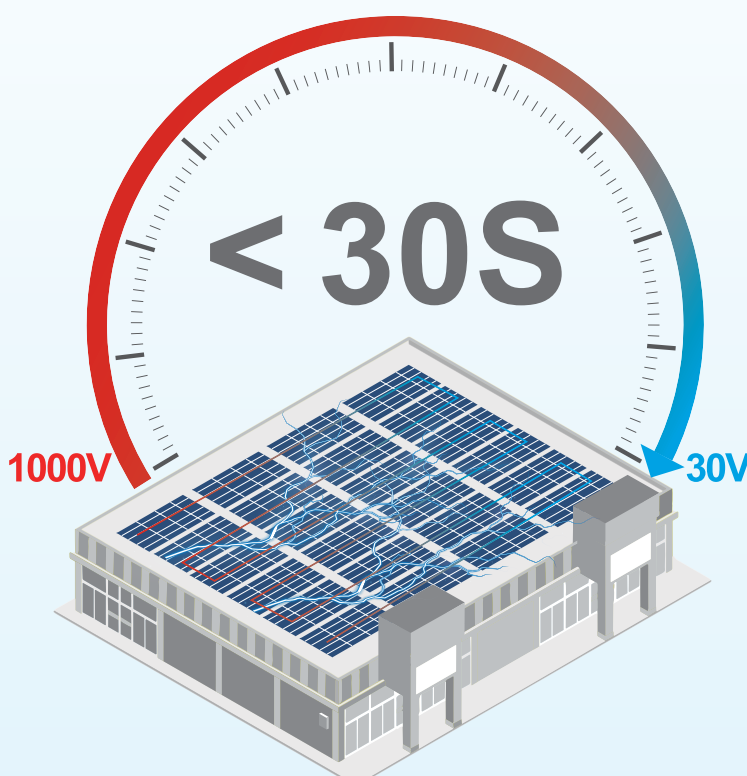
## Smart Rapid Shutdown Device

 Multi-layer Protection  Smart Monitoring  Quick Installation  Flexible Design

# Multi-layer Protection

Protect the safety of the power plant

## Module-level RSD



Decrease to safe voltage within **30S**  
compliance to NEC 2017/2020/2023(690.12) regulation

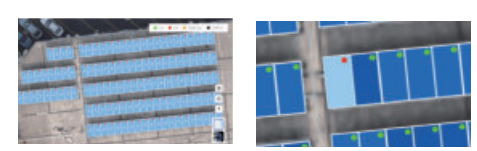
## Active and passive safety strategy

### High Temperature Auto Shutdown

- Real-time monitoring of device data
- Send warning information
- Issue shutdown command

Cloud Platform Response

### Cloud Platform Remote Shutdown



Shutdown the power plant      Shutdown one module

### On-site Manual Shutdown

Respond to emergencies immediately to ensure safety



## Highest Standard of Flame Retardant Grade : 5VA

Product complies with the 5VA flame retardant grade in the US UL94 standard



- Casing**  

- Sealing glue**  

- DC cable**  

- Terminals**  


# Smart Monitoring

Comprehensive understanding of every PV module

## Significantly improve O&M efficiency by 50%

- Reducing inspection frequency by module-level data monitoring

### Traditional solution

Traditional photovoltaic power plants have low monitoring accuracy, and maintenance teams are required to conduct on-site inspections 2-3 times per quarter to ensure safety

2~3 times/quarter

VS

### AndSolar solution

AndCloud 3.0 enables real-time monitoring of your PV system and module operation status, reducing inspection frequency

1 time/quarter



- 1:1 restoration of the actual power plant scene, remote troubleshooting

### Traditional troubleshooting

If the capacity is 200kW with 350 modules, the investigation is expected to take 4 hours

4+ hours

VS

### Remote troubleshooting

AndCloud 3.0→Warning List→Plant Details→Fault Location  
More helpful for large-scale and operationally inconvenient projects

5 mins



- Module-level management, remote shutdown low-efficiency or faulty modules and improve revenue

### Traditional management method

Unable to shutdown low efficiency modules in a timely manner results in reduced power generation efficiency of the power plant, requiring manual O&M, and increasing operating costs



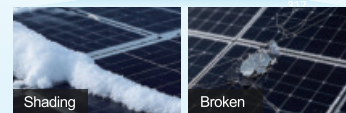
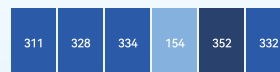
Reduce power plant revenue

VS

### Module-level management

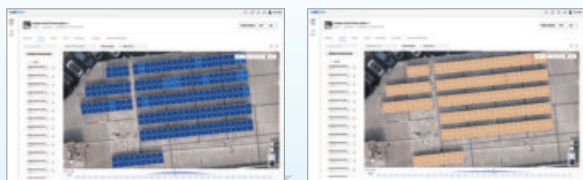
The faulty modules can be shutdown in time to improve the power generation efficiency, and the power plant problems can be solved together to save O&M costs

Improve power plant revenue



## Precise Module-level monitoring around 24/7

- Data playback and locate problems



Replay daily operating data to identify potential problems in power plants

- Maximize ROI with AI integrated

\*Launching in H2 2026

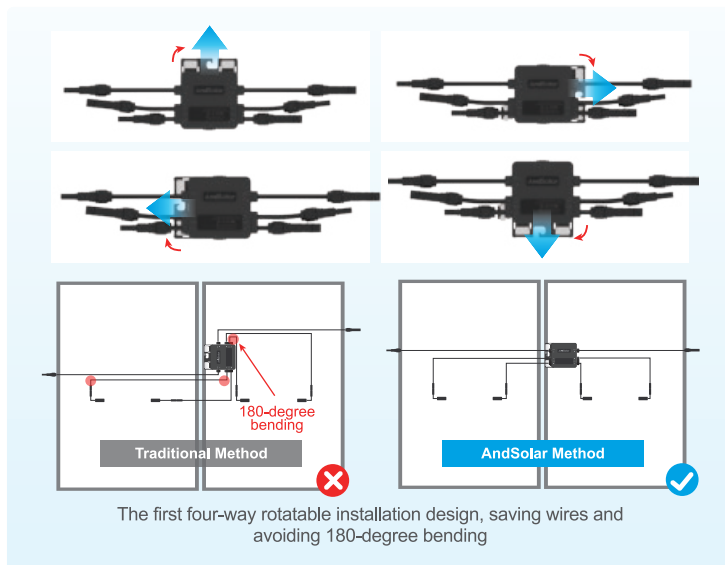


Precise module-level management powered by AI, ensure the profit of your power plant

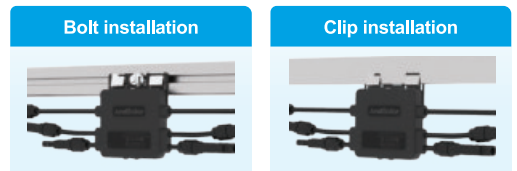
# Quick Installation

Innovative design, and installation can be completed within **30S**

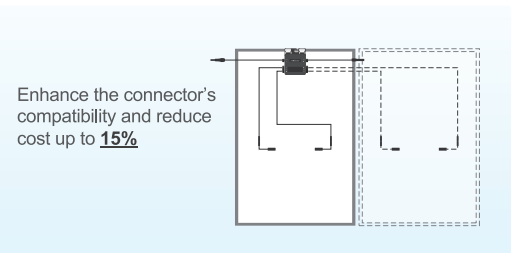
## Rotatable installation design



## Installation methods

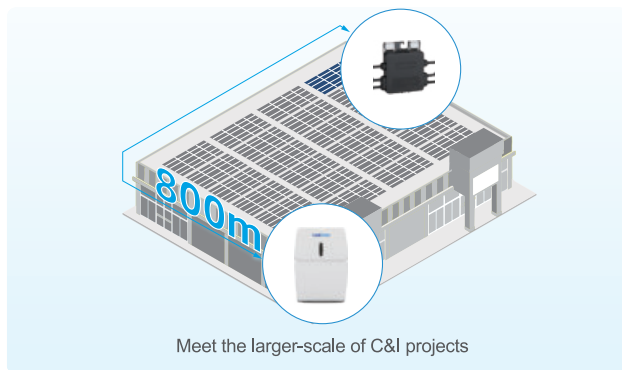


## Supported pre-installation with PV modules

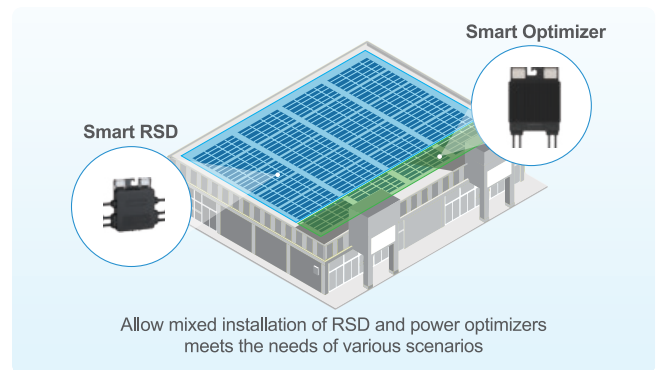


# Flexible Design

## Communication distance: 800 meters



## Hybrid installation



# Product Features

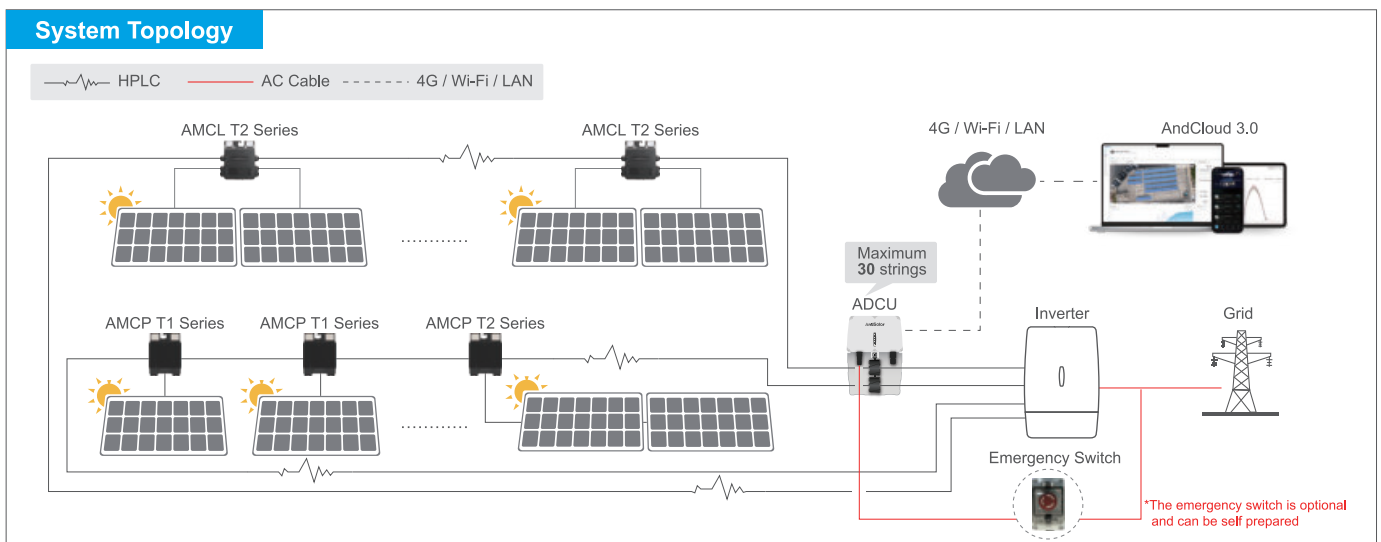
Features		AndSolar Smart RSD	Other Brands RSD
<b>Specifications</b>	Max. Communication Distance	800m	300m
<b>Basic Features</b>	Module-level Rapid Shutdown	✓	✓
	Active Safety Protection	✓	✗
	Fault Warning	✓	✗
	Shutdown Method	On-site Shutdown&Remote Shutdown&Active Shutdown&Single-point shutdown function	On-site Shutdown
	Control Level	Module-level	String-level
<b>Smart Features</b>	1:1 digital twin power station	✓	✗
	Graphic Data Display	✓	✗
	Output Curve and Comparison	✓	✗
	Module-level Physical Positioning	✓	✗
	Early Warning Active Protection	✓	✗
	Digital Work Orders	✓	✗
	Fault Analysis	✓	✗
	Full Life Cycle Asset Management	✓	✗
	Remote Upgrade(OTA)	✓	✗
Support for PV system ecosystem access	✓	✗	

# Product Parameters



Model	AMCL-D2	AMCL-E2	AMCL-F2
<b>Input</b>			
Voltage Range	8-80V Single-channel, 8-120V Dual-channel		
Maximum Input Current	15A	20A	25A
Maximum Short-Circuit Current	30A		
<b>Output</b>			
Voltage Range	8-120V		
Maximum System Voltage	1500V		
Maximum Output Current	15A	20A	25A
Maximum Voltage in Disconnect State	1V		
<b>Structure Parameters</b>			
Dimensions (W*D*H)	103*23*105mm		
Input/Output Connectors	MC4/Compatible with MC4/Customizable		
Input Cable Length	PV1: 0.3m(+), 0.6m(-)/0.7m(+), 1.5m(-)/Customizable		
	PV2: 0.3m(-), 0.6m(+)/0.7m(-), 1.5m(+)/Customizable		
Output Cable Length	0.3m(+), 2.7m(-)/Customizable		
Ingress Protection Rating	IP68/Type 6P		
Flame Retardant Grade	UL94 5VA		
<b>Environment Parameters</b>			
Temperature Range	-40°C+85°C		
Relative Humidity Range	0-100%		
<b>Other</b>			
Communication Method	HPLC		
User Interface	WEB+APP		
<b>Certification</b>			
Safety	NEC 2017/2020/2023(690.12), UL1741, CSA C22.2 No.330, UL3741, IEC/EN 62109-1		
EMC	FCC Part15, IEC/EN 61000-6-1/-2/-3/-4		
Environmental protection	RoSH, REACH		

## System Topology



*And Solar. And All*



**AndSolar Technology Co., Ltd.**

📍 8F, Block B, Building 1, 286 Qinglonggang Road,  
Suzhou City, Jiangsu Province, P. R. China

☎ +86-512-8718 7882

🌐 [www.andsolartech.com](http://www.andsolartech.com)

✉ [sales@andsolartech.com](mailto:sales@andsolartech.com)



Facebook



LinkedIn



YouTube



Instagram

Version: 3.1-36E18

All appearance, color, and other related details of AndSolar products are subject to the official legal documents separately signed by both parties. The images are for reference only and do not constitute, nor should they be interpreted as, any form of legally binding commitment.