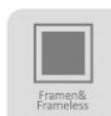


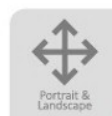
# SUPERSOLAR ALU CARPORT



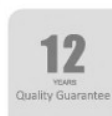
Grounding System



Frameless

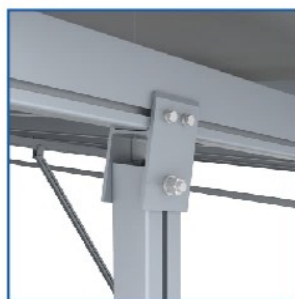
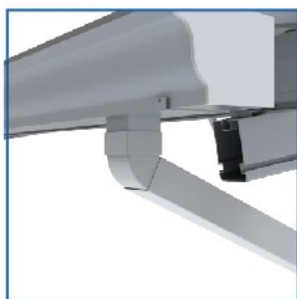


Portrait & Landscape



12  
years  
Quality Guarantee

- Efficient use of space
- Protection for cars
- Convenient EV charging
- Water-proof system
- Partly pre-assembled
- No need for lifting equipment

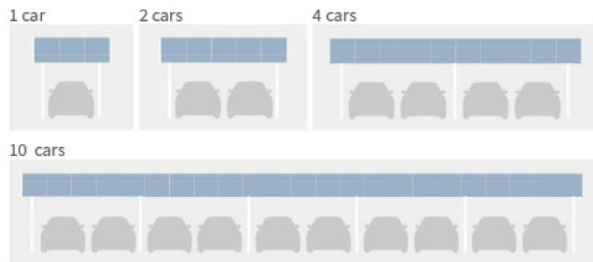




# Customize Your Solar Carport

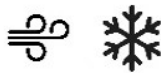
## >>Carport size & capacity

- Single, double, or multiple vehicle spaces
- Custom dimensions based on site requirements



## >>Snow load & wind resistance

- Customized to meet local weather conditions and design standards
- Wind load: 60m/s
- Snow load: 0.5kN/m<sup>2</sup>~1.4kN/m<sup>2</sup>



## >>Accessories

- Integrated EV charging station
- Gutter and drainage system



## >>Projects



\* Larger scale design also available

## >>Details needed for design

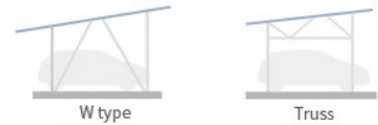
1. Parking slots required, or solar panel quantity required
2. Snow and wind load, or the location of the project site
3. Other requirements for the project



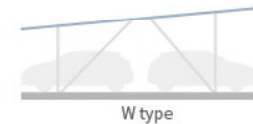
## >>Mounting structure/material

- Aluminum alloy (lightweight & corrosion-resistant)
- Tilt Angle: 5-15deg

- Single row



- Double row



## >>Color and finish

- Color options for frame
- Silver, black



## >>Foundation Type

- Concrete foundation
- Ground screw foundation (for quick installation)





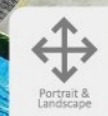
# SUPERSOLAR STEEL CARPORT



Grounding System



Frameless



Portrait & Landscape



Quality Guarantee

## Thorough design with super performance

Supersolar steel carport is designed by an experienced team of in-house architects and engineers to reduce energy costs, enhance the value of your real estate and strengthen your commitment to sustainability.

## Optimizing financial returns

Supersolar steel carport uses industry-leading design techniques to increase production yield, lower material and installation costs and maximize your return on investment.

## Commercial benefits

Especially in commercial zones, where real estate is costly, it makes sense for businesses to cover their parking spaces with solar carports. Not only do they provide shade and shelter for their vehicles, but they generate electricity for their business, resulting in significant savings.



[www.chinasupersolar.com](http://www.chinasupersolar.com)  
[director@chinasupersolar.com](mailto:director@chinasupersolar.com)





## Supersolar Steel Carport System

We define a solar carport as a larger structure covering a commercial parking lot, service stations, public electric vehicle stations, and other large-scale operations.

Everything from size to style can be designed by the business owner and can result in a project that pays off quickly and starts bringing immediate cash flow.

### T-shaped tilt

This one is easier to install, but the height difference from front to back will be considerable. Regarding to the tilt direction, it's possible to be fully south-facing, which can help get better sun exposure.



### Y-shaped tilt

This one can be a little more complicated when installing the water management systems. But as it's a symmetrical structure, it's said to be more of mechanics balance. And it's also a good choice when the site is an east-west one.



### >> More options

- Battery storage



- Lighting system



### >> Projects



\* smaller scale design also available



### >> Details needed for design

1. Parking slots required, or solar panel quantity required
2. Snow and wind load, or the location of the project site
3. Other requirements for the project