

CUSTOMIZABLE TILE ROOF SOLAR MOUNTING SYSTEM

Engineered for Residential & Commercial Tile Roof Projects



1 Roof Hook System

Adjustable/fixed Tile Roof Hook

Customizable Options:

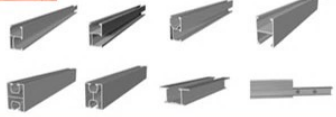
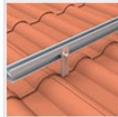
- SUS304 / SUS430 stainless steel hook
- Adjustable height for different tile thickness
- Various hook shapes for different tile profiles

- ✔ No tile damage
- ✔ Strong structural support
- ✔ Compatible with clay / ceramic / glazed tiles

2 Aluminum Rail System

High Strength Rail Structure

- AL6005-T5 aluminum rail
- Custom rail length
- Pre-assembled rail splice



3 Universal Clamp System

Solar Module Fixing

- Mid Clamp / End Clamp
- Module thickness 30-40mm
- Black / Silver anodized finish



4 Tile Gap Waterproof Design

Non-Penetrating Roof Protection

- Installed through tile gaps
- No drilling on tile surface
- Maintains natural roof drainage path



- ✔ No tile damage
- ✔ Reduced leakage risk

5 Engineered Structural Design

Project-Specific Customization

- Roof layout design
- Wind load calculation
- Snow load calculation
- Structural optimization



Standards

- ✔ Eurocode
- ✔ ASCE
- ✔ Local building codes

Material: AL6005-T5 / SUS304

Wind Speed: up to 60m/s

Snow Load: up to 1.4KN/m²

Installation Angle: Roof parallel

Design Life: 25 Years

(Customizable Based on Local Standard)

www.supersolarpv.com

WHY EPC & INSTALLERS CHOOSE US

- Modular Design** Reduce labor costs and installation errors.
- Customized R&D** OEM/ODM support for local roof specifications.
- Global Certs** Structural calculations provided for rapid project approval.
- Supply Chain** Flexible MOQ and short lead times for project agility.

6 Integrated Grounding

Optimized for C&I Projects

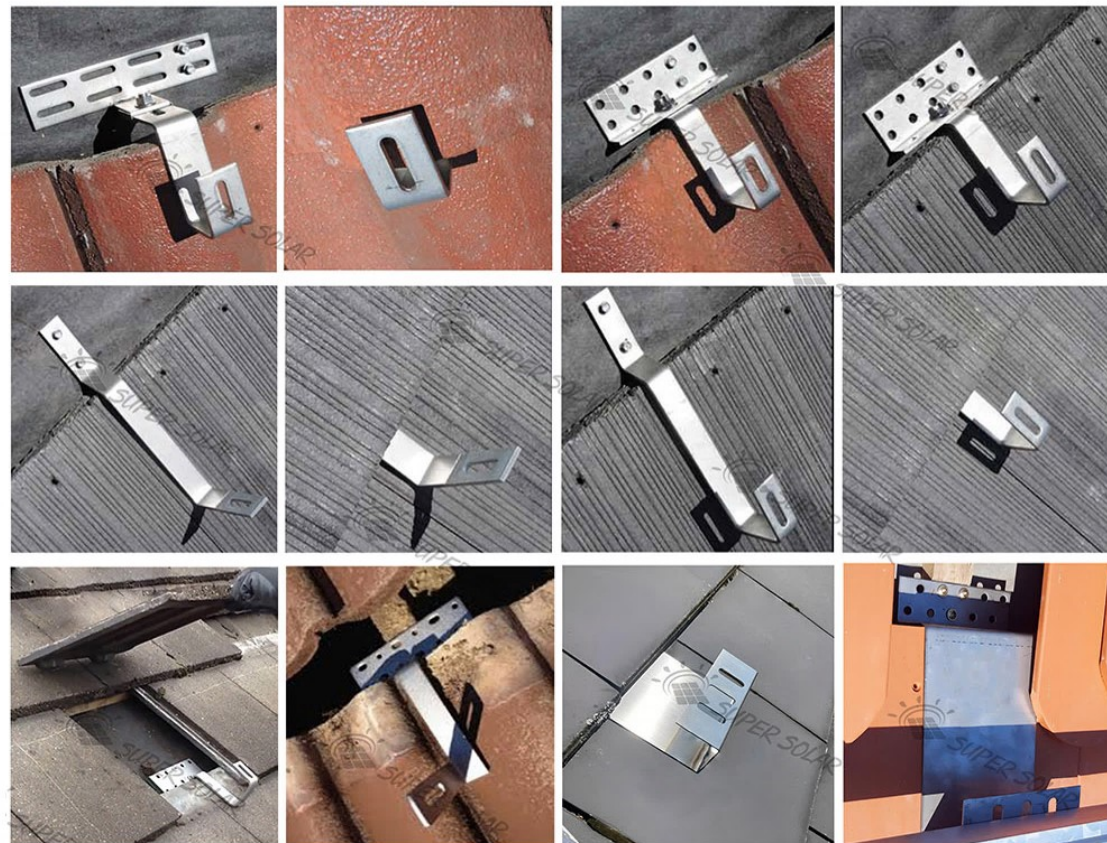
- Meets international safety standards (TUV).
- Customization: Specialized grounding pins and cable clips for professional O&M.



Solar Mounting System Customization Process



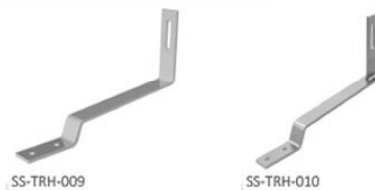
Solutions for a variety of roofs



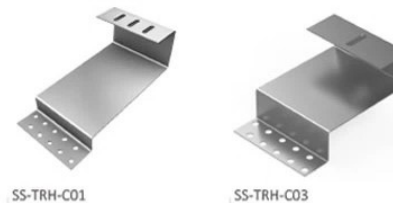
For glazed tile roof



For slate roof



SUS304 plate hook



For asphalt shingle roof



AL6005-T5 hook

