



2025 KETER

PRODUCT CATALOG

Passenger & Light Truck



KETER
Your Care, Our Care

QINGDAO NEW KETER TYRE CO., LTD

ADD: A-25FL Darron Center, No.180 Haier Road, Qingdao, China, 266100

Tel: 86-532-55579147 Fax: 86-532-55579145

E-mail: info@keter tyre.com Web: www.greentractyre.com






@Greentrac Tyre



KETER Tires, established in 2009, is a global supplier with partners in over 170 countries. In 2012, KETER introduced its namesake brand, focusing on PCR and TBR products, embodying a "classic" philosophy. Since 2012, it has undergone multiple upgrades. In 2024, the new KETER PCR line makes its return with unique patterns. The line includes HP/UHP/HT/AT/VAN tires in over 170 sizes.

Brand Position of KETER **Tier-3 leading Brand.**

 <p>Unique Pattern</p> <p>KETER PCR tyres have unique designs, exclusively owned by Keter Company</p>	 <p>Comfortable Driving</p> <p>Comfortable Driving offers you a superior driving experience at the same price</p>	 <p>Innovative Technology</p> <p>Innovative Technology delivers core tire value through innovation</p>
---	---	--



- 1 Four main grooves and V-shaped channels for fast water drainage to ensure safety on rainy season.
- 2 Bidirectional tread blocks with dual 'S' reinforced ribs design can ensure good steering and handling performance.
- 3 Reinforced shoulders can support fast turning to provide excellent handling performance.



DuraForce™

High Terrain

Rim	Size	Load Index	Speed Rating	Standard Rim	Overall Dia	Section Width	O.T.D
16	215/70R16	100	H	6 1/2J	708 27.9	221 8.7	7.8 9.8
	225/70R16	103	H	6 1/2J	722 28.4	228 9.0	7.8 9.8
	235/60R16	100	H	7J	688 27.1	240 9.4	7.8 9.8
	235/70R16	106	H	7J	736 29.0	240 9.4	7.8 9.8
	245/70R16	107	H	7J	750 29.5	248 9.8	7.8 9.8
	255/70R16	111	H	7 1/2J	764 30.1	260 10.2	7.8 9.8
	265/70R16	112	H	8J	778 30.6	272 10.7	7.8 9.8
17	275/70R16	114	H	8J	792 31.2	279 11.0	7.8 9.8
	215/60R17	96	H	6 1/2J	690 27.2	221 8.7	7.8 9.8
	225/60R17	103	H	6 1/2J	702 27.6	228 9.0	7.8 9.8
	225/65R17	102	H	1/2J 6	724 28.5	228 9.0	7.8 9.8
	235/65R17	104	H	7J	738 29.1	240 9.4	7.8 9.8
	245/65R17	107	H	7J	750 29.5	248 9.8	7.8 9.8
	265/65R17	112	H	8J	776 30.6	272 10.7	7.8 9.8
18	265/70R17	115	H	8J	804 31.7	272 10.7	7.8 9.8
	285/65R17	116	H	8 1/2J	802 31.6	292 11.5	7.8 9.8
	225/60R18	100	H	6 1/2J	727 28.6	228 9.0	7.8 9.8
	235/60R18	103	H	7J	739 29.1	240 9.4	7.8 9.8
	235/65R18	106	H	7J	763 30.0	240 9.4	7.8 9.8
	245/60R18	105	H	7J	751 29.6	248 9.8	7.8 9.8
	265/60R18	110	H	8J	775 30.5	272 10.7	7.8 9.8
20	265/70R18	116	H	8J	829 32.6	272 10.7	7.8 9.8
	275/65R18	116	H	8J	815 32.1	279 11.0	7.8 9.8
	285/60R18	116	H	8 1/2J	799 31.5	292 11.5	7.8 9.8
	275/60R20	115	H	8J	838 33.0	279 11.0	7.8 9.8
	285/50R20	116	H	9J	794 31.3	297 11.7	7.8 9.8

SupraForce™

HIGH PERFORMANCE TYRE

- 13 inch
- 14 inch
- 15 inch
- 16 inch

UTQG:400AA



1 ENHANCED LOAD AND DURABILITY

Central 'diamond' tread blocks and semi-closed design of the shoulder can supply super loading ability and improve wear resistance.



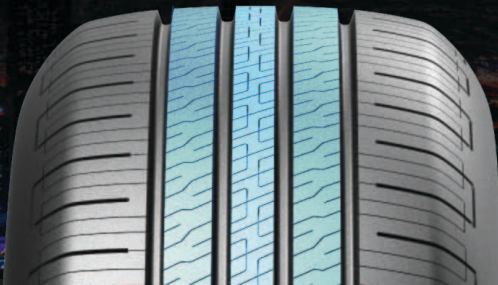
2 QUIET AND SECURE TRACTION

The Longitudinal and lateral grooves can reduce noise while improving wet grip.



3 INNOVATIVE WEAR PREVENTION

Patented contour design for light trucks can prevent irregular wear.



	Size	Load Index	Speed Rating	Standard Rim	Overall Dia	Section Width	O.T.D	
13	155/65R13	73	T	4.50B	532	20.9	157 6.2 6.6 8.3	
	155/70R13	75	T	4.50B	548	21.6	157 6.2 6.6 8.3	
	155/80R13	79	T	4.50B	578	22.8	157 6.2 6.6 8.3	
	165/65R13	77	T	5.00B	544	21.4	170 6.7 6.6 8.3	
	165/70R13	79	T/H	5.00B	562	22.1	170 6.7 6.6 8.3	
	175/60R13	77	H	5.00B	540	21.3	177 7.0 6.6 8.3	
	175/70R13	82	H	5.00B	576	22.7	177 7.0 6.6 8.3	
	175/75R13	84	T	5J	592	23.3	177 7.0 6.6 8.3	
	185/70R13	86	H	5.50B	590	23.2	189 7.4 6.6 8.3	
	14	155/65R14	75	T	4 1/2J	558	22.0	157 6.2 6.6 8.3
165/60R14		75	H	5J	554	21.8	170 6.7 6.6 8.3	
165/65R14		79	H	5J	570	22.4	170 6.7 6.6 8.3	
165/70R14		81	H	5J	588	23.1	170 6.7 6.6 8.3	
175/65R14		86	H	5J	584	23.0	177 7.0 6.8 8.6	
175/70R14		84	H	5J	602	23.7	177 7.0 6.8 8.6	
175/75R14		87	T	5J	618	24.3	177 7.0 6.8 8.6	
185/60R14		82	H	5 1/2J	578	22.8	189 7.4 6.8 8.6	
185/65R14		86	H	5 1/2J	596	23.5	189 7.4 6.8 8.6	
185/70R14		88	H	5 1/2J	616	24.3	189 7.4 6.8 8.6	
195/70R14		91	H	6J	630	24.8	201 7.9 7.0 8.8	
205/60R14		88	H	6J	602	23.7	209 8.2 7.0 8.8	
205/70R14		95	V	6J	644	25.4	209 8.2 7.0 8.8	
15		165/55R15	75	T	5J	563	22.2	170 6.7 6.6 8.3
		165/60R15	77	T	5J	579	22.8	170 6.7 6.6 8.3
	175/50R15	75	T	5 1/2J	557	21.9	182 7.2 6.8 8.6	
	175/55R15	77	T	5 1/2J	573	22.6	182 7.2 6.8 8.6	
	175/60R15	81	H	5J	591	23.3	177 7.0 6.8 8.6	
	175/65R15	84	H	5J	609	24.0	177 7.0 6.8 8.6	
	185/55R15	82	V	6J	585	23.0	194 7.6 6.8 8.6	
	185/60R15	84	H	5 1/2J	603	23.7	189 7.4 7.0 8.8	
	185/65R15	88	H	5 1/2J	621	24.4	189 7.4 7.0 8.8	
	195/50R15	82	V	6J	577	22.7	201 7.9 7.0 8.8	
	195/55R15	85	V	6J	595	23.4	201 7.9 7.0 8.8	
	195/60R15	88	H	6J	615	24.2	201 7.9 7.0 8.8	
	195/65R15	91	V	6J	635	25.0	201 7.9 7.0 8.8	
	205/55R15	88	V	6 1/2J	607	23.9	214 8.4 7.0 8.8	
	205/60R15	91	V	6J	627	24.7	209 8.2 7.0 8.8	
205/65R15	94	V	6J	647	25.5	209 8.2 7.0 8.8		
205/70R15	96	H	6J	669	26.3	209 8.2 7.0 8.8		
215/70R15	98	H	6 1/2J	683	26.9	221 8.7 7.0 8.8		
16	185/55R16	87	V	6J	610	24.0	194 7.6 7.0 8.8	
	195/45R16	80	V	6 1/2J	582	22.9	195 7.7 7.0 8.8	
	195/50R16	88	V	6J	602	23.7	201 7.9 7.0 8.8	
	195/55R16	91	V	6J	620	24.4	201 7.9 7.0 8.8	
	195/60R16	89	H	6J	640	25.2	201 7.9 7.0 8.8	
	205/50ZR16	87	W	6 1/2J	612	24.1	214 8.4 7.0 8.8	
	205/55ZR16	91	W	6 1/2J	632	24.9	214 8.4 7.0 8.8	
	205/60R16	92	V	6J	652	25.7	209 8.2 7.0 8.8	
	205/65R16	95	V	6J	672	26.5	209 8.2 7.0 8.8	
	215/45R16	90	V	7J	600	23.6	213 8.4 7.0 8.8	
	215/55R16	97	W	7J	642	25.3	226 8.9 7.0 8.8	
	215/60R16	95	V	6 1/2J	664	26.1	221 8.7 7.0 8.8	
	215/65R16	102	H	6 1/2J	686	27.0	221 8.7 7.0 8.8	
	225/55R16	99	V	7J	654	25.7	233 9.2 7.0 8.8	
	225/60R16	102	V	6 1/2J	676	26.6	228 9.0 7.0 8.8	

EliteForce™

ULTRA HIGH PERFORMANCE TYRE

- 16 inch
- 17 inch
- 18 inch
- 19 inch
- 20 inch

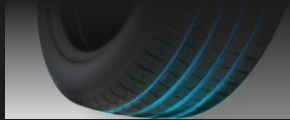


UTQG:420AA



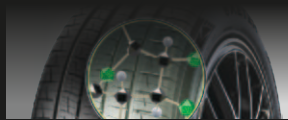
1 STABILITY AND SAFETY

Asymmetric pattern, firm grip, stable turns, safeguard security.



2 EFFICIENT WATER DRAINAGE

Wide straight and transverse grooves, rapid water drainage, fearless in rain.



3 FUEL EFFICIENCY AND CONTROL

Solution-polymerized with silicon formula, fuel-efficient and well-controlled.



	Size	Load Index	Speed Rating	Standard Rim	Overall Dia	Section Width	O.T.D
16	205/45R16	87	W	7J	590	23.2	206 8.1 7.2 9.1
17	205/45R17	88	W	7J	616	24.3	206 8.1 7.2 9.1
	205/50R17	93	W	6 1/2J	638	25.1	214 8.4 7.2 9.1
	205/55R17	95	W	6 1/2J	658	25.9	214 8.4 7.2 9.1
	215/40ZR17	87	W	7 1/2J	604	23.8	218 8.6 7.2 9.1
	215/45R17	91	W	7J	626	24.6	213 8.4 7.2 9.1
	215/50R17	95	W	7J	648	25.5	226 8.9 7.2 9.1
	215/55R17	98	W	7J	668	26.3	226 8.9 7.2 9.1
	225/45R17	94	W	7 1/2J	634	25.0	225 8.9 7.2 9.1
	225/50R17	98	W	7J	658	25.9	233 9.2 7.2 9.1
	225/55R17	101	W	7J	680	26.8	233 9.2 7.2 9.1
	235/45ZR17	97	W	8J	644	25.4	236 9.3 7.2 9.1
	235/55R17	103	W	7 1/2J	690	27.2	245 9.6 7.2 9.1
18	215/50R18	96	W	7J	673	26.5	226 8.9 7.2 9.1
	215/55R18	99	W	7J	693	27.3	226 8.9 7.2 9.1
	225/40R18	92	W	8J	637	25.1	230 9.1 7.2 9.1
	225/45R18	95	W	7 1/2J	659	25.9	225 8.9 7.2 9.1
	225/50R18	99	W	7J	683	26.9	233 9.2 7.2 9.1
	225/55R18	102	W	7J	705	27.8	233 9.2 7.2 9.1
	235/45R18	98	W	8J	669	26.3	236 9.3 7.2 9.1
	235/50R18	101	W	7 1/2J	693	27.3	245 9.6 7.2 9.1
	235/55R18	104	W	7 1/2J	715	28.1	245 9.6 7.2 9.1
	245/40R18	97	W	8 1/2J	653	25.7	248 9.8 7.2 9.1
	245/45R18	100	W	8J	677	26.7	243 9.6 7.2 9.1
19	225/40R19	93	W	8J	663	26.1	230 9.1 7.2 9.1
	225/45R19	96	W	7 1/2J	685	27.0	225 8.9 7.2 9.1
	225/55R19	103	W	7J	731	28.8	233 9.2 7.2 9.1
	235/35R19	91	W	8 1/2J	647	25.5	241 9.5 7.2 9.1
	235/40R19	96	W	8 1/2J	671	26.4	241 9.5 7.2 9.1
	235/50R19	103	W	7 1/2J	719	28.3	245 9.6 7.2 9.1
	235/55R19	105	W	7 1/2J	741	29.2	245 9.6 7.2 9.1
	245/35R19	93	W	8 1/2J	655	25.8	248 9.8 7.2 9.1
	245/40R19	98	W	8 1/2J	679	26.7	248 9.8 7.2 9.1
	245/45R19	102	W	8J	703	27.7	243 9.6 7.2 9.1
	255/35R19	96	W	9J	661	26.0	260 10.2 7.2 9.1
	255/40R19	100	W	9J	687	27.0	260 10.2 7.2 9.1
	255/50R19	107	W	8J	739	29.1	265 10.4 7.2 9.1
	255/55R19	111	W	8J	763	30.0	265 10.4 7.2 9.1
	275/35R19	100	W	9 1/2J	675	26.6	278 10.9 7.2 9.1
	275/40R19	105	W	9 1/2J	703	27.7	278 10.9 7.2 9.1
20	245/35R20	95	W	8 1/2J	680	26.8	248 9.8 7.2 9.1
	245/45R20	103	W	8J	728	28.7	243 9.6 7.2 9.1
	275/40R20	106	W	9 1/2J	728	28.7	278 10.9 7.2 9.1
	275/45R20	106	W	9J	756	29.8	273 10.7 7.2 9.1



- 1 Specially designed for versatile SUVs, featuring an aggressive look and dynamic tread pattern.
- 2 Irregular patterns with 3D sipes can reduce noise and improve the grip performance a lot.
- 3 4 Wide and lateral grooves enhance snow and water evacuation for all-season performance.

15 inch 16 inch 17 inch 18 inch 20 inch



HyperTrax™

All Terrain

Rim	Size	PR	Load Index	Speed Rating
15	LT215/75R15	-	106/103	S
	LT235/75R15	-	110/107	S
16	LT215/70R16	-	108/106	T
	LT235/70R16	-	110/107	S
16	245/70R16	-	107	S
	LT245/75R16	-	123/120	S
	LT265/70R16	-	121/118	S
	LT265/75R16	-	123/120	S
	LT285/75R16	-	122/119	S
	LT245/70R17	-	119/116	S

Rim	Size	PR	Load Index	Speed Rating
17	265/65R17	-	112	S
	LT265/70R17	-	121/118	S
18	265/60R18	-	110	S
	LT265/50R20	-	-	S
20	275/55R20	-	113	S
	LT275/60R20	-	123/120	S
15	10.50R15LT*31	6PR	109	S
	235/85R16LT	12PR	123/120	S



- 1 Central 'diamond' tread blocks and semi-closed design of the shoulder can supply super loading ability and improve wear resistance.
- 2 The Longitudinal and lateral grooves can reduce noise while improving wet grip.
- 3 Patented contour design for light trucks can prevent irregular wear.

14 inch 15 inch 16 inch



CrossForce™

VAN

Rim	Size	PR	Load Index	Speed Rating	Standard Rim	Overall Dia	Section Width	O.T.D	
14	185R14C	8PR	102/100	R	5 1/2J	650 25.6	188 7.4	8 10.1	
	195R14C	8PR	106/104	S	5 1/2J	666 26.2	198 7.8	8 10.1	
15	195/70R15C	8PR	104/102	S	6J	655 25.8	201 7.9	8 10.1	
	195R15C	8PR	106/104	S	5 1/2J	690 27.2	198 7.8	8 10.1	
15	205/70R15C	6PR	104/102	S	6J	669 26.3	209 8.2	8 10.1	
	215/70R15C	8PR	109/107	S	6 1/2J	683 26.9	221 8.7	8 10.1	
	225/70R15C	8PR	112/110	S	6 1/2J	697 27.4	228 9.0	8 10.1	
	255/70R15C	6PR	112/110	S	7 1/2J	739 29.1	260 10.2	8 10.1	
	16	195/65R16C	8PR	104/102	S	6J	660 26.0	201 7.9	8 10.1
		195/75R16C	8PR	107/105	S	5 1/2J	698 27.5	196 7.7	8 10.1
16	205/65R16C	8PR	107/105	S	6J	672 26.5	209 8.2	8 10.1	
	205/75R16C	10PR	113/111	S	5 1/2J	714 28.1	203 8.0	8 10.1	
	205R16C	8PR	110/108	S	6J	736 29.0	208 8.2	8 10.1	
	215/60R16C	8PR	108/106	S	6 1/2J	664 26.1	221 8.7	8 10.1	
	215/65R16C	8PR	109/107	S	6 1/2J	686 27.0	221 8.7	8 10.1	
	215/70R16C	6PR	108/106	S	6 1/2J	708 27.9	221 8.7	8 10.1	
	215/75R16C	10PR	116/114	S	6J	728 28.7	216 8.5	8 10.1	
	225/65R16C	10PR	112/110	S	6 1/2J	698 27.5	228 9.0	8 10.1	
	235/65R16C	10PR	121/119	T	7J	712 28.0	240 9.4	8 10.1	