



2025 PRODUCT CATALOG

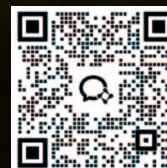
Passenger & Light Truck



www.ketertyre.com



KETER
Your Care, Our Care



Scan this QR code
with WeChat to reach us

QINGDAO NEW KETER TYRE CO., LTD

ADD: A-25FL, Darron Center, No.180 Haier Road, Qingdao, China, 266100

Tel: 86-532-55579147 Fax: 86-532-55579145

E-mail: info@ketertyre.com Web: www.keterglobal.com




@Keter Tyre




KETER Tires, established in 2009, is a global supplier with partners in over 170 countries. In 2012, KETER introduced its namesake brand, focusing on PCR and TBR products, embodying a 'classic' philosophy. Since 2012, it has undergone multiple upgrades. In 2024, the new KETER PCR line makes its return with unique patterns. The line includes HP/UHP/HT/AT/VAN tires in over 170 sizes.

Brand Position of KETER **Tier-3 leading Brand.**




Unique Pattern

KETER PCR tyres have unique designs, exclusively owned by Keter Company



Comfortable Driving

Comfortable Driving offers you a superior driving experience at the same price



Innovative Technology

Innovative Technology delivers core tire value through innovation



- 1 Four main grooves and V-shaped channels for fast water drainage to ensure safety on rainy season.
- 2 Bidirectional tread blocks with dual 'S' reinforced ribs design can ensure good steering and handling performance.
- 3 Reinforced shoulders can support fast turning to provide excellent handling performance.



DuraForce™

High Terrain

Rim	Size	Load Index	Speed Rating	Standard Rim	Overall Dia [mm/in]	Section Width [mm/in]	O.T.D [mm/32nds]
16	215/70R16	100	H	6 1/2J	708 27.9	221 8.7	7.8 9.8
	225/70R16	103	H	6 1/2J	722 28.4	228 9.0	7.8 9.8
	235/60R16	100	H	7J	688 27.1	240 9.4	7.8 9.8
	235/70R16	106	H	7J	736 29.0	240 9.4	7.8 9.8
	245/70R16	107	H	7J	750 29.5	248 9.8	7.8 9.8
	255/70R16	111	H	7 1/2J	764 30.1	260 10.2	7.8 9.8
	265/70R16	112	H	8J	778 30.6	272 10.7	7.8 9.8
	275/70R16	114	H	8J	792 31.2	279 11.0	7.8 9.8
17	215/60R17	96	H	6 1/2J	690 27.2	221 8.7	7.8 9.8
	225/60R17	103	H	6 1/2J	702 27.6	228 9.0	7.8 9.8
	225/65R17	102	H	6 1/2J	724 28.5	228 9.0	7.8 9.8
	235/65R17	104	H	7J	738 29.1	240 9.4	7.8 9.8
	245/65R17	107	H	7J	750 29.5	248 9.8	7.8 9.8
	265/65R17	112	H	8J	776 30.6	272 10.7	7.8 9.8
	265/70R17	115	H	8J	804 31.7	272 10.7	7.8 9.8
	285/65R17	116	H	8 1/2J	802 31.6	292 11.5	7.8 9.8
18	225/60R18	100	H	6 1/2J	727 28.6	228 9.0	7.8 9.8
	235/60R18	103	H	7J	739 29.1	240 9.4	7.8 9.8
	235/65R18	106	H	7J	763 30.0	240 9.4	7.8 9.8
	245/60R18	105	H	7J	751 29.6	248 9.8	7.8 9.8
	265/60R18	110	H	8J	775 30.5	272 10.7	7.8 9.8
	265/70R18	116	H	8J	829 32.6	272 10.7	7.8 9.8
	275/65R18	116	H	8J	815 32.1	279 11.0	7.8 9.8
	285/60R18	116	H	8 1/2J	799 31.5	292 11.5	7.8 9.8
20	275/60R20	115	H	8J	838 33.0	279 11.0	7.8 9.8
	285/50R20	116	H	9J	794 31.3	297 11.7	7.8 9.8

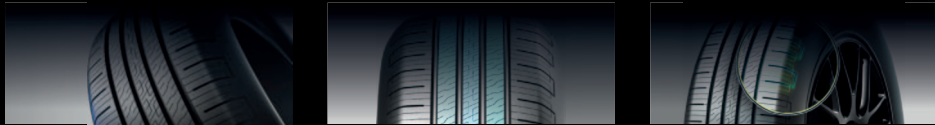


SupraForce™

HIGH PERFORMANCE TYRE

- 13 inch
- 14 inch
- 15 inch
- 16 inch

UTQG:400AA

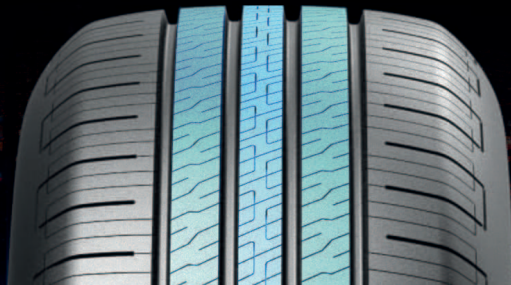


- 1 | SUPERIOR CONTROL**
- 2 | REDUCED NOISE**
- 3 | ENHANCED SAFETY**

Patented "circuit board" pattern for ultimate control and comfort.

"U" groove shoulder design reduces noise for a quieter ride.

Wider central rib for stability and quick braking, ensuring family safety.



SIZES & SPECIFICATION

Rim	Size	Load Index	Speed Rating	Standard Rim	Overall Dia [mm/in]	Section Width [mm/in]	O.T.D [mm/32nds]
13	155/65R13	73	T	4.50B	532 20.9	157 6.2	6.6 8.3
	155/70R13	75	T	4.50B	548 21.6	157 6.2	6.6 8.3
	155/80R13	79	T	4.50B	578 22.8	157 6.2	6.6 8.3
	165/65R13	77	T	5.00B	544 21.4	170 6.7	6.6 8.3
	165/70R13	79	T	5.00B	562 22.1	170 6.7	6.6 8.3
	175/60R13	77	H	5.00B	540 21.3	177 7.0	6.6 8.3
	175/70R13	82	H	5.00B	576 22.7	177 7.0	6.6 8.3
	175/75R13	84	T	5J	592 23.3	177 7.0	6.6 8.3
	185/70R13	86	H	5.50B	590 23.2	189 7.4	6.6 8.3
	155/65R14	75	T	4 1/2J	558 22.0	157 6.2	6.6 8.3
14	165/60R14	75	H	5J	554 21.8	170 6.7	6.6 8.3
	165/65R14	79	H	5J	570 22.4	170 6.7	6.6 8.3
	165/70R14	81	H	5J	588 23.1	170 6.7	6.6 8.3
	175/65R14	86	H	5J	584 23.0	177 7.0	6.8 8.6
	175/70R14	84	H	5J	602 23.7	177 7.0	6.8 8.6
	175/75R14	87	T	5J	618 24.3	177 7.0	6.8 8.6
	185/60R14	82	H	5 1/2J	578 22.8	189 7.4	6.8 8.6
	185/65R14	86	H	5 1/2J	596 23.5	189 7.4	6.8 8.6
	185/70R14	88	H	5 1/2J	616 24.3	189 7.4	6.8 8.6
	195/70R14	91	H	6J	630 24.8	201 7.9	7.0 8.8
15	205/60R14	88	H	6J	602 23.7	209 8.2	7.0 8.8
	205/70R14	95	V	6J	644 25.4	209 8.2	7.0 8.8
	165/55R15	75	T	5J	563 22.2	170 6.7	6.6 8.3
	165/60R15	77	T	5J	579 22.8	170 6.7	6.6 8.3
	175/50R15	75	T	5 1/2J	557 21.9	182 7.2	6.8 8.6
	175/55R15	77	T	5 1/2J	573 22.6	182 7.2	6.8 8.6
	175/60R15	81	H	5J	591 23.3	177 7.0	6.8 8.6
	175/65R15	84	H	5J	609 24.0	177 7.0	6.8 8.6
	185/55R15	82	V	6J	585 23.0	194 7.6	6.8 8.6
	185/60R15	84	H	5 1/2J	603 23.7	189 7.4	7.0 8.8
16	185/65R15	88	H	5 1/2J	621 24.4	189 7.4	7.0 8.8
	195/50R15	82	V	6J	577 22.7	201 7.9	7.0 8.8
	195/55R15	85	V	6J	595 23.4	201 7.9	7.0 8.8
	195/60R15	88	H	6J	615 24.2	201 7.9	7.0 8.8
	195/65R15	91	V	6J	635 25.0	201 7.9	7.0 8.8
	205/55R15	88	V	6 1/2J	607 23.9	214 8.4	7.0 8.8
	205/60R15	91	V	6J	627 24.7	209 8.2	7.0 8.8
	205/65R15	94	V	6J	647 25.5	209 8.2	7.0 8.8
	205/70R15	96	H	6J	669 26.3	209 8.2	7.0 8.8
	215/70R15	98	H	6 1/2J	683 26.9	221 8.7	7.0 8.8
16	185/55R16	87	V	6J	610 24.0	194 7.6	7.0 8.8
	195/45R16	80	V	6 1/2J	582 22.9	195 7.7	7.0 8.8
	195/50R16	88	V	6J	602 23.7	201 7.9	7.0 8.8
	195/55R16	91	V	6J	620 24.4	201 7.9	7.0 8.8
	195/60R16	89	H	6J	640 25.2	201 7.9	7.0 8.8
	205/50ZR16	87	W	6 1/2J	612 24.1	214 8.4	7.0 8.8
	205/55ZR16	91	W	6 1/2J	632 24.9	214 8.4	7.0 8.8
	205/60R16	92	V	6J	652 25.7	209 8.2	7.0 8.8
	205/65R16	95	V	6J	672 26.5	209 8.2	7.0 8.8
	215/45R16	90	V	7J	600 23.6	213 8.4	7.0 8.8
16	215/55ZR16	97	W	7J	642 25.3	226 8.9	7.0 8.8
	215/60R16	95	V	6 1/2J	664 26.1	221 8.7	7.0 8.8
	215/65R16	102	H	6 1/2J	686 27.0	221 8.7	7.0 8.8
	225/55R16	99	V	7J	654 25.7	233 9.2	7.0 8.8
	225/60R16	102	V	6 1/2J	676 26.6	228 9.0	7.0 8.8

EliteForce™

ULTRA HIGH PERFORMANCE TYRE

- 16 inch
- 17 inch
- 18 inch
- 19 inch
- 20 inch

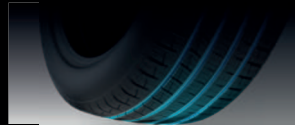


UTQG:420AA



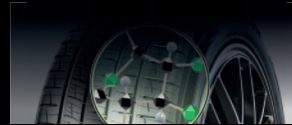
1 | STABILITY AND SAFETY

The asymmetric pattern provides a firm grip, stable turns, and safeguards security.



2 | EFFICIENT WATER DRAINAGE

Wide straight and transverse grooves, rapid water drainage, fearless in rain.



3 | FUEL EFFICIENCY AND CONTROL

Solution-polymerized with silicon formula, fuel-efficient and well-controlled.



SIZES & SPECIFICATION

Rim	Size	Load Index	Speed Rating	Standard Rim	Overall Dia [mm/in]	Section Width [mm/in]	O.T.D [mm/32nds]
16	205/45ZR16	87	W	7J	590 23.2	206 8.1	7.2 9.1
17	205/45ZR17	88	W	7J	616 24.3	206 8.1	7.2 9.1
	205/50ZR17	93	W	6 1/2J	638 25.1	214 8.4	7.2 9.1
	205/55ZR17	95	W	6 1/2J	658 25.9	214 8.4	7.2 9.1
	215/40ZR17	87	W	7 1/2J	604 23.8	218 8.6	7.2 9.1
	215/45ZR17	91	W	7J	626 24.6	213 8.4	7.2 9.1
	215/50ZR17	95	W	7J	648 25.5	226 8.9	7.2 9.1
	215/55ZR17	98	W	7J	668 26.3	226 8.9	7.2 9.1
	225/45ZR17	94	W	7 1/2J	634 25.0	225 8.9	7.2 9.1
	225/50ZR17	98	W	7J	658 25.9	233 9.2	7.2 9.1
	225/55ZR17	101	W	7J	680 26.8	233 9.2	7.2 9.1
	235/45ZR17	97	W	8J	644 25.4	236 9.3	7.2 9.1
	235/55ZR17	103	W	7 1/2J	690 27.2	245 9.6	7.2 9.1
18	215/50ZR18	96	W	7J	673 26.5	226 8.9	7.2 9.1
	215/55ZR18	99	W	7J	693 27.3	226 8.9	7.2 9.1
	225/40ZR18	92	W	8J	637 25.1	230 9.1	7.2 9.1
	225/45ZR18	95	W	7 1/2J	659 25.9	225 8.9	7.2 9.1
	225/50ZR18	99	W	7J	683 26.9	233 9.2	7.2 9.1
	225/55ZR18	102	W	7J	705 27.8	233 9.2	7.2 9.1
	235/45ZR18	98	W	8J	669 26.3	236 9.3	7.2 9.1
	235/50ZR18	101	W	7 1/2J	693 27.3	245 9.6	7.2 9.1
	235/55ZR18	104	W	7 1/2J	715 28.1	245 9.6	7.2 9.1
	245/40ZR18	97	W	8 1/2J	653 25.7	248 9.8	7.2 9.1
	245/45ZR18	100	W	8J	677 26.7	243 9.6	7.2 9.1
19	225/40ZR19	93	W	8J	663 26.1	230 9.1	7.2 9.1
	225/45ZR19	96	W	7 1/2J	685 27.0	225 8.9	7.2 9.1
	225/55ZR19	103	W	7J	731 28.8	233 9.2	7.2 9.1
	235/35ZR19	91	W	8 1/2J	647 25.5	241 9.5	7.2 9.1
	235/40ZR19	96	W	8 1/2J	671 26.4	241 9.5	7.2 9.1
	235/50ZR19	103	W	7 1/2J	719 28.3	245 9.6	7.2 9.1
	235/55ZR19	105	W	7 1/2J	741 29.2	245 9.6	7.2 9.1
	245/35ZR19	93	W	8 1/2J	655 25.8	248 9.8	7.2 9.1
	245/40ZR19	98	W	8 1/2J	679 26.7	248 9.8	7.2 9.1
	245/45ZR19	102	W	8J	703 27.7	243 9.6	7.2 9.1
	255/35ZR19	96	W	9J	661 26.0	260 10.2	7.2 9.1
	255/40ZR19	100	W	9J	687 27.0	260 10.2	7.2 9.1
	255/50ZR19	107	W	8J	739 29.1	265 10.4	7.2 9.1
	255/55ZR19	111	W	8J	763 30.0	265 10.4	7.2 9.1
	275/35ZR19	100	W	9 1/2J	675 26.6	278 10.9	7.2 9.1
	275/40ZR19	105	W	9 1/2J	703 27.7	278 10.9	7.2 9.1
20	245/35ZR20	95	W	8 1/2J	680 26.8	248 9.8	7.2 9.1
	245/45ZR20	103	W	8J	728 28.7	243 9.6	7.2 9.1
	275/40ZR20	106	W	9 1/2J	728 28.7	278 10.9	7.2 9.1
	275/45ZR20	106	W	9J	756 29.8	273 10.7	7.2 9.1



- 1 Featuring an aggressive look and dynamic tread pattern, your car commands attention on the road.
- 2 Tiger-tooth-shaped center tread blocks paired with versatile shoulders, ensuring ultimate grip and fearless performance.
- 3 Uni-directional sidewall design effortlessly channels debris, ready for any challenge.



15 inch 16 inch 17 inch 18 inch 20 inch

HyperTrax™

All Terrain



- 1 Central 'diamond' tread blocks and semi-closed design of the shoulder can supply super loading ability and improve wear resistance.
- 2 The Longitudinal and lateral grooves can reduce noise while improving wet grip.
- 3 Patented contour design for light trucks can prevent irregular wear.



14 inch 15 inch 16 inch

CrossForce™

VAN

Rim	Size	PR	Load Index	Speed Rating	Standard Rim	Overall Dia [mm/in]	Section Width [mm/in]	O.T.D [mm/32nds]
15	LT215/75R15	8PR	106/103	S	6J	703 27.7	216 8.5	10.0 12.6
	LT235/75R15	8PR	110/107	S	6 1/2J	733 28.9	235 9.3	10.0 12.6
	31*10.50R15LT	6PR	109	S	8 1/2J	775 30.5	268 10.6	10.0 12.6
16	LT215/70R16	8PR	108/106	T	6 1/2J	708 27.9	221 8.7	10.0 12.6
	LT235/70R16	8PR	110/107	S	7J	736 29.0	240 9.4	10.0 12.6
	LT235/85R16	12PR	123/120	S	6 1/2J	806 31.7	236 9.3	10.0 12.6
	245/70R16	-	107	S	7J	750 29.5	248 9.8	9.0 11.3
	LT245/75R16	12PR	123/120	S	7J	774 30.5	248 9.8	10.0 12.6
	LT265/70R16	10PR	121/118	S	8J	778 30.6	272 10.7	10.0 12.6
17	LT265/75R16	10PR	123/120	S	7 1/2J	804 31.7	267 10.5	10.0 12.6
	LT285/75R16	8PR	122/119	S	8J	834 32.8	286 11.3	10.0 12.6
	LT245/70R17	10PR	119/116	S	7J	776 30.6	248 9.8	10.0 12.6
	265/65R17	-	112	S	8J	776 30.6	272 10.7	9.0 11.3
	LT265/70R17	10PR	121/118	S	8J	804 31.7	272 10.7	10.0 12.6
	LT285/70R17	10PR	121/118	S	8 1/2J	832 32.8	292 11.5	10.0 12.6
18	265/60R18	-	110	S	8J	775 30.5	272 10.7	9.0 11.3
	20	LT265/50R20	10PR	115/112	S	8 1/2J	774 30.5	277 10.9
20	275/55R20	-	113	S	8 1/2J	810 31.9	284 11.2	9.0 11.3
	LT275/60R20	10PR	123/120	S	8J	838 33.0	279 11.0	10.0 12.6
	285/50R20	-	112	S	9J	794 31.3	297 11.7	9.0 11.3

Rim	Size	PR	Load Index	Speed Rating	Standard Rim	Overall Dia [mm/in]	Section Width [mm/in]	O.T.D [mm/32nds]
14	185R14C	8PR	102/100	R	5 1/2J	650 25.6	188 7.4	8 10.1
	195R14C	8PR	106/104	S	5 1/2J	666 26.2	198 7.8	8 10.1
15	195/70R15C	8PR	104/102	S	6J	655 25.8	201 7.9	8 10.1
	195R15C	8PR	106/104	S	5 1/2J	690 27.2	198 7.8	8 10.1
	215/70R15C	8PR	109/107	S	6 1/2J	683 26.9	221 8.7	8 10.1
	225/70R15C	8PR	112/110	S	6 1/2J	697 27.4	228 9.0	8 10.1
16	255/70R15C	6PR	112/110	S	7 1/2J	739 29.1	260 10.2	8 10.1
	195/75R16C	8PR	107/105	S	5 1/2J	698 27.5	196 7.7	8 10.1
	205/75R16C	10PR	113/111	S	5 1/2J	714 28.1	203 8.0	8 10.1
	205R16C	8PR	110/108	S	6J	736 29.0	208 8.2	8 10.1
	235/65R16C	10PR	121/119	T	7J	712 28.0	240 9.4	8 10.1
	205/70R15C *	6PR	104/102	S	6J	669 26.3	209 8.2	8 10.1
	195/65R16C *	8PR	104/102	S	6J	660 26.0	201 7.9	8 10.1
	205/65R16C *	8PR	107/105	S	6J	672 26.5	209 8.2	8 10.1
	215/60R16C *	8PR	108/106	S	6 1/2J	664 26.1	221 8.7	8 10.1
	215/65R16C *	8PR	109/107	S	6 1/2J	686 27.0	221 8.7	8 10.1
20	215/70R16C *	6PR	108/106	S	6 1/2J	708 27.9	221 8.7	8 10.1
	215/75R16C *	10PR	116/114	S	6J	728 28.7	216 8.5	8 10.1
	225/65R16C *	10PR	112/110	S	6 1/2J	698 27.5	228 9.0	8 10.1

* Coming Soon