



LED & LCD SCREEN

Indoor Fixed LED Display

Guangzhou JunChen Display Technology Co., Ltd.

Address: 303A, No. 6-2, Yagang Middle Road, ShiMen Street, Baiyun District Guangzhou City, Guangdong Province, China.

Contact: Junchen Tel/whatsapp/Mob: +86 18818901997 Webiste: www.jcdisplay.com

Shenzhen ZKT Technology Co., Ltd.
31F, No. 101, Building B, No. 6, Tongwei Community Industrial Avenue,
Fuhai Street, Bao'an District, Shenzhen, China



Certificate of Compliance

Certificate Number: ZKT-25063014978C

Certificate's Holder : Guangzhou JunChen Display Technology Co.,Ltd
209-213, No. 59 Yagang Middle Road, Baiyun District,
Guangzhou City

Manufacturer : Guangzhou JunChen Display Technology Co.,Ltd
209-213, No. 59 Yagang Middle Road, Baiyun District,
Guangzhou City

Trade Mark : N/A

Product : LED COB DISPLAY

Model(s) : p1.25
P0.6, P0.7, P0.8, P1.25, P1.53, P1.56, P1.86, P1.876, P1.95, P2,
P2.5, P2.604, P2.976, P3, P3.076, P3.75, P3.91, P3.91-7.82,
P2.6-5.8, P4, P4.81, P4.75, P5, P5.33, P5.9, P6, P6.87, P8, P10,
P10.4, P12.5, P16.625, P16, P20, P25, P31.25, P50

Test Standard : EN 5502:2015/A1:2020/A1:2020, EN 55035:2017/A1:2020,
EN IEC 61000-5-2:2019/A1:2021/A2:2024,
EN 61000-3-3:2013/A1:2019/A2:2021,
EN 61000-4-2:2009, EN IEC 61000-4-3:2020,
EN 61000-4-6:2015, EN 61000-4-5:2014/A1:2017,
EN IEC 61000-4-6:2023, EN 61000-4-8:2010,
EN IEC 61000-4-11:2020

This Attestation of Compliance is issued on a voluntary basis for electrical equipment below the voltage limits of EMC Directive 2014/53/EU. The essential requirement are fulfilled accordingly based on the technical specifications applicable at the time of issuance. See also notes overleaf. It is only valid in connection with the test report number: ZKT-25063014978C.



This Certificate of Conformity is based on single evaluation of the submitted sample(s) of the above mentioned product. It does not imply an assessment of the whole product and relevant. Directives to be observed.
☎ +86-400 000 9970 ☎ +86-755-22338888 ☎ zkt@zktlab.com ☎ www.zktlab.com

Shenzhen ZKT Technology Co., Ltd.
31F, No. 101, Building B, No. 6, Tongwei Community Industrial Avenue,
Fuhai Street, Bao'an District, Shenzhen, China



Certificate of Compliance

Certificate Number: ZKT-25063014977C

Certificate's Holder : Guangzhou JunChen Display Technology Co.,Ltd
209-213, No. 59 Yagang Middle Road, Baiyun District,
Guangzhou City

Manufacturer : Guangzhou JunChen Display Technology Co.,Ltd
209-213, No. 59 Yagang Middle Road, Baiyun District,
Guangzhou City

Trade Mark : N/A

Product : LED COB DISPLAY

Model(s) : P1.25
P0.6 P0.7 P0.9 P1.25 P1.53 P1.56 P1.86 P1.876 P1.95 P2 P2.5
P2.604 P2.976 P3 P3.076 P3.75 P3.91 P3.91-7.82 P3.9-5.8 P4
P4.81 P4.75 P5 P5.33 P5.9 P6 P6.87 P8 P10 P10.4 P12.5 P15.625
P16 P20 P25 P31.25 P50

Test Standard : EN IEC 62365-1:2024/A1:2024

This Attestation of Compliance is issued on a voluntary basis for electrical equipment below the voltage limits of Low Voltage Directive 2014/35/EU. The essential requirement are fulfilled accordingly based on the technical specifications applicable at the time of issuance. See also notes overleaf. It is only valid in connection with the test report number: ZKT-25063014977C.



This Certificate of Conformity is based on single evaluation of the submitted sample(s) of the above mentioned product. It does not imply an assessment of the whole product and relevant. Directives to be observed.
☎ +86-400 000 9970 ☎ +86-755-22338888 ☎ zkt@zktlab.com ☎ www.zktlab.com

Shenzhen ZKT Technology Co., Ltd.
31F, No. 101, Building B, No. 6, Tongwei Community Industrial Avenue,
Fuhai Street, Bao'an District, Shenzhen, China



SUPPLIER'S DECLARATION OF CONFORMITY

Certificate Number: ZKT-25063014979C

Certificate's Holder : Guangzhou JunChen Display Technology Co.,Ltd
209-213, No. 59 Yagang Middle Road, Baiyun District,
Guangzhou City

Manufacturer : Guangzhou JunChen Display Technology Co.,Ltd
209-213, No. 59 Yagang Middle Road, Baiyun District,
Guangzhou City

Trade Mark : N/A

Product : LED COB DISPLAY

Model(s) : p1.25
P0.6, P0.7, P0.8, P1.25, P1.53, P1.56, P1.86, P1.876, P1.95, P2,
P2.5, P2.604, P2.976, P3, P3.076, P3.75, P3.91, P3.91-7.82,
P2.6-5.8, P4, P4.81, P4.75, P5, P5.33, P5.9, P6, P6.87, P8, P10,
P10.4, P12.5, P16.625, P16, P20, P25, P31.25, P50

Test Standard : FCC Part 15, B
ANSI C63.4:2014

This Attestation of Compliance is issued on a voluntary basis for electrical equipment below the voltage limits of FCC standard. The essential requirements are fulfilled accordingly based on the technical specifications applicable at the time of issuance. See also notes overleaf. It is only valid in connection with the test report number: ZKT-25063014979C.



This Certificate of Conformity is based on single evaluation of the submitted sample(s) of the above mentioned product. It does not imply an assessment of the whole product and relevant. Directives to be observed.
☎ +86-400 000 9970 ☎ +86-755-22338888 ☎ zkt@zktlab.com ☎ www.zktlab.com

Shenzhen ZKT Technology Co., Ltd.
31F, No. 101, Building B, No. 6, Tongwei Community Industrial Avenue,
Fuhai Street, Bao'an District, Shenzhen, China



Certificate of Compliance

Certificate Number: ZKT-25063014980C

Certificate's Holder : Guangzhou JunChen Display Technology Co.,Ltd
209-213, No. 59 Yagang Middle Road, Baiyun District,
Guangzhou City

Manufacturer : Guangzhou JunChen Display Technology Co.,Ltd
209-213, No. 59 Yagang Middle Road, Baiyun District,
Guangzhou City

Trade Mark : N/A

Product : LED COB DISPLAY

Model(s) : p1.25
P0.6 P0.7 P0.9 P1.25 P1.53 P1.56 P1.86 P1.876 P1.95 P2 P2.5
P2.604 P2.976 P3 P3.076 P3.75 P3.91 P3.91-7.82
P2.6-5.8 P4 P4.81 P4.75 P5 P5.33 P5.9 P6 P6.87 P8 P10
P10.4 P12.5 P16.625 P16 P20 P25 P31.25 P50

Test Method : IEC 62321-3:2015, IEC 62321-4:2019/A1:2017, IEC
62321-5:2013, IEC 62321-6:2015, IEC 62321-7:1-2015, IEC
62321-7-2:2017, IEC 62321-8:2017

The following products have been tested by us and found in conformity with the (RoHS) Directive 2011/65/EU Annex II amending Annex (EU)2015/863 and amending Annex (EU)2017/1020. It is possible to use CE Marking to demonstrate the conformity with the Directive. It is only valid in connection with the test report number: ZKT-25063014980C.



This Certificate of Conformity is based on single evaluation of the submitted sample(s) of the above mentioned product. It does not imply an assessment of the whole product and relevant. Directives to be observed.
☎ +86-400 000 9970 ☎ +86-755-22338888 ☎ zkt@zktlab.com ☎ www.zktlab.com

شهادة - Certificate - 證明書 - Сертификат - 證明書 - Certificate - 證明書 - 證明書 - 證明書

شهادة - Certificate - 證明書 - Сертификат - 證明書 - Certificate - 證明書 - 證明書 - 證明書

شهادة - Certificate - 證明書 - Сертификат - 證明書 - Certificate - 證明書 - 證明書 - 證明書

شهادة - Certificate - 證明書 - Сертификат - 證明書 - Certificate - 證明書 - 證明書 - 證明書



Product Description

- Iron cabinet with lock structure for easy assembly and time saving installation
- Modular design for easy installation, disassembly, and simple maintenance.
- New structure design suitable for indoor installation, meeting hoisting and racking requirements.
- Excellent heat dissipation design with no external fan or air conditioner required, ensuring low noise.
- Low power consumption for cost-saving operation.





Product Parameters

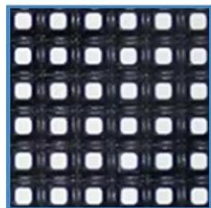
Product	P2.5	P3	P4	P5	P6	P10
Pixel Pitch	2.5mm	3mm	4mm	5mm	6mm	10mm
Module Size	320mm*160mm	192mm*192mm	320*160mm	320mm*160mm	192mm*192mm	320mm*160mm
Scan Mode	32S	32S	20S	16S	1/8scan	1/2scan
Package Mode	SMD2121	SMD2121	SMD2121	SMD2121	SMD3535	SMD3535
Pixel Resolution	128dots(W)*64dots(H)	64dots(W)*64dots(H)	80dots(W)*40dots(H)	64dots(W)*32dots(H)	32dots(W)*32dots(H)	32dots(W)*16dots(H)
Drive Type	Constant drive (IC:MBI5124/ICN2153)					
Color Configuration	SMD 3 in 1 1R1G1B					
Control System	Nova star					
Input Voltage	AC220V/50Hz or AC110V/60Hz					
Average Power Consumption	330W/m ²					
Cabinet Size	960mm*960mm					
Pixel Resolution	384dots(W)*384dot(H)	320dots(W)*320dots(H)	240dots(W)*240dots(H)	192dots(W)*192dots(H)	160dots(W)*160dots(H)	96dots(W)*96dots(H)
Pixel Denisty	160000dots/m ²	111111dots/m ²	62400dots/m ²	40000dots/m ²	27777dots/m ²	10000dots/m ²
Material	Metal (Aluminum optional)					
LED	Kinglight/ Nationstar					
Refresh Rate	1920/3840hz					
Colors	549 Billion					
Brightness	≥1200cd/m ²					
Life Span	≥100,000 hours					
IP Rating(Front/Rear)	IP34					
Min. Viewing Distance	≥2.5m	≥3m	≥4m	≥5m	≥6m	≥10m
View Angle	160°(W) 120°(H)					
Temperature-operating	-30°C~+60°C					
Humidity-operating	10%-95%					
Source Compatibility	AV,DVI,HDMI,SDI,S-Video,DP etc					
Thickness	85mm					

Product Details

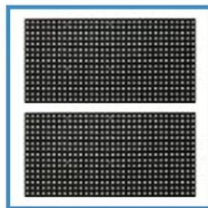
COMBINATION



SMD



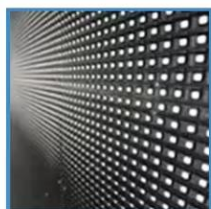
Lamp beads



Module



Led screen



Screen front



Cabinet back



Application



- Name:P2.5 Indoor LED Display
- Size:Customized size
- Application: Fixed installation for television studio
- Function: High definition, High brightness,Full color

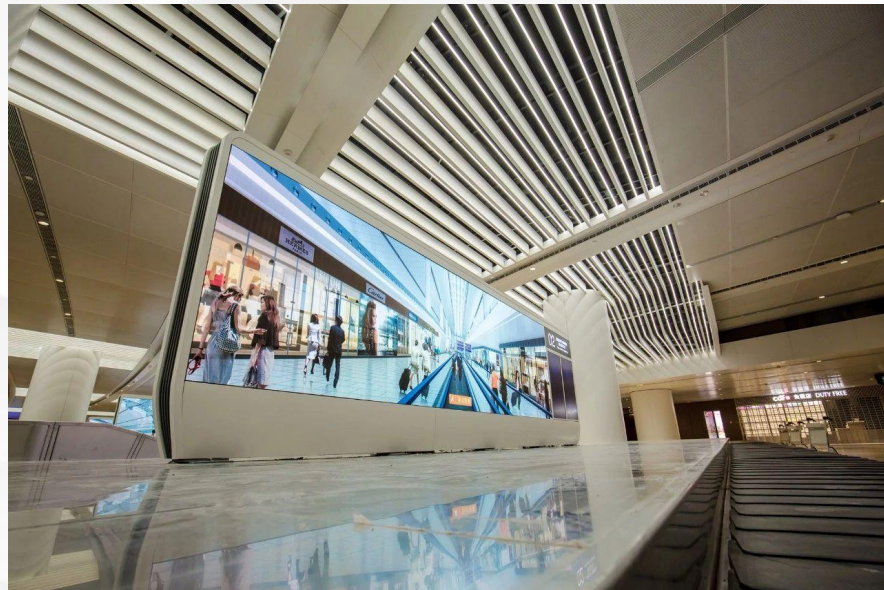


- Name:P2.5 Indoor LED Display
- Size:Customized size
- Application: Fixed installation for school
- Function: High definition, High brightness,Full color

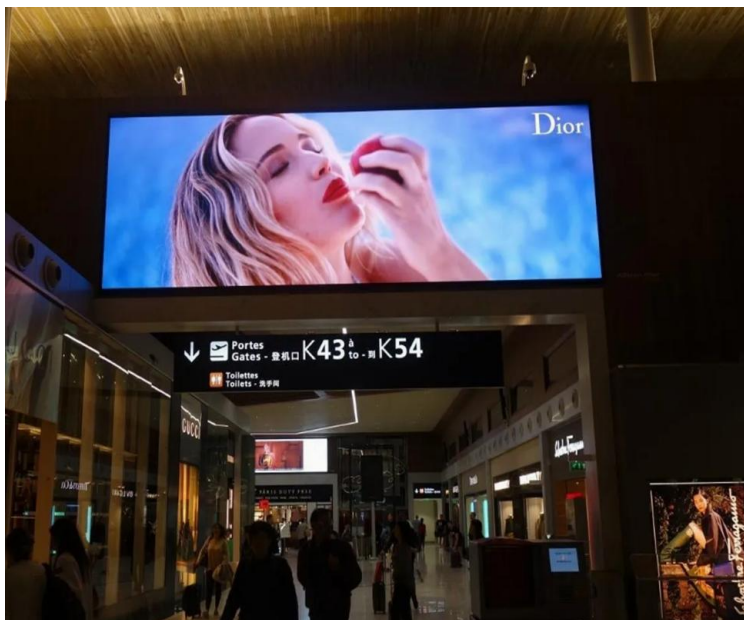
Project Case



Project Case



Project Case



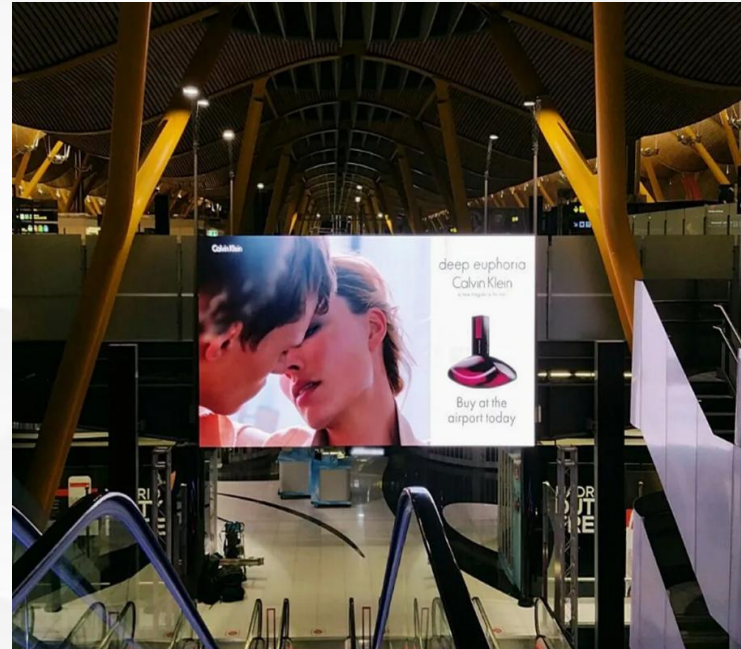
Project Case



Project Case



Project Case



Project Case



Service

- Quality: we have a strict quality control system. All displays will undergo aging tests for 24hours at least.
- Logo : your logo can be printed on the cabinet
- Package: support for wooden package and flight case both.
- MOQ: we accept sample order in small sqm , such as 2sqm , 4sqm.
- Warranty: 3 years , free spare parts & free technical support
- Lead time: 12 days after initial payment deposited
- Payment method: TT, Western Union

