



LED & LCD SCREEN

# Customized Sphere Screen Series

## Guangzhou JunChen Display Technology Co., Ltd.

Address: 303A, No. 6-2, Yagang Middle Road, ShiMen Street, Baiyun District Guangzhou City, Guangdong Province, China.

Contact: Junchen

Tel/whatsapp/Mob: +86 18818901997

Webiste: www.jcdisplay.com

شهادة - 증명서 - Certificate - Сертификат - 證明書

Shenzhen ZKT Technology Co., Ltd.  
1/F, No. 101, Building B, No. 6, Tangwei Community Industrial Avenue,  
Fuhai Street, Bao'an District, Shenzhen, China



### Certificate of Compliance

Certificate Number: ZKT-25063014977C

Certificate's Holder : Guangzhou JunChen Display Technology Co.,Ltd  
209-213, No. 59 Yagang Middle Road, Baiyun District,  
Guangzhou City

Manufacturer : Guangzhou JunChen Display Technology Co.,Ltd  
209-213, No. 59 Yagang Middle Road, Baiyun District,  
Guangzhou City

Trade Mark : N/A

Product : LED COB DISPLAY

Model(s) : P1.25  
P0.6 P0.7 P0.9 P1.25 P1.53 P1.56 P1.86 P1.876 P1.95 P2 P2.5  
P2.604 P2.976 P3 P3.076 P3.75 P3.91 P3.91-7.82 P2.6-5.8 P4  
P4.81 P4.75 P5 P5.33 P5.9 P6 P6.67 P8 P10 P10.4 P12.5 P15.625  
P16 P20 P25 P31.25 P50

Test Standard : EN IEC 62368-1:2024+A11:2024

This Attestation of Compliance is issued on a voluntary basis for electrical equipment below the voltage limits of Low Voltage Directive 2014/35/EU. The essential requirement are fulfilled accordingly based on the technical specifications applicable at the time of issuance. See also notes overleaf. It is only valid in connection with the test report number: ZKT-25063014977S.



This Certificate of Conformity is based on single evaluation of the submitted sample(s) of the above mentioned product. It does not imply an assessment of the whole product and relevant. Directives to be observed.  
☎ +86-400 000 9970 ☎ +86-755-22336688 ✉ zkt@zkt-lab.com 🌐 www.zkt-lab.com

شهادة - 증명서 - Certificate - Сертификат - 證明書

Shenzhen ZKT Technology Co., Ltd.  
1/F, No. 101, Building B, No. 6, Tangwei Community Industrial Avenue,  
Fuhai Street, Bao'an District, Shenzhen, China



### Certificate of Compliance

Certificate Number: ZKT-25063014978C

Certificate's Holder : Guangzhou JunChen Display Technology Co.,Ltd  
209-213, No. 59 Yagang Middle Road, Baiyun District,  
Guangzhou City

Manufacturer : Guangzhou JunChen Display Technology Co.,Ltd  
209-213, No. 59 Yagang Middle Road, Baiyun District,  
Guangzhou City

Trade Mark : N/A

Product : LED COB DISPLAY

Model(s) : p1.25  
P0.6, P0.7, P0.9, P1.25, P1.53, P1.56, P1.86, P1.876, P1.95, P2,  
P2.5, P2.604, P2.976, P3, P3.076, P3.75, P3.91, P3.91-7.82,  
P2.6-5.8, P4, P4.81, P4.75, P5, P5.33, P5.9, P6, P6.67, P8, P10,  
P10.4, P12.5, P15.625, P16, P20, P25, P31.25, P50

Test Standard : EN 55032:2015/A11:2020/A1:2020, EN 55035:2017/A11:2020,  
EN IEC 61000-3-2:2019/A1:2021/A2:2024,  
EN 61000-3-3:2013/A1:2019/A2:2021,  
EN 61000-4-2:2009, EN IEC 61000-4-3:2020,  
EN 61000-4-4:2012, EN 61000-4-5:2014/A1:2017,  
EN IEC 61000-4-6:2023, EN 61000-4-8:2010,  
EN IEC 61000-4-11:2020

This Attestation of Compliance is issued on a voluntary basis for electrical equipment below the voltage limits of EMC Directive 2014/30/EU. The essential requirement are fulfilled accordingly based on the technical specifications applicable at the time of issuance. See also notes overleaf. It is only valid in connection with the test report number: ZKT-25063014978S.



This Certificate of Conformity is based on single evaluation of the submitted sample(s) of the above mentioned product. It does not imply an assessment of the whole product and relevant. Directives to be observed.  
☎ +86-400 000 9970 ☎ +86-755-22336688 ✉ zkt@zkt-lab.com 🌐 www.zkt-lab.com

شهادة - 증명서 - Certificate - Сертификат - 證明書

Shenzhen ZKT Technology Co., Ltd.  
1/F, No. 101, Building B, No. 6, Tangwei Community Industrial Avenue,  
Fuhai Street, Bao'an District, Shenzhen, China



### SUPPLIER'S DECLARATION OF CONFORMITY

Certificate Number: ZKT-25063014979C

Certificate's Holder : Guangzhou JunChen Display Technology Co.,Ltd  
209-213, No. 59 Yagang Middle Road, Baiyun District,  
Guangzhou City

Manufacturer : Guangzhou JunChen Display Technology Co.,Ltd  
209-213, No. 59 Yagang Middle Road, Baiyun District,  
Guangzhou City

Trade Mark : N/A

Product : LED COB DISPLAY

Model(s) : p1.25  
P0.6, P0.7, P0.9, P1.25, P1.53, P1.56, P1.86, P1.876, P1.95, P2,  
P2.5, P2.604, P2.976, P3, P3.076, P3.75, P3.91, P3.91-7.82,  
P2.6-5.8, P4, P4.81, P4.75, P5, P5.33, P5.9, P6, P6.67, P8, P10,  
P10.4, P12.5, P15.625, P16, P20, P25, P31.25, P50

Test Standard : FCC Part 15 B,  
ANSI C63.4:2014

This Attestation of Compliance is issued on a voluntary basis for electrical equipment below the voltage limits of FCC standard. The essential requirement are fulfilled accordingly based on the technical specifications applicable at the time of issuance. See also notes overleaf. It is only valid in connection with the test report number: ZKT-25063014979S.



This Certificate of Conformity is based on single evaluation of the submitted sample(s) of the above mentioned product. It does not imply an assessment of the whole product and relevant. Directives to be observed.  
☎ +86-400 000 9970 ☎ +86-755-22336688 ✉ zkt@zkt-lab.com 🌐 www.zkt-lab.com

شهادة - 증명서 - Certificate - Сертификат - 證明書

Shenzhen ZKT Technology Co., Ltd.  
1/F, No. 101, Building B, No. 6, Tangwei Community Industrial Avenue,  
Fuhai Street, Bao'an District, Shenzhen, China



### Certificate of Compliance

Certificate Number: ZKT-25063014980C

Certificate's Holder : Guangzhou JunChen Display Technology Co.,Ltd  
209-213, No. 59 Yagang Middle Road, Baiyun District,  
Guangzhou City

Manufacturer : Guangzhou JunChen Display Technology Co.,Ltd  
209-213, No. 59 Yagang Middle Road, Baiyun District,  
Guangzhou City

Trade Mark : N/A

Product : LED COB DISPLAY

Model(s) : p1.25  
P0.6 P0.7 P0.9 P1.25 P1.53 P1.56 P1.86 P1.876 P1.95 P2  
P2.5 P2.604 P2.976 P3 P3.076 P3.75 P3.91 P3.91-7.82  
P2.6-5.8 P4 P4.81 P4.75 P5 P5.33 P5.9 P6 P6.67 P8 P10  
P10.4 P12.5 P15.625 P16 P20 P25 P31.25 P50

Test Method : IEC 62321-3-1:2013, IEC 62321-4:2013+A1:2017, IEC  
62321-5:2013, IEC 62321-6:2015, IEC 62321-7-1:2015, IEC  
62321-7-2:2017, IEC 62321-8:2017

The following products have been tested by us and found in conformity with the (RoHS) Directive 2011/65/EU Annex II amending Annex (EU)2015/863 and amending Annex (EU)2017/2102. It is possible to use CE Marking to demonstrate the conformity with this Directive. It is only valid in connection with the test report number: ZKT-25063014980R.



This Certificate of Conformity is based on single evaluation of the submitted sample(s) of the above mentioned product. It does not imply an assessment of the whole product and relevant. Directives to be observed.  
☎ +86-400 000 9970 ☎ +86-755-22336688 ✉ zkt@zkt-lab.com 🌐 www.zkt-lab.com



# Product Introduction



LED sphere display (also known as LED ball display, Globe LED display or LED video ball) is a new design and creative type of LED screen product. Its shape is spherical and can provide a 360-degree viewing angle effect.

It is different from the traditional LED display and has a unique 360-degree spherical appearance. Due to its unique design and visibility in all directions, it stands out among various LED displays.

The images and videos displayed by the spherical LED display have no image distortion and can instantly attract public attention.

In addition, it is an excellent choice for large public places (such as museum halls, casinos, gaming halls and airports) that require LED displays to display fascinating images or videos and interact with the audience.



# Product Parameters

Pixel Pitch	1.538mm	1.86mm	2mm	2.5mm	3mm
Module size	Customized				
Color Configuration	SMD 3 in 1 1R1G1B				
Chip Model	2153IC				
Package mode	SMD1010	SMD1515	SMD1515	SMD2121	SMD2121
Scan Mode	1/40 scan	1/32 scan	1/32 scan	1/27 scan	1/27 scan
Sphere Diameter	1.8m	2m	2.5m	3m	4m
Sphere Module 1	6 pcs	8 pcs	8 pcs	8 pcs	8 pcs
Sphere Module 2	6 pcs	10 pcs	50 pcs	50 pcs	50 pcs
Sphere Module 3	8 pcs	10 pcs	50 pcs	50 pcs	50 pcs
Brightness(cd)	850	850	850	850	1000
Resolution(total )	3600000	3630000	4900000	4520000	5580000
Sphere Area	8.5m <sup>2</sup>	12.56m <sup>2</sup>	19.6m <sup>2</sup>	28.26m <sup>2</sup>	50.24m <sup>2</sup>
Pixel Density(dot/m2)	422500	289444	250000	160000	111111
Weight	500kg	800kg	950kg	1060kg	2000kg
Viewing Distance	≥1.538m	≥1.86m	≥2m	≥2.5m	≥3m
Use Invironment	Indoor				
Gray Scale	14bit				
IP Rating	IP34				
Supply Voltage	AC100~240V(50~63Hz)				
Brightness Adjustable	Automatic or Manual				
Refresh Rate	3840Hz				
LED Life	100, 000 hours				
Operating Temperature	-20°C ~ +60°C				
Operating Humidity	10% - 90%RH				
Color Temperature	3200-9500k				



# Product Features

- Customized: Can be customized required as any sizes and any pixel pitches.
- Viewing angle: Perfect viewing angle with 360 degree.
- Effect: The creative appearance and wonderful showing effect attracts most attention during the usage.
- Structure: Aluminum material structure which lighter weighs and better for heat dissipation.
- Design: Special PCB design which can make sure the showing picture distortionless.





# Application



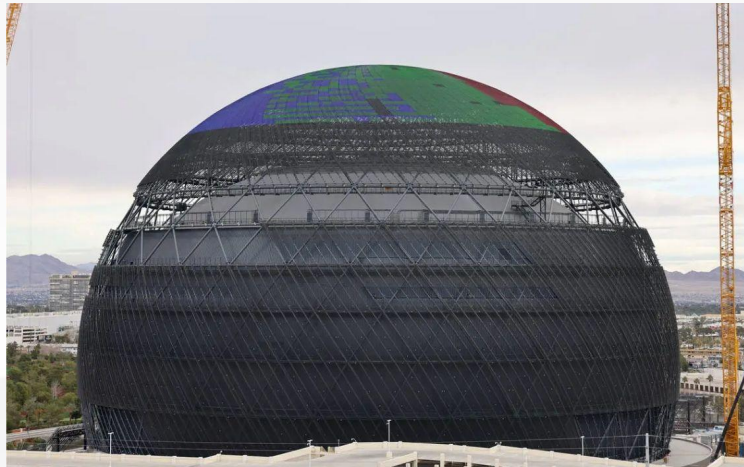
Shopping mall  
decoration



Exhibition hall  
decoration



Exhibition hall decoration



Architectural design



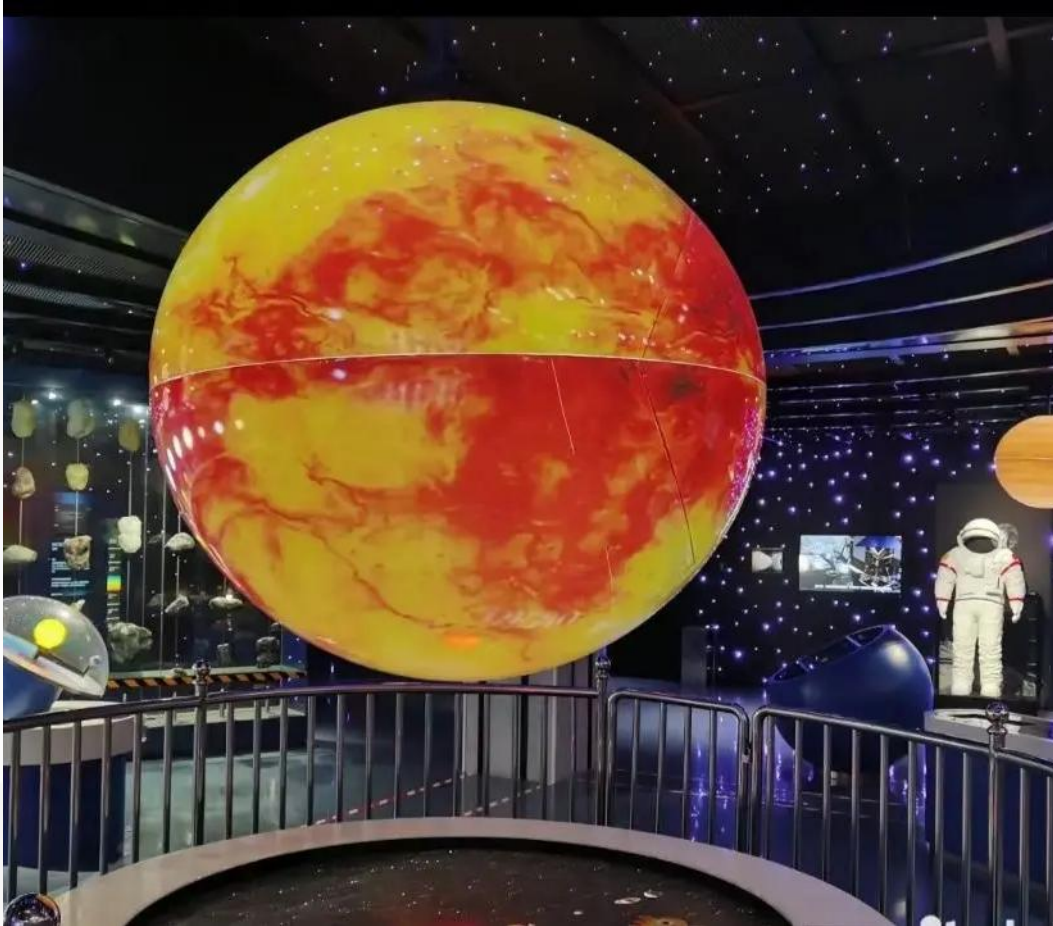
Exhibition hall  
decoration



Exhibition hall  
decoration



# Project Case





# Project Case



# Service

- Quality: we have a strict quality control system. All displays will undergo aging tests for 24hours at least.
- Logo : your logo can be printed on the cabinet
- Package: support for wooden package and flight case both.
- MOQ: we accept sample order in small sqm , such as 2sqm , 4sqm.
- Warranty: 3 years , free spare parts & free technical support
- Lead time: 12 days after initial payment deposited
- Payment method: TT, Western Union

