



**XIANGTONG
CONVEYOR BELT**

中国优质名牌产品



**祥通输送带
通达全世界**

**XIANGTONG
CONVEYOR BELT**

山东祥通橡塑科技有限公司

Shandong Xiangtong Rubber & Plastic Technology Co., Ltd.

Xiangtong rubber (group) technology is the production of various categories, different uses of rubber conveyor belt, rubber seals, rubber, chemical fiber products enterprise group. Founded on May 6, 2003, the company is located at No.1 Kaixuan Road, High-tech Industrial Development Zone, Jining city, Shandong Province. Registered capital of 300 million yuan, covers an area of 460 mu.

Xiangtong rubber and plastic has strong technical force and advanced equipment. We adopt the development strategy of combining independent research and development with introduction, improve production equipment and production process with high starting point, high level and high quality, so that the internal quality and appearance quality of products have reached the world advanced level. Group affiliated Yanzhou Xiangtong rubber and plastic, Jining Xiangtong chemical fiber, Shandong Taikono rubber products three enterprises. Has the standard modern production factory 2, there is more than 20 thousands square meters production workshop, workshop, advanced width 2.6 m and the steel cord conveyor belt production line 7, drum and plate vulcanizing machine conveyor belt production line 4, layered production width in 2.0 meters and below PVC, PVG fire retardant conveyor belt production line 8, raised edge conveyor belt special production line 2, There are more than 60 sets of core braid machines and 21 advanced conveyor belt production lines with fixed assets of 740 million yuan. It is a professional enterprise with large scale and strong development potential in China's conveyor belt production industry. The company has 856 employees, including 398 college and secondary school students, 126 professional and technical personnel.

With advanced production equipment, professional management team, first-class technology and first-class technology, Xiangtong rubber & Plastic has become a strong competitive enterprise in the same industry in China, and is hailed as a "dark horse" in the rubber conveyor belt industry of China by the industry and new and old customers. All xiangtong people have determination, confidence, ability, with first-class technology, first-class quality, first-class service, first-class reputation, to create "Xiangtong" brand high-quality brand conveyor belt.

Xiangtong rubber and plastic after nearly ten years of development, with excellent product quality, perfect after-sales service to win the praise of the majority of users. The company has passed ISO9001 international quality management system certification and ISO14001 environmental management system certification, products in the domestic and international markets have a high share, exported to the United States, Canada, Germany, Britain, Australia, India, Indonesia, Thailand, Brazil, South Africa, Japan, the Middle East and other more than 20 countries and regions.

"Quality casting brand, reputation to win the market", Xiangtong rubber and plastic with quality and reputation to win the care of old and new customers support and social recognition, It has been awarded the honorary titles of "Chinese Enterprise Integrity Management Demonstration Unit", "China Rubber Industry Top 100 Enterprises", "China Conveyor Belt Top 10 Enterprises", "National Quality, Service and Reputation AAA Level Demonstration Unit", "China Rubber Rubber Rubber Belt Branch Vice Director unit" and so on. Xiangtong brand products have been rated as "Shandong famous Brand products", "China high-quality Famous brand products", "The most influential brand in China conveyor Belt field", "Shandong Famous Trademark" and other titles.



求实 创新发展 跨越

山东祥通橡塑科技有限公司
Shandong Xiangtong Rubber & Plastic Technology Co., Ltd.

祥通输送带

一质一城 一质一城
YI ZHI DE JI SHU YI ZHI DE

祥通橡塑（集团）科技是以生产各种品类、不同用途的橡胶输送带、橡胶密封件为主的橡塑、化纤制品的企业集团。公司成立于2003年5月6日，地址位于山东省济宁市高新技术产业开发区凯旋路1号。注册资本叁亿元人民币，占地面积460亩。

祥通橡塑技术力量雄厚、设备先进，采取自主研发和引进相结合的发展策略，高起点、高水平、高质量的进行生产设备、生产工艺的改进，使产品的内在质量和外观质量均已达到世界先进水平。集团下属兖州祥通橡塑、济宁祥通化纤、山东泰科诺橡胶制品三家企业。拥有规范的现代化生产厂区2个，有生产车间、厂房20余万平方米，国内先进的宽度2.6米及以下钢丝绳芯输送带生产线7条，鼓式及平板硫化机分层输送带生产线4条，生产宽度在2.0米及以下PVC、PVG阻燃输送带生产线8条，异型挡边输送带生产线2条，整体带芯编织机60余台，共计各类先进的输送带生产线21条，固定资产7.4亿元，是中国输送带生产行业中规模较大、发展潜力较强的专业化企业。公司现有员工856名，其中大中专生398名，专业技术人员126名。

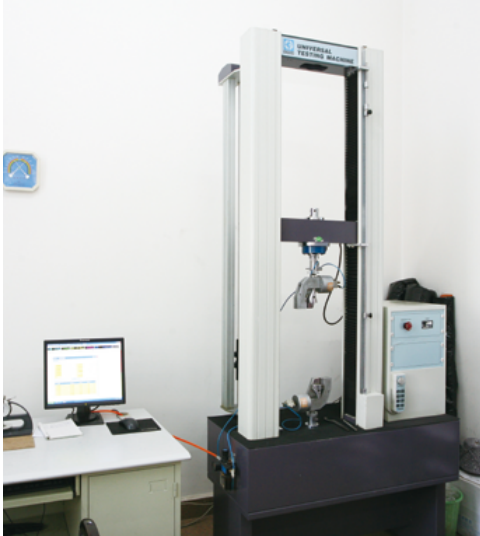
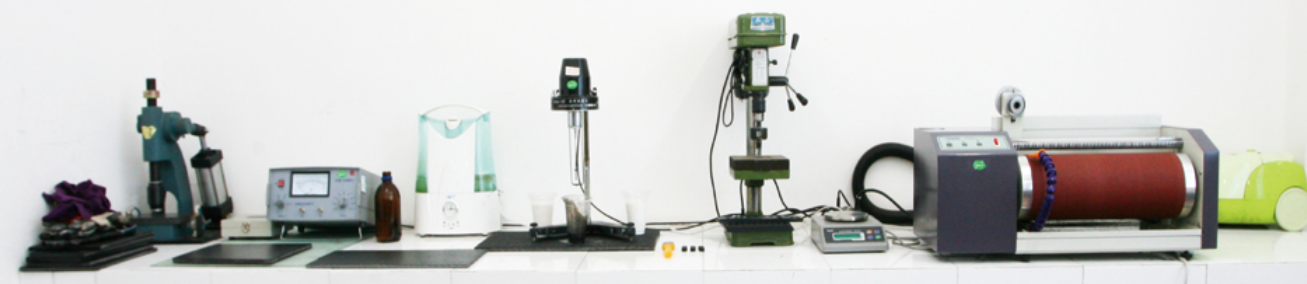
先进的生产设备、专业化的管理团队、一流的工艺、一流的技术使祥通橡塑已成为国内同行业中具有较强竞争能力的企业，被行业和新老客户喻为中国橡胶输送带行业中的一匹“黑马”。全体祥通人有决心、有信心、有能力、以一流的技术、一流的品质、一流的服务、一流的信誉、全力打造“祥通”牌优质名牌输送带。

祥通橡塑经过近十年的发展，以过硬的产品质量、完善的售后服务赢得了广大用户的赞誉。公司已通过了ISO9001国际质量管理体系认证及ISO14001环境管理体系认证，产品在国内和国际市场上都占有较高的份额，远销美国、加拿大、德国、英国、澳大利亚、印度、印尼、泰国、巴西、南非、日本、中东等二十多个国家和地区。

“质量铸造品牌、信誉赢得市场”，祥通橡塑用质量和信誉赢得了新老客户的关心支持和社会认同，先后荣获“中国企业诚信经营示范单位”、“中国橡胶工业百强企业”、“中国输送带十强企业”、“全国质量、服务、信誉AAA级示范单位”、“中橡协胶管胶带分会副理事长单位”等荣誉称号。祥通牌产品先后被评为“山东名牌产品”、“中国优质名牌产品”、“中国输送带领域最具影响力品牌”、“山东省著名商标”等称号。



完善的检测试验设备 Perfect Testing Equipment

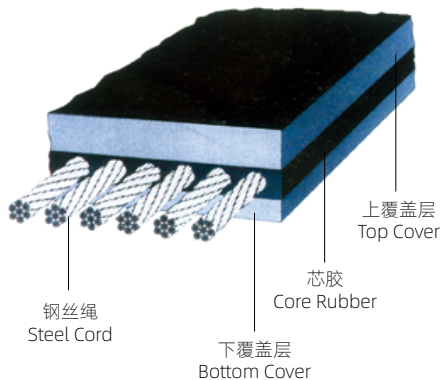


先进的生产设备 Advanced Production Equipment



一般用途钢丝绳芯输送带 General Application ST Belt

普通结构型 Standard



特点 Characteristics



拉伸强度大、寿命长、使用伸长小、成槽性好、耐曲挠性好，适用于长距离、大运量、高速度输送物料。

Standard steel cord belt have such characters as high strength, long work life, low elongation, good troughability which enable belt to be used for long distance, heavy duty and high speed of conveying materials.

ST系列钢丝绳芯输送带主要技术参数 Technical parameters for reference

	ST 630	ST 800	ST 1000	ST 1250	ST 1600	ST 2000	ST 2500	ST 3150	ST 3500	ST 4000	ST 4500	ST 5000	ST 5400	ST 6300	ST 7000	ST 7500
纵向拉伸强度 Longitudinal tensile strength N/mm	630	800	1000	1250	1600	2000	2500	3150	3500	4000	4500	5000	5400	6300	7000	7500
钢丝绳最大公称直径 Maximum nominal diameter of steel wire rope mm	3.0	3.5	4.0	4.5	5.0	6.0	7.2	8.1	8.6	8.9	9.7	10.9	11.3	12.8	13.5	15.0
钢丝绳间距 Steel Cord pitch mm	10	10	12	12	12	12	15	15	15	15	16	17	17	19.5	19.5	21
覆盖层最小厚度 Minimum thickness of overburden	4.0	4.0	4.0	4.0	4.0	4.0	5.0	5.5	6.0	6.5	7.0	7.5	8.0	10.0	10.0	10.0
宽度规格 Width (mm)	钢丝绳根数 The amount of steel cord rope															
800	75	75	63	63	63	63	50	50	50	51	48	45	45	N/A	N/A	N/A
1000	95	95	79	79	79	79	64	64	64	64	59	55	55	N/A	N/A	N/A
1200	113	113	94	94	94	94	76	76	77	77	71	66	66	58	59	54
1400	133	133	111	111	111	111	89	89	90	90	84	78	78	68	69	64
1600	151	151	126	126	126	126	101	101	104	104	96	90	90	78	80	73
1800	171	171	143	143	143	143	114	114	117	117	109	102	102	89	90	83
2000	191	191	159	159	159	159	128	128	130	130	121	113	113	99	100	92
2200	211	211	176	176	176	176	141	141	144	144	134	125	125	109	110	102
2400	231	231	193	193	193	193	155	155	157	157	146	137	137	119	119	110

整体织物芯输送带 (PVC PVG) Solid Woven Conveyor Belts (PVC PVG)

特点 Characteristics

整体不脱层、伸长小、抗冲击、耐撕裂、机械接头性能好，主要在煤矿井下使用。

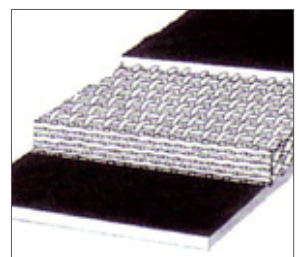
全塑型整芯输送带(PVC型)、用于倾角 16° 以下干燥条件的场合。

橡胶面整芯输送带(PVG型)，用于倾角 20° 以下潮湿有水的场合。

Suitable to use in underground coal mine, for its short elongation, anti-impact, tear resistant, easy for splicing.

PVC, use for incline angle of $\leq 16^\circ$, and dry environment.

PVG, use for incline angle of $\geq 20^\circ$, and damp environment, even with water.



整芯式织物芯输送带规格系列 Solid Woven Textile Belt Series

型号 Model	级别	整体拉伸强度N/mm Tensile strength as a whole, N/mm		整体扯断长率%不小于 Elongation at break≥%		带宽 Width mm	每卷带长 Length of each roll m	带参考质量kg/m ² Reference to quality of belt,kg/m ²	
		纵向 Longitudinal	横向 Transversal	纵向 Longitudinal	横向 Transversal			PVC	PVG
680S	四级	680	265	15	18	500~2000	100*	11.2	16.8
800S	五级	800	280					12.0	17.1
1000S	六级	1000	300					14.0	17.6
1250S	七级	1250	350					15.5	19.6
1400S	八级	1400	350					16.5	20.8
1600S	九级	1600	400						
1800S	十级	1800	400						
2000S	十一级	2000	400						
2240S	十二级	2240	450						
2500S	十三级	2500	450						

注：单卷长度100m，也可根据用户需求单卷可达200m

分层式织物芯输送带规格系列 Multi-ply Textile Belt Series



◎ 品种 Type

分层式织物芯输送带根据覆盖层的不同，有普通型、耐热型、耐高温型、耐磨型、耐热磨型、一般阻燃型、导静电型、耐酸碱型、耐油型、食品型等品种。

According to cover character, multi-ply fabric belt include standard, heat resistant, high temperature resistant, abrasion resistant, abrasion & heat resistant, standard flame resistant, anti-static, acid resistant, oil resistant, food class, etc.

◎ 输送带的执行标准及主要技术指标 Applicable standard of belt and technical parameters

品种 Type	标准及主要指标 Standard and parameters
普通型 Normal Grade	GB/T 7984-2013 DIN, AS
耐热型 Heat resistant	GB/T20021-2017 T ₁ 型、T ₂ 型、T ₃ 型
耐高温型 High temperature resistant	GB/T20021-2017 T ₄ 型
耐热耐磨型 Abrasion & heat resistant	邵泊尔磨耗量≤150mm ³ Shore abrasion rates≤150mm ³
耐磨型 Abrasion resistant	邵泊尔磨耗量≤90mm ³ Shore Abrasion≤90mm ³ DIN22103X/Y/W, AS1332
一般难燃型 Standard flame resistant	GB10822-2014 DIN22102K, DIN22109V
导静电型 Anti-static	表面电阻10 ⁵ 欧姆 Surface resistance 10 ⁵ Ω
耐寒型 Cold resistant	HG/T 3647-2014 脆性温度-50°C H/T3647-1999 brittleness -50°C

芳纶织物芯输送带 Aramid Conveyor Belts

◎ 结构特点及用途 Construction Features and Applications

骨架材料采用高强力芳纶与锦纶 66 直经直纬复合帆布。这种结构的特点是帆布的强度保持率高、伸长小(<0.5%) 横向耐冲击性能佳，因此不需要添加抗撕裂网。芳纶帆布输送带适用于高强度、长距离、大运量的输送系统。配合耐磨耗、耐热、难燃或阻燃盖胶，可适应于各种挑战的工况。

Belt carcass is reinforced with aramid fabric woven with straight Aramid warp and straight Nylon 66 weft construction. High strength efficiency with low elongation in use (<0.5%) and high transverse impact resistance are characteristic of this construction. Use of breakers is thus not required. Suitable for high tension, long distance, high tonnage conveyor system. Combined with wear resistant, heat resistant, flame resistant, or fire retardant covers, can be applied to various challenging environments.

◎ 市场 Market

港口、水泥、煤矿、采石场、电厂、钢厂等行业。

Harbor, cement works, coal mine, quarry, power plant and steel mill etc

◎ 芳纶输送带参数 Technical Parameters for Aramid Conveyor Belts

分类 Classification	带体拉伸强度 Belt tensile Strength N/mm		断裂伸长率 Elongation At Break%	额定伸长 10% Rated Elongation of 10%	帆布厚度 Fabric Gauge	盖胶厚度 Cover Gauge mm		带体宽度 Belt Width	盖胶类型 Cover Grade
	经向 Warp ≥	纬向 Weft ≥	经向 Warp ≥	≤	mm	上盖胶 Top Cover	下盖胶 Bottom Cover		
DPP315	315	120	5	0.5	1.8	6-25	5-15	500-2400	耐磨型、 抗冲击型、 耐热型耐油型、 耐酸碱型、 阻燃型、 耐寒型等 Abrasion Resistant. Impact Resistant. Heat Resistant Chemical Resistant. Fire Resistant. Cold Resistant
DPP500	500	120	5	0.5	1.8				
DPP630	630	120	5	0.5	2.1				
DPP800	800	150	5	0.5	2.2				
DPP1000	1000	150	5	0.5	2.4				
DPP1250	1250	150	5	0.5	2.7				
DPP1400	1400	150	5	0.5	2.8				
DPP1600	1600	150	5	0.5	2.9				
DPP1800	1800	150	5	0.5	3.2				
DPP2000	2000	150	5	0.5	3.6				
DPP2500	2500	150	5	0.5	4				
DPP3150	3150	150	5	0.5	4.3				

- 芳纶输送带最突出的性能是其高强度、高模量和出色的耐热性。
- 芳纶输送带采用高强力芳纶做为骨架材料，可提供高强力、在苛刻的输送系统中优于多层和直经方式的织物输送带。
- 芳纶输送带具有优异的耐撕裂性能，金属废料或碎片经常划入输送带带体，引起输送设备损坏和纵向撕裂，此芳纶输送带设计可防止异物划入。

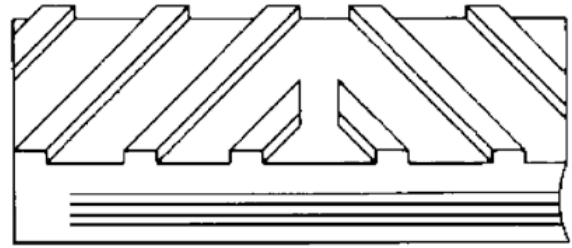
- The most prominent properties of aramid fibers are high strength, high modulus and excellent heat resistance property.
- Taking the high-strength aramid fiber as the fabric plies, aramid fiber fabric conveyor belt are strong and provide a better overall value than multi-ply and straight-warp fabric construction in high abuse applications.
- The aramid fabric conveyor belts have super rip resistant performance. Scrap metal or debris often get "hung up" in the structure of the conveyor, causing equipment damage and slits or cuts in long sections of belt. The design of the aramid fabric conveyor belts helps dislodge and expel foreign objects.

大倾角输送带 Steep Angle Belt

◎用途 Use

广泛应用于煤炭、矿山、电力、冶金、化工、轻工、粮食等领域输送物料。

To carry materials widely used in coal mine, mine, power station, chemical industry, light industry, grain and so on.



花纹输送带 Patterned belt

◎特点 Characteristics

输送带倾角 0° — 45° ，防止物料下滑，提高输送能力。

The angle is between 0° - 45° , prevent material from sliding to increase the carrying capacity.

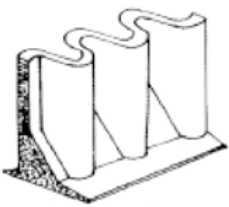


波形挡边输送带 Corrugated Sidewall Belts

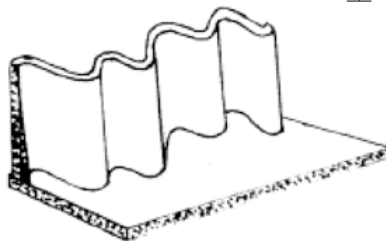
◎特点 Characteristics

波形挡边种类及示意图 Corrugated Sidewall Type

S型

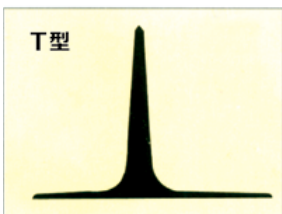


W型

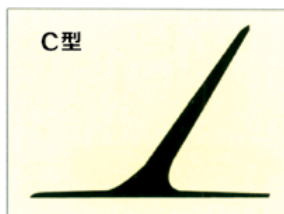


隔板种类及示意图 Cleat Type

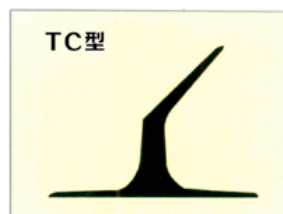
T型



C型



TC型



TCS型



祥通输送带 通达全世界
全国销售服务热线: 4006730007

中国优质名牌产品
山东名牌产品
山东省著名商标
中国质量过硬知名品牌
中国输送带领域最具影响力品牌
全国质量、服务、信誉AAA级示范单位
中国企业诚信经营示范单位
中国橡胶工业百强企业
中国输送带十强企业
中橡协胶管胶带分会副理事长单位



祥通输送带
XIANGTONG CONVEYOR BELT

公司地址:山东济宁高新区凯旋路1号(祥通工业园)

Address:1 Kaixuan Road,High-Tech Zone Jining ,Shandong China.

分公司地址:山东济宁市兖州区兖颜路鲁宝工业园

Branch address: Lubao Industrial Park yanyan Road, Yanzhou District,
Jining city, Shandong Province

电话(TEL):0537-2935111 2930111

传真(FAX):0537-2935111

邮编(POST):272000

网址(HTTP):www.sdxiangtong.com.cn

电子信箱(E-MAIL):sales@sdxttrading.com