



Fresh*CPAP* CPAP Cleaner Pro

Model No.: Q8

Thank You.

Thank you for purchasing the Q8 CPAP Cleaner Pro by FreshCPAP. We are dedicated to providing our customers with quality products for building a health living. Should you have any questions or concerns about using your new product, feel free to reach out to our helpful customer support team at service. We hope you enjoy your new product!

PACKAGE CONTENTS

- 1 x CPAP Cleaner Pro
- 1 x Adapter Set
- 1 x Tube Adapter
- 1 x User Manual
- 6 x Carbon Filter Cotton



Q8



Adapter Set



Tube Adapter



Manual



Activated Carbon Filter Cotton

SPECIFICATIONS

Size	230x230x185mm
Weight	1.56kg
Input	100-240V~50/60Hz
Output	5V2A
Store temperature	-20~+55°C
Operation temperature	-5~+45°C
Power	5W

SAFETY INFORMATION

IMPORTANT: Please read and comply with all of the instructions and warnings provided this manual before using the product. Failure to comply with the instructions and warnings provided herein may result in inaccurate results and/or damage to the product itself.

Warning: To reduce the risk of burns, breath hard, electric shock or injury:

- ⚠ **DO NOT** stare at the UV light or expose skin directly to UV light
- ⚠ **DO NOT** use the CPAP equipment immediately after ozone disinfection, residual ozone may hurt your respiratory system, please wait until the odor is clear before using the equipment.

- ⚠ **DO NOT** disassemble or repair the product, in case of causing damage to the product.
- ⚠ **DO NOT** operate or place the CPAP Cleaner Pro on or near hot surfaces such as ovens, heaters, or active fireplaces
- ⚠ **Keep** this CPAP Cleaner Pro out of reach from Children
- ⚠ **Keep** the product away from water or other liquid.
- ⚠ **ONLY** store this product indoors away from direct sunlight or chemicals
- ⚠ **Please** use the original power adapter and USB cable, in case of the abnormality of this product.
- ⚠ **Please** don't move or open the lid while the machine is running.

FUNCTION DIAGRAM

1.UV light

2.Key panel

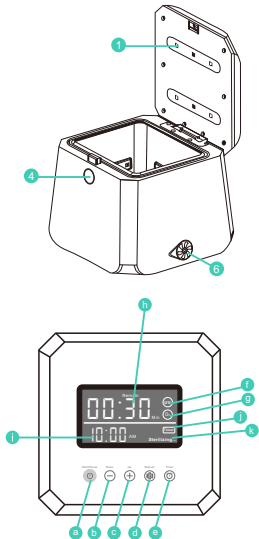
a.Start/Pause b.- c.+ d.Manual e.Timer

3.Display panel

f.UV indicator g.Ozone indicator

h.Remaining disinfection time i.Clock

j.Manual/Timer mode k.Working indicator



FUNCTION DIAGRAM

4. Open button

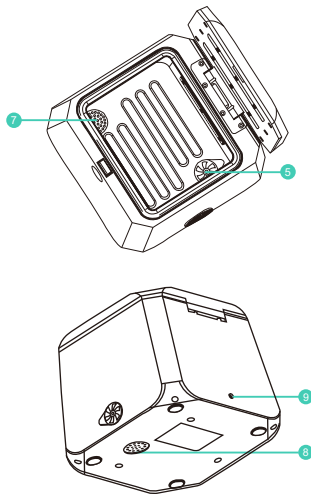
5. Internal sealing lid

6. External sealing lid

7. Inner Activated Carbon Filter

8. Outer Activated Carbon Filter

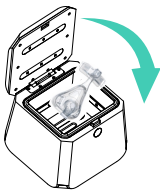
9. DC input



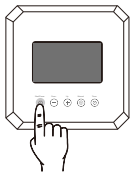
MANUAL MODE SETTING

1. How to run UV disinfection in manual mode

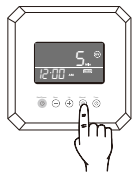
- 1.1 Put the items into the chamber (CPAP mask/tubing/phone etc), and close the lid
- 1.2 Press Start/Pause button to turn on
- 1.3 Press Manual button to switch the mode until the UV indicator is on
- 1.4 Press +/- button to adjust the duration, default UV disinfection time is 5-10-15min.
- 1.5 Press Start/Pause button to start disinfection



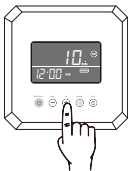
1.1



1.2



1.3



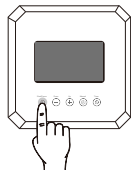
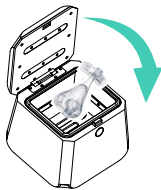
1.4



1.5

2.1 How to run ozone internal disinfection in manual mode

2.1.1 Put the items into the chamber(CPAP mask/tubing/etc), open the internal sealing lid, close the lid.

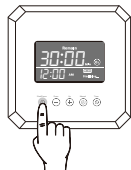
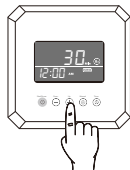
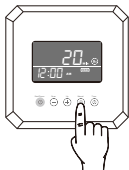


2.1.1

2.1.2

2.1.2 Press Start/Pause button to turn on

2.1.3 Press Manual button to switch the mode until the ozone indicator is on



2.1.4 Press +/-button to adjust the duration, default ozone disinfection is 20-30-40min.

2.1.5 Press Start/Pause button to start disinfection

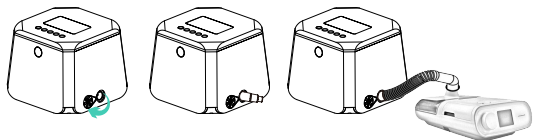
2.1.3

2.1.4

2.1.5

2.2 How to run ozone external disinfection in manual mode

2.2.1 Open the external sealing lid, connect tubing to CPAP machine by tube adapter, and close the lid.



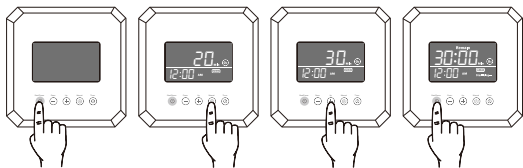
2.2.1

2.2.2 Press Start/Pause button to turn on

2.2.3 Press Manual button to switch the mode until the ozone indicator is on

2.2.4 Press +/- button to adjust the duration, default ozone disinfection is 20-30-40min.

2.2.5 Press Start/Pause button to start disinfection



2.2.2

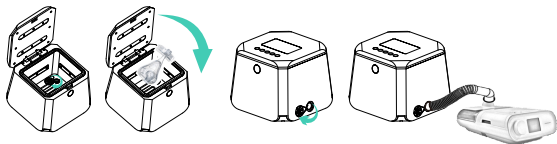
2.2.3

2.2.4

2.2.5

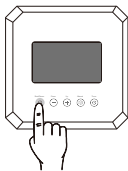
3. How to run UV + ozone disinfection mode in manual mode

- 3.1 Put the items into the chamber (CPAP mask/tubing/etc), open the internal sealing lid, close the lid.
- 3.2 Open the external sealing lid, connect tubing to CPAP machine, and close the lid.
- 3.3 Press Start/Pause button to turn on.
- 3.4 Press Manual button to switch the mode until the UV and ozone indicator are both on, the UV and Ozone working time are continue to single mode
- 3.5 Press Start/Pause button to start disinfection (UV sterilization first and then goes to ozone)

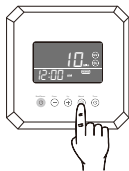


3. 1

3. 2



3. 3



3. 4



3. 5

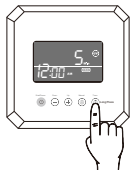
AUTO MODE SETTING

4. How to set the clock

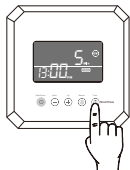
- 4.1 Press and hold the Timer button, and press +/- to adjust number of hours
- 4.2 Then press the timer button switch to minutes flashing, and press +/- to adjust the number of minutes

5. How to set the disinfection timer mode

- 5.1 Set the clock to ensure that it is consistent with the local natural time (need to reset after each power off)
- 5.2 Choose one of the three disinfection mode mentioned above and follow the instruction above to set the disinfection mode and duration.
- 5.3 Press Timer button to adjust the disinfection time you need, then the Timer icon lights up, indicating that the timer mode is set.



4.1



4.2

After using your ventilator, you can put the items into the chamber or connect them to the cleaner to sterilize automatically at a certain time every day.



5.1



5.2



5.3

6. Replace filter cotton

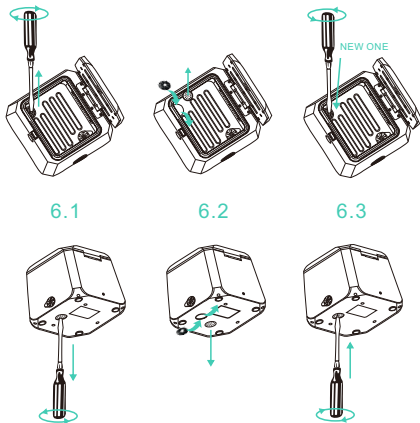
6.1 Remove the screw with a screwdriver;

6.2 Remove the filter cover;

6.3 Replace the old filter cotton with new filter cotton;

6.4 Reassemble the filter cover and the screw.

Tips : The filter cotton is recommended to be replaced every 2 months



ROUTINE CARE

1. When not using the product for a long time, please put it in the packaging box.
2. Do not place it in the damp or in the sun for a long time.
3. When using the product to sterilize, please put it in a dry, clean and ventilated environment.
4. Do not crack or strongly extrude the product, in case of shocking shell fragments and the internal precise electronic devices.
5. Do not use volatile liquids or organic liquids to wipe the product, or it may damage the surface of the product.

TERMS & POLICY

FreshCPAP warrants all products to be of the highest quality in material, craftsmanship and service for a minimum of 1 year, effective from the date of purchase categories. For specific warranty terms, please refer to your product's listing page or operation manual.

Under the limited warranty, FreshCPAP will replace or refund any product found to be defective due to manufacturer flaws based on eligibility.



Fresh*CPAP*

Clean Easier Breathe Fresher