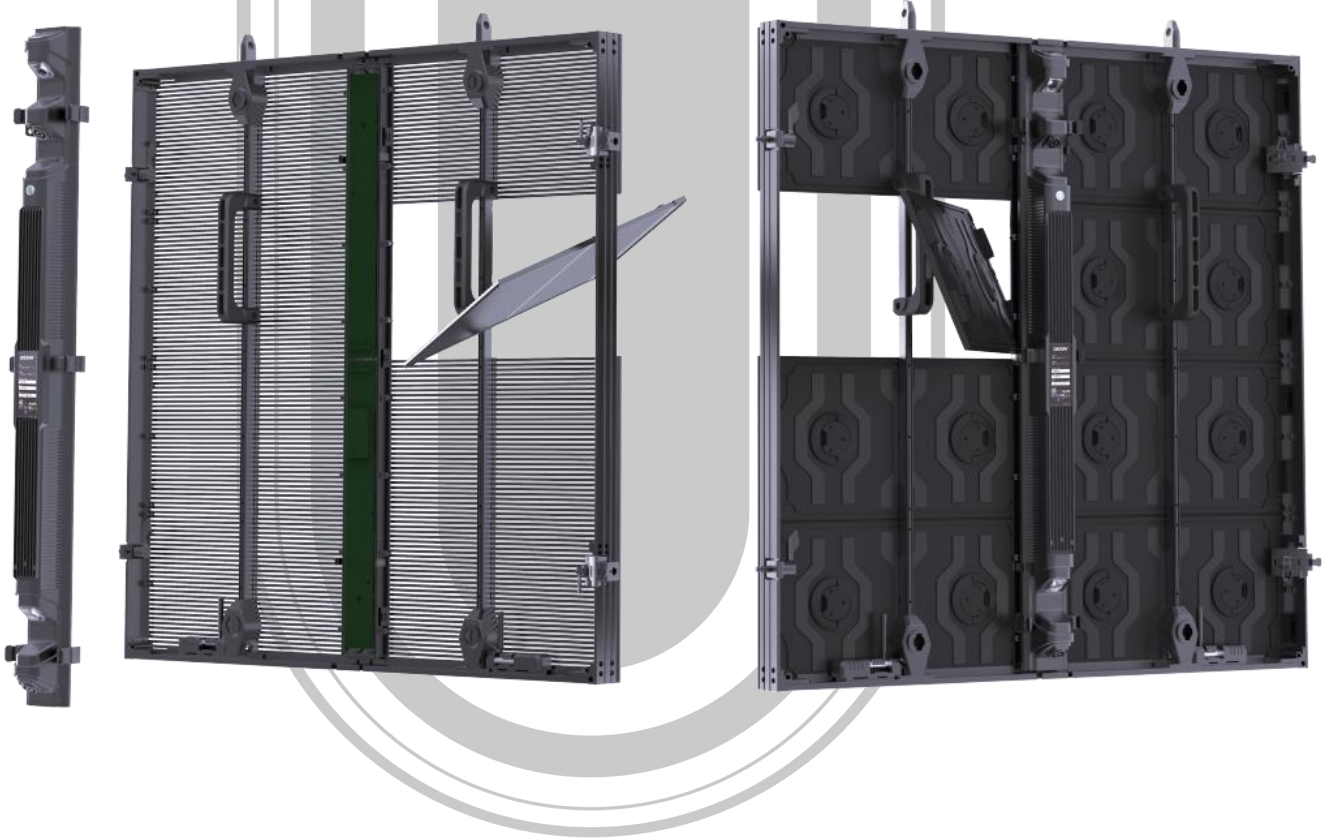




RB Series

- High transparency outdoor rental LED screen
- Ultra light & slim design, ideal for large scale stage application
- Available sizes: 1000×1000 mm, 500×1000 mm, minimum weight: 16.5 kg/m²
- Maximum transparency reaches 62%
- Supports -10°~10° bending, applicable for concave, convex, corner & angled splicing

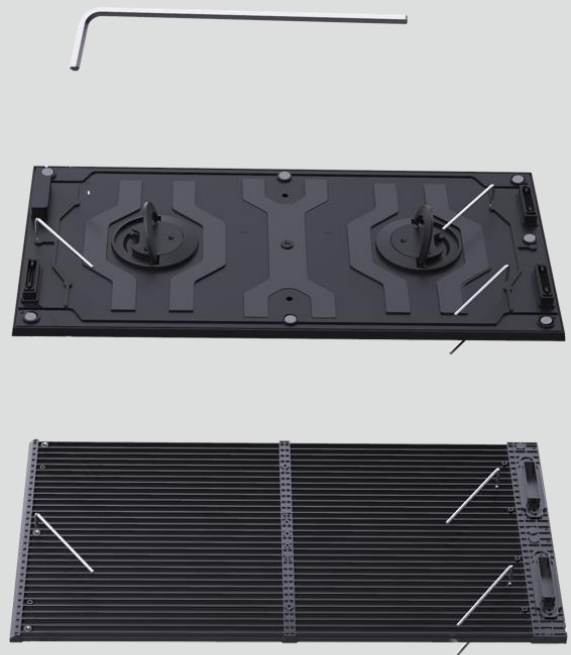


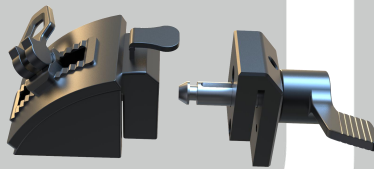
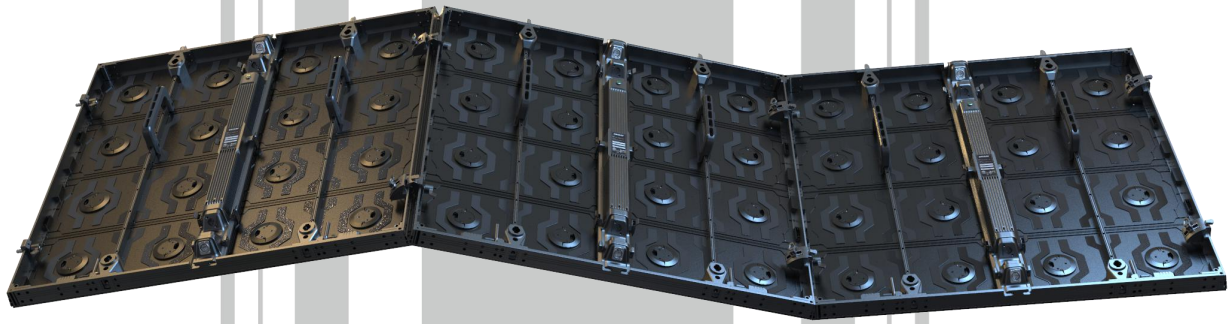
- Modular design, power supply & modules support quick hot plug, easy maintenance
- Module features magnetic attraction & safety hand screw structure, enabling full front & rear serviceability
- Hub board built with fuse design, engineered with multi-level safety protections
- Transparent panel & conventional panel support mutual splicing

Module size: 500×250 mm
 Transparent & solid modules are optional

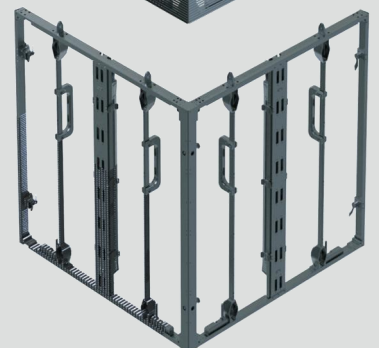
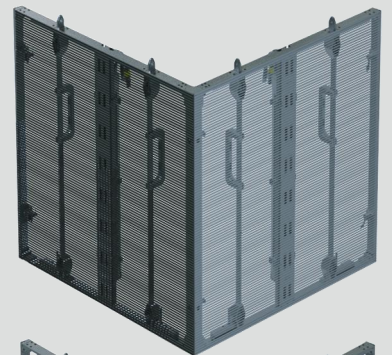
RB transparent module bottom frame features anti lamp collision structure

Integrated LED driver design applicable for 7.8, 10, 15 pixel pitches
 Free of green band defect, convenient for maintenance

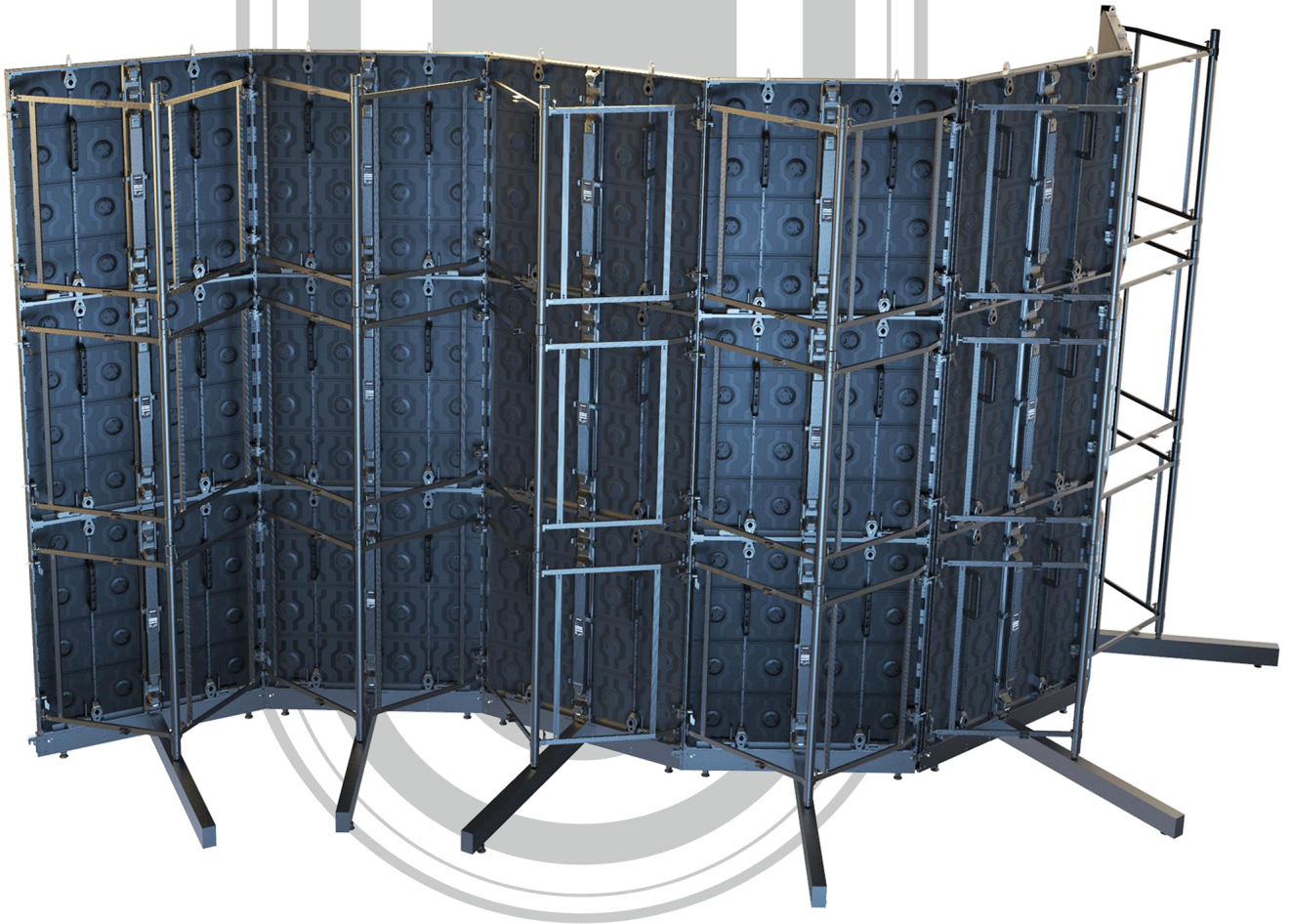




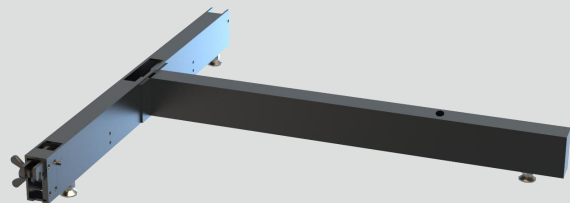
Five curve locks available: -10° , -5° , 0° , $+5^\circ$, $+10^\circ$



90 degree right angle splicing
Four side column splicing
Flat, concave & convex layout
Flexible mutual combination
Unlocks endless creative possibilities for dynamic stage designs



- Supports flat & curved stacking
- Stacking and hanging bars feature a universal, interchangeable design
- Conventional frame & windproof reinforced rear frame are optional, fit diverse application scenarios



RB stacking accessories

Universal hanging & stacking bar

1-in-1: 1000×50×100 mm

2-in-1: 2000×50×100 mm

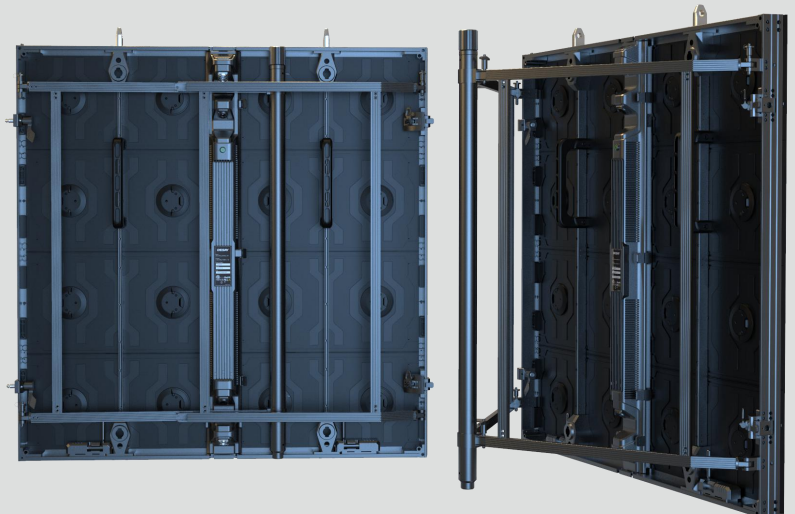
Rear Frame

1-in-1: 1000×300×50 mm

2-in-1: 2000×300×50 mm

Ground support bar: 700×50×100 mm

Quick lock for rear frame





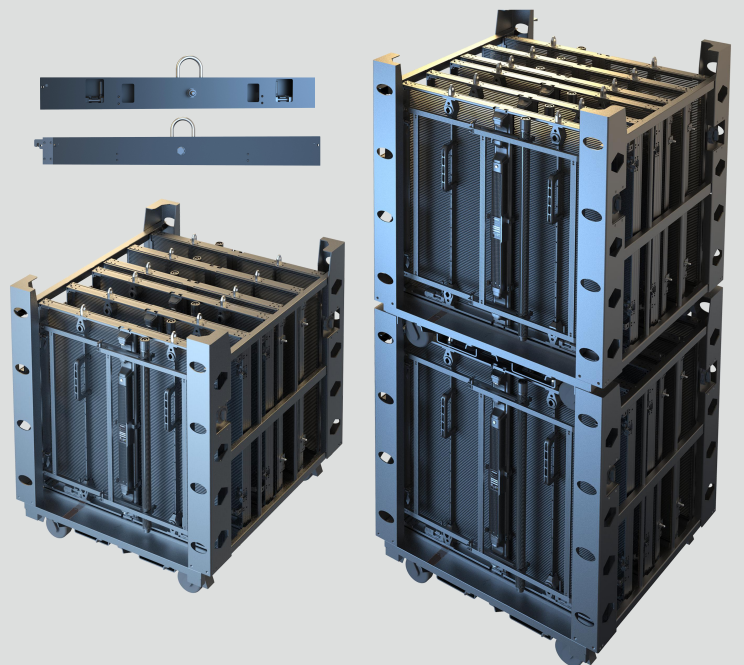
Hanging bar & dolly available
 Max hanging load: 15 panels

Hanging bar accessories: 1-in-1
 Dimensions: 959×100×50 mm

Dolly loading capacity: 6 panels per dolly
 Standard industrial size, suitable for truck transportation
 20 ft container: 8 trolleys / 64 sqm LED system
 40 ft container: 34 trolleys / 272 sqm LED system

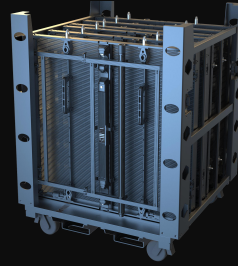
Supports double stacking

Dolly features:
 Serves directly as shipping packaging
 Convenient for vertical stacking & hoisting





Flight case specification
 Loading specifications: 6 panels per case
 Dimension: 1070×825×1250 mm (H)



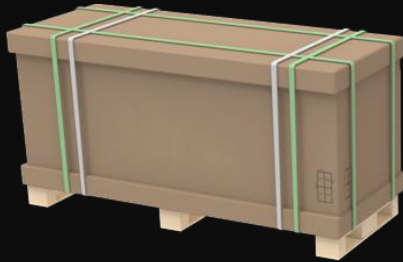
Dolly packaging specification
 Loading specifications: 6 panels per dolly
 Dimension: 1104×1092×1322 mm (H)



Data cable
 Neutrik & Seetronic connectors optional
 Vertical jumper cable length: 0.5 m



Power cable
 Neutrik & Seetronic connectors optional
 Vertical jumper cable length: 0.5 m



Carton packaging specification
 Loading specification: 6 panels per carton
 Dimension: 1070×805×1200 mm (H)

Specifications

Parameter	Unit	RB3-7	RB7	RB8	RB10	RB15
Pixel pitch	mm	3.9x7.8	7.8x7.8	8.3x8.3	10.4x10.4	15.6x15.6
Brightness	nits	≥4000	≥5000	≥5000	≥5000	≥8000
Pixel configuration	R/G/B	SMD 3 in 1				
Viewing angle-Horizontal (50% brightness)	Deg.	140 (+70/-70)				
Viewing angle-Vertical (50% brightness)	Deg.	140 (+70/-70)				
Recommended minimum viewing distance	m	4	7	8	10	15
Panel width	mm	1000				
Panel height	mm	1000/500				
Panel depth	mm	80				
Panel area	m ²	1				
Panel material		Aluminum				
Panel weight	Kg	16.5/11				
Ingress protection (front/back)	IP	65/54				
Pixel matrix per panel		256×128/256×64	128×128/128×64	120×120/120×60	96×96/96×48	64×64/64×32
Brightness control		255				
Gray scale	bit	14				
Frame rate	Hz	50/60				
Display refresh rate	Hz	3840/7680				
Input voltage	VAC	100~240				
Input power frequency	Hz	50~60				
Input power (Max.)	W/m ²	550±10%	550±10%	550±10%	550±10%	650±10%
Input power (Avg.)	W/m ²	192±10%	192±10%	192±10%	192±10%	210±10%
Operating temperature range	°C	-15 ~ +55				
Lifetime (50% brightness)	Hours	100,000				
Transparency	%	50	60	60	62	65