



RB Series

- . Ultra light and slim large panel for stage
- . 1000mm*1000mm , minimum weight 16.5KG/m²
- . Transparency up to 62%
- . IP65 both for front and rear
- . Available for -10°~10°concave & convex & corner&angle combination

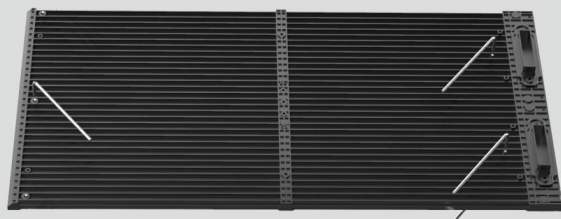
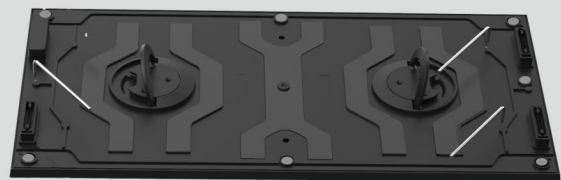


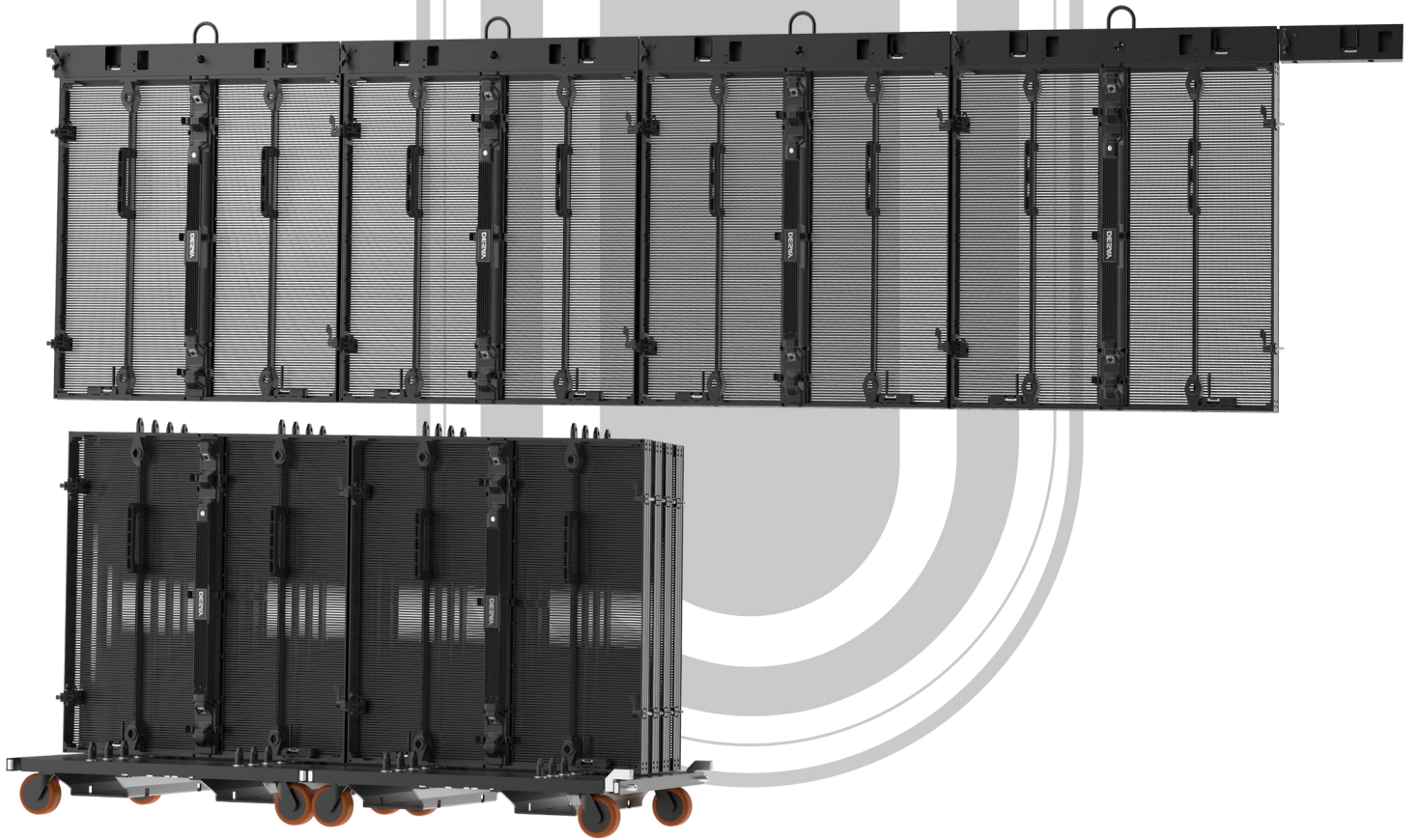
- . Modular design, power box/module support quick hot plug, easy maintenance
- . Module adopts magnetic suction + safety hand screw design, front and rear maintenance
- . Hub card with fuse design, high safety
- . Transparent panel and solid panel can be mutually spliced

Module size: 500mm* 250mm
 Transparent module&solid module optional

RB transparent module bottom shell frame with anti-lamp collision design

Integrated LED driver design available for pitch 7.8, 10, 15
 No green band phenomenon, easy repairing





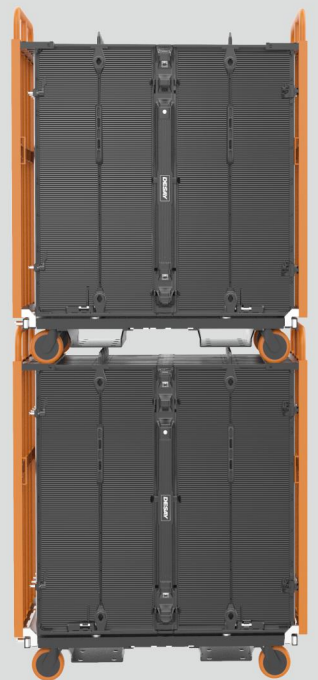
Hanging bar and dolly optional
Maximum hanging 15 panels

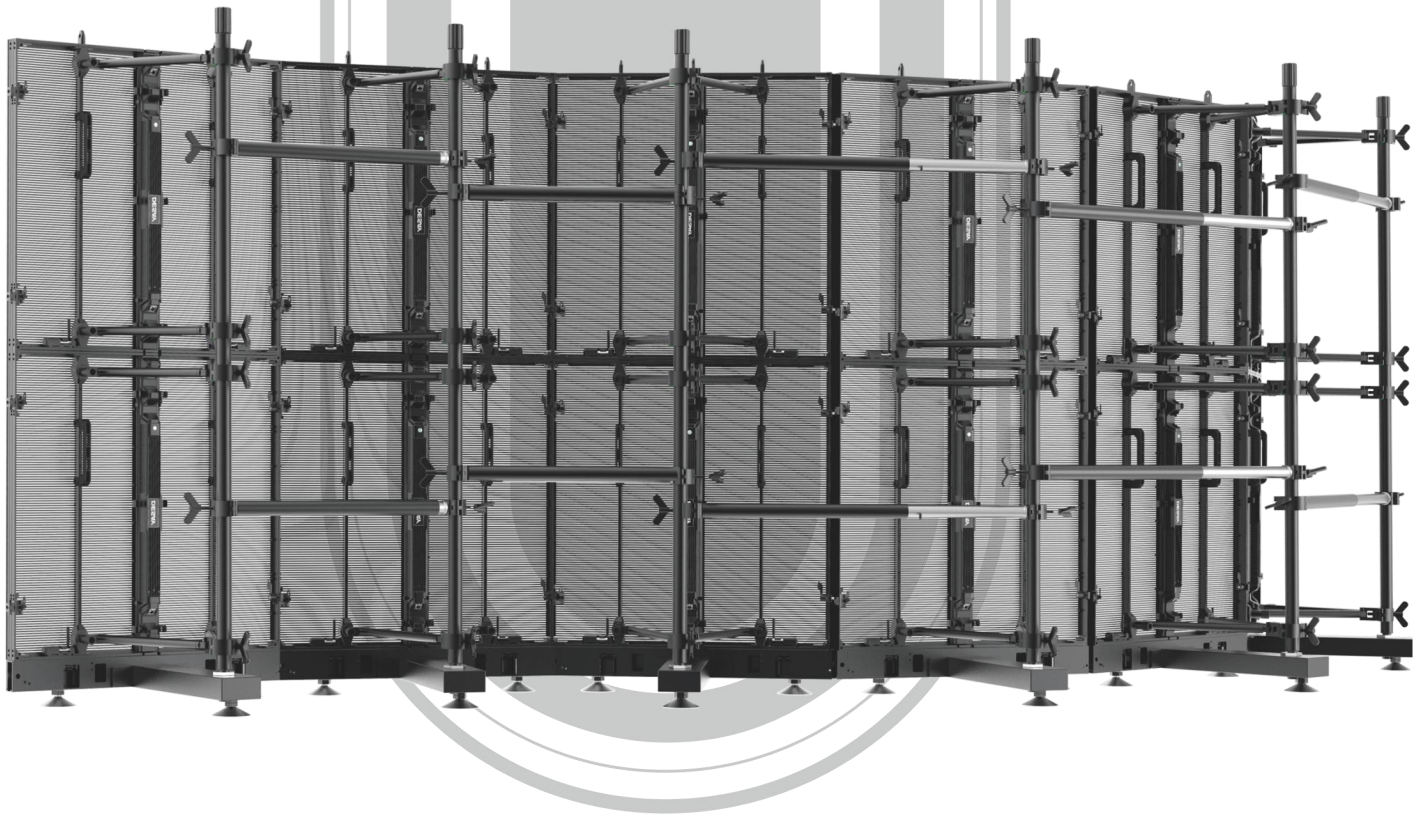
Hanging bars accessories:
1-in-1 size: 959*100*50mm



Dolly capacity: 1 for 8
The standard industry sized dolly fits perfectly into trucks, enabling double stacking
20ft container = 8 carts /64sqm LED system
40ft container = 34 carts /272sqm LED system

Dolly advantages:
Can be directly used as a box packaging, with dolly can be stacked up and down lifting, more convenient





Support flat and curve stacking
 Universal design for stacking bar and hanging bar
 Regular frame and windproof large back frame optional, suitable for a variety of applications

RB stacking accessories

Universal hanging and stacking bar specification:

- 1-in-1: 1000 *50 *100mm
- 2-in-1: 2000 *50* 100mm

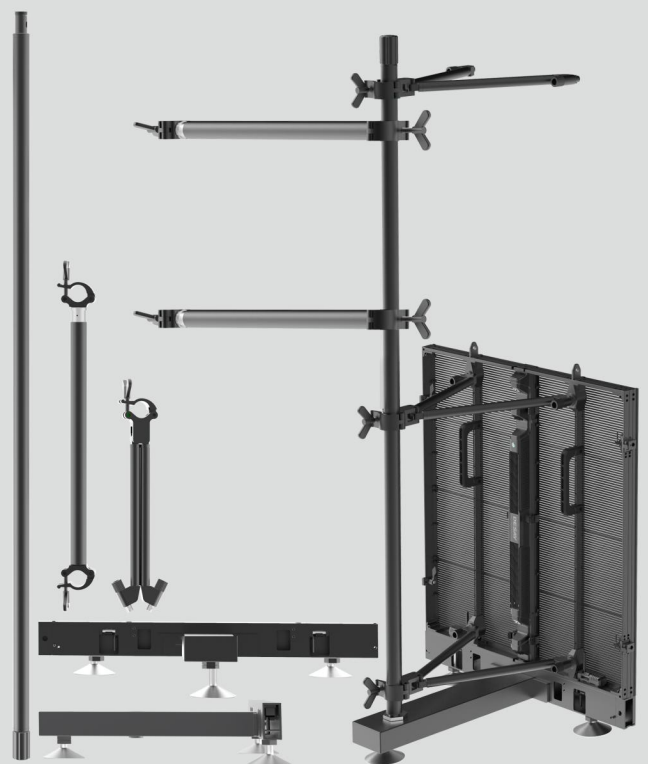
Back frame

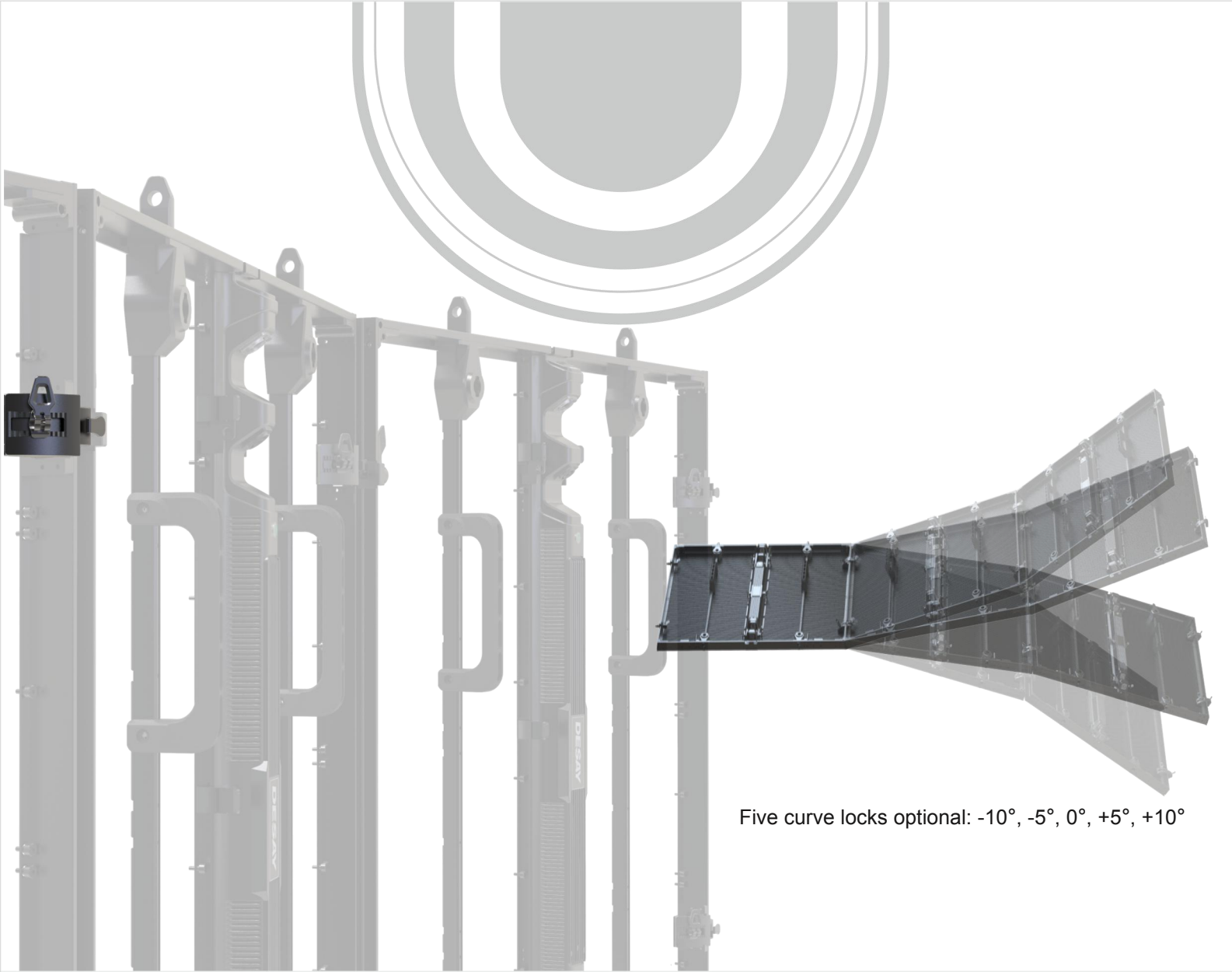
- 1-in-1: 1000 *300 *50mm
- 2-in-1: 2000*300 *50mm

Ground support bar:

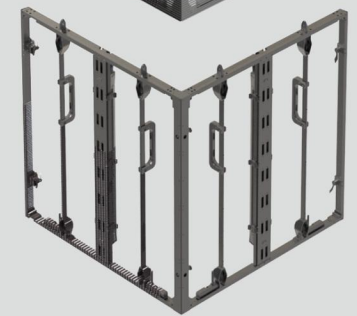
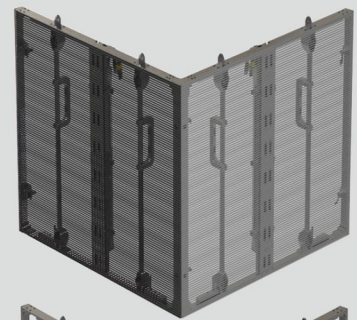
- 700 *50 *100mm

Back frame fast lock





Five curve locks optional: -10° , -5° , 0° , $+5^\circ$, $+10^\circ$



90 ° right angle splicing
 4-sided column splicing
 Flat screen&concave &convex can
 be combined with each other
 Convenient for a variety of stage effects



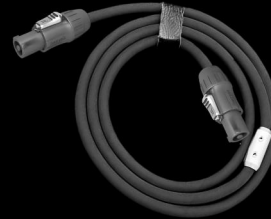
RB series flight case
Specifications: 6 in one case
1070*825*1250mm



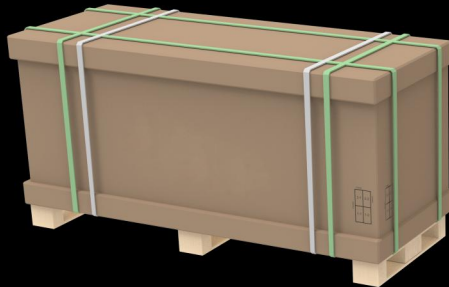
RB series dolly
Specifications: 12 in one dolly
2060*760*1181mm



Data cable:
Neutrick&Seetronics plug optional
Specifications:
Vertical cabling: 0.5m



Power cable:
Neutrick&Seetronics plug optional
Specifications:
Vertical cabling: 0.5m



Carton case packaging specifications: 6 in one case dimension:
1070*805*1200mm

Specifications

Parameter	Unit	RB3-7	RB7	RB8	RB10	RB15
Pixel pitch	mm	W:3.9H:7.8	W:7.8 H:7.8	W:8.3H:8.3	W:10.4 H:10.4	W:15.6 H:15.6
Brightness	nits	≥ 4000	≥5000	≥ 5000	≥5000	7500~8000
Pixel configuration	R/G/B	SMD 3 in 1				
Viewing angle-Horizontal (50% brightness)	deg.	140 (+70/-70)				
Viewing angle-Vertical (50% brightness)	deg.	140 (+70/-70)				
Recommended minimum viewing distance	m	4	7	8	10	15
Panel width	mm	1000				
Panel heigh	mm	1000				
Panel depth	mm	80				
Panel area	m ²	1				
Panel material		Aluminum				
Panel weight	Kg	16.5KG				
Ingress protection(front/back)	IP	65/54				
Pixel matrix per panel		256*128	128*128	120*120	96*96	64* 64
Brightness control		255				
Gray scale	bit	14				
Framerate	Hertz	50/60				
Display refreshrate	Hertz	3840				
Input voltage	VAC	100 ~ 240				
Input power frequency	Hertz	50 ~ 60				
Input power(Max.)	W/m ²	550±10%	550±10%	550±10%	550±10%	650±10%
Input power(Avg.)	W/m ²	192±10%	192±10%	192±10%	192±10%	227±10%
Operating temperature range	deg.C	- 15 ~ +55				
Life time(50% brightness)	Hours	100,000				
Transparency	%	50	60	60	62	65