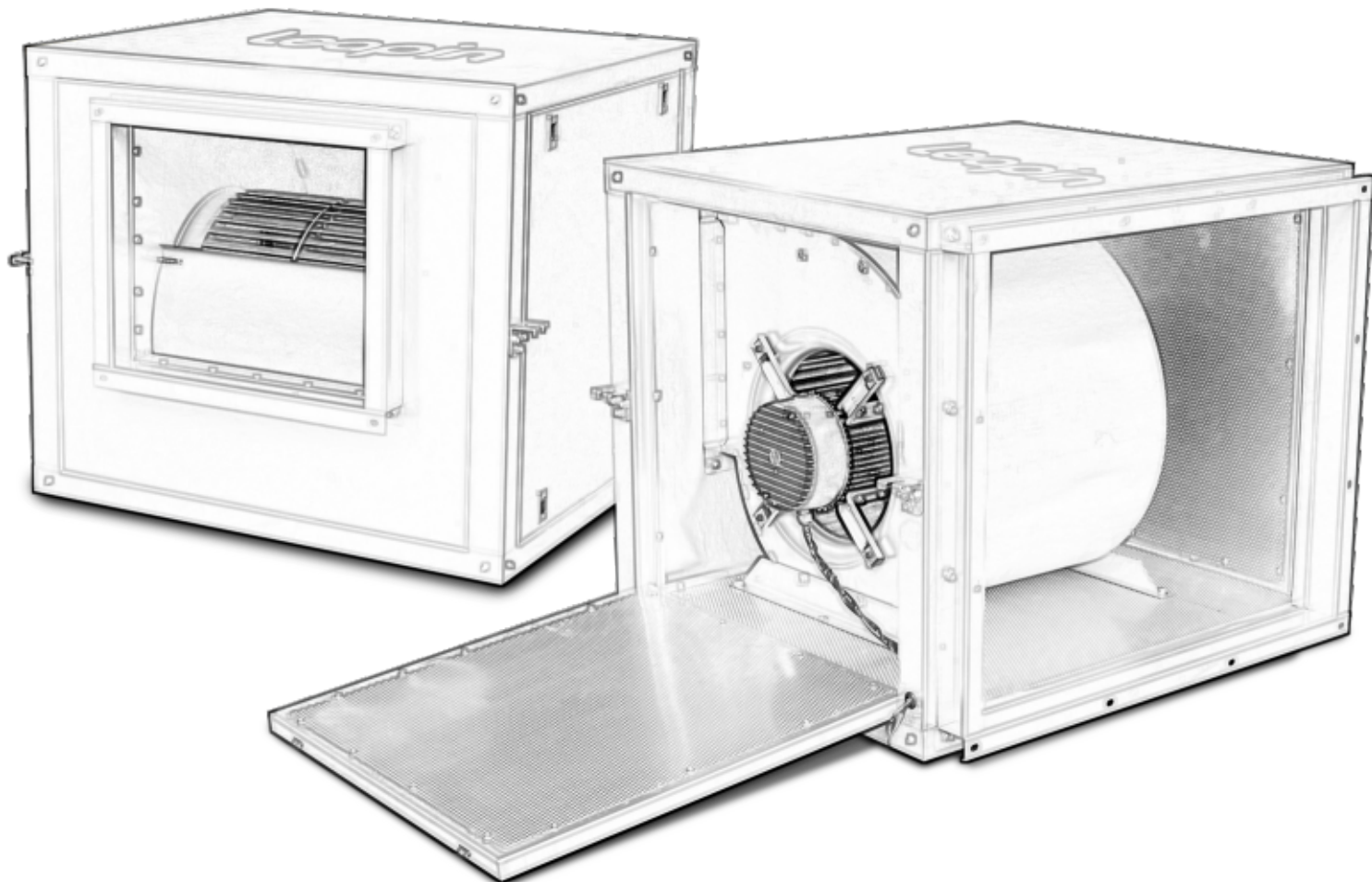


Leapin



Series Silent Fans **CDC-E**
PRODUCT CATALOGUE
AN INDUSTRY-LEADING FANS MANUFACTURER & VENTILATION
SYSTEM DESIGNER

GUANGDONG LEAPIN ENVIRONMENTAL TECHNOLOGY COMPANY..LTD

COMPANY PROFILE

MAIN PRODUCTS

- A** Environmental protection purification equipment
- B** Ventilation equipment
- C** Noise reduction equipment
- D** Ventilation valve



22+ Experience and technology accumulation

10+ More than mu of production base

1000+ The enterprise provides technical and service support

20+ Patent design

ABOUT US

Guangdong Green Goods Environmental Protection Technology Co., Ltd. is the industry's leading ventilation environmental protection equipment and intelligent ventilation. By virtue of the parent company's 22 years experience and technical product of Foshan Yuan Green Ventilation, it has provided technical and service support for thousands of enterprises across the country.

Since the introduction of lean production management concept, through the personnel structure, production organization, and organizational operation, and constantly increase research and development input, and at the same time the old work Art innovation, green technology into a new year. From production efficiency, product quality and production. The pursuit of excellence in multiple dimensions such as product performance, so that the production and R & D system can quickly adapt to the use of Household needs.

Focus

High quality

Innovation

In the future, we will continue to increase research and development input, provide more and more comprehensive environmental protection ventilation, Provide solid and reliable environmental ventilation solutions for various industries to create a global environmental protection net The technology industry chain.

VISION

We are committed to bringing the truly perfect, environmentally friendly intelligent ventilation system to the country, providing diversified products, building a clean, green, sustainable, suitable for everyone's life environment, restore the natural breeze.

- A** We continue to invest in environmental protection technology, every detail is strictly controlled, never stop in quality;
- B** We from the R & D, production, transportation, installation of each link grinding, continued to upgrade to maintain the industry's top service
- C** We build outlets across the country, and strive to provide the most perfect solution to thousands of households, and access to the ultimate service experience;

IDEA

The business philosophy of "Quality and Virtue, Dedication and Loyalty, Lean Innovation, Cooperation and Win-win, Creating Green Products for One Hundred Years."

QUALIFICATION CERTIFICATION

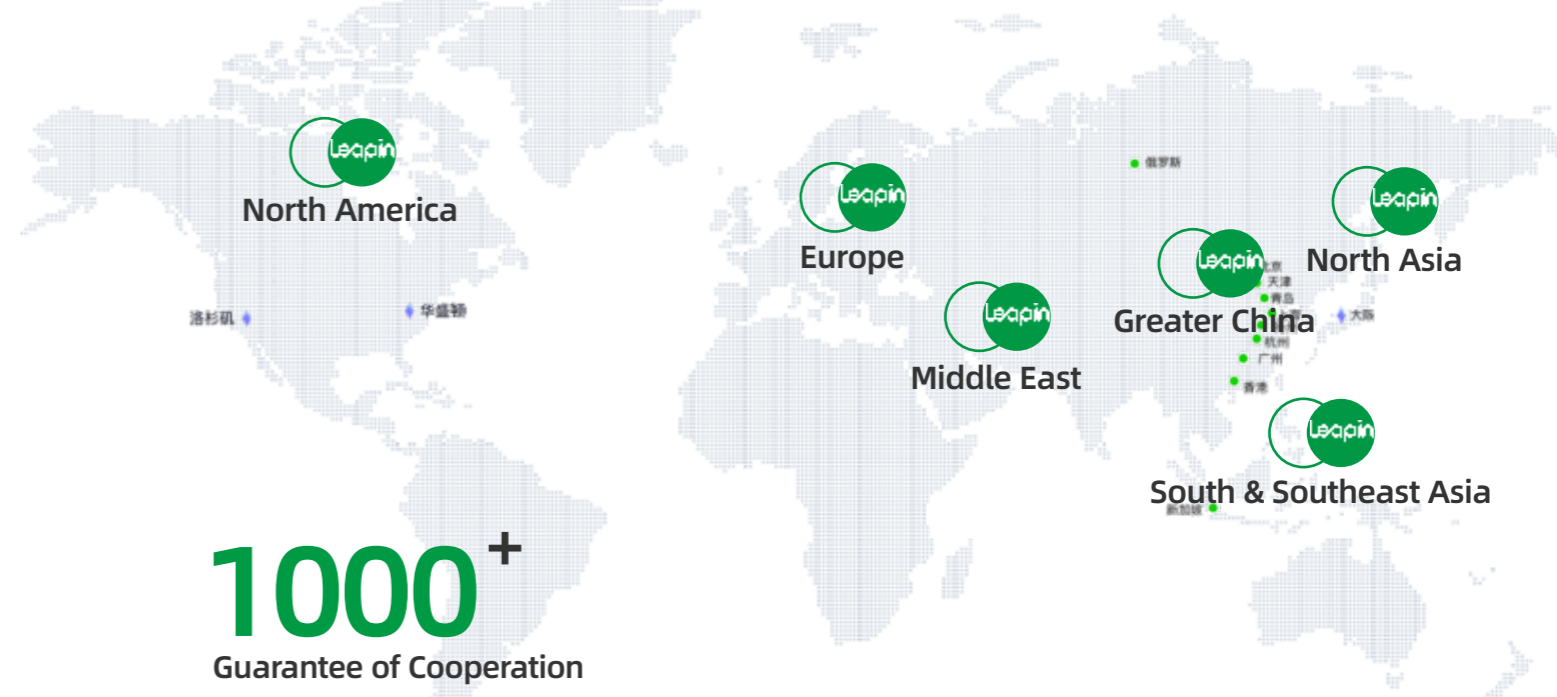


- A) High -tech certification enterprise
- B) China Environmental Protection Product Certification
- C) Guangdong Famous Brand Products
- D) Quality Management System Certification
- E) Keeping contract with a credit enterprise
- F) Products have been tested by various strict testing



GLOBAL SERVICE

Based in Foshan, radiate the world



1000⁺

Guarantee of Cooperation

10,000,000⁺

Amount of cooperation

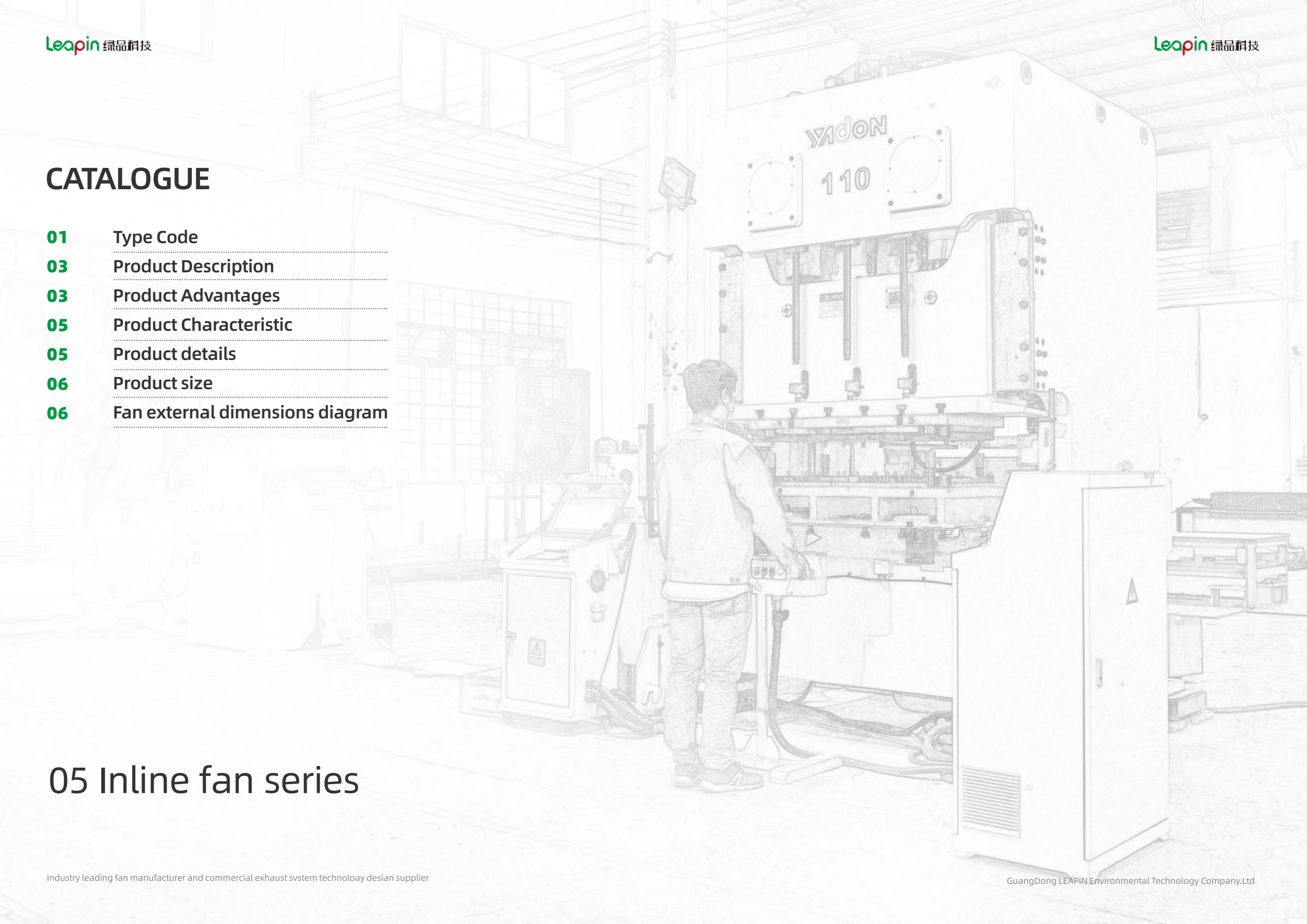
We build networks across the country and strive to provide the most complete solutions. Provide thousands of households, and get the ultimate service experience.



CATALOGUE

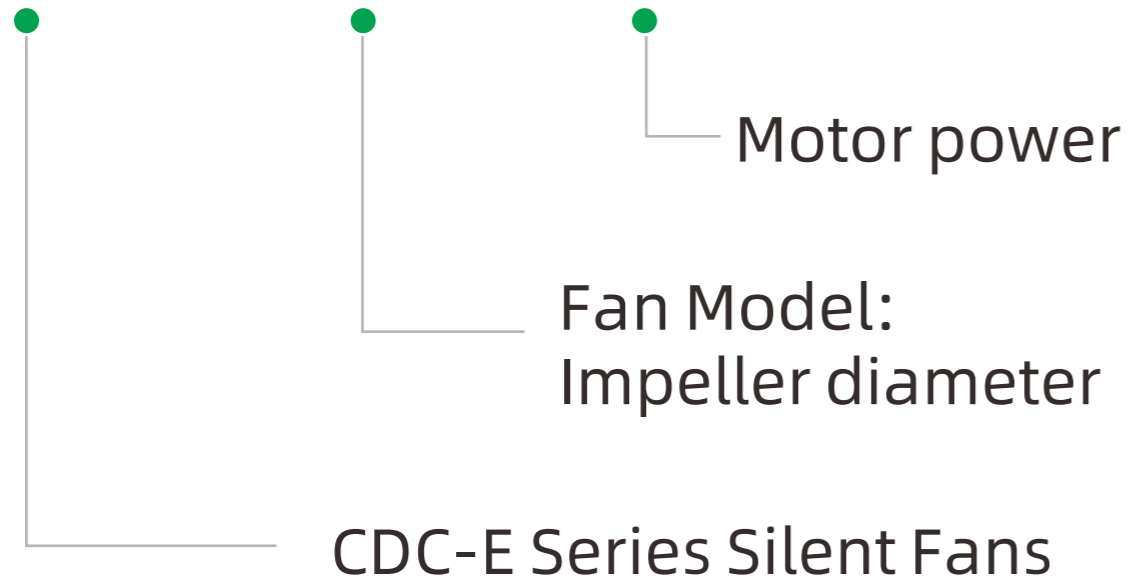
- 01 Type Code
- 03 Product Description
- 03 Product Advantages
- 05 Product Characteristic
- 05 Product details
- 06 Product size
- 06 Fan external dimensions diagram

05 Inline fan series



Type Code

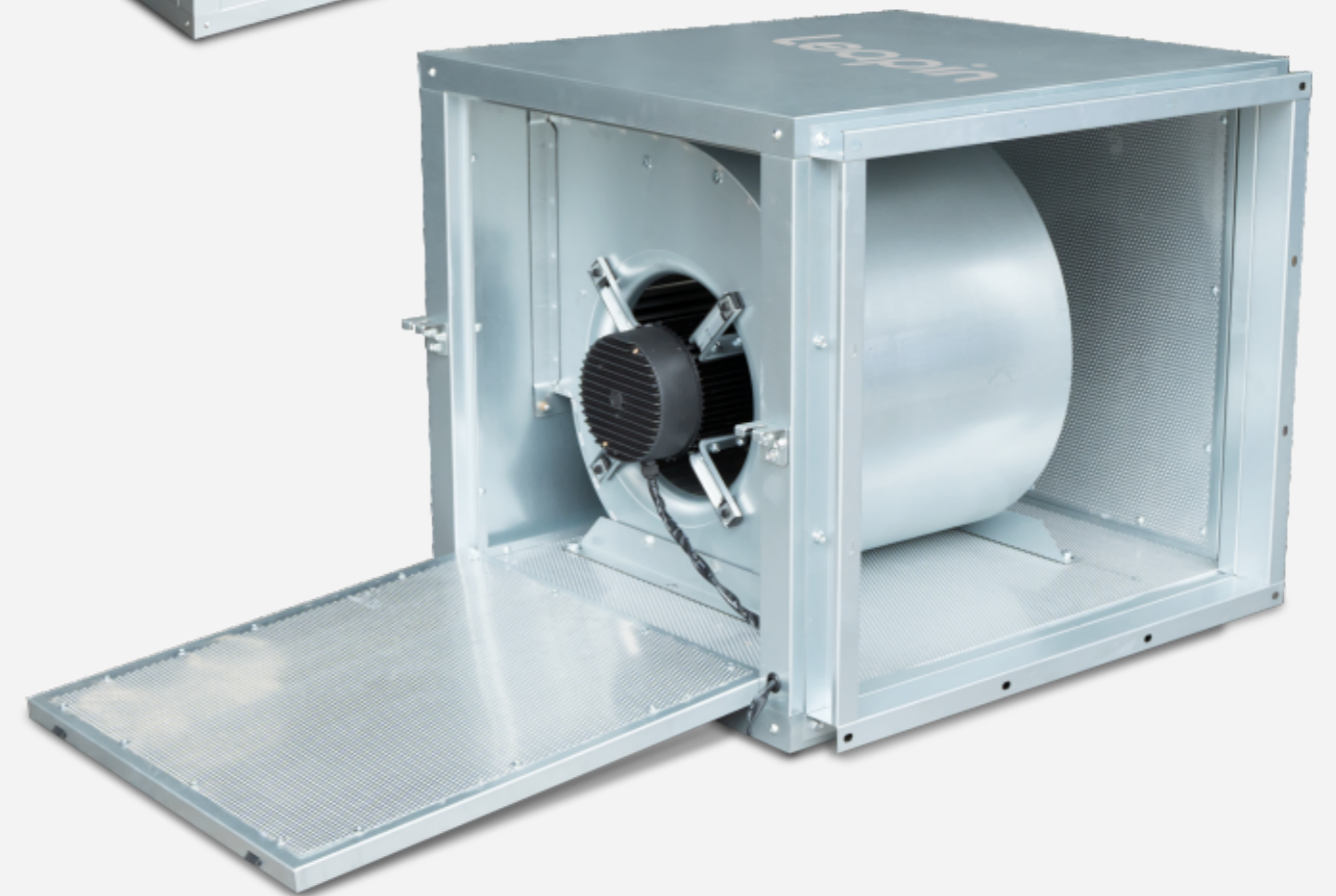
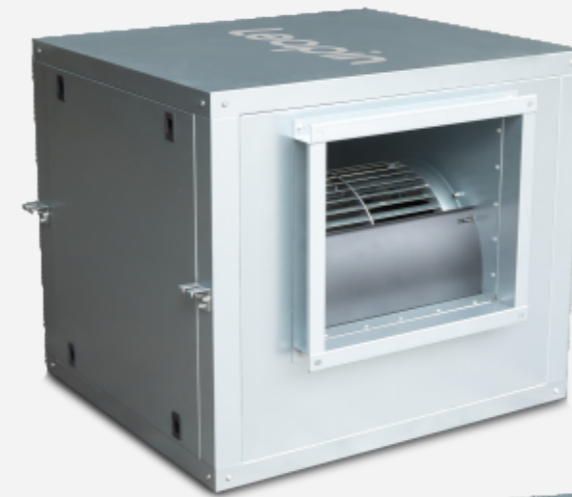
CDC - E - 200 - 0.25



CDC-E Series Silent Fans

Product Advantages:

1. High efficiency, low noise
2. Real-time speed regulation
3. Small size and simple maintenance



Product Description:

CDC-E series silent fan adopts more advanced EC technology motor, integrated control system to achieve stepless speed regulation, and is equipped with double air inlet forward inclined impeller and efficient silencing outer box. It has the characteristics of high efficiency, low noise, excellent performance, compact structure and easy installation.

CDC-E series silent fans come in four sizes: **200,230,315, and 335**
Airflow: 3000-7500 m³/h, Total pressure: 315-630 Pa.

Product Advantages:

• 1. High Efficiency

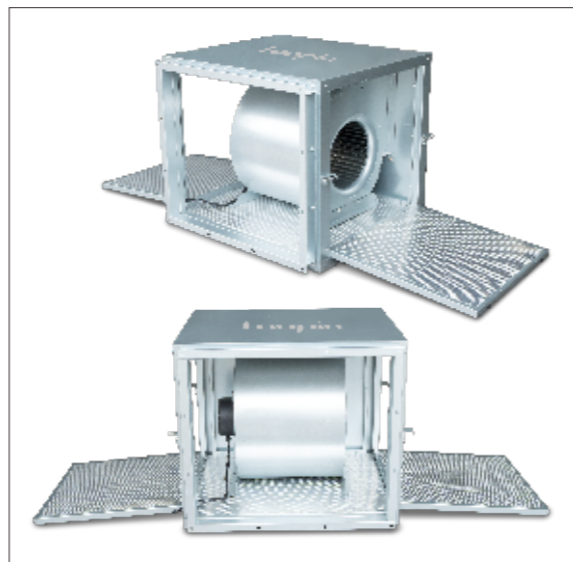
Compared to traditional motors, EC motors can achieve an efficiency of over 90%, saving up to 50% in energy consumption, thereby reducing the operating costs for users.

90% EC motors efficiency
50% energy consumption



• 2. Compact Size

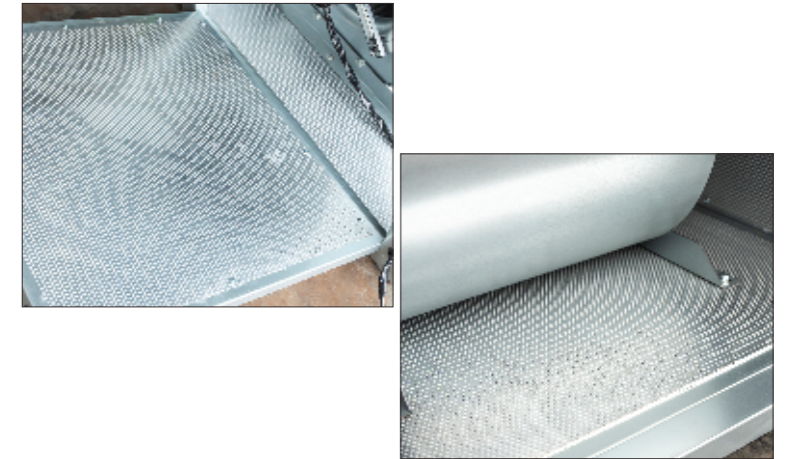
Since EC motors no longer require commutators and carbon brushes, the motor size is significantly reduced, resulting in a more compact fan structure. This minimizes installation space, making it suitable for applications where space is limited.



Product Advantages:

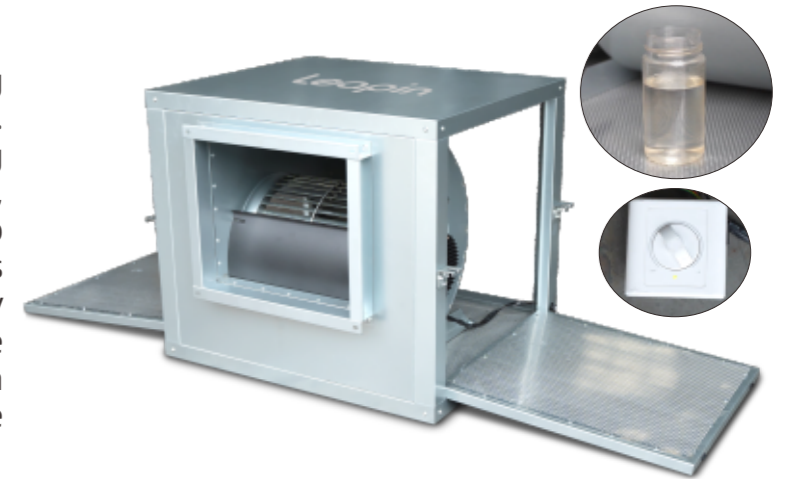
• 3. Low Noise

The blades of the LT-FC series fans are relatively narrow and have a curved shape, resulting in a smoother airflow during operation and, consequently, lower noise levels. The impeller's static and dynamic balance meets the G2.5 requirements outlined in the ISO 1940 standard. Additionally, the cabinet panels are embedded with 50mm sound-absorbing cotton to further dampen the noise generated by the fan.



• 4. Real-time Speed Control

All components are processed using high-quality steel materials. Manufacturing tolerances, welding quality, product corrosion resistance, and other aspects strictly adhere to standards. Additionally, the fan is equipped with high-quality bearings and European-style pulleys, ensuring the long-term smooth and reliable operation of the fan.



• 5. Easy Maintenance

The cabinet is flat, assembled with panels and frames, and all panels are detachable for convenient maintenance.



• 6. Durable and Aesthetic

The entire outer casing of the unit is treated with high-quality galvanized metal, providing resistance to moisture, corrosion, rust, and fire, ensuring both durability and an attractive appearance.

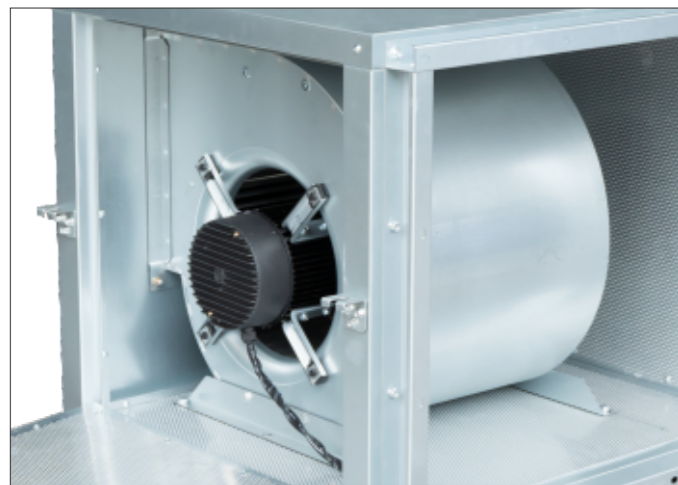
Product Characteristic:

| | |
|------------------------------|--|
| Model | 200、230、315、335 |
| Airflow(m ³ /h): | 3000-7500 |
| Maximum static pressure(Pa): | 315-630 |
| Impeller | Double air inlet forward inclined impeller |
| Transmission mode: | Motor direct drive |
| Overall material: | Highquality steel materials |

Product details:

The EC motor, through its integrated control system, achieves stepless speed regulation

Since EC motors no longer require commutators and carbon brushes, the motor size is significantly reduced,



The box structure reduces noise, sound-absorbing materials further decrease noise

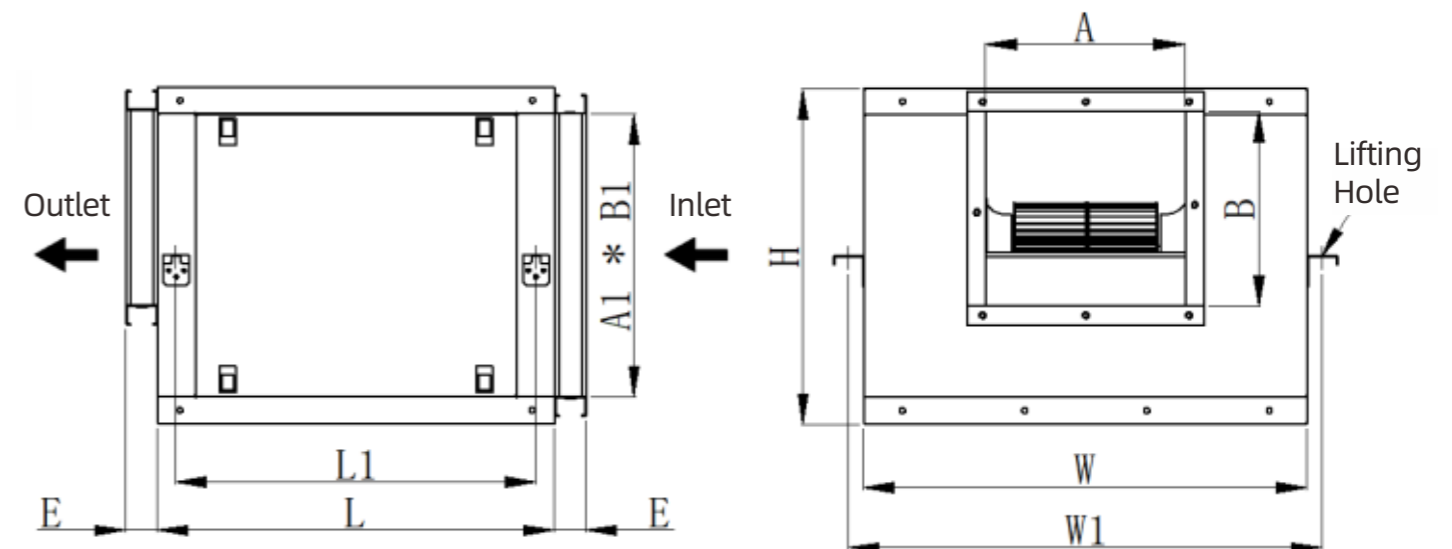
EC motors can achieve an efficiency of over 90%, saving up to 50%

Product size:

| Type | Motor power (kw) | Power parameters (50Hz) | Air volume (m ³ /h) | Total pressure (Pa) | Dimensions LxWxH (mm) | Outlet Dimensions/Inlet Dimensions (mm) | Total weight (kg) |
|-----------|------------------|-------------------------|--------------------------------|---------------------|-----------------------|---|-------------------|
| CDC-E-200 | 0.25kW | 220V | 3000 | 315 | 550*620*450 | 232x223 / 450x370 | 24 |
| CDC-E-230 | 0.55kW | 220V | 4500 | 415 | 600*670*500 | 287x256 / 500x420 | 34 |
| CDC-E-315 | 0.7kW | 220V | 6000 | 550 | 680*720*580 | 270x291 / 550x500 | 42 |
| CDC-E-335 | 1.0kW | 220V | 7500 | 630 | 750*820*650 | 395x341 / 600x570 | 50 |

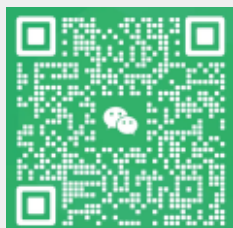
| Dimensions of CDC-E Series Fans | | | | | | | | | | | |
|---------------------------------|----------------------|-----|-----|-------------------------|-----|----|--------------|-------------------|-----|------------------|-----|
| Type | Enclosure dimensions | | | Installation dimensions | | | | Outlet dimensions | | Inlet dimensions | |
| | L | W | H | L1 | W1 | E | Lifting hole | A | B | A1 | B1 |
| CDC-E-200 | 450 | 550 | 450 | 400 | 590 | 50 | 4-φ12*23 | 232 | 223 | 450 | 370 |
| CDC-E-230 | 500 | 600 | 500 | 450 | 640 | 50 | 4-φ12*23 | 287 | 256 | 500 | 420 |
| CDC-E-315 | 580 | 650 | 580 | 530 | 690 | 50 | 4-φ12*23 | 270 | 291 | 550 | 500 |
| CDC-E-335 | 650 | 750 | 650 | 600 | 790 | 50 | 4-φ12*23 | 395 | 341 | 650 | 570 |

Fan external dimensions diagram





WhatsApp



Wechat

CONTACT US

Tel : +86 18316499216

Alibaba: [gdlvpin.en.alibaba.com](https://www.alibaba.com)

Email : willxie@leapintech.com

Company Address : No. 5 Chuangye Road, The third industrial district, Xiabai, Luocun, Shishan town, Foshan, China