

Leapin 绿品科技



PRODUCT CATALOGUE

**AN INDUSTRY-LEADING
Fan manufacturer and commercial exhaust
system technology design supplier**

行业领先风机制造商及商用排风技术供应商



GUANGDONG LEAPIN ENVIRONMENTAL TECHNOLOGY COMPANY..LTD

广东绿品环保科技有限公司

COMPANY PROFILE

MAIN PRODUCTS

- A** Environmental protection purification equipment
- B** Ventilation equipment
- C** Noise reduction equipment
- D** Ventilation valve



26+ Experience and technology accumulation

10+ More than mu of production base

1000+ The enterprise provides technical and service support

20+ Patent design

ABOUT US

Guangdong Green Goods Environmental Protection Technology Co., Ltd. is the industry's leading ventilation environmental protection equipment and intelligent ventilation. By virtue of the parent company's 26 years experience and technical product of Foshan Yuan Green Ventilation, it has provided technical and service support for thousands of enterprises across the country.

Since the introduction of lean production management concept, through the personnel structure, production organization, and organizational operation, and constantly increase research and development input, and at the same time the old work Art innovation, green technology into a new year. From production efficiency, product quality and production. The pursuit of excellence in multiple dimensions such as product performance, so that the production and R & D system can quickly adapt to the use of Household needs.

Focus

High quality

Innovation

In the future, we will continue to increase research and development input, provide more and more comprehensive environmental protection ventilation, Provide solid and reliable environmental ventilation solutions for various industries to create a global environmental protection net. The technology industry chain.

VISION

We are committed to bringing the truly perfect, environmentally friendly intelligent ventilation system to the country, providing diversified products, building a clean, green, sustainable, suitable for everyone's life environment, restore the natural breeze.

- A** We continue to invest in environmental protection technology, every detail is strictly controlled, never stop in quality;
- B** We from the R & D, production, transportation, installation of each link grinding, continued to upgrade to maintain the industry's top service
- C** We build outlets across the country, and strive to provide the most perfect solution to thousands of households, and access to the ultimate service experience;

IDEA

The business philosophy of "Quality and Virtue, Dedication and Loyalty, Lean Innovation, Cooperation and Win-win, Creating Green Products for One Hundred Years."

QUALIFICATION CERTIFICATION

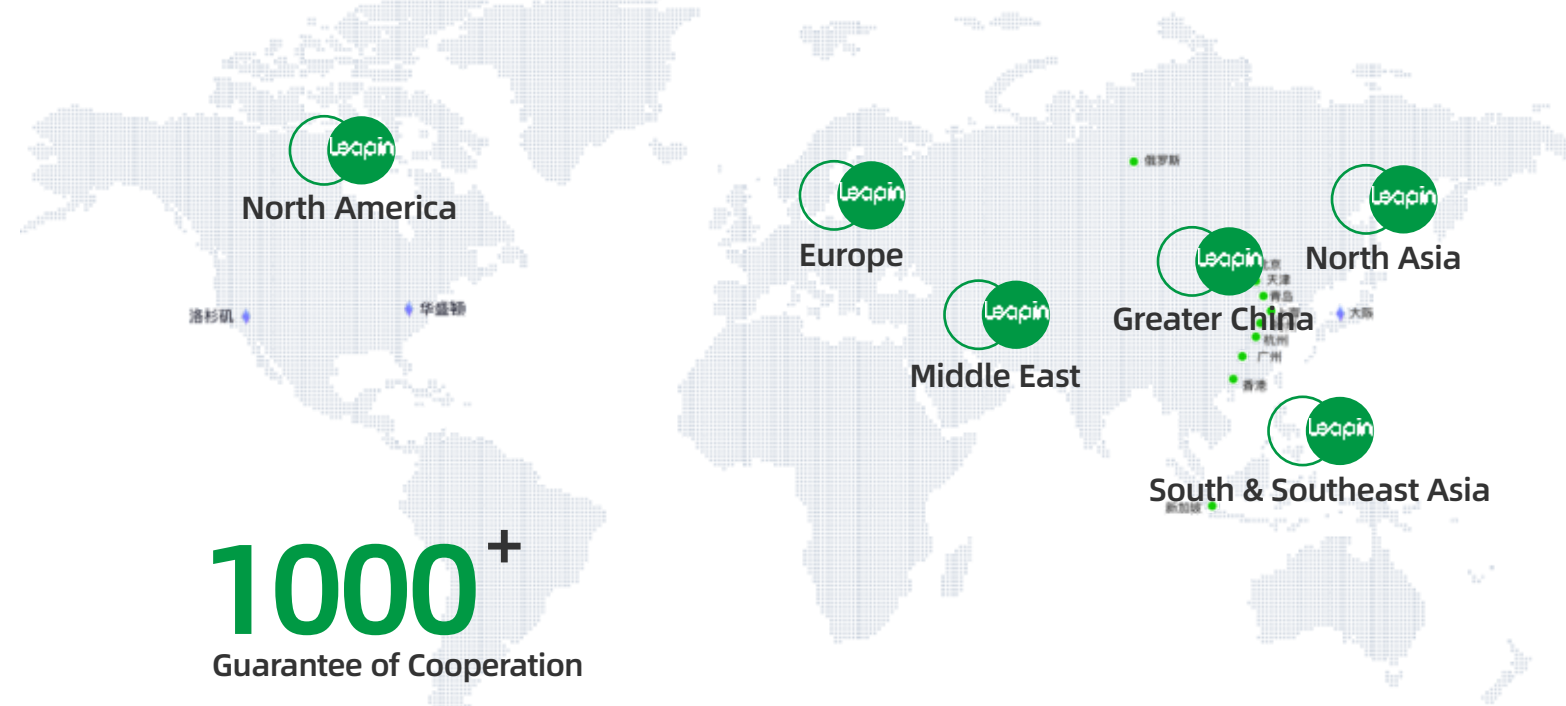


- A) High -tech certification enterprise
- B) China Environmental Protection Product Certification
- C) Guangdong Famous Brand Products
- D) Quality Management System Certification
- E) Keeping contract with a credit enterprise
- F) Products have been tested by various strict testing



GLOBAL SERVICE

Based in Foshan, radiate the world



1000⁺

Guarantee of Cooperation

10,000,000⁺

Amount of cooperation

We build networks across the country and strive to provide the most complete solutions. Provide thousands of households, and get the ultimate service experience.



CONTENTS

01 Centrifugal series
离心系列

02 Axial fan series
轴流系列

03 Accessories
配件系列

04 Cabinet fan series
柜式系列

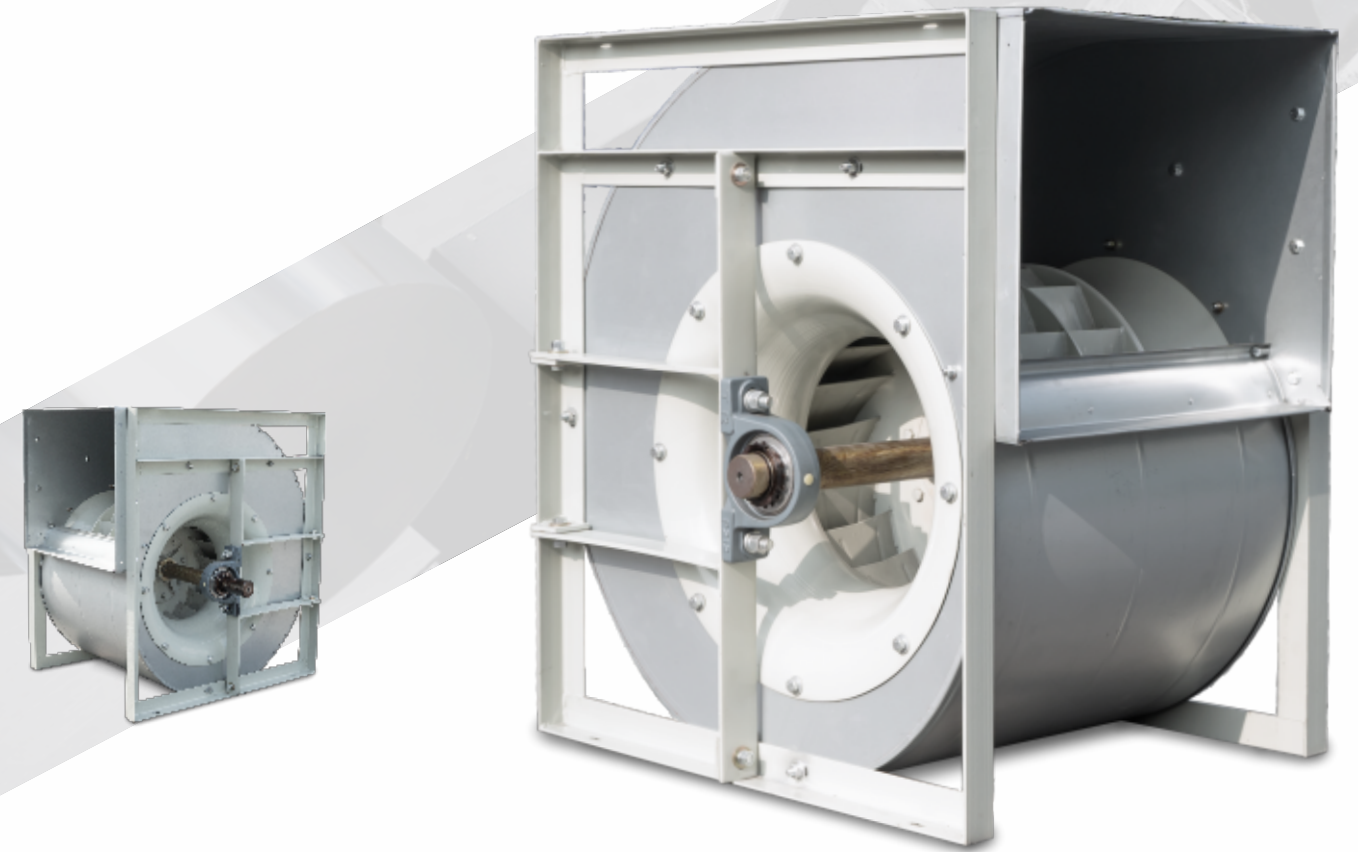
05 Inline fan series
内置风机系列

06 Industrial fan series
工业风机系列



LT-BC(S)

Centrifugal series



01 Centrifugal series

离心系列

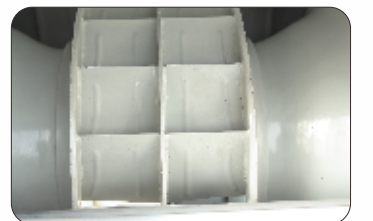
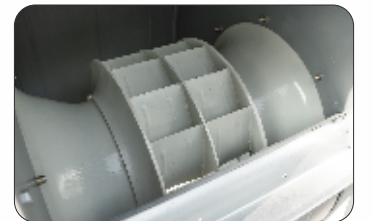
AN INDUSTRY-LEADING FANS MANUFACTURER & VENTILATION SYSTEM DESIGNER

Product Advantages:

1. High static pressure
2. High efficiency
3. Wide product range, from 315mm-1250mm

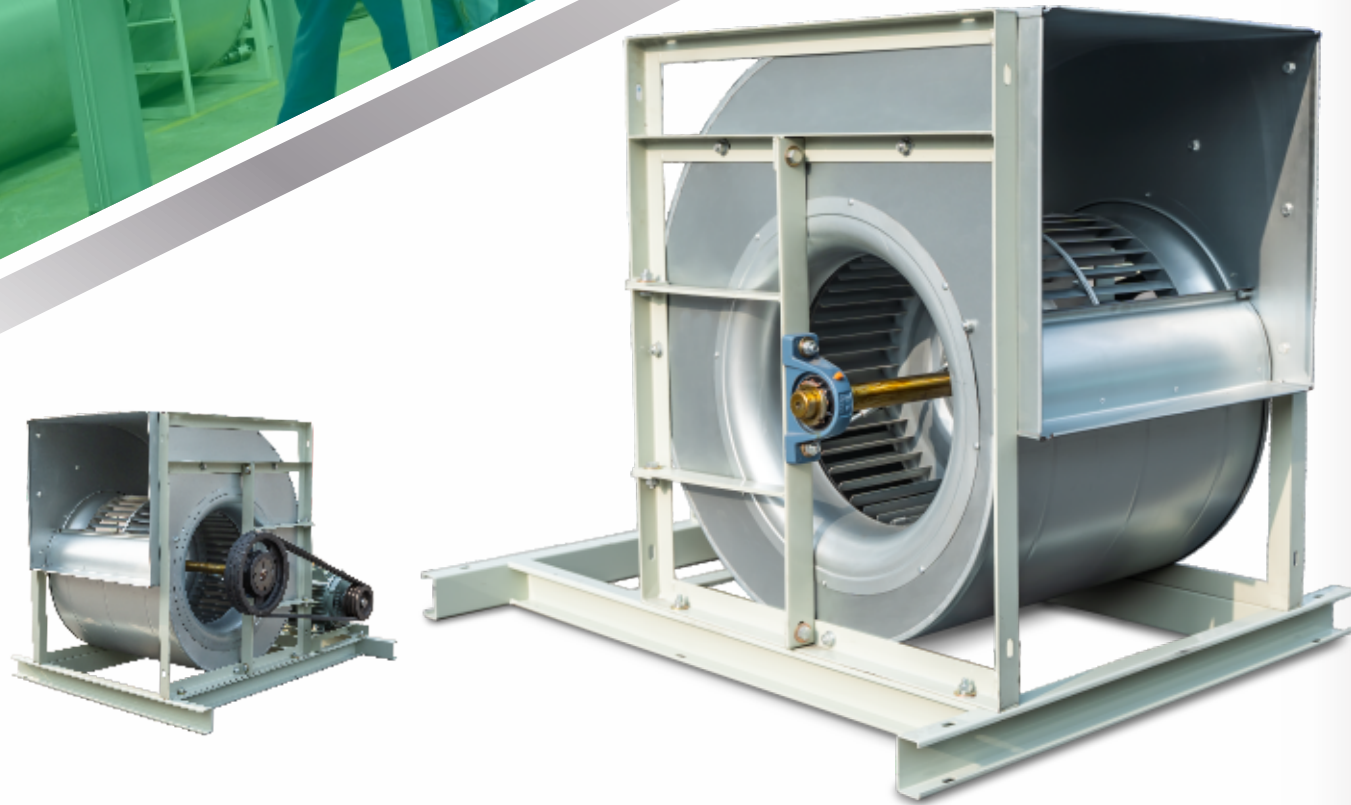
Product Characteristic:

Model:	315,355,400,450,500,560,630,710,800,900,1000
Airflow(m ³ /h):	1500-90000
Total pressure(Pa):	300-2900
Impeller:	Backward inclined centrifugal impeller
Bearing:	Insert bearing with housing(UKP)
Transmission mode:	Belt drive
Pulley:	European-style pulley(SP)
Overall material:	Galvanized sheet



LT-FC(S)

Centrifugal series



Product Advantages:

- 1. High volume, high pressure
- 2. Low noise
- 3. Efficiency rate reaches 74%

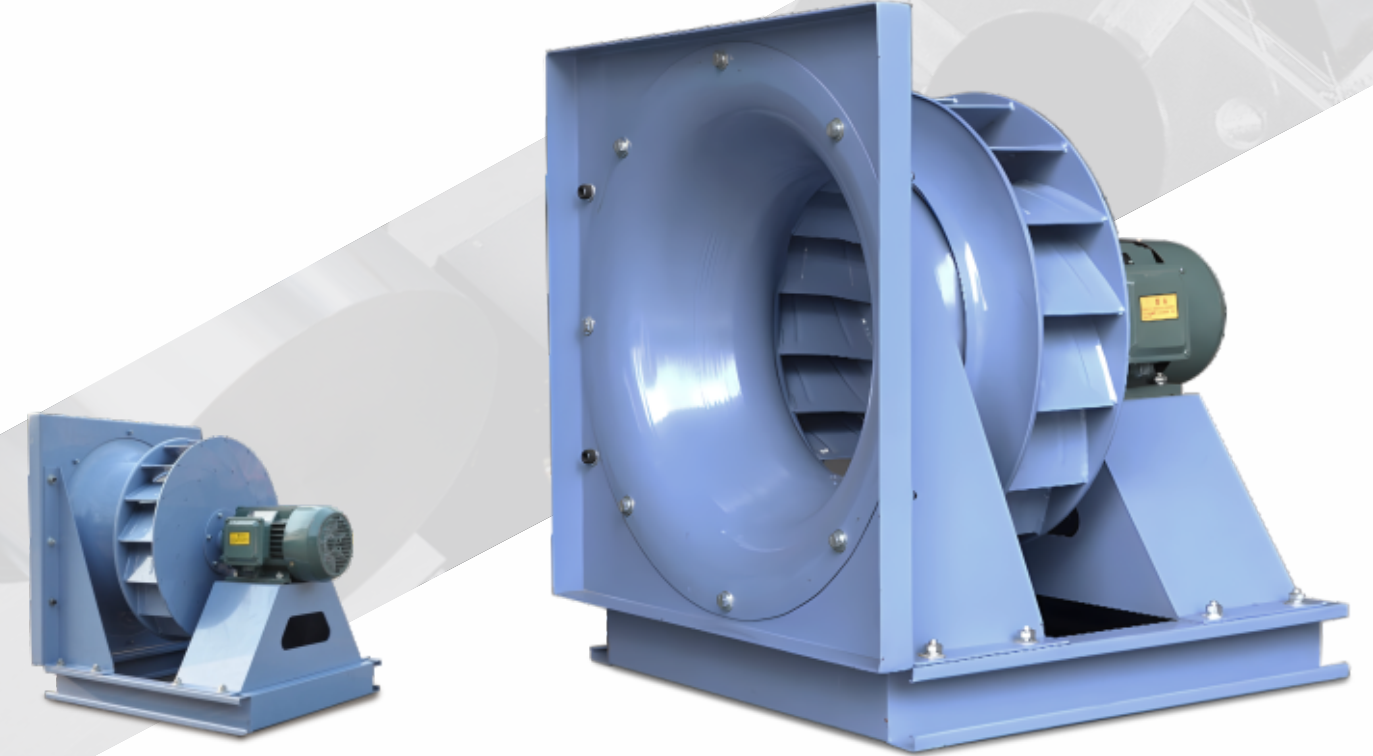


Product Characteristic:

Model:	250,280,315,355,400,450,500,560,630,710,800,900
Airflow(m ³ /h):	1400-94000
Total pressure(Pa):	200-1700
Impeller:	Forward curved centrifugal impeller
Bearing:	Insert bearing with housing(UKP)
Transmission mode:	Belt drive
Pulley:	European-style pulley(SP)
Overall material:	Galvanized sheet

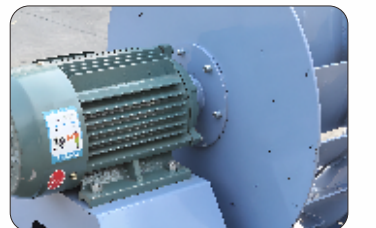
PF

Centrifugal series



Product Advantages:

- 1. High static pressure
- 2. High efficiency rate, low power consumption
- 3. Wide product range, suitable for both 50Hz/60Hz motor



Product Characteristic:

Model:	315,355,400,450,500,560,630,710,800,900,1000
Airflow(m ³ /h):	60Hz:1100-45400 50Hz:900-42200
Maximum static pressure(Pa):	60Hz:370-2500 50Hz:260-1750
Impeller:	Backward inclined centrifugal impeller
Transmission mode:	Motor direct drive
Overall material:	Carbon steel coating

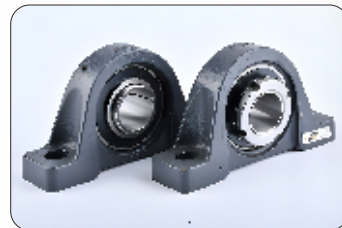
FCS-E

Centrifugal series



Product Advantages:

- 1. High pressure smoke exhaust fan
- 2. Belt driven type, multiple speeds
- 3. Long product life



Product Characteristic:

Model:	500,560,630,710,800
Airflow(m ³ /h):	6000-43000
Total pressure(Pa):	600-1600
Impeller:	Forward curved centrifugal impeller
Bearing:	Insert bearing with housing(UKP)
Transmission mode:	Belt drive
Overall material:	Carbon steel coating

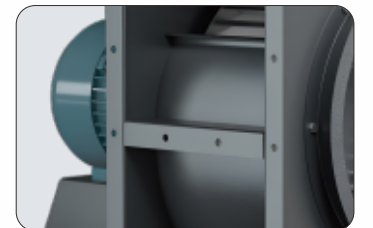
FCS-A

Centrifugal series



Product Advantages:

- 1. High airflow, high pressure smoke exhaust fan
- 2. Drive drive, 2/4/6 pole speed.
- 3. Convenient maintenance designed



Product Characteristic:

Model:	250,280,315,355,400,450,500,560,630
Airflow(m ³ /h):	1500-26000
Total pressure(Pa):	300-2000
Impeller:	Forward curved centrifugal impeller
Transmission mode:	Motor direct drive
Overall material:	Carbon steel coating



ABF

Axial fan series



02 Axial fan series

轴流系列

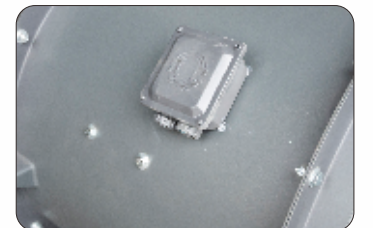
AN INDUSTRY-LEADING FANS MANUFACTURER & VENTILATION SYSTEM DESIGNER

Product Advantages:

1. High airflow, medium pressure
2. Adjustable blade angle
3. High efficiency

Product Characteristic:

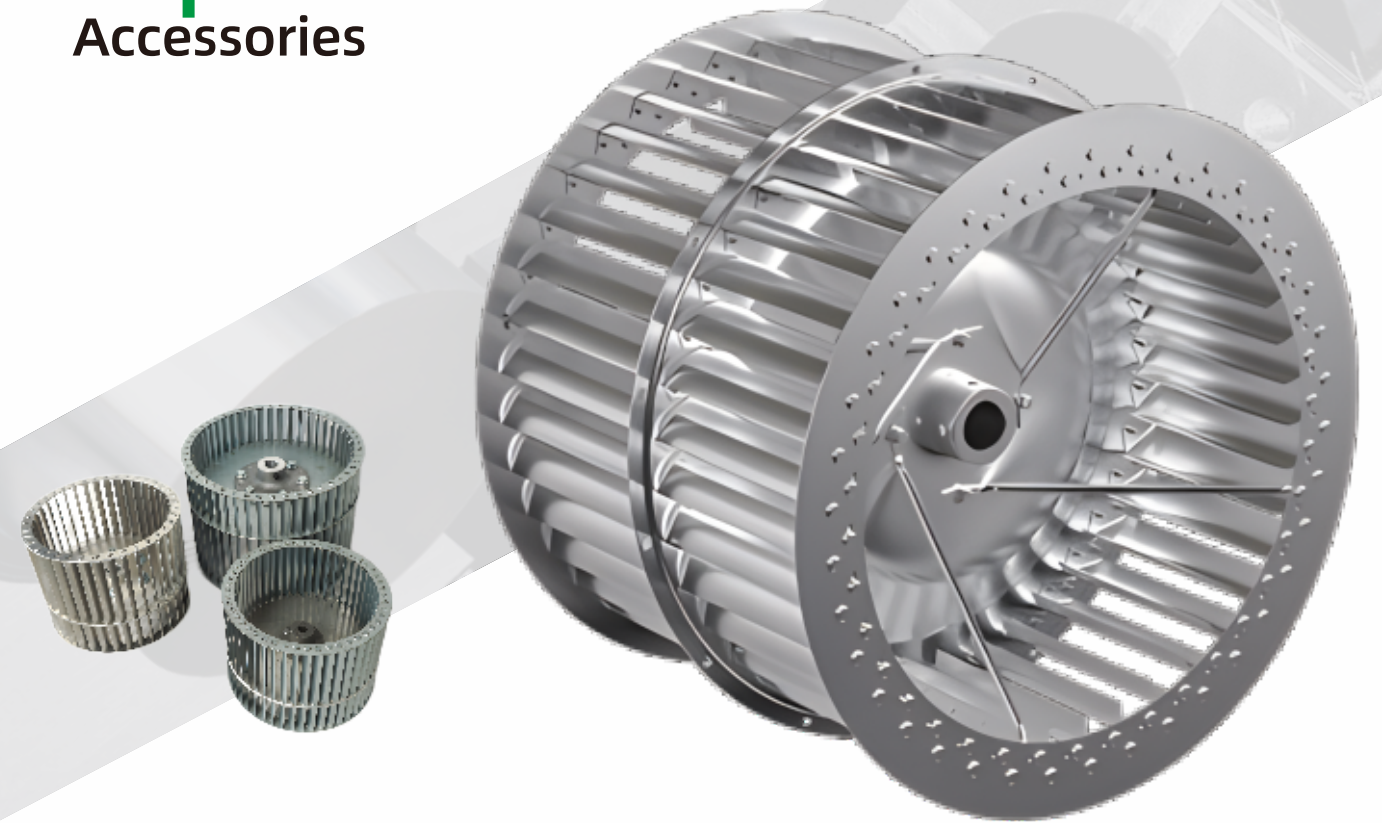
Model:	450,500,560,630,710,800,900,1000,1120,1250
Airflow(m ³ /h):	6600-88000
Total pressure(Pa):	240-1000
Impeller:	Aluminum alloy impeller
Transmission mode:	Motor direct drive
Overall material:	Carbon steel coating





Forward curved impeller

Accessories



03 Accessories

配件系列

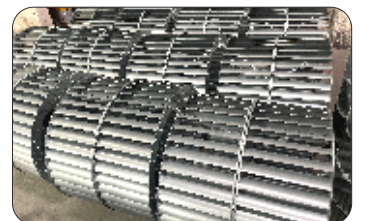
AN INDUSTRY-LEADING FANS MANUFACTURER & VENTILATION SYSTEM DESIGNER

Product Advantages:

1. Self developed impeller
2. Automative assembling process
3. Suitable for both ventilation and exhaust system

Product Characteristic:

Model:	250,280,315,355,400,450,500, 560,630,710,800,850,900,1000
Standard shaft hole diameter(mm):	25,30,40,50,60,65
Impeller material:	Galvanized sheet
Shaft disk material:	Carbon steel blackening
Fastening method:	Spin forming



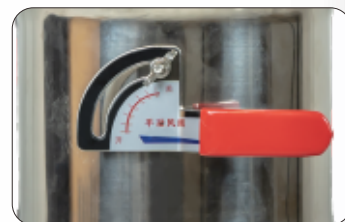
Stainless Steel!

Accessories



Product Advantages:

- 1. Excellent thickened material
- 2. Exquisite appearance
- 3. Stable and reliable



Product Characteristic:

Model:	RVCD
Diameter(mm):	50,63,75,80,100,120,150,200,250,300
Material	Stainless Steel 201
Regulator:	Motorized actuator、Manual handle

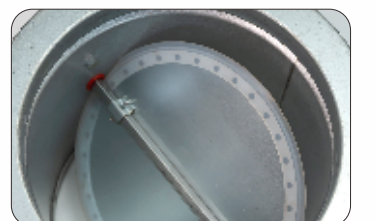
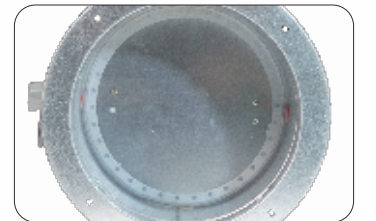
Galvanised steel

Accessories



Product Advantages:

- 1. Excellent thickened material
- 2. Exquisite appearance
- 3. Stable and reliable



Product Characteristic:

Model:	RVCD
Diameter(mm):	50,63,75,80,100,120,150,200,250,300
Material	Galvanized Steel
Regulator:	Motorized actuator、Manual handle

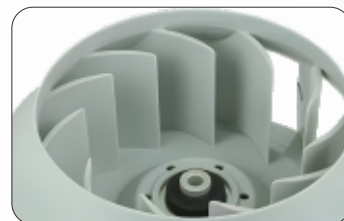
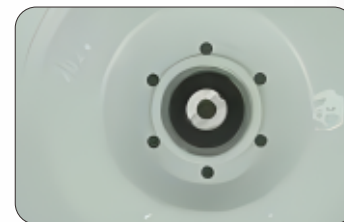
Backward plate impeller

Accessories



Product Advantages:

- 1. High pressure, high efficiency designed
- 2. Automatic robotic welding
- 3. Low power consumption



Product Characteristic:

Model: 315,355,400,420,450,500,560,630,710,800,850,900,1000,1150,1250

Standard shaft hole diameter(mm): 35,40,45,55,60,65,75,85,105

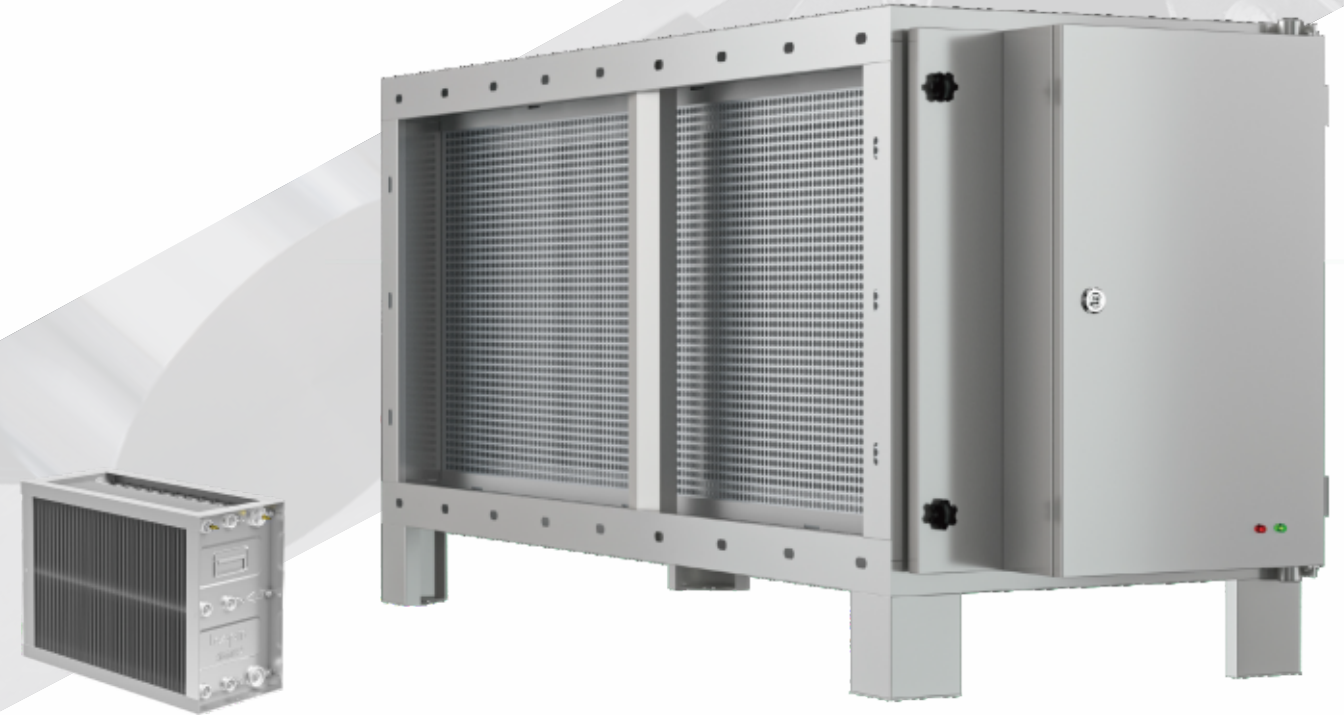
Impeller material: Carbon steel coating

Shaft disk material: Carbon steel blackening

Fastening method: Welding

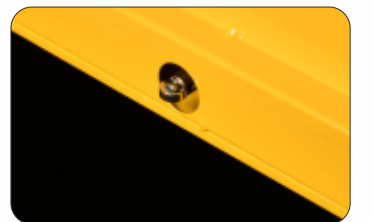
Electrostatic Air Purifier Filter

Accessories



Product Advantages:

- 1. Electric Field Design of Full Coverage Straight Plate
- 2. Can be connected to tilt oil spill box
- 3. Double safety electric control box



Product Characteristic:

Processing Efficiency: 85%、92%、95%

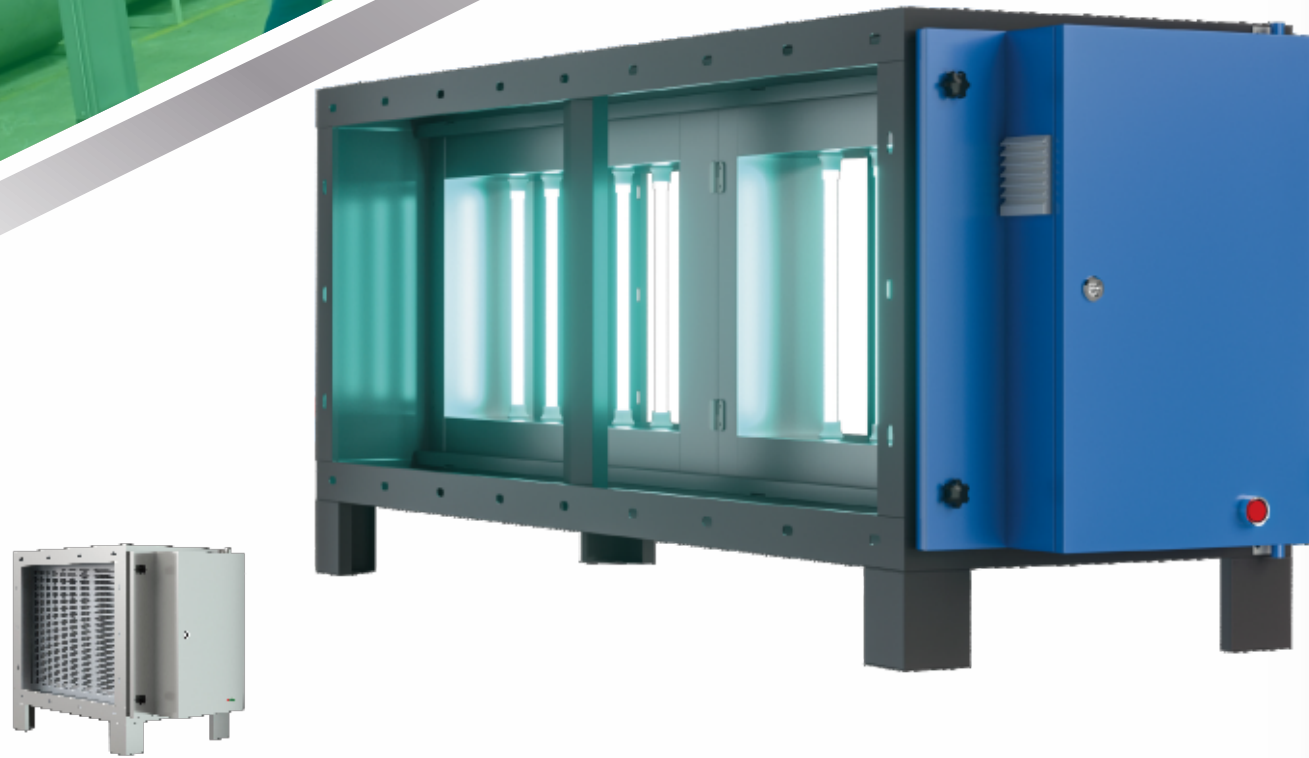
Rated Airflow: 3000-48000m³/h

Number of Electric Fields: 1-48pcs

Number of Power Supplies: 1-16pcs

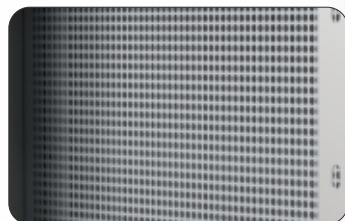
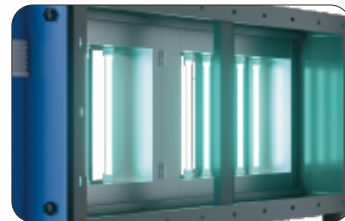
Housing Material: Cold Plate Spraying、Galvanised Sheet、201 Stainless Steel、304 Stainless Steel

UV Light Air Purifier Filter Accessories



Product Advantages:

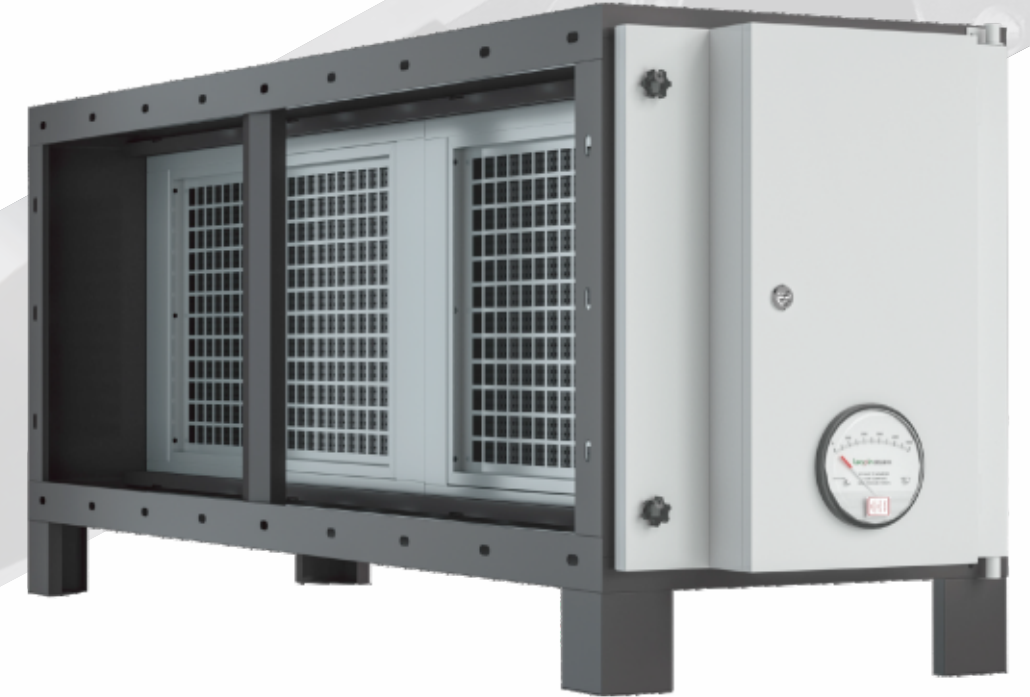
- 1. Imported high purity quartz lamp
- 2. 150W high efficiency ballast
- 3. Nanoscale Photocatalyst Filter



Product Characteristic:

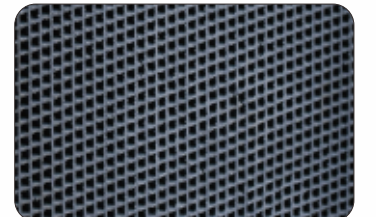
Rated Airflow:	3000-12000m ³ /h
Voltage & Frequency:	220V/50Hz
Power:	90-360W
Number of Lamps:	3-12pcs
Housing Material:	Cold Plate Spraying, Galvanised Sheet, 201 Stainless Steel, 304 Stainless Steel

Active Carbon Air Purifier Filter Accessories



Product Advantages:

- 1. Honeycomb through-hole structure
- 2. Alloy carbon box pull-in design
- 3. Intelligent purification force meter



Product Characteristic:

Rated Airflow:	3000-12000m ³ /h
Quantity of Activated Carbon:	16-56
Weights:	39-81KG
Housing Material:	Cold Plate Spraying, Galvanised Sheet, 201 Stainless Steel, 304 Stainless Steel

04 Cabinet fan series

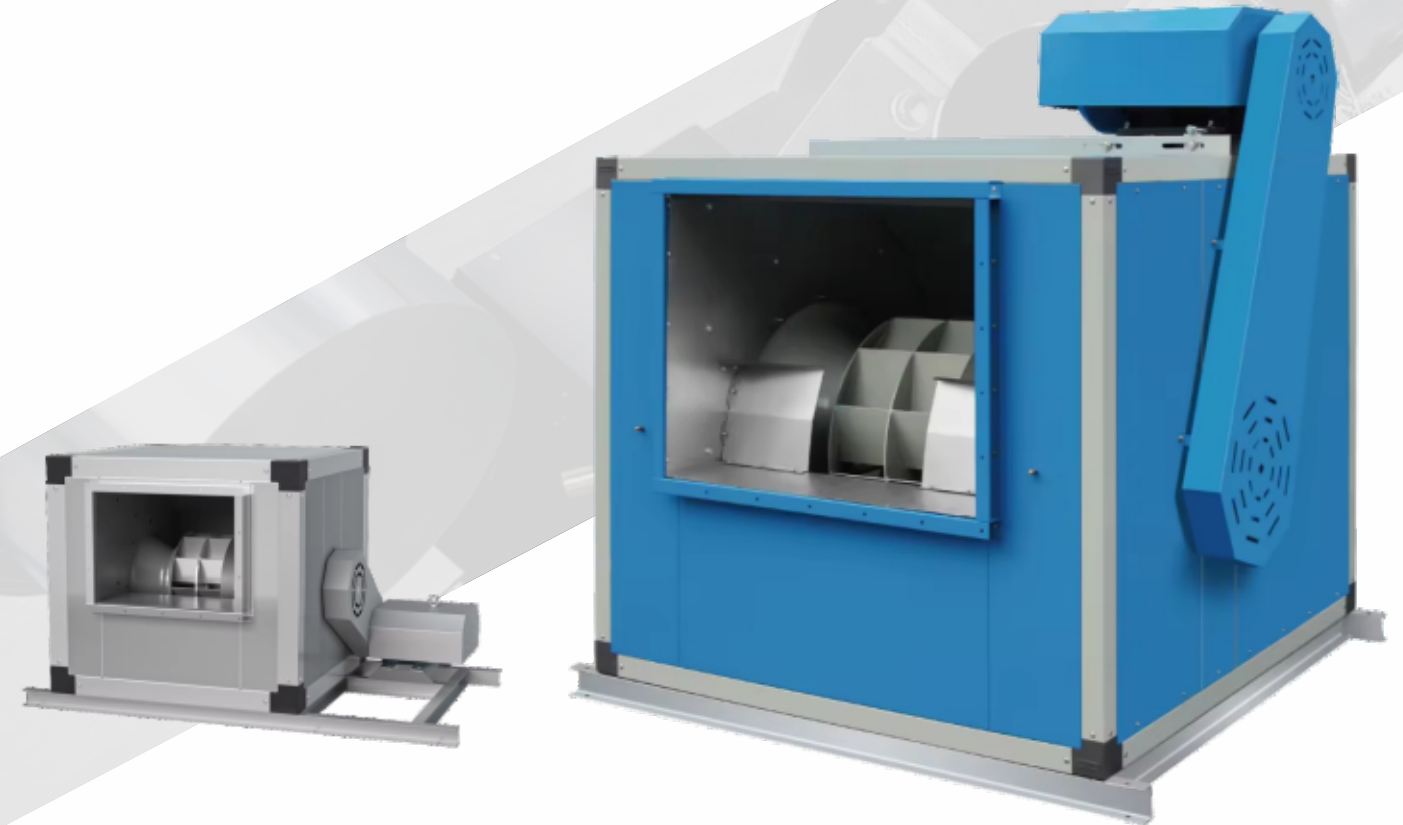
柜式系列

AN INDUSTRY-LEADING FANS MANUFACTURER & VENTILATION SYSTEM DESIGNER



LT-BC

Cabinet fan series

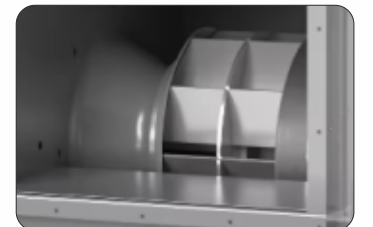


Product Advantages:

- 1. High pressure, high efficiency
- 2. Double wall designed
- 3. Adjustable speed, wide application scope

Product Characteristic:

Model:	315,355,400,420,450,500,560,630, 710,800,850,900,1000,1150,1250
Airflow(m ³ /h):	2500-170000
Total pressure(Pa):	200-1800
Impeller:	Backward inclined centrifugal impeller
Bearing:	Insert bearing with housing(UKP)
Transmission mode:	Belt drive
Pulley:	European-style pulley(SP)
Overall material:	Galvanized sheet



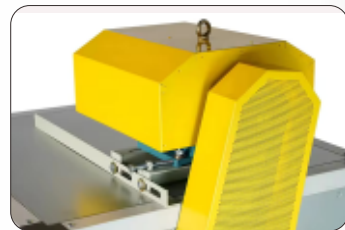
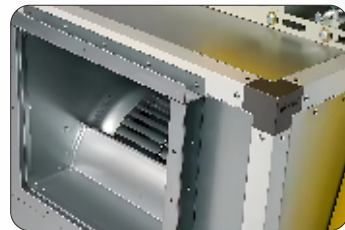
LT-FC

Cabinet fan series



Product Advantages:

- 1. High volume, low noise
- 2. Double wall designed
- 3. Wide product range

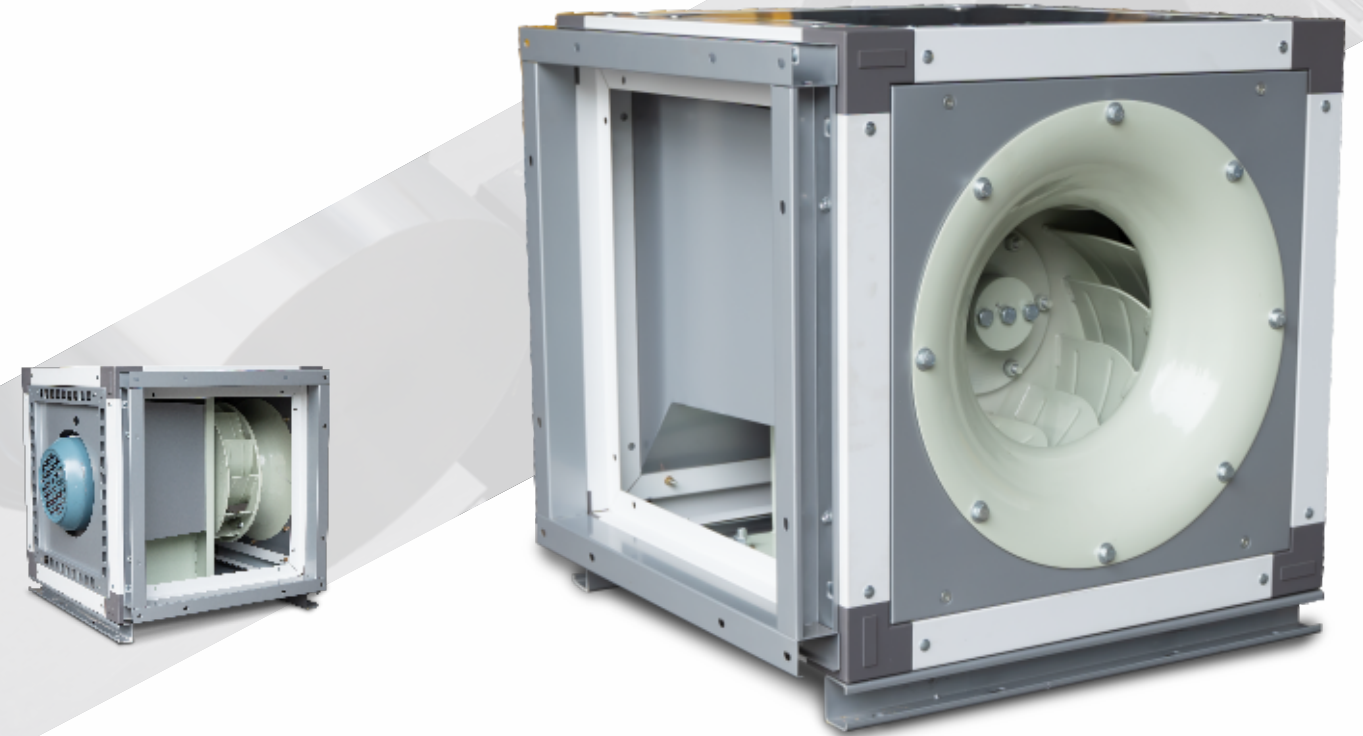


Product Characteristic:

Model:	250,280,315,400,450,500,560,630,710,800,850,900,1000
Airflow(m ³ /h):	1700-120000
Total pressure(Pa):	200-1600
Impeller:	Forward curved centrifugal impeller
Bearing:	Insert bearing with housing(UKP)
Transmission mode:	Belt drive
Pulley:	European-style pulley(SP)
Overall material:	Galvanized sheet

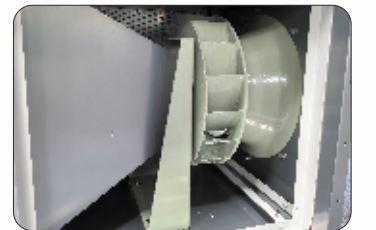
PFHP

Cabinet fan series



Product Advantages:

- 1. Motor protection designed
- 2. High efficiency impeller
- 3. Water leak proof base



Product Characteristic:

Model:	315,355,400,450,500,560,630,710,800,900,1000
Airflow(m ³ /h):	60Hz:1100-45400 50Hz:900-42200
Maximum static pressure(Pa):	60Hz:370-2500 50Hz:260-1750
Impeller:	Backward inclined centrifugal impeller
Transmission mode:	Motor direct drive
Overall material:	Carbon steel coating

05 Inline fan series

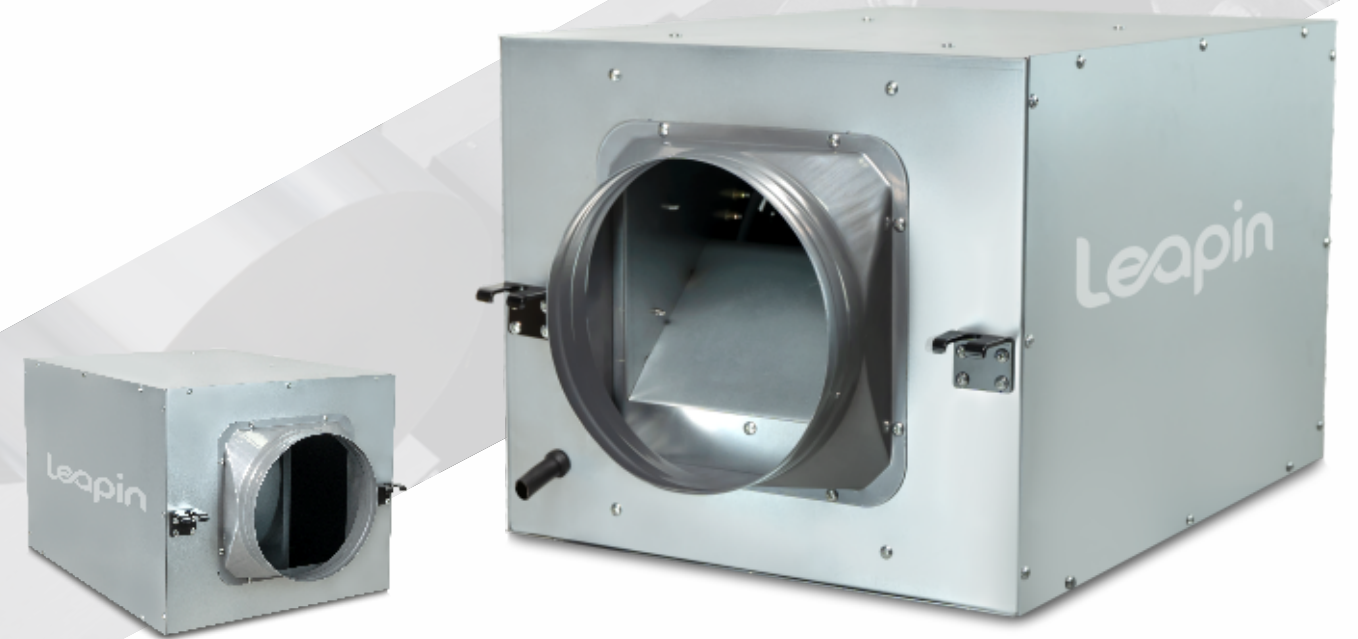
内置风机系列

AN INDUSTRY-LEADING FANS MANUFACTURER & VENTILATION SYSTEM DESIGNER



DPT

Inline fan series

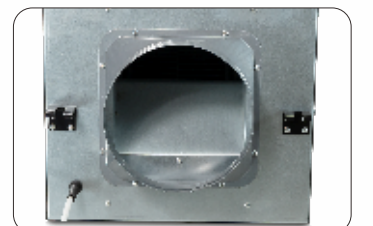
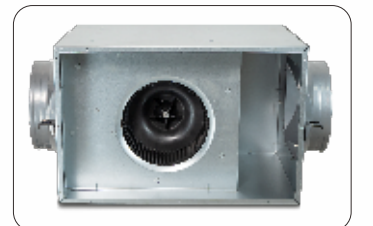


Product Advantages:

1. Silent designed
2. Compact size
3. Easy maintenance

Product Characteristic:

Model:	15-A,20-A,20-B,25-A,25-B
Airflow(m ³ /h):	500-2000
Maximum static pressure(Pa):	150-300
Impeller:	Forward curved centrifugal impeller
Transmission mode:	Motor direct drive
Overall material:	Galvanized sheet



KTJ

Inline fan series

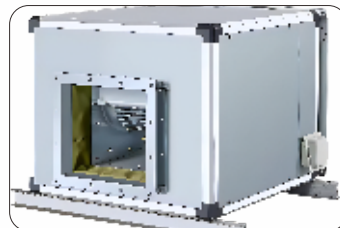


Product Advantages:

- 1. Silent designed
- 2. Compact size, high volume
- 3. Easy maintenance

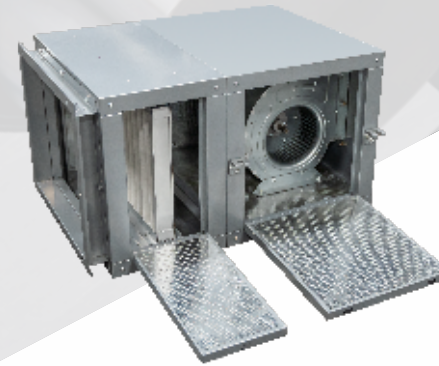
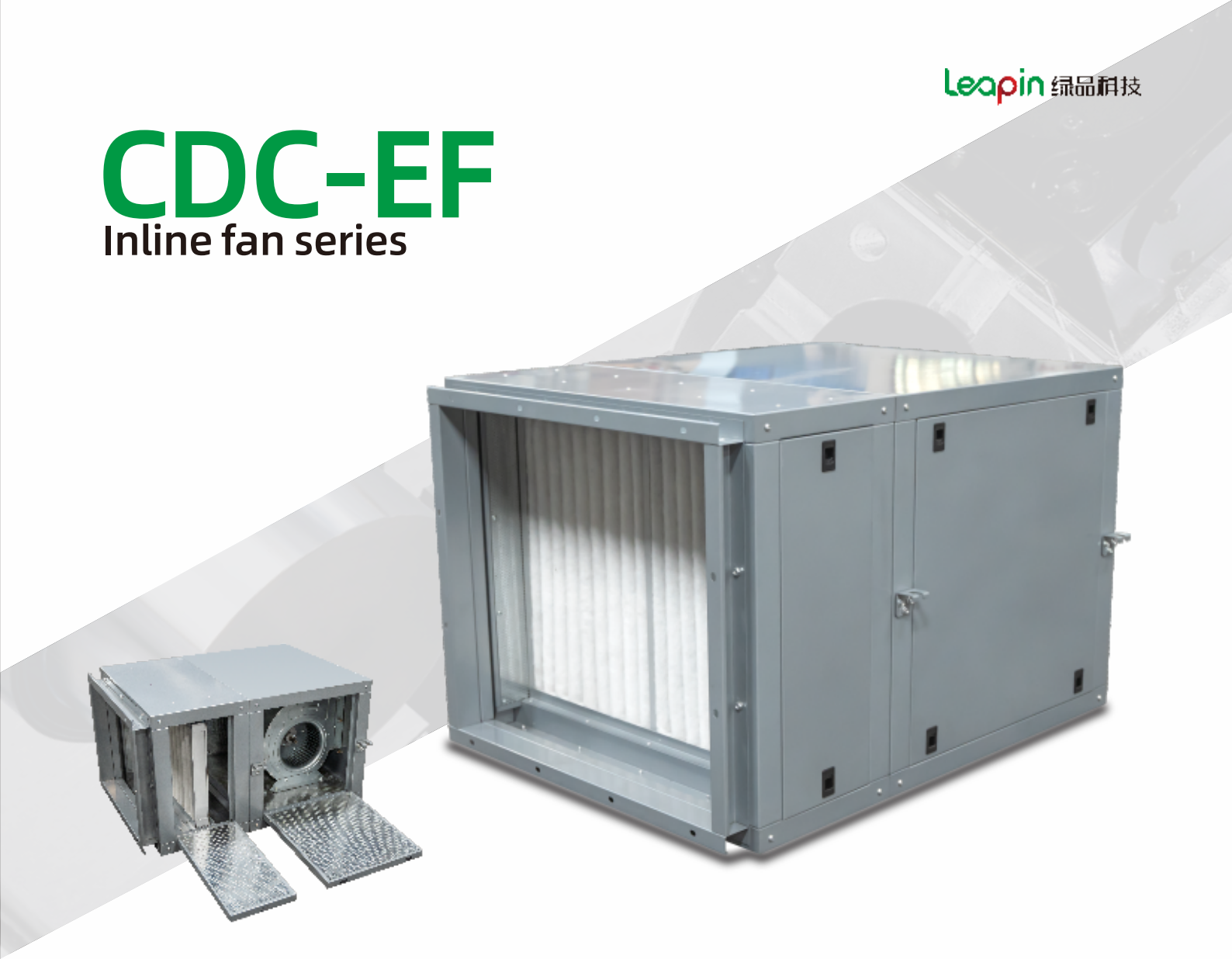
Product Characteristic:

Model:	200,230,250,315,355,380,400
Airflow(m ³ /h):	2000-12000
Maximum static pressure(Pa):	390-590
Impeller:	Forward curved centrifugal impeller
Transmission mode:	Motor direct drive
Overall material:	Galvanized sheet



CDC-EF

Inline fan series

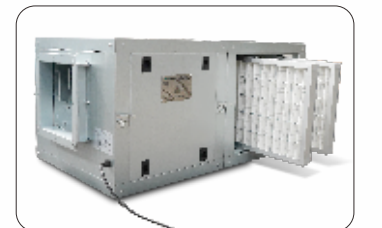
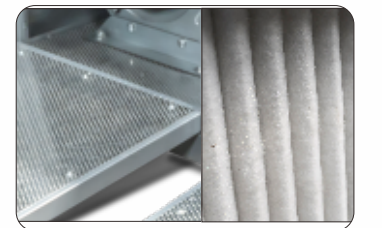
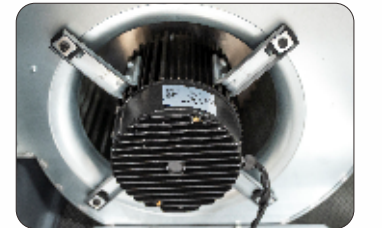


Product Advantages:

- 1. High efficiency, low noise
- 2. Real-time speed regulation
- 3. Small size and simple maintenance
- 4. Customizable Filters

Product Characteristic:

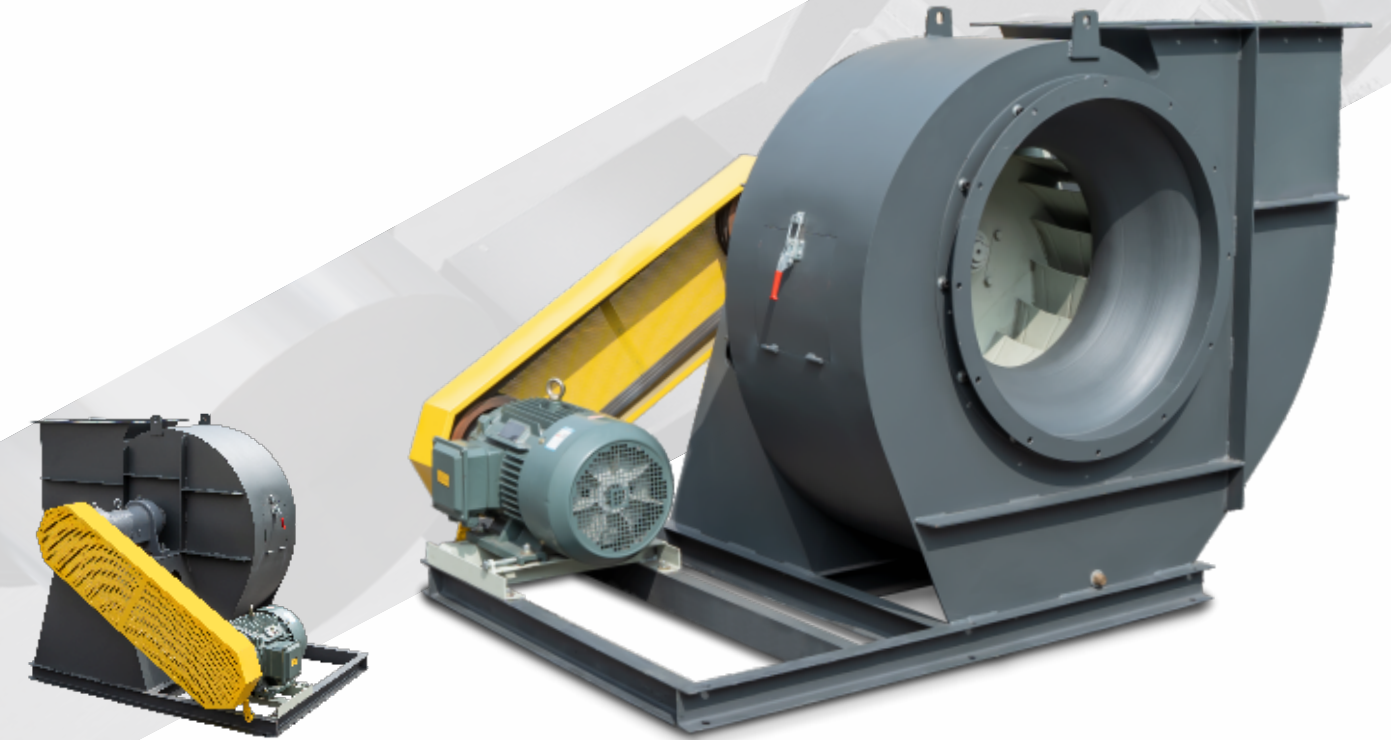
Model:	200. 230. 315. 335
Airflow(m ³ /h):	3000-7500
Maximum static pressure(Pa):	315-630
Impeller:	double air inlet forward inclined impeller
Transmission mode:	Motor direct drive
Overall material:	highquality steel materials
Customizable Filters:	G4、F8、H13 (Filtration Grade)





LP73

Industrial fan series



06 Industrial fan series

工业风机系列

AN INDUSTRY-LEADING FANS MANUFACTURER & VENTILATION SYSTEM DESIGNER

Product Advantages:

1. High efficiency impeller designed
2. Wide range of applications
3. High static pressure

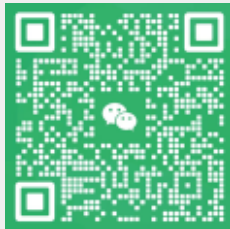
Product Characteristic:

	LP73-A	LP73-C	LP73-D
Model:	500,560,630,710,800,850,900,1000,1120,1250		
Airflow(m ³ /h):	3700-93000	4400-89000	3700-93000
Total pressure(Pa):	120-4200	250-2600	120-4200
Impeller:	Backward inclined centrifugal impeller		
Transmission mode:	Motor direct drive	Coupling drive & Belt drive	Coupling drive
Overall material:	Carbon steel coating		





WhatsApp



Wechat

CONTACT US

Tel : +86 18316499216

Alibaba: gdlvpin.en.alibaba.com

Email : willxie@leapintech.com

Company Address : No. 5 Chuangye Road, The third industrial district, Xiabai, Luocun, Shishan town, Foshan, China