
YOSO LARGE SCREW

JINGPENG MACHINERY & EQUIPMENT (SHANGHAI) CO., LTD.

Best Partner of Linear Motion





Company introduction

Jingpeng Machinery Equipment (Shanghai) Co., Ltd. has devoted itself to research in the field of rolling functional components, and with many advantages such as technology, equipment, scale, brand, and culture, it is unique in large-scale, high-speed, high-precision, and import substitution.



Screw guide pair for vertical machining center



FDDC, FSDC end block type high speed precision ball screw pair
GZB precision heavy-duty roller guide pair

Product model:

VMC500、650、850、855、1160

Features:

High speed:

The fastest rapid movement speed is 48m/min, and the highest speed is 3000r/min

Precision:

Ball screw P2, P3 level, rolling guide level 2, 3 batch supply

Serialization:

Nominal diameter: 32, 40
Nominal lead: 12, 16 Guide rail
Specifications: GZB35, GZB45

Lead screw guide pair for inclined bed CNC lathes

Product model:

32K、40K

Features:

High speed:

Rapid moving speed 36m/min, rotating speed 3000r/min

Precision:

Ball screw P3 level; rolling guide level 3

Serialization:

Screw diameter: 25, 32, 40
Screw lead: 10, 12, 16

Screw guide rail pair for gantry machining center



FDDC end block type high speed precision ball screw pair
GZB precision heavy-duty roller guide pair

Features:

High speed:

The fastest rapid movement speed is 20m/min, and the maximum speed is 2000r/min.

The screw can be made into a hollow forced cooling structure

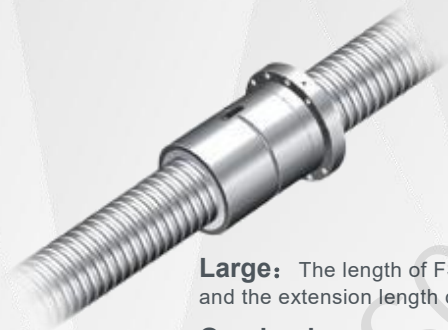
Precision:

Ball screw P2, P3 level,
Rolling guide level 2, 3 batch supply

Serialization:

Nominal diameter: 50, 63, 80, 100, 125, 160
Nominal lead: 10, 12, 16, 20, 25, 30

Large heavy-duty ball screw pair



Large: The length of FSVC and FDVC can reach up to 10 meters, and the extension length can reach 19 meters.

Overload: Rated dynamic load 126 tons, rated static load 595 tons

Serialization: Ball screw nominal diameter 63, 80, 100, 120, 160, 200

Short delivery time: 30 days

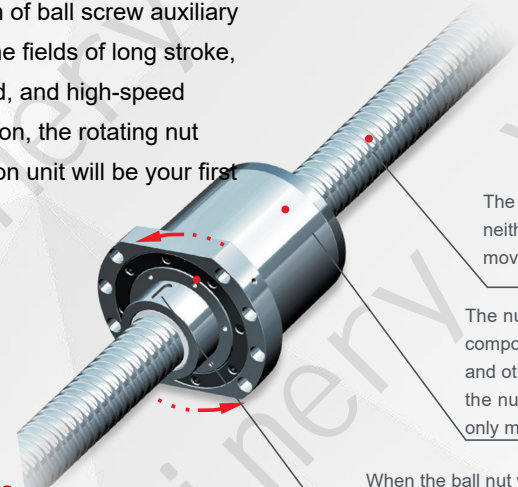
Industrialization: Ball screw subsidiary industrialization base

Applications:

It is widely used in large gantry boring and milling machines, composite machining centers, aerospace, large mechanical lifting equipment, large ship locks, forging equipment, metallurgical equipment, hydraulic equipment, large aircraft and ships, large power generation equipment and other fields.

Rotating nut combination unit

The ball nut main drive is a revolution in the form of ball screw auxiliary drive. In the fields of long stroke, heavy load, and high-speed transmission, the rotating nut combination unit will be your first choice.



The ball screw operates with neither rotation nor axial movement.

The nut set assembly is mainly composed of bearings, nut sets and other parts. When working, the nut set does not rotate but only moves axially.

When the ball nut works, it rotates and moves axially.

High stiffness:

Compared with the method where the screw

rotation is the active drive, the cloth

The size of the bearing placed on the outer circle of the nut is large; at the same time

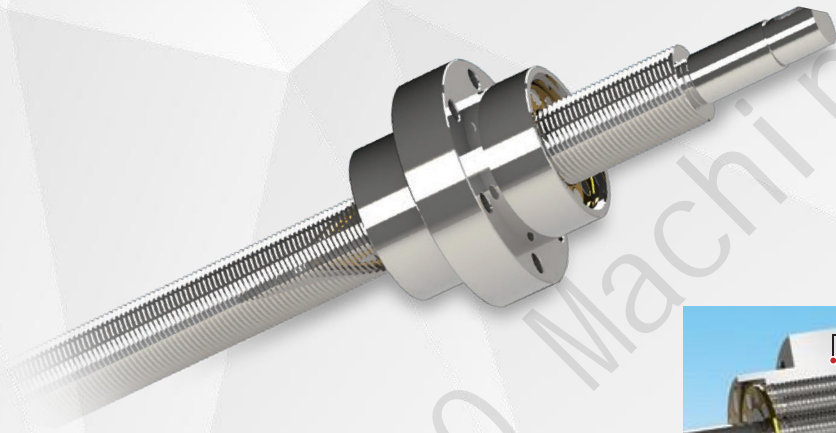
Since the screw does not rotate, there is no need to install bearings on its journal.

A greater axial pretension force can be applied to the screw to make

The stiffness of the entire ball screw pair is greatly improved.

Easy to design and install:

The rotating nut combination unit integrates multiple functional components into one. Simplified design for easy installation and debugging.



Planetary roller screw pair

Product specifications:

Diameter Ø30, Ø39, Ø48, Ø60, lead 10, 15, 20

Features:

Extra large load and high rigidity:

The rolling elements and the screw raceway are in line contact

High precision retention:

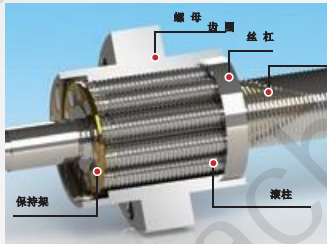
Hardness after quenching is HRC58 or above

High speed and high acceleration:

There is no return circulation device, which can achieve high moving speed and acceleration of the screw pair.

Application fields:

Servo electric cylinder



Heavy-loaded lead screw spline composite unit



★High load
★High precision

★Low noise
★Compact structure

Ball screw diameter (mm)	32	40	50	75	80
Axial dynamic load rating (kN)	58	80	106	131	208
Axial static load rating (kN)	112	162	255	412	583
Journey (mm)	≥400				

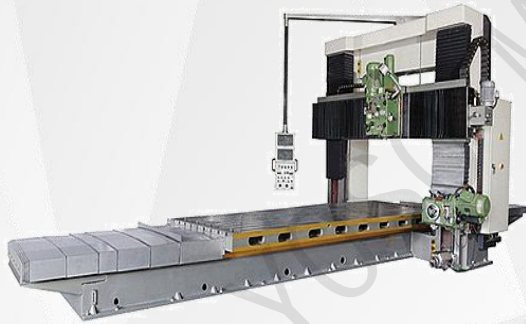


Product Application-CNC Grinding Machine

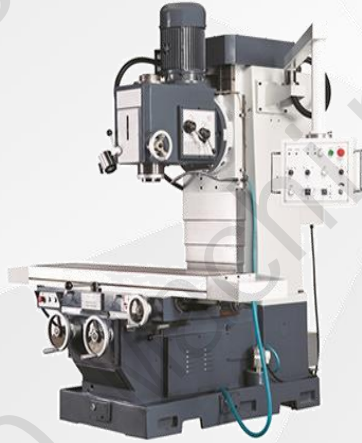




Product Application-CNC Milling Machine



Milling machine



Vertical CNC milling machine



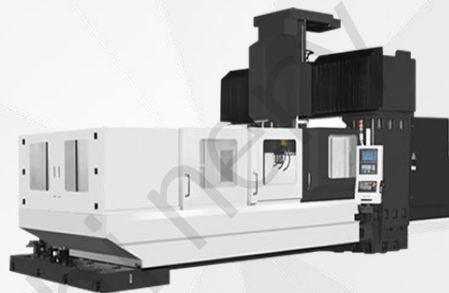
CNC milling machine



Product Application-Machining Center



Gantry machining center



Gantry machining center

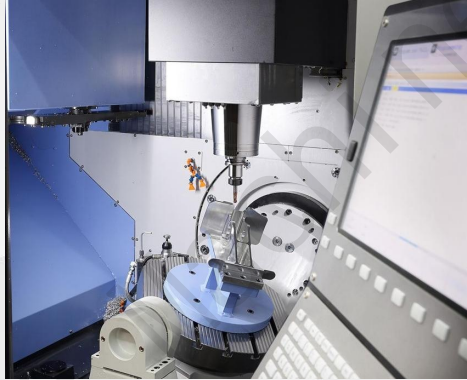


Vertical Machining Center



Vertical Machining Center

Product application-five-axis linkage machining center



Factory equipment



德国CNC 10米高速硬体旋铣螺纹加工机床



INDEX车铣复合加工中心



10米数控外圆磨



日本三井2米高精度数控螺纹磨床



10米激光丝杠(副)行程测量仪



德国EFD数控丝杠小变形压淬机床



10米CNC中频淬火机床

Full performance laboratory-100% performance qualified



Static stiffness test of screw guide rail



Screw guide accuracy retention test



Screw guide high speed
Performance test

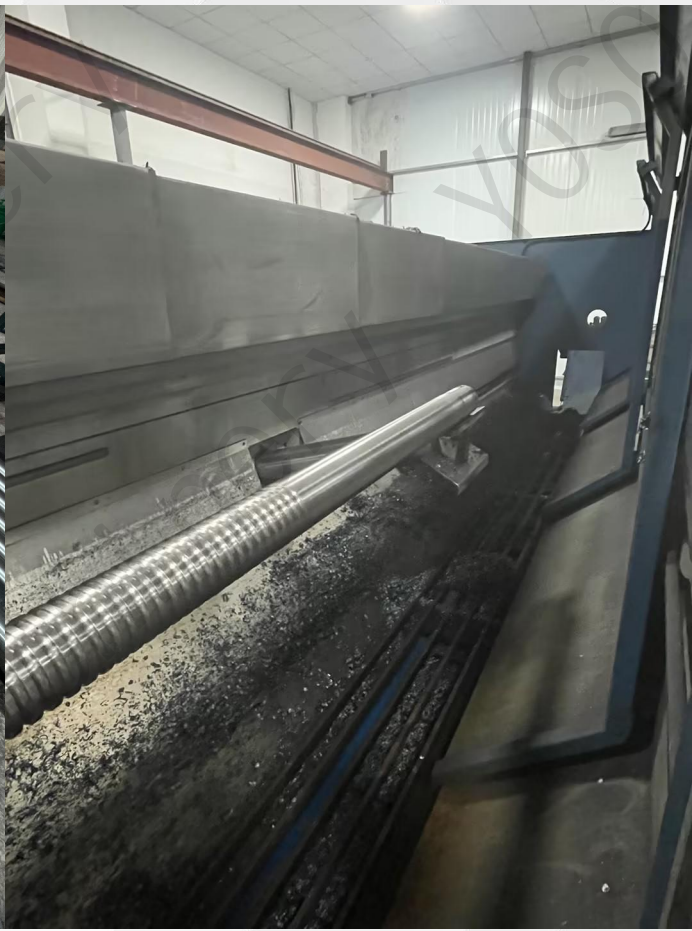
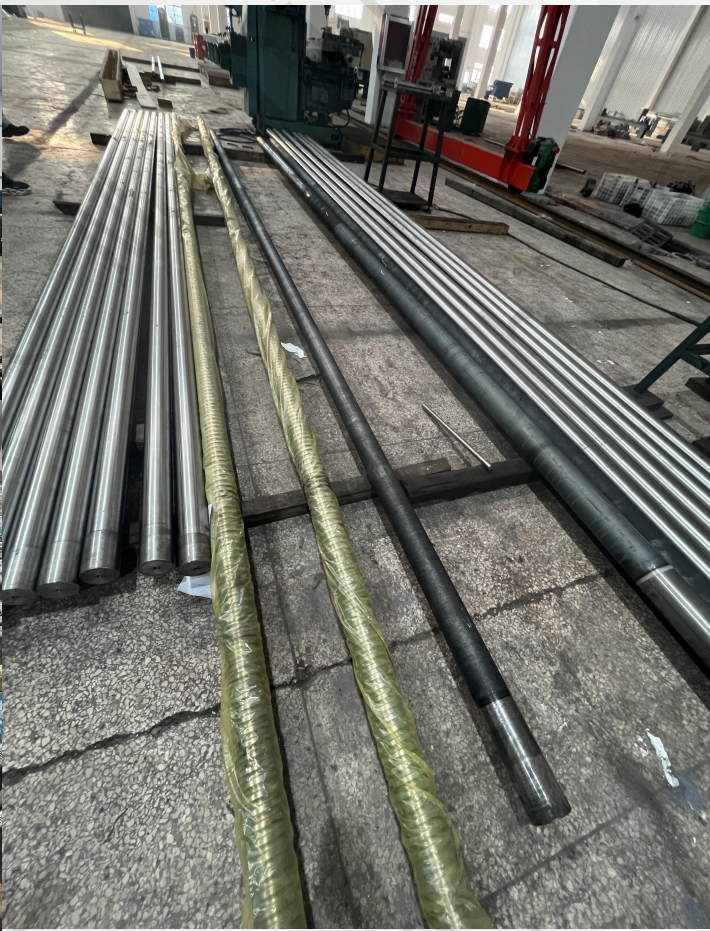


Screw guide fatigue life test



Screw guide reliability test

Production real shots



Production real shots





Production real shots





Test Report

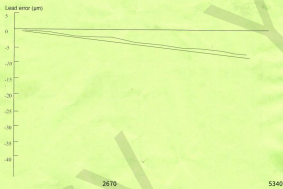
YOSO Ground Ball Screw Inspection Test

Model		FD0C12520TR-B-C2--5340X680-003	
		Measured Result	
Variation V_{iso}	(μm)	8	V_{iso} (μm) 7
Compensation T	(μm)	137	$\text{aga}T$ (μm) 135
Variation V_{is}	(μm)	40	V_{is} (μm) 38
Variation V_{iso}	(μm)	5	V_{iso} (μm) 4
Mean Travel DV, ep	(μm)	62	ep (μm) 61
Grade		C2	

Accuracy

The test accuracy of precision ball screws (C2 to C5 grades) conforms to the four characteristics specified in DIN60201 Standards. These characteristics are represented by codes V_{is} , V_{iso} , and V_{iso} . Table 1 explains the definition of each characteristic, and shows allowable value of each.

Table 1.2.1 and 1.3 show tolerance of each characteristic, using the specification of C type only.



Date: 2023.9.26/Inspector: 黄吕兰

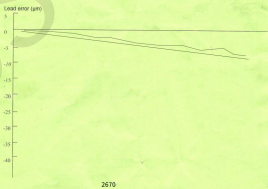
YOSO Ground Ball Screw Inspection Test

Model		FD0C12520TR-B-C2--5340X680-001	
		Measured Result	
Variation V_{iso}	(μm)	8	V_{iso} (μm) 7
Compensation T	(μm)	137	$\text{aga}T$ (μm) 135
Variation V_{is}	(μm)	40	V_{is} (μm) 38
Variation V_{iso}	(μm)	5	V_{iso} (μm) 4
Mean Travel DV, ep	(μm)	62	ep (μm) 61
Grade		C2	

Accuracy

The test accuracy of precision ball screws (C2 to C5 grades) conforms to the four characteristics specified in DIN60201 Standards. These characteristics are represented by codes V_{is} , V_{iso} , and V_{iso} . Table 1 explains the definition of each characteristic, and shows allowable value of each.

Table 1.2.1 and 1.3 show tolerance of each characteristic, using the specification of C type only.



Date: 2023.9.27/Inspector: 黄吕兰

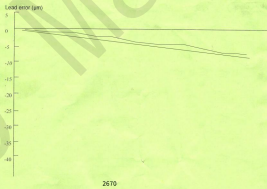
YOSO Ground Ball Screw Inspection Test

Model		FD0C12520TR-B-C2--5340X680-002	
		Measured Result	
Variation V_{iso}	(μm)	8	V_{iso} (μm) 5
Compensation T	(μm)	137	$\text{aga}T$ (μm) 136
Variation V_{is}	(μm)	40	V_{is} (μm) 39
Variation V_{iso}	(μm)	5	V_{iso} (μm) 3
Mean Travel DV, ep	(μm)	62	ep (μm) 60
Grade		C2	

Accuracy

The test accuracy of precision ball screws (C2 to C5 grades) conforms to the four characteristics specified in DIN60201 Standards. These characteristics are represented by codes V_{is} , V_{iso} , and V_{iso} . Table 1 explains the definition of each characteristic, and shows allowable value of each.

Table 1.2.1 and 1.3 show tolerance of each characteristic, using the specification of C type only.



Date: 2023.9.27/Inspector: 黄吕兰

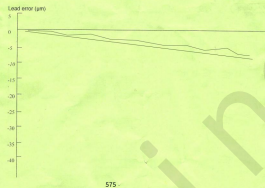
YOSO Ground Ball Screw Inspection Test

Model		FD0C12520TR-B-C2--1150X680-001	
		Measured Result	
Mean Travel DV, ep	(μm)	8	ep (μm) 6
Compensation T	(μm)	27	$\text{aga}T$ (μm) 26
Variation V_{is}	(μm)	40	V_{is} (μm) 39
Variation V_{iso}	(μm)	5	V_{iso} (μm) 5
Variation V_{iso}	(μm)	62	V_{iso} (μm) 60
Grade		C2	

Accuracy

The test accuracy of precision ball screws (C2 to C5 grades) conforms to the four characteristics specified in DIN60201 Standards. These characteristics are represented by codes V_{is} , V_{iso} , and V_{iso} . Table 1 explains the definition of each characteristic, and shows allowable value of each.

Table 1.2.1 and 1.3 show tolerance of each characteristic, using the specification of C type only.



Date: 2023.9.26/Inspector: 黄吕兰

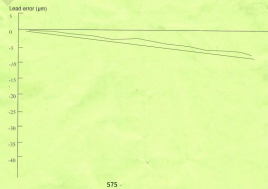
YOSO Ground Ball Screw Inspection Test

Model		FD0C12520TR-B-C2--1150X680-002	
		Measured Result	
Variation V_{iso}	(μm)	8	V_{iso} (μm) 7
Compensation T	(μm)	27	$\text{aga}T$ (μm) 25
Variation V_{is}	(μm)	40	V_{is} (μm) 38
Variation V_{iso}	(μm)	5	V_{iso} (μm) 4
Mean Travel DV, ep	(μm)	62	ep (μm) 61
Grade		C2	

Accuracy

The test accuracy of precision ball screws (C2 to C5 grades) conforms to the four characteristics specified in DIN60201 Standards. These characteristics are represented by codes V_{is} , V_{iso} , and V_{iso} . Table 1 explains the definition of each characteristic, and shows allowable value of each.

Table 1.2.1 and 1.3 show tolerance of each characteristic, using the specification of C type only.



Date: 2023.9.26/Inspector: 黄吕兰



Test Report

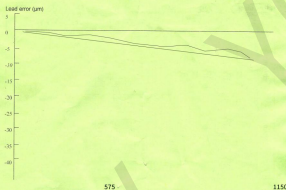
YOSO Ground Ball Screw Inspection Test

Model		FDDC12520TR-18-C2-1150X680-003	
		Measured Result	
Variation V_{iso}	(μm)	8	V_{iso} (μm) 6
Compensation T	(μm)	27	$ap+T$ (μm) 26
Variation V_u	(μm)	40	V_u (μm) 39
Variation V_{is}	(μm)	5	V_{is} (μm) 3
Mean Travel DV- ap	(μm)	62	ap (μm) 60
Grade		C2	

Accuracy

The lead accuracy of precision ball screws (C2 to C5 grades) conforms to the four characteristics specified in DIN65051 Standards. These characteristics are expressed by codes ap , V_u , V_{is} , and V_{iso} . Table 1.1 explains the definition of each characteristic, and shows allowable value of each.

Tables 1.2, 1.3 and show tolerance of each characteristic, uses the specification of C type only.



Date: 2023.9.26 Inspector: 黄昌兰

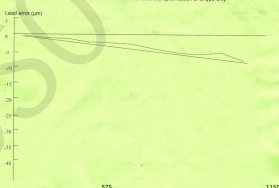
YOSO Ground Ball Screw Inspection Test

Model		FDDC12520TR-18-C2-1150X680-005	
		Measured Result	
Variation V_{iso}	(μm)	8	V_{iso} (μm) 6
Compensation T	(μm)	27	$ap+T$ (μm) 26
Variation V_u	(μm)	40	V_u (μm) 39
Variation V_{is}	(μm)	5	V_{is} (μm) 3
Mean Travel DV- ap	(μm)	62	ap (μm) 60
Grade		C2	

Accuracy

The lead accuracy of precision ball screws (C2 to C5 grades) conforms to the four characteristics specified in DIN65051 Standards. These characteristics are expressed by codes ap , V_u , V_{is} , and V_{iso} . Table 1.1 explains the definition of each characteristic, and shows allowable value of each.

Tables 1.2, 1.3 and show tolerance of each characteristic, uses the specification of C type only.



Date: 2023.9.26 Inspector: 黄昌兰

YOSO Ground Ball Screw Inspection Test

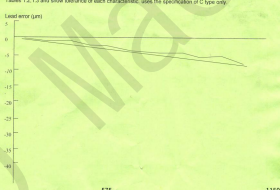
Model		FDDC12520TR-18-C2-1150X680-006	
		Measured Result	
Variation V_{iso}	(μm)	8	V_{iso} (μm) 7
Compensation T	(μm)	27	$ap+T$ (μm) 25
Variation V_u	(μm)	40	V_u (μm) 38
Variation V_{is}	(μm)	5	V_{is} (μm) 4
Mean Travel DV- ap	(μm)	62	ap (μm) 61
Grade		C2	

Accuracy

The lead accuracy of precision ball screws (C2 to C5 grades) conforms to the four characteristics specified in DIN65051 Standards. These characteristics are expressed by codes ap , V_u , V_{is} , and V_{iso} .

Table 1.1 explains the definition of each characteristic, and shows allowable value of each.

Tables 1.2, 1.3 and show tolerance of each characteristic, uses the specification of C type only.



Date: 2023.9.26 Inspector: 黄昌兰

YOSO Ground Ball Screw Inspection Test

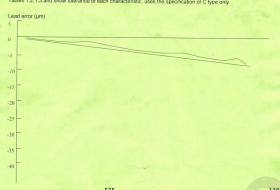
Model		FDDC12520TR-18-C2-1150X680-004	
		Measured Result	
Variation V_{iso}	(μm)	8	V_{iso} (μm) 7
Compensation T	(μm)	27	$ap+T$ (μm) 25
Variation V_u	(μm)	40	V_u (μm) 38
Variation V_{is}	(μm)	5	V_{is} (μm) 4
Mean Travel DV- ap	(μm)	62	ap (μm) 61
Grade		C2	

Accuracy

The lead accuracy of precision ball screws (C2 to C5 grades) conforms to the four characteristics specified in DIN65051 Standards. These characteristics are expressed by codes ap , V_u , V_{is} , and V_{iso} .

Table 1.1 explains the definition of each characteristic, and shows allowable value of each.

Tables 1.2, 1.3 and show tolerance of each characteristic, uses the specification of C type only.



Date: 2023.9.26 Inspector: 黄昌兰

YOSO Ground Ball Screw Inspection Test

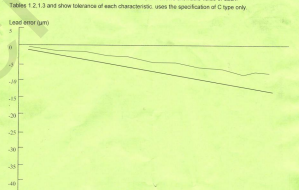
Model		FSC12020TR-S-C3-3936X3465-001	
		Measured Result	
Variation V_{iso}	(μm)	12	V_{iso} (μm) 10
Compensation T	(μm)	100	$ap+T$ (μm) 98
Variation V_u	(μm)	75	V_u (μm) 74
Variation V_{is}	(μm)	6	V_{is} (μm) 5
Mean Travel DV- ap	(μm)	89	ap (μm) 87
Grade		C3	

Accuracy

The lead accuracy of precision ball screws (C2 to C5 grades) conforms to the four characteristics specified in DIN65051 Standards. These characteristics are expressed by codes ap , V_u , V_{is} , and V_{iso} .

Table 1.1 explains the definition of each characteristic, and shows allowable value of each.

Tables 1.2, 1.3 and show tolerance of each characteristic, uses the specification of C type only.



Date: 2023.9.26 Inspector: 黄昌兰



CE

ZERTIFIKAT ■ CERTIFICATE ■ CERTIFICADO ■ CERTIFICAT

CERTIFICATE No. 230921-50883

EC-ATTESTATION CERTIFICATE OF MD

GTS

Client: Jingpeng Machinery & Equipment (Shanghai) Co., Ltd.
(Name & Address): Room 1913, Linden Building, No.100 Hengfeng North Road, Jing'an District, Shanghai

Manufacturer: Jingpeng Machinery & Equipment (Shanghai) Co., Ltd.
(Name & Address): Room 1913, Linden Building, No.100 Hengfeng North Road, Jing'an District, Shanghai

Description of Product (s): Ball Screw
0401, 0502, 0601, 0606, 0801, 1002, 1003, 1204, 1605, 1610, 2005, 2010, 2020, 2505, 2506, 2508, 2510, 3205, 3206, 3208, 3210, 3232, 4010, 4012, 4016, 5012, 5016, 6310, 6316, 8010, 8012, 10020, 10025, 12020, 12025, 16020, 16025, 16032

Models (s): 2505, 2506, 2508, 2510, 3205, 3206, 3208, 3210, 3232, 4010, 4012, 4016, 5012, 5016, 6310, 6316, 8010, 8012, 10020, 10025, 12020, 12025, 16020, 16025, 16032

Assessment Performed: Conformity to Annex I's Applicable Paragraphs of Machinery Directive 2006/42/EC

Standard(s) Referenced: EN ISO 12100:2010

Conditions Subject to Issue: Acceptance of information detailed in technical file MD-TCF-230921-50883 referenced against job file is 021-78963

Declaration: In the opinion of GTS the submitted technical file MD-TCF-230921-50883 satisfies the requirements of the Machinery Directive 2006/42/EC Annex-VII

Assessor ID No.: TR-IND-S20

Date/Place of Assessment: 2023/09/21

Date/Place of Issue: 2023/09/25

Date/Place of Expiry: 2028/09/24

Test reports in technical file MD-TCF-230921-50883 and referenced against job file is 021-78963 are reviewed and found to be acceptable. The CE mark as shown below can be used, under the responsibility of the manufacturer, after of an EU Declaration of Conformity and compliance with all relevant EU Directives.

CE

This EC-Attestation Certificate is only valid for the equipment and configuration described in conjunction with the data detailed above. It refers only to the sample submitted to Global Testing Services Co., Ltd. for testing and certification. Any modifications made to the product shall immediately be reported to Global Testing Services Co., Ltd. office in order to examine whether this certificate remains valid. This certificate shall not be reproduced except in full without the written approval of Global Testing Services Co., Ltd.

Approved by: Hermann Wehr

For and on behalf of: Shanghai Global Testing Services Co., Ltd.

Shanghai Global Testing Services Co., Ltd.
E-mail: info@gts-lab.com; <http://www.gts-lab.com>
Floor 2nd, Building D-1, No. 126, Shierli Road, Minhang District, Shanghai, China.

GTS
CERTIFICATION



9001

Qingpeng Century
Certification services

**CERTIFICATE OF QUALITY
MANAGEMENT SYSTEM**

THIS IS TO CERTIFY THAT

Jingpeng Machinery Equipment (Shanghai) Co., LTD

Registration Address: Building A, Room 1028, Building 3, No.3788 Tingfeng Road, Zhujing Town, Jinshan District, Shanghai
Business Address: 1913, Linden Building, 100 Hengfeng North Road, Jing'an District, Shanghai

**The quality management system
has passed the review and is in conformity with
GB/T19001-2016 idt ISO9001:2015**

SCOPE OF CERTIFICATION

Sales of mechanical equipment and accessories

Certificate No: DC23Q0219R05
Unified social credit code: 91310115MA1G000046
Issue Date: 2023.10.23
Reissue Date: 2023.10.23
Valid Until: 2026.10.22

Issuer: 胡冬院

GTS
CERTIFICATION

高鹏世纪认证 (安徽) 有限公司
证书专用章

The certificate is valid within the scope of validity of all administrative and qualification bodies subject to the regulations.
It shall be maintained by regular surveillance assessments and shall be valid when used in conjunction.
The certificate can be found on our website <http://www.daqingpeng.com> and national certification and recognition information public service platform <http://cx.cmaa.cn/Query.asp>

上海全球检测服务有限公司
E-MAIL: AD0001Shanghai@gts-lab.com
ADDRESS: Room 2012, 20th Floor, Green Yantai, Sunanmoh Building 16161, Anhui

THANKS FOR WATCHING

Best Partner of linear motion

