

官方微信



FO Bearings
WhatsApp 商业帐号

河北梵欧轴承贸易有限公司

HEBEI FO BEARINGS TRADING CO., LTD

Contacts : TanyaHEBEI FOBEARINGS TRADING CO.,LTD

Mobile: +86-189 3198 9553

Skype: huangdi.murk

<http://fo-bearing.com>

E-mail: worldbearings@foxmail.com

Add: 河北省邢台市临西县轴承工业园区光明路东首路南
South of First Road, Guangming Road, Bearing Industrial Park,
Linxi County, Xingtai City, Hebei Province

- 梵欧集团 (FO GROUP)
FOBEARINGS CO., LIMITED
- 梵欧轴承有限公司 (香港FO- HONG KONG)
HEBEI FOBEARINGS TRADING CO.,LTD
- 梵欧轴承有限公司 (英国FO-ENGLAND)
FOBEARINGS SDN. BHD.
- 梵欧轴承有限公司 (马来西亚 FO-MALAYSIA)
LLC "MK TRUST"
- 梵欧轴承有限公司 (俄罗斯FO-RUSSIA)

FOBEARINGS

河北梵欧轴承贸易有限公司

HEBEI FO BEARINGS TRADING CO., LTD



COMPANY PROFILE 企业简介



河北梵欧轴承贸易有限公司是一家集设计、研发为一体的专业滑动轴承产业，本公司生产轴承加工工艺精湛，生产设备先进，检测手段完备，产品质量稳定可靠，深受用户信赖。主要生产的产品系列有无油润滑轴承、水润滑轴承、镶嵌固体润滑轴承、边界润滑轴承、油润滑轴承、脂润滑轴承等全系列滑动轴承。公司严格按照ISO001:2008体系标准管理企业并组织生产，产品深受客户的信任。产品基本销往欧美、东南亚、中东等国家和地区，年产各类轴承500万套。

我们秉承为客户提供“最好的产品、最好的服务”的理念，坚持以持续的技术改进和科学管理，不断完善质量保证体系和售后服务体系，为客户提供系统性解决方案；我们始终以人为本，我们相信有优秀的员工和优秀的团队才会有优质的产品和服务：我们一直致力于打造诚信的“FO”品牌，力求通过科学的管理，执行严格的质量标准，细致入微的质量控制措施，提升产品品质和服务质量，为全球消费者提供高品质的产品和优质的服务，与每一位合作伙伴共同实现“成长、成功、成就”是FO人永完不变的梦想。

Hebei FO Bearings Trading Co., Ltd. is a collection of design, research and development as one of the professional sliding bearing industry, the company produces bearing processing technology, advanced production equipment, complete testing means, stable and reliable product quality, trusted by users. The main product series are oil-lubricated bearings, water-lubricated bearings, inlaid solid lubricated bearings, boundary lubricated bearings, oil-lubricated bearings, grease-lubricated bearings and other full range of sliding bearings. The company strictly follows the ISO001:2008 system standard to manage the enterprise and organize production, and the products are deeply trusted by customers. The products are basically sold to Europe, America, Southeast Asia, the Middle East and other countries and regions, with an annual output of 5 million sets of various types of bearings.

We adhere to the concept of providing customers with "the best products and the best service", adhere to continuous technological improvement and scientific management, constantly improve the quality assurance system and after-sales service system, and provide customers with systematic solutions; We are always people-oriented, we believe that there are excellent employees and excellent team will have high-quality products and services: we have been committed to building the integrity of the "FO" brand, and strive to improve product quality and service quality through scientific management, the implementation of strict quality standards, meticulous quality control measures, to provide global consumers with high-quality products and quality services, and every partner to achieve "growth, success, achievement" is the dream of FO people forever.

DONRAY

十字轴万向节
Universal-joint

联轴节
Universal-joint

冷挤轴套十字轴万向节
Universal-joint
(Bearing Cup by cold Forged)

十字轴差速器
Differential spider

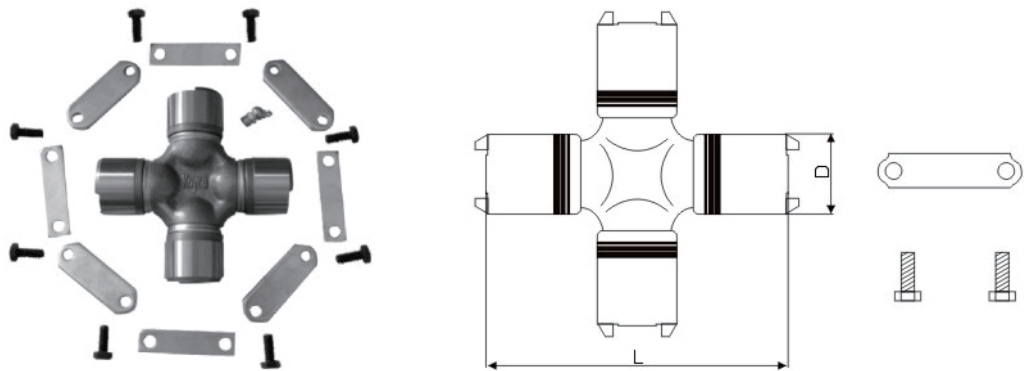
轮毂单元
Wheel Hub Unit/Bearing

半轴套管
Spindle Knuckle

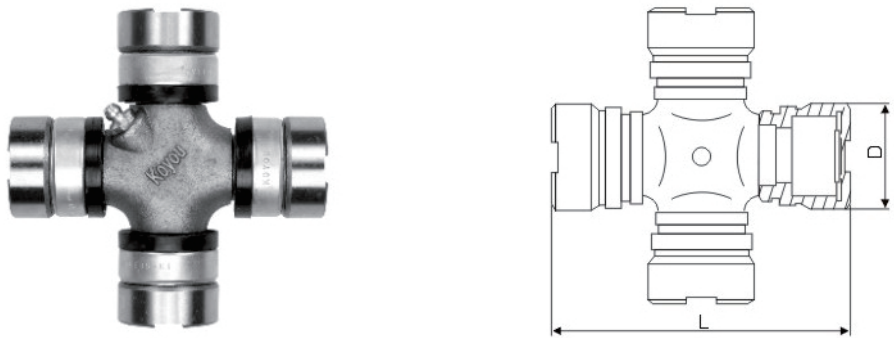
滑动叉与花键轴
Sleeve Yoke&shaft

CONTENTS 目录

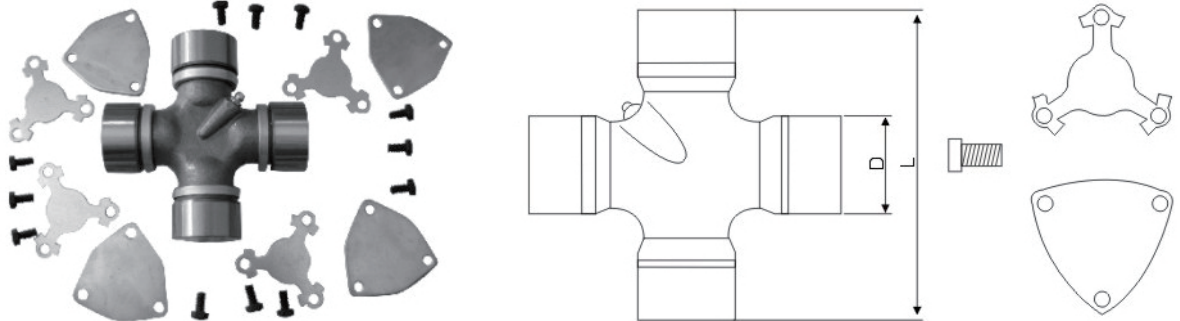




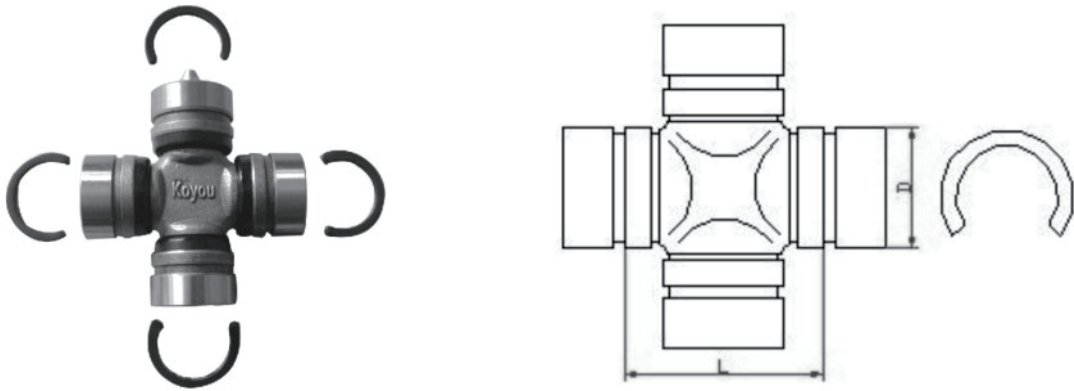
No.	PART No.	D/mm×L/mm	Grease Nipple	Components
A1	GUIS54	Φ36x97		Lock Kit & bolt
A2	GUIS55	Φ42x125		Lock Kit & bolt
A3	GUN41	Φ43x136(142)	M	Lock Kit & bolt
A4	GUM71	Φ44x129	M	Lock Kit & bolt
A5	GUIS65	Φ45.98x136		Lock Kit & bolt
A6	GUM80	Φ46x142	M	Lock Kit & bolt
A7	GUM90	Φ46x148	M	Lock Kit & bolt
A8	GUH70	Φ47x130	M	Lock Kit & bolt
A9	GUH72/KC3135AD	Φ47x144	M	Lock Kit & bolt
A10	GUIS57	Φ48x145	M	Lock Kit & bolt
A11	GUH73/KC3538D	Φ50x165	M	Lock Kit & bolt
A12	GUM83	Φ52x153.8	M	Lock Kit & bolt
A13	KC52170ADW/GUM96	Φ52x170	M	Lock Kit & bolt
A14	MC998476	Φ52x170	M	Lock Kit & bolt
A15	GUN43	Φ55x163.8	M	Lock Kit & bolt
A16	GUH75/KC3845ADW	Φ58x175	M	Lock Kit & bolt



No.	PARTN No.	D/mm×L/mm	Grease Nipple
B1	GUH63NC/NJ130	Φ35x98	M/B
B2	GU3500/NCEQ140	Φ39x118	B
B3	GU1401804805-K1/CA140	Φ39x118	B
B4	GUIS65/TDJ72R	Φ45.98x136	
B5	GU4000NC	Φ47.62x135	B
B6	GU160/JN162	Φ50x135	M
B7	GU150155/210-2201025	Φ50x155.3	

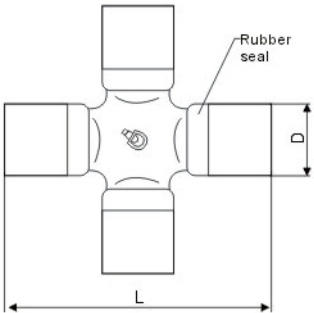
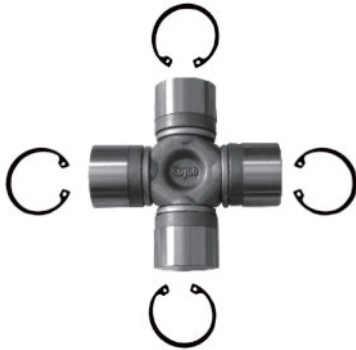


No.	PART No.	D/mm×L/mm	Grease Nipple	Components	GMB No.	PRECION
C1	2324580/40350161	Φ44.06x126	B/M	Lock Kit & bolt	GU3800	467
C2	1651032/MV0001	Φ50.05x152.6	M	Lock Kit & bolt	GU3810	468
C3	Uj990	Φ57x152.5		Lock Kit & bolt		



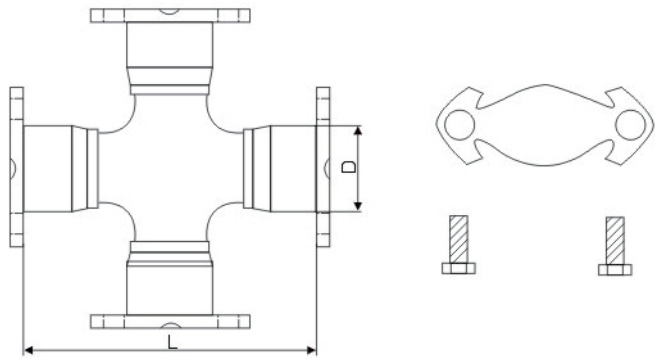
No.	PART No.	D/mm×L/mm	Grease Nipple	Components
D1	GUN28	Φ20.01x35.0	Bearing Cap	Snap Ring
D2	GUS-2	Φ20.01x35.1	No	Snap Ring
D3	40350139	Φ22x36.8(40卡外)	M	Snap Ring
D4	40350137	Φ22x37.5(60)	NO	Snap Ring
D5	Mv0004	Φ22x37.3(54)	B	Snap Ring
D6	RUJ-1505	Φ22x38.5	NO	Snap Ring
D7	RUJ-1504	Φ22x35.5	Bearing Cap	Snap Ring
D8	GUMZ-10	Φ22.5x35.0	Bearing Cap	Snap Ring
D9	GUD88	Φ22.5x34.9	Bearing Cap	Snap Ring
D10	40350155	Φ22.5x35.50	Bearing Cap	Snap Ring
D11	5-110X	Φ23.83x34.4(59.2)	NO	Snap Ring
D12	5-103X	Φ23.83x35		Snap Ring
D13	DR170/5-170X	Φ23.83x34.95(59)	M	Snap Ring
D14	5-92X/861	Φ24.6x33.6	M	Snap Ring
D15	GUS-1	Φ25x38.8	M	Snap Ring
D16	GUN27/5-1501X	Φ25x40	Bearing Cap	Snap Ring
D17	GUMZ-7/RUJ1784	Φ25x41.2(63.8)	Bearing Cap	Snap Ring

No.	PART No.	D/mm×L/mm	Grease Nipple	Components
D18	GUMZ-7A	Φ25x41.2	M	Snap Ring
D19	RUJ-1784	Φ25x43.6 (63.8)	NO	Snap Ring
D20	40350182/KC1518RCC-1	Φ25x56.7 (79.5)	M	Snap Ring
D21	GUM88/KC1518CC-1	Φ25x76.5		Snap Ring
D22	GUT12/5-1508X	Φ26x53.35 (80.5)	B	Snap Ring
D23	GUT13	Φ25x42 (65.9)	Bearing Cap	Snap Ring
D24	GUMZ-9/5-513X	Φ26.99x52.59 (81.7)	Bearing Cap	Snap Ring
D25	GU1020N	Φ26.99x52.59 (81.7)	No	Snap Ring
D26	GU1020	Φ26.99x45.2 (72.08)	B	Snap Ring
D27	郑州皮卡	Φ27x45.2 (72.08)		Snap Ring
D28	GUN46	Φ27x46.1	NO	Snap Ring
D29	RUJ-1700	Φ27x49.02	Bearing Cap	Snap Ring
D30	5-260X	Φ27x52.57	NO	Snap Ring
D31	5-1200X	Φ27x57.4	B	Snap Ring
D32	5-1203X	Φ27x67.6 (91.9)	B	Snap Ring
D33	5-1306X-1	Φ27.4x50.88 (79)	Bearing Cap	Snap Ring
D34	5-1306X	Φ27.4x50.88 (79)	B	Snap Ring
D35	GUN29	Φ28x53	B	Snap Ring
D36	GUMZ-6	Φ28x56	B	Snap Ring
D37	5-1507X-1	Φ28x56	B/Bearing Cap	Snap Ring
D38	5-1505X	Φ28.02x52.9	B	Snap Ring
D39	5-3147X	Φ28.6x60.2 (92.2)	B	Snap Ring
D40	5-1309X	Φ28.6x63.66 (93.5)	B	Snap Ring
D41	04371-0K050/SY6480	Φ29x47.3	NO	Snap Ring
D42	GUT21/GUT23	Φ29x49	M	Snap Ring
D43	GUT17/5-1510X	Φ29x49 (76.4)	NO	Snap Ring
D44	GUT23	Φ29x49 (76.4)	M	Snap Ring
D45	GUIS52/5-1515X	Φ29x50 (75.6)	NO	Snap Ring
D46	KC1718DE/04371-BZ010	Φ29x50	NO	Snap Ring
D47	KC1818HD	Φ29x50	B	Snap Ring
D48	BJ212	Φ30x55 (88)	B	Snap Ring
D49	GUM93	Φ30x55.1	M	Snap Ring
D50	GU3710	Φ30.18x52.2	NO	Snap Ring
D51	5-297X	Φ30.18x52.58	NO	Snap Ring
D52	GUT20/5-1511X	Φ32x61 (92)	B	Snap Ring
D53	GUMZ-3	Φ32x57 (92)	M	Snap Ring
D54	GUN35	Φ32x64	B	Snap Ring
D55	KC2125C/KC3479C	Φ33.35x79 (115.6)	B	Snap Ring
D56	5-332X1374	Φ34.93x73 (106.4)	B	Snap Ring
D57	PT464	Φ34.93x70.8 (105)	B	Snap Ring
D58	GUMZ-8	Φ37x67 (104)	M	Snap Ring
D59	RUJ-4009	Φ37x71	M	Snap Ring
D60	U730/5-12213X	Φ38x56 (100.7)	M	Snap Ring
D61	LU730	Φ38x57.2 (102)	M	Snap Ring
D62	U74715-12022X	Φ42x66		Snap Ring
D63	ZK6800/5-12018X	Φ68x89	M	Snap Ring

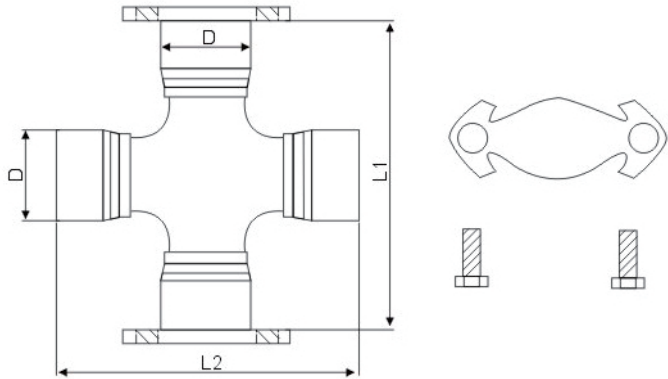
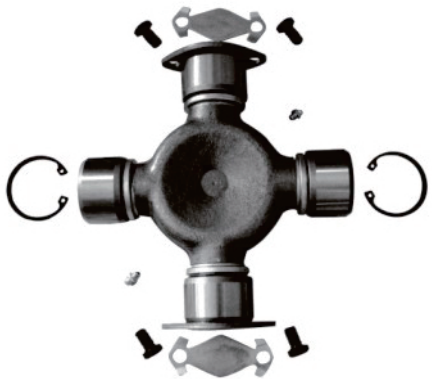


No.	PART No.	D/mm×L/mm	Grease Nipple	Components
E1	GU315	Φ15x38	No	Snap Ring
E2	U122	Φ15x40		Snap Ring
E3	EQ153转	Φ18x47	M	Snap Ring
E4	长江750	Φ19x44	No	Snap Ring
E5	LZ110/GUMZ2	Φ20x55	No	Snap Ring
E6	GUN44	Φ20.5x56.60	No	Snap Ring
E7	40350160/JX110	Φ20.5x57	B	Snap Ring
E8	GUT11/DUMP-1	Φ20x57	Bearing Cap	Snap Ring
E9	GUS-6	Φ20.07x59.80	No	Snap Ring
E10	GU1380/GUA-3	Φ22x54	M	Snap Ring
E11	AP010	Φ22x54.80	M	Snap Ring
E12	GUIS63	Φ22.06x59.60	Bearing Cap	Snap Ring
E13	GU500/HS194	Φ23.82x61.30	B	Snap Ring
E14	GU51015-101X	Φ23.82x61.30	No	Snap Ring
E15	24X72	Φ24x72	M	Snap Ring
E16	15.0023	Φ24x76	M	Snap Ring
E17	CA5350	Φ25x63		Snap Ring
E18	GUS-7	Φ25x63.80	No	Snap Ring
E19	GUMZ-1GUM81	Φ25x63.80	Bearing Cap	Snap Ring
E20	LZ111	Φ25.02x63.99	No	Snap Ring
E21	GUM8815-1516X	Φ25x76.50	M	Snap Ring
E22	GUM91	Φ25x76.50	Bearing Cap	Snap Ring
E23	UJ636	Φ25.02x76.50	M	Snap Ring
E24	GUDUMP-2	Φ25x77.00	Bearing Cap	Snap Ring
E25	GU7410	Φ26x69.80	M	Snap Ring
E26	175725060	Φ26.5x72	M	Snap Ring
E27	5-443X15-310X	Φ27x62	No/bearing Cap	Snap Ring
E28	27675	Φ27x67.5	B	Snap Ring
E29	EG30/GUA-7	Φ27.02x70.15	M	Snap Ring
E30	AP3 11	Φ27x74.50	M	Snap Ring
E31	GU1100	Φ27x74.60	B	Snap Ring
E32	EG40	Φ27x74.80	M	Snap Ring
E33	GUK12/GU1780	Φ27x80	B	Snap Ring
E34	5-278X	Φ27x81.75	B	Snap Ring
E35	5-153X/369	Φ27x81.78	B	Snap Ring
E36	GUN47	Φ27x81.78	B	Snap Ring
E37	GUN48	Φ27x81.80	B	Snap Ring
E38	5-213X	Φ27.03x92	B	Snap Ring
E39	GMP2871	Φ28x71	M	Snap Ring
E40	GUD84	Φ28.01x80.0	M	Snap Ring
E41	GUT14	Φ28.5x78	B	Snap Ring
E42	5-129X	Φ28.62x66.50	M	Snap Ring
E43	GUM86	Φ28.5x78.00	M	Snap Ring
E44	WXNO 1049#	Φ29x76.00	B	Snap Ring
E45	GUM87	Φ30x78.20	M	Snap Ring
E46	40350282	Φ30x82.00		Snap Ring
E47	GU2200	Φ30.188x92.075	B	Snap Ring
E48	AP50015548-638	Φ30.2x80	M	Snap Ring
E49	GL00205	Φ30.2x82	M	Snap Ring
E50	GU220015-178X	Φ30.188x92.075	B	Snap Ring
E51	GU200015-160X	Φ30.188x106.35	B	Snap Ring
E52	GU2050	Φ30.18x106.30	B	Snap Ring
E53	29.2069	Φ31.04x88.40	Bearing Cap	Snap Ring
E54	964/5-243X	Φ31.8x81.45	M	Snap Ring

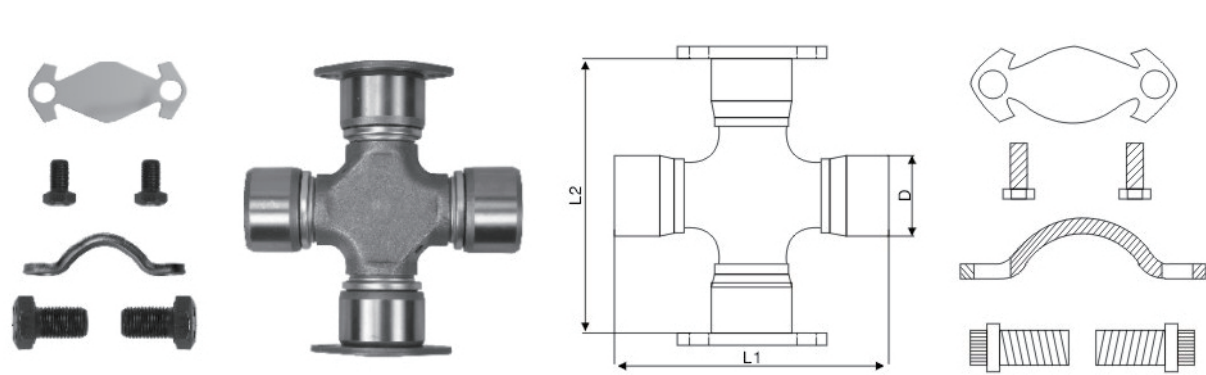
No.	PART No.	D/mm×L/mm	Grease Nipple	Components
E55	GUM75/KC2023B	φ31.75×102	B	Snap Ring
E56	KIA2.5T	φ32×90		Snap Ring
E57	GUN35M	φ32.02×91.8	M	Snap Ring
E58	BJ130	φ32×93	B	Snap Ring
E59	KC133931W/GUIS66/WF6700	φ33×93	M	Snap Ring
E60	8-97322749-0/NKR71	φ33×103	M	Snap Ring
E61	5-332X	φ34.92×71.2		Snap Ring
E62	93160221	φ34.9×94		Snap Ring
E63	SPL70	φ34.9×126		Snap Ring
E64	GUA17	φ34.93×106.3	M	Snap Ring
E65	GU2300/351/EG80	φ34.93×106.3	B	Snap Ring
E66	5-188X/8V7336	φ34.93×106.3	B	Snap Ring
E67	5-155X/5-275X	φ34.93×126.2	B	Snap Ring
E68	GUH63	φ35×99	M	Snap Ring
E69	GU7430	φ35×98	M	Snap Ring
E70	KC2226PD	φ35×98.5	B	Snap Ring
E71	TIS162/GUIS62	φ35×104	M	Snap Ring
E72	40350140	φ35.5×119.2	B	Snap Ring
E73	GUN32	φ35.5×119.2	B	Snap Ring
E74	GUH65	φ36×110.3	B	Snap Ring
E75	GUH74	φ36×115.6	B	Snap Ring
E76	MV0088/GUM82	φ38×104	M	Snap Ring
E77	5-12072X	φ57×162.9	M	Snap Ring
E78	KY3995	φ39×95	M	Snap Ring
E79	EQ140	φ39×118	B	Snap Ring
E80	GU3500	φ39.675×115.42	B	Snap Ring
E81	GUIS64	φ40×115	M	Snap Ring
E82	KC2832ADW	φ40×115	M	Snap Ring
E83	GUH160	φ40×115	M	Snap Ring
E84	5-165X/359	φ41.2×142	M	Snap Ring
E85	SPL90X/CZ271	φ41.28×126	M	Snap Ring
E86	GUIS-72	φ42×115	M	Snap Ring
E87		φ42×117.5		Snap Ring
E88	U447	φ42.12×104.5	M	Snap Ring
E89	TN141	φ43×140	M	Snap Ring
E90	CZ251	φ44×121.6	M	Snap Ring
E91	GU7460/GUH76	φ44×124.82	M	Snap Ring
E92	KC2932ADW	φ44×129	M	Snap Ring
E93	5-12276X/GU3840	φ44.1×149	B	Snap Ring
E94	KC2933DWA	φ44×126	M	Snap Ring
E95	U753/5-12100×	φ45.04×120.4		Snap Ring
E96	GU4000/GU4000NC	φ47.618×134.8	B	Snap Ring
E97	GU9730/斯太尔0017	φ48×116.40	B	Snap Ring
E98	GU7650	φ48×126	M	Snap Ring
E99	K5-A599	φ48×161	B	Snap Ring
E100	5-12062X	φ48×161	M	Snap Ring
E101	GU8110	φ50×121		Snap Ring
E102	JN162-1	φ50×135	M	Snap Ring
E103	GU3810	φ50×152.6	M	Snap Ring
E104	5-12278X	φ50×164	B	Snap Ring
E105	GU7560/0125	φ52.05×133	M	Snap Ring
E106	GU7590	φ52×133	M	Snap Ring
E107	U909/GU7600	φ52×147	M	Snap Ring
E108	GU7610	φ53×135	M	Snap Ring
E109	GU8130/0082	φ57×144	M	Snap Ring
E110	GU7630/0092	φ57×152	M	Snap Ring
E111	57164	φ57×164	M	Snap Ring
E112		φ57×172		Snap Ring
E113	玛斯525KH	φ62×149	M	Snap Ring
E114	UJ982	φ65×172		Snap Ring
E115	CZ280	φ65.04×189.86	M	Snap Ring
E116	ZK6800-1	φ68×165.5	M	Snap Ring



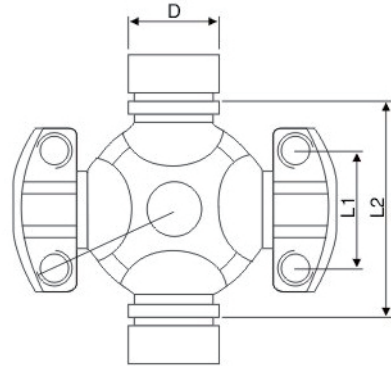
No.	D/mm × L/mm	PREC-ISION	SPICER	GKN	ALLOY	
F1	φ 39.67 × 115.42	332	5-115X			GU3000
F2	φ 47.62 × 135.00	333	5-279X	HS336	1807	GU4000
F3	φ 49.21 × 154.70	334	5-280X	HS337	1802	GU5000
F4	φ 49.20 × 178.00	376	5-407X	HS338	1808	5-504X
F5	φ 49.20 × 191.75	381	5-281X	HS334	1810	5-454X
F6	φ 55.50 × 206.00	388	5-308X			
F7	φ 58.98 × 167.58	335	5-124X			6228AGF



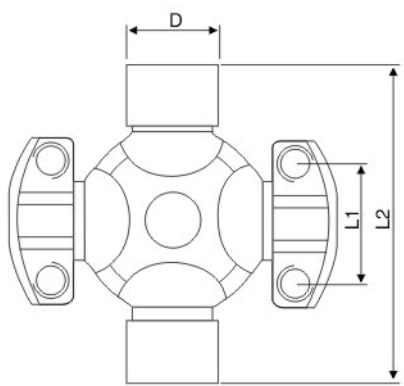
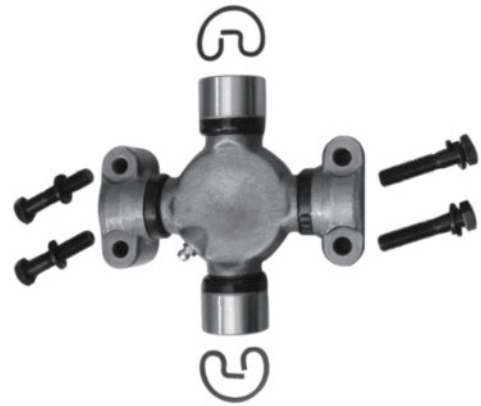
No.	D	L1	L2	CATER-PILLAR	PRE-CISION	SPICER	NEAPCO	LUBE
G1	39.67	115.42	115.60			GU3500D		
G2	47.62	135.00	134.95	7V4077	475	5-438X	4-2791	2A
G3	49.20	154.70	157.00	7V3842	476	5-515X	5-2801	2A
G4	49.20	177.98	179.98		477	5-469X	6-4071	2A
G5	49.20	191.69	194.00		478	5-510X	6-2811	2A



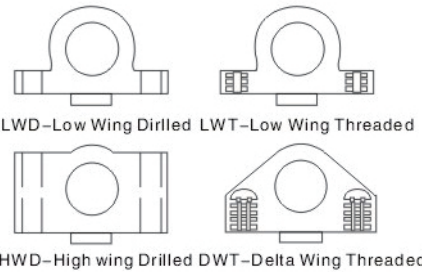
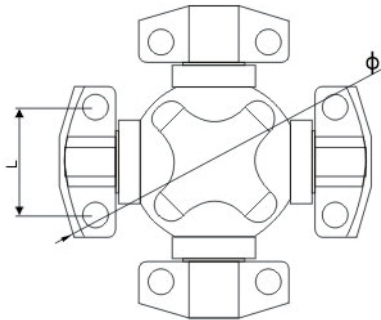
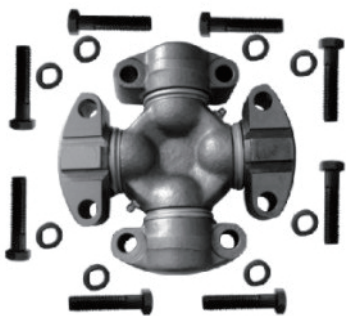
No.	SPICER	D	L1	L2	Grease Nipple
H1	5-674X	47.62	135.00	135.00	2B
H2	5-675X	49.20	157.10	154.80	2B
H3	5-676X	49.20	194.00	192.00	2B
H4	5-677X	49.20	179.98	177.98	2B



No.	D(mm)	L2(mm)	Bearing Quantity and type	CATERPILLAR	PRECISION	ROCKWELL	SPICER
	L2(mm)	φ					
I1	26.50	56.7(80)	2RND		103-12-24100		
	33.34	79.00	2HWD				
I2	25.40	54.40	2RND	2D3765	526	U2126	5-2031 ×
	33.34	79.00	2LWT				
I3	33.35	79.20	2RND	40350179	557	Cp5154	5-5015 ×
	42.88	115.00	2HWD				
I4	33.40	104.35	2RND	40350185	565	小川崎	
	42.88	140.46	2HWD				
I5	41.30	104.40	2RND	40350285	Gu7150	U8552	Mv0109
	49.20	148.38	2HWD				
I6	28.50	77.20	2RND	40350157	494	5-4016 ×	546
	36.40	108.00	2HWD				
I7	28.50	77.20	2RND	40350183	Mv0087		
	42.88	115.00	2HWD				
I8	32.00	83.89(115)	2RND	40350313	GUK030	417-20-12620	
	42.88	115.05	2HWD				
I9	33.40	109.6(142)		419-20-12621			
	42.88	140.46					
I10	28.60	60.00	2RND		531G		5-3012X
	36.40	90.40	2LWT				

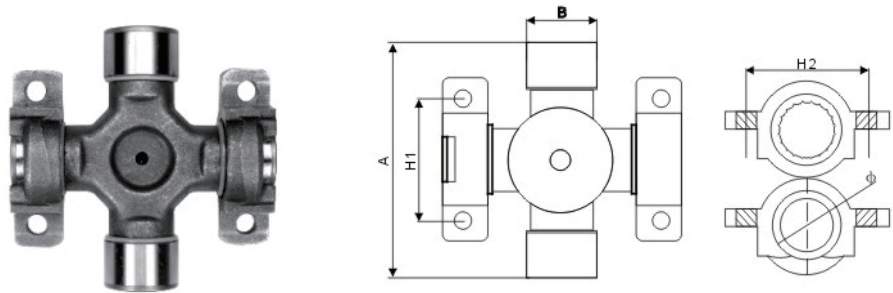


No.	D(mm)	L2(mm)	Bearing Quantity and type	CATERPILLAR	PRECISION	ROCKWELL	SPICER	Grease Nipple
	L2(mm)	φ						
J1	34.92	126.00	2RND	5Y0154	470	R221	5-221 ×	
	42.88	140.49	2HWD					
J2	34.92	126.00	2RND			R220	5-220 ×	
	42.88	140.49	2HWT					
J3	34.92	106.00						
	42.88	114.60						
J4	52.37	174.70	2RND				Cp20	M10*1*70双头
	71.30	179.20	2HWD					
J5	52.37	208.30	2RND				Cp25	M10*1*70双头
	71.30	212.00	2HWD					

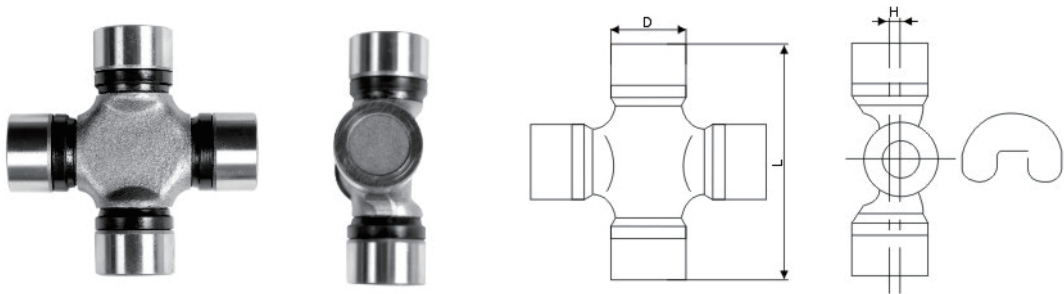


No.	L(mm)	φ (mm)	Bearing Quantity and type	CATERPILLAR	ALLOY	GKN	ROCKWELL	SPICER
K1	33.34	79.00	4LWT	1250		HS520	951	5-2002 ×
K2	33.34	79.00	4LWD	316117	40350083	HS521	994	5-2117 ×
K3	33.34	79.00	2LWT,2LWD	6S6902	1063	HS522	952	5-2116X
K4	36.40	90.40	4LWT	5D9153	1711	HS530	536	5-3000 ×
K5	36.40	90.40	2LWT,2LWD	9K1976		HS532	535	5-3014 ×
K6	36.40	108.00	4HWD	5V1168	1689	HS545	969	5-4143X
K7	36.40	108.00	4LWT	6F7160	1703	HS540	540/921	5-4002X
K8	36.40	108.00	4LWD	4905112				
K9	36.40	108.00	2LWT,2LWD	6H1262	1704	HS542	541	5-4123X
K10	36.40	108.00	2LWD,2HWD	40350181				

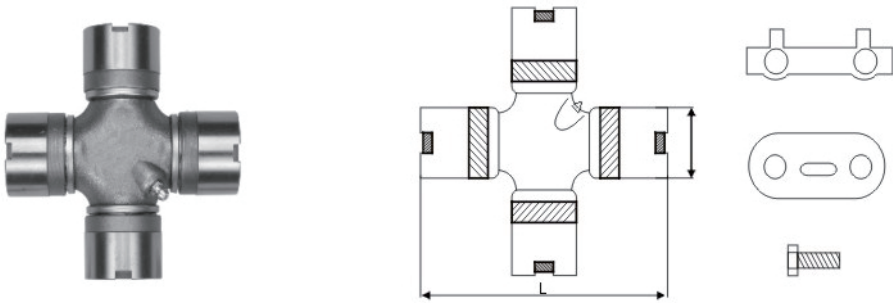
No.	L(mm)	φ (mm)	Bearing Quantity and type	CATERPILLAR	ALLOY	GKN	ROCKWELL	SPICER
K11	36.40	108.00	2LWT,2HWD	5M0800	J4130	HS543	929	5-4140 ×
K12	42.88	115.00	4HWD	2K3631/8D0537	1728/CZ115	HS555	968	5-5177 ×
K13	42.88	115.00	4LWT	7J5251/40350092	1720	HS550	550	5-5000 ×
K14	42.88	115.00	2LWT,2LWD	7J5245	1721	HS552	552	5-5121 ×
K15	42.88	115.00	2LWT,2HWD		1722	HS553	933	5-5173 ×
K16	42.88	115.00	2LWD,2HWD	40350012				
K17	49.20	130.00	4HWD	114-7295				Dx8006
K18	42.88	140.49	2LWT,2HWD		1822	HS563	563	5-6102 ×
K19	42.88	140.49	4LWT		1820	HS560	560	5-6000 ×
K20	42.80	140.49	4HWD	1S9670/7K3526	1826	HS565	905	5-6106 ×
K21	42.80	140.49	4HWD	145-14-00190				
K22	49.22	148.38	4HWD	6H2577/8K6042	1840	HS575	927	5-7105 ×
K23	49.22	148.38	4HWD	144.10.12620				
K24	49.22	148.38	4LWT	8F7719/GUIS60	1841	HS570	570	5-7000 ×
K25	49.22	148.38	2LWT,2HWD	7J5242	1843	HS573	574	5-7202 ×
K26	49.22	206.00	4LWT	40350159	1851	HS580	581	5-8200 ×
K27	49.20	206.00	4HWD	6H2579/WS16S	1850	HS585	928	5-8105X
K28	56.00	173.90	4LWT	GUIS67	187			
K29	71.40	165.00	4HWD	2V7153	Ct53	HS685	963	5-8516X
K30	71.40	165.00	4DWT	7K0442	Ct42	HS680	785	5-8500 ×
K31	71.40	209.00	4HWD	9V7710/7H3958	1868/5-9001X	HS595	911	5-9016 ×
K32	71.40	209.00	4DWT					5-9000 ×
K33	92.00	212.60	4HWD	8P8132		HS605	988	
K34	88.90	222.25	4HWD				490	
K35			2LWD,2HWD	40350012			558	



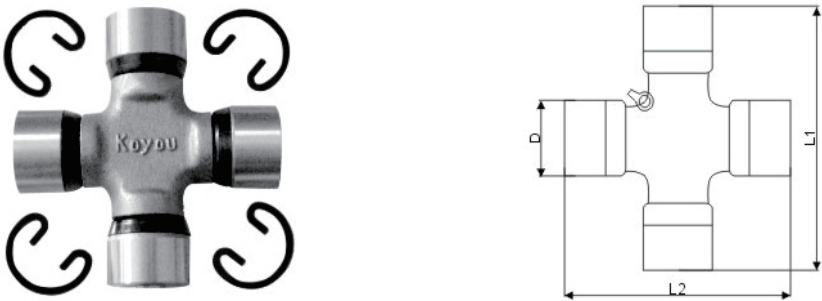
No.	PART No.	A	B	H1	H2	φ	φ 1
L1	U950	161.00	48.08	84.50	131.00	65.00	13.00
L2	U954	164.00	57.00	95.00	126.00		13.00



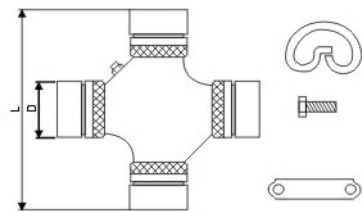
No.	PART No.	D×L×H (mm)	GreaseNipple	Components
M1	32B27P5	φ 27 × 81.8 × 4	NO	Snap Ring
M2	511005	φ 35 × 96		



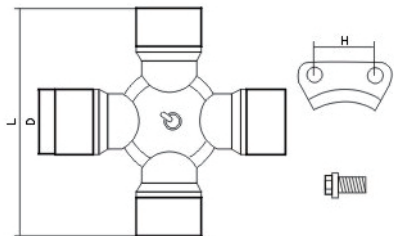
No.	PART No.	D	L	GreaseNipple	Components
N1	04371-55020/GUT16	40	118	B	Lock Kits & Bolt



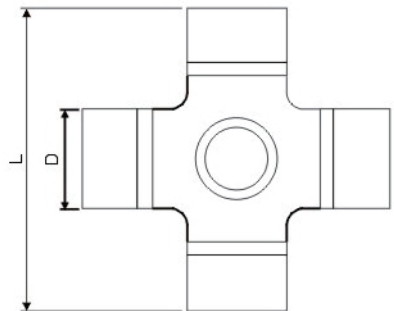
No.	PART No.	D	L1	L2
O1	279282/5-134 × 353	27	92	81.78



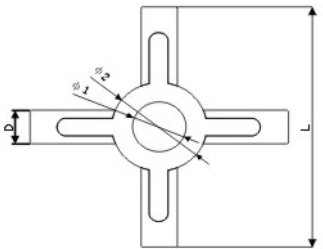
No.	PART No.	D	L	Components
P1	8V6435	34.90	126.20	Lock Kits & Bolt



No.	PART No.	D	L	H	Components
Q1	SPL140X	49.20	138.80	32.00	Lock Kits & Bolt
Q2	SPL170X	55.00	164.00	32.00	Lock Kits & Bolt
Q3	SPL250X	60.00	163.00	32.00	Lock Kits & Bolt

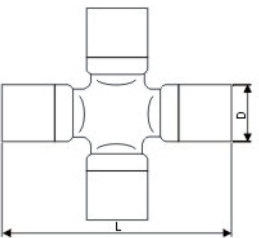


No.	PART No.	D	L
R1	U728/4-1	24.00	74.00
R2	U728/3	24.00	74.65
R3	U728/4=K5-A557	24.06	74.00
R4	19.0484	24.06	76.00
R5	U728/1	24.06	76.00
R6	Gu2775	27.00	75.00
R7		28.00	75.50



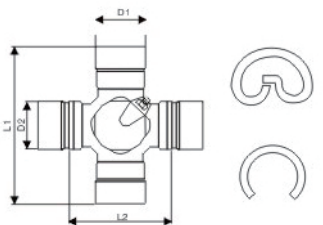
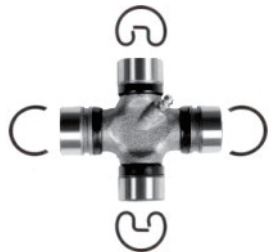
※ PART NAME:differential spider

No.	PART No.	D	L	Φ1	Φ2
S1	87302	18.00	130.40	27.50	46.50
S2	36020	22.00	150.70	25.80	54.80
S3	FMC802	22.00	149.50	30.00	61.20
S4	差速器	20.00	120.00	28.00	
S5	差速器	30.00	211.00	55.00	94.50
S6	差速器2	22.00	155.50	45.00	80.00
S7		25.50	175.00		
S8	41371-1080	32.00	215.50	43.00	85.00
S9	DKK3415/MC-804837	35.00	209.00	55.00	90.00

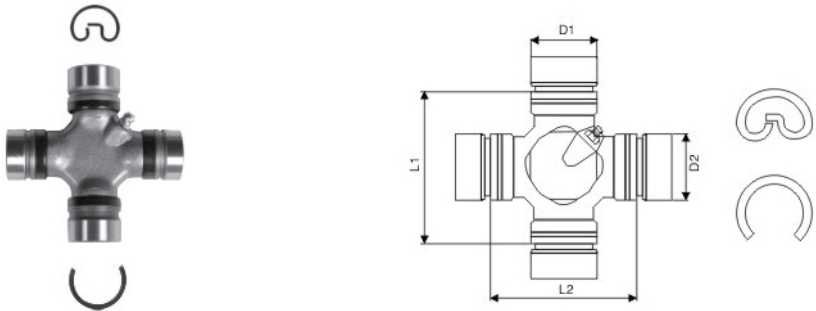


※ STEERING JOINT

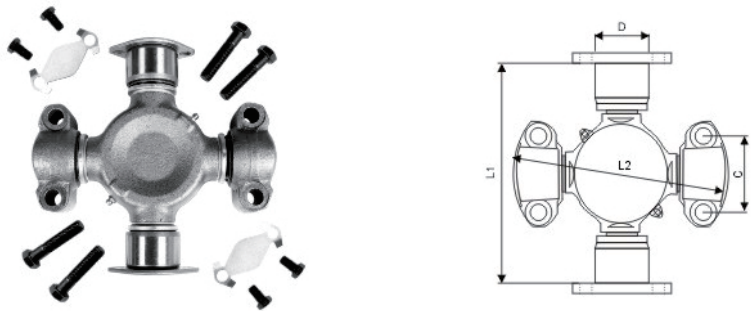
No.	PART No.	D m/m	L m/m
T1	ST-1538	15	38
T2	ST-1540	15	40
T3	ST-1638	16	38
T4	ST-1640	16	40
T5	ST-1848	18	48
T6	ST-1948	19	48
T7	25.0045	24	62
T8	ST-2463	24	63



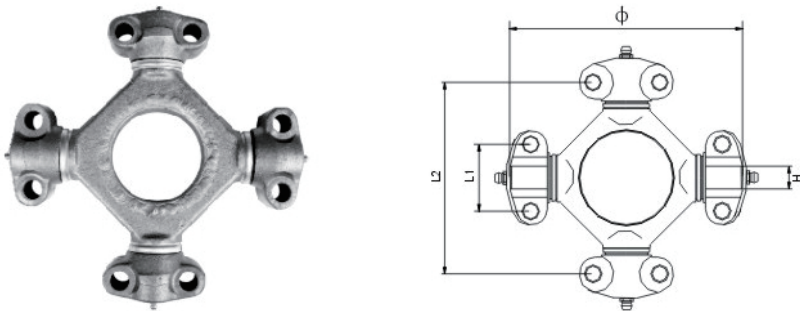
No.	D1×L1/D2×L2	PART NO.	GREASE NIPPLE	COMPONENTS
U1	27 × 91.94/28.6 × 60.2	5-212X	B	2内2外
U2	27 × 81.80/28.6 × 60.2	5-3022X	B	2内2外
U3	27 × 81.80/27.4 × 50.8	5-353X	B	2内2外
U4	27 × 81.78/27 × 56	445	B	2内2外
U5	28.6 × 92/27 × 67.3	5-1204X	B	2内2外



No.	PART NO.	D1	L1	D2	L2	GREASE NIPPLE	COMPONENTS
V1	5-3022X-1	28.6	60.12	27	57	B	2外, 2内各2片
V2	5-353X-1	27.4	50.88	27	56.8	B	4内4外

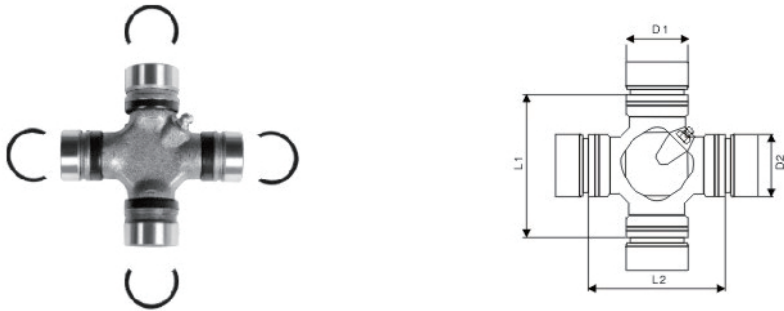


No.	Spicer	Precision	C	D	L1	L2
W1	5-324X	480	71.40	49.195	191.98	209.30



NO.	PART NO.	L1	L2	H	Φ
X1	TY220/P85	50	181	16.1	207

NO.	PART NO.	DxL	Grease Nipple	COMPONENTS
Y1	CZ117	Φ27x70.1	NO	Snap Ring
Y2	CZ116	Φ30x82.5	NO	Snap Ring
Y3	CZ186	Φ30.196x82.2	NO	Snap Ring
Y4	CZ185	Φ35x97.5	NO	Snap Ring



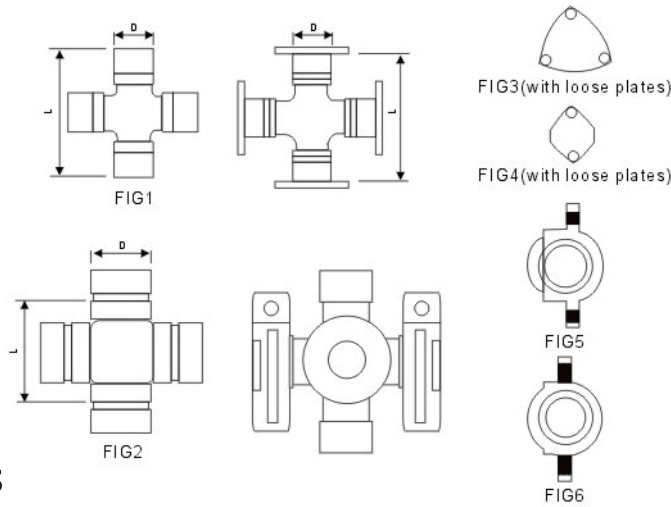
No.	D1xL1/D2xL2	Precision	Grease Nipple	COMPONENTS
Z1	27x67.5/28.6x64	362	B	4内卡
Z2	28.6x55.5/27x55.5	5-1201X	B	4内卡

※KOMATSU

GMB NO.	ORIGINAL NO.	FIG.	KOYO NO.	L m/m	Φ m/m
GUKO-1	101-10-17100	M	BAU020027	33.32	79.22
GUKO-2	101-10-17200	M	BAU020022	33.32	79.22
GUKO-4	111-10-16110	M	BAU040011B	36.40	107.98
GUKO-5	131-10-46110	M	BAM050001C	42.88	115.05
GUKO-6	135-14-00030	M		42.88	140.45
GUKO-8	175-20-00060	M	BAM085001F	71.44	165.01
GUKO-12	111-60-11110	M	BAM020035	33.32	79.22
GUKO-13	154-66-12100	E	BAM050001C	(D)23.82	(L)61.3
GUKO-14	380-135764-1	M	BAU040011B	50.10	208
GUKO-15	380-136142-1	M	BAU070001C	49.20	148.38
GUKO-16	380-154073-1	E	UJK35106	(D)38.91	(L)109.4
GUKO-17	380-154081-1	E		(D)30.18	(L)92.05
GUKO-18	380-890373-1	M	BAU050001C	42.88	115.05
GUKO-19	381-881908-1	M		42.88	115.05
GUKO-20	381-972625-1	M	BAU040011D	36.40	107.98
GUKO-21	381-976907-1	M	BAU060011D	42.88	140.45
GUKO-22	381-976908-1	M		42.88	140.45
GUKO-23	381-985204-1	M		36.40	107.98
GUKO-25	385-10178551	M		36.40	107.98
GUKO-26	385-10178571	M		42.88	140.45
GUKO-27	385-10193741	M		49.20	148.38
GUKO-28	385-10238601	M		42.88	140.45
GUKO-30	417-20-12620				

※TCM

GMB NO.	ORIGINAL NO.	FIG.	KOYO NO.	L m/m	Φ m/m
GUTC-4	26113-38001	M		36.40	107.98
GUTC-5	93984-41300	M		42.88	115.05
GUTC-6	29003-37221	M		42.88	140.45
GUTC-7	93984-03600	M		49.20	148.38
GUTC-8	93950-14000	M		36.40	107.98



※FOR MERCEDES

GKN NO.	FIG	SIZE	SERIES	MERCEDES	ORIGINAL NO.
HS446	2	Φ 28x49		1004100131	1123500028
				1114100031	1804 100331
HS222	1	Φ 35x96.8	U730	0304100431	0304 101831
HS480	2	Φ 38x57(100)		3024100031	3124 111331
				3104100031	3224 110031
				3124000231	3224 110131
				3854100231	
HS236	1	Φ 38.03 x105.6		0304102031	
HS486	2	Φ 42x66.4		3174100131	3374 110031
				3374010031	3544 100131
				3374100031	3854 100131
				3374105031	
HS259	1	Φ 45x118.1		0304102231	
HS260	1	Φ 45x 120.4		004100031	3044 100031
			286.33	3174100031	
HS272	1	Φ 48.05x125.8		3604100232	3614 100231
				3604100231	3854 100531
				3814100031	3854 100731
				3814100231	3874 100131
			587.30	3854100031	
HS282	1	Φ 52.1x133	186.37	3354100031	
HS284	1	Φ 53x 135		3634100631	3634 100031
			587.42	6204100131	
HS289	1	Φ 57.07x152		3874100031	7186420617000

※FOR VOLVO

GKN NO.	FIG	SIZE	SERIES	MERCEDES	ORIGINAL NO.
HS194	1	Φ 23.82x61.3	1110	1217606	656762
				659773	87977
HS150	1	Φ 23.82x61.3	1110	762037	
HS195	1	Φ 27x74.6	1300	348472	38403
HS166	1	Φ 27x81.78	1310	231136	231179
				231189	231311
HS179	1	Φ 30.18x106.3	1410	6652586	38464
HS176	1	Φ 39.675x 115.42	1510	6852612	6638385
				189499	6621656
				83453	36590
HS380	3	Φ 44x 136	0300	232458	231626
				7231265	
HS316	4	Φ 47.65x135	1600	46240	6621920
HS317	4	Φ 49.195x154.76	1700	231009	
HS381	3	Φ 50x152.6	287.40	2331519	232459
				1651032	
HS288	1	Φ 57.07x144	587.35	232540	
HS289	3	Φ 57.07x152	587.42	1651229	93192570
HS3800	3	Φ 44x127.5		2324580	

※FOR SCANIA

GKN NO.	FIG	SIZE	SERIES	MERCEDES	ORIGINAL NO.
HS239S	5	Φ 38x148		294380	
HS239T	6	Φ 38x148		337058	
HS244	1	Φ 39x127		169144	750614
				550614	
HS176	1	Φ 39.175x115.42	1500	750610	77187
HS380	3	Φ 44x126	0300	550613	750602
(178258) HS257	1	Φ 44x149		178258	264043
HS268T	6	Φ 48.05x161	284.40	337059	365901
HS381	3	Φ 50x152.6		550613	750613
Hs280	1	Φ 50x164		207563	264044
(294385)	1	Φ 57x161		294385	
HS292S	5	Φ 57x164	366437	294385	366441
HS292T	6	Φ 57x164		337060	366437

※TOYOTA IDENTIFICATION AND WEIGHT LIST

GMB NO.	ORIGINAL NO.	KOYO NO.	MATSUBA NO.	DMM	OMM	LMM	NET WEIGHT	GROSS WEIGHT
GUT-11	04371-10011	T2057	UJ212	20.00	-	57.00	180	250
GUT-12	04371-30011	T2680CC	UJ210	26.00	53.35	-	410	480
GUT-13	04371-20010	T2667A	UJ211(221)	26.00	42.00	-	380	450
GUT-14	04371-60010	T2978A	UJ216	28.50	-	77.90	515	590
GUT-15	04371-55011	T34107	UJ215	34.00	-	107.00	960	1,120
GUT-16	04371-55020	T40119	UJ230	39.98	-	118.00	1,800	2,080
GUT-17	04371-30020	T2977	UJ234	29.00	49.00	-	515	590
GUT-20	04371-36021	T3292		32.00	61.00	-	670	760
GUT-21	04371-35020	T2977		29.00	49.00	-	515	590
GUT-22	04371-55021			40.00	-	118.00	1,850	2,100
GUT-23	04371-35030			29.00	49.00	-	515	590
GUT-24				22.06	-	57.50	230	280

※NISSAN

GMB NO.	ORIGINAL NO.	KOYO NO.	MATSUBA NO.	DMM	OMM	LMM	NET WEIGHT	GROSS WEIGHT
GUT-26	37125-11975	N2461A	UJ110	23.82	-	61.30	275	340
GUT-27	37125-14627	N25631	UJ111	25.00	40.00	-	275	340
GUT-28	37125-18025	N2057	UJ112	20.01	35.00	-	180	250
GUT-29	39625-21025	N2880A	UJ114	28.00	53.00	-	490	560
GUT-30	37125-85461	N3092	UJ115	30.17	-	90.10	670	770
GUT-31	37125-50001	N3211	UJ116	32.00	-	107.00	1,010	1,130
GUT-32	37125-58026	N36119	UJ117	35.50	-	119.20	1,320	1,450
GUT-33	37125-99901	ND43128B	UJ119	43.00	-	128.00	1,400	1,570
GUT-34	37125-76025	N2580	UJ113	25.01	52.00	-	350	420
GUT-36	23020-4101(65109)	NP2578	UJ120	25.00	-	77.60	500	570
GUT-41	37125-90128	ND43142	UJ125	43.00	-	135.50	2,350	2,600
GUT-42	37125-99900	ND40124	UJ118	40.01	-	123.80	1,555	1,750
GUT-43	37125-90027	ND55168B	UJ126	55.01	-	163.80	3,950	4,150
GUT-44	37000-H8500		UJ124	20.50	-	56.60	195	290
GUT-45	37126-01G25			20.07	-	52.40	200	240
GUT-46	37125-25025			27.00	46.10	-	430	500
GUT-47				27.00	-	81.75		

※MAZDA

GMB NO.	ORIGINAL NO.	KOYO NO.	MATSUBA NO.	D M/M	O M/M	L M/M	NET WEIGHT	GROSS WEIGHT
GUMA-1(5)	0136-25-060	TM2564C	UJ411	25.00	-	63.80	275	340
GUMA-2	0180-25-060	TM2055B	UJ412	20.02	-	54.60	180	230
GUMA-3(4)	0164-25-060	TM3293	UJ414	32.00	57.00	-	500	570
GUMA-6	0706-89-251	TM2880	UJ415	28.00	56.00	-	800	910
GUMA-7	0259-25-060	TM2564B~E	UJ413	25.00	41.20	-	280	350
GUMA-8	0727-25-060	TM37104	UJ416	37.00	-	104.00	1,230	1,410
GUMA-9	1757-89-251		UJ417	26.50	48.00	-	420	500
GUMA-10	3919-89-251		UJ418	22.50	35.00	-	240	310

※MITSUBISHI

GMB NO.	ORIGINAL NO.	KOYO NO.	MATSUBA NO.	D M/M	O M/M	L M/M	NET WEIGHT	GROSS WEIGHT
GUM-71	14501-27000	M44135A	UJ611	44.00	-	129.00	2,500	2,900
GUM-72	13518-22000	M36104	UJ613	36.00	-	104.00	1,000	1,100
GUM-73	GPW18397	S2782	UJ620	27.00	-	81.75	480	540
GUM-76	13018-21200	M2578A	UJ614	25.01	-	77.80	500	570
GUM-77	ST-0008	S2765	UJ617	27.00	-	65.30	470	540
GUM-78	ST-0003		UJ619	25.00	-	63.80	275	340
GUM-79	ST-0024	M2564	UJ616	25.00	-	63.80	275	340
GUM-80	12018-01110	M46142	UJ612	46.00	-	142.00	2,300	2,650
GUM-81	MB-000345	S2765	UJ625	25.00	-	63.80	275	340
GUM-82	13501-11010	M38104	UJ624	38.00	-	104.00	1,320	1,500
GUM-83	12019-10000		UJ626(638)	52.00	-	152.80	3,950	4,300
GUM-84	18433-51700		UJ623	26.00	-	68.00	310	380
GUM-85	MB000300			22.06	-	62.00	250	320
GUM-86	MT047756	M2978A	UJ615	28.50	-	77.90	500	570
GUM-87	MB000119		UJ627	30.00	-	78.20	560	620
GUM-88	MB000776(000823)	KC1518C	UJ636	25.00	-	76.50	405	450
GUM-90	14801-06001	M46148	UJ629	46.00	-	148.00	2,300	2,650
GUM-91	MB000948	M2576		25.00	-	76.50	500	570
GUM-92	MB000697			20.02	-	54.60	180	230
GUM-93	MB000267	S32102A	UJ10197	30.00	55.10	-	600	650

※ISUZU

GMB NO.	ORIGINAL NO.	KOYO NO.	MATSUBA NO.	D M/M	O M/M	L M/M	NET WEIGHT	GROSS WEIGHT
GUIS-51	9-37300-017-0	12461	UJ313(323)	23.82	-	61.30	285	350
GUIS-52	9-37300-065-0	12976	UJ314(324)	29.00	50.00	-	500	570
GUIS-54	9-37300-055-0	136101	UJ311	36.00	-	97.00	1,260	1,360
GUIS-55	9-37300-150-0	142129A	UJ320	42.00	-	125.00	1,520	1,810
GUIS-56	9-37300-609-0	12461	UJ313	23.82	-	61.30	285	350
GUIS-27	9-37300-163-0	148149	UJ321	48.00	-	145.00	2,500	2,700
GUIS-58	9-37300-112-0	136101AR	UJ312	36.00	-	97.00	1,290	1,390
GUIS-59	44135-060		UJ315	20.50	-	56.60	195	290
GUIS-60	9-37300-139-0	070004AR-1	UJ339	(R)49.20		(P)148.38	3,100	3,400
GUIS-61	9-37300-031-0	12461	UJ313	23.82	-	61.30	285	350
GUIS-62	1-37300-013-0	1351041	UJ332	35.00	-	103.92	1,100	1,320
GUIS-63	9-42072-321-0			22.06	-	59.60	230	280
GUIS-64	1-37300-047-0			40.00	-	115.00	1,500	1,700
GUIS-65	1-37300-004-0	146142WS	UJ340	45.98	-	136.00	2,200	2,600
GUIS-66	5-37300-032-0	133931W	UJ325	33.00	-	93.00	800	910
GUIS-67	1-37300-049-0			(R)56.00	-	(P)173.90	3,850	3,960

※HONDA

GMB NO.	ORIGINAL NO.	KOYO NO.	MATSUBA NO.	D M/M	O M/M	L M/M	NET WEIGHT	GROSS WEIGHT
GUHO-2	40150-567-003	HD2564LS	UJ811(821)	25.00	-	64.00	280	345
GUHO-3	44330-538-004	HD2265C	UJ810	22.00	-	65.00	240	305

※HINO

GMB NO.	ORIGINAL NO.	KOYO NO.	MATSUBA NO.	D M/M	O M/M	L M/M	NET WEIGHT	GROSS WEIGHT
GUH-61	9-953-3401-01	H47124	UJ511	47.00	-	124.00	2,000	2,250
GUH-62	3-302-3403-01	H47138	UJ512	47.00	-	138.00	2,200	2,400
GUH-63	3-331-3403-01	H3599A	UJ514	35.01	-	99.00	1,260	1,360
GUH-64	3-302-3403-06	H50159B	UJ513	50.00	-	159.00	3,150	3,500
GUH-65	3-445-3403-04	H36110	UJ516	36.00	-	110.30	1,250	1,450
GUH-66	6041-8409-00	H2466A	UJ515	23.82	-	65.95	295	380
GUH-67	3301-3403-01			(R)49.20	-	(P)148.38	3,100	3,400
GUH-68	04037-4008		UJ517	47.00	-	144.00	2,300	2,500
GUH-69	45220-1060			20.00	-	58.00	200	250
GUH-70	37401-1061		UJ519	47.00	-	138.00	2,200	2,400
GUH-71	37401-1010			47.00	-	144.00	2,300	2,500
GUH-72	37401-1080			47.00	-	144.00	2,300	2,500
GUH-73	37401-1021		UJ518	50.00	-	165.00	3,300	3,650
GUH-74	37401-1100			36.00	-	115.60	1,300	1,500

※DAIHATSU

GMB NO.	ORIGINAL NO.	KOYO NO.	MATSUBA NO.	D M/M	O M/M	L M/M	NET WEIGHT	GROSS WEIGHT
GUD-81	4141-4120	D2880	UJ218	20.02	-	54.60	180	250
GUD-82	4610-4120		UJ220(225)	28.00	-	80.00	510	580
GUD-83	4123-4120	D2880A	UJ219	25.00	-	63.80	275	340
GUD-84	04371-87301	D2992		28.00	-	80.00	500	590
GUD-85	04371-87302		UJ235	28.57	60.10	-	610	720
GUD-86	04371-87501			20.02	-	54.60	180	230
GUD-87	04731-87303			28.00	-	80.00	500	590
GUD-88	04371-87503		UJ226	22.50	34.90		240	310
GUD-89	04371-87304			30.00	55.10	-	600	650

※SUZUKI

GMB NO.	ORIGINAL NO.	KOYO NO.	MATSUBA NO.	D M/M	O M/M	L M/M	NET WEIGHT	GROSS WEIGHT
GUS-1	27200-58833	SZ2564TR	UJ700(710)	25.00	38.80	-	275	340
GUS-2	27100-67000			20.01	35.00	-	180	250
GUS-6	27200-60511			20.07	-	59.80	200	240
GUS-7	27200-83010			25.00	-	63.80	270	340

※SUBARU

GMB NO.	ORIGINAL NO.	KOYO NO.	MATSUBA NO.	D M/M	O M/M	L M/M	NET WEIGHT	GROSS WEIGHT
GUSR-2	6234-00020	F2064	UJ150	23.00	44.60	-	280	350
GUSR-3	6232-43000		UJ114	28.00	52.60	-	470	570
GUSR-4	6220-32000		UJ111	25.10	40.00	-	300	360

※OTHERS

GMB NO.	ORIGINAL NO.	KOYO NO.	MATSUBA NO.	D M/M	O M/M	L M/M	NET WEIGHT	GROSS WEIGHT
GUDUMP-1	KAWANISHI(S)	HM2058	UJ912	20.00	-	57.50	180	250
GUDUMP-2	KAWANISHI(L)	HM2577F1	UJ911	25.00	-	77.00	300	370
GUDUMP-3	KONGO		UJ910	22.00	-	62.00	270	340

