

COUPLINGS

Company Coupling Catalog



HUADING

HUADING

HUADING

Jingjiang Huading Machinery Manufacturing Co., Ltd

+ 8615996030208

aya@hdcoupling.com

www.huadingmachine.com/

Add: No.96 Xingye Road, Chengnan Park, Jingjiang City, Jiangsu Province, China

Jingjiang Huading Machinery Manufacturing Co., Ltd

ABOUT US

Jingjiang Huading Machinery Manufacturing Co., LTD, Established in July 2008, is a science and technology-based company specialized in designing and manufacturing transmission parts and all kinds of auxiliary non-standard equipment and accessories.

Our Chinese state-owned steel mills customers: several subsidiaries of Baosteel Group, several subsidiaries of Pangang Group Company Limited, several subsidiaries of HBIS Group Co.,Ltd, and several subsidiaries of Shougang Group.

Main products: all kinds of couplings, rolls, shafts, wear resistant and high temperature resistant products, non-standard customized wearing parts and customized parts and components.



TABLE OF CONTENTS

SWC/SWP

Cross shaft universal coupling1-2

SERIES DS

Curved Tooth Drum Coupling3-4

Drum gear coupling5-6

SERIES JM

Diaphragm couplings7-10

SERIES LT

Flexible Sleeve Column Pin Coupling11-12

SERIES JS

Snake spring coupling13-14

Elastic plum coupling15-16

SERIES UL

Tyre coupling17-18

SERIES XL

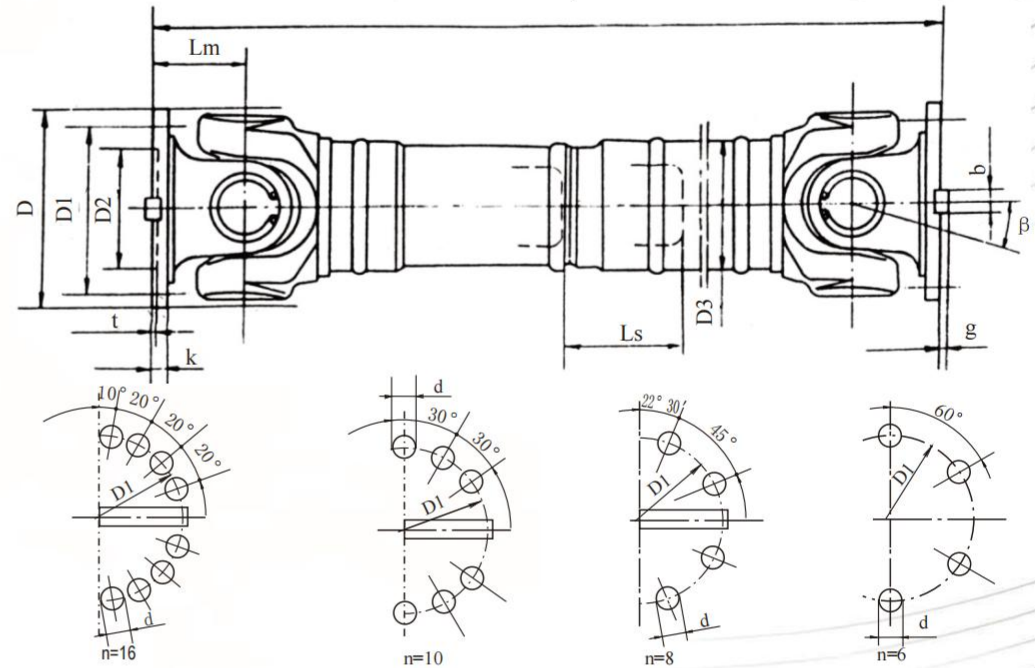
Jaw coupling19-20

Other Services21-22

Cross shaft universal coupling



standard welded shaft design universal coupling with length compensation



Product Introduction

Type SWC & SWP Universal Couplings can be used to transmit torque in metallurgy, hoisting, engineering transportation, mining, petroleum, ship, coal industry, rubber, paper making machines and heavy machinery industry. They are suitable for heavy machinery shafting transmission.

Features

-  Stable and reliable operation
-  Safe and reliable
-  Compact and reasonable structure
-  With large angle compensation capability
-  High transmission efficiency
-  Large carrying capacity

Curved Tooth Drum Coupling



Product Introduction

The drum coupling, model DC, see Fig.1, is a novel flexible gear coupling, and is especially recommended for installation in drum drives in cranes. The coupling is also suitable for that similar mechanical equipment which is able to transmit torque and subject to radial load but cannot withstand axial load.

Introduction to curved tooth drum coupling

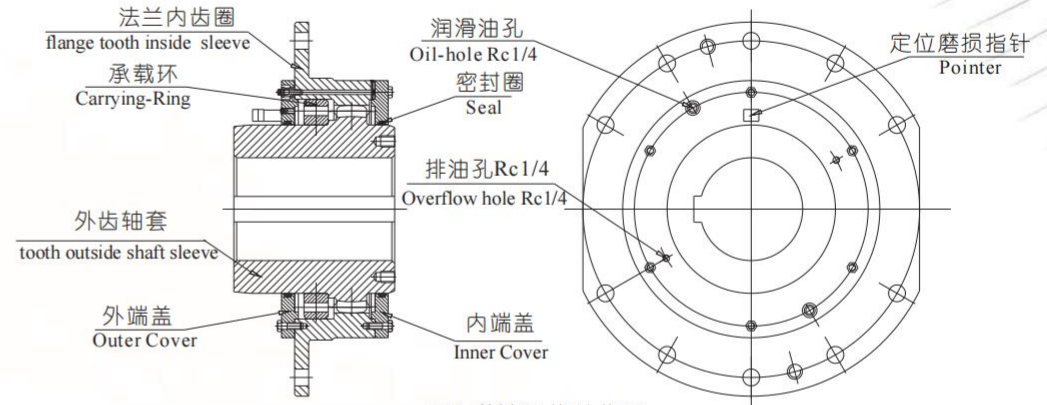


图1 联轴器的结构图
Figure1 Configuration of the coupling

Features

- Stable and reliable operation
- Safe and reliable
- Compact and strong structure
- Equipped with ordinary shaft extension reducer
- Good positioning performance
- Easy installation

Curved Tooth Drum Coupling

The drum coupling comprises: the hub with crowned spur gear teeth, the flanged housing with internal gear teeth, the load carrying ring with outer sphere, the end covers and seals, also pointer, lubrication hole and breather hole etc.

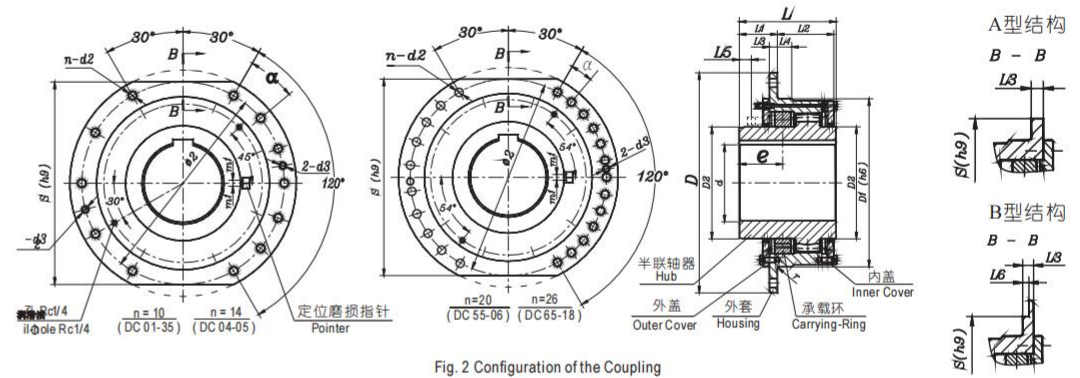
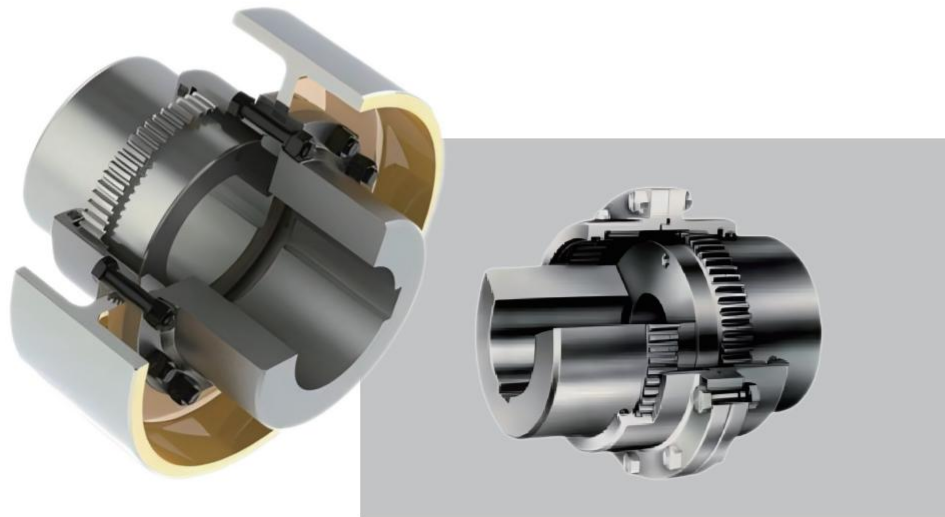


Fig. 2 Configuration of the Coupling



Series

Curved Tooth coupling consists of the hub with external Curved along teeth length direction teeth and the flanged internal gearing with the same number of teeth. It is used for coupling and transmission of synchronized rotation and torque between two coaxial shafts with a certain radial and angular misalignment

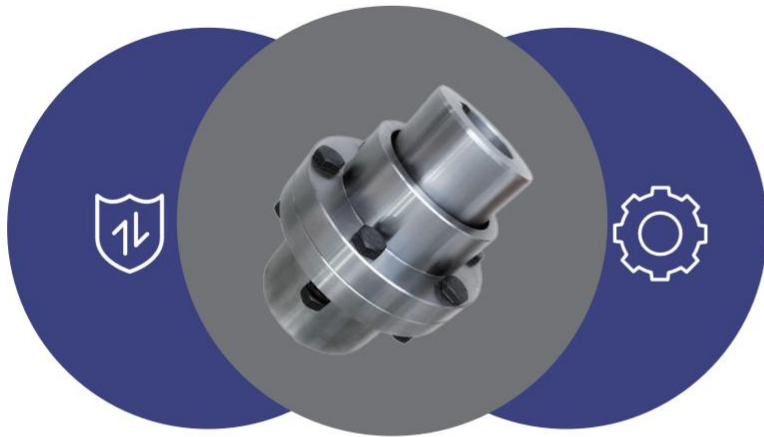
“
HUADING

Couplings

Curved Tooth
Coupling



Drum type gear coupling



 <p>Lightweight</p>	 <p>Small moment of inertia</p>	 <p>Spherical surface is easy to install</p>	 <p>Long working life</p>
--	--	--	--

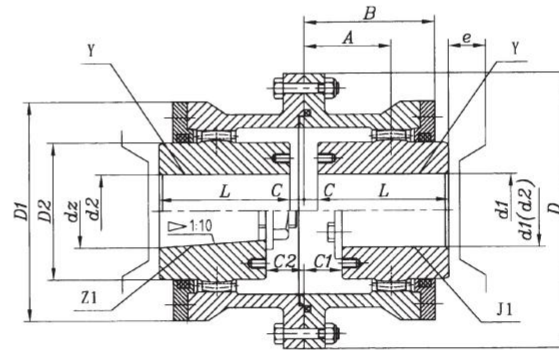


Can be used as a substitute for big brands !

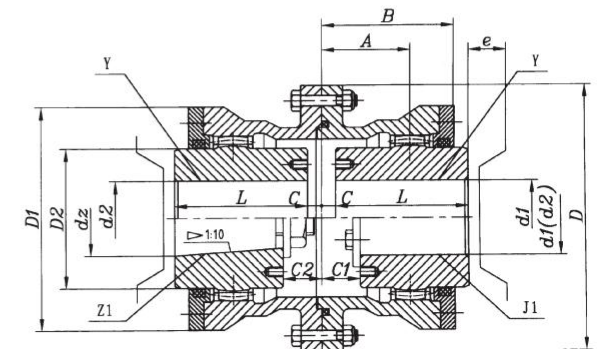
Product Introduction

The Curved Tooth coupling by our company has the advantages such as high load capacity, high wear-resistance, low noise level, long service life, and simple maintenance resulted from using high quality alloy steel forging stocks, rational teeth hardening process and perfect lubrication design.

Structural type of basic drum gear coupling

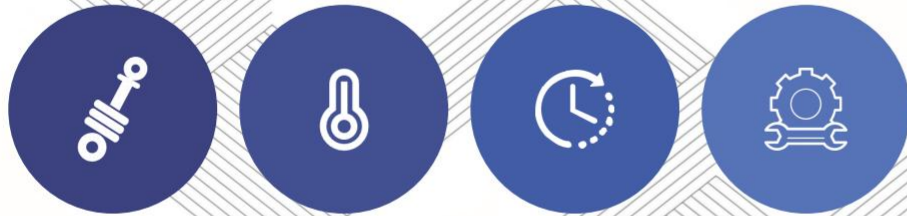


GICL1 - GICL14



GICL15 - GICL30

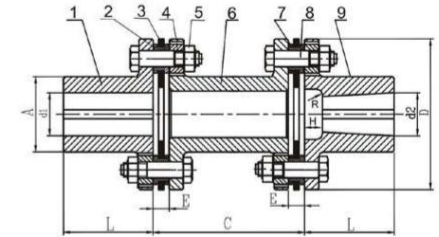
Diaphragm couplin



Structure of diaphragm coupling



Structure for Type JM1J Diaphragm couplings



1.haft-coupling 2.clamp 3.diaphragm 4.washers 5.nut 6.intermediary shaft 7.clamp ring 8.bolt 9. haft-coupling

Product Introduction

Diaphragm coupling is a high-performance metal elastic element flexible coupling that relies on the elastic deformation of the diaphragm to compensate for the relative displacement of the two connected shafts.



Features

- 1 It has obvious shock absorption effect, no noise and no wear.
- 2 It can adapt to work in high temperature (-80+300) and harsh environment, and can operate safely under shock and vibration conditions.
- 3 The transmission efficiency is high, up to 99.86%, and is particularly suitable for medium and high speed high power transmission.
- 4 Simple structure, light weight, small size, easy to install and disassemble. It can be installed and disassembled without moving the machine (referring to the type with intermediate shaft), and no lubrication is required.

HUADING

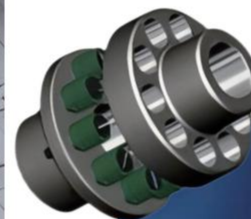
Series

The clearance between the single row sleeve and the round hole on the flange of the half-coupling and the deformation of the elastic sleeve ensures the coupling has a certain compensation of the two relative deflections and vibration damping performance.

“
HUADING

Couplings

Curved Tooth
Coupling



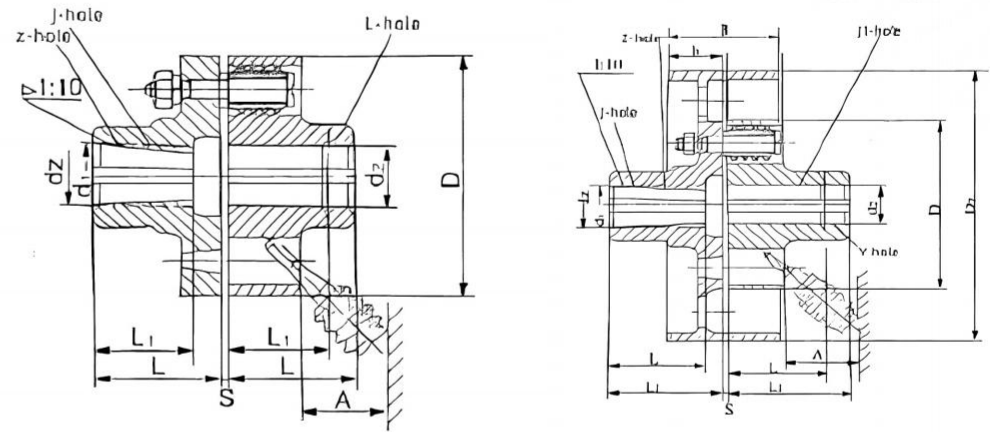
Flexible Sleeve Column Pin Coupling



Product Introduction

A limiting surface is arranged in the middle of the outer sleeve of the elastic pin connection, a drum-shaped pin retainer is arranged between the outer sleeve and the left and right half couplings respectively, the inner and outer surfaces of the drum-shaped pin retainer are arranged with mounting grooves, the inner surface of the outer sleeve is arranged with an outer positioning groove, the outer surfaces of the left half coupling and the right half coupling are arranged with inner positioning grooves, inner and outer drum-shaped pins are arranged between the drum-shaped pin retainer and the outer sleeve and between the drum-shaped pin retainer and the left and right half couplings respectively, and cover plates are arranged on the left and right sides of the outer sleeve.

Elastic pin coupling structure diagram



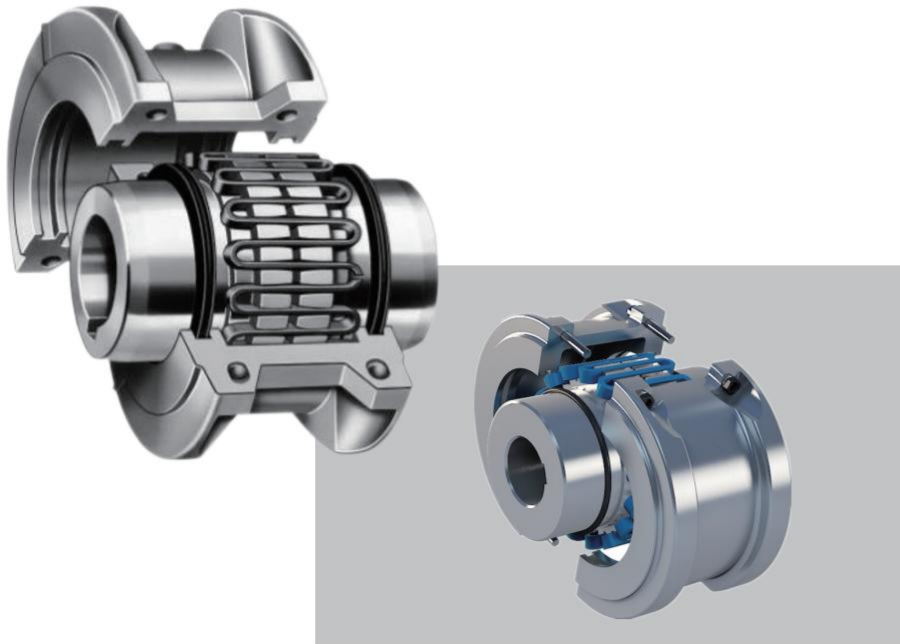
Features

-  Stable and reliable operation
-  Safe and reliable
-  Compact and strong structure
-  Equipped with ordinary shaft extension reducer
-  Good positioning performance
-  Easy installation

Snake spring coupling

Introduction of serpentine spring coupling

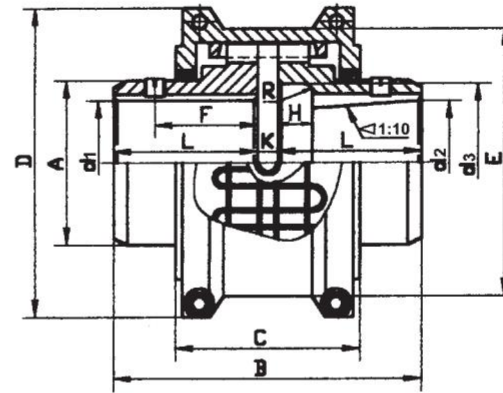
The serpentine spring coupling uses one or several groups of serpentine springs embedded in the teeth on the flanges of the two couplings to achieve the connection of the two halves of the coupling. In order to prevent the serpentine spring from being thrown out under the action of centrifugal force and to avoid dry friction between the serpentine spring and the teeth, it needs to be covered with a closed shell and filled with lubricating oil or grease.



Structural diagram of serpentine spring coupling

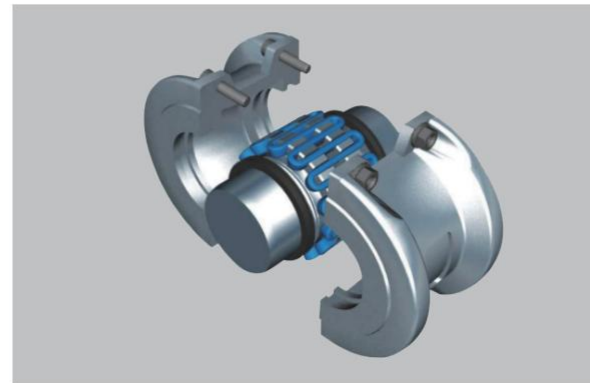
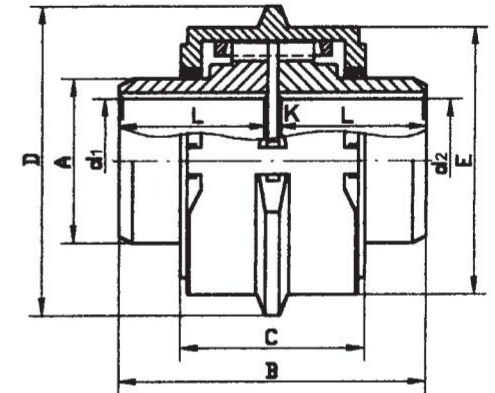
JS101~JS113 结构图

Construction dwg. of JS101~JS113



JS114~JS125 结构图

Construction dwg. of JS114~JS119



Elastic plum coupling



- Oil resistant and insulating
- The clockwise and counterclockwise rotation characteristics are exactly the same
- Intermediate elastic connection
- Long working life

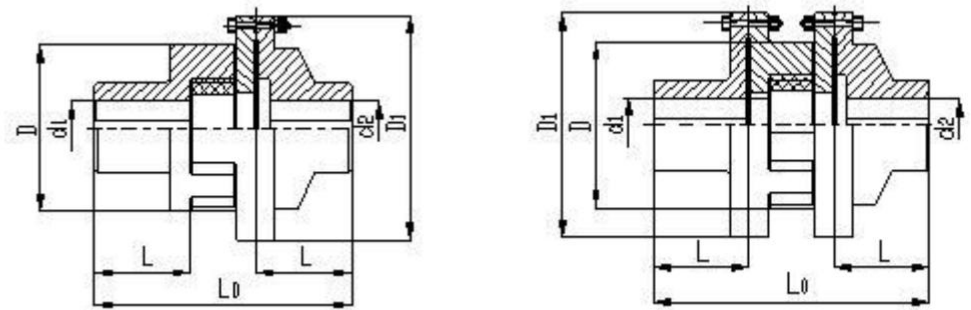
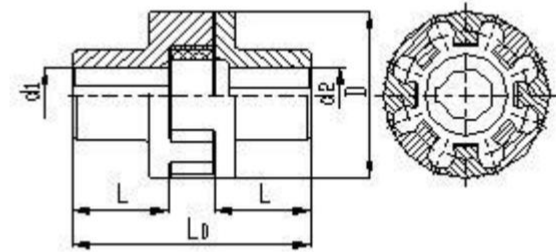


Can be used as a substitute for big brands !

Product Introduction

This coupling is suitable for shaft connection with small torque. It uses fastening bolts to fix the axis. This is the most traditional and lowest cost fixing method. The super elastic effect can compensate for angular deviation, zero rotation clearance, maintenance-free, oil-resistant and corrosion-resistant, and standard parts of different sizes at both ends.

Elastic plum coupling





HUADING

Couplings
Curved Tooth
Coupling

Series

The cross-axis universal coupling is a universal coupling with a large consumption. The bearing is a vulnerable part of the cross-axis universal coupling. The main difference between several large-scale cross-axis universal couplings lies in the changes in the bearing seat and the cross fork head, forming different structural types. In order to ensure the synchronization of the master and slave ends, the double-connection type is adopted in actual applications. The double-connection method is nothing more than welding or flange connection through bolts.

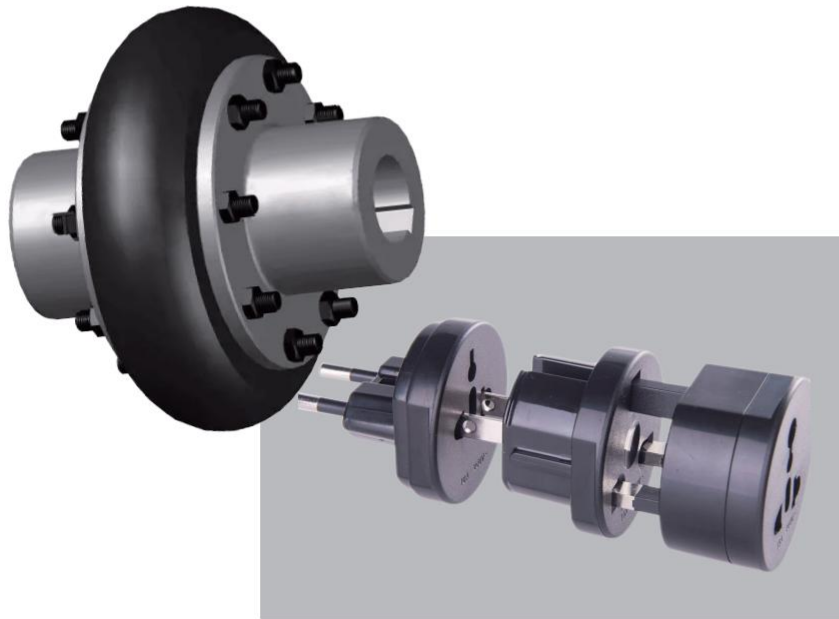


H
U
A
D
I
N
G

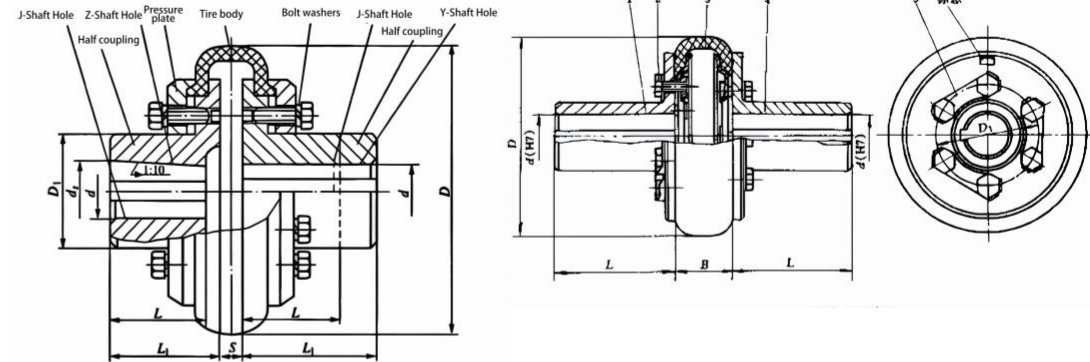
Tire coupling

Introduction to Tire Coupling

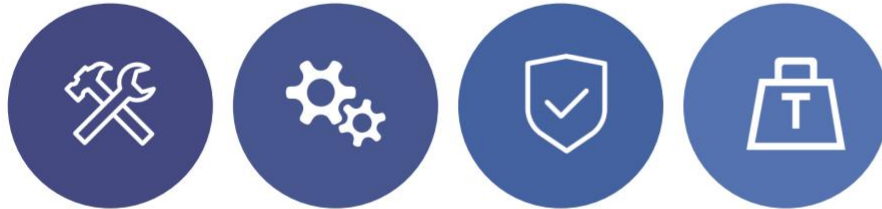
The tire coupling is a mechanical device that relies on a tire-shaped rubber element to achieve elastic connection. It is mainly used to connect two shafts, transmit torque, and has high elasticity, damping and displacement compensation capabilities.



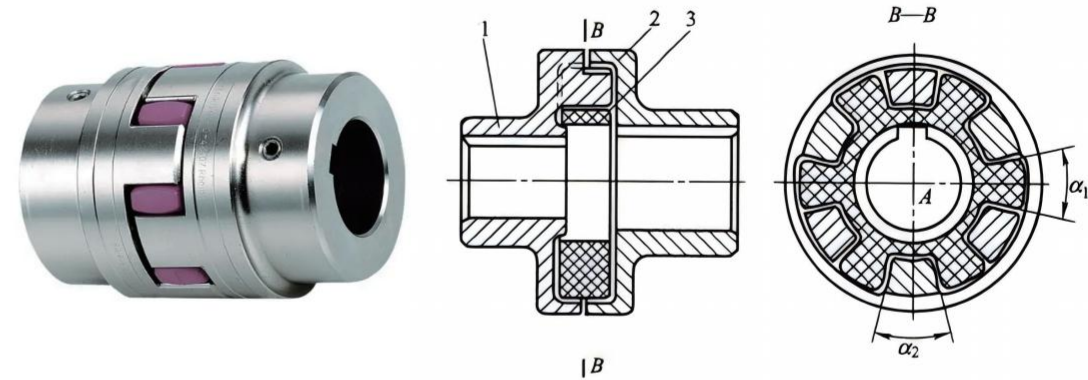
Tire coupling structure diagram



Jaw Coupling



Claw type coupling structure diagram



1- pump coupling; 2- motor coupling; 3- elastic tube block

Product introduction

The claw coupling is a device used for mechanical transmission, mainly used to connect the driving shaft and the driven shaft in mechanical equipment to transmit motion and torque. It consists of two relatively independent half-shafts connected together by a claw connector, which can effectively bear the torsional force, reduce vibration, and improve the efficiency and stability of the mechanical device. 1.



Features

- 1 Small size and light weight: The claw coupling has a compact design, takes up little space, and is easy to install and maintain.
- 2 Simple structure: Its structure is relatively simple, and it is easy to manufacture and install.
- 3 Easy to install: Due to its small size and light weight, the installation process is relatively simple and quick.
- 4 Low Price: Compared to other types of couplings, claw couplings are less expensive.

Customized service



Providing you with services

CUSTOMIZATION

Be your own brand designer

Meet your specific, unique or potential needs and expectations to achieve all-round satisfaction



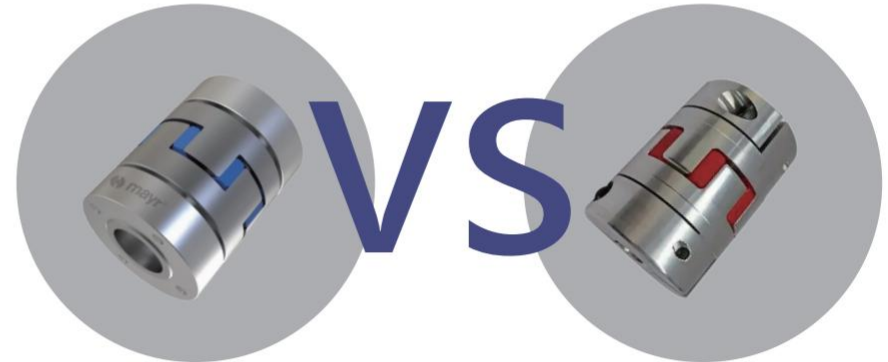
Big brand substitute



Don't you think this is GWB?



No, we are Huading!



Don't you think this is mayr?

No, we are Huading!

BIG BRAND QUALITY AT A LOWER PRICE!