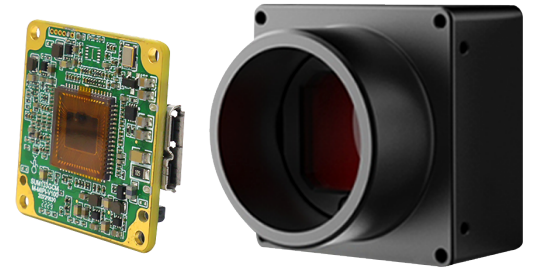


FEATURES

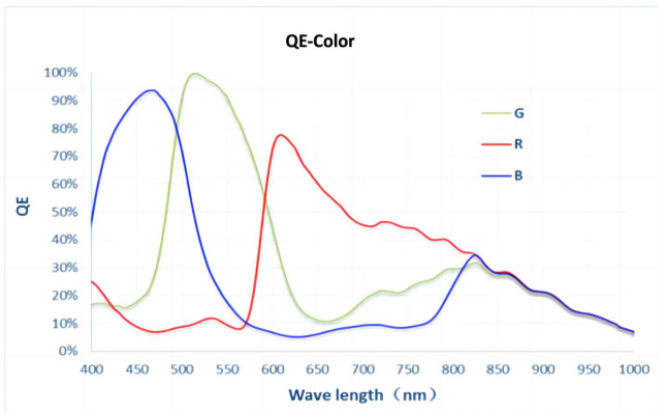
- Single board design, compact size, ultra-thin size.
- Embedded system integration is more convenient and more integrated.
- Supports 8bit raw data output.
- Multiple interface options: single board /C interface /M12 interface.
- The camera comes with programmable IO, which supports external trigger flash synchronous photography.
- Supports PCLinux and ARMLinux systems.



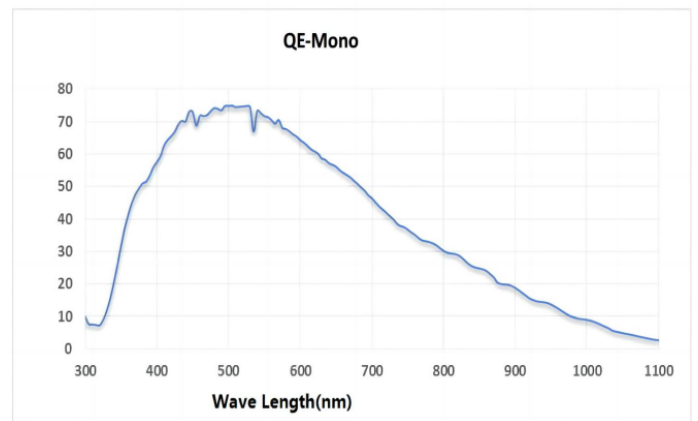
SPECIFICATIONS

Parameter	Model	BL-AU133GC	BL-AU133GM
Sensor		1/2.7"CMOS	
Shutter		Global	
Color/Mono		Color	Mono
Pixel Size		4umx4um BSI	
Resolution		1.3MP	
Frame rate		1280x1024@221.25FPS	
Output pixel width		8 bits	
Sensitivity		8V/Lux·s	
GPIO		2 bidirectional IO, each with input or output functions, can be configured as input/output/trigger/flash in the IO control	
Maximum gain		6	
Exposure time(ms)		0.0043~35.2	
AD width		10bit	
Frame buffer		128MB	
Camera custom data		2KB	
Video output format		Bayer BG 8bit	Mono 8bit
Trigger mode		Continuous/software triggered/hardware triggered	
SNR		40dB	
Lens mount		C/M12	
Data interface		USB3.0、 Micro B	
Power supply		5V	
Power		<2W	
Dimensions		35x36.8x27.9mm (excluding lens base and rear shell interface)	
Weight		< 75g	
Temperature		Working temperature:0~50° Storage temperature:-30~60°	
Operating system		WINXP, WIN7/8/10 32-bit & 64-bit systems, Linux and ARM Linux drivers, Android platform drivers, MAC OS systems	
Drivers		Directshow component Halcon Dedicated Component Labview Dedicated Driver OCX Component TWAIN component	
Programming language package		C/C++/C#/VB6/VB.NET/Delphi/BCB/Python/Java	
Programming language package		Support arbitrary size ROI custom resolution, contrast and gamma adjustment, saturation adjustment, white balance correction, black level correction, custom dead point coordinate correction, ISP image processing acceleration, 3D noise reduction, custom LUT table, frame rate adjustment, custom camera name, and more	

SPECTROGRAMS

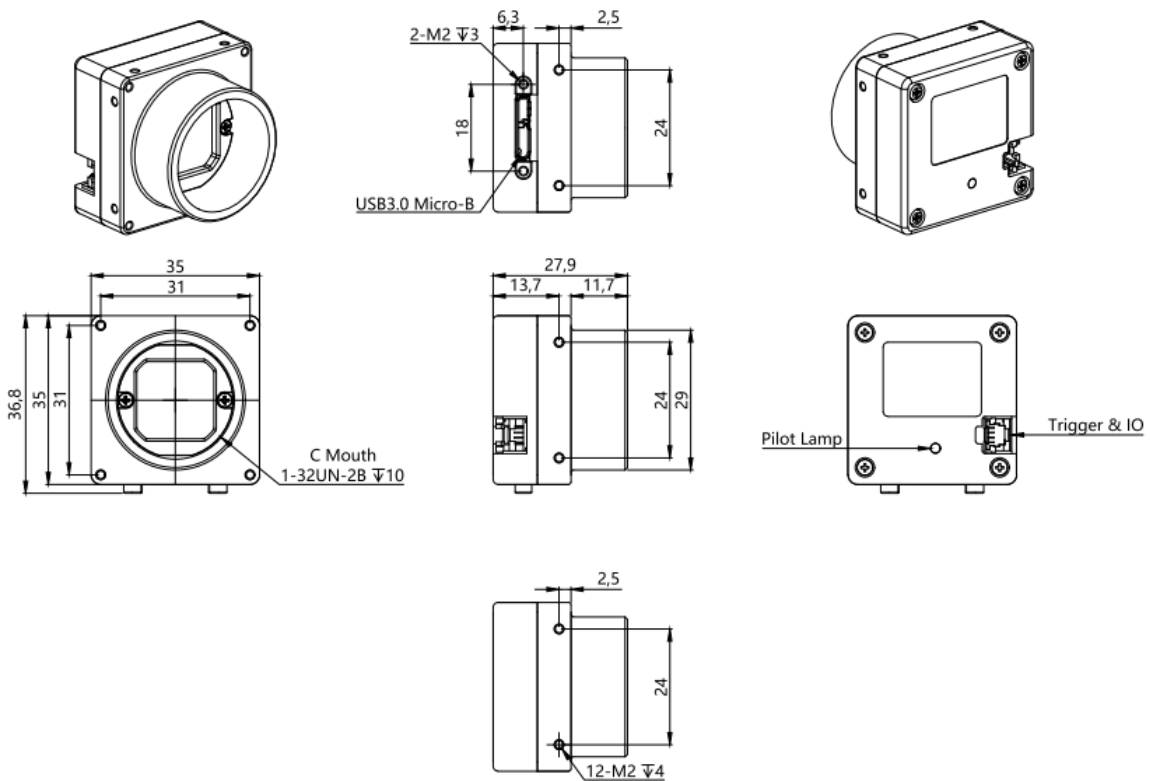


BL-AU133GC

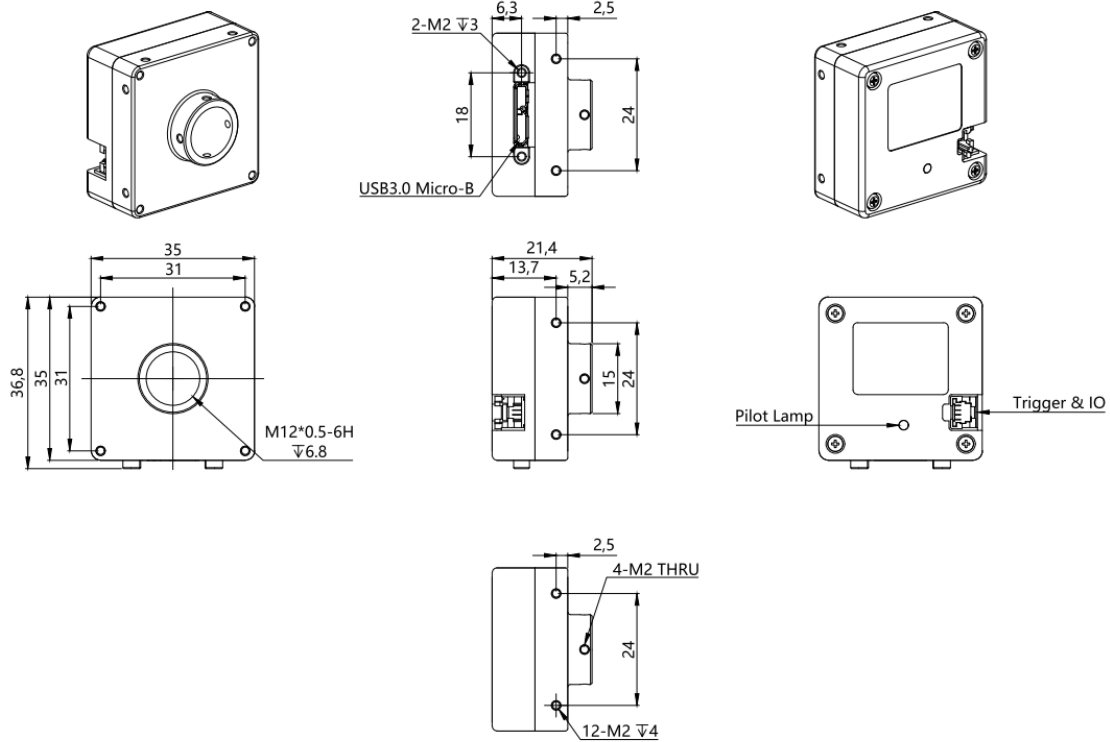


BL-AU133GM

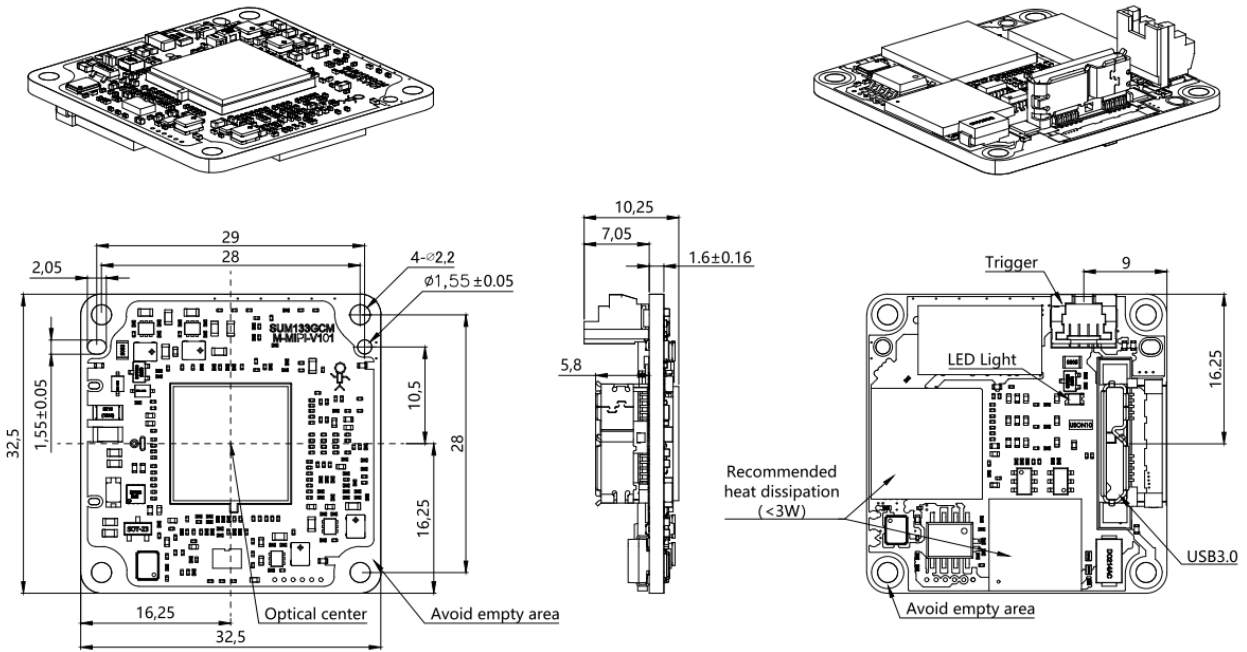
DIMENSIONS(Unit: mm)



C - Interface

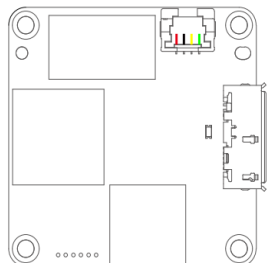


M - Interface



B - Interface

List of pin functions :



Port	Pin	Line Color	Signal Name	Signal Description	Remark
PortA	1	red	NC		
	2	black	GND	IO_COM public end	
	3	yellow	GPIO1+	Bidirectional IO1	Default trigger
	4	green	GPIO2+	Bidirectional IO2	Default flash