

# Ultra-micro GigE Area Scan Camera

MV-135GM120-GB



- 15.8mm ultra narrow single motherboard design
- The main board is connected with the SENSOR board using soft cable, flexible installation
- Gigabit network interface, compliant with GigEVision and GenICam protocols

## Key Features

- 15.8mm ultra narrow single motherboard design.
- The main board is connected with the SENSOR board using soft cable,flexible installation.
- Flexible cable connection, the longest support 300mm communication distance.
- Gigabit network interface, compliant with GigEVision and GenICam protocols.
- Hardware image processor that optimizes the image for the matching algorithm.
- Built-in large capacity frame buffer to ensure real-time and reliable transmission of multi-camera.



## Applications

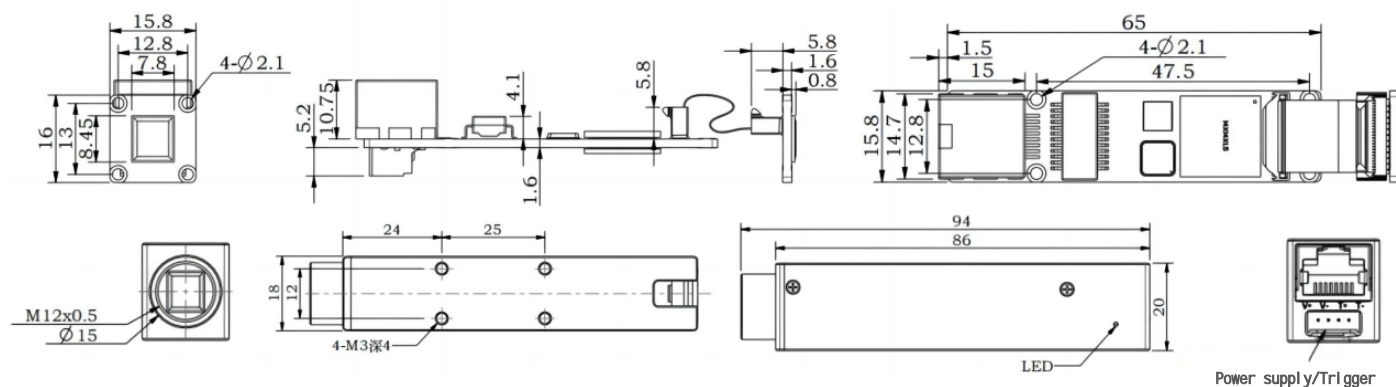
- \* Mobile Visual Alignment and recognition
- \* Fly sweep code, motion detection

## Specifications

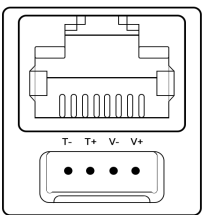
Model:	MV-135GM120-GB
Pixel	1MP
Sensor Size	Diagonal line: 4mm; 1/4
Color/Mono	Mono
Pixel Size	2.7umx2.7um
Shutter	Global
Resolution	1000×1000
Max Frame Rate	120FPS
Exposure Time	7us-523ms876us
Gain	Gain: 1.0x-32.0x, step: 0.125x
Spectrum of response	300nm-1000nm
Bit depth	10bit
Image format	RAW8/RAW12(Original image)RAW8/RAW16/MONO8/MONO16
Trigger Mode	Hardware Trigger,Software Trigger
Exposure function	Manual exposure/auto exposure/area exposure
Camera ID	Camera factory write ID,at the same time support the user to write ID in the camera

Firmware update	Support
Multi-camera support	16 units
Programmable control	Exposure time, gain, destrobging, Gamma, Contrast, black level, sharpness, 2D noise reduction, 3D noise reduction
Photo formats	RAW、BMP、JPG、PNG
Software interfaces	GigEVision,GenICam,HALCON,LabView,OpenCV
Support system	WindowsXP32Bit,Windows7/8/8.1/10(32/64Bit)
Data interface	GigE
Trigger interface	4 pin Wafer socket
Power supply	DC9-28V , Power dissipation<2W
Work environment	Temperature : -10°C-50°C ; Humidity : 10%-60%RH ( No condensation )
Storage environment	Temperature : -30°C-70°C ; Humidity : 10%-80%RH
Lens mount	M12
Dimensions	20mmx18mmx94mm ( Including the shell )
Weight	≈ 48g
Standard fittings	3 meters network cable

## Dimension(unit:mm)



## Interface Definition

	PIN	Definition	Description
	1	POWER_IN	Power input, DC9-28V
	2	GND	Ground
	3	TRIGGER+	Trigger positive electrode
	4	TRIGGER-	Trigger negative electrode