

USB3.0 Miniature industrial Area scan camera

Application Industry:

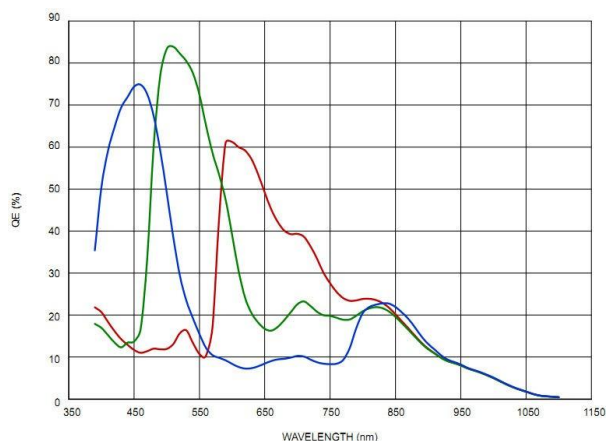
It is suitable for semiconductor, PCB inspection and other industries.

Product Features:

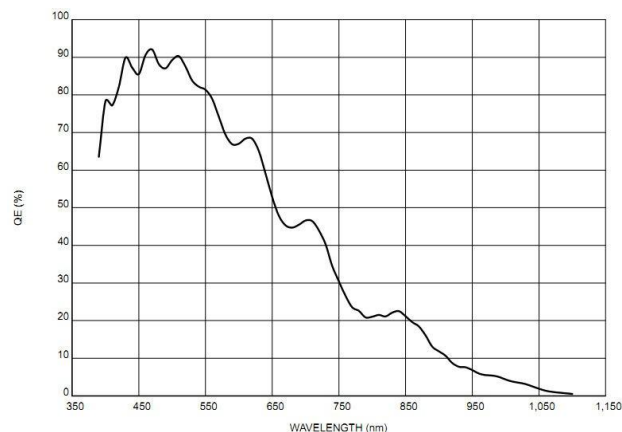
- 16g ultra-light weight.
- USB3.0 Ultra-high speed interface, 2568x1920 resolution, 60FPS
- Maximum speed of 300 MByte/s.
- Low latency for image acquisition.
- Power consumption is as low as 1.2W, which is more than 50% lower than the power consumption of peer cameras.
- External dimension : 20mmx20mmx22mm.



Spectral Response Curve:



MV-501UC60-RT



MV-501UM60-RT

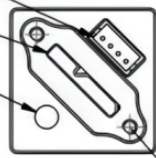
Mechanical Specification:

unit:mm

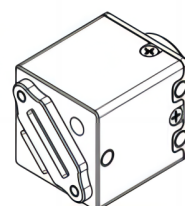
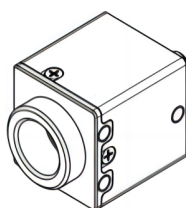
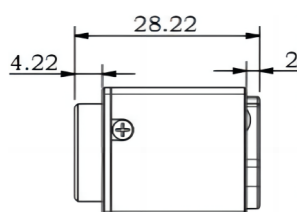
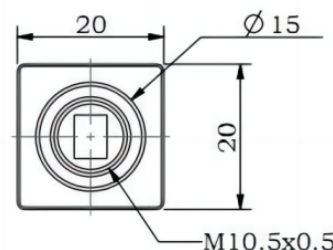
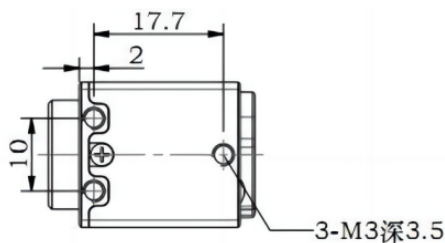
Trigger Interface

USB3.0

LED



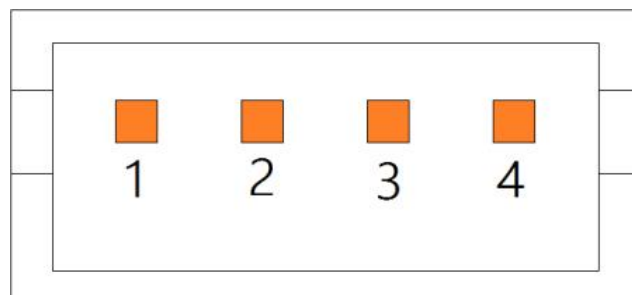
2-M2深4



Technical parameters

Specifications	Model	MV-501UC60-RT	MV-501UM60-RT
Sensor		1/2.5" CMOS	
Shutter type		Rolling shutter	
Camera type		Color	Mono
Pixel size		2.2umx2.2um	
Effective pixels		5MP	
Scan patterns		Progressive scanning	
Resolution @ Frame rate		2568x1920 @60FPS	
		2568x960(ROI) @116FPS	
		2568x480(ROI) @219FPS	
		1284x960(SKIP2) @116FPS	
		1284x960(BIN2) @116FPS	
		2568x192(TEST PATTERN) @60FPS	
		ROI of any size (minimum ROI resolution 96x96)	
Dynamic range		74.3dB	
Signal-to-Noise Ratio		40dB	
Sensitivity		36ke-/Lux.S	18.8ke-/Lux.S
Exposure Time		8us-199ms998us	
Gain Range		1.0x – 15x	
Bit Depth		8bit	
Spectral Response		390nm ~ 650nm	380nm ~ 940nm
Image format		RAW8 , BMP24 , MONO8	RAW8 , BMP24 , MONO8
Trigger Mode		Continuous operation, software trigger, hardware trigger	
Exposure function		Manual exposure/auto exposure/area exposure	
Camera ID		Camera factory write ID, at the same time support the user to write ID in the camera	
Multi-camera support		4 sets	
Programmable control		Exposure time, Gain, strobe cancellation, Gamma, Contrast, Black level, Sharpness, 2D noise reduction, 3D noise reduction, Saturation, white balance	Exposure time, gain, destrobing, Gamma, Contrast, black level, sharpness, 2D noise reduction, 3D noise reduction
Support software interface		GenICam, HALCON, LabView, OpenCV	
Support system		Windows XP 32Bit ; Windows 7/8/8.1/10 (32/64Bit)	
Data interface		USB3.0 5Gbps , MICRO interface	
External trigger interface		4 pin PH1.5mm 180° Wafer holder, TTL-5.0V level	
Power supply		USB 5V power supply, the maximum power consumption is less than 1.2W, standby less than 0.5W	
Work environment		Temperature: -10 ~ 50; Humidity: 10%-60% RH	
Storage environment		Temperature: -30 ~ 70; Humidity: 10% ~ 90%RH (no condensation)	
Lens interface		M10.5	
Size		20mmx20mmx22mm (excluding lens interface length)	
Weight		16g	
Standard accessories		3m USB3.0 cable	

Trigger interface Definition :



PIN	Definition	State	Description
1	VDDIO	Power supply	IO level indication, output 5V voltage, electrical output current <20mA
2	TRIGGER	Input	Trigger input, TTL-5.0V standard
3	FLASH	Output	Flash output, TTL-5.0V standard
4	GND	GND	Ground line