

**UFP  
BUILDING  
MATERIALS  
ZAIAN MATERIAL**





## Your Partner in Sustainable Building Solutions.

Our mission is to be the preferred one-stop solution provider for sustainable and fiberglass foamed PVC composite materials. Our versatile products are ideal for both indoor and outdoor construction and various industrial applications, including ASA capped PVC decking, PVC decking, PVC wall panels, PVC fences, horse stable boards, aluco-wood.



# Zhejiang Zaian Material Co., Ltd

The company is committed to achieving a leading position in the field of PVC building materials through technological innovation. We will continue to pursue excellence, provide customers with high-quality environmentally friendly building material solutions, and promote the sustainable development of the industry.





## R&D

We collaborated with a team of professors from renowned universities to solve common polyethylene (PE) product problems in the market, such as cracking, expansion and shrinkage. Through rigorous research and development, we develop innovative solutions to improve the durability and performance of PE materials.

Our efforts have resulted in the development of PVC products with significantly improved resistance to cracking and swelling, ensuring that they meet the higher quality standards. Additionally, by solving the shrinkage issue, we improve the dimensional stability of our products, making them more reliable in a variety of applications.

R&D support from university professor teams and new material research institutes. Deep cooperation with highly professional manufacturers specializing in indoor and outdoor bamboo products, and composite ultra fiber PVC products

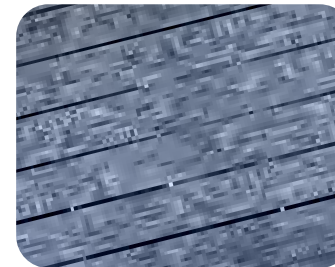




# DIRECTORY

## UFP BUILDING MATERIALS

We have upgraded the traditional PVC decking and launched our new UFP series decking. It has a co-extruded layer that greatly improves the weather resistance of the decking. At the same time, it has an authentic wood grain appearance and high durability. The interior uses a foaming design to make the decking more resistant to rot, mold, mildew, insects, and moths. It is less likely to crack or warp, **ensuring a longer-lasting, more stable product surface.**



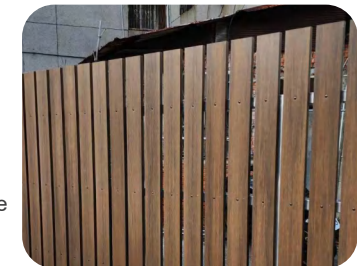
**PVC FEATURES**  
advantages



**DECKING**  
products  
features&application  
easy maintenance  
easy to install



**WALL PANEL**  
products  
healthy and comfortable



**FENCE**  
co-extrusion  
UFP fence  
horse stable board

# PVC FEATURES

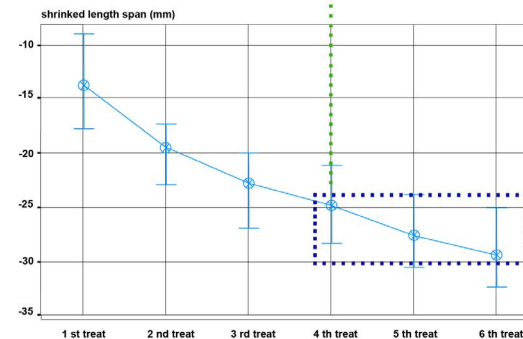
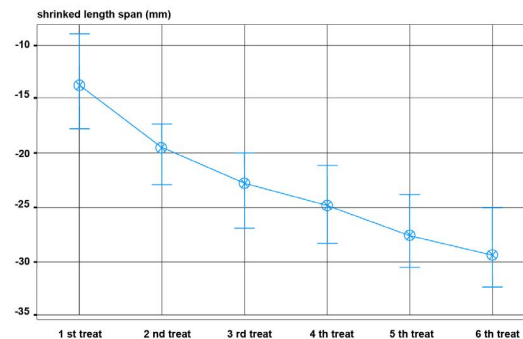
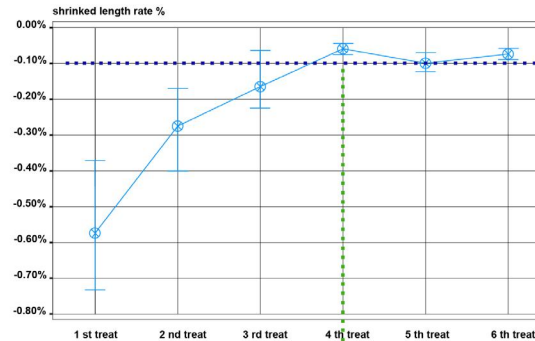
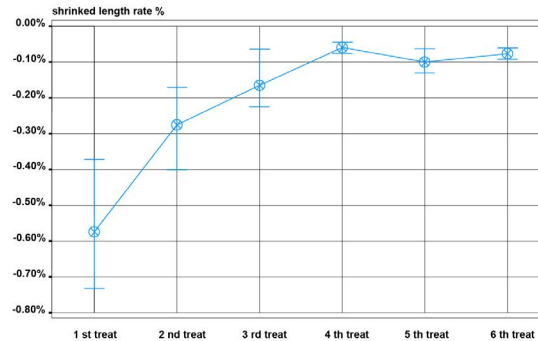
## Advantages

### Stability

For our foamed PVC products, we **emphasize shrinkage** rather than expansion.

The foaming process inherently involves expansion, and during foaming and extrusion, the planks nearly reach their maximum expansion.

The subsequent heat treatment balances and releases the internal stresses, causing the planks to shrink back to a stable size. As a result, the planks may initially shrink by no more than 0.2% after installation, before expanding slightly to a balanced size that will not be exceeded. This stability allows for head-to-head installation of the PVC products.



### Durability & Longevity

Our decking is **highly durable and resistant to rot, mold, mildew, insects, and decay**. It has a **strong weather resistant** and can withstand harsh weather conditions, making it suitable for outdoor use in various climates. **It is less prone to splintering, cracking, or warping, ensuring a longer-lasting and more stable deck surface.**

### Safety & Aesthetics

Our decking tends to be **splinter-free**, providing a safer surface for walking barefoot. This can be particularly beneficial for families with children. It is available in a variety of colors and styles, **providing design flexibility**. It can mimic the look of natural wood without the associated maintenance challenges.

### Moisture Resistance & Insect Resistance

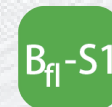
Our decking is inherently **moisture-resistant**, making it an ideal choice for areas with high humidity or decks exposed to rain and splashes. It is not attractive to insects, such as termites, which can be a common issue with traditional wood decks.

### Color Retention & Easy Maintenance

Our decking is less likely to fade over time due to exposure to sunlight, maintaining its appearance for an extended period. It does not need to be stained, sealed, or painted, and it is easy to clean with water. **This can save time and money on maintenance over the life of the deck.**

### Easy Installation

Our decking come with features such as hidden fastening systems, simplifying the installation process and providing a clean, finished look. They have a shrinkage rate of less than 0.2%, they can be **head to head installation** for a more pleasing appearance.



FLAME RESISTANT



FORMALDEHYDE-FREE



NON DEFORMATION



STABLE STRUCTURE



TERMITE RESISTANT



CUSTOMIZATION

# DECKING

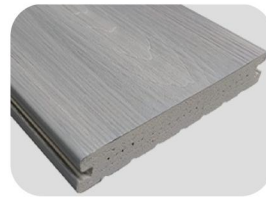
## CO-EXTRUSION

MODEL NUMBER : **GD1322S**

MODEL NUMBER : **GS1422S**

SIZE(mm) : **2750\*138\*22.5**

SIZE(mm) : **2750\*140\*22.5**



These two types of decking are available in five colours



TS WY LM QH HT

## UFP DECKING

MODEL NUMBER : **DJ1422K**

MODEL NUMBER : **DJ1422S**

SIZE(mm) : **2750\*140\*22.5**

SIZE(mm) : **2750\*140\*22.5**



These two types of decking are available in four colors



BL YM QH HT



Three generations of texture

**The newest three generations of textures are more natural and beautiful**



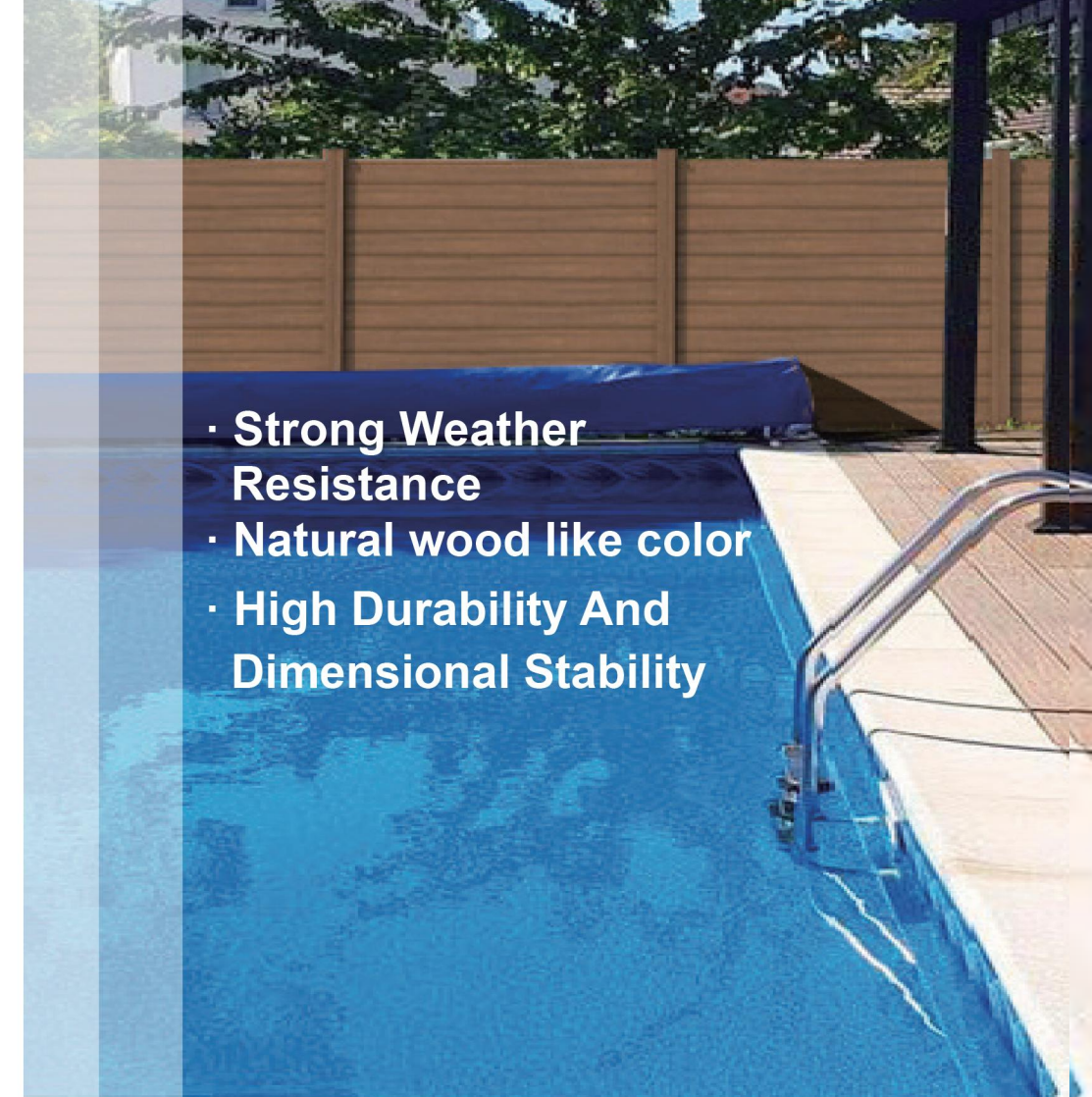
generation texture



generation 1st texture



generation 2nd texture



- Strong Weather Resistance
- Natural wood like color
- High Durability And Dimensional Stability

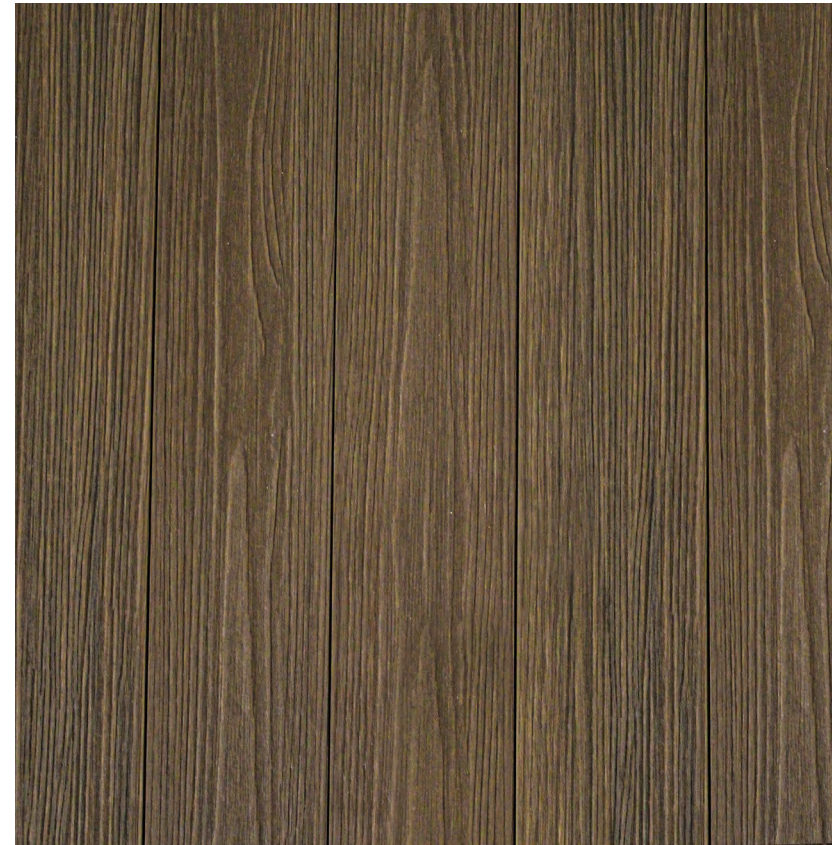


# DECKING CO-EXTRUSION

# SGS



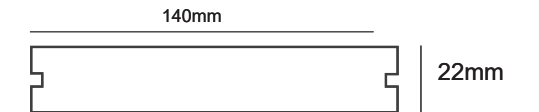
ANTI SLIP	Critical angle of inclination: 34.0° Classification: R12	AS 4586-2013
LINEAR EXPANSION	Change rate in Length -0.19%(-30°C,48h) Change rate in Length 0.09%(60°C,48h)	ASTM D1037-12(2020) ASTM D1037-12(2020)
LIGHT AGING 2000h Exposure cycle	ΔE*ab SCI=1.4 SCE=2.4	ISO 4892-2:2013
THICKNESS SWELLING	0.30%	ASTM D1037-12(2020)
FIRE RESISTANCE	Bfi-S1	EN 13501-1:2018
TENSILE STRENGTH	11.5Mpa	ASTM D638-22
FLEXURAL STRENGTH	25.6MPa	ASTM D6109-24
MODULUS OF ELASTICITY	2320Mpa	ASTM D6109-24
STIFFNESS	2220MPa	ASTM D7032-21
SHORE HARDNESS	D/15:69	GBIT 2411-2008
WATER ABSORPTION	1%	ASTM D1037-12(2020)
ABRASION RESISTANCE	PASS	ASTM D4060-19
PENDULUM	PASS	EN 16165:2021



ASA-PVC FULL CAPPED  
CO-EXTRUSION DECKING



MODEL NUMBER **GS1422S/HT**



SIZE **140 x 22 mm**

## COLOR





# DECKING CO-EXTRUSION

# SGS



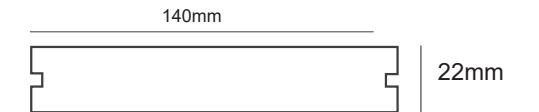
ANTI SLIP	Critical angle of inclination: 34.0° Classification: R12	AS 4586-2013
LINEAR EXPANSION	Change rate in Length -0.19%(-30°C,48h) Change rate in Length 0.09%(60°C,48h)	ASTM D1037-12(2020) ASTM D1037-12(2020)
LIGHT AGING 2000h Exposure cycle	ΔE*ab SCI=1.4SCE=2.4	ISO 4892-2:2013
THICKNESS SWELLING	0.30%	ASTM D1037-12(2020)
FIRE RESISTANCE	Bfi-S1	EN 13501-1:2018
TENSILE STRENGTH	11.5Mpa	ASTM D638-22
FLEXURAL STRENGTH	25.6MPa	ASTM D6109-24
MODULUS OF ELASTICITY	2320Mpa	ASTM D6109-24
STIFFNESS	2220MPa	ASTM D7032-21
SHORE HARDNESS	D/15:69	GBIT 2411-2008
WATER ABSORPTION	1%	ASTM D1037-12(2020)
ABRASION RESISTANCE	PASS	ASTM D4060-19
PENDULUM	PASS	EN 16165:2021



ASA-PVC FULL CAPPED  
CO-EXTRUSION DECKING



MODEL NUMBER **GS1422S/YS**



SIZE **140 x 22 mm**

## COLOR



# DECKING CO-EXTRUSION

# SGS



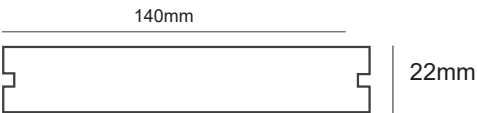
ANTI SLIP	Critical angle of inclination: 34.0° Classification: R12	AS 4586-2013
LINEAR EXPANSION	Change rate in Length -0.19%(-30°C,48h) Change rate in Length 0.09%(60°C,48h)	ASTM D1037-12(2020) ASTM D1037-12(2020)
LIGHT AGING 2000h Exposure cycle	ΔE*ab SCI=1.4SCE=2.4	ISO 4892-2:2013
THICKNESS SWELLING	0.30%	ASTM D1037-12(2020)
FIRE RESISTANCE	Bfi-S1	EN 13501-1:2018
TENSILE STRENGTH	11.5Mpa	ASTM D638-22
FLEXURAL STRENGTH	25.6MPa	ASTM D6109-24
MODULUS OF ELASTICITY	2320Mpa	ASTM D6109-24
STIFFNESS	2220MPa	ASTM D7032-21
SHORE HARDNESS	D/15:69	GBIT 2411-2008
WATER ABSORPTION	1%	ASTM D1037-12(2020)
ABRASION RESISTANCE	PASS	ASTM D4060-19
PENDULUM	PASS	EN 16165:2021



ASA-PVC FULL CAPPED  
CO-EXTRUSION DECKING

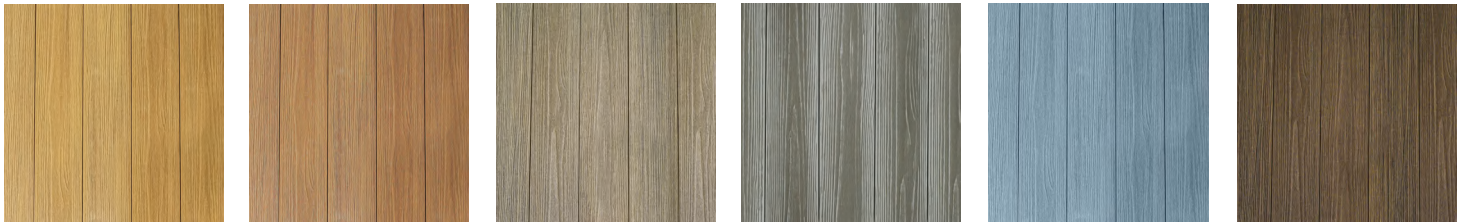


MODEL NUMBER **GS1422S/WY**



SIZE **140 x 22 mm**

## COLOR



# DECKING CO-EXTRUSION

# SGS



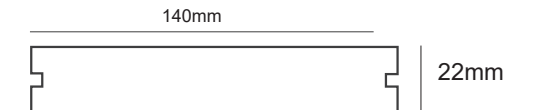
ANTI SLIP	Critical angle of inclination: 34.0° Classification: R12	AS 4586-2013
LINEAR EXPANSION	Change rate in Length -0.19%(-30°C,48h) Change rate in Length 0.09%(60°C,48h)	ASTM D1037-12(2020) ASTM D1037-12(2020)
LIGHT AGING 2000h Exposure cycle	ΔE*ab SCI=1.4SCE=2.4	ISO 4892-2:2013
THICKNESS SWELLING	0.30%	ASTM D1037-12(2020)
FIRE RESISTANCE	Bfi-S1	EN 13501-1:2018
TENSILE STRENGTH	11.5Mpa	ASTM D638-22
FLEXURAL STRENGTH	25.6MPa	ASTM D6109-24
MODULUS OF ELASTICITY	2320Mpa	ASTM D6109-24
STIFFNESS	2220MPa	ASTM D7032-21
SHORE HARDNESS	D/15:69	GBIT 2411-2008
WATER ABSORPTION	1%	ASTM D1037-12(2020)
ABRASION RESISTANCE	PASS	ASTM D4060-19
PENDULUM	PASS	EN 16165:2021



ASA-PVC FULL CAPPED  
CO-EXTRUSION DECKING



MODEL NUMBER **GS1422S/LM**



SIZE **140 x 22 mm**

## COLOR



# DECKING CO-EXTRUSION

# SGS



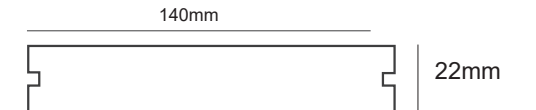
ANTI SLIP	Critical angle of inclination: 34.0° Classification: R12	AS 4586-2013
LINEAR EXPANSION	Change rate in Length -0.19%(-30°C,48h) Change rate in Length 0.09%(60°C,48h)	ASTM D1037-12(2020) ASTM D1037-12(2020)
LIGHT AGING 2000h Exposure cycle	ΔE*ab SCI=1.4SCE=2.4	ISO 4892-2:2013
THICKNESS SWELLING	0.30%	ASTMD1037-12(2020)
FIRE RESISTANCE	Bfi-S1	EN 13501-1:2018
TENSILE STRENGTH	11.5Mpa	ASTM D638-22
FLEXURAL STRENGTH	25.6MPa	ASTM D6109-24
MODULUS OF ELASTICITY	2320Mpa	ASTM D6109-24
STIFFNESS	2220MPa	ASTM D7032-21
SHORE HARDNESS	D/15:69	GBIT 2411-2008
WATER ABSORPTION	1%	ASTMD1037-12(2020)
ABRASION RESISTANCE	PASS	ASTM D4060-19
PENDULUM	PASS	EN 16165:2021



ASA-PVC FULL CAPPED  
CO-EXTRUSION DECKING



MODEL NUMBER **GS1422S/QH**



SIZE **140 x 22 mm**

## COLOR



# DECKING CO-EXTRUSION

# SGS



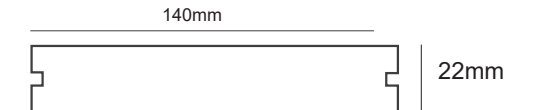
<b>ANTI SLIP</b>	Critical angle of inclination: 34.0° Classification: R12	AS 4586-2013
<b>LINEAR EXPANSION</b>	Change rate in Length -0.19%(-30°C,48h) Change rate in Length 0.09%(60°C,48h)	ASTM D1037-12(2020) ASTM D1037-12(2020)
<b>LIGHT AGING 2000h Exposure cycle</b>	ΔE*ab SCI=1.4SCE=2.4	ISO 4892-2:2013
<b>THICKNESS SWELLING</b>	0.30%	ASTMD1037-12(2020)
<b>FIRE RESISTANCE</b>	Bfl-S1	EN 13501-1:2018
<b>TENSILE STRENGTH</b>	11.5Mpa	ASTM D638-22
<b>FLEXURAL STRENGTH</b>	25.6MPa	ASTM D6109-24
<b>MODULUS OF ELASTICITY</b>	2320Mpa	ASTM D6109-24
<b>STIFFNESS</b>	2220MPa	ASTM D7032-21
<b>SHORE HARDNESS</b>	D/15:69	GBIT 2411-2008
<b>WATER ABSORPTION</b>	1%	ASTMD1037-12(2020)
<b>ABRASION RESISTANCE</b>	PASS	ASTM D4060-19
<b>PENDULUM</b>	PASS	EN 16165:2021



PVC DECKING



MODEL NUMBER **DS1422S/Q**



SIZE **140 x 22 mm**

## COLOR





## DECKING

# Features

water resistance, moisture-proof, splinter-free, shrinkage rate  $\leq 0.2\%$ , weather resistance, anti-mildew, anti-cracking, easy maintenance, simulated wood grain design.

# Application

outdoor terrace and platform, patio, balcony, swimming pool, backyard, public park and etc.



## DECKING

# Easy maintenance



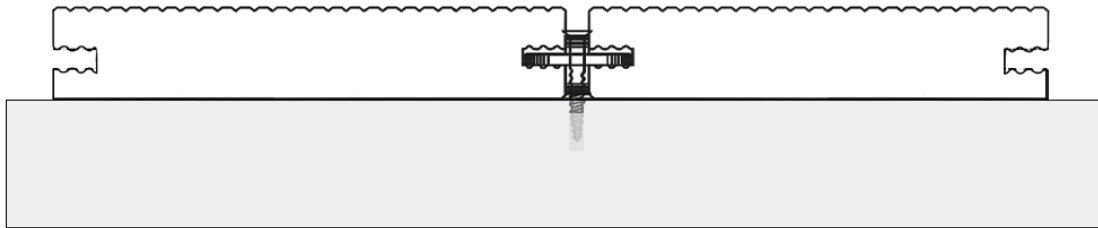
After long-term use, our decking will still remain in good condition and will **not be easy to crack or fade**. If you want to change the color of your floor, you can simply paint it, which significantly reduces maintenance costs. What's even more gratifying is that our flooring is designed with a **simulated wood grain**, which not only adds to the aesthetics, but also makes the overall effect look natural. It is worth mentioning that this flooring has a **double-sided design**, with solid wood grain on one side and a stylish brushed effect on the other, giving you more possibilities and creative space for your decoration.



## DECKING

# Easy to install

Our deckings come with features such as hidden fastening systems, simplifying the installation process and providing a clean, finished look.



## ACCESSORY

### JOIST



### CLIP



### SCREW







## WALL PANEL



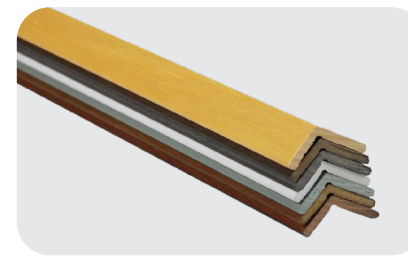
MODEL NUMBER : **GQ175**

SIZE(mm) : **2750\*170\*15**



MODEL NUMBER : **GQ939**

SIZE(mm) : **2750\*93\*9**



MODEL NUMBER : **J3325**

SIZE(mm) : **2750\*33\*25**

The fire resistant rating of our wall panels  
is **Bfl-S1**

As the picture is taken by the camera, so there may be color difference. Welcome to contact us, we will provide samples for you to choose. You can also customize the color according your needs. See page 9-12 for more information on these.

## WALL PANEL

# Healthy and comfortable

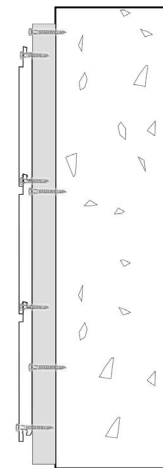
Our wall panel has excellent **waterproof, fireproof and oil-proof functions**, and is also **easy to clean and maintain**.

So you don't have to worry about daily maintenance.

More importantly, our wall panels do not contain **formaldehyde** and are harmless to the human body, creating a healthy and comfortable home environment for your family.



Easy to install



All our PVC wall panels are made from **recyclable eco-friendly materials**, contributing to environmental conservation and sustainability.



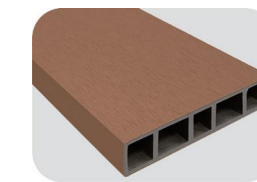
## FENCE CO-EXTRUSION

MODEL NUMBER : **GF1225K**

MODEL NUMBER : **GF4725K**

SIZE(mm) : **2750\*120\*25**

SIZE(mm) : **2750\*47\*25**



These two types of flooring are available in five colours



WY



YS



LM



QH



HT





# FENCE Application

Widely used in exterior construction projects, ceiling, facade, home fence, privacy fence, security fence, decoration fence, livestock containment, commercial buildings, hotels, swimming pool, beach, home, garden, office, horse stable, barn, farm and so on.



See page 9-12 for more information on these.

# FENCE

## UFP FENCE

MODEL NUMBER : WLE140

SIZE(mm) : 1730\*140\*20



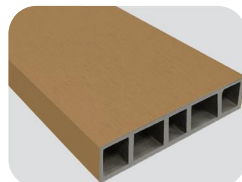
MODEL NUMBER : WLP140

SIZE(mm) : 1730\*140\*20



MODEL NUMBER : F1225K

SIZE(mm) : 2750\*120\*25



These three types of flooring are available in four colours



BL



YM



QH



YB

## THE FENCE POST KIT





# FENCE Design

Our fences are known for their unique and innovative designs. Each fence is carefully designed to enhance beauty and harmony through careful selection of shapes, colors, and spacing. By combining modern design principles with natural elements, we create fences that both match modern tastes and respect the environment. Whether you are seeking privacy or enjoy the beauty of a well-crafted outdoor feature, **our fences are an ideal choice.**



See page 9-12 for more information on these.

# FENCE

## HORSE STABLE BOARD

MODEL NUMBER : F1220S

MODEL NUMBER : F1225S

MODEL NUMBER : GF1225S

SIZE(mm) : 2750\*120\*20

SIZE(mm) : 2750\*120\*25

SIZE(mm) : 2750\*120\*25



These three types of flooring are available in four colours



BL



YM

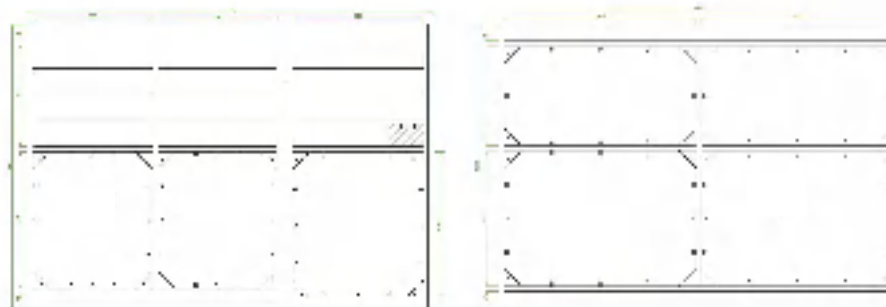


QH



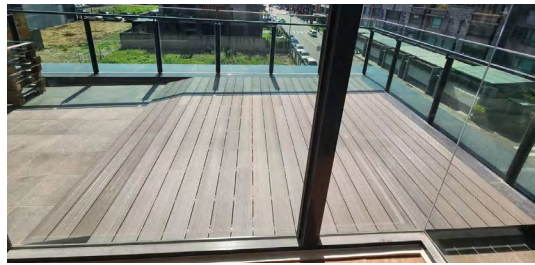
HT

## PORTABLE HORSE STABLE

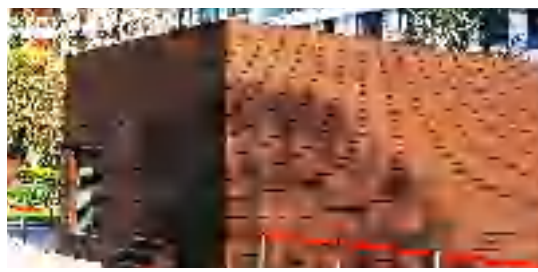




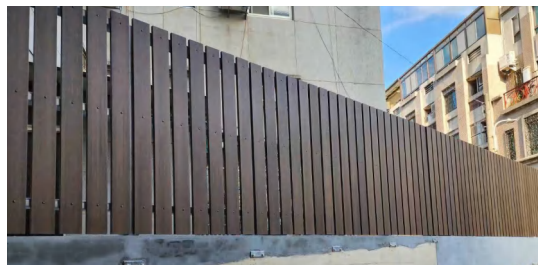
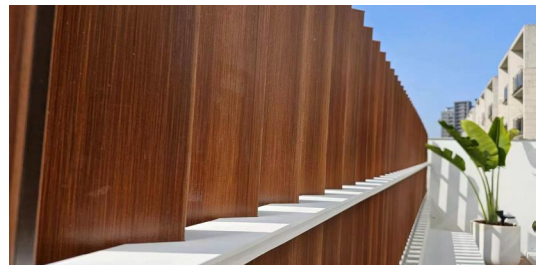
# DECKING



# WALL PANEL



# FENCE



We will continue to pursue excellence, provide customers with high-quality environmentally friendly building materials solutions, and promote the sustainable development of the industry.



# Q&A

## Solve customers' doubts about our products

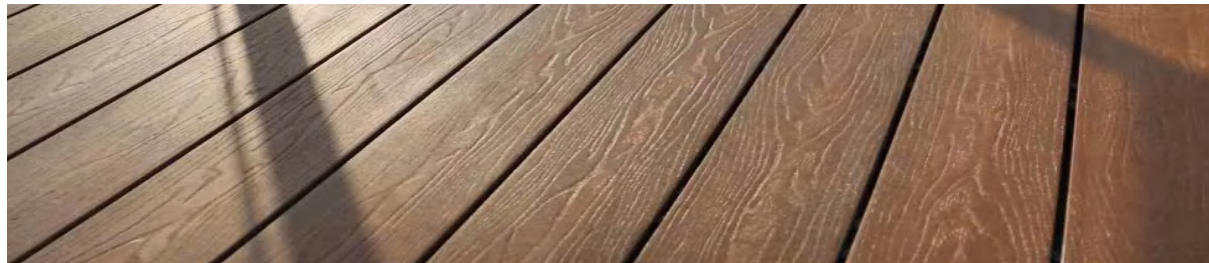
1. There are often concerns about "plasticizers" in plastic wood composite products.

Won't your products contain it?

Plasticizers are additives that can increase the softness of materials or make them liquefied. Plasticizers are substances that are very harmful to the human body. We always insist on not adding any plasticizers when choosing raw materials. Although this will increase costs (the cost of using natural and harmless additives is expensive), **health should never be ignored.** Please feel free to choose our products.

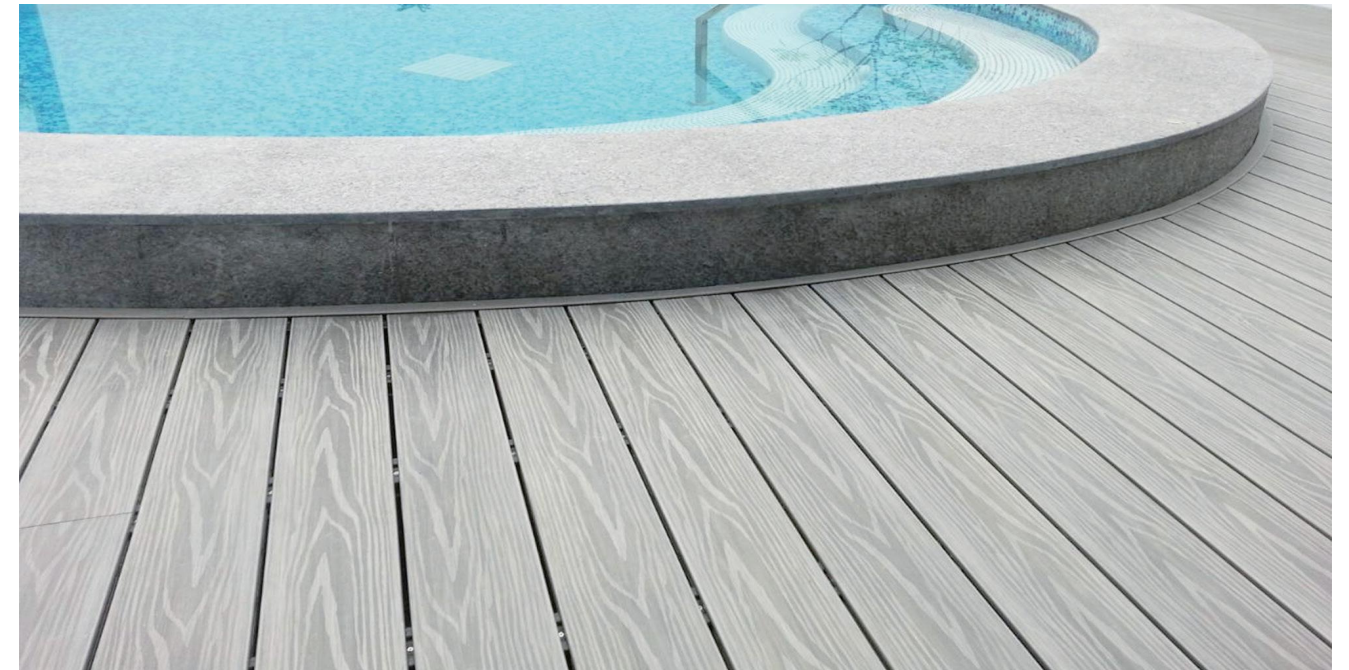
2. Will your products fade over time? How do you deal with them after fading?

Ordinary plastic wood on the market is a crystalline and non-polar product, which makes it impossible for the material to adhere to weather-resistant coatings, so it cannot be restored with weather-resistant coatings after fading. Our co-extruded fiber wood is a PVC type of plastic wood, which is a non-crystalline product. After long-term outdoor use, even if it fades, **you can use environmentally friendly water-based weather-resistant paint to restore the surface color.**



3. Will the difference in your plastic wood affect the nail holding power?

Ordinary plastic wood on the market is difficult to foam and plasticize. The plasticization process is generally carried out in a combination of heat and compression. It has high density and no pores. However, during the installation process, the screws will generate high temperatures due to high-speed rotation, melting the plasticized polymer around the screw hole, resulting in no thread patterns around the screw hole when the hole is re-locked after withdrawal, making it impossible to tighten the screw. Therefore, there is no nail holding power when the hole is locked again for the second time. In addition, the material will continue to move due to thermal expansion and contraction in the future. Because our plastic wood uses foaming and plasticization in the process, its advantage is that it can make the polymer and wood powder filler mix more evenly. After foaming, the product has expansion tension inside, similar to the wood fiber effect of wood, **which can firmly grasp the screws** and achieve the function of tightening. Moreover, our plastic wood will not be melted by high temperature when the screws are tightened for the second time, **so the nail holding power will not be destroyed.**



**ZHEJIANG ZAIAN MATERIAL CO., LTD.**

Xiaoshan Chamber Of Commerce Building,  
185 Jincheng Road, Beiqian Street,  
Hangzhou, Zhejiang, China

E-mail : [info@zaiانmaterial.com](mailto:info@zaiانmaterial.com)

Website : [www.zaiانmaterial.com](http://www.zaiانmaterial.com)

