

张家港市百沃机械有限公司  
Zhangjiagang City Bievo Machinery Co., Ltd.

地址:张家港市乐余经济开发区乐丰路  
Add: Leyu Economic Development Zone, Zhangjiagang City, Jiangsu, China  
电话(Tel): +86-512-5802 1882  
传真(Fax): +86-512-5896 0132  
手机(Mob): +86-137 0622 6588  
邮箱(E-mail): ceo@bievotech.com tony-lu@qq.com  
网址:(Website): www.bievotech.com zjgbaiwo.en.alibaba.com

**BIEVO** 百沃机械  
MACHINERY

[www.bievotech.com](http://www.bievotech.com) [zjgbaiwo.en.alibaba.com](http://zjgbaiwo.en.alibaba.com)





www.bievotech.com zjgbaiwo.en.alibaba.com

Welcome distributors and end-users around the world to cooperate with us, we look forward to receiving your inquiries in near future...



## 创新 专业 求精 诚信

缘起于真，源于诚信，圆于实业共兴共荣

Sincerity and accomplishes mutual prosperity and boom of business

## 产品简介

### PRODUCTION EQUIPMENT

张家港百沃机械有限公司是从事食品饮料机械的专业制造商，一个集开发、科研、设计、生产制造和技术服务及市场营销于一体，专业设计制造成套饮料包装机械设备的骨干企业。

本公司严格贯彻“信誉第一、服务至上、质量上乘”的企业营销理念，推出了具有国际先进水平的以下生产线：含气饮料成套生产线，果汁、茶饮料成套生产线，纯水、矿泉水成套生产线，白酒、啤酒灌装生产线等，热忱欢迎您前来我公司考察指导，合作共赢！

公司主要产品：

- 每小时2000-36000瓶纯净水、矿泉水生产线
  - 每小时2000-36000瓶果汁、茶饮料热灌装成套生产线
  - 每小时2000-36000瓶含气饮料等压灌装成套生产线
  - 每小时2000-12000瓶酱油、醋、食用油灌装包装生产线
  - 每小时60-1200桶3/5加仑大桶饮用水生产线
  - 每小时60-1200瓶1加仑小桶饮用水生产线
  - 每小时0.5-20T产量豆奶、花生奶饮料生产线
  - 每小时1-20T产量复合果蔬汁加工设备
  - 专用食用油包装生产线
  - 饮料加工机械
  - 每小时2-20水处理设备(矿泉水、纯净水、饮料加工用水)
- 其他相关设备：理瓶机、倒瓶杀菌机、喷淋冷却系统、CIP清洗系统、UHT超高温瞬时灭菌、套标机、吹瓶机等。

Zhangjiagang City Bievo Machinery Co., Ltd. is a professional food and beverage machinery manufacturer. Bievo has its own special advantages in the research, design and manufacture, and offers technical support to customers. We also provide perfect after-sales service.

Our Beverage Machinery includes carbonated soft drink production lines; non-aerated beverage bottled filling production lines and juice/tea beverage/wine bottled/barreled filling production lines. You are welcome to cooperate with us.

Our main products:

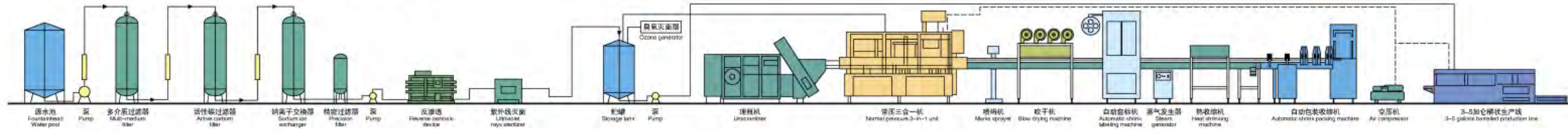
- Middle and small size mineral water and pure water production lines. The output is 2,000 to 36,000 bottles per hour.
- Juice and tea beverage machinery hot filling production lines. The output is 2,000 to 36,000 bottles per hour.
- Carbonated beverage machinery pressure filling production line. The output is 2,000 to 30,000 bottles per hour.
- Soy sauce, vinegar, edible oil filling production line. The output is 2,000-12,000 per hour.
- 3, 5-gallon barreled drinking water production line. The output is 60 -1200 barrels per hour.
- One gallon bottled drinking water production line. The output is 600-1200 bottles per hour.
- Soy milk, peanut milk beverage production line. The output is 0.5-20T per hour.
- Compound fruit and vegetable juice/powder processing equipment. The output is 1 to 20 tons per hour.
- Edible oil exclusive packaging production lines.
- Beverage machinery preprocessing equipment.
- Water treatment (mineral water, purified water, food process water) equipment. The output is 2-20T one hour.

Related equipment: bottle unscrambler, reversing bottle machine, spray cooling machine, enrichment equipment, CIP cleaning machine, UHT instantaneous sterilizer, labeling machine, blow molding machine

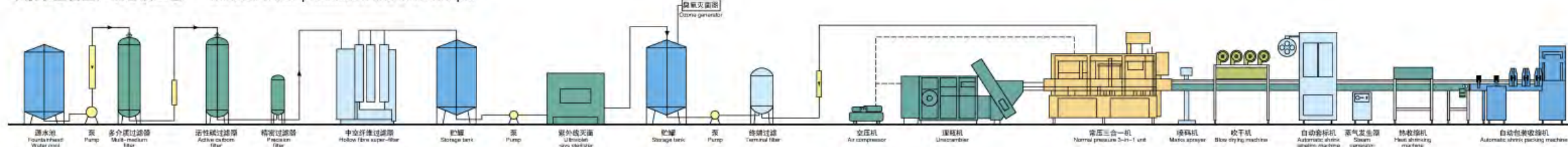


## 工艺流程图 Technology Flow Chart

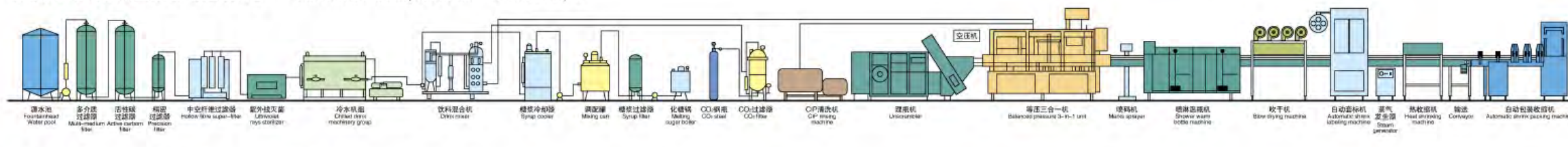
### 纯净水整套生产设备工艺 Pure water production line & technique



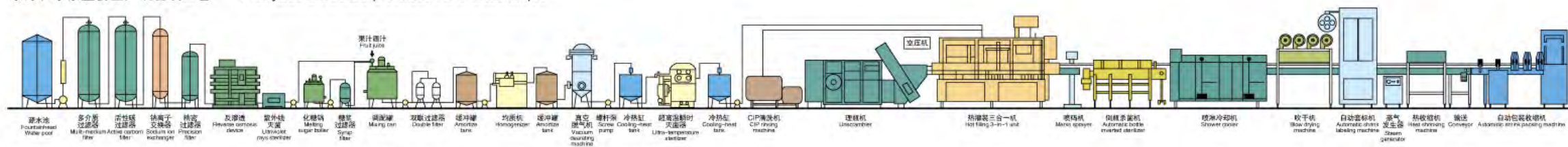
### 矿泉水整套生产设备工艺 Mineral water production line & technique



### 碳酸饮料(含汽饮料)整套生产设备工艺 Carbonated drink production line & technique



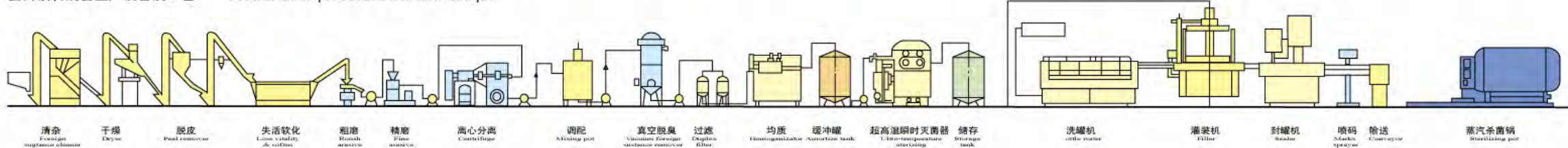
### 果汁、果茶整套生产设备工艺 Fruit juice & fruit tea production line & technique



### 茶饮料(乌龙茶、红茶、绿茶)整套生产设备工艺 Tea production line & technique



### 蛋白饮料成套生产设备工艺 Protein drink production line and thnique



## 饮料生产线 Beverage Production Line

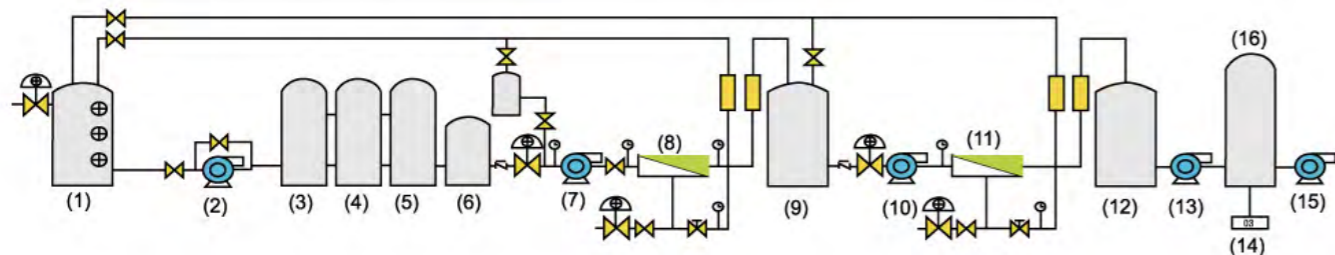


本系列生产线集冲洗、灌装、封口、套标、收缩膜包装为一体，适用于果汁饮料、茶饮料生产，同时简单调整部分部件，可用于矿泉水、纯净水的灌装生产，灌装机采用国际先进的微重力负压灌装技术，能进行快速、稳定的灌装，整机采用卡瓶颈悬挂工艺设计，更换瓶型更方便快捷省力；能满足95°以下热灌装技术要求；采用人机界面触屏控制，PLC电脑控制，变频器控制等先进技术，实现整条生产线自动化；与物料接触的零件均采用SUS304不锈钢材料，整机的电机、减速器、轴承、密封件及电器元件均采用国际知名厂家产品。

This series production line collect washing, filling, sealing, labeling, wrap packing in a body, is suitable in every kinds of fruit juice, tea drink production, simultaneously replace some spare parts, it may used in pure water, mineral water bottling. It uses the advanced micro negative pressure gravity filling type, filling quickly, steady, and equipped with consummate material recirculating system, may realize the backflow exhaust of fumes independently, won't let material contact the reduction material to make pollution and oxidation. This line can meet 95 C hot filling, it follow the technical requirements: filling valves and piping materials without access to health corner. This line adopt block bottle-neck hanging work state design, and adopt filling value rise drop design. The whole line is controlled by human-machine interface touch screen, PLC, transducer etc advanced control technology. It's osculant the drink material parts are adopt the high quality sus304 stainless steel, the machine main motor, reducer, mostly axletree, pressurize parts and ecectricity ware element, gas drive element etc are adopt famous international manufacture products. Output from 3000-24000 bottles per hour for user's choose.



## 水处理设备 Water Treatment System



- |                               |                                       |                                    |
|-------------------------------|---------------------------------------|------------------------------------|
| 1 源水罐 Raw water tank          | 7 初级高压泵 Primary High-pressure Pump    | 13 纯水输送泵 Pure Water Conveying Pump |
| 2 增压泵 Booster pump            | 8 一级反渗透装置 One Stage Reverse Osmosis   | 14 臭氧发生器 Ozone Generator           |
| 3 石英沙过滤器 Quartz sand filter   | 9 储水罐 Balanced Water Tank             | 15 纯水输送 Pure Water Conveyor        |
| 4 活性炭过滤器 Active carbon filter | 10 二级高压泵 Secondary High-pressure Pump | 16 臭氧混合塔 Ozone Mixing Tower        |
| 5 钠离子交换器 Sodium ion exchanger | 11 二级反渗透装置 Two Stage Reverse Osmosis  |                                    |
| 6 精密过滤器 Precision filter      | 12 纯水储罐 Pure Water Storage Tank       |                                    |



此水处理设备适用于纯净水、矿泉水及各种饮料加工需要的预处理水生产，能有效地去除水中的悬浮物，异味及颜色，同时能去除水中的有机物，微生物，氯化物，胶体颗粒及其他物质，另外，此设备能去除水中的钠离子，降低水的硬度以达到饮用水标准。

This water treatment system is mainly used to get pure water, mineral water, pre-treated water for all kinds of beverage. It can get rid of suspended matters and smell and color in raw source water, effectively also filter substance such as organics, microorganism, chloride, colloidal particles, and residual chlorine. Besides, this system filters can remove heavy metal ion to reduce hardness of the water, to make it reach to standard of drinking water.



## LP系列理瓶机 LP Series bottle unscrambler

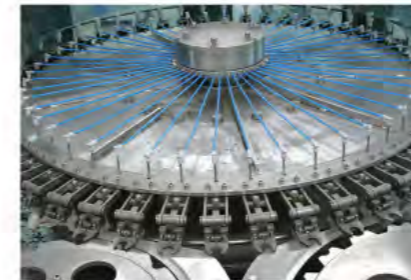
该设备适用于无序聚酯瓶的整理，散乱无章的瓶子经由提升机送进理瓶机存瓶圈内，靠转盘的推力，瓶进入瓶格内自行定位，通过翻瓶装置和气流作用，瓶被整理成瓶口向上直立，并经风送式输送系统输出进入下道工序。  
 本机采用PLC电脑控制，变频调速，自动化程度高，可以与各种灌装生产线连接。

This machine is suitable for unscrambling polyester bottles and make them in one line, then discharge them by vacuum conveyor, its features are as followed: PLC program controlling; digit show speed; automatic. High speed operation, easy to combine with all kinds of filler or filling production line.



型号	Model	LP-1	LP-2	LP-3
直径	Diameter(mm)	2450	2600	3000
产量	Production Capacity(bottle/h)	8000-10000	12000-15000	18000-24000
气源压力	Gas Source Pressure(Mpa)	0.7	0.7	0.7
耗气量	Gas Consuming Volume(M <sup>3</sup> /min)	0.4	0.6	0.8
适用瓶型	Suitable Bottle Type(mm)	瓶径(Bottle Diameter)Φ50-Φ90 瓶高(Heigh)150-290		
主电机功率	Main Motor Power(KW)	1.5	2.2	4
重量	Weight(kg)	3000	4000	6000
外形尺寸	Overall Dimension(LxWxH)(mm)	3100x2450x2200	3300x2600x2200	3700x3000x2200

## CGZ系列纯净水，矿泉水冲洗灌装封口三合一机组 CGZ Series Washing,filling,capping 3-in-1 Unit For Water



本系列设备在一机上实现冲瓶，灌装，封盖，缩短了物料与外界接触时间，提高了卫生条件，生产能力，经济效益，适用于纯净水、矿泉水聚酯瓶的灌装，产量从3000瓶到20000瓶每小时可供选择；采用变频器控制技术及产量指示功能来实现产量的调整。

This machine is a unique design combining the three machines of bottle washing, filling and capping in one to decrease main power, to save space and to diminish the air pollution among the three machines. It is applicable for mineral water and pure water filled in plastic bottles and capped with plastic caps, with optional capacity from 3000BPH to 20000BPH. It uses frequency changer to control the main machine motor. And it has an output number indicating function which is easy to control the adjustment of the output.



型号	Model	CGZ14-12-5	CGZ18-18-6	CGZ24-24-8	CGZ32-32-8	CGZ40-40-10
冲洗头数	Washing heads	14	18	24	32	40
灌装头数	Filling heads	12	18	24	32	40
封口头数	Capping heads	5	6	8	8	10
产量	Capacity(b/h)500ml	2000-4000	5000-6000	8000-10000	10000-15000	16000-20000
功率	Power motor(kw)	2.2	3.5	4.5	5.5	5.5

## DGZ系列含汽饮料等压灌装三合一机组 DGZ Series Full-automatic Washer, Filler And Capper Three-in-one Unit For Carbonated Drink



DGZ系列含汽饮料灌装三合一机适用于含汽饮料的塑料瓶或玻璃瓶的灌装，在一机上实现冲瓶、灌装，封盖，设计科学合理，外形美观，维修方便，悬挂式卡瓶口，更换瓶型方便，快捷省力，主机采用先进的PLC可编程自动控制，触摸屏，无瓶不送盖系统，卡瓶自动停机系统，整机运作时噪声小，关键电器元件采用国际知名品牌。

The DGZ carbonated drink filling monoblock is used to fill carbonated drinks into polyster or glass bottles. Washing, filling, sealing can be carried out on the same machine. The design of the machine is scientific and reasonable. The appearance is beautiful and the function is complete. Its operation and maintenance is convenient. Its automation is high. The advanced technology from Germany and Italy are employed. The speed of filling is fast and the liquid amount is controlled accurately. The filling device can be stopped automatically when there is no bottle or bottles are damaged. The advanced auto-washing technology is used in the system. Pneumatic valve and damped gears are used for bottle conveying, the noise is low and the whole machine runs smoothly with low noise. The magnetic torque is used for screw capping. The power of screw capping can be adjusted without steps. The power of the screw capping can also be fixed, and the caps will not be damaged, the capping is reliable. Horizon swirl air power caps sorting device is used to avoid damaging the surface of caps, and when there is a shortage of caps in the caps storage tank, an alarm signal will be generated and the caps will be fed automatically. The whole machine is controlled by PLC with touch-screen as the interface between human and machine.



型号 Model	DGZ14-12-5	DGZ18-18-6	DGZ24-24-8	DGZ32-32-8	DGZ40-40-10
冲洗头数 Washing heads	14	18	24	32	40
灌装头数 Filling heads	12	18	24	32	40
封口头数 Capping heads	5	6	8	8	10
产量 Capacity(b/h)500ml	2000-3000	4000-6000	7000-8000	8000-12000	12000-15000
功率 Power motor(kw)	2.2	3.5	4.5	5.5	5.5

## RGZ系列果汁，茶饮料热灌装三合一机组 RGZ Series Washer, Filler And Capper Three-in-one Unit For Fruit Juice Or Tea Drink



本设备集冲洗、灌装、封盖于一体，适用于各种果汁，茶饮料的灌装生产，经过简单调整部分零部件，本机同时也可用于纯水，矿泉水的灌装生产，采用微重力负压灌装技术，灌装更迅速、稳定、准确，设备配有完善的回流系统，避免饮料的二次污染及氧化；能满足95° 以下的热灌装技术要求，并配备了CIP清洗系统，能对液缸，管道等液体接触的地方进行清洗；采用人机界面触摸屏控制，PLC电脑控制，变频器控制等先进技术。

This series of machines integrate washing, filling and capping into one unit, can be used for different kinds of fruit juices/tea hot drink production. With only a few parts changed, the machine can also be used for mineral water filling. The advanced micro-negative pressure filling technology is used in this machine. The filling is quick, steady and accurate. The beverage feedback system is well designed, the gas can be fed back separately, having no contact with beverage, reducing the second time pollution and oxidation. This machine can meet all the technical requirements for hot drink filling below 95. All filling valves and beverage conducting pipes can be cleaned, and the automatic washing interface CIP is designed in the machine. Before capping, the RO water washing device is used to wash the bottle mouth to keep mould away from the bottle mouth. Magnetic torque is used for screw capping, the power of screw capping can be adjusted step-less. Constant power can be used to screw the plastic caps. The human-machine-interface touch-screen, the most advanced PLC control and frequency changing technologies are used in this machine.



型号 Model	RGZ14-12-5	RGZ18-18-6	RGZ24-24-8	RGZ32-32-8	RGZ40-40-10
产量 Production Capacity(500ml)(b/h)	4000	6000	10000	14000	18000
总功率 Total Power(kw)	4.68	5.18	6.58	8.18	9.2

## QF系列全自动5加仑桶灌装生产线 QF Series Full Automatic Barrel Filling Production Line



QF系列设备适用于5加仑桶饮用水灌装，集冲洗、灌装、封口于一体，是生产桶装纯净水、矿泉水，蒸馏水的理想设备，整机采用SUS304不锈钢材料，耐腐蚀，易清洗，电器元件采用西门子，欧姆龙等国际知名品牌，生产线采用气电程序控制，具有联锁、信号、自测等安全装置。

QF Series barrel machine is specially used for 5 Gallon barrel drinking water. This machine integrates washing/filling/capping into one unit. It is the good ideals for produce the mineral water/distilled water/pure water equipments. Whole machine are adopt the high quality stainless steel, Strong for erosion proof ability, easy to washing. Mostly electric components are adopted SIEMENS, OMRON etc famous company. Electric component adopt import Air TAC famous brand product. The machine is advanced in construction, occupying small area, steady in performance, high in produce efficiency, high in automatization degree. Easy in operation, which integrates machinery, electricity and pneumatics technologies together into one unit full automatic barreling machine.



热收缩机  
Shrinking machine

冲洗、灌装、封盖机  
washing/filling/capping machine

灯检  
Leak tester

全自动外刷机  
Automatic external brusher

全自动内刷机  
Automatic internal brusher

全自动拔盖机  
Automatic decapper

## BS-1拔盖刷桶机 BS-1 Pull Lid and Scrub Barrel Machine

适用于3加仑5加仑回收塑桶的拔盖及预刷洗。

Suitable for pulling lid and pre-scrubbing of 5 gallon, 3 gallon recovery plastic barrels.



产量	Treatment capacity	200-300b/h
功率	Power	1.1kw
外形尺寸	Overall dimension	800*800*1200mm
重量	Weight	110kg

型号 Model	QF-100	QF-200	QF-300	QF-400	QF-600	QF-1200
灌装头数 Filling Heads	1	2	2	3	4	8
容量 Volume(Gallon)	3&5	3&5	3&5	3&5	3&5	3&5
桶尺寸 Barrel Size(mm)	Φ270×490	Φ270×490	Φ270×490	Φ270×490	Φ270×490	Φ270×490
产量 Capacity(b/n)	60-100	120-240	250-350	400-450	600-800	1000-1200
耗气量 Gasconsumption(m/min)	0.37	0.37	0.6	0.8	1	1.8
电机功率 Motor Power(kw)	1.38	1.75	3.8	3.8	7.5	13.5
额定电压 Rated Voltage(V)	380V/50HZ	380V/50HZ	380V/50HZ	380V/50HZ	380V/50HZ	380V/50HZ
重量 Weight(kg)	680	800	1500	2100	3000	4500

## 3-10L 直线式灌装机 3-10L Linear Filling Machine

该设备适用于3-10L聚酯瓶水及食用油的灌装生产,集冲洗、灌装、封口为一体,整机设计合理,外形美观,操作简捷,维修便利,自动化程度高。

This series equipment is used in 3-10L bottle water and oil filling production. The equipment integrated washing, filling and capping together. It is well designed with good-looking appearance. In addition, it is easy to operate and convenient to repair, moreover, with high automation.



灌装重量	Filling Volume	PE,PP,PET塑料瓶 All shapes of PE,PP,PET Plastic bottles
瓶材质	Bottle Material	±2%
气源压力	Gas Source Pressure	0.6-0.8Mpa
气耗	Air Consumption	约50升/分钟 50L/min
水耗	Water Consumption	2-4米³/时 2-4m³/h
功率	Power (KW)	4.34

## 雪碧、可乐等含汽饮料自动冲洗、灌装、封口生产线 Sprite, Cola Etc. Gas Containing Drink Auto Washing, Filling And Sealing Production Line

该生产线包括QS全自动冲瓶机, DG等压灌装机、FXZ封盖机, SSJ系列输送系统, 主要部分采用不锈钢材质, 构造合理, 技术先进, 操作简单, 是中小型企业饮料厂的理想选择。

The production line include QS auto washer, DG balanced pressure filler, FXZ capping machine, SSJ conveyor system etc. The key parts are made of stainless steel, with the features of reasonable structure, advanced technology, easy in operation, widely used in carbonated drink filling, it's the ideal production line for middle and small beverage factory.



型号 Model	产量 Production	瓶高 Bottle Height	电机功率 Motor Power
QS-12 DG-12 FXZ-1	1000-2000b/h	160-300(mm)	3.13kw
QS-18 DG-18 FXZ-6	1500-4000b/h	160-320(mm)	4.45kw
QS-24 DG-24 FXZ-8	2000-5000b/h	160-340(mm)	4.45kw
QS-32 DG-32 FXZ-8	3000-8000b/h	160-340(mm)	5.95kw

## 果汁等不含汽饮料易拉罐灌装生产线 Can Juice (Non-carbonated Drink) Production Line

本生产线用于马口铁材质的三片罐, 易拉罐的冲洗、灌装、封口适用于果汁、功能饮料等不含汽饮料的易拉罐灌装。

This production line is mainly used for washing, filling and sealing of three pieces style pop-top cans made of tinplate. It is suitable for juice, energy drink etc. Non-carbonated drink filling and sealing into cans.



型号 Mode	QS-16洗罐机 QS-16 Can Washer	GFP-12灌装机 GFP-12 (GFP-16/24/32) filler	YLF-1封口机 YLF-1
产量 Production capacity	3000	1500-8500	2400
罐型 Bottle/can type	φ40-80	φ40-90 H50-340	φ50-67 H90-200
功率 Power(kw)	0.55	1.1	0.75
尺寸 Overall dimension(mm)	1900x530x1100	810x1050x2050	930x700x1850
重量 Weight(kg)	480	500	500

## 含汽饮料玻璃瓶灌装生产线 Glass Bottle Carbonated Drink Production Line



该生产线适用于可乐、雪碧, 含汽苏打水等含汽饮料的玻璃瓶灌装, 具有玻璃瓶冲洗, 灌装, 金属皇冠盖压盖的功能。

This production line is mainly used in washing, filling and sealing gas containing beverage into glass bottles such as carbonated drink, cola, iced tea and gas mineral water and etc.

## 易拉罐灌装机 Pop Can Filling Machine

该灌装机适用于铝制易拉罐，马口铁易拉罐及塑料易拉罐的灌装及封口，可以分为热灌装(果汁、茶饮料等)及等压灌装含汽饮料两种，具有封口质量高，操作稳定，外形美观，操作简捷，产量可控等优点，并可根据客户要求设计远程遥控系统，是饮料厂生产罐装饮料的最佳选择。

This filling machine is used for aluminum pop cans, tin cans and plastic cans filling and capping, which divides into hot filling and carbonated filling. It has many advantages like good-sealing quality, stable operation, elegant appearance, easy to operate and maintain and speed regulation of produce-speed. We could configure the long-distance control system as clients' needs, so it is the best choice for brewers and beverage factories.



型号 Model	产量 Capacity	功率 Power (kw)	重量 Weight (kg)	尺寸 Size (mm)
FG18-4	100 ~ 120cans/min ( 335ml )	5.5	3500	3200×2200×2800
FG32-6	280 ~ 300cans/min ( 335ml )	6.5	4200	3900×2500×3000

## BGF系列啤酒灌装封口二合一机组 BGF Series Beer Filling Capping 2-In-1 Machine



该设备适用于各种金属皇冠盖玻璃瓶的啤酒灌装生产，采用国际先进技术，设计科学合理，外形美观，操作与维护方便，自动化程度高，是啤酒生产商的理想选择。

It is used for filling and sealing various kinds of glass bottle with crown cap for beer filling production line.

The machine adopted the advanced international technology. Its design is scientific and reasonable, appearance is beautiful, operation and maintenance are convenient, and it's of high-automatic, so it is a good machine for choosing by the beer filling manufacturer.

型号 Model	BGF12/6	BGF18/6	BGF24/8	BGF32/8
产量 Production capacity(500ml)(b/h)	1000-1200	2000-3000	4000-5000	6000-8000
总功率 Total power(kw)	1.5	1.5	3.75	5.6
尺寸 Dimension(LxWxH)(mm)	1700x1100x2300	1830x1320x2300	1950x1580x2500	2100x1850x2500
总重量 Total weight(kg)	2000	2400	3000	3500

## TB系列全自动套标机 TB Series Sleeve Labeling Machine

本机是采用国际先进技术，对PET瓶(图、方)套上环标，并热收缩固定于瓶身特定位置上的机器，本机器结构紧凑，可用于不同方向，不同高度的生产线上，机械部分采用模块化的组合设计，使机器更趋合理，高度调整采用电机升降，更换物料更简便，独特的刀盘设计，使筒状薄膜卷切断更准确可靠。

This machine adopts international advanced technology; cover the circle label on the pet bottle. And then hot shrinking to fix on the position which bottle body is designed.

This machine's structure is compact, and suitable for the production line of different direction and different height.

The machinery part adopts combination designing of modularization, and makes the machine reasonable. The height adjustment adopts motor fluctuating; it is convenient to replace the material. The special cutter head designing, make the film-rolling cut more exactly and reliably.



型号	Model	SLM-100	SLM-150	SLM-250	SLM-350
产量	Capacity	100bottles/min	150bottles/min	250bottles/min	350bottles/min
功率	Power	Φ50~Φ90mm	Φ50~Φ90mm	Φ50~Φ90mm	Φ50~Φ90mm
适用标签材料	Suitable Label Material	PVC PET OPP OPS	PVC PET OPP OPS	PVC PET OPP OPS	PVC PET OPP OPS
标签厚度	Label Thickness	0.035~0.10mm	0.035~0.10mm	0.035~0.10mm	0.035~0.10mm
外形尺寸	Overall Dimension	2400x950x2100	2400x1000x2000	2440x1000x2200	2440x1000x2200
重量	Weight	450kg	550kg	600kg	700kg

## 全自动热收缩膜包装机 Automatic PE Film Shrink Wrapping Machine

- 特点:
- 1.采用PLC控制技术，功能稳定，控制精确
  - 2.全自动控制输送物料，整理，热缩及冷却
  - 3.薄膜输送采用传感器控制技术，以达到同步速度
  - 4.采用涡流风循环结构及三层热绝缘来节约电耗
  - 5.采用冷却及成型定位加快包装速度

Characteristics:  
It adopts the imported PLC programme automatic control. It has stable function and precise control.

It has automatic functions like conveying materials, unscrambling, shrinking and cooling & design finalizing flow.

The film conveying adopts the imported transducer control in order to reach stepless speed conversion.

It adopts the advanced spiral wind circulating structure and three-layer heat insulation to save energy.

Besides, it uses the enhanced cooling and design finalizing passage which can make product packing finalize the design more quickly and easy to be stored and transported.



尺寸	Overall Dimension(LxWxH)	5050x3300x2100
热收缩机尺寸	Heat Shrinking Passage Dimension(LxWxH)	3700x920x1800
最大包装尺寸	The Maximum Packing Dimension(LxWxH)	600x400x350
包装速度	Speed of Packing	8-12
输送带高度	Height of Conveying Belt	920(can be adjusted)
功率	Power of Working Electricity	380V 20KW Three-phase and Five-lines
工作压力	Working Pressure	0.6-0.8Mpa

## 喷码机 Inkjet Code Machine

- 1.可打印1-4行，字体大小可调
- 2.喷码速度100m/分，条形码30m/分
- 3.125ml墨水可喷印3000千万字符(3mm高)
- 4.可储存100条设置信息
- 5.适用于金属、塑料、玻璃、纸质等材料

It can print 1-4 lines, and the character height reaches 1.8mm, 3.0mm, 8.0mm, 17mm with combined big and small characters.

Printing speed reaches 100m/min, bar code 30m/min;

Environmental protection solvent free ink, 125ML is capable of printing 30 million characters (3mm high)

It is capable of storing 100 printing information, each information reaches 1600 characters

It is applicable for metal, plastic, glass, paper etc.



## TBA系列贴标机 TBA Series Labeling Machine



本机适用于药品、食品、饮料、日化等行业用瓶的单面，双面及侧面贴标，机器采用PLC控制技术，生产效率高，贴标位置精确合理，操作简捷，动力系统由3-5个伺服电机运作，速度可调，全自动调速装置，并配备安全保护装置。

This machine is suitable for pharmacy, food, beverage, daily chemical industry etc. all kinds of quadrate & flat bottles single side, double, and lateral labeling. Machine adopts PLC process control, photo-electricity bottle checking and label delivery. It is of high production efficiency, labeling precise and reliable, operation convenience, and wide adaptive scope etc. Start-up system: depend on 3-5 pole motor driving, electronic control speed, full automatic transmission device, electricity source place combine with highly precise density steel star gear, include automatic suited machinery safty device.

标签最大宽度	Max. Label Width	100mm
标签长度	Label Length	10mm~250mm
瓶高	Bottle Height	10mm~125mm
卷内径	Reel Inner Diameter	75mm
卷外径	Reel Outer Diameter	300mm
贴标速度	Labeling Speed	2500-4200 pcs./min.
外形尺寸	Overall Dimension	2400×1650×1540 mm(L x W x H)
电源要求	Power Required	110 or 220VAC, 50/60Hz, 1 Phase
电耗	Power Consumption	220VAC±5% 50Hz 168KW

## QHS系列饮料混合机 QHS Series Beverage Mixer

该设备采用日本最先进技术，在国内同种产品中处于领先地位，本混合机主要适用于各种碳酸饮料的混合加工，也可用于浆状饮料，发酵饮料等其他款饮料的混合加工，QHS系列饮料混合机是提高水、糖浆、和二氧化碳的比例而精心设计制作的，采用国外先进技术—静态混合器来减薄水层，增加碳化时间，确保饮料混合效果；采用二氧化碳回流脱氧，既节省二氧化碳，又达到脱氧目的，优质的水泵和西门子电器等组成完善的自动控制系统，具有动作协调，外形美观，清洗便利，自动化程度高等优点，适用于多种类型饮料的混合，如汽水，果汁饮料，可乐等软硬饮料。

The machine is made with the newest technology introduced from Japan. It is in the leading position comparing with similar products in China. The mixer is mainly suitable for mixing process of all kinds of carbonic acid drink. It is also used in mixing of slurry drink, fermented drink and other drinks.

QHS series drink mixer is designed and made for improving the proportion of water, syrup and carbon dioxide. It adopts foreign advanced technology—static mixer to lighten water layer, increase carbonizing time, assure mixing result and deoxygening. It adopts high-quality water pump and SEIMENS electrical equipment and other parts to form complete automatic control system. It has coordinating action, beautiful appearance, convenient washing, high automatic level and other advantages. It is suitable for mixing all kinds of drink, such as soda water, fruit juice, cola and other soft and hard drink.



QHS-5000



QHS-1500



QHS-3000

型号	Model	QHS-1500	QHS-3000	QHS-4000	QHS-6000
产量	Production Capacity	1500kg/h	3000kg/h	5000kg/h	7000kg/h
含气量	Carbon Dioxide Content	1.5-2.5	> 2.5	> 3.5	> 3.5
出水温度	Inlet Temperature Of The Chilled Wated	0-4°C	0-4°C	0-4°C	0-4°C
功率	Power	1.1kw	2.8kw	5.2kw	8.5kw
外形尺寸	Overall Dimensions	900×700×2000	1600×1300×2000	3000×1800×2200	500×2100×2500
重量	Weight	400kg	800kg	1800kg	2800kg

## DP系列倒瓶杀菌机 DP Series Bottle Inverse Sterilizer Machine

倒瓶杀菌机主要用于PET聚酯瓶包装的果汁，茶饮料等饮料热灌装后对瓶口及瓶盖内壁未经杀菌或高温处理的部分进行杀菌，本机主要由传送链系统，瓶体反转链系统，机架，瓶子反转导杆等构成；本机实现自动反转杀菌，不必增加任何热源，达到节能目的，机身采用SUS304材料制作，美观大方，使用方便，产量5000-20000瓶/小时，杀菌时间15-40秒可供客户选择。

It is mainly used in sterilizing PET bottle mouth and inside surface of caps. In which haven't been disinfected by thermal tea, Fruit juice which having been filled in PET bottle. It mainly consist of chief conveying chain system, support, bottle reversing chain system, bottle reversing guiding rod and bottle repositioning rod. Use its inner thermal medium to disinfect bottle mouth and caps without any other heat source. So it can save energy. The machine is fully made of SUS304 stainless steel, more convenient in operation.



## YWPA/YLPA系列温瓶机/喷淋冷却机 YWPA/YLPA Series Bottle Warming, Cooling Machine



本机用于耐热聚酯瓶果汁、茶饮料等热灌装饮料，或聚酯瓶碳酸饮料灌装生产线，可使高温灌装的茶饮料降温至36-40度，低温灌装饮料升温至36-40度，去除聚酯瓶表面的凝结水，保持瓶身干燥清洁，便于瓶装线后的贴标，装箱作业，产量5000-20000瓶/小时，喷淋时间15-20分钟。

This machine can reduce the temperature of hot filling drinks to 36°C-40°C, or increase the temperature of cold filling carbonic acid drinks to 36°C-40°C. It is used in PET bottles hot filling drinks and carbonic acid drinks cold filling production line. This machine can eliminate the condensed water on the external side of bottles, keep bottle clean and dry. This makes bottles easier for labeling and packaging. Productivity: 5000-20000 bottles/hour, spray time: about 15-20 minutes.



DJ系列打浆机  
DJ Series Beater



PS系列果蔬破碎机  
PS Series Fruit & Vegetable Breaker



LR系列立式冷热缸  
LR Series Vertical Type Cooling & Heating Device



调配罐  
Compounding Vat



LZ系列榨汁机  
LZ Series Screw Juicer



DJM系列胶体磨  
DJM Series Colloid Mill



GB系列高压均质机  
GB Series High Pressure Homogenizer



CIP清洗系统  
CIP Clean-in-Place



ZRP系列双联过滤器  
ZRP Series Double Filter



化糖锅  
Sugar Melting Pot



SQZ1200自动蒸汽杀菌锅  
SQZ1200 Automatic Steam Sterilizing Pot



CQ系列夹层锅  
CQ Series Double-Layer Pot



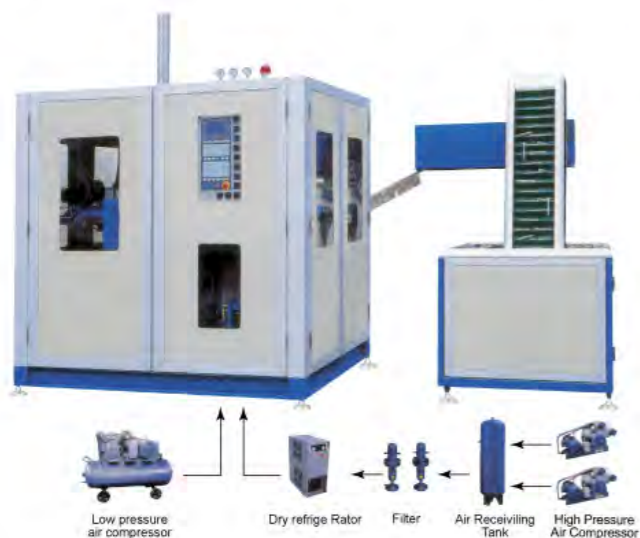
UHT系列超高温瞬时灭菌机  
UHT Series Ultra Temperature Instantaneous Sterilizer



管式杀菌机  
Tube Sterilizer

## BV-4全自动旋转式吹瓶机

### BV-4 Full Automatic Rotating Type Blow Molding Machine



BV-4吹瓶机广泛用于生产矿泉水瓶、含汽饮料瓶、杀虫剂瓶、油瓶、化妆品瓶、广口瓶及热灌装瓶等。由自动提升机将瓶胚带入生产线，经过石英灯加热瓶胚达到吹瓶目的，低投资，高效率，操作安全快速，维修维护方便简捷。

BV-4 stretch blow molding machine is suitable for producing PET/PC/PP and PE, plastic containers and bottles in all shapes. It is widely used to produce the carbonated drink bottle, mineral water, pesticide bottle, oil bottle, cosmetics, wide-mouth bottle and hot filling bottle, etc. Feeding system carries the preforms by robot automatically. Infrared oven heater adopts the quartz lamp to heat the PET tube. Fully automatic process with low investment, high efficiency, quick and safe operation, easy for trouble-shooting, maintenance and other benefits.

## BV系列半自动吹瓶机

### BV Series Semiautomatic Bottle Blow Molding Machine



BV系列半自动吹瓶机适用于生产PET瓶；容量10-2000ml，广泛用于矿泉水瓶，含汽饮料瓶，化妆品瓶，食用油瓶等。

BV series heat-resistant semi-automatic bottle blow molding machine is suitable for producing any shapes of PET containers and volume is from 10-2000ml. It is widely used to produce mineral water bottles, carbonated beverage bottles, cosmetic bottles, oil bottles etc. Adopting double crank connecting bar clamping and clamping mould is stable and fast, Adopt for infra-red rotary oven and heated equally. The machine is also equipped with muffler and different parts of refueling system. The machine can be operated in the

step-by-step mode and the semi-auto mode. The machine is small with low investment, It's easy and safe to be operated by one person.

## 瓶胚及瓶盖注塑机

### PET Bottle Preform And Cap Injection Molding Machine

该设备用于生产PET瓶胚及瓶盖，设计合理，操作方便，自动化程度高。电器元件均采用国际知名品牌。

This machine is designed for PET bottle preform and caps, with molding cycle less than 10s, full hydraulic mold clamp system, two level injection unit shorter the perform time, the main electric system control use SIEMENS, hydraulic system use Bosch Rexroth, pneumatic system and temperature system with schneider, all the parts are of high quality, it is ideal machine for beverage manufacturer.



## 全自动中空吹塑成型机

### Hollow Extrusion Blow Molding Machine

该设备用于生产HDPE,ABS,PP等材质的油桶，工具箱，塑瓶等，采用自动测漏，自动去飞边等装置，工作效率高，操作简捷；并采用液压传动系统，能有效的节能降耗。

This machine can be used for producing drums, tool boxes and bottles etc. Its control system adopts closed loop control imported from Europe and hydraulic system is pressure-flow double proportional control equipped with variable plunger pump to ensure fast and smooth operation of the machine and energy consumption of the hydraulic system can be reduced by 30% or above, saving considerable electricity. Applied material: HDPE, ABS, PP, PE, PVC, etc. Products: oil bottles, barrels, milk, shampoo bottles and so on.

