



百特科技



公司官方网站

## 南通百特新材料科技有限公司

Nantong Baite New Materials Technology Co. Ltd

电话/Tel: 0513-88783028

传真/Fax: 0513-88783073

网址/Web: [www.ntbt.com](http://www.ntbt.com)

邮箱/E-mail: [ntbt1116@163.com](mailto:ntbt1116@163.com)

地址/Add: 江苏省海安市经济开发区开发大道16号

No. 16, Development Avenue, Economic Development Zone, Hai'an City, Jiangsu Province

## 南通百特新材料科技有限公司

Nantong Baite New Materials Technology Co. Ltd

质量第一 · 管理规范 · 勇于开拓

INSULATION MATERIALS

绝缘材料专业制造商

海纳百川  
特立独行



INSULATION MATERIALS  
绝缘材料专业制造商

目录 CONTENT

企业篇

Enterprise Chapter

企业简介	01
Enterprise Introduction	
企业文化资质	03
Honorary qualifications	
企业设备	05
Environmental equipment	
品质与应用	07
Quality and Application	

产品篇

Products Chapter

菱格点胶纸	09
环氧涂布绝缘纸	10
菱格点胶AMA	11
菱格点胶DMD	12
网格布	13
预浸DMD	14
工字撑条	15
复合PET围板	16
SHS/NHN	17
NMN6640	18
NHN6650	19
环氧树脂板	20
油道撑条帘	21
电磁线包绕分切带	22
绝缘纸筒	23
电工绝缘纸板	24
层压木加工件	25
220KVA以下绝缘成型件	26
合作客户	27
Cooperative clients	
企业愿景	28
Corporate Vision	



## COMPANY Profile 企业简介

南通百特新材料科技有限公司

占地面积

 **50** 亩  
area covered

南通百特新材料科技有限公司位于江苏省海安开发区立发大道南侧，为长江三角洲“上海、南京 1.5 小时经济圈”重要枢纽位置，交通十分便利。公司以品质、领先、服务为核心竞争力，立足于科技创新。公司注册资本 1000 万元人民币，占地 50 亩，总投资 6000 万元人民币，拥有一流的自动化生产设备，年设计生产能力 8000 万。

企业总投资

 **6000** 万元  
Enterprise investment

公司主要从事生产 220kv 及以下变压器线圈、组装用的纸筒、角环、层压木等成型绝缘件；电缆纸、点胶纸、DMD 预浸布、电工纸板、复合围板、分切绝缘纸、SHS、NHN、LHL 等 H 级绝缘材料以及变压器的销售。产品远销日本、台湾、韩国、西班牙、德国，阿联酋等十几个国家和地区，并为国内 600 多家变压器，电抗器生产厂家配套，深受国内外用户的好评。现有员工 100 余人，年销售 8000 万元人民币以上。

年设计生产力

 **8000** 万元  
Annual productivity

公司凭借雄厚的技术力量、先进的生产装备、完善的检测手段、严格的质量控制、热情周到的售后服务，为顾客提供质量可靠的绝缘材料；热忱欢迎广大新老客户来电来函进行洽谈。百特人以诚信为本，以质量生命的经营理念，满足您的需求，超越您的期待！

The company is mainly engaged in the production of molded insulation components such as 220kV and below transformer coils, paper tubes for assembly, corner rings, laminated wood, etc; Sales of cable paper, adhesive tape, DMD prepreg, electrical cardboard, composite enclosure, cut insulation paper, H-grade insulation materials such as SHS, NHN, LHL, and transformers. The products are exported to more than ten countries and regions such as Japan, Taiwan, South Korea, Spain, Germany, and the United Arab Emirates, and are supported by over 600 domestic transformer and reactor manufacturers, receiving high

praise from domestic and foreign users. There are currently over 100 employees with annual sales of over 80 million RMB. The company relies on strong technical strength, advanced production equipment, comprehensive testing methods, strict quality control, and enthusiastic and thoughtful after-sales service to provide customers with high-quality and reliable insulation materials; Warmly welcome new and old customers to call and write to us for discussion. The business philosophy of Baite people is based on honesty and quality, meeting your needs and exceeding your expectations!



# QUALIFICATION HONOR

资质荣誉



## COMPANY CULTURE 企业文化

南通百特新材料科技有限公司自创办之日起就注重企业文化建设，只有把企业文化变为企业的精神去引导每一名员工向着正确的方向发展，齐心协力才是建立企业基业长青的根本大计。为此，公司将对多年来的发展精髓总结为百特人的企业文化理念，让百特人矢志不忘，孜孜探索追求！

## COMPANY PHILOSOPHY 企业经营理念

- ◆ 顾客至上
- ◆ 服务至上
- ◆ 规范生产
- ◆ 安全生产

## COMPANY TENET 企业宗旨

- ◆ 坚持以人为本，做好细节管理；
- ◆ 注重科技发展，完善质量体系；
- ◆ 努力开拓市场，追求良好的效益；
- ◆ 以优质的品质和信誉取得客户满意。

## COMPANY TALENT CONCEPT 企业人才观

- ◆ 如果您拥有聪明才智，请尽情施展；
- ◆ 如果您才智平平，请吃苦流汗；
- ◆ 如果你既无才智，又不愿吃苦，请你离开。

## COMPANY VALUES 企业价值观

- ◆ 行动，比思想还能检验价值。



# TECHNOLOGICAL PROCESS

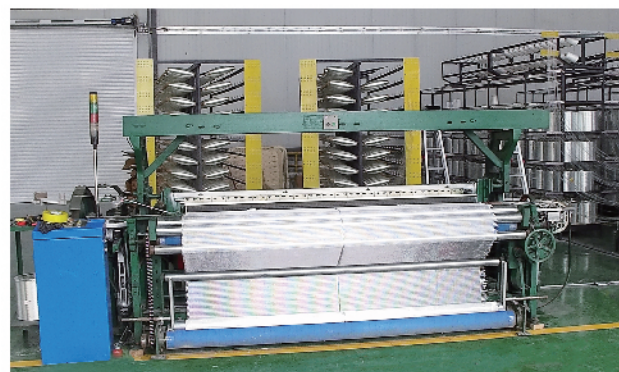
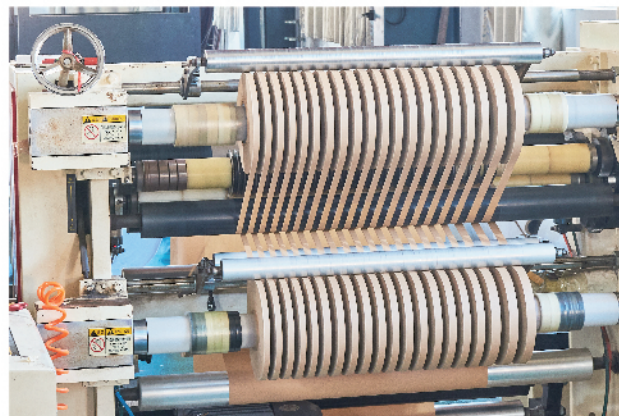
## 生产设备

多年来，引进了多项先进生产技术和设备，每年投入大量资金进行技术改良和研发，能满足客户对不同种类和用途产品的需求。

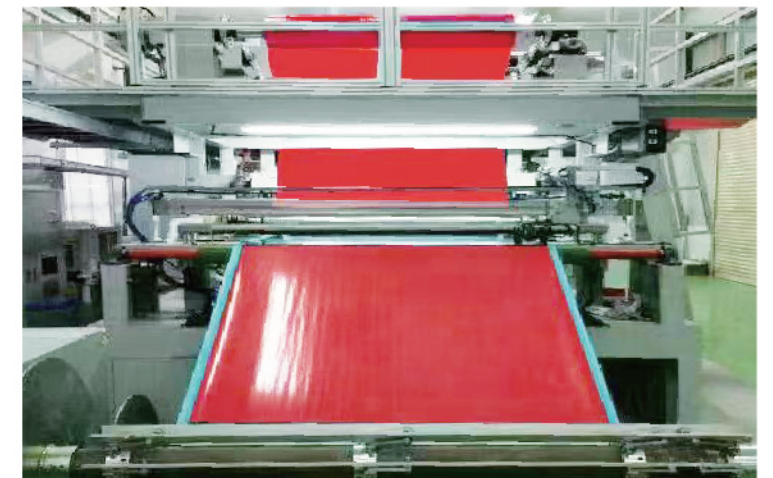
品质保证是我们的生存之本，客户满意是我们的发展之道，我们从客户的需求出发，以优良的产品和服务实现客户的满意。

Over the years, we have introduced multiple advanced production technologies and equipment, and invested a large amount of funds annually for technological improvement and research and development, which can meet the needs of customers for different types and uses of products.

Quality assurance is our foundation for survival, and customer satisfaction is our path to development. We start from customer needs and achieve customer satisfaction with excellent products and services.



10 YEARS  
EXPERIENCE  
SERVICE





# QUALITY COMMITMENT

品质承诺

“

质量是企业的生命  
是一个企业整体素质的展示

Quality is the life of an enterprise, is a display of the  
overall quality of an enterprise

”

南通百特新材料科技有限公司一直非常注重产品质量的保证与提高，企业建立了完整的、规范的生产流程、生产操作标准、产品验收标准等体系；在产品质量方面，公司安排技术人员现场督促和落实管理，并定期不定期的召开质量检查会议，实行质量汇报总经理直通车制度，从而有效地提升了产品质量。

Nantong Baite New Material Technology Co., Ltd. has always attached great importance to production To ensure and improve product quality, the enterprise has established a complete and standardized production system Production process, production operation standards, product acceptance standards, and other systems; In terms of product quality, the company arranges technical personnel to supervise and implement on-site management Organize and hold quality inspection meetings regularly and irregularly to implement- The quality reporting system of the General Manager's direct train has effectively improved product quality.



## 行业应用 Industry applications



### 供应600+

变压器、电抗器生产厂家

#### 干变式变压器

预浸DMD、F级DMD、SHS、NMN、NHN、环氧板、硅胶板均可应用与干式变压器。

Pre impregnated DMD, F-grade DMD, SHS, NMN, NHN, epoxy board, and silicone board can all be applied to dry type transformers.



#### 油浸式变压器

电缆纸、点胶纸、DMD、热收缩带、无纬带、电工纸板、油道撑条、皱纹纸管可应用于油浸式变压器。

Cable paper, adhesive tape, DMD, heat shrink tape, weft free tape, electrical cardboard, oil duct braces, and corrugated paper tubes can be applied to oil-immersed transformers.

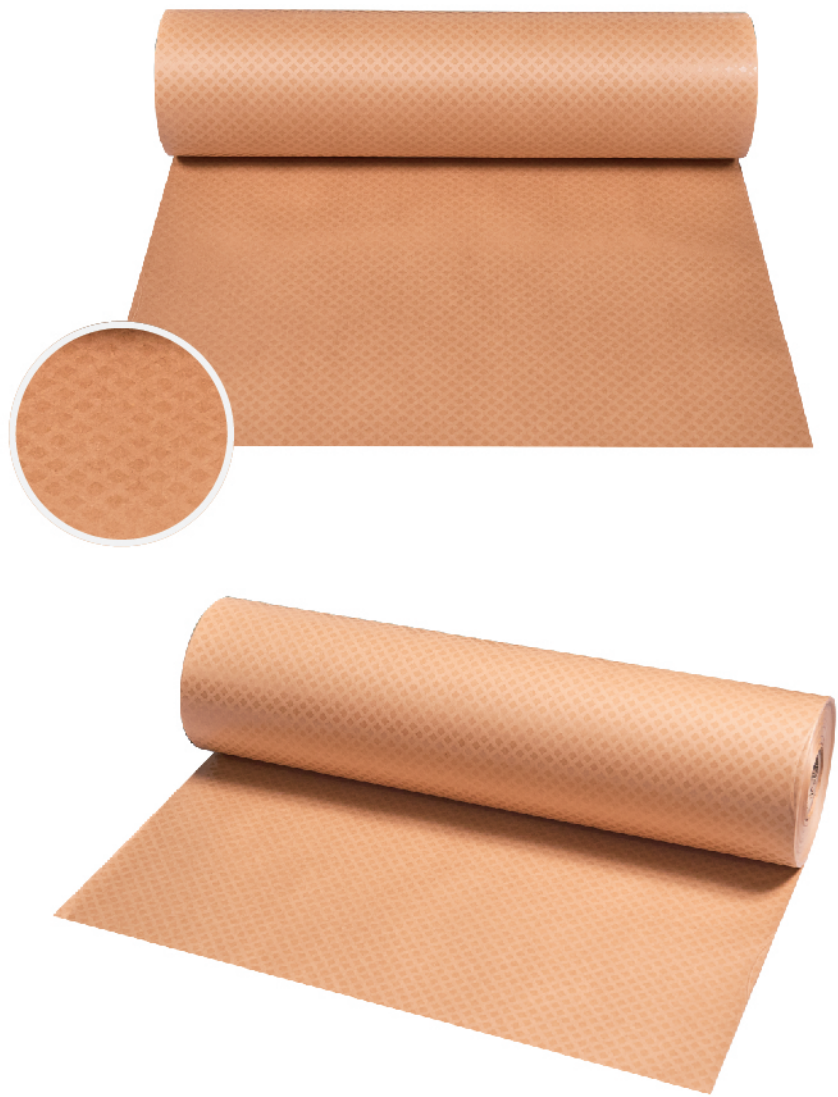


#### 电抗器

全胶纸、F级DMD、NMN、LHL、PMP、网格布、B级DMD、电工纸板、复合PET围板可应用于电抗器。

Full adhesive paper, F-grade DMD, NMN, LHL, PMP, grid cloth B-grade DMD, electrical cardboard, and composite PET enclosure can be applied to Reactor.





复合类绝缘件系列

菱格点胶纸



菱格点胶纸

【产品介绍】

点胶纸以电缆纸为底材，将特种改性环氧树脂呈菱格状涂覆在电缆纸上而成的一种绝缘材料。使线圈有非常好的抗轴向短路应力的能力;提高线圈的永久对热和力的抗冲击能力，有利变压器的寿命和可靠性。产品广泛地用于油浸式电力变压器的层间绝缘及匝间绝缘。

Dispensing paper is an insulating material made by coating a special modified epoxy resin in a rhombus shape on cable paper using cable paper as the substrate. Make the coil have excellent resistance to axial short circuit stress; improve the permanent impact resistance to heat and force of the coil, which is beneficial to the life and reliability of the transformer. The product is widely used for interlayer insulation and interturn insulation of oil immersed power transformers.



技术参数							
基材厚度		mm	0.08±0.005	0.13±0.007	0.18±0.010	0.20±0.010	0.25±0.010
单面胶粘剂厚度		μm	6~12				
粘结强度	常 态	kpa	≥650				
	100℃±2℃		≥400				
拉伸强度	纵 向	N/10mm	≥60	≥110	≥160	≥180	≥230
	横 向	宽	≥30	≥50	≥70	≥80	≥100
撕裂强度	纵 向	nN	≥450	≥900	≥1350	≥1500	≥2000
	横 向		≥500	≥1000	≥1500	≥1700	≥2300
击穿电压	空气中	kv	≥0.88	≥1.37	≥2.00	≥2.10	≥2.25
	油 中		≥4.40	≥7.00	≥9.00	≥9.80	≥11.50



复合类绝缘件系列

环氧涂布绝缘纸



环氧涂布绝缘纸

【产品介绍】

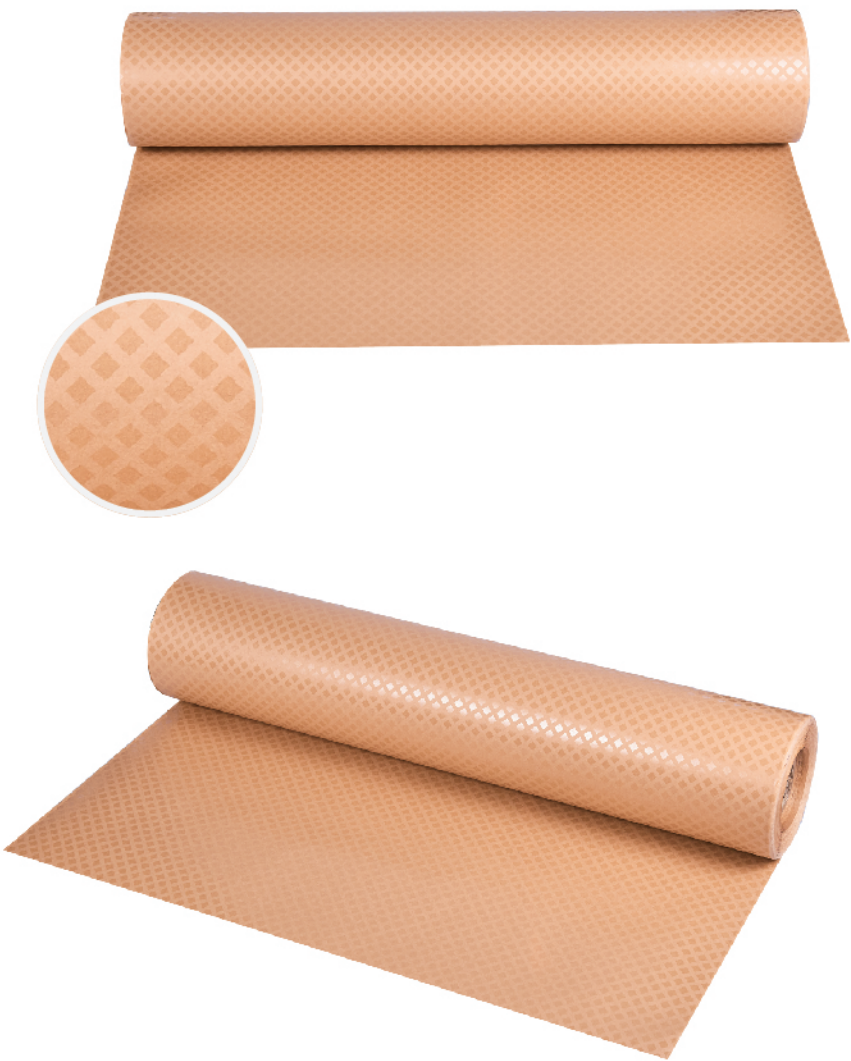
该产品是将特种改性环氧树脂涂覆在电工绝缘纸上的绝缘材料。产品广泛地用于油浸式电力变压器的层间绝缘及匝间绝缘，使用时涂覆层在线圈干燥过程中在一定温度时开始熔化，产生粘附作用，随着温度的升高又开始固化，使绕组的相邻各层可靠地粘合成一个固定单元。环氧树脂的粘强度足以防止短路时绕组各层的位移，从而保证了绝缘结构长期的电气和力学性能。

This product is an insulating material coated with a special modified epoxy resin on electrical insulating paper. The product is widely used for interlayer insulation and interturn insulation of oil immersed power transformers. When used, the coating layer begins to melt at a certain temperature during the coil drying process, producing adhesion. As the temperature rises, it begins to solidify again, making the adjacent layers of the winding reliably adhere to a fixed unit. The adhesive strength of the epoxy resin is sufficient to prevent the displacement of each layer of the winding during a short circuit, thereby ensuring the long-term electrical and mechanical properties of the insulation structure.



技术参数							
基材厚度		mm	0.08±0.005	0.13±0.007	0.18±0.010	0.38±0.020	0.50±0.030
基材紧度		g/cm³	0.85~1.10				
单面胶粘剂厚度		μm	10~15				
水分		%	4.0-8.0				
吸油性		%	≥60				
粘结强度	常态	kpa	≥60				
	100℃±2℃						
拉伸强度	纵向	N/10mm	≥60	≥110	≥160	≥180	≥230
	横向	宽	≥30	≥50	≥70	≥80	≥100
撕裂强度	纵向	nN	≥450	≥900	≥1350	≥1500	≥2000
	横向		≥500	≥1000	≥1500	≥1700	≥2300
击穿电压	空气中	kv	≥0.88	≥1.37	≥2.00	≥2.10	≥2.25
	油中		≥4.40	≥7.00	≥9.00	≥9.80	≥11.50
产品固化条件		加热至90C±5C,保持3小时后升温至125±5C,保持6小时的条件下固化					





复合类绝缘件系列

菱格点胶AMA



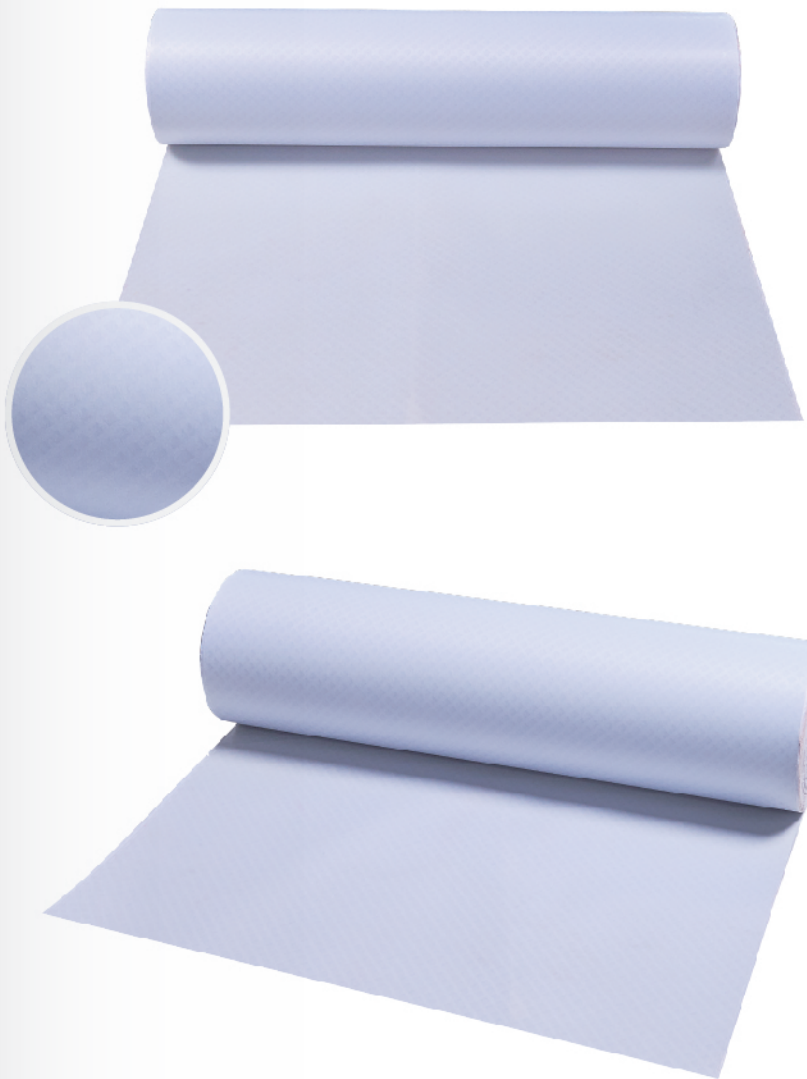
菱格点胶AMA

【产品介绍】

AMA为聚酯薄膜与两层进口优质电缆纸复合而成，再将特种改性环氧树脂呈菱格状均匀涂覆于AMA上而成的新型电工绝缘材料。主要用于油浸式变压器代替原有绝缘材料，增强层间绝缘性能。

AMA is a new type of electrical insulating material that is composed of polyester film and two layers of imported high-quality cable paper, and then uniformly coated with a special modified epoxy resin in a rhombus shape on AMA. It is mainly used for oil immersed transformers to replace original insulation materials and enhance interlayer insulation performance.

技术 参 数				
项 目		单 位	指 标	
外观		—	双面具有均匀的菱格涂层	
基材厚度		mm	0.15±0.01	0.20±0.02
单面胶黏剂厚度		μm	7.5—15	
粘结强度		KPa	≥580	
拉升强度	纵向	N/10mm	≥100	≥120
	横向		≥80	≥100
空气中击穿电压		kV	≥6	≥9
对变压器油影响		-	无污染	



复合类绝缘件系列

菱格点胶DMD



菱格点胶DMD

【产品介绍】

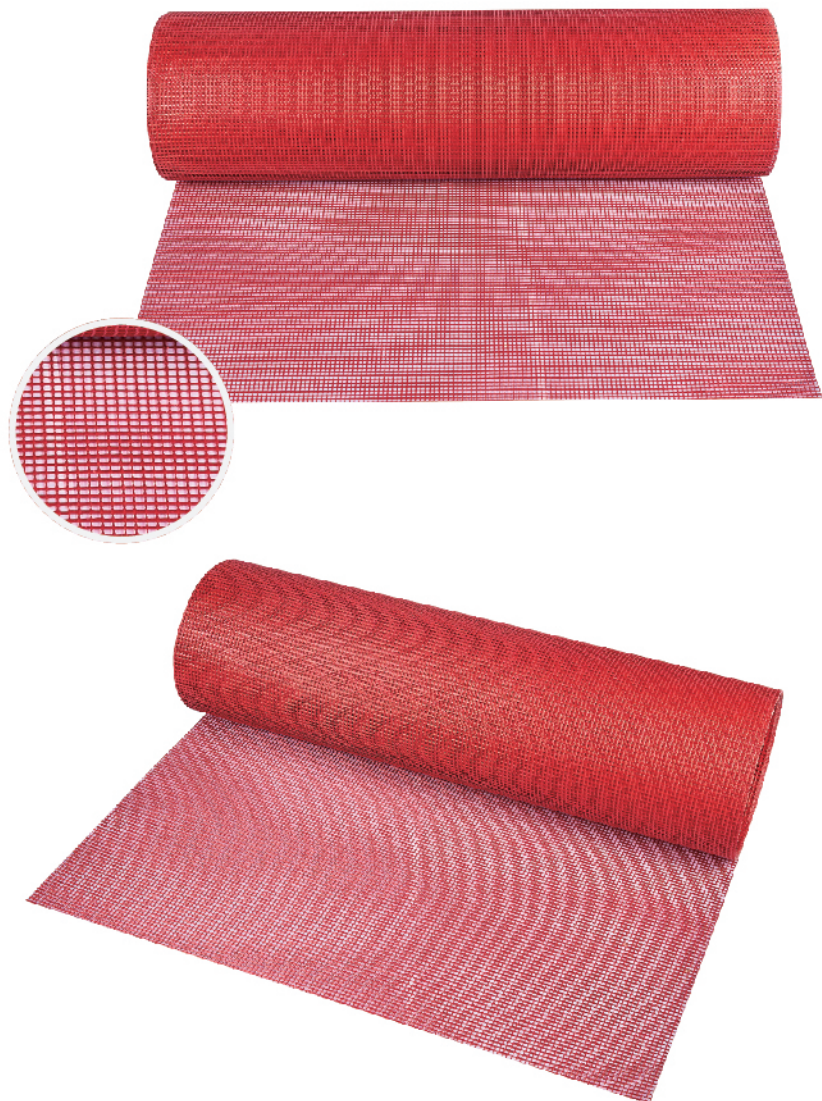
菱格点胶DMD是将特种改性环氧树脂呈菱格状涂覆在DMD上的绝缘材料。广泛地应用于油浸式电力变压器的层间绝缘及匝绝缘。使用时涂覆层在线圈干燥过程中在一定温度时开始熔化，产生粘附作用。随着温度的升高而开始固化，使绕组的相邻各层可靠地粘合成一个固定单元。环氧树脂的粘合强度足以防止短路时绕组各层的位移，从而保证了绝缘结构长期的机械电气性能。

Dispensing paper is an insulating material made by coating a special modified epoxy resin in a rhombus shape on cable paper using cable paper as the substrate. Make the coil have excellent resistance to axial short circuit stress: improve the permanent impact resistance to heat and force of the coil, which is beneficial to the life and reliability of the transformer. The product is widely used for interlayer insulation and interturn insulation of oil immersed power transformers.



技术 参 数								
性能		单位	要 求					
标称厚度		mm	0.10	0.13	0.15	0.18	0.20	0.30
厚度偏差		%	±15					
标称定量		g/m²	115	155	190	215	250	300
定量偏差		%	±12					
拉伸强度	纵向未折	N/10 mm	≥90	≥100	≥135	≥150	≥180	≥220
	横向未折		≥60	≥70	≥90	≥100	≥120	≥140
	纵向弯折		≥70	≥80	≥100	≥110	≥140	≥170
	横向弯折		≥40	≥50	≥60	≥70	≥80	≥100
伸长率	纵向未折	%	≥3				≥5	
	横向未折		≥10				≥13	
击穿电压	未弯折	kV	≥6					
	弯折后		≥5					
温度指数		—	≥120					





注：下述为常规的网格布，特殊规格的网格布可根据用户要求生产。

技术参数														
指标名称	单位	参数												
标称厚度 (±10%)	mm	0.35	0.4	0.5	0.6	0.8	1	1.2	1.5	1.6	2	2.2	2.4	2.5
每卷标称长度 (±0.5m)	m	100	100	100	100	100	50	50	50	40	35	35	35	35
宽度	m	≤1.2												
网孔尺寸 (经×纬)	mm	4*4	4*4	4*4	4*4	4*4	5*4	5*4	6*5	6*5	10*7	10*7	10*7	10*7
胶含量	%	12月18日												
拉伸破坏负荷	N	600	800	800	900	1000	1500	1850	3000	3400	4200	4800	5300	5300
沿面击穿电压	kv	≥18												
沿面电阻	Ω	≥1.0×10 <sup>13</sup>												
耐温等级	级	F,H												
吸水率	%	≤3												
色泽		本色、红色等根据用户要求定												
最小径向卷绕直径	mm	50			100			150						

复合类绝缘件系列

网格布

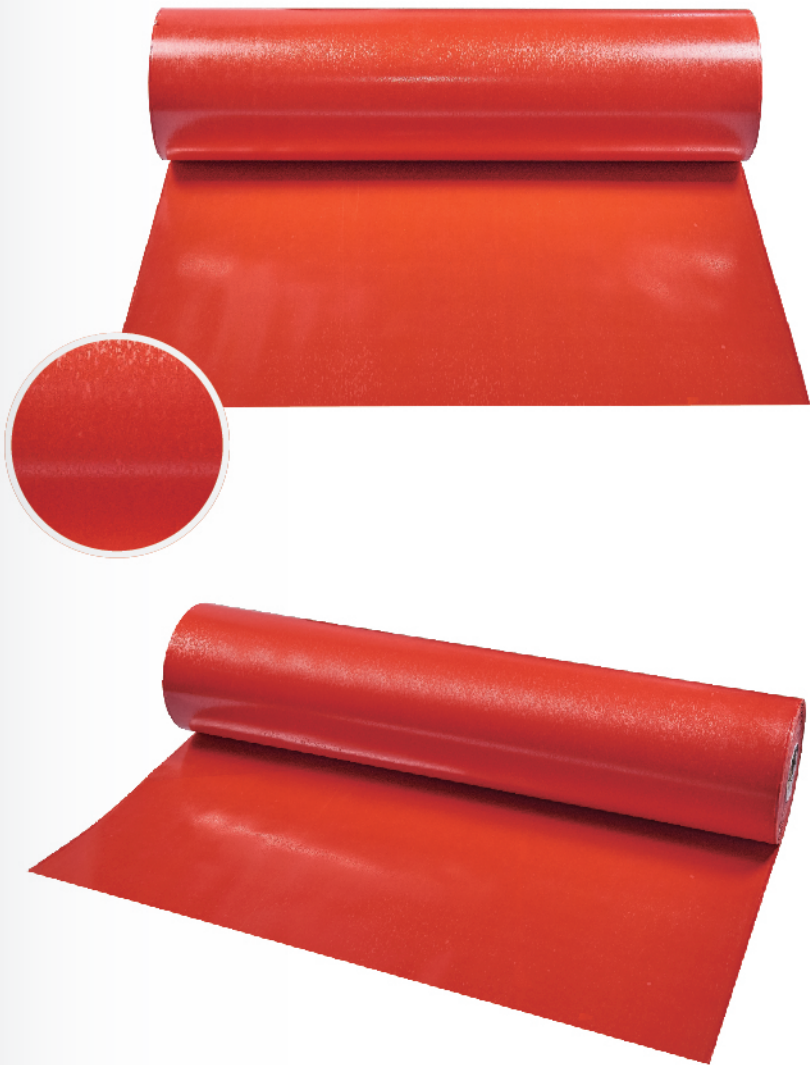


网格布

【产品介绍】

环氧玻璃纤维网格布应用于带填料浇注的干式变压器线圈、电抗器线圈中，用于线圈的内外包覆和层间绝缘，它与浇注线圈的环氧树脂牢固地结合在一起，网格布能增强浇注线圈的防开裂性能，好比混凝土中的钢筋作用，它可防止浇注线圈由于冷热效应以及线圈突发短路时的巨大电力引起的线圈外绝缘层开裂，大大提高了线圈的整体机械强度；用于层间绝缘的网格布作为线圈层间的主绝缘，能防止线圈内部的开裂，而且能改善浇注的透彻性、一体性，是玻纤带、DMD的理想替代产品。

Epoxy glass fiber mesh cloth is used in dry-type transformer coils and reactor coils cast with fillers for internal and external cladding and interlayer insulation of the coils. It is firmly bonded to the epoxy resin of the cast coil. The mesh cloth can enhance the anti cracking performance of the cast coil, similar to the role of steel bars in concrete. It can prevent the casting coil from cracking the outer insulation layer of the coil due to the cold and heat effects and the huge electrical force caused by the sudden short circuit of the coil, greatly improving the overall mechanical strength of the coil; The mesh cloth used for inter-layer insulation serves as the main insulation between the layers of the coil, which can prevent cracking inside the coil and improve the transparency and integrity of the casting. It is an ideal substitute for glass fiber tape and DMD



技术参数							
指标名称	单位	指标值					
标称厚度	mm	0.15	0.18	0.2	0.25	0.3	0.4
厚度偏差	mm	±0.02		±0.03			±0.04
宽度偏差	mm	±1					
拉伸强度 (纵向未折)	N/10mm	≥70		≥80		2100	
可溶性树脂含量	g/m <sup>2</sup>	245					
挥发物含量	%	≤1.5					
击穿电压	Kv	≥7		28		≥10	
拉伸剪切强度	MPa	23					
温度指数(T·1)		2155					
外观		表面应光洁、平整、厚度均匀，无杂质、无折伤、起泡、皱纹、破洞等问题。产品应具有柔软性，开卷时不应有粘结现象。					
尺寸	mm	长度：预浸布成卷供应，每卷外径不小于200mm,每卷长度不小于50m,重量不小于20公斤，每卷料卷段头不超过2段，每段不小于5m,段头处有明显标记。 宽度：预浸布每卷宽度要一致。宽度可根据用户要求分切成各种规格尺寸，范围在10- 1000mm之间，公差±1.0mm。					
贮存要求		产品应存放在40℃以下，干燥、洁净和通风良好的库房中，不得靠近火源、热源和受日光照射。产品贮存为6个月。					

复合类绝缘件系列

预浸DMD



预浸DMD

【产品介绍】

F级环氧树脂预浸DMD由聚酯薄膜聚酯纤维非织布柔软复合材料，浸渍耐热环氧树脂固化而成。替代进口耐热环氧树脂不织布的预浸树脂不织布 (HTEPP)，具有优良的电气性能、耐热性、阻燃性、室温下贮存期长，可作为干式变压器低压线圈层间绝缘和F级电机槽绝缘和相间绝缘。

Class F epoxy resin prepreg is made of polyester film, polyvinyl acetate fiber, nonwoven soft composite material, impregnated with heat resistant epoxy resin and cured. The prepreg resin nonwoven fabric (HTEPP), which replaces the imported heat-resistant epoxy resin nonwoven fabric, has excellent electrical properties, heat resistance, flame retardancy, and long storage life at room temperature. It can be used as interlayer insulation for low-voltage coils of dry-type transformers, as well as Class F motor slot insulation and interphase insulation.





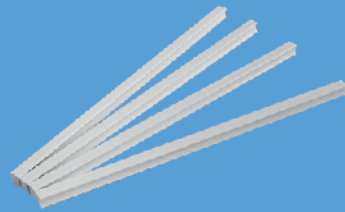


常用规格：4\*6/4\*8/4\*10/6\*6/6\*8/6\*30/8\*8/8\*10/10\*12/12\*12/12\*14/14\*16/16\*18；规格可根据客户要求定制。

技术参数					
项 目		技术要求	观察或测量结果	判定	备注
外观		试样表面光滑，无气泡、败纹、裂纹 极融位，无擦伤压痕、污点，允许有 少量色斑	试样表面光滑，无气泡、放纹、裂纹 及跳纱，无擦伤、压痕、污点，有少 量色斑	符合要求	
密度	g/cm³	1.8-2.0	1.924	符合要求	试验条件/浸渍法
拉伸强度		≥100	165	符合要求	试验条件/标黑/试验速度
弯曲强度		≥150	473	符合要求	试验条件/标距/试验速度
前切强度		≥70	73	符合要求	试验条件/常态/试验速度
击穿 电压	kV	≥45	59.6	符合要求	试验条件/常态/ 空气中/平板电极
			58.1		
			56.7		
			58.6		
			57.3		

复合类绝缘件系列

工字撑条

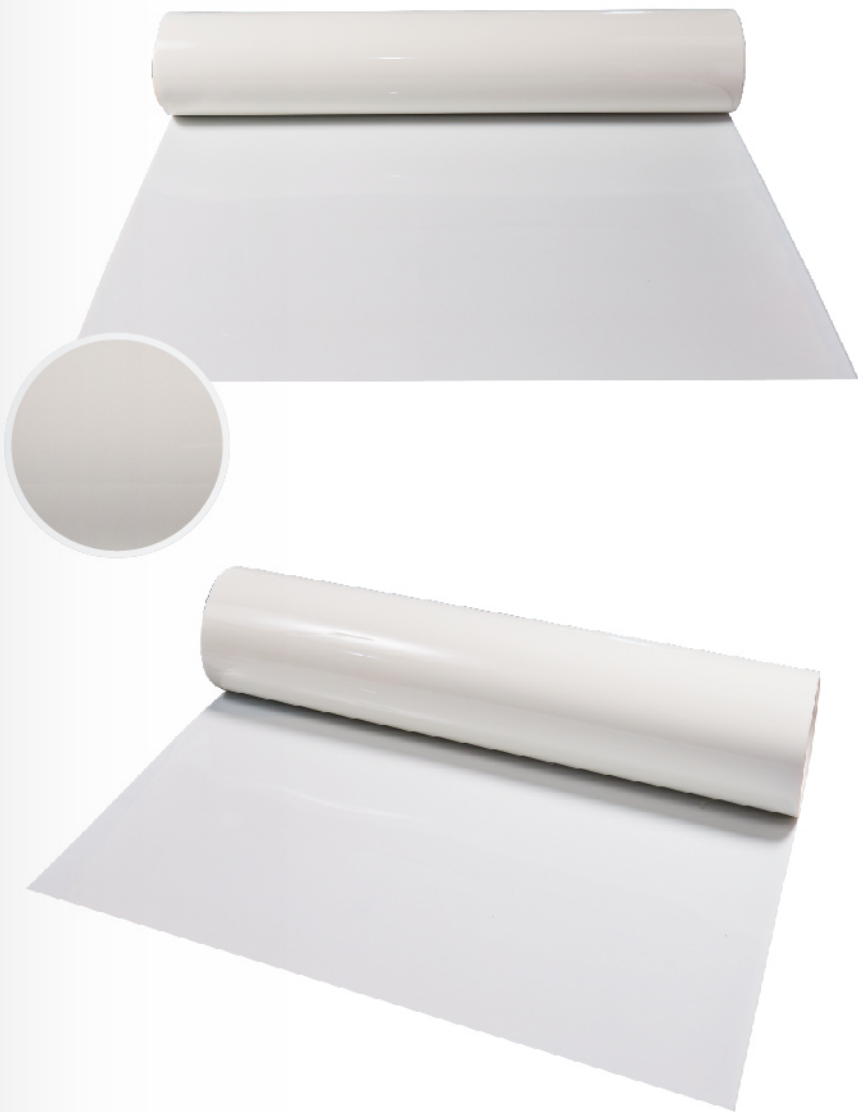


工字撑条

【产品介绍】

玻璃拉挤撑条又名工字条、引拔条、通风条等，是以无碱玻璃纤维浸渍热固性树脂通过拉挤工艺生产的一种型材，它具有机械强度高、电气性能优良、阻燃、耐腐蚀、耐电弧等优点。主要用于干式变压器层间通风冷却及电抗器、阻波器上使用。

Glass pultrusion brace, also known as I-shaped bar, pull-out bar, ventilation bar, etc., is a type of profile produced by the pultrusion process using alkali free glass fiber impregnated thermosetting resin. It has the advantages of high mechanical strength, excellent electrical performance, flame resistance, corrosion resistance, and arc resistance. It is mainly used for inter-layer ventilation and cooling of dry-type transformers, as well as for reactors and wave traps.



技术参数			
项目	单位	0.5PET薄膜	1.1PET薄膜
厚度	mm	0.5	1.1
厚度公差	%	±10	±10
定量	g/m²	710	1500
定量公差	%	±12	±12
单层薄膜厚度	mm	0.25	0.35
击穿电压	kV	≥25	≥30
相对介电常数50Hz	-		3.0~3.4
介质损耗因数50Hz	-		≤6.0x10 <sup>-3</sup>
表面电阻率	Ω		≥1.1x10 <sup>15</sup>

复合类绝缘件系列

复合PET围板



复合PET围板

【产品介绍】

复合PET围板是由聚酯薄膜涂以高温粘合剂多层复合而成，具有良好的机械性能、电气性能、收缩率性、吸湿性和可靠耐热性能，主要用于干式变压器高低压线圈之间绝缘，可替代环氧树脂板、酚醛树脂板作绝缘筒和端绝缘使用。

The composite PET enclosure is made of polyester film coated with high-temperature adhesive layers and has good mechanical properties, electrical properties, shrinkage, moisture absorption, and reliable heat resistance. It is mainly used for insulation between high and low voltage coils of dry-type transformers, and can replace epoxy resin plates and phenolic resin plates as insulation cylinders and end insulation.





复合类绝缘件系列

SHS/LHL



SHS/LHL

【产品介绍】

SHS预浸料由聚酰亚胺薄膜涂上H级胶粘剂与聚酯纤维非织布复合而成的柔软复合材料再浸渍环氧预浸料半固化树脂后成为可靠的热粘接性材料。具有优异的介电性能、粘结性能和耐热性能，是H级干式变压器理想的层间绝缘材料和对地绝缘材料。耐热等级为H级(180℃)。适用于H级干式变压器线圈层间绝缘、端封绝缘和对地绝缘，电机匝间绝缘等。

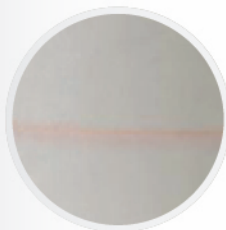
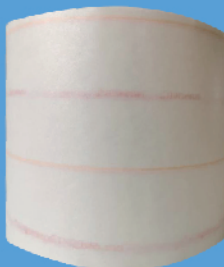
SHS prepreg is a soft composite made of polyimide film coated with H-grade adhesive and polyester fiber nonwoven fabric, and then impregnated with epoxy prepreg semi cured resin to become a reliable thermal adhesive material. With excellent dielectric properties, adhesive properties, and heat resistance, it is an ideal interlayer insulation material and ground insulation material for Class H dry type transformers. The heat resistance rating is Grade H (180 °C). Suitable for coil interlayer insulation, end seal insulation, ground insulation, and motor interturn insulation of Class H dry-type transformers.



技术参数				
指标名称	单位	指标值		
产品代号		G245		
标称厚度	mm	0.18	0.2	0.25
厚度及允许偏差	mm	±0.02	±0.02	±0.03
定量	g/m2	170±20	200±20	230±30
拉伸强度	纵向	≥70	≥80	≥80
	横向	≥30	≥40	≥50
击穿电压	纵向	≥6.0	≥7.0	≥7.0
	横向	≥6.0	≥7.0	≥7.0
伸长率	纵向	≥15		
	横向	≥15		
树脂含量	g/m2	70±20	70±20	60±20
可溶性树脂含量	g/m2	≥32		
挥发物含量	%	≤1.0		
常态粘性		不分层		
热态粘性		不分层、不起泡、不流胶。		
(180±2℃/10min)				
长期粘性	℃	≥180		
外观质量		柔韧性好，表面光洁、平整，不允许有脱层、杂质和机械损伤、皱折，开卷时不应有粘结现象。		
供应尺寸		成卷供应，纸管芯内径为76mm，可分切成带料。		

复合类绝缘件系列

NMN6640



◆NMN6640

NMN-H是由6020/6021透明或乳白聚酯薄膜在其两面复合杜邦而组成，使用的粘合剂不含酸，耐高温。NMN-H具有良好的机械性能(抗拉强度和边缘撕裂性能)及电气性能，其表面平滑，当生产低压电机使用自动下线机时可确保无故障，温度等级H级(180℃)。

NMN-H应用于低压电机、电动工具、电器中作槽绝缘、衬垫绝缘、匝间绝缘和槽楔绝缘及变压器的层间绝缘。

NMN-H在(20C，50% r. h.)可无限期储存

NMN6640

【产品介绍】

NMN-H is composed of 6020/6021 transparent or milky white polyester film compounded with DuPont on both sides. The adhesive used is acid free and resistant to high temperatures. NMN-H has good mechanical properties (tensile strength and edge tear resistance) and electrical properties, with a smooth surface. It can ensure trouble-free production when using automatic off-line machines for low-voltage motors. The temperature class is H (180 ° C). NMN-H is used for slot insulation, pad insulation, inter turn insulation, slot wedge insulation, and interlayer insulation of transformers in low-voltage motors, power tools, and electrical appliances. NMN-H can be stored indefinitely at (20C, 50% r.h.).

技术参数							
材料厚度	mm	0.11	0.12	0.14	0.17	0.19	0.21
厚度偏差	mm	±0.02	±0.02	±0.02	±0.02	±0.02	±0.03
定量及偏差	g/m <sup>2</sup>	119±11	134±13	153±15	188±19	223±22	258±26
	mm						
薄膜厚度	mm	0.025	0.036	0.05	0.075	0.1	0.125
NOMEX®厚度	-	0.04					
拉伸强度	纵向N/10mm	≥100	≥150	≥160	≥170	≥190	≥220
	横向N/10mm	≥80	≥90	≥90	≥105	≥120	≥150
伸长率	纵向 %	≥15					
	横向	≥20					
击穿电压不弯折	KV	≥5	≥6	≥7	≥10	≥11	≥13
常态粘性	-	不分层					
热态粘性	200±2℃60min	不分层，不起泡，不流胶					
耐热等级	-	H级180℃					
颜色	-	双面带杜邦"DUPONT NOMEX"标识，橙色线条					





◆ NHN6650

6650 NHN-N是由金黄色聚酰亚胺薄膜在其两面复合杜邦nomex 464而组成，使用的粘合剂不含酸，耐高温。

6650 NHN-N具有良好的机械性能（抗拉强度和边缘撕裂性能）及电气性能，其表面平滑，当生产低压电机使用自动下线机时可确保无故障，温度等级N级（200℃）

6650 NHN-N应用于低压电机、电动工具、电器中作槽绝缘、衬垫绝缘、匝间绝缘和槽楔绝缘及变压器的层间绝缘。

6650 NHN-N在（20℃，50%r.h.）可无限期储存。

技术参数							
材料厚度	mm	0.11	0.12	0.14	0.17	0.19	0.21
厚度偏差	mm	±0.02	±0.02	±0.02	±0.02	±0.02	±0.03
定量及偏差	g/m <sup>2</sup>	109±11	124±13	143±15	178±19	213±22	248±26
	mm						
薄膜厚度	mm	0.025	0.036	0.05	0.075	0.1	0.125
NOMEX®厚度	-	0.04					
拉伸强度	纵向N/10mm	≥100	≥150	≥160	≥170	≥190	≥220
	横向N/10mm	≥80	≥90	≥90	≥105	≥120	≥150
伸长率	纵向 %	≥15					
	横向	≥20					
击穿电压不弯折	KV	≥5	≥6	≥7	≥10	≥11	≥13
常态粘结性	-	不分层					
热态粘结性	200±2℃60min	不分层，不起泡，不流胶					
耐热等级	-	N级200℃					
颜色	-	双面带杜邦®DUPONT NOMEX®标识，橙色线条					

## 复合类绝缘件系列

NHN6650

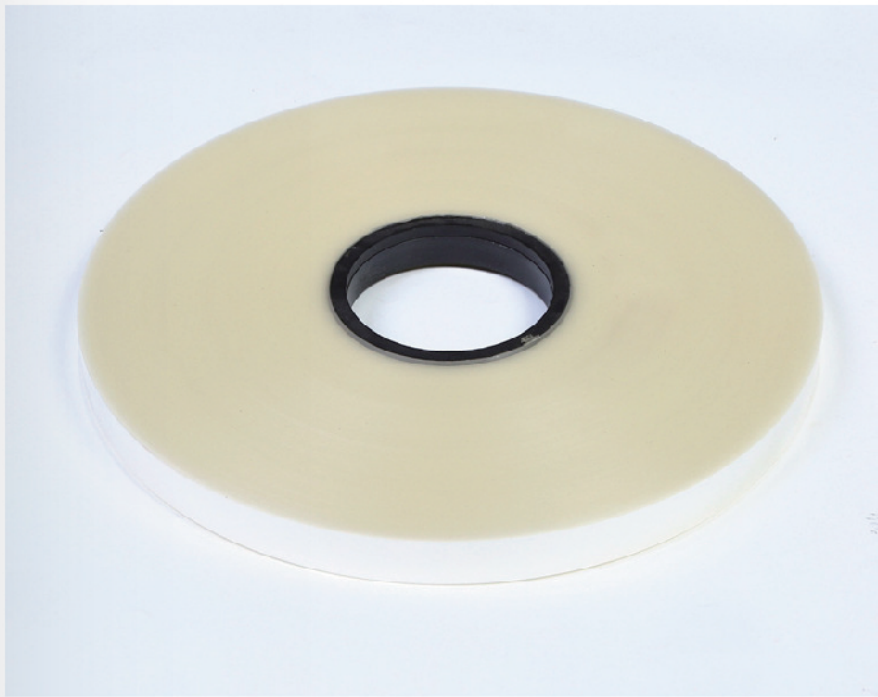
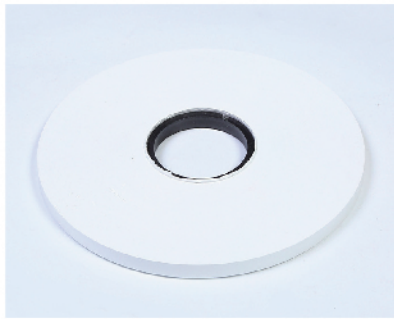


### NHN6650

#### 【产品介绍】

6650 NHN-N is composed of golden polyimide film compounded with DuPont nomex 464 on both sides. The adhesive used does not contain acid and is resistant to high temperature.

6650 NHN-N has good mechanical properties (tensile strength and edge tear resistance) and electrical properties, with a smooth surface. It can ensure trouble-free production when using automatic off-line machines for low-voltage motors. The temperature level is N (200℃) 6650NHN-N shall be used for slot insulation, pad insulation, interturn insulation, slot wedge insulation, and interlayer insulation of transformers in low-voltage motors, power tools, and electrical appliances. 6650 NHN-N can be stored indefinitely at (20℃, 50% r.h.).



## 加工件系列

电磁线包绕分切带



### 电磁线包绕分切带

#### 【产品介绍】

电磁线包绕分切带根据材质不同分为：无纺布分切带、PET聚酯薄膜分切带和电缆纸分切带。可按用户要求，加工成各种规格的电磁线绝缘层用分切带。

The electromagnetic wire wrapping and cutting tape is divided into non-woven fabric cutting tape, PET polyester film cutting tape, and cable paper cutting tape according to different materials. According to user requirements, it can be processed into various specifications of electromagnetic wire insulation layer using slitting tape.



## 加工件系列

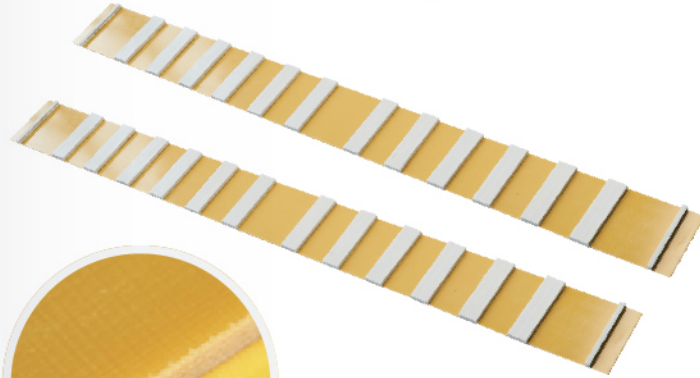
油道撑条帘

### 油道撑条帘

【产品介绍】

油道撑条帘是由矩形撑条与菱格上胶绝缘纸（或电气绝缘纸/电工纸板）使用特种胶黏剂粘贴而成。应用于油浸式变压器，避免传统使用瓦楞纸板易变形、受热后强度下降等弱点，使其与线圈结合牢固，并具有更优良的机械强度和电气性能。可根据用户的来图尺寸加工成各种规格。

Glass pultrusion brace, also known as I-shaped bar, pull-out bar, ventilation bar, etc., is a type of profile produced by the pultrusion process using alkali free glass fiber impregnated thermosetting resin. It has the advantages of high mechanical strength, excellent electrical performance, flame resistance, corrosion resistance, and arc resistance. It is mainly used for interlayer ventilation and cooling of dry-type transformers, as well as for reactors and wave traps.



## 复合类绝缘件系列

环氧板



### 环氧板

【产品介绍】

环氧树脂板是由电工用无碱玻璃布浸以环氧酚醛树脂经热压而成的层压制品，具有高的机械和介电性能，适用于电机、电器设备中作绝缘结构零部件，并可在潮湿环境条件和变压器油中使用。

Epoxy resin board is a laminated product made by hot-pressing an alkali free glass cloth soaked in epoxy phenolic resin for electrical purposes. It has high mechanical and dielectric properties, and is suitable for use as insulating structural components in electric motors and electrical equipment. It can also be used in humid environmental conditions and transformer oil.



公司可图纸尺寸加工各种的绝缘纸筒及角环



## 加工件系列

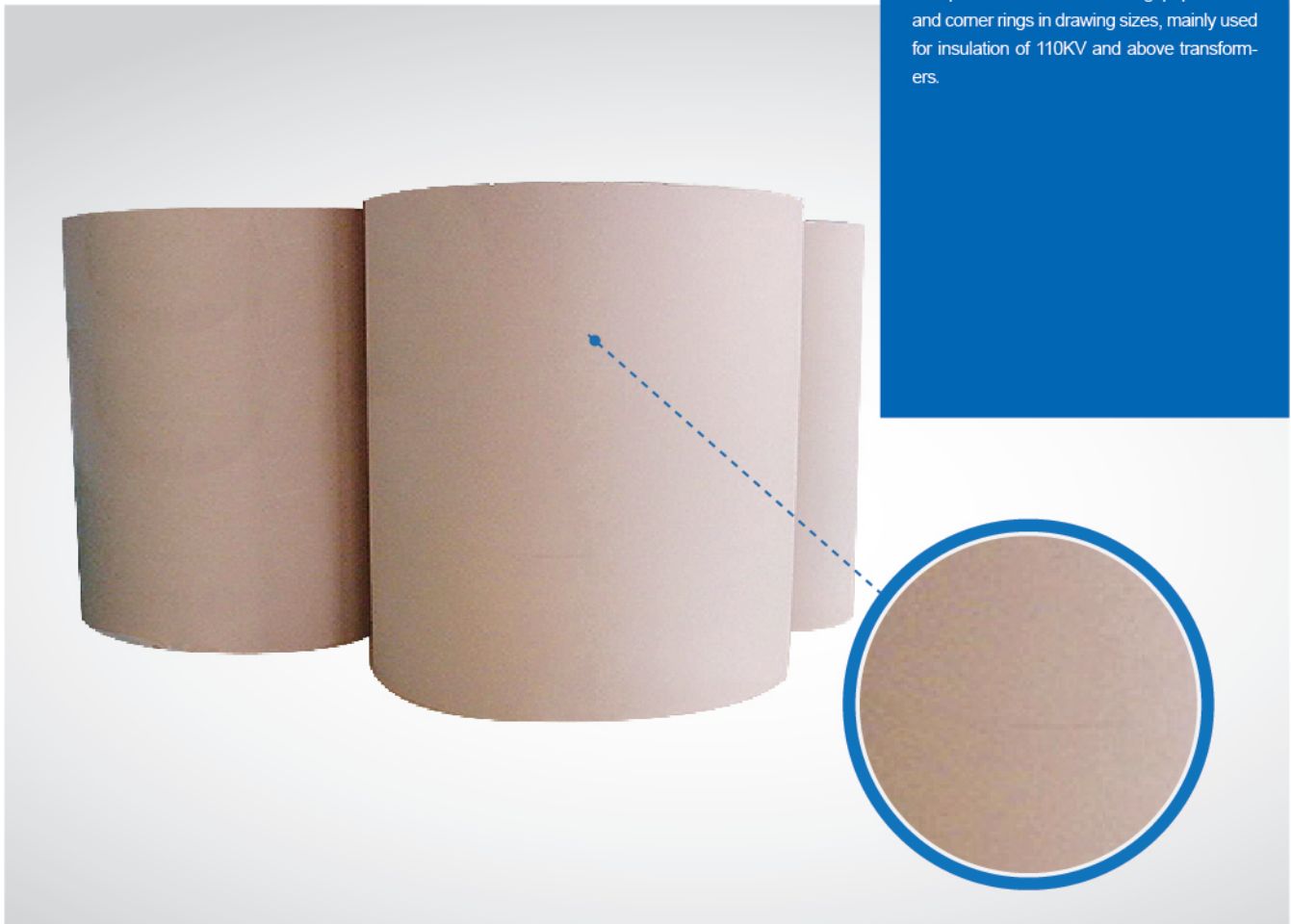
绝缘纸筒

### 绝缘纸筒

#### 【产品介绍】

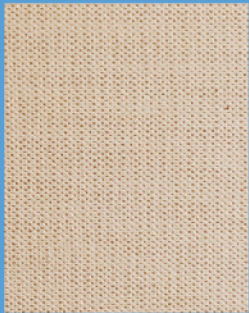
绝缘纸筒是变压器绕组的支撑骨架，起到分隔线圈间油道的作用；作为绕组主绝缘的一部分，其具有足够的机械强度和耐压强度。公司可根据图纸尺寸加工各种的绝缘纸筒及角环，主要用于110KV及以上变压器的绝缘。

The insulating paper cylinder is the supporting skeleton of the transformer winding, which serves to separate the oil passages between the coils; As a part of the main insulation of the winding, it has sufficient mechanical strength and withstand voltage strength. The company can process various insulating paper tubes and corner rings in drawing sizes, mainly used for insulation of 110KV and above transformers.



## 加工件系列

电工绝缘纸板

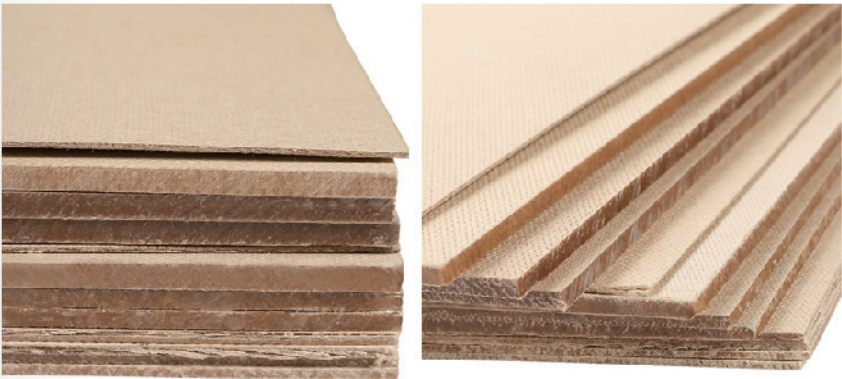


### 电工绝缘纸板

#### 【产品介绍】

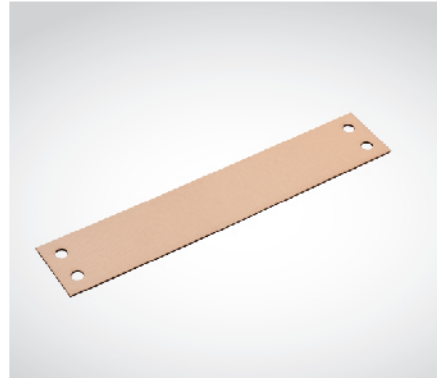
电工绝缘纸板具有良好的机械强度，较高的耐电强度，较大的紧度，较小的收缩性，很好的平整性。电工纸板广泛用于变压器、电容等。

Electrical insulating cardboard has good mechanical strength, high electrical resistance, large tightness, small shrinkage, and good flatness. Electrical cardboard is widely used in transformers, capacitors, etc.





根据用户要求，按来图尺寸加工成各种规格的成型件



## 加工件系列

层压木加工件

### 层压木加工件

【产品介绍】

电工用的层压木，多采用东北优质桦木，浸渍绝缘树脂热层压而成的。具有比重适中、机械强度高、便于真空干燥、与变压器油相容性好、易于机械加工的优点，其介电常数与变压器油接近，绝缘配合合理，可以在105℃的变压器油中长期使用。广泛用来制造油浸式变压器的上下压板、引线支架、铁轭垫块等零件，在互感器中用来制作夹件，代替了钢板、绝缘纸板、环氧纸板、环氧玻璃布板在这些方面的应用，从而减低了变压器的自重和材料费用。

Laminated wood for electrical purposes is mostly made of high-quality birch wood from Northeast China, impregnated with insulating resin and thermally laminated. It has the advantages of moderate specific gravity, high mechanical strength, easy vacuum drying, good compatibility with transformer oil, and easy mechanical processing. Its dielectric constant is close to that of transformer oil, and its insulation coordination is reasonable. It can be used in transformer oil at 105℃ for a long time. Widely used in the manufacture of upper and lower pressure plates, lead brackets, iron yoke pads, and other parts of oil immersed transformers, they are used in the production of clamps in transformers, replacing the application of steel plates, insulating cardboard, epoxy cardboard, and epoxy glass cloth plates in these areas, thereby reducing the dead weight and material costs of transformers.



根据用户要求，按来图尺寸加工成各种规格的成型件



## 加工件系列

220KVA以下绝缘成型件

### 220KVA以下绝缘成型件

【产品介绍】

绝缘成型件是通过机械加工、模压、湿法成型等方法生产的端圈、压环、整体绝缘筒、撑条、角环、引线角环片、整体角环等系列产品。能够准确地保证在变压器中保持电场分布一致，特别是在高电场强度分布的区域，具有绝缘件尺寸的稳定，电气强度高的特点，从而保证变压器运行的可靠性和稳定性。

Insulating molded parts are a series of products produced by mechanical processing, molding, wet molding, and other methods, such as end rings, compression rings, integral insulation cylinders, braces, corner rings, lead corner rings, and integral corner rings. They can accurately ensure that the electric field distribution in the transformer is consistent, especially in areas with high electric field intensity distribution, and have the characteristics of stable insulation size and high electrical strength, thereby ensuring the reliability and stability of transformer operation.





# PARTNER

## 合作客户



# LOOKING FUTURE

## 企业愿景

长期以来，南通百特始终不渝地坚持“质量第一、管理规范、勇于开拓”的经营方针，秉承“益国利民、和谐共存、服务社会”的经营理念，对外重视本土文化经营，营造天时地利人和的发展氛围，与电力行业及广大客户保持合作双赢、互利互惠的良好关系；对内积极倡导“以人为本”的管理理念，充分尊重员工的首创精神，坚持务实经营，提高企业员工的凝聚力。在保持企业稳健经营的前提下，树立了良好的企业形象。

For a long time, Nantong Baite has always adhered to the business policy of "quality first, standardized management, and the courage to explore", adhering to the business philosophy of benefiting the country and the people, harmonious coexistence, and serving society. It attaches great importance to local cultural management externally, creates a favorable development atmosphere for the time, place, and people, and maintains a win-win and mutually beneficial relationship with the power industry and its customers; Actively advocating the "people-oriented management concept" internally, fully respecting the pioneering spirit of employees, adhering to pragmatic management, and improving the cohesion of enterprise employees. While maintaining the stable operation of the enterprise, it has established a good corporate image.

## 服务理念 Service philosophy

客户需求，就是我们存在的价值。  
The needs of customers, we have more value.