

# Installation Manual

Compatible Model	CToyota CAvalon
Year	2019-2022



8-ETTY-5107-00-00

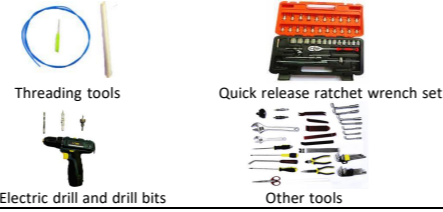
## 1. Points to note

- For safety and to ensure the proper use of product, please ask a professional technician to install. Do not disassemble and install it privately in case of damaging product and installation accidents.
- Please arrange each wiring harness according to the wiring method in this manual, be sure to tie each wiring harness to the vehicle's original wiring harness with cable ties. Make sure the wiring harnesses are not located at the buckles or screw holes to avoid the wiring harnesses crushed by the vehicle interior trim panel buckles and screws during the installation process.
- Because some of the wiring harness terminals (as shown in the red ellipses below) are not inserted into the wiring harness connectors during manufacture, please insert terminals into the wiring harness connector first to avoid short circuit between terminals after the wiring harnesses have been arranged, then connect other plugs of the wiring harnesses (as shown in the blue ellipses below) with the original plugs.



- Check the function display of instrument panel before installation, whether the button of the vehicle is working properly, whether the doors and windows work properly while opening and closing, whether there are scratches on the vehicle internal and external surfaces; and report to the customers in a timely manner if there are any problems.
- During the process of disassembly and assembly, do not carry metal ornaments and other hard objects with you to prevent damage to the paintwork, seats and interior. Be sure to place the removed trim components properly to avoid scratching them.
- All the pictures in this manual are for reference only, vehicle models with different configurations may have different pictures, but the installation methods are the same.

## 2. Installation tools



## 3. Product list

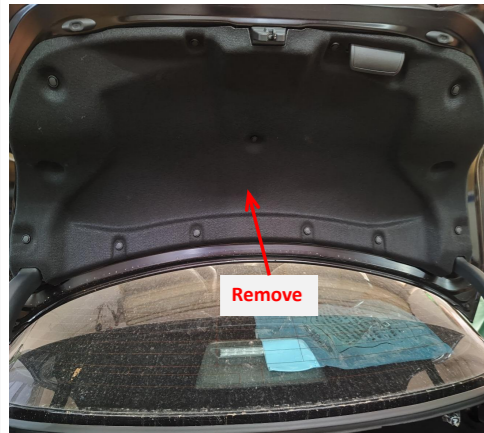
No.	Name	QTY	Picture
①	Strut	2	
②	ECU	1 set	
③	Wiring harness	1 set	
④	Power latch	1	
⑤	Added tailgate switch	1	
⑥	Other parts (screws, brackets, etc.)	1 set	Omitted



1. Remove the front left side trim panel and door sill panel.



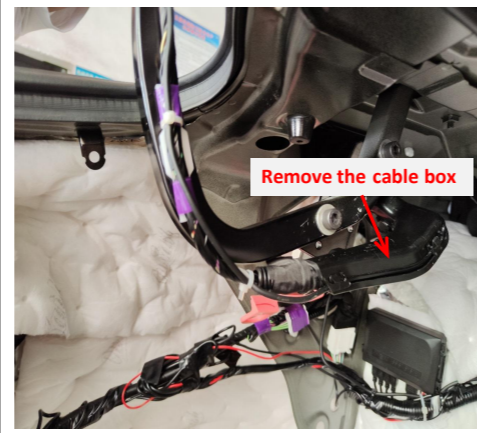
2. Remove the rear left side B-pillar trim panel and door sill panel.



3. Remove the tailgate trim panel.



4. Take out the trunk floor mat and remove the trim panel on both sides of the trunk.



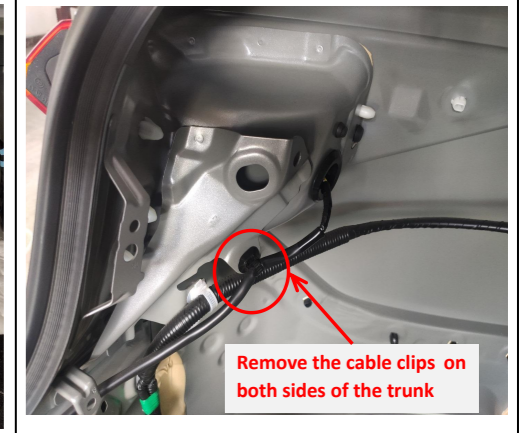
5. Remove the cable box from the left hinge and take out the wiring harness.



6. Fold the rear seats.



7. Remove the springs and gaskets from both sides of the trunk.



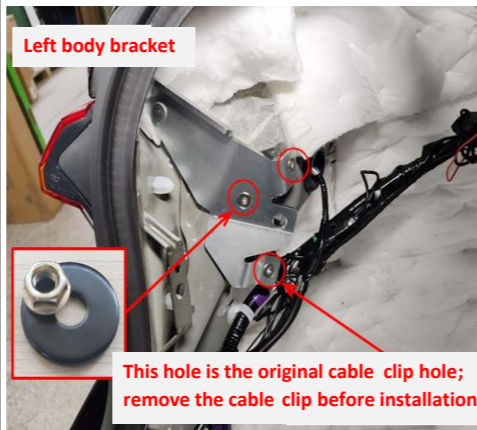
8. Remove the indicated cable clip on both sides of the trunk.



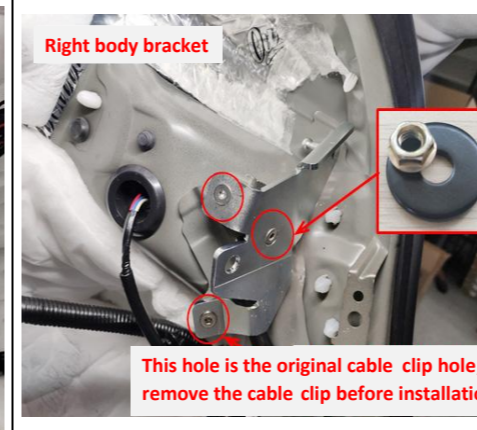
9. Remove the bracket used for hanging spring from the left hinge.



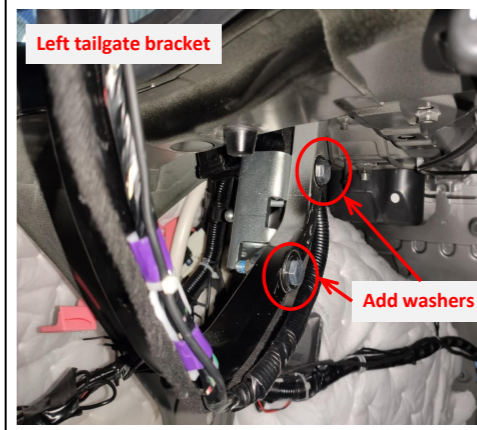
10. Remove the bracket used for hanging spring from the right hinge.



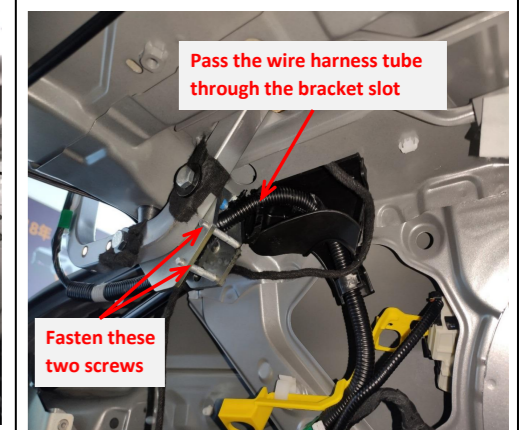
11. Install the left body bracket.



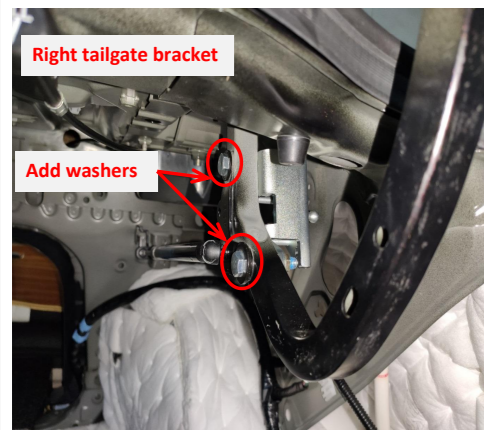
12. Install the right body bracket.



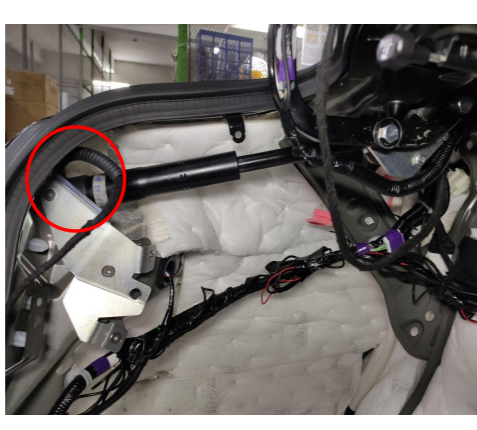
13. Install the bracket on the left hinge.



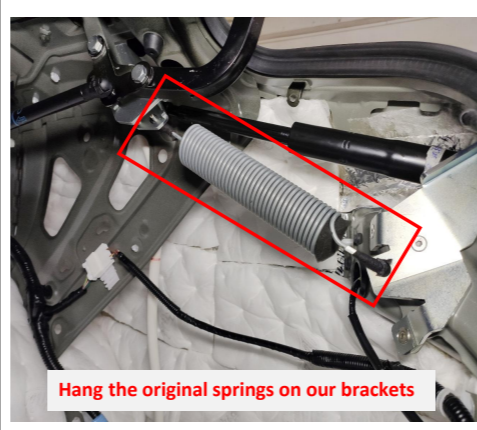
14. Pass the wiring harness tube through the bracket slot and fasten the two screws tightly.



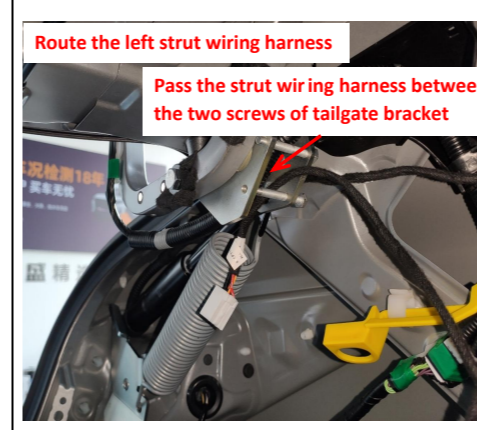
15. Install the bracket on the right hinge (the gas strut and strut bracket should be installed back).



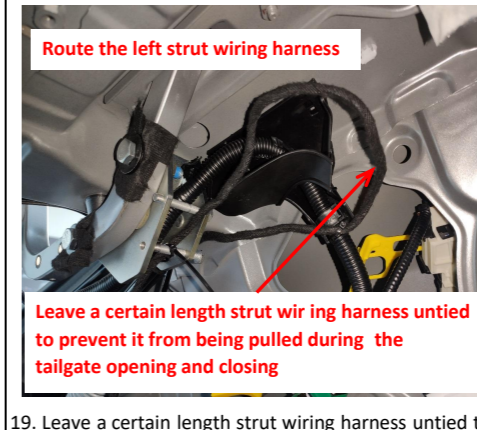
16. Install the electric struts, L on the left and R on the right (the first letter of the strut code), making sure the ends with wiring harnesses are on the car body.



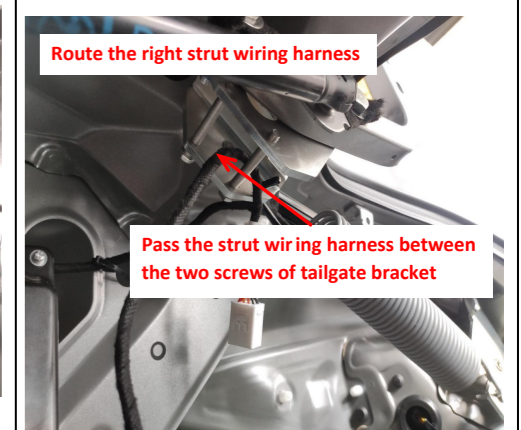
17. Hang the original springs at our brackets (wrap the two ends of the springs with cloth tape).



18. Pass the plug of strut wiring harness between the two screws of tailgate bracket.



19. Leave a certain length strut wiring harness untied to prevent it from being pulled during the tailgate opening and closing, then route the wiring harness along the left hinge to the tailgate.



20. Pass the plug of strut wiring harness between the two screws of tailgate bracket.

 <p>Arrange the right strut wiring harness</p> <p>Leave a certain length strut wiring harness untied to prevent it from being pulled during the tailgate opening and closing</p> <p>21. Leave a certain length strut wiring harness untied to prevent it from being pulled during the tailgate opening and closing, then route the wiring harness along the right hinge to the tailgate.</p>	 <p>22. Remove the original latch and the latch cable.</p>	 <p>23. Install the original emergency cable on the power latch (there are two fasteners, choose the inner side one).</p>	 <p>24. Install the power latch and manually adjust the latch to the locked state.</p>	 <p>25. Connect the lock signal harness to the plugs of the power latch.</p>	 <p>26. Connect the lock signal harness to the plugs of original tailgate switch.</p>
 <p>27. Install the added tailgate switch with the original screws.</p>	 <p>28. Wrap the two emergency wires of the latch together with the electric tape and hide them under the rear left trim panel.</p>	 <p>29. Route the power harness (routing only, no power or plug connection).</p>	 <p>30. Pass the power harness through the indicated cable box.</p>	 <p>31. Pass the plug of power harness through the left tailgate bracket slot and route it along the left hinge to the tailgate.</p>	 <p>32. Ground at the left side of the trunk.</p>
<p>33. Check all the plugs.</p> <p>Check if all plugs are properly connected; Unlock the lock with the emergency key to check whether the tailgate lock can be unlocked normally and whether the emergency cable is well installed.</p>	 <p>34. The fuse box is located at left side of pedals and the fuse slot for power supply is indicated above.</p>	 <p>35. Plug the fuse tap into the fuse box and pay attention to the direction.</p>	 <p>36. Insert the strut wiring harnesses ①②, lock signal harness ③, and power harness ④ into the ECU in sequence.</p>	 <p>37. Place the ECU bracket at the indicated position.</p>	 <p>38. Secure the ECU with a nut.</p>
<p>39. Confirm that the power latch and the electric struts are working properly.</p> <p>1. Adjust the lock latch to the locked state manually; 2. Manually close the tailgate to the position where the latch touches the lock striker; 3. Press the original tailgate switch to open the tailgate and check whether the tailgate can be opened normally and the tailgate lock can be unlocked normally; 4. Confirm that the lock actuator and the electric struts are working properly before continuing to install.</p>	 <p>40. Test each function of the electric tailgate.</p>	 <p>41. Install all the trim panels back.</p>	<p>5. System initialization method</p> <ol style="list-style-type: none"> <li>1. Press the added tailgate switch button, and the tailgate will close automatically;</li> <li>2. Press the tailgate switch button outside the tailgate to open the tailgate and it will make a long sound of "beep".</li> <li>3. The system initialization is complete.</li> </ol> <p>6. Instructions for the electric tailgate</p> <p>1. Methods to open and close the tailgate:</p> <ul style="list-style-type: none"> <li>• Press and hold the tailgate button on the remote key;</li> <li>• Press and hold the tailgate button at the driver's area;</li> <li>• Press the original tailgate switch button;</li> <li>• Press the added tailgate switch button to close;</li> </ul>	<p>2. Method to pause the tailgate:</p> <p>During the operation of the tailgate, press the button with any of the above methods and the tailgate will be paused. Press again, and the tailgate will move in reverse.</p> <p>3. Method to memorize the height:</p> <p>Open the tailgate to the height you want to set, long press the added tailgate switch button, and release the switch after hearing a long of "beep ----". The height memory is complete.</p> <p>Tip: During the operation of the tailgate, pause the tailgate, and then push the tailgate to the ideal height with your hand.</p> <p>4. Meanings of the buzzer sound:</p> <p>"Beep" once: Receiving an open/close or pause signal, the tailgate will immediately open/close or pause;</p> <p>"Beep" twice: The tailgate has been opened or closed in place;</p> <p>"Beep" three times: The resistance during opening or closing the tailgate is too large and the intelligent anti-pinch has been turned on;</p> <p>Long sound of "beep": The height memory is complete.</p>	