

# Installation Manual

Compatible Model	BYD Yuan UP
Year	2024



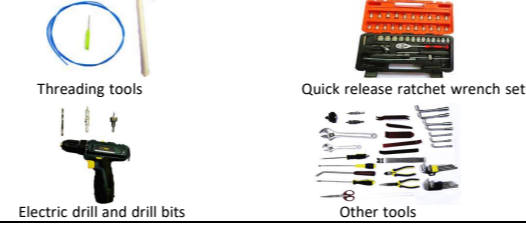
## 1. Points to note

- For safety and to ensure the proper use of product, please ask a professional technician to install. Do not disassemble and install it privately in case of damaging product and installation accidents.
- Please arrange each wiring harness according to the wiring method in this manual, be sure to tie each wiring harness to the vehicle's original wiring harness with cable ties. Make sure the wiring harnesses are not located at the fasteners or screw holes to avoid the wiring harnesses crushed by the vehicle interior trim panel buckles and screws during the installation process.
- Because some of the wiring harness terminals (as shown in the red ellipses below) are not inserted into the wiring harness connectors during manufacture, please insert terminals into the wiring harness connector first to avoid short circuit between terminals after the wiring harnesses have been arranged, then connect other plugs of the wiring harnesses (as shown in the blue ellipses below) with the original plugs.



- Check the function display of instrument panel before installation, whether the button of the vehicle is working properly, whether the doors and windows work properly while opening and closing, whether there are scratches on the internal and external surfaces of the vehicle; and report to the customers in a timely manner if there are any problems.
- During the process of disassembly and assembly, do not carry metal ornaments and other hard objects with you to prevent damage to the paintwork, seats and interior. Be sure to place the removed trim components properly to avoid scratching them.
- All the pictures in this manual are for reference only, vehicle models with different configurations may have different pictures, but the installation methods are the same.

## 2. Installation tools



## 3. Product list

No.	Name	QTY	Picture
①	Strut	2	
②	ECU	1 set	
③	Wiring harness	1 set	
④	Power latch	1	
⑤	Added tailgate switch	1	
⑥	Other parts (screws, brackets, etc.)	1 set	Omitted



1. Remove the front left door sill panel and the trim panels of the fuse box.



2. Remove the rear left door sill panel and the B-pillar trim panel.



3. Remove the trim panels on the left side of the trunk.



4. Remove the trim panels on the tailgate.



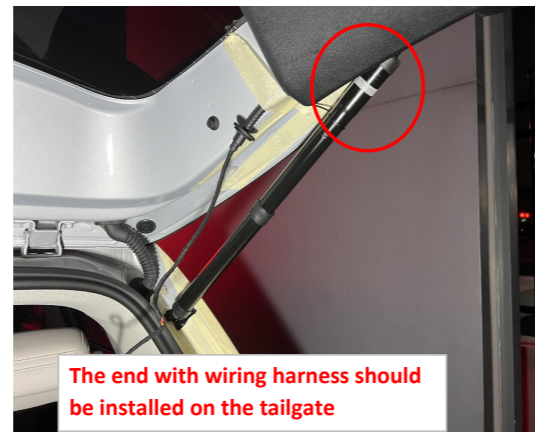
5. Remove the original gas struts.



6. Replace the ball studs on both sides.



7. Replace the left and right tailgate brackets.



8. Install the electric struts, L on the left and R on the right (the first letter of the strut code).



9. Drill a hole at the indicated position on both sides with a  $\phi$  21mm drill bit to allow strut wiring harness to pass through.



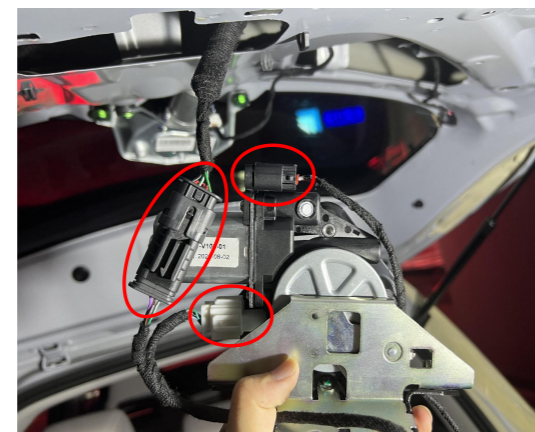
10. Thread the left and right strut wiring harnesses to the indicated position.



11. Remove the plastic casing of the latch and remove the latch.



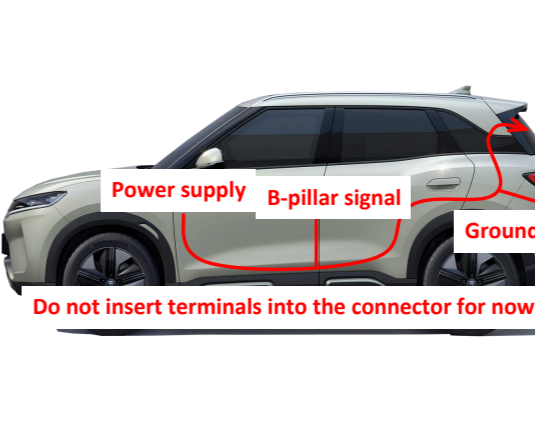
12. Connect the plugs of the lock signal harness to the original tailgate switch.



13. Connect the plugs of the lock signal harness to the power latch.



14. Install the power latch with the provided screws.

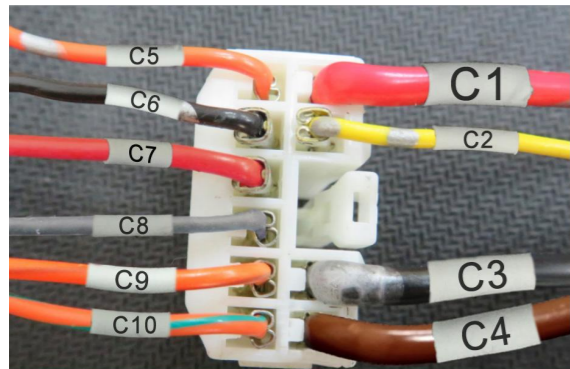


15. Route the power harness to the left side of the trunk.



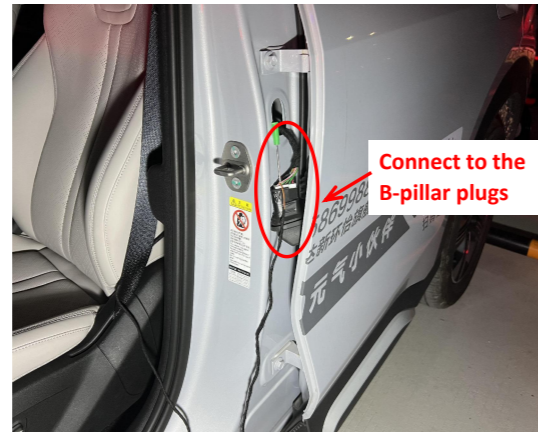
16. Ground at the indicated position on the left side of the trunk.





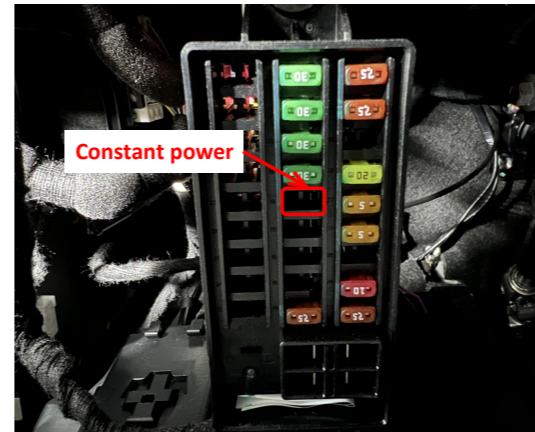
Note: For models with fewer than 10 wires, just insert them according to the corresponding label or color.

17. Insert the power harness terminals into the wire harness connector.



Connect to the B-pillar plugs

18. Connect the plugs of the power harness to the B-pillar plugs at the rear left B-pillar.



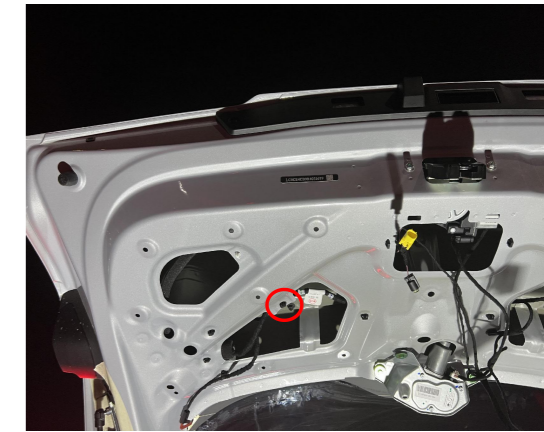
Constant power

19. The fuser slot for power supply is indicated above.

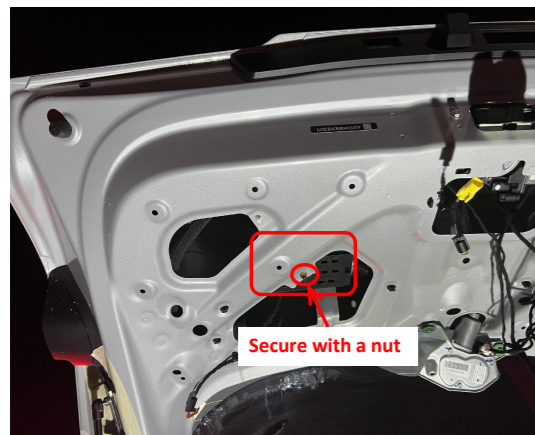


Wire points to the left

20. Plug the fuse tap into the fuse box and pay attention to the direction of wire.



21. Remove the indicated cable clip.



Secure with a nut

22. Install the ECU and secure it with a nut



23. Insert the left and right strut wiring harnesses ① ②, lock signal harness ③, and power harness ④ into the ECU in sequence.



24. Press the added tailgate switch button to close the tailgate once to complete initialization and then test each function of the electric tailgate.



25. If the tailgate doesn't close properly, you can adjust the position of the lock striker.



Open a Ø21mm hole here

26. Remove the tailgate handle and open a Ø21mm hole with the provided hole opener for installing the added tailgate switch.



27. Install the added tailgate switch and reinstall all the trim panels.

**5. System initialization method**

1. Press the added tailgate switch button to make the tailgate close automatically;
2. Press the switch button outside the tailgate to open the tailgate and it will make a long sound of "beep".
3. The system initialization is complete.

**6. Instructions for the electric tailgate**

1. Methods to open and close the tailgate:
  - Press the tailgate button on the remote key 2 times;
  - Press the unlock button at the driver's area 3 times;
  - Press the original tailgate switch button;
  - Press the added tailgate switch button.

**2. Method to pause the tailgate:**

During the operation of the tailgate, press the button with any of the above methods, and the tailgate will be paused. Press again, and the tailgate will move in reverse.

**3. Instructions for the added tailgate switch**

**① Closing speed acceleration (5 Settings)**

1. Press and hold the switch button until hearing the first short beep sound.
2. After releasing the button, you will hear a short beep, indicating that the closing speed acceleration has taken effect.
3. Repeat this step once to increase by one setting.

**② Opening speed acceleration (5 Settings)**

1. Press and hold the switch button until hearing the second short beep sound
2. After releasing the button, you will hear two short beeps, indicating that the opening speed acceleration has taken effect.
3. Repeat this step once to increase by one setting.

**③ Settings of the voice module**

1. Press and hold the switch button until hearing the third short beep sound.
2. After releasing the button, you will hear three short beeps, indicating that the voice module has entered configuration mode. (For details, see the voice module operation manual)

**④ Block the voice module**

1. Press and hold the added switch button until hearing the fourth beep sound.
2. After releasing the button, you will hear three four beeps indicating that the voice module has been blocked.

**⑤ Height setting**

1. Press and hold the switch button until hearing the fifth short beep sound.
2. After releasing the button, you will hear a long beep sound indicating that the height setting has taken effect.

**⑥ Switch between quick/slow press of the unlock button on remote key**

1. Press and hold the switch button until hearing the sixth short beep sound.
2. After releasing the button, you will hear a long beep sound and a short beep sound indicating that the switch between quick and slow press of the unlock button has taken effect.

**⑦ Switch between pressing the unlock button twice/three times**

1. Press and hold the switch button until hearing the seventh short beep sound.
2. After releasing the button, you will hear a long beep sound and two short beeps indicating that the switch between pressing the unlock button twice/three times has taken effect.

**⑧ Braking force increase (five settings)**

1. Press and hold the unlock button until hearing the eighth short beep sound.
2. After releasing the button, you will hear a long beep sound and three short beeps indicating that the switch between pressing the unlock button twice/three times has taken effect.
3. Repeat this step to increase by one setting.

**⑨ Restore to factory settings**

1. Press and hold the unlock button until hearing the ninth short beep sound.
2. After releasing the button, you will hear a long beep sound and four short beeps indicating that the restoration to the factory setting has taken effect.

**4. Meanings of the buzzer sound:**

"Beep" once: Receiving an open/close or pause signal, the tailgate will immediately open/close or pause;  
 "Beep" twice: The tailgate has been fully opened or closed;  
 "Beep" three times: The resistance during opening or closing the tailgate is too large, and the intelligent anti-pinch has been turned on.