

Installation Manual

Compatible Model	CAudi CA4L
Year	2021-2024



8-ETVW-5101-00-00

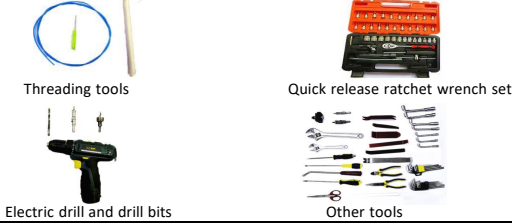
1. Points to note

- For safety and to ensure the proper use of product, please ask a professional technician to install. Do not disassemble and install it privately in case of damaging product and installation accidents.
- Please arrange each wiring harness according to the wiring method in this manual, be sure to tie each wiring harness to the vehicle's original wiring harness with cable ties. Make sure the wiring harnesses are not located at the fasteners or screw holes to avoid the wiring harnesses crushed by the vehicle interior trim panel buckles and screws during the installation process.
- Because some of the wiring harness terminals (as shown in the red ellipses below) are not inserted into the wiring harness connectors during manufacture, please insert terminals into the wiring harness connector first to avoid short circuit between terminals after the wiring harnesses have been arranged, then connect other plugs of the wiring harnesses (as shown in the blue ellipses below) with the original plugs.



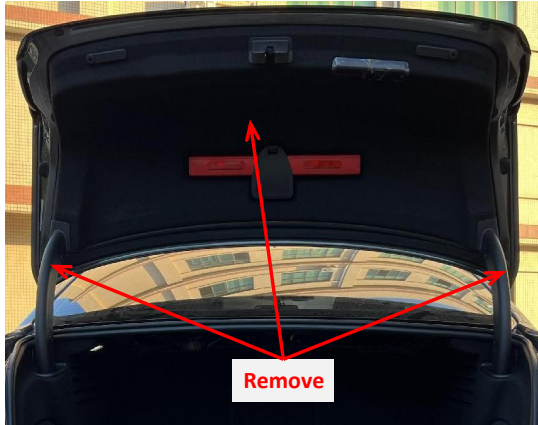
- Check the function display of instrument panel before installation, whether the button of the vehicle is working properly, whether the doors and windows work properly while opening and closing, whether there are scratches on the internal and external surfaces of the vehicle; and report to the customers in a timely manner if there are any problems.
- During the process of disassembly and assembly, do not carry metal ornaments and other hard objects with you to prevent damage to the paintwork, seats and interior. Be sure to place the removed trim components properly to avoid scratching them.
- All the pictures in this manual are for reference only, vehicle models with different configurations may have different pictures, but the installation methods are the same.

2. Installation tools

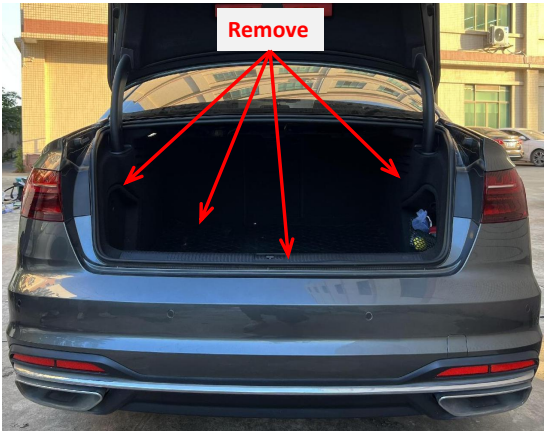


3. Product list

No.	Name	QTY	Picture
①	Strut	2	
②	ECU	1 set	
③	Wiring harness	1 set	
④	Power latch	1	
⑤	Added tailgate switch	1	
⑥	Other parts (screws, brackets, etc.)	1 set	Omitted



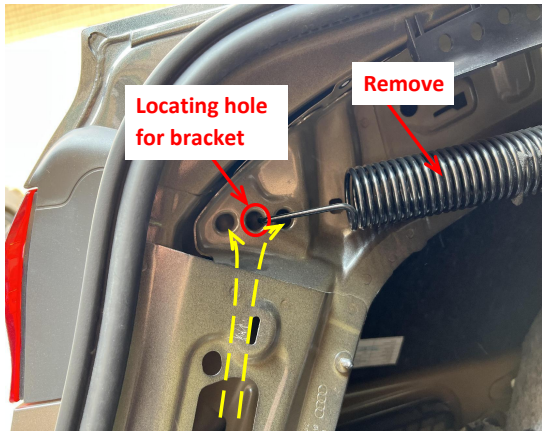
1. Remove the indicated trim panels from the tailgate and hinges.



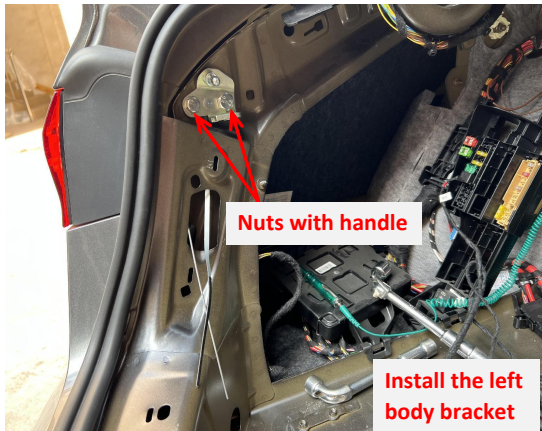
2. Remove the indicated trim panels and floor mat from the trunk.



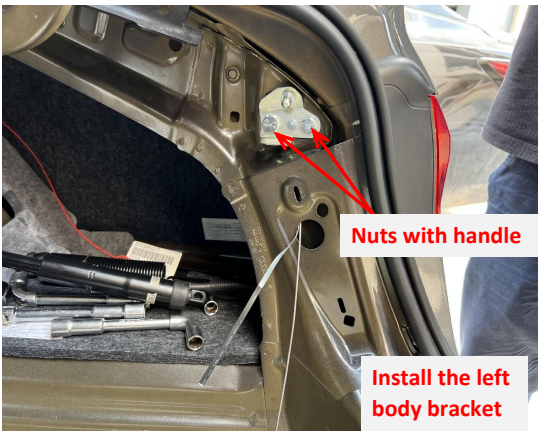
3. Fold the all the rear seats.



4. Remove the original spring and thread two nuts with handle through the two holes indicated by yellow lines.



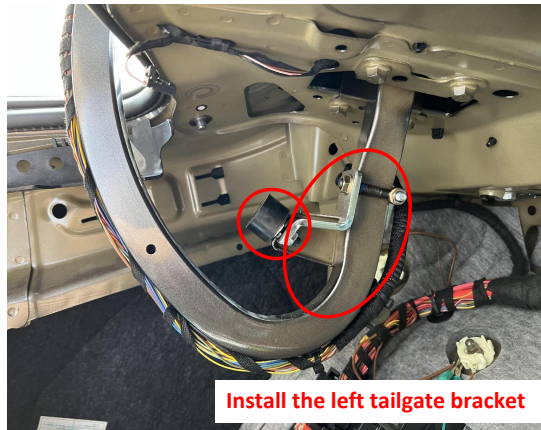
5. Install the left body bracket.



6. Install the right body bracket.



7. Remove the indicated bump stops from the hinges on both sides.



8. Install the left tailgate bracket and provided bump stop. For the right hinge, only replace the bump stop.



9. Remove the damping rod.



10. Install the left strut (L&R are marked as the first letter of the strut code). Pay attention to the location of rubber tube.



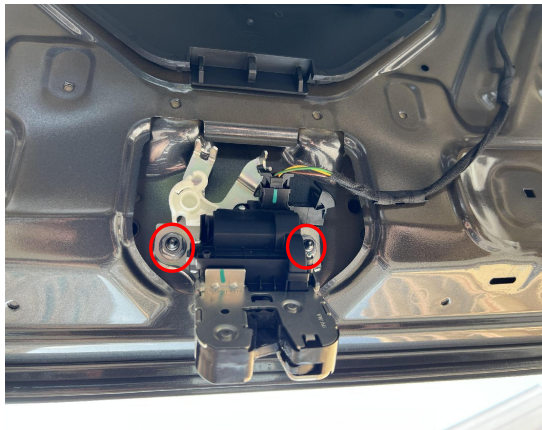
11. Install the right strut (L&R are marked as the first letter of the strut code). Pay attention to the location of rubber tube.



12. Hang the original springs to the middle hole of our brackets



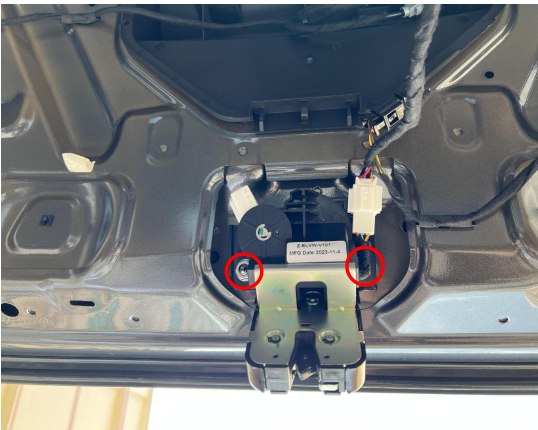
13. Route the strut wiring harnesses to the left side of trunk.



14. Remove the original latch.



15. Connect the lock signal harness to the plugs of the power latch.



16. Install the power latch.

 <p>Remove</p>		 <p>Grounding</p>	 <p>Constant power</p>	 <p>Wire points to the left Cut off part of the edge to allow it to fit in</p>
17. Remove the indicated panel.	18. Connect the lock signal harness to the plugs of the original tailgate switch.	19. Ground at the indicated location on the left side of the trunk.	20. The fuse slot for power supply is indicated above.	21. Plug the fuse tap into the fuse box. Pay attention to the direction.
 <p>Open a hole here</p>	 <p>Place the ECU here Secure with a nut</p>		<p>1. Manually Adjust the latch to the locked state; 2. Manually close the tailgate to the position where the latch touches the striker; 3. Press the original tailgate switch button to open the tailgate and check whether the tailgate can be opened normally and the latch can be unlocked normally; 4. Confirm that the latch and the electric struts function well before continuing to install.</p>	
22. Drill a hole at the indicated location with a φ6mm drill bit.	23. Secure the ECU at the indicated location.	24. Insert the left and right strut wiring harnesses ①②, lock signal harness ③, and power harness ④ into the ECU in sequence.	25. Check whether the power latch and the electric struts function well.	26. Press the added tailgate switch button to open and close the tailgate once for initializing the system, and then test each function of the electric tailgate.
 <p>5mm</p>	 <p>Scrap off</p>	 <p>Fasten this part to the tailgate trim panel</p>	 <p>Parallel</p>	
27. The location for the added tailgate switch is as shown above. Stick the hole template to the indicated location.	28. Scrap off the indicated ribs of the original latch casing.	29. Fasten the latch casing securely to the tailgate trim panel.	30. Scrap the indicated part on the left side of the trunk to prevent interference with the spring.	31. Install the added tailgate switch and reinstall the all the trim panels.
<p>5. System initialization method</p> <p>1. Press the added tailgate switch button to make the tailgate close automatically;</p> <p>2. Press the switch button outside the tailgate to open the tailgate and it will make a long sound of "beep".</p> <p>3. The system initialization is complete.</p> <p>6. Instructions for the electric tailgate</p> <p>1. Methods to open and close the tailgate:</p> <ul style="list-style-type: none">●Press the tailgate button on the remote key 2 times;●Press the tailgate button at the driver's area;●Press the original tailgate switch button;●Press the added tailgate switch button.	<p>3. Instructions for the added tailgate switch</p> <p>①Closing speed acceleration (5 Settings)</p> <p>1.Press and hold the switch button until hearing the first short beep sound.</p> <p>2.After releasing the button, you will hear a short beep, indicating that the closing speed acceleration has taken effect.</p> <p>3.Repeat this step once to increase by one setting.</p> <p>②Opening speed acceleration (5 Settings)</p> <p>1.Press and hold the switch button until hearing the second short beep sound</p> <p>2. After releasing the button, you will hear two short beeps, indicating that the opening speed acceleration has taken effect.</p> <p>3. Repeat this step once to increase by one setting.</p> <p>③Settings of the voice module</p> <p>1.Press and hold the switch button until hearing the third short beep sound.</p> <p>2.After releasing the button, you will hear three short beeps, indicating that the voice module has entered configuration mode. (For details, see the voice module operation manual)</p> <p>④Block the voice module</p> <p>1.Press and hold the switch button until hearing the fourth beep sound.</p> <p>2.After releasing the button, you will hear four short beeps indicating that the voice module has been blocked.</p>	<p>⑤Height setting</p> <p>1.Press and hold the switch button until hearing the fifth short beep sound.</p> <p>2.After releasing the button, you will hear a long beep sound indicating that the height setting has taken effect.</p> <p>⑥Switch between quick/slow press of the unlock button on remote key</p> <p>1.Press and hold the switch button until hearing the sixth short beep sound.</p> <p>2.After releasing the button, you will hear a long beep sound and a short beep sound indicating that the switch between quick and slow press of the unlock button has taken effect.</p> <p>⑦Switch between pressing the unlock button twice/three times</p> <p>1.Press and hold the switch button until hearing the seventh short beep sound.</p> <p>2.After releasing the button, you will hear a long beep sound and two short beeps indicating that the switch between pressing the unlock button twice/three times has taken effect.</p> <p>⑧Braking force increase (five settings)</p> <p>1.Press and hold the switch button until hearing the eighth short beep sound.</p> <p>2.After releasing the button, you will hear a long beep sound and three short beeps indicating that the switch between pressing the unlock button twice/three times has taken effect.</p> <p>3.Repeat this step to increase by one setting.</p>	<p>⑨Restore to factory settings</p> <p>1.Press and hold the switch button until hearing the ninth short beep sound.</p> <p>2.After releasing the button, you will hear a long beep sound and four short beeps indicating that the restoration to the factory setting has taken effect.</p> <p>4. Meanings of the buzzer sound:</p> <p>"Beep" once: Receiving an open/close or pause signal, the tailgate will immediately open/close or pause;</p> <p>"Beep" twice: The tailgate has been fully opened or closed;</p> <p>"Beep" three times: The resistance during opening or closing the tailgate is too large, and the intelligent anti-pinch has been turned on.</p>	