

Installation Manual

Compatible Model	CHaval Clouion (RHD)
Year	2021-2022



8-ETHF-5001-00-00

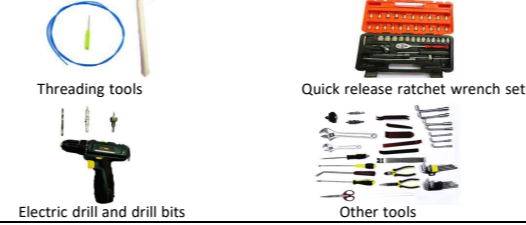
1. Points to note

- For safety and to ensure the proper use of product, please ask a professional technician to install. Do not disassemble and install it privately in case of damaging product and installation accidents.
- Please arrange each wiring harness according to the wiring method in this manual, be sure to tie each wiring harness to the vehicle's original wiring harness with cable ties. Make sure the wiring harnesses are not located at the fasteners or screw holes to avoid the wiring harnesses crushed by the vehicle interior trim panel buckles and screws during the installation process.
- Because some of the wiring harness terminals (as shown in the red ellipses below) are not inserted into the wiring harness connectors during manufacture, please insert terminals into the wiring harness connector first to avoid short circuit between terminals after the wiring harnesses have been arranged, then connect other plugs of the wiring harnesses (as shown in the blue ellipses below) with the original plugs.



- Check the function display of instrument panel before installation, whether the button of the vehicle is working properly, whether the doors and windows work properly while opening and closing, whether there are scratches on the internal and external surfaces of the vehicle; and report to the customers in a timely manner if there are any problems.
- During the process of disassembly and assembly, do not carry metal ornaments and other hard objects with you to prevent damage to the paintwork, seats and interior. Be sure to place the removed trim components properly to avoid scratching them.
- All the pictures in this manual are for reference only, vehicle models with different configurations may have different pictures, but the installation methods are the same.

2. Installation tools



3. Product list

No.	Name	QTY	Picture
①	Strut	2	
②	ECU	1 set	
③	Wiring harness	1 set	
④	Power latch	1	
⑤	Added tailgate switch	1	
⑥	Other parts (screws, brackets, etc.)	1 set	Omitted



1. Remove the front left side door sill panel and storage box.



2. Remove the rear left side door sill panel and B-pillar trim panel.



3. Remove the tailgate trim panel.



4. Take out the floor mat and foam storage box from the trunk. Remove the left side trim panel and door sill panel.



5. Remove the original gas struts.



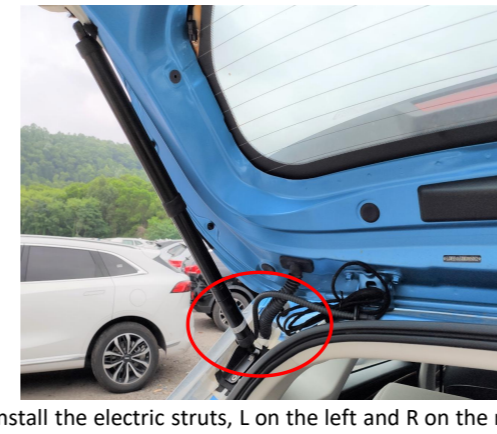
6. Replace the left body bracket



7. Replace the right body bracket.



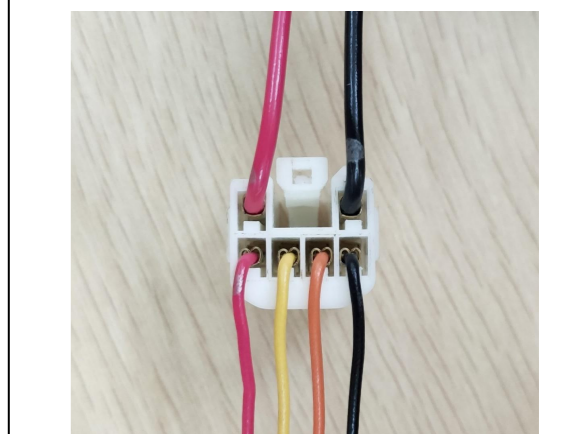
8. Replace the tailgate ball studs on both sides of the tailgate.



9. Install the electric struts, L on the left and R on the right (the first letter of the strut code), making sure the ends with wiring harnesses are on the vehicle body.



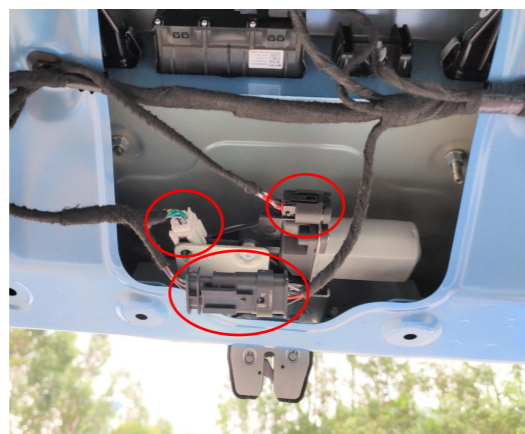
10. Thread the strut wiring harnesses through holes into the tailgate and route them as shown above.



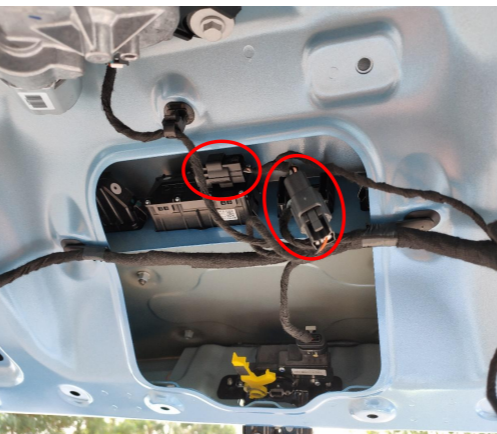
11. Insert the strut wiring harness terminals into the wiring harness connector.



12. Remove the original latch and install the power latch.



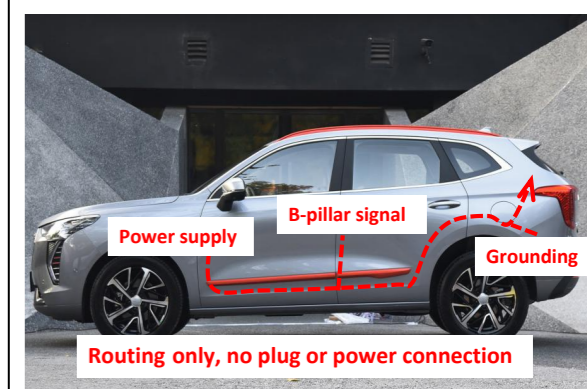
13. Connect the plugs of the lock signal harness to the plugs of the power latch.



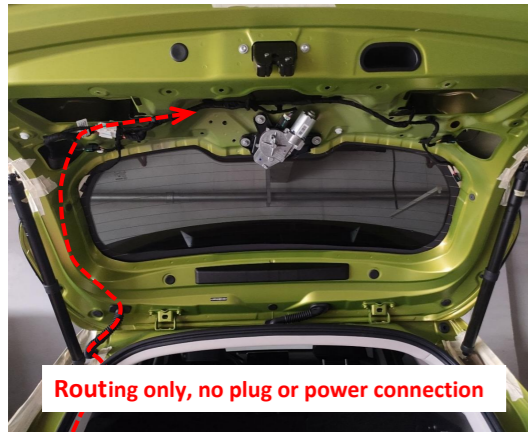
14. Connect the plugs of the lock signal harness to the plugs of the original tailgate switch.



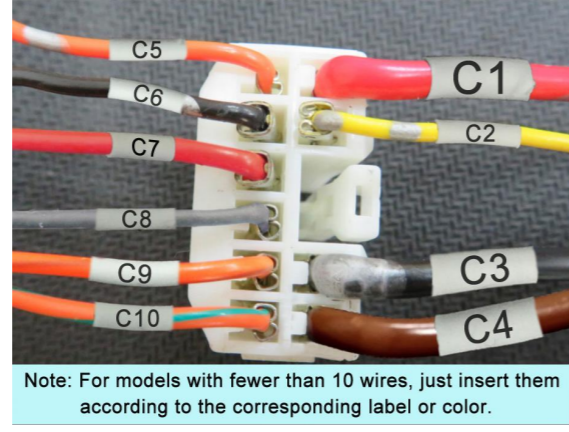
15. Connect the plugs of the lock signal harness to the added tailgate switch.



16. Route the power harness (routing only, no plug or power connection). If you want to install the front switch, route the front switch wiring harness in the same way.



17. Thread power harness to the tailgate (routing only, no plug or power connection).



18. Insert the power harness terminals into the wiring harness connector as shown above.



19. Ground at the left side of the trunk.



20. Connect the power harness to the B-pillar plugs at the rear left side B-pillar.

Check if all the plugs are properly connected.

21. Check all the plugs.



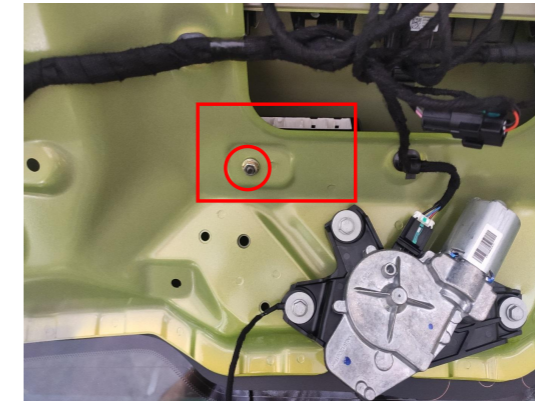
22. Locate the fuse box. If the fuse box is located at the driver's area, thread the the fuse tap from the front passenger side to the driver side.



23. The fuse slot for power supply is indicated above.



24. Move the fuse from the fuse box to the fuse tap and then plug the fuse tap into the fuse box. Pay attention to the direction.



25. Secure the ECU at the indicated position.



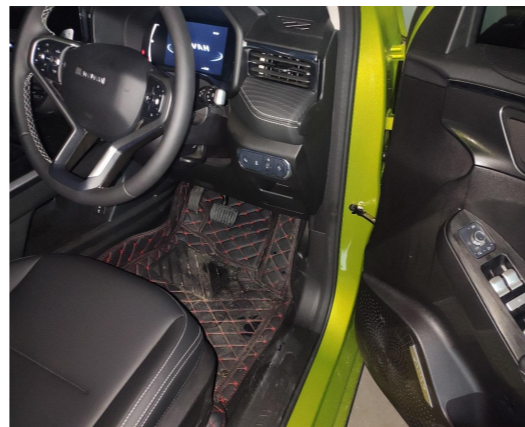
26. Insert the strut wiring harnesses ①②, lock signal harness ③, and power harness ④ into the ECU in sequence.



27. Press the added tailgate switch button to open and close the tailgate once for initializing the system, and then test each function of the electric tailgate.



28. Reinstall all trim panels and install the added tailgate switch (remove the original small cover panel).



(Optional) Drill a hole with a $\phi 21$ mm drill bit at an appropriate position and install the added front switch.

5. System initialization method

1. Press the added tailgate switch button to make the tailgate close automatically;
2. Press the switch button outside the tailgate to open the tailgate and it will make a long sound of "beep".
3. The system initialization is complete.

6. Instructions for the electric tailgate

1. Methods to open and close the tailgate:
 - Press the unlock button on the remote key 3 times;
 - Press the unlock button at the driver's area 3 times;
 - Press the added front switch button: press and hold to open, press once to close;
 - Press the original tailgate switch button;
 - Press the added tailgate switch button.

2. Method to pause the tailgate:

During the operation of the tailgate, press the button with any of the above methods, and the tailgate will be paused. Press again, and the tailgate will move in reverse.

3. Method to memorize the height:

Open the tailgate to the height you want to set, long press the added tailgate switch, and release the switch after hearing a long "beep ----". The height memory is complete.
Tip: During the operation of the tailgate, pause the tailgate, and then push the tailgate to the ideal height with your hand.

4. Meanings of the buzzer sound:

"Beep" once: Receiving an open/close or pause signal, the tailgate will immediately open/close or pause;
"Beep" twice: The tailgate has been fully opened or closed;
"Beep" three times: The resistance during opening or closing the tailgate is too large, and the intelligent anti-pinch has been turned on;
Long sound of "beep": The height memory is complete.