

Installation Manual

Compatible Model	BMW 5-CTSeries G38
Year	2018



8-ETBM-5002-00-00

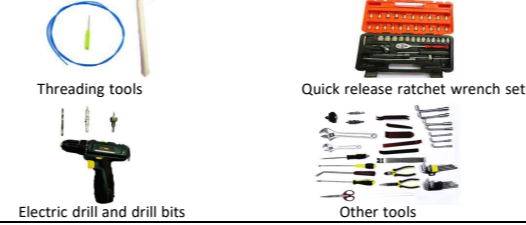
1. Points to note

- For safety and to ensure the proper use of product, please ask a professional technician to install. Do not disassemble and install it privately in case of damaging product and installation accidents.
- Please arrange each wiring harness according to the wiring method in this manual, be sure to tie each wiring harness to the vehicle's original wiring harness with cable ties. Make sure the wiring harnesses are not located at the fasteners or screw holes to avoid the wiring harnesses crushed by the vehicle interior trim panel buckles and screws during the installation process.
- Because some of the wiring harness terminals (as shown in the red ellipses below) are not inserted into the wiring harness connectors during manufacture, please insert terminals into the wiring harness connector first to avoid short circuit between terminals after the wiring harnesses have been arranged, then connect other plugs of the wiring harnesses (as shown in the blue ellipses below) with the original plugs.



- Check the function display of instrument panel before installation, whether the button of the vehicle is working properly, whether the doors and windows work properly while opening and closing, whether there are scratches on the internal and external surfaces of the vehicle; and report to the customers in a timely manner if there are any problems.
- During the process of disassembly and assembly, do not carry metal ornaments and other hard objects with you to prevent damage to the paintwork, seats and interior. Be sure to place the removed trim components properly to avoid scratching them.
- All the pictures in this manual are for reference only, vehicle models with different configurations may have different pictures, but the installation methods are the same.

2. Installation tools



3. Product list

No.	Name	QTY	Picture
①	Strut	2	
②	ECU	1 set	
③	Wiring harness	1 set	
④	Power latch	1	
⑤	Added tailgate switch	1	
⑥	Other parts (screws, brackets, etc.)	1 set	Omitted



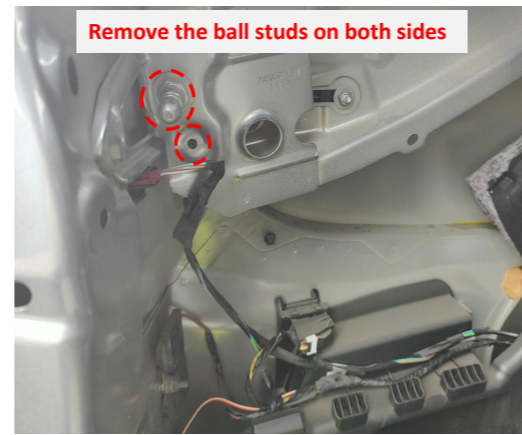
1. Remove the indicated trim panels from the tailgate and hinges.



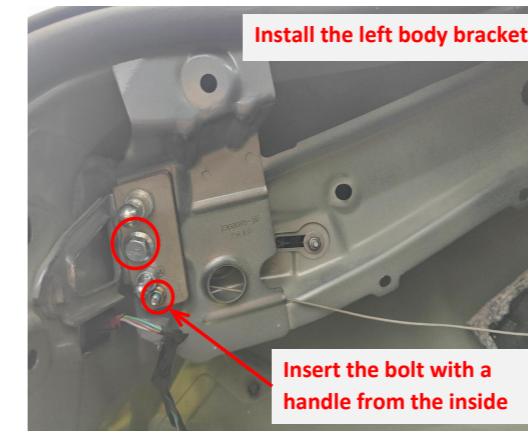
2. Remove the indicated trim panels from the trunk.



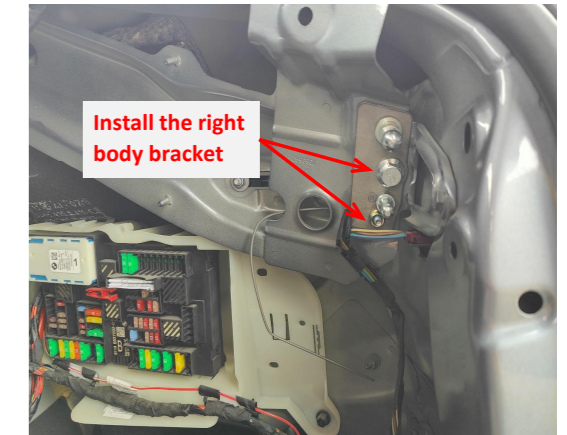
3. Remove the springs on both sides.



4. Remove the ball the stud on both sides and install the bracket on that hole and the hole under it.



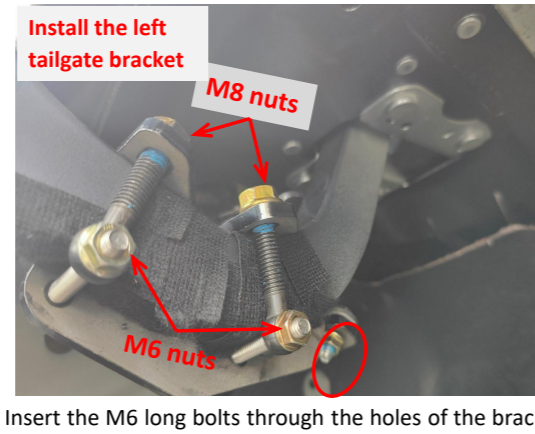
5. Install the left body bracket. Insert the bolt with a handle from the inside and secure it with a nut.



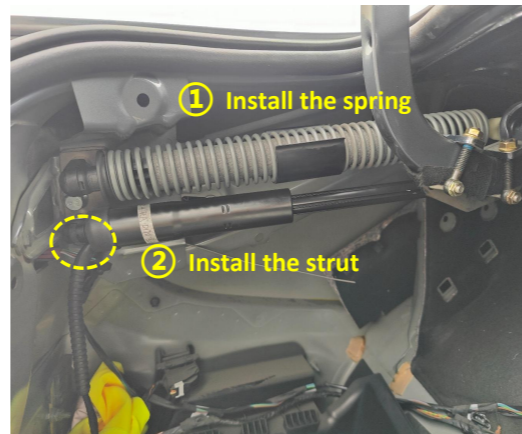
6. Install the right body bracket in the same way.



7. Install the left tailgate bracket on the left hinge.



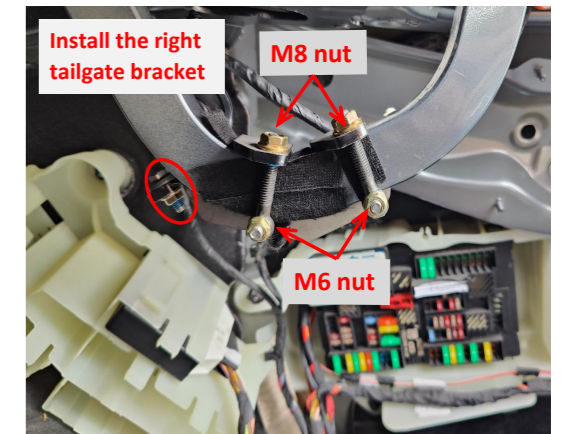
8. Insert the M6 long bolts through the holes of the bracket into the holes of eye bolts, then insert the eye bolts into the upper holes of the bracket and secure them with nuts.



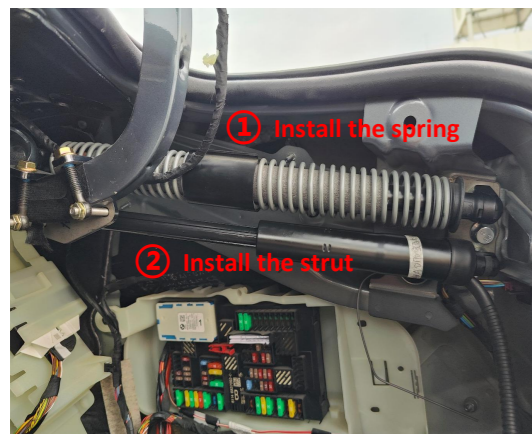
9. Install the left spring on the upper ball stud and the strut on the lower ball stud.



10. Remove the indicated cable clips from the right hinge.



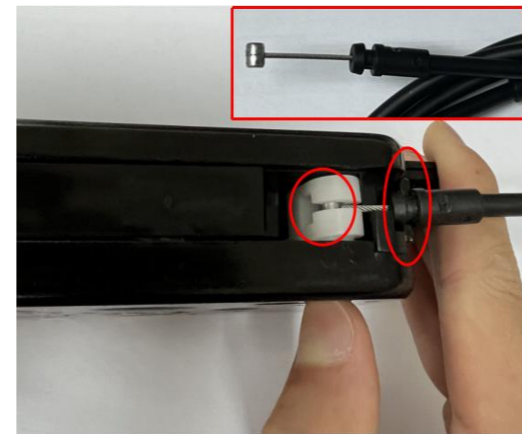
11. Install the right tailgate bracket on the right hinge in the same way.



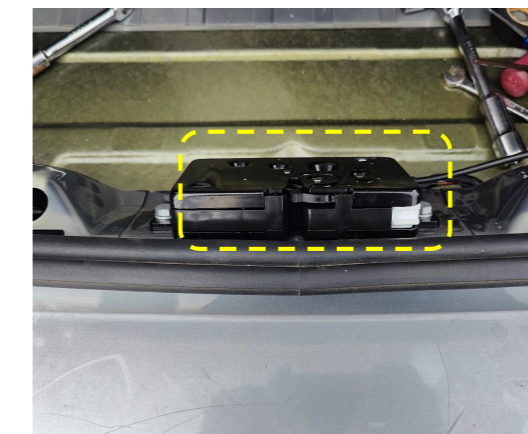
12. Install the right spring and strut in the same way.



13. Unfasten the unlock arm of the power latch for installing the emergency cable.



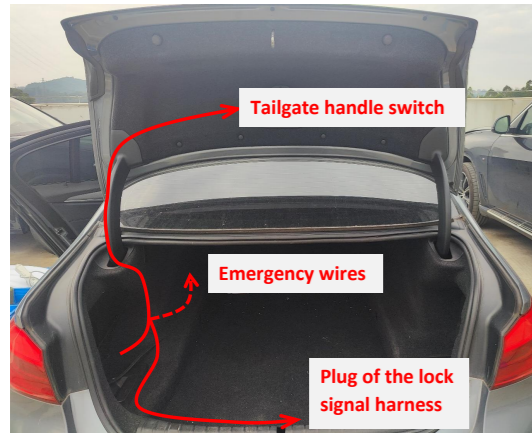
14. Put the cylindrical head of the cable into the reserve hole of the unlock arm and secure it at the indicated slot.



15. Remove the original latch, Install the power latch and adjust the latch to the locked state manually.



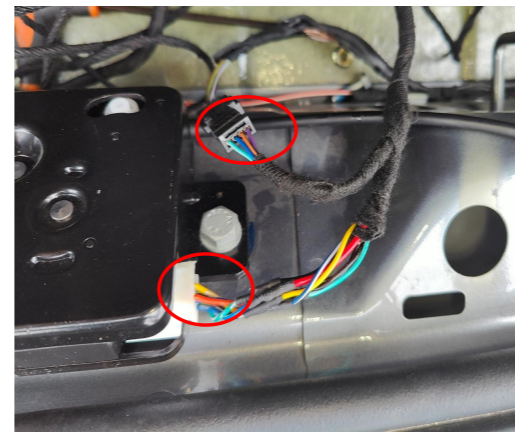
16. Thread the emergency cable to the right side of the rear seat and hide it under the door sill panel.



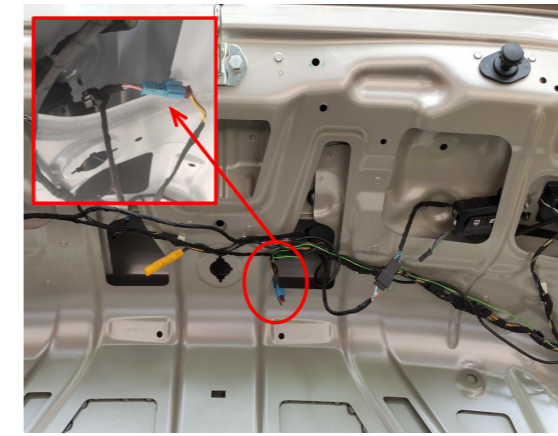
17. Route the lock signal harness as indicated.



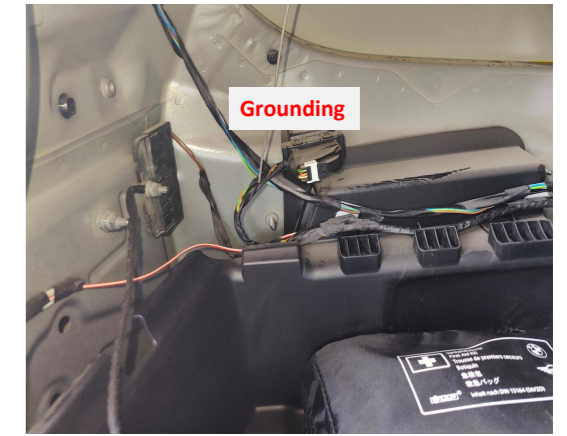
18. Thread the emergency wires to the left side of the rear seat and hide them in the trim panel.



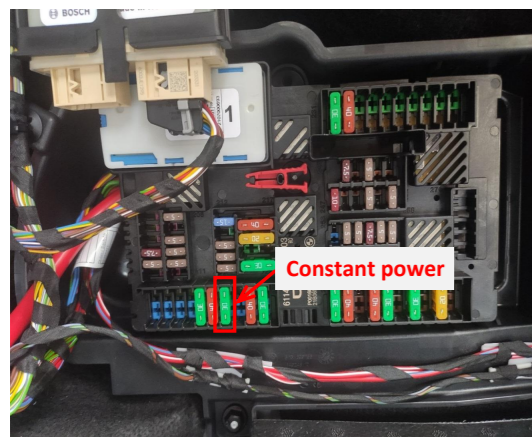
19. Connect the plugs of the lock signal harness to the power latch.



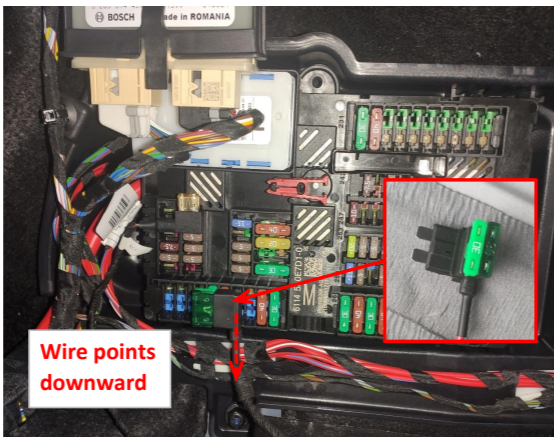
20. Connect the plug of the lock signal harness to the tailgate handle switch.



21. Ground at the indicated position of the left side of the trunk.



22. The fuse box is located at the trunk and the fuse box for power supply is indicated.



23. Move the fuse from the fuse box to the fuse tap and plug the fuse tap into the fuse box.



24. Insert the Lock signal harness ①, power harness ② into the ECU. Manually adjust the power latch to the locked state, press the original tailgate switch button and see whether the latch can be unlocked. If not, check whether the plugs are properly connected.



25. Install the ECU at the indicated position on the left side of the trunk.



26. Insert the left and right strut wiring harnesses ①②, lock signal harness ③, and power harness ④ into the ECU in sequence.



27. Press the tailgate switch buttons to close and open the tailgate once to complete the initialization, and then test each function of the electric tailgate.



28. Stick the provided hole template to the indicated position and open a hole for the added tailgate switch.



29. Reinstall all the trim panels and install the added tailgate switch.

5. System initialization method

1. Press the added tailgate switch button to make the tailgate close automatically;
2. Press the switch button outside the tailgate to open the tailgate and it will make a long sound of "beep".
3. The system initialization is complete.

6. Instructions for the electric tailgate

1. Methods to open and close the tailgate:
- Press and hold the tailgate button on the remote key;
 - Press and hold the tailgate button at the driver's area;
 - Press the tailgate handle switch button;
 - Press the added tailgate switch button.

2. Method to pause the tailgate:

During the operation of the tailgate, press the button with any of the above methods, and the tailgate will be paused. Press again, and the tailgate will move in reverse.

3. Instructions for the added tailgate switch

- ① Closing speed acceleration (5 Settings)
1. Press and hold the switch button until hearing the first short beep sound.
 2. After releasing the button, you will hear a short beep, indicating that the closing speed acceleration has taken effect.
 3. Repeat this step once to increase by one setting.
- ② Opening speed acceleration (5 Settings)
1. Press and hold the switch button until hearing the second short beep sound
 2. After releasing the button, you will hear two short beeps, indicating that the opening speed acceleration has taken effect.
 3. Repeat this step once to increase by one setting.
- ③ Settings of the voice module
1. Press and hold the switch button until hearing the third short beep sound.
 2. After releasing the button, you will hear three short beeps, indicating that the voice module has entered configuration mode. (For details, see the voice module operation manual)
 - ④ Block the voice module
1. Press and hold the added switch button until hearing the fourth beep sound.
 2. After releasing the button, you will hear three four beeps indicating that the voice module has been blocked.

- ⑤ Height setting
1. Press and hold the switch button until hearing the fifth short beep sound.
 2. After releasing the button, you will hear a long beep sound indicating that the height setting has taken effect.
- ⑥ Switch between quick/slow press of the unlock button on remote key
1. Press and hold the switch button until hearing the sixth short beep sound.
 2. After releasing the button, you will hear a long beep sound and a short beep sound indicating that the switch between quick and slow press of the unlock button has taken effect.
- ⑦ Switch between pressing the unlock button twice/three times
1. Press and hold the switch button until hearing the seventh short beep sound.
 2. After releasing the button, you will hear a long beep sound and two short beeps indicating that the switch between pressing the unlock button twice/three times has taken effect.
- ⑧ Braking force increase (five settings)
1. Press and hold the unlock button until hearing the eighth short beep sound.
 2. After releasing the button, you will hear a long beep sound and three short beeps indicating that the switch between pressing the unlock button twice/three times has taken effect.
 3. Repeat this step to increase by one setting.

- ⑨ Restore to factory settings
1. Press and hold the unlock button until hearing the ninth short beep sound.
 2. After releasing the button, you will hear a long beep sound and four short beeps indicating that the restoration to the factory setting has taken effect.
4. Meanings of the buzzer sound:
- "Beep" once: Receiving an open/close or pause signal, the tailgate will immediately open/close or pause;
- "Beep" twice: The tailgate has been fully opened or closed;
- "Beep" three times: The resistance during opening or closing the tailgate is too large, and the intelligent anti-pinch has been turned on.