

Installation Manual

Compatible Model	CToyota CLand Cruiser (RHD)
Year	2011-2015



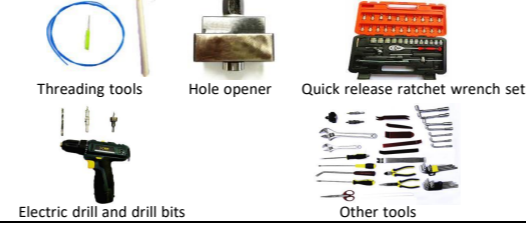
1. Points to note

- For safety and to ensure the proper use of product, please ask a professional technician to install. Do not disassemble and install it privately in case of damaging product and installation accidents.
- Please arrange each wiring harness according to the wiring method in this manual, be sure to tie each wiring harness to the vehicle's original wiring harness with cable ties. Make sure the wiring harnesses are not located at the buckles or screw holes to avoid the wiring harnesses crushed by the vehicle interior trim panel buckles and screws during the installation process.
- Because some of the wiring harness terminals (as shown in the red ellipses below) are not inserted into the wiring harness connectors during manufacture, please insert terminals into the wiring harness connector first to avoid short circuit between terminals after the wiring harnesses have been arranged, then connect other plugs of the wiring harnesses (as shown in the blue ellipses below) with the original plugs.



- Check the function display of instrument panel before installation, whether the button of the vehicle is working properly, whether the doors and windows work properly while opening and closing, whether there are scratches on the internal and external surfaces of the vehicle; and report to the customers in a timely manner if there are any problems.
- During the process of disassembly and assembly, do not carry metal ornaments and other hard objects with you to prevent damage to the paintwork, seats and interior. Be sure to place the removed trim components properly to avoid scratching them.
- All the pictures in this manual are for reference only, vehicle models with different configurations may have different pictures, but the installation methods are the same.

2. Installation tools



3. Product list

No.	Name	QTY	Picture
①	Strut	2	
②	ECU	1 set	
③	Wiring harness	1 set	
④	Power latch	1	
⑤	Added tailgate switch	1	
⑥	Other parts (screws, brackets, etc.)	1 set	Omitted



1. Install the corresponding reinforcing washers to the hinges with provided screws according to different vehicle models.



2. Remove the front left side trim panels, door sill panel and storage box.



3. Remove the rear left door sill panel and B-pillar trim panel.



4. Remove the tailgate trim panels (there are screws in the circles).



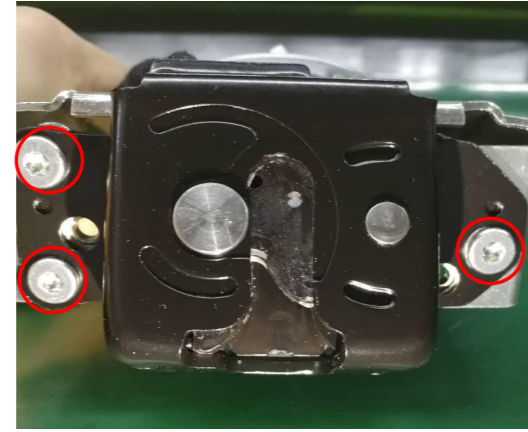
5. Remove the trim panels on the left side of the trunk.



6. Remove the original latch.



7. Connect the plugs of the lock signal harness to the original tailgate switch



8. Remove the screws from the power latch.



9. Install the power latch.



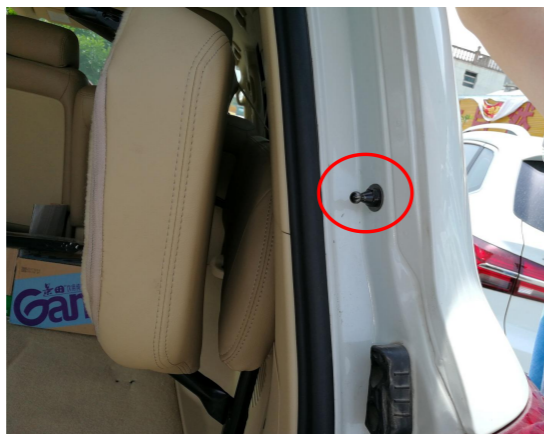
10. Connect the plugs of the lock signal harness to the added power latch.



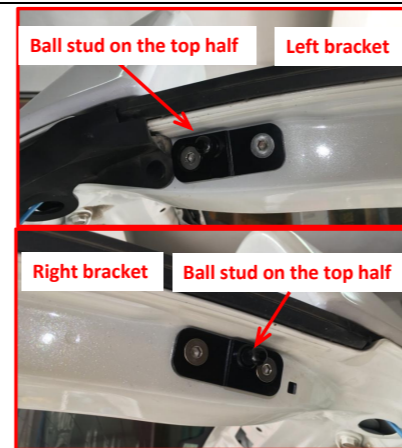
11. Connect the plug of the lock signal harness to the added tailgate switch.



12. Remove the gas struts.



13. Replace the left and right body ball studs.



14. Replace the left and right tailgate brackets (the ball studs are on the top half and near the spoiler).



15. Install the electric struts, L on the left and R on the right (the first letter of the strut code).



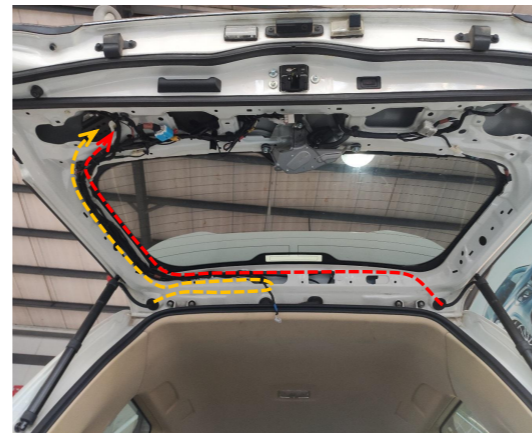
16. Remove left and right tailgate rubber pads.



17. Open a hole at the indicated position of the rubber pads (as long as the plugs of strut wiring harness can fit through).



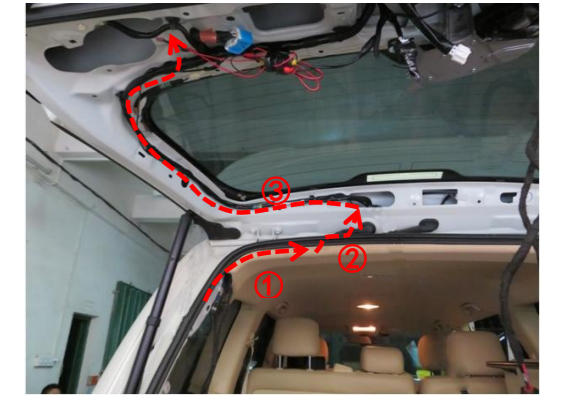
18. Remove the screw from the hole and thread the strut wiring harness through the hole.



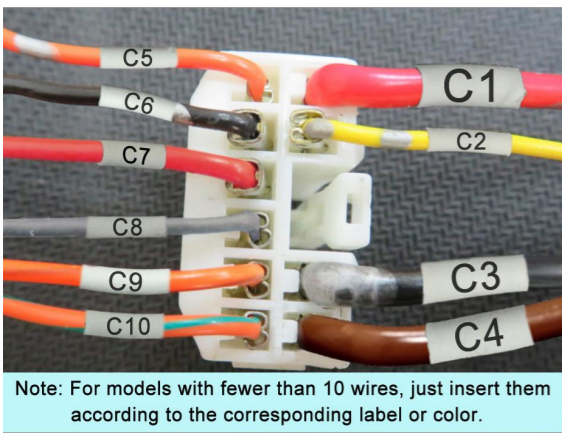
19. Route the strut wiring harnesses as indicated.



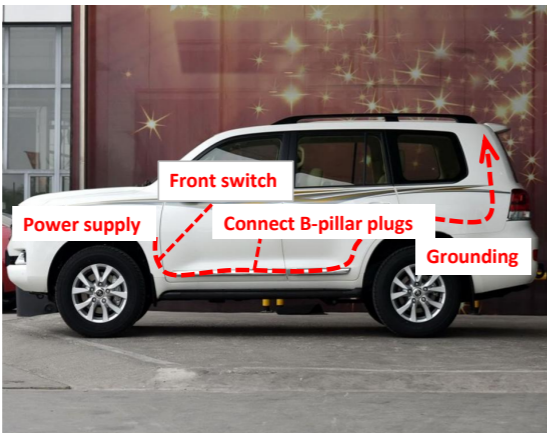
20. Reinstall the screw and plug the hole tightly. Both sides are the same.



21. Thread the power harness to the left side of tailgate (do not connect plugs before inserting terminals into wiring harness connector).



22. Insert the power harness terminals into the wiring harness connector according to the diagram.



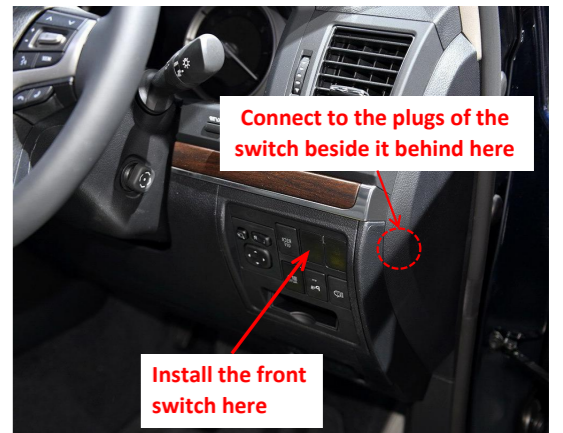
23. Route the power harness.



24. Ground at the indicated position.



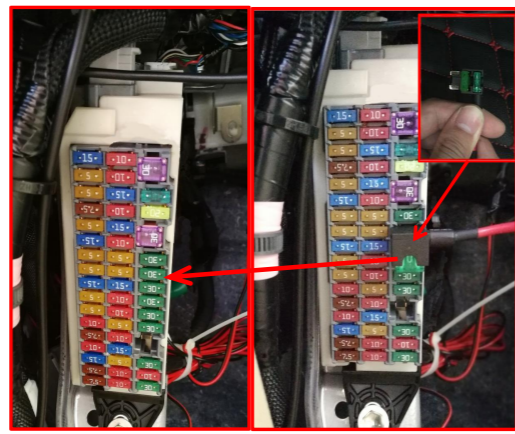
25. Thread the switch wiring harness to the driver's position.



26. Remove the blank button from the switch panel and install the added front switch.



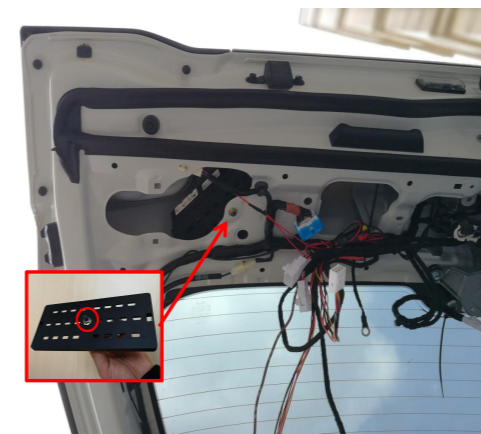
27. Connect the plugs of power harness to the B-pillar signal plugs.



28. Move the indicated fuse (sixth in the rightmost column), to the fuse tap and then plug the fuse tap into the fuse box.



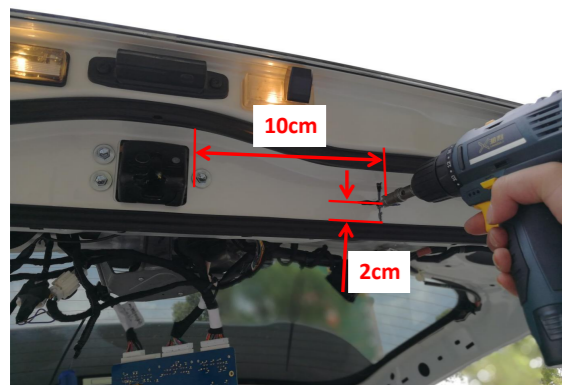
29. Insert the strut wiring harnesses ①②, lock signal harness ③, and power harness ④ into the ECU in sequence, and mount the ECU on its bracket.



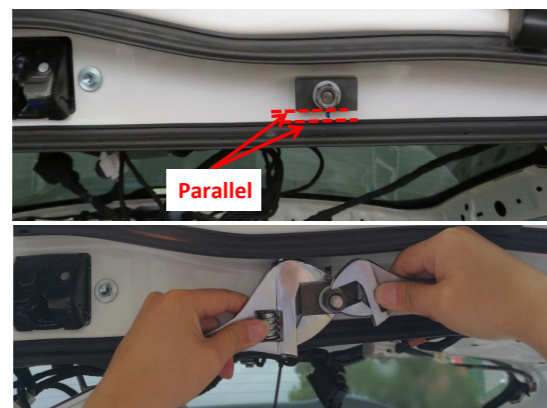
30. Screw a nut on the ECU bracket first and then fix it to the indicated hole.



31. Initialize the system once, and then test the functions of the electric tailgate.



32. Drill a hole at the right side of the tailgate using a φ 14mm drill bit.



33. Install the hole opener (make sure its edge is parallel to the lower edge of the tailgate) and open the hole (one wrench holds the hole opener and the other wrench turns the nut).



33. Install all the trim panels back and install the added tailgate switch.

5. System initialization method

1. Press the added tailgate switch button to make the tailgate close automatically;
2. Press the switch button outside the tailgate to open the tailgate and it will make a long sound of "beep";
3. The system initialization is complete.

6. Instructions for the electric tailgate

1. Methods to open and close the tailgate:
 - Press the unlock button on the remote key 3 times;
 - Press the unlock button at the driver's area 3 times;
 - Press the original tailgate switch button;
 - Press the added tailgate switch button to close;
 - Press the added front switch button: press and hold for 4s to open and press once to close.

2. Method to pause the tailgate:

During the operation of the tailgate, press the button with any of the above methods, and the tailgate will be paused. Press again, and the tailgate will move in reverse.

3. Method to memorize the height:

Open the tailgate to the height you want to set, long press the added tailgate switch, and release the switch after hearing a long "beep ----". The height memory is complete. Tip: During the operation of the tailgate, pause the tailgate, and then push the tailgate to the ideal height with your hand.

4. Meanings of the buzzer sound:

"Beep" once: Receiving an open/close or pause signal, the tailgate will immediately open/close or pause;
"Beep" twice: The tailgate has been fully opened or closed;
"Beep" three times: The resistance during opening or closing the tailgate is too large, and the intelligent anti-pinch has been turned on;
Long sound of "beep": The height memory is complete.