

Installation Manual

Compatible Model	CToyota CAvalon
Year	2019-2024



8-ETTY-5107-02-00

1. Points to note

- For safety and to ensure the proper use of product, please ask a professional technician to install. Do not disassemble and install it privately in case of damaging product and installation accidents.
- Please arrange each wiring harness according to the wiring method in this manual, be sure to tie each wiring harness to the vehicle's original wiring harness with cable ties. Make sure the wiring harnesses are not located at the fasteners or screw holes to avoid the wiring harnesses crushed by the vehicle interior trim panel buckles and screws during the installation process.
- Because some of the wiring harness terminals (as indicated by the red ellipses below) are not plugged into the wiring harness connectors during manufacture, please insert terminals into the wiring harness connector first to avoid short circuit between terminals after the wiring harnesses have been arranged, then connect other plugs of the wiring harnesses (as indicated by the blue ellipses below) with the original plugs.



- Check the function display of instrument panel before installation, whether the button of the vehicle is working properly, whether the doors and windows work properly while opening and closing, whether there are scratches on the vehicle internal and exterior surfaces; and report to the customers in a timely manner if there are any problems.
- During the process of disassembly and assembly, do not carry metal ornaments and other hard objects with you to prevent damage to the paintwork, seats and interior. Be sure to place the removed trim components properly to avoid scratching them.
- All the pictures in this manual are for reference only, vehicle models with different configurations may have different pictures, but the installation methods are the same.

2. Installation tools



3. Product list

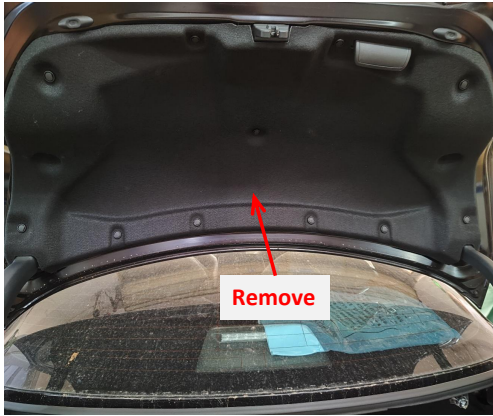
No.	Name	QTY	Picture
①	Strut	2	
②	ECU	1 set	
③	Wiring harness	1 set	
④	Power latch	1	
⑤	Added tailgate switch	1	
⑥	Other parts (screws, brackets, etc.)	1 set	Omitted



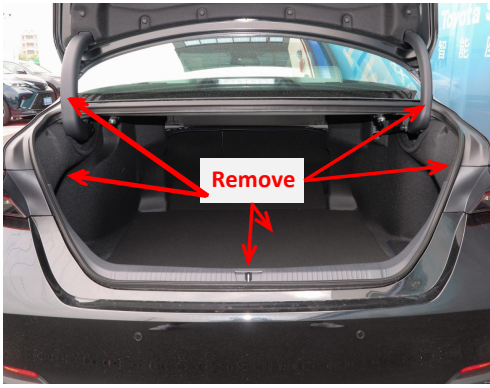
1. Remove the front left side trim panel and door sill panel.



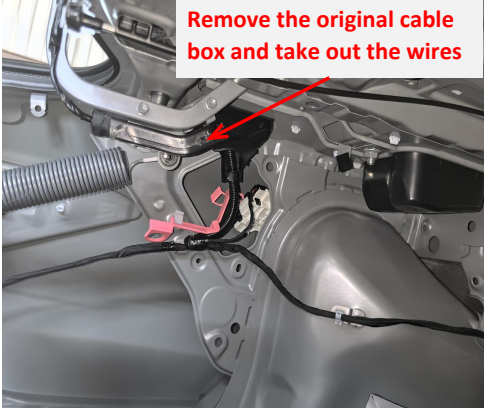
2. Remove the rear left door sill panel and B-pillar trim panel.



3. Remove the tailgate trim panel.



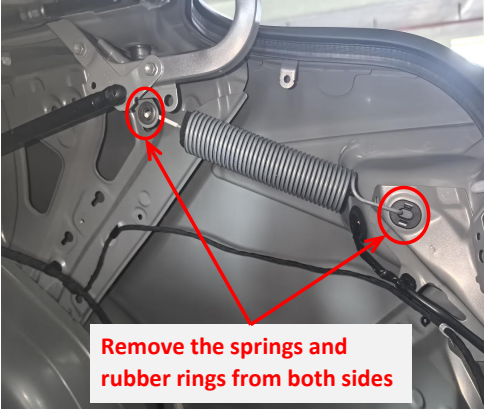
4. Remove the trunk trim panels and the hinge trim panels.



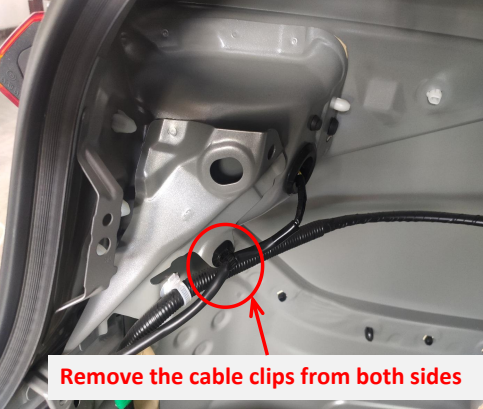
5. Remove the original cable box from the left hinge and take out the wires



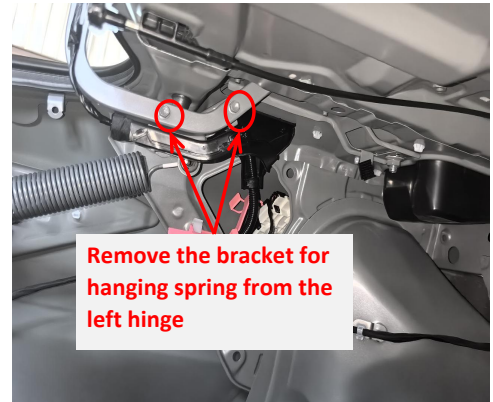
6. Fold all the rear seats.



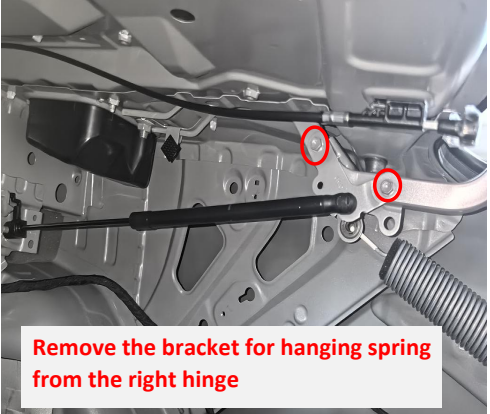
7. Remove the springs and rubber rings from both sides.



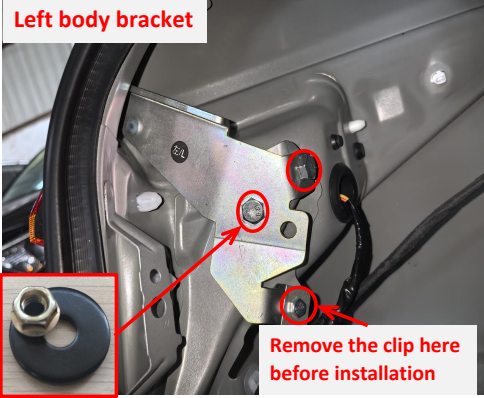
8. Remove the indicated cable clips from both sides.



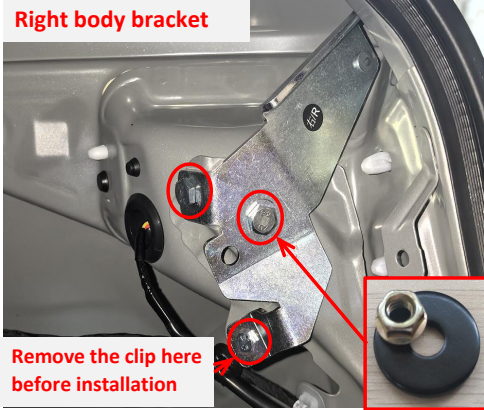
9. Remove the bracket for hanging spring from the left hinge.



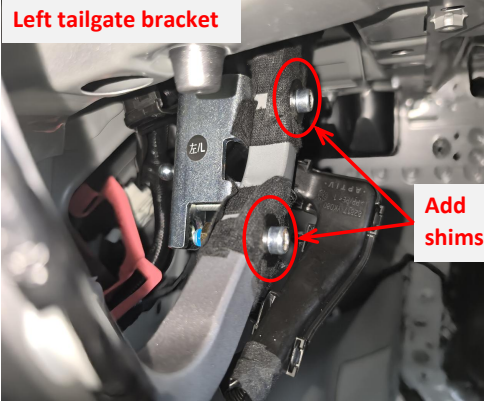
10. Remove the bracket for hanging spring from the right hinge



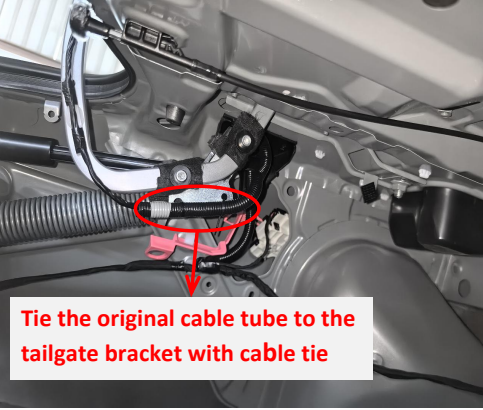
11. Install the left body bracket.



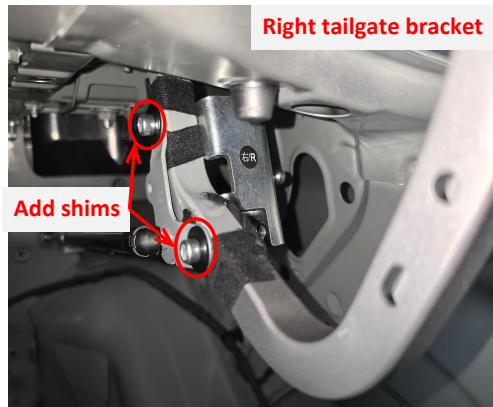
12. Install the right body bracket.



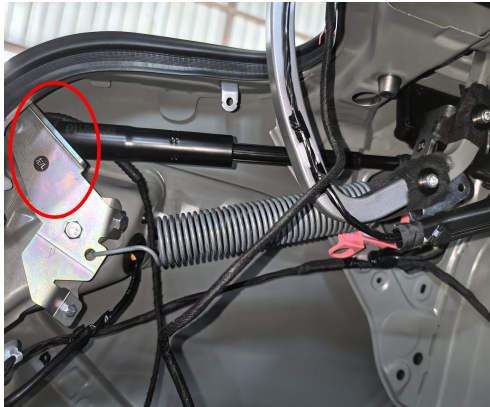
13. Install the left tailgate bracket.



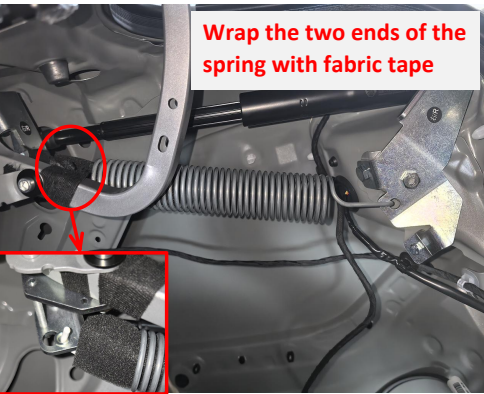
14. Tie the original cable tube to the tailgate bracket with cable tie.



15. Right tailgate bracket(reinstall the gas strut and strut bracket).



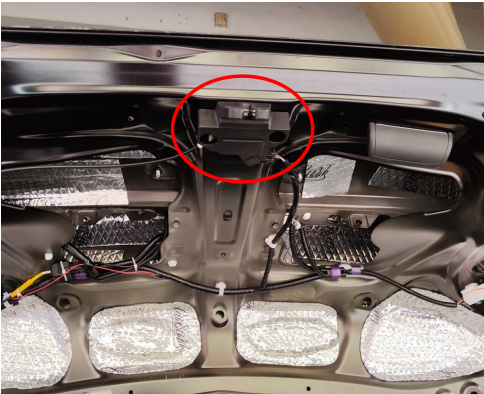
16. Install the electric struts, L on the left and R on the right (the first letter of the strut code). Pay attention to the direction.



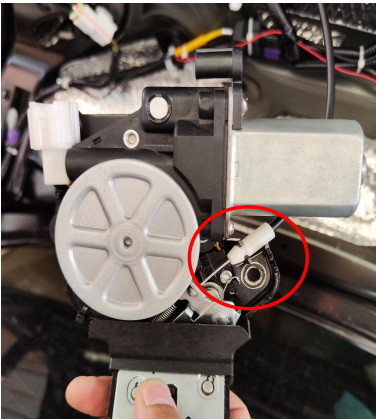
17. Hang the original springs on our brackets and Wrap the two ends of the spring with fabric tape.



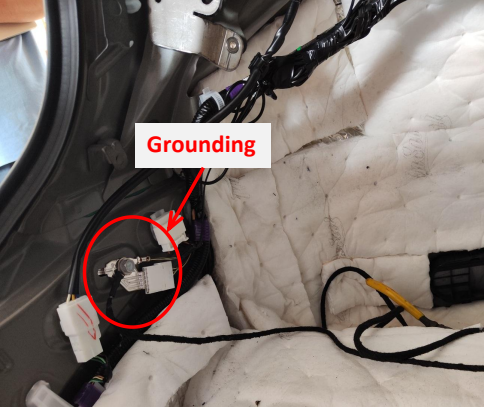
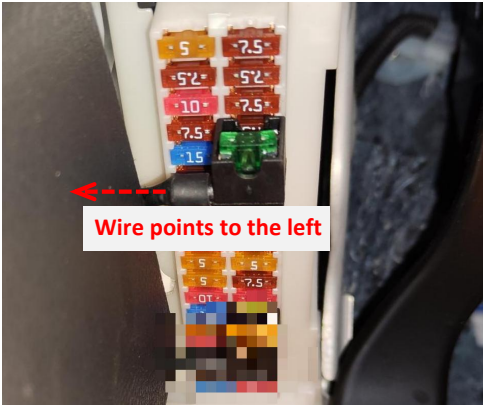
18. Route the strut wiring harness as indicated.



19. Remove the original latch and latch cable.



20. Mount the original emergency cable onto the power latch (there are two fasteners, choose the inside one).

 <p>Adjust the latch to the locked state</p>					
21. Install the power latch and manually adjust the latch to the locked state. (If the car is the 2024 Avalon, replace the lock striker with the provided one)	22. Connect the plugs of the lock signal harness to the plugs of the power latch.	23. Connect the plugs of the lock signal harness to the plugs of original tailgate switch.	24. Install the added tailgate switch with original screws.	25. Wrap the two emergency wires of the power latch with the electrical tape and hide them under the rear left side trim panel.	26. Route the power harness
				<p>Check if all the plugs are properly connected. Unlock the tailgate with original emergency key and check whether the power latch can be unlocked normally to see whether the emergency cable is properly installed.</p>	
27. Route the lock signal harness to the trunk along with original wiring harness.	28. Route the lock signal harness along with original wiring harness.	29. Route the power harness along with original wiring harness.	30. Ground at the left side of the trunk.	31. Check all the plugs.	32. The fuse box is located at the left side of the pedal in the driver's area and the fuse slot for power supply is indicated above.
				<p>1. Manually adjust the latch to the locked state; 2. Manually close the tailgate to the position where the latch touches the lock striker; 3. Press the original tailgate switch button to open the tailgate and check whether the tailgate can be opened normally and the latch can be unlocked normally; 4. Confirm that the latch and the electric struts function well before continuing to install.</p>	
33. Plug the fuse tap into the fuse box and pay attention to the direction.	34. Insert the left and right strut wiring harnesses①②, lock signal harness③, and power harness④ into the ECU in sequence.	35. Secure the ECU bracket at the indicated position.	36. Secure the ECU with a nut.	37. Check if the power latch and the struts function well.	38. Press the added tailgate switch to close the tailgate once, the system completes initialization, and then test each function of the electric tailgate.
	<p>5. System initialization method</p> <p>1. Press the added tailgate switch button, and the tailgate will close automatically;</p> <p>2. Press the tailgate switch button outside the tailgate to open the tailgate and it will make a long sound of "beep".</p> <p>3. The system initialization is complete.</p> <p>6. Instructions for the electric tailgate</p> <p>1. Methods to open and close the tailgate:</p> <ul style="list-style-type: none">●Press and hold the tailgate button on the remote key;●Press and hold the tailgate button at the driver's area;●Press the original tailgate switch button;●Press the added tailgate switch button. <p>2. Method to pause the tailgate:</p> <p>During the operation of the tailgate, press the button with any of the above methods, and the tailgate will be paused. Press again, and the tailgate will move in reverse.</p>	<p>3. Instructions for the added tailgate switch</p> <p>①Closing speed acceleration (5 Settings)</p> <p>1.Press and hold the switch button until hearing the first short beep sound</p> <p>2.After releasing the button, you will hear a short beep, indicating that the closing speed acceleration has taken effect.</p> <p>3.Repeat this step once to increase by one setting.</p> <p>②Opening speed acceleration (5 Settings)</p> <p>1.Press and hold the switch button until hearing the second short beep sound</p> <p>2. After releasing the button, you will hear two short beeps, indicating that the opening speed acceleration has taken effect.</p> <p>3. Repeat this step once to increase by one setting.</p> <p>③Settings of the voice module</p> <p>1.Press and hold the switch button until hearing the third short beep sound.</p> <p>2.After releasing the button, you will hear three short beeps, indicating that the voice module has entered configuration mode. (For details, see the voice module operation manual)</p> <p>④Block the voice module</p> <p>1.Press and hold the switch button until hearing the fourth beep sound.</p>	<p>2.After releasing the button, you will hear four short beeps indicating that the voice module has been blocked.</p> <p>⑤Height setting</p> <p>1.Press and hold the switch button until hearing the fifth short beep sound.</p> <p>2.After releasing the button, you will hear a long beep sound indicating that the height setting has taken effect.</p> <p>⑥Switch between quick/slow press of the unlock button on remote key</p> <p>1.Press and hold the added tailgate switch button until hearing the sixth short beep sound.</p> <p>2.After releasing the button, you will hear a long beep sound and a short beep sound indicating that the switch between quick press and slow press of the unlock button has taken effect.</p> <p>⑦Switch between pressing the unlock button twice/three times</p> <p>1.Press and hold the switch button until hearing the seventh short beep sound.</p> <p>2.After releasing the button, you will hear a long beep sound and two short beeps indicating that the switch between pressing the unlock button twice/three times has taken effect.</p>	<p>⑧Braking force increase (5 Settings)</p> <p>1.Press and hold the switch button until hearing the eighth short beep sound.</p> <p>2.After releasing the button, you will hear a long beep sound and three short beeps indicating that the switch between pressing the unlock button twice/three times has taken effect.</p> <p>⑨Restore to factory settings</p> <p>1.Press and hold the switch button until hearing the ninth short beep sound.</p> <p>2.After releasing the button, you will hear a long beep sound and four short beeps indicating that the restoration to the factory setting has taken effect.</p> <p>4. Meanings of the buzzer sound:</p> <p>"Beep" once: Receiving an open/close or pause signal, the tailgate will immediately open/close or pause;</p> <p>"Beep" twice: The tailgate has been fully opened or closed;</p> <p>"Beep" three times: The resistance during opening or closing the tailgate is too large, and the intelligent anti-pinch has been turned on.</p>	
38. Reinstall all the trim panels.					