

Installation Manual

Compatible Model	CVolkswagen CSagitar
Year	2023



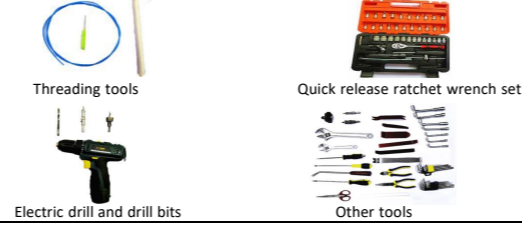
1. Points to note

- For safety and to ensure the proper use of product, please ask a professional technician to install. Do not disassemble and install it privately in case of damaging product and installation accidents.
- Please arrange each wiring harness according to the wiring method in this manual, be sure to tie each wiring harness to the vehicle's original wiring harness with cable ties. Make sure the wiring harnesses are not located at the fasteners or screw holes to avoid the wiring harnesses crushed by the vehicle interior trim panel buckles and screws during the installation process.
- Because some of the wiring harness terminals (as shown in the red ellipses below) are not inserted into the wiring harness connectors during manufacture, please insert terminals into the wiring harness connector first to avoid short circuit between terminals after the wiring harnesses have been arranged, then connect other plugs of the wiring harnesses (as shown in the blue ellipses below) with the original plugs.



- Check the function display of instrument panel before installation, whether the button of the vehicle is working properly, whether the doors and windows work properly while opening and closing, whether there are scratches on the internal and external surfaces of the vehicle; and report to the customers in a timely manner if there are any problems.
- During the process of disassembly and assembly, do not carry metal ornaments and other hard objects with you to prevent damage to the paintwork, seats and interior. Be sure to place the removed trim components properly to avoid scratching them.
- All the pictures in this manual are for reference only, vehicle models with different configurations may have different pictures, but the installation methods are the same.

2. Installation tools



3. Product list

No.	Name	QTY	Picture
①	Strut	2	
②	ECU	1 set	
③	Wiring harness	1 set	
④	Power latch	1	
⑤	Added tailgate switch	1	
⑥	Other parts (screws, brackets, etc.)	1 set	Omitted



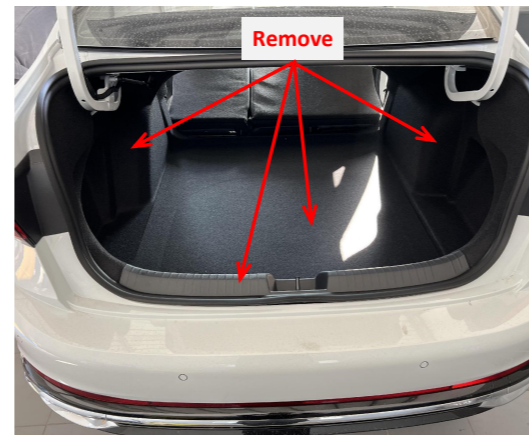
1. Remove the front left side door sill panel and the trim panels of the fuse box.



2. Remove the rear left door sill panel and B-pillar trim panel.



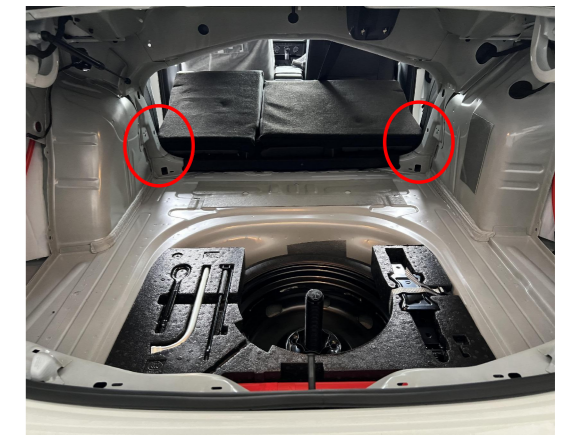
3. Fold the rear seats.



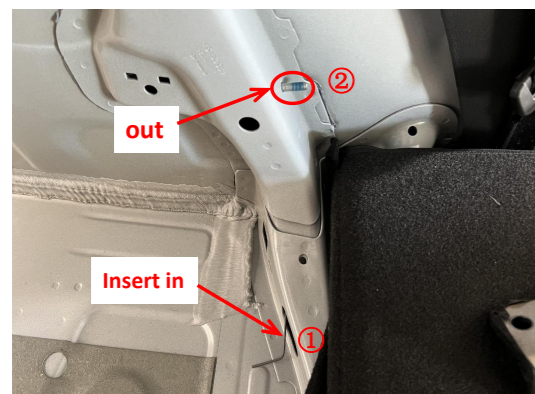
4. Take out the trunk floor mat and the indicated trim panels.



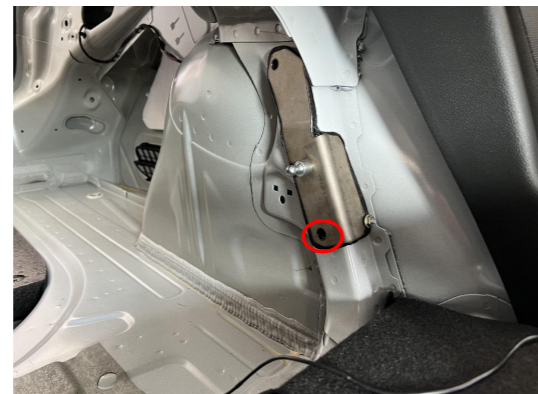
5. Remove the tailgate trim panels.



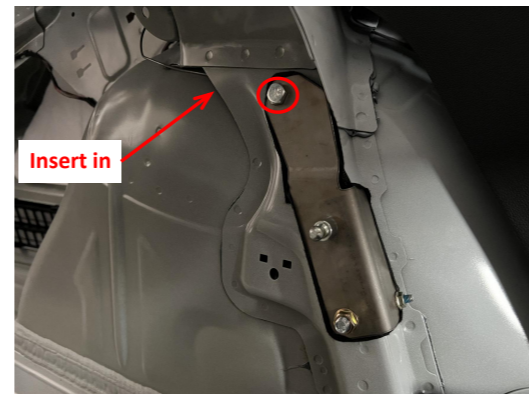
6. Install the left and right body brackets at the indicated positions.



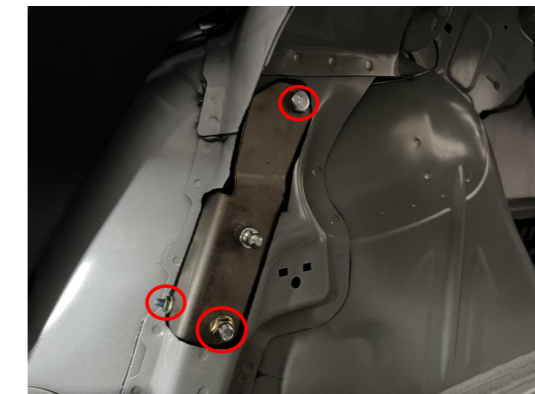
7. Install the left body bracket: insert the M6 bolt with handle into the position ① and make it out from the indicated position ②.



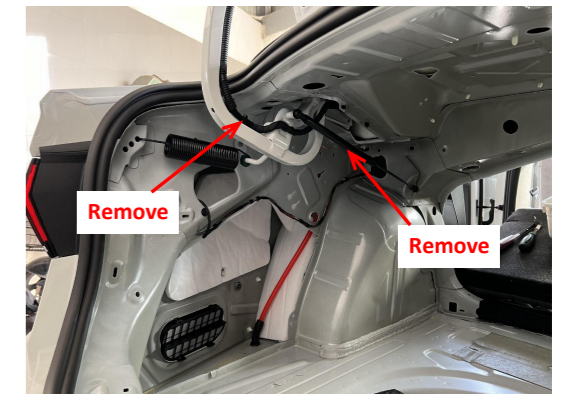
8. Secure the left body bracket at the indicated position first and insert the M10 bolt into the position ① and make it out from the indicated position.



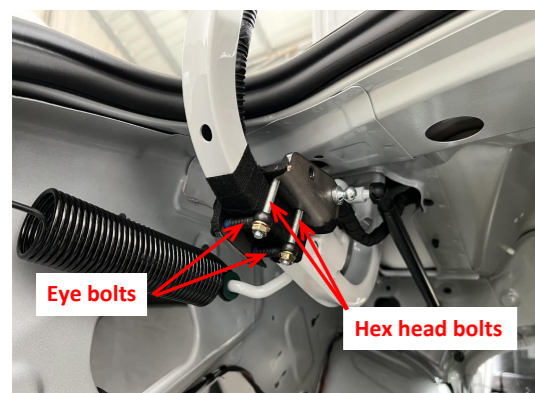
9. Insert the nut with handle into the indicated position and screw the nut onto the indicated bolt.



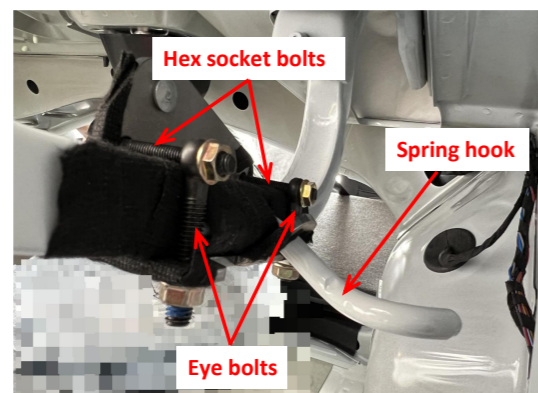
10. Install the right body bracket in the same way.



11. Remove the original cable clip and gas strut.



12. Install the left tailgate bracket on the hinge, insert the locating pin into the hole of cable clip and secure the hex head bolts and eye bolts as indicated.



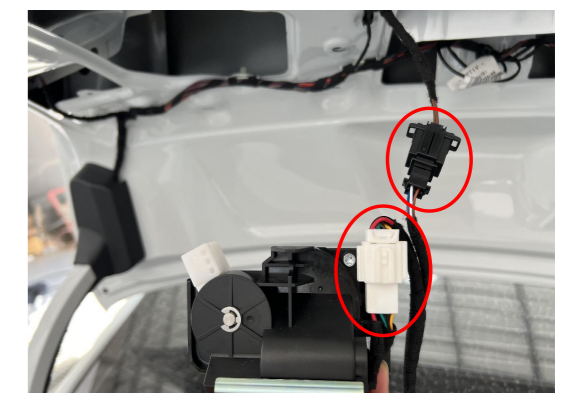
13. Fit the locating hole of the bracket onto the spring hook and install the hex socket bolts and eye bolts as indicated.



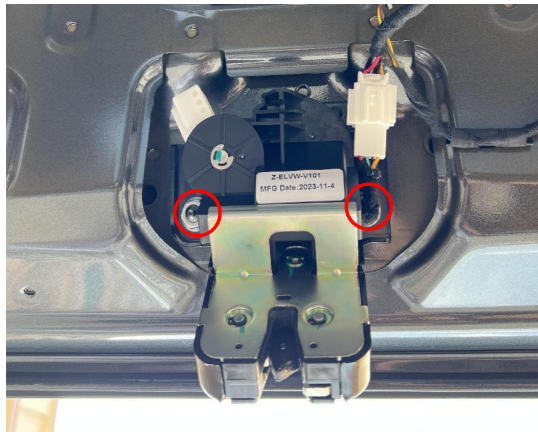
14. Tighten the nuts on those bolts.



15. Remove the original latch.



16. Connect the plugs of the lock signal harness to the power latch.

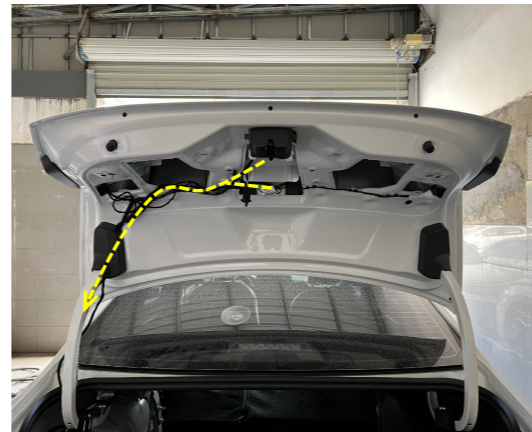


17. Install the power latch and put the original plastic casing on the power latch.

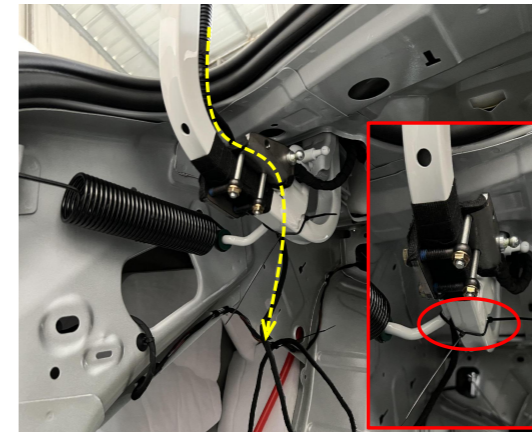


Connect to the original tailgate switch

18. Connect the plugs of the lock signal harness to the plugs of the original tailgate switch.



19. Route the lock signal harness to the left side of the trunk.



20. Tie the lock signal harness to the hinge as indicated and leave a certain length.

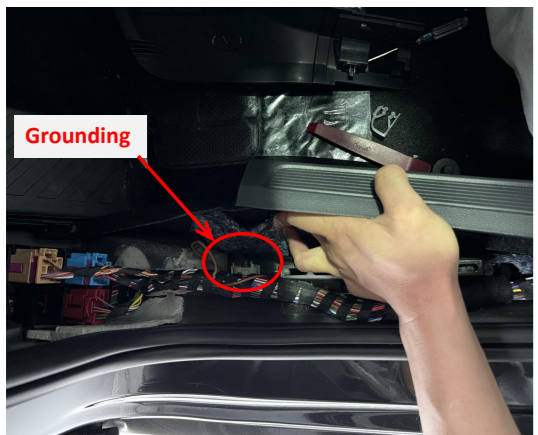


Power supply

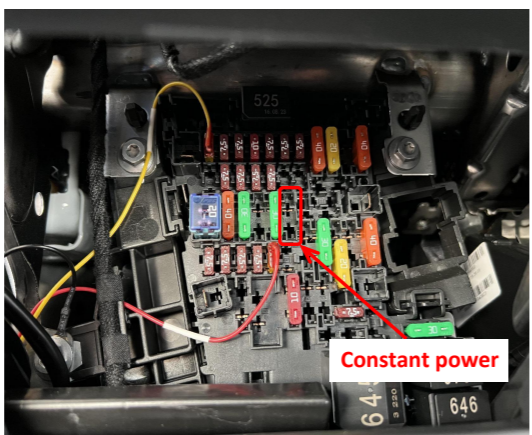
Grounding

Routing only, no terminals insertion or power

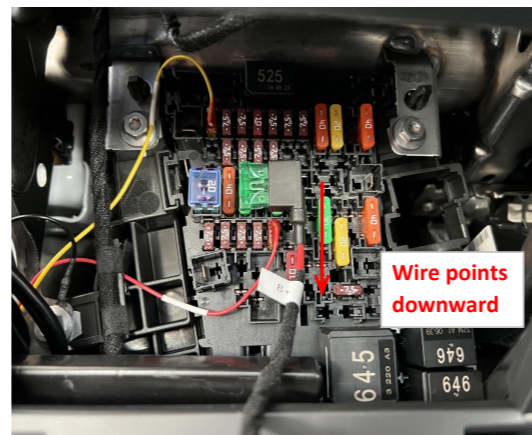
21. Route the power harness.



22. Ground at the left side of the driver's position.



23. The fuse box is located the driver's position and the fuse slot for power supply is indicated.



Wire points downward

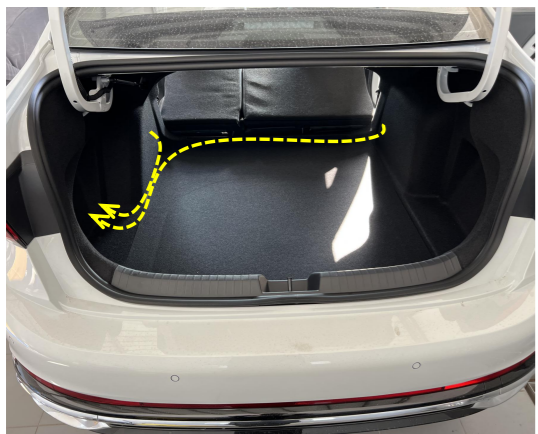
24. Plug the fuse tap into the fuse box and pay attention to the direction of wire.



25. Open a hole at the indicated position to expose the ball stud of the body bracket and thread the strut wiring harness through the hole.



26. Install the electric struts, L on the left and R on the right (the first letter of the strut code).



27. Route the strut wiring harnesses to the left side of the trunk.



28. Secure the ECU at the indicated position with a nut.



29. Insert the left and right strut wiring harnesses ①②, lock signal harness ③, and power harness ④ into the ECU in sequence.

1. Adjust the latch to the locked state by hand;
2. Manually close the tailgate to the position where the latch touches the lock striker;
3. Press the original tailgate switch button to open the tailgate and check whether the tailgate can be opened normally and the latch can be unlocked normally;
4. Confirm that the latch and the electric struts function well before continuing to install.

30. Check whether the power latch and the electric struts function well.



31. Press the original tailgate switch button to open the tailgate once, the system completes initialization, and then test each function of the electric tailgate.



32. Stick the hole template to the indicated position and open a hole for the added tailgate switch.



33. Install the added tailgate switch and reinstall all trim panels.

5. System initialization method

1. Press the added tailgate switch button to make the tailgate close automatically;
2. Press the switch button outside the tailgate to open the tailgate and it will make a long sound of "beep".
3. The system initialization is complete.

6. Instructions for the electric tailgate

1. Methods to open and close the tailgate:
 - Press and hold the tailgate button on the remote key;
 - Press the tailgate button at the driver's area;
 - Press the original tailgate switch button to open;
 - Press the added tailgate switch button to close.

2. Method to pause the tailgate:

During the operation of the tailgate, press the button with any of the above methods, and the tailgate will be paused. Press again, and the tailgate will move in reverse.

3. Instructions for the added tailgate switch

① Closing speed acceleration
Press and hold the added switch button on tailgate until hearing a beep sound. When the tailgate makes a short beep sound again, the close speed acceleration is complete. (There are five speed settings. Repeat this step once to increase by one setting.)

② Opening speed acceleration
Press and hold the added switch button on tailgate until hearing two beep sounds. When the tailgate makes two short beep sounds again, the open speed acceleration is complete. (There are five speed settings. Repeat this step once to increase by one setting.)

③ Height setting
Press and hold the added switch button on tailgate until hearing three beep sounds. When the tailgate makes three short beep sounds again, the height setting is complete. Tip: During the operation of the tailgate, pause the tailgate, and then push the tailgate to the ideal height.

④ Switch between quick/slow press of the unlock button on remote key
Press and hold the added switch button on tailgate until hearing four beep sounds. When the tailgate makes four short beep sounds again, the switch of pressing way is complete.

⑤ Switch between pressing the unlock button twice/three times
Press and hold the added switch button on tailgate until hearing five beep sounds. When the tailgate makes a long beep sound, the switch of pressing times is complete.

⑥ Braking force increase (Retention force for open)
Press and hold the added switch button on tailgate until hearing six beep sounds. When the tailgate makes two long beep sounds, the braking force increase is complete. (There are five speed settings. Repeat this step once to increase by one setting.)

⑦ Restore to factory settings
Press and hold the added switch button on tailgate until hearing seven beep sounds. When the tailgate makes three long beep sounds, the reset is complete.

4. Meanings of the buzzer sound:

"Beep" once: Receiving an open/close or pause signal, the tailgate will immediately open/close or pause;
"Beep" twice: The tailgate has been fully opened or closed;
"Beep" three times: The resistance during opening or closing the tailgate is too large, and the intelligent anti-pinch has been turned on;
Long sound of "beep": The height memory is complete.