

# Installation Manual

Compatible Model	Claguar CXEL
Year	2018



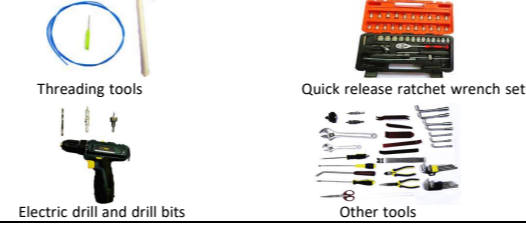
## 1. Points to note

- For safety and to ensure the proper use of product, please ask a professional technician to install. Do not disassemble and install it privately in case of damaging product and installation accidents.
- Please arrange each wiring harness according to the wiring method in this manual, be sure to tie each wiring harness to the vehicle's original wiring harness with cable ties. Make sure the wiring harnesses are not located at the fasteners or screw holes to avoid the wiring harnesses crushed by the vehicle interior trim panel buckles and screws during the installation process.
- Because some of the wiring harness terminals (as shown in the red ellipses below) are not inserted into the wiring harness connectors during manufacture, please insert terminals into the wiring harness connector first to avoid short circuit between terminals after the wiring harnesses have been arranged, then connect other plugs of the wiring harnesses (as shown in the blue ellipses below) with the original plugs.



- Check the function display of instrument panel before installation, whether the button of the vehicle is working properly, whether the doors and windows work properly while opening and closing, whether there are scratches on the internal and external surfaces of the vehicle; and report to the customers in a timely manner if there are any problems.
- During the process of disassembly and assembly, do not carry metal ornaments and other hard objects with you to prevent damage to the paintwork, seats and interior. Be sure to place the removed trim components properly to avoid scratching them.
- All the pictures in this manual are for reference only, vehicle models with different configurations may have different pictures, but the installation methods are the same.

## 2. Installation tools

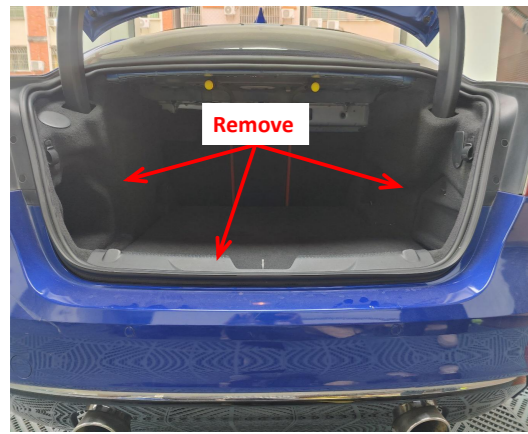


## 3. Product list

No.	Name	QTY	Picture
①	Strut	2	
②	ECU	1 set	
③	Wiring harness	1 set	
④	Power latch	1	
⑤	Added tailgate switch	1	
⑥	Other parts (screws, brackets, etc.)	1 set	Omitted



1. Remove the indicated trim panels from the tailgate and hinges.



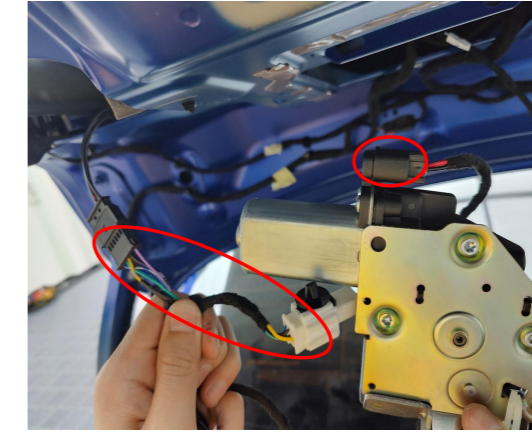
2. Remove the indicated trim panels from the trunk.



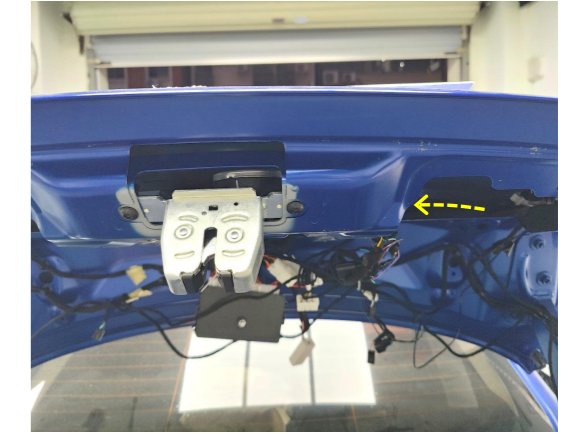
3. Remove the rear left door sill panel.



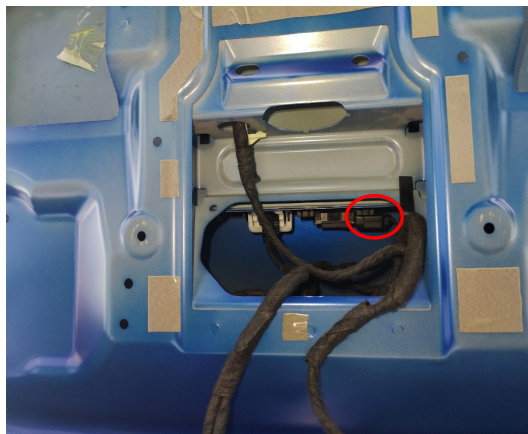
4. Remove the original latch and keep the two screws.



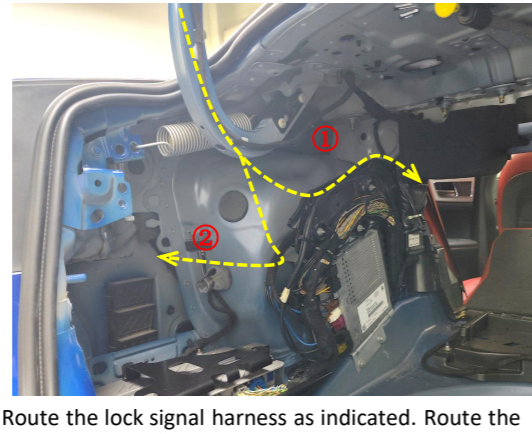
5. Connect the plugs of the lock signal harness to the power latch.



6. Install the power latch (put it in from the indicated hole and make sure the latch is locked).



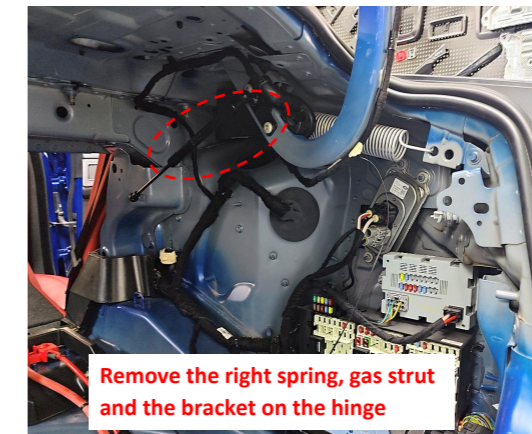
7. Connect the plugs of the lock signal harness to the original tailgate switch at the tailgate handle.



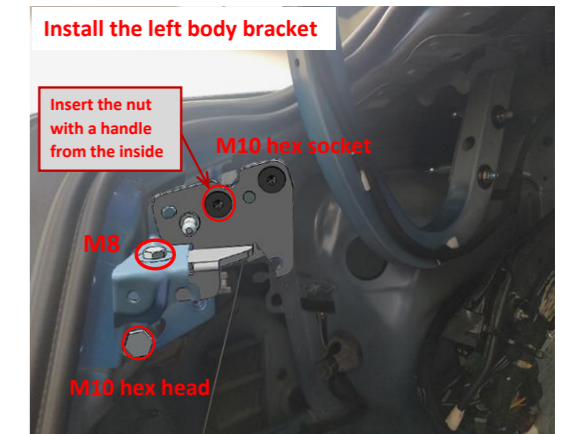
8. Route the lock signal harness as indicated. Route the emergency wires ① to the left side of the rear seat and route the plug ② near the ECU.



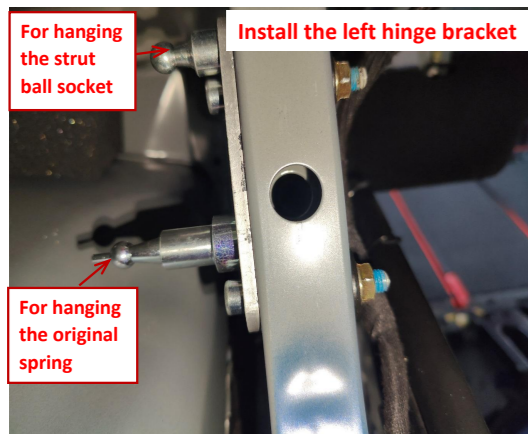
9. Remove the left spring and the bracket on the left hinge.



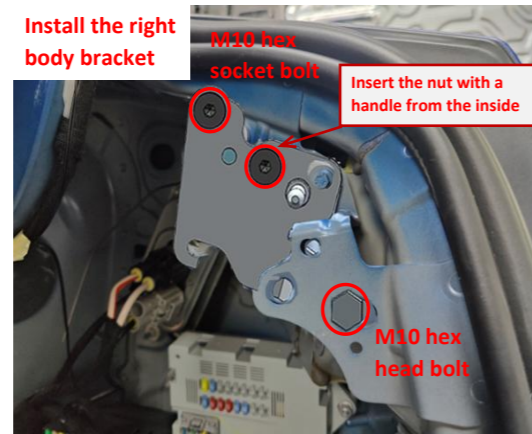
10. Remove the right spring, gas strut and the bracket on the hinge.



11. Install the left body bracket; insert the nut with a handle from the inside.



12. Install the bracket on the left hinge.



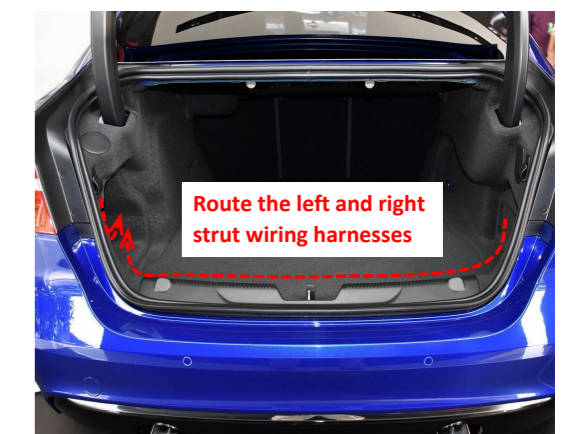
13. Install the right body bracket; insert the nut with a handle from the inside.



14. Install the bracket on the right hinge. Pay attention to the position for hanging spring and strut.



15. Install the left and right electric struts, L on the left, R on the right (the first letter of the strut code).

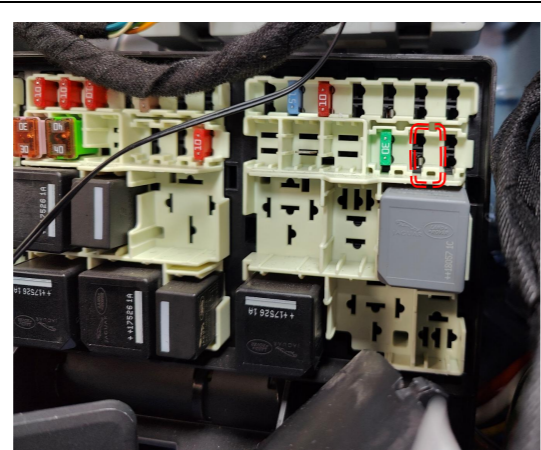


16. Route the strut wiring harnesses.

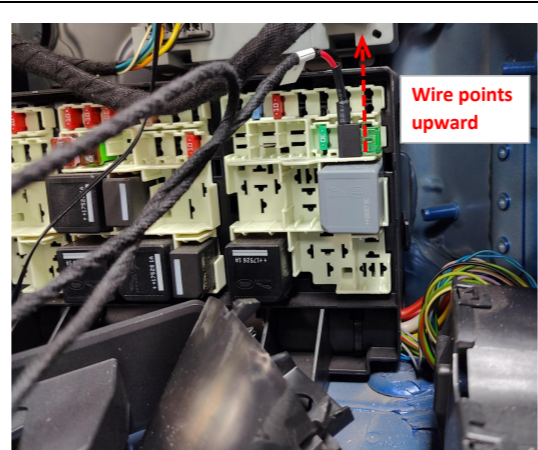




17. Ground at the indicated position on the left side of the trunk.



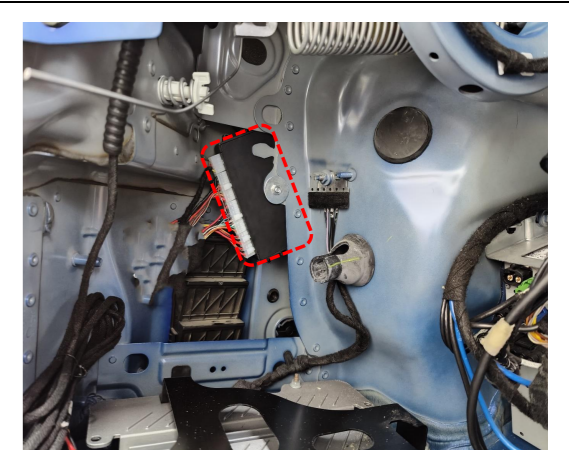
18. The fuse box is located at the right side of the trunk and the fuse slot for power supply is indicated.



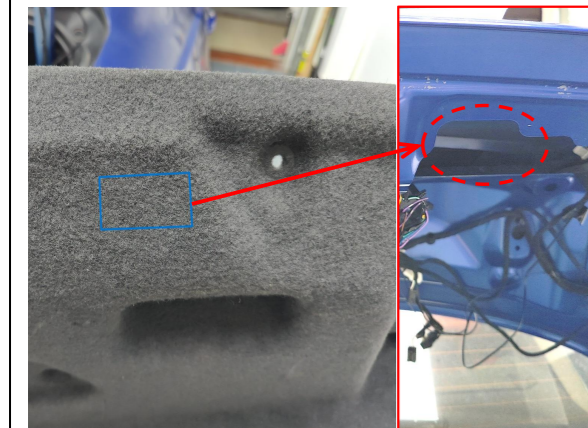
19. Plug the fuse tap into that slot with wire pointing upward.



20. Insert the left and right strut wire harnesses ① ②, lock signal harness ③, and power harness ④ into the ECU in sequence.



21. Install the ECU at the indicated position.



22. Align the trim panel with the tailgate sheet metal and locate the hole to be opened of the added tailgate switch.



23. Install the added tailgate switch and reinstall all the trim panels.



24. Close the tailgate to the position where the latch touches the striker, open and close the tailgate once, and test each function of the electric tailgate.

**5. System initialization method**

1. Press the added tailgate switch button to make the tailgate close automatically;
2. Press the switch button outside the tailgate to open the tailgate and it will make a long sound of "beep";
3. The system initialization is complete.

**6. Instructions for the electric tailgate**

1. Methods to open and close the tailgate:
  - Press and hold the unlock button on the remote key;
  - Press and hold the tailgate button at the driver's area;
  - Press the original tailgate switch button;
  - Press the added tailgate switch button.

2. Method to pause the tailgate:  
During the operation of the tailgate, press the button with any of the above methods, and the tailgate will be paused. Press again, and the tailgate will move in reverse.

3. Method to memorize the height:  
Open the tailgate to the height you want to set, long press the added tailgate switch, and release the switch after hearing a long "beep ----". The height memory is complete.  
Tip: During the operation of the tailgate, pause the tailgate, and then push the tailgate to the ideal height with your hand.

4. Meanings of the buzzer sound:  
"Beep" once: Receiving an open/close or pause signal, the tailgate will immediately open/close or pause;  
"Beep" twice: The tailgate has been fully opened or closed;  
"Beep" three times: The resistance during opening or closing the tailgate is too large, and the intelligent anti-pinch has been turned on;  
Long sound of "beep": The height memory is complete.