

Installation Manual

Compatible Model	CToyota CCamry
Year	2018-2022



8-ETTY-5106-01-00

1. Points to note

- For safety and to ensure the proper use of product, please ask a professional technician to install. Do not disassemble and install it privately in case of damaging product and installation accidents.
- Please arrange each wiring harness according to the wiring method in this manual, be sure to tie each wiring harness to the vehicle's original wiring harness with cable ties. Make sure the wiring harnesses are not located at the buckles or screw holes to avoid the wiring harnesses crushed by the vehicle interior trim panel buckles and screws during the installation process.
- Because some of the wiring harness terminals (as shown in the red ellipses below) are not inserted into the wiring harness connectors during manufacture, please insert terminals into the wiring harness connector first to avoid short circuit between terminals after the wiring harnesses have been arranged, then connect other plugs of the wiring harnesses (as shown in the blue ellipses below) with the original plugs.



- Check the function display of instrument panel before installation, whether the button of the vehicle is working properly, whether the doors and windows work properly while opening and closing, whether there are scratches on the vehicle internal and external surfaces; and report to the customers in a timely manner if there are any problems.
- During the process of disassembly and assembly, do not carry metal ornaments and other hard objects with you to prevent damage to the paintwork, seats and interior. Be sure to place the removed trim components properly to avoid scratching them.
- All the pictures in this manual are for reference only, vehicle models with different configurations may have different pictures, but the installation methods are the same.

2. Installation tools



3. Product list

No.	Name	QTY	Picture
①	Strut	2	
②	ECU	1 set	
③	Wiring harness	1 set	
④	Power latch	1	
⑤	Added Tailgate switch	1	
⑥	Other parts (screws, brackets, etc.)	1 set	Omitted



1. Remove the front left door sill panels.



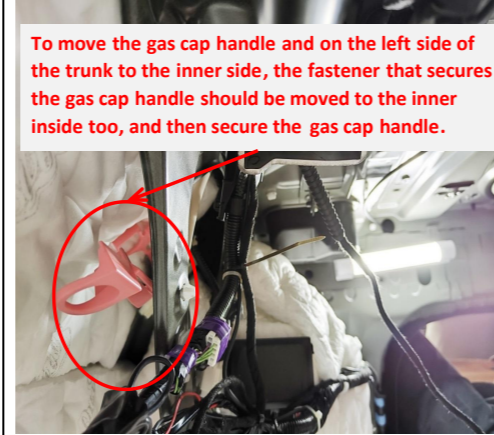
2. Remove the rear left door sill panel and B-pillar trim panel .



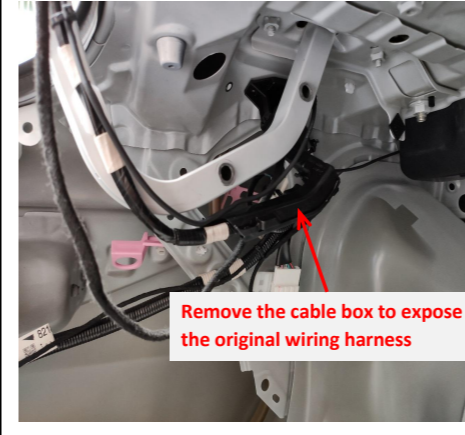
3. Remove the tailgate trim panel.



4. Take out the trunk floor mat and remove the trim panels on both sides of the trunk.



5. Move the gas cap handle on the left side of the trunk to the inner side to prevent interference.



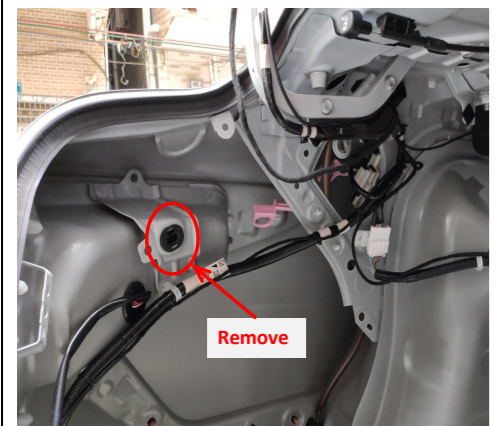
6. Remove the cable box from the left hinge to prevent interference.



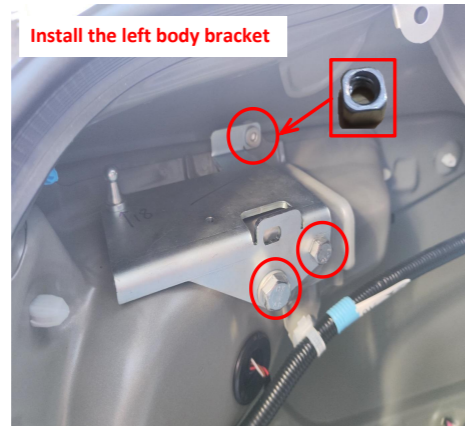
7. Fold the rear seat.



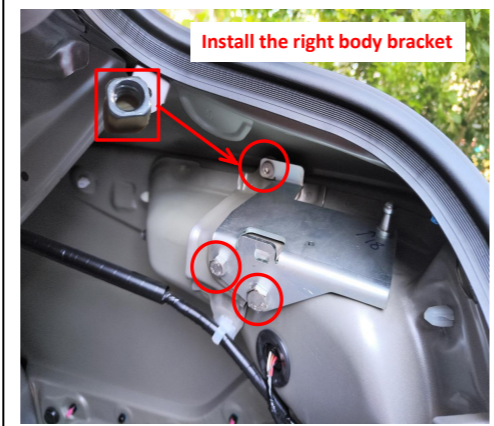
8. Remove the left and right springs from the trunk.



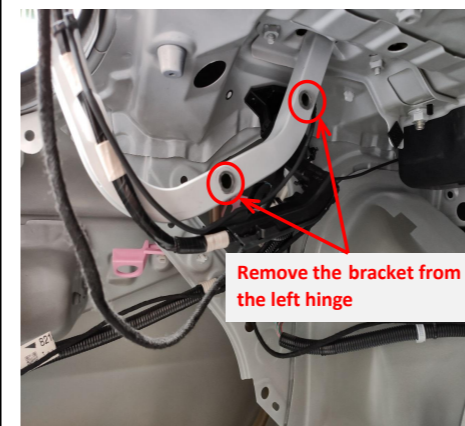
9. Remove the gaskets from the left and right spring holes.



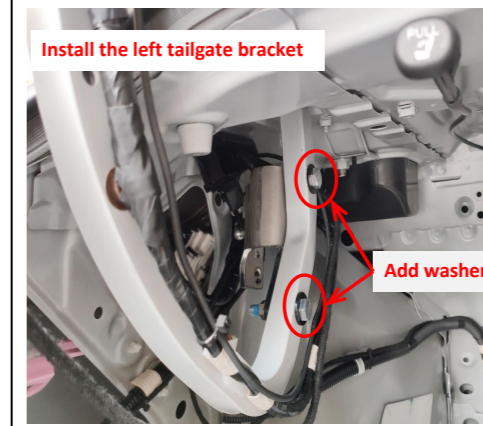
10. Install the left body bracket.



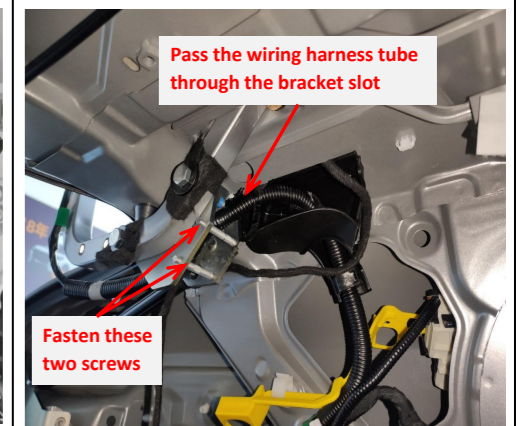
11. Install the right body bracket.



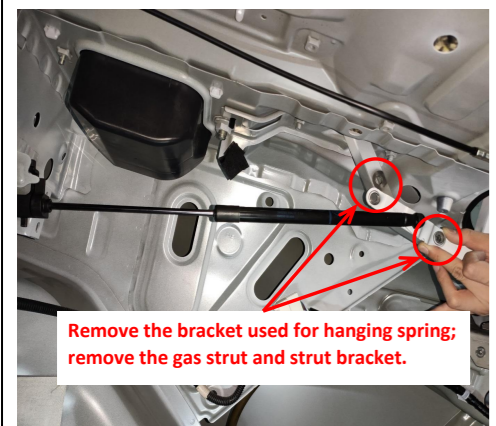
12. Remove the bracket from the left hinge.



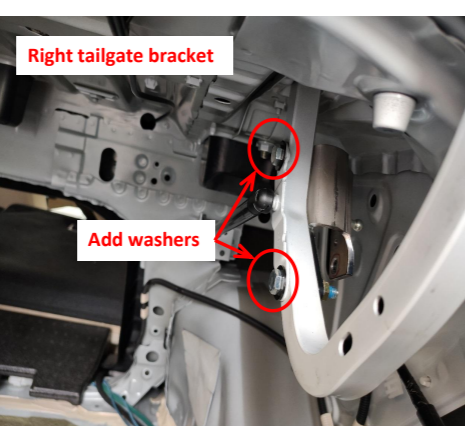
13. Install the left tailgate bracket.



14. Pass the wiring harness tube through the bracket slot and fasten the two screws tightly.



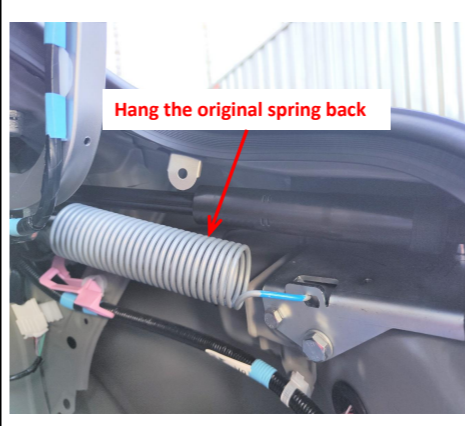
15. Remove the right spring bracket, gas strut and strut bracket.



16. Install the right tailgate bracket and install the original gas strut back.



17. Install the electric struts, L on the left and R on the right (the first letter of the strut code), making sure the ends with wiring harnesses are on the car body.



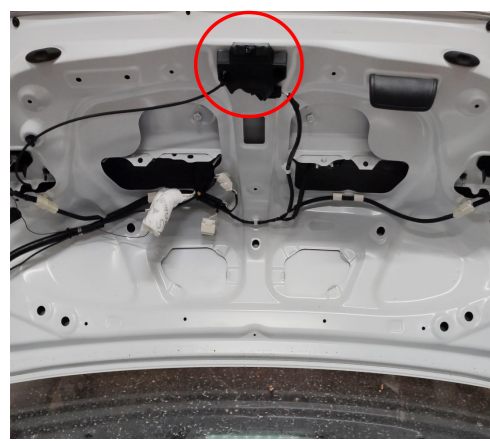
18. Hang the left and right springs back.(wrap the two end of the springs with velvet fabric to prevent abnormal sound during operation)



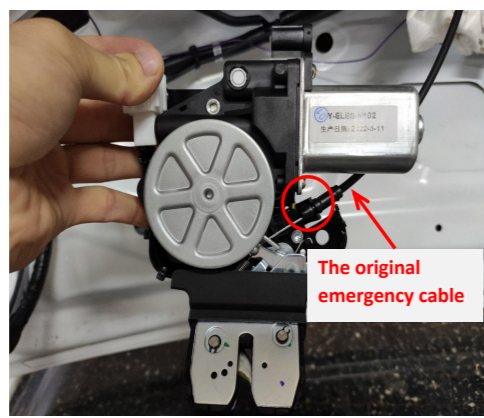
19. Route the left strut wiring harness along with original wires.



20. Route the right strut wiring harness along with original wires.



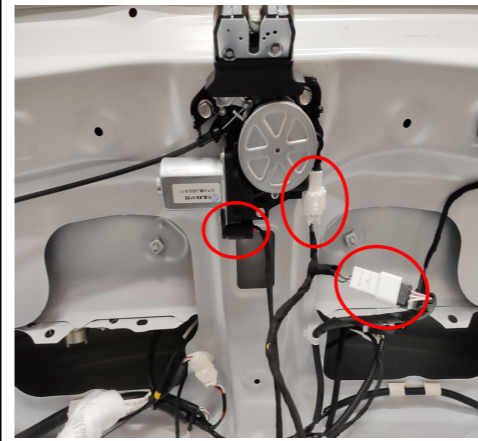
21. Remove the original latch and the lock cable.



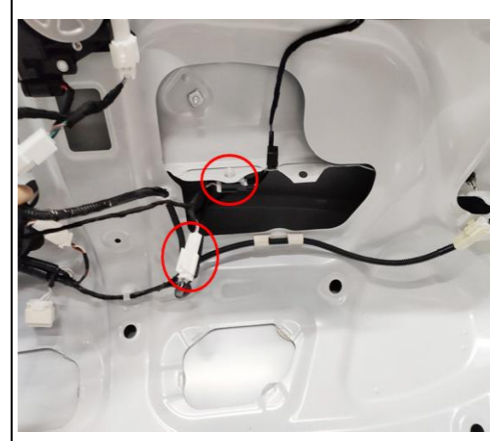
22. Install the original emergency cable at the inner side of the Power latch.



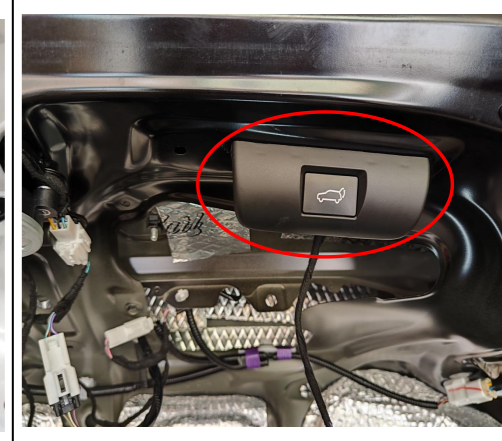
23. Install the power latch and manually adjust the latch to the locked state.



24. Connect the plugs of the lock signal harness to the plugs of the power latch.



25. Connect the plugs of the lock signal harness to the original tailgate switch.



26. Install the added tailgate switch with original screws.



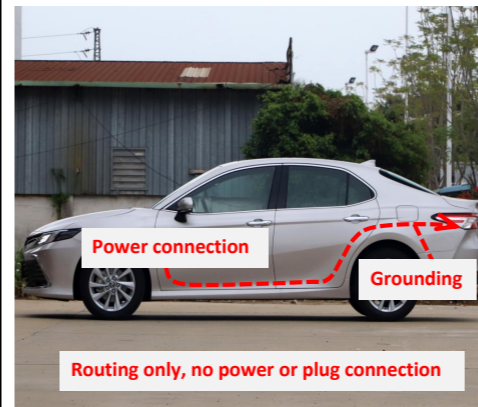
27. Route the two emergency wires of the latch as indicated above, wrap them together with the electric tape and then hide them under the rear left trim panel.



28. Route the lock signal harness to the tailgate along with original wires as indicated.



29. Route the lock signal harness to the indicated position along with original wires.



30. Route the power harness (routing only, no power or plug connection).



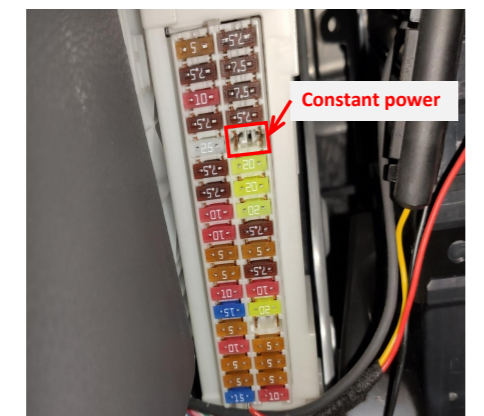
31. Route the power harness along with original wires as indicated.



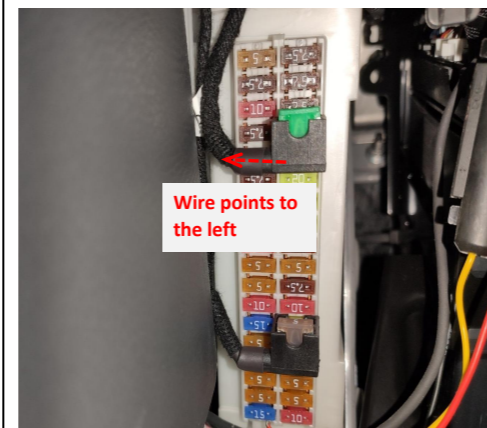
32. Ground at the indicated position on the left side of the trunk.

Check if all plugs are properly connected; Unlock the latch with the original emergency key to check whether the power latch can be unlock normally and whether the emergency cable is properly installed.

33. Check all the plugs.



34. The fuse box is located at the left side of the pedals and the fuse slot for power supply is indicated above.



35. Plug the fuse tap into the fuse box and pay attention to the direction.



36. Insert the strut wiring harnesses ①②, lock signal harness ③, and power harness ④ into the ECU in sequence, mount the ECU onto its bracket.



37. Secure the ECU at the indicated position.

1. Adjust the lock latch to the locked state manually;
2. Manually close the tailgate to the position where the latch touches the lock striker;
3. Press the original tailgate switch to open the tailgate and check whether the tailgate can be opened normally and the tailgate latch can be unlocked normally;
4. Confirm that the power latch and the electric struts are working properly before continuing to install.

38. Confirm that the power latch and the electric struts are working properly.



39. Check if the tailgate can be closed properly. If not, replace the striker with the provided one.



40. Test each function of the electric tailgate and reinstall all the trim panels.

- 5. System initialization method**
1. Press the added tailgate switch button, and the tailgate will close automatically;
 2. Press the tailgate switch button outside the tailgate to open the tailgate and it will make a long sound of "beep".
 3. The system initialization is complete.
- 6. Instructions for the electric tailgate**
1. Methods to open and close the tailgate:
 - Press and hold the tailgate button on the remote key;
 - Press and hold tailgate button at the driver's area;
 - Press the original tailgate switch button;
 - Press the added tailgate switch button.
 2. Method to pause the tailgate:

During the operation of the tailgate, press the button with any of the above methods, and the tailgate will be paused. Press again, and the tailgate will move in reverse.

- 3. Instructions for the added tailgate switch**
- ① Closing speed acceleration (5 Settings)
 1. Press and hold the switch button until hearing the first short beep sound
 2. After releasing the button, you will hear a short beep, indicating that the closing speed acceleration has taken effect.
 3. Repeat this step once to increase by one setting.
 - ② Opening speed acceleration (5 Settings)
 1. Press and hold the switch button until hearing the second short beep sound
 2. After releasing the button, you will hear two short beeps, indicating that the opening speed acceleration has taken effect.
 3. Repeat this step once to increase by one setting.
 - ③ Settings of the voice module
 1. Press and hold the switch button until hearing the third short beep sound.
 2. After releasing the button, you will hear three short beeps, indicating that the voice module has entered configuration mode. (For details, see the voice module operation manual)
 - ④ Block the voice module
 1. Press and hold the added switch button until hearing the fourth beep sound.

2. After releasing the button, you will hear three four beeps indicating that the voice module has been blocked.
- ⑤ Height setting
 1. Press and hold the switch button until hearing the fifth short beep sound.
 2. After releasing the button, you will hear a long beep sound indicating that the height setting has taken effect.
- ⑥ Switch between quick/slow press of the unlock button on remote key
 1. Press and hold the added tailgate switch button until hearing the sixth short beep sound.
 2. After releasing the button, you will hear a long beep sound and a short beep sound indicating that the switch between quick press and slow press of the unlock button has taken effect.
- ⑦ Switch between pressing the unlock button twice/three times
 1. Press and hold the switch button until hearing the seventh short beep sound.
 2. After releasing the button, you will hear a long beep sound and two short beeps indicating that the switch between pressing the unlock button twice/three times has taken effect.

- ⑧ Braking force increase (5 Settings)
 1. Press and hold the unlock button until hearing the eighth short beep sound.
 2. After releasing the button, you will hear a long beep sound and three short beeps indicating that the switch between pressing the unlock button twice/three times has taken effect.
- ⑨ Restore to factory settings
 1. Press and hold the unlock button until hearing the ninth short beep sound.
 2. After releasing the button, you will hear a long beep sound and four short beeps indicating that the restoration to the factory setting has taken effect.
4. Meanings of the buzzer sound:
 - "Beep" once: Receiving an open/close or pause signal, the tailgate will immediately open/close or pause;
 - "Beep" twice: The tailgate has been fully opened or closed;
 - "Beep" three times: The resistance during opening or closing the tailgate is too large, and the intelligent anti-pinch has been turned on.