

Installation Manual

Compatible Model	CToyota CHiace 300 High Roof
Year	2019-2022



8-ETTY-5098-00-00

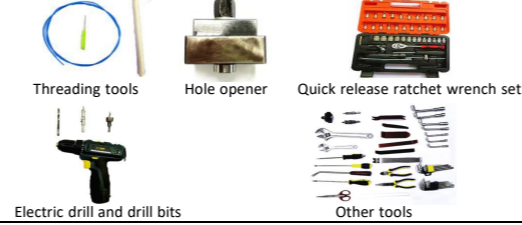
1. Points to note

- For safety and to ensure the proper use of product, please ask a professional technician to install. Do not disassemble and install it privately in case of damaging product and installation accidents.
- Please arrange each wire harness according to the wiring method in this manual. Be sure to tie each wire harness to the vehicle's original wire harness with cable ties. Make sure the wire harnesses are not located at the buckle or screw hole to avoid the wire harnesses crushed by the vehicle interior trim panel buckles and screws during the installation process.
- Because some of the wire harness terminals (as shown in the red ellipse below) are not plugged into the wire harness connectors during manufacture, please insert terminals into the wire harness connector first to avoid short circuit between terminals after the wire harnesses have been arranged, then connect other plugs of the wire harnesses (as shown the blue ellipse below) with the original plugs.



- Check the function display of instrument panel before installation, whether the button of the vehicle is working properly, whether the doors and windows work properly while opening and closing, whether there are scratches on the internal and external surfaces of the vehicle; and report to the customers in a timely manner if there are any problems.
- During the process of disassembly and assembly, do not carry metal ornaments and other hard objects with you to prevent damage to the paintwork, seats and interior. Be sure to place the removed trim components properly to avoid scratching them.
- All the pictures in this manual are for reference only, vehicle models with different configurations may have different pictures, but the installation methods are the same.

2. Installation tools



3. Product list

No.	Name	QTY	Picture
①	Strut	2	
②	ECU	1 set	
③	Wiring harness	1 set	
④	Power latch	1	
⑤	Added tailgate switch	1	
⑥	Other parts (screws, brackets, etc.)	1 set	Omitted



1. Remove the indicated trim panels and step board.



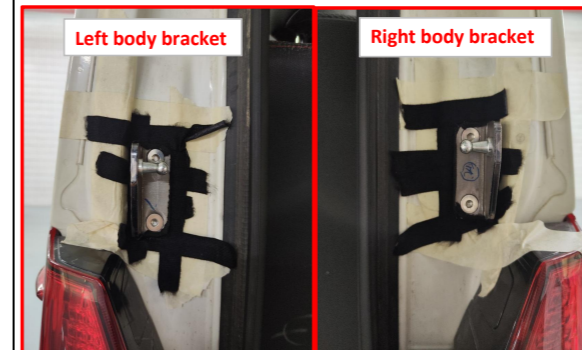
2. Remove the trim panel on the left side of the roof.



3. Remove the tailgate trim panel.



4. Remove the tailgate struts.



5. Replace the left and right body brackets.



6. Replace the left tailgate bracket.



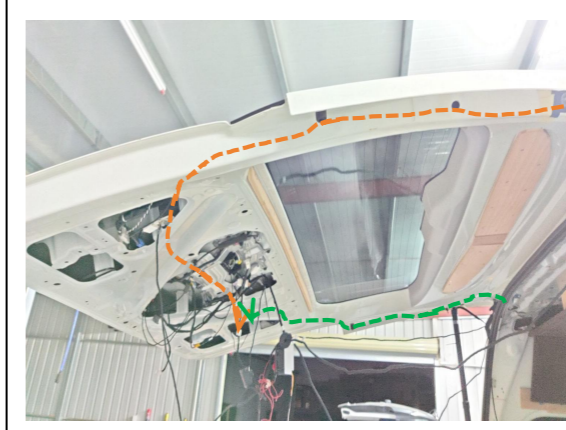
7. Replace the right tailgate bracket.



8. Install the electric struts, L on the left and R on the right (the first letter of the strut code).



9. Drill a hole at the indicated location to allow the strut wiring harness to pass through. Both sides are the same.



10. Route the strut wiring harnesses to the tailgate as indicated.



11. Plug the holes on both sides.



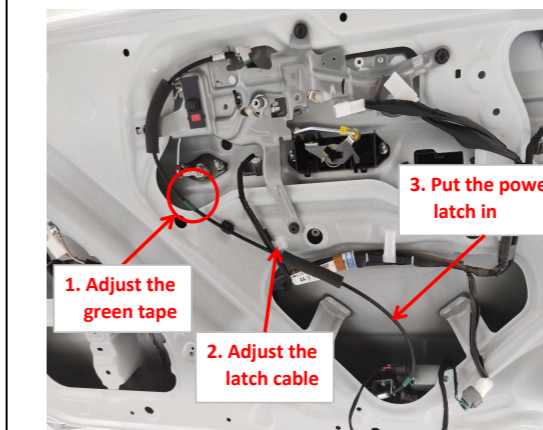
12. Remove the original tailgate latch.



13. Connect the plugs of the lock signal harness to the power latch.



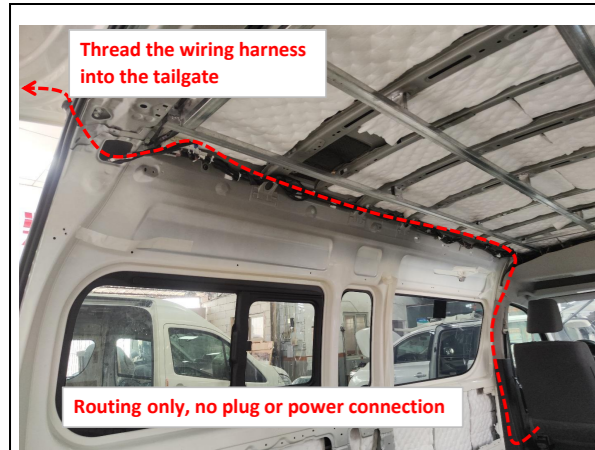
14. Install the latch cable.



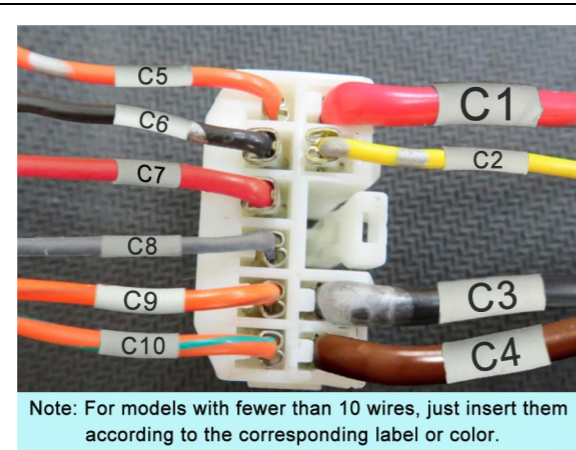
15. Adjust the position of the green tape first, then adjust the latch cable to allow the lock to fit into its location.



16. Secure the power latch.



17. Route the power harness (routing only, no plug or power connection).



18. Insert the power harness terminals into the wire harness connector as shown above.
Note: For models with fewer than 10 wires, just insert them according to the corresponding label or color.



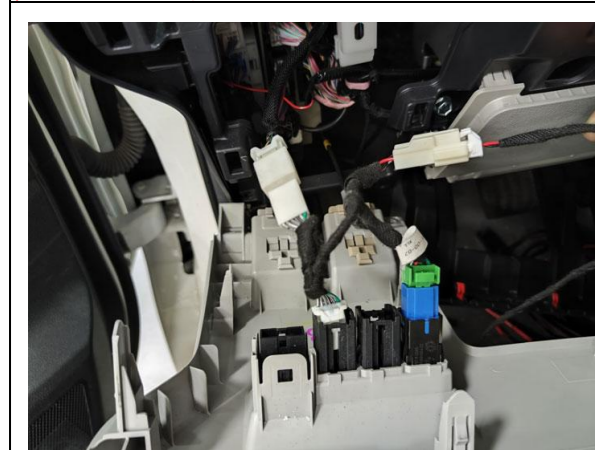
19. Ground at the indicated location on the right side of the tailgate.



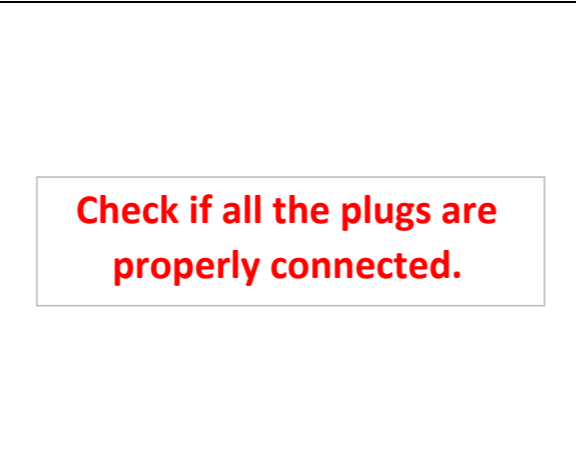
20. Connect the plug of the power harness to the signal plugs at the tailgate.



21. Install the added front switch at the indicated location.



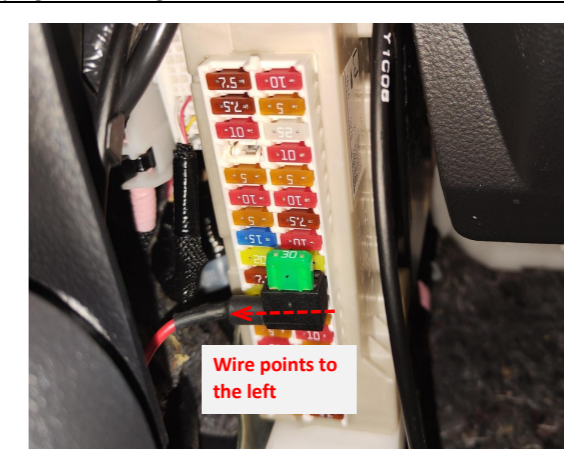
22. Connect the plugs of power harness to the front switch and the plugs of the switch beside it for backlight.



23. Check all the plugs.



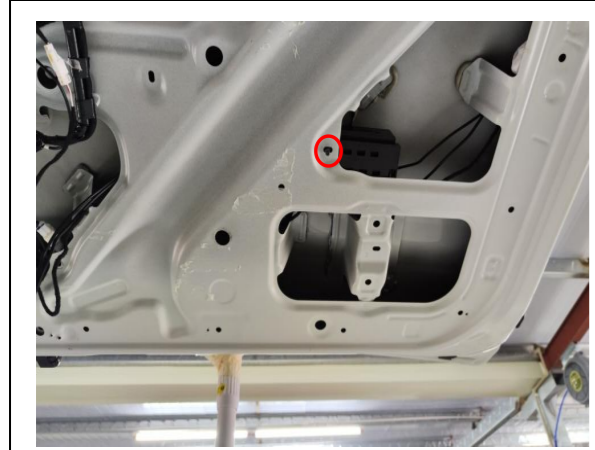
24. The fuse box is located at the driver's position and the fuse slot for power supply is indicated above.



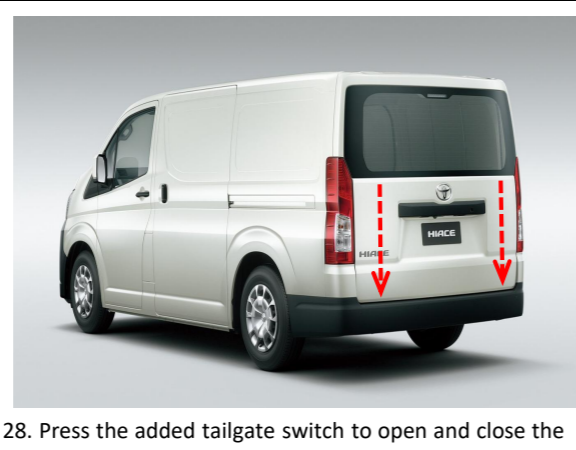
25. Plug the fuse tap into the slot and pay attention to the direction.



26. Insert the strut wiring harnesses ① ②, lock signal harness ③, and power harness ④ into the ECU in sequence.



27. Secure the ECU at the indicated hole on the left side of the tailgate with a nut.



28. Press the added tailgate switch to open and close the tailgate once, the system completes initialization, and then test the functions of the electric tailgate.



29. Drill a hole at the indicated location with a Φ14mm drill bit.



30. Install the hole opener and turn the nut to open the hole.



31. Reinstall all the trim panels and install the added tailgate switch.

5. System initialization method

1. Press the added tailgate switch button to make the tailgate close automatically;
2. Press the switch button outside the tailgate to open the tailgate and it will make a long sound of "beep".
3. The system initialization is complete.

6. Instructions for the electric tailgate

1. Methods to open and close the tailgate:
 - Press the unlock button on the remote key 3 times;
 - Press the added front switch button: press and hold for 4s to open and press once to close.
 - Press the original tailgate switch button;
 - Press the added tailgate switch button to close.

2. Method to pause the tailgate:
During the operation of the tailgate, press the button with any of the above methods, and the tailgate will be paused. Press again, and the tailgate will move in reverse.
3. Method to memorize the height:
Open the tailgate to the height you want to set, long press the added tailgate switch, and release the switch after hearing a long "beep ----". The height memory is complete.
Tip: During the operation of the tailgate, pause the tailgate, and then push the tailgate to the ideal height with your hand.
4. Meanings of the buzzer sound:
"Beep" once: Receiving an open/close or pause signal, the tailgate will immediately open/close or pause;
"Beep" twice: The tailgate has been fully opened or closed;
"Beep" three times: The resistance during opening or closing the tailgate is too large, and the intelligent anti-pinch has been turned on;
Long sound of "beep": The height memory is complete.