

Installation Manual

Compatible Model	CHonda COdysey (RHD)
Year	2015-2021



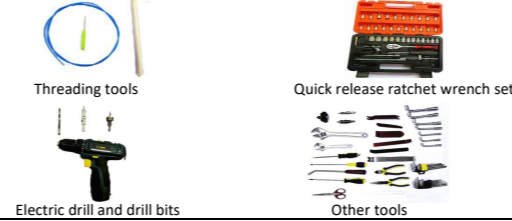
1. Points to note

- For safety and to ensure the proper use of product, please ask a professional technician to install. Do not disassemble and install it privately in case of damaging product and installation accidents.
- Please arrange each wiring harness according to the wiring method in this manual, be sure to tie each wiring harness to the vehicle's original wiring harness with cable ties. Make sure the wiring harnesses are not located at the fasteners or screw holes to avoid the wiring harnesses crushed by the vehicle interior trim panel buckles and screws during the installation process.
- Because some of the wiring harness terminals (as shown in the red ellipses below) are not inserted into the wiring harness connectors during manufacture, please insert terminals into the wiring harness connector first to avoid short circuit between terminals after the wiring harnesses have been arranged, then connect other plugs of the wiring harnesses (as shown in the blue ellipses below) with the original plugs.



- Check the function display of instrument panel before installation, whether the button of the vehicle is working properly, whether the doors and windows work properly while opening and closing, whether there are scratches on the internal and external surfaces of the vehicle; and report to the customers in a timely manner if there are any problems.
- During the process of disassembly and assembly, do not carry metal ornaments and other hard objects with you to prevent damage to the paintwork, seats and interior. Be sure to place the removed trim components properly to avoid scratching them.
- All the pictures in this manual are for reference only, vehicle models with different configurations may have different pictures, but the installation methods are the same.

2. Installation tools



3. Product list

No.	Name	QTY	Picture
①	Strut	2	
②	ECU	1 set	
③	Wiring harness	1 set	
④	Power latch	1	
⑤	Added tailgate switch	1	
⑥	Other parts (screws, brackets, etc.)	1 set	Omitted



1. Remove the front right side trim panel and door sill panel.



2. Remove the rear right side door sill panel and B-pillar trim panel.



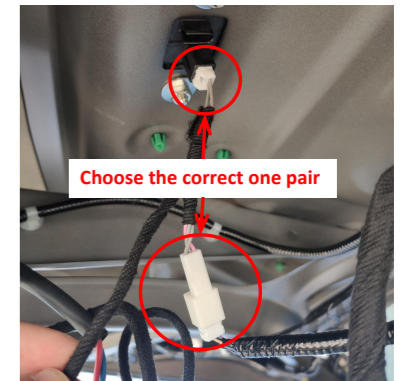
3. Remove the tailgate trim panels.



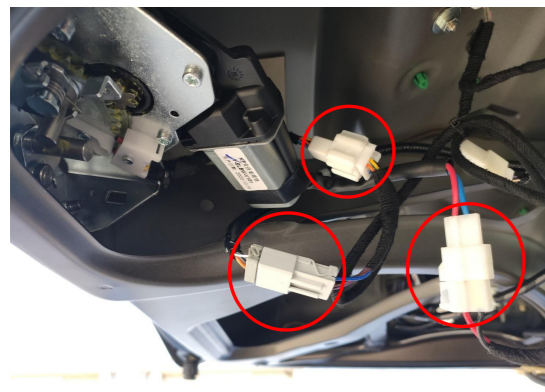
4. Remove the trim panel from the left side of the trunk to allow wiring harnesses to pass through.



5. Remove the original latch and install our power latch.



6. Connect the plugs of the lock signal harness to the plugs of tailgate handle switch (Due to configuration differences, two pairs of plugs have been reserved. Choose the correct one pair for connection).



7. Connect the plugs of the lock signal harness to the plugs of the power latch.



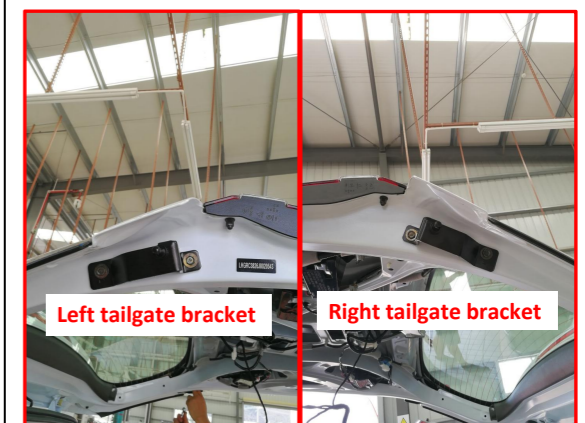
8. Connect the plug of the lock signal harness to the added tailgate switch



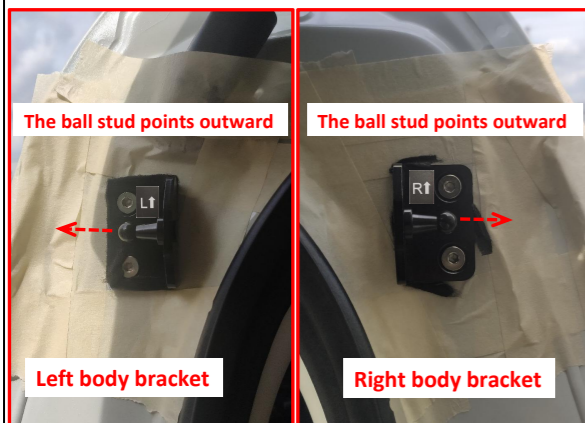
9. Remove the gas struts.



10. Remove the tailgate bracket and drill a hole at its position with a $\phi 21$ drill bit. Both sides are the same.



11. Replace the left and right tailgate brackets.



12. Replace the left and right body brackets.



13. Install the electric struts, L on the left and R on the right (the first letter of the strut code).



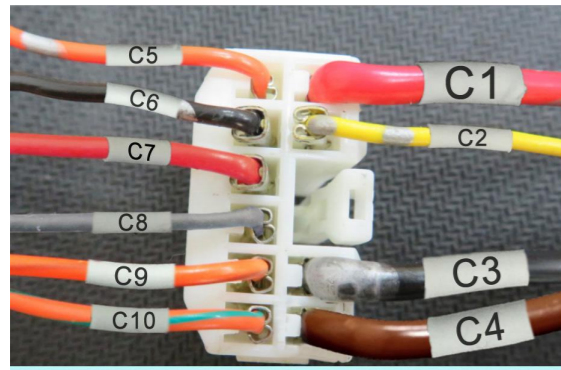
14. Route the strut wiring harnesses.



15. Plug the left and right holes with hole plugs.

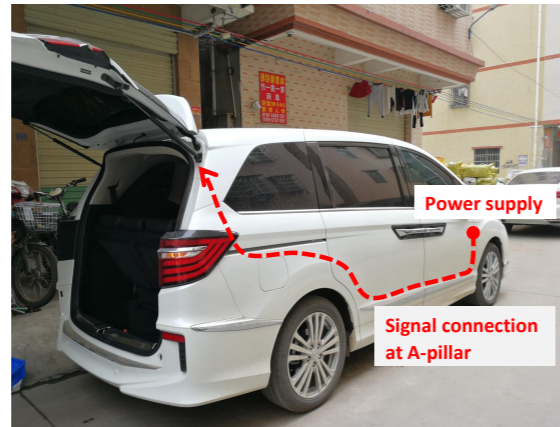


16. Route the power harness to the tailgate.



Note: For models with fewer than 10 wires, just insert them according to the corresponding label or color.

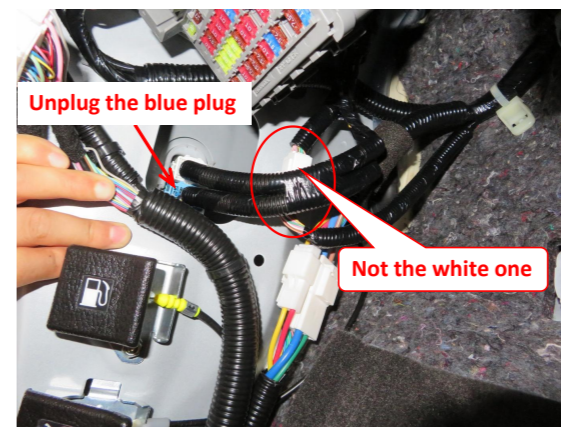
17. Insert the power harness terminals into the wiring harness connector.



18. Route the power harness.



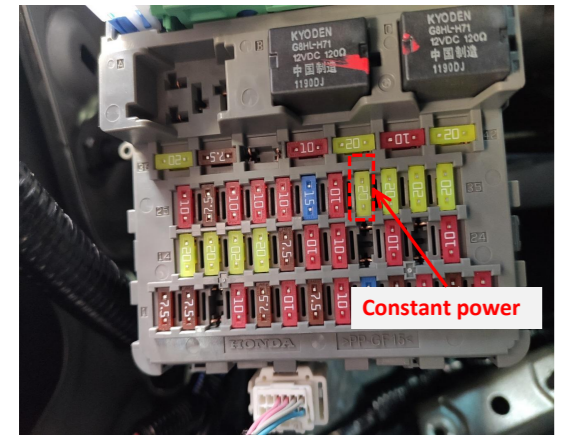
19. Ground at the left side of the trunk.



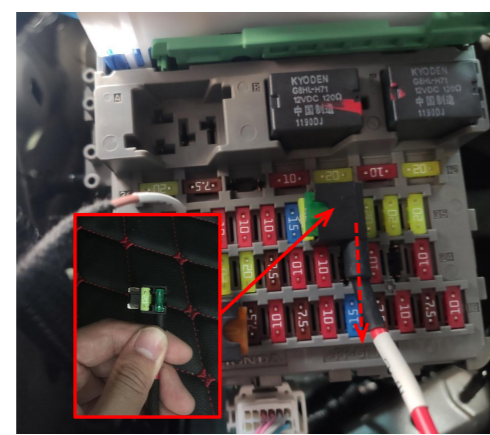
20. Connect the plugs of the power harness with the indicated blue plug and its socket inside of the A-pillar.



21. Install the added front switch and connect the plugs for backlight (due to configuration differences, two pairs of plugs have been reserved. Choose the correct one pair for connection and pay attention to avoid the plug of multifunction combination button).



22. The location of the constant power slot (eighth in the second row).



23. Move the original fuse from the fuse box to the fuse tap and then plug the fuse tap into fuse box for power supply.



24. Use a φ6mm drill bit to drill a mounting hole at the indicated position for the ECU.



25. Insert the strut wiring harnesses ①②, lock signal harness ③, and power harness ④ into the ECU in sequence.



26. Press the added tailgate switch button to close the tailgate and test each function of the electric tailgate.



27. Reinstall all the trim panels and install the added tailgate switch.

5. System initialization method
 1. Press the added tailgate switch button to make the tailgate close automatically;
 2. Press the switch button outside the tailgate to open the tailgate and it will make a long sound of "beep".
 3. The system initialization is complete.

6. Instructions for the electric tailgate
 1. Methods to open and close the tailgate:
 ● Press the unlock button on the remote key 3 times;
 ● Press the unlock button at the driver's area 3 times;
 ● Press the tailgate handle switch button;
 ● Press the added tailgate switch button;
 ● Press the added front switch button: press and hold for 4s to open and press once to close.

2. Method to pause the tailgate:
 During the operation of the tailgate, press the button with any of the above methods, and the tailgate will be paused. Press again, and the tailgate will move in reverse.

3. Method to memorize the height:
 Open the tailgate to the height you want to set, long press the added tailgate switch, and release the switch after hearing a long "beep ----". The height memory is complete.
 Tip: During the operation of the tailgate, pause the tailgate, and then push the tailgate to the ideal height with your hand.

4. Meanings of the buzzer sound:
 "Beep" once: Receiving an open/close or pause signal, the tailgate will immediately open/close or pause;
 "Beep" twice: The tailgate has been fully opened or closed;
 "Beep" three times: The resistance during opening or closing the tailgate is too large, and the intelligent anti-pinch has been turned on;
 Long sound of "beep": The height memory is complete.