

Installation Manual

Compatible Model	CGAC CGS8/CGS8S/CGS7
Year	2017-2021



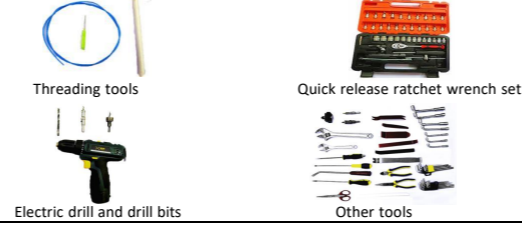
1. Points to note

- For safety and to ensure the proper use of product, please ask a professional technician to install. Do not disassemble and install it privately in case of damaging product and installation accidents.
- Please arrange each wiring harness according to the wiring method in this manual, be sure to tie each wiring harness to the vehicle's original wiring harness with cable ties. Make sure the wiring harnesses are not located at the fasteners or screw holes to avoid the wiring harnesses crushed by the vehicle interior trim panel buckles and screws during the installation process.
- Because some of the wiring harness terminals (as shown in the red ellipses below) are not inserted into the wiring harness connectors during manufacture, please insert terminals into the wiring harness connector first to avoid short circuit between terminals after the wiring harnesses have been arranged, then connect other plugs of the wiring harnesses (as shown in the blue ellipses below) with the original plugs.



- Check the function display of instrument panel before installation, whether the button of the vehicle is working properly, whether the doors and windows work properly while opening and closing, whether there are scratches on the internal and external surfaces of the vehicle; and report to the customers in a timely manner if there are any problems.
- During the process of disassembly and assembly, do not carry metal ornaments and other hard objects with you to prevent damage to the paintwork, seats and interior. Be sure to place the removed trim components properly to avoid scratching them.
- All the pictures in this manual are for reference only, vehicle models with different configurations may have different pictures, but the installation methods are the same.

2. Installation tools



3. Product list

No.	Name	QTY	Picture
①	Strut	2	
②	ECU	1 set	
③	Wiring harness	1 set	
④	Power latch	1	
⑤	Added tailgate switch	1	
⑥	Other parts (screws, brackets, etc.)	1 set	Omitted



1. Remove the indicated driver's side trim panels.



2. Remove the rear left door sill panel and B-pillar trim panel.



3. Remove the tailgate trim panels (there are screws in the circles).



4. Take out the trunk floor mat and remove the indicated trim panel.



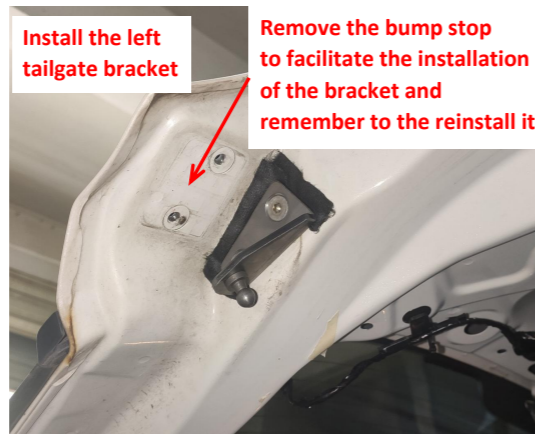
5. Remove the original gas struts.



6. Install the left body bracket.



7. Install the right body bracket.



8. Install the left tailgate bracket.



9. Install the right tailgate bracket.



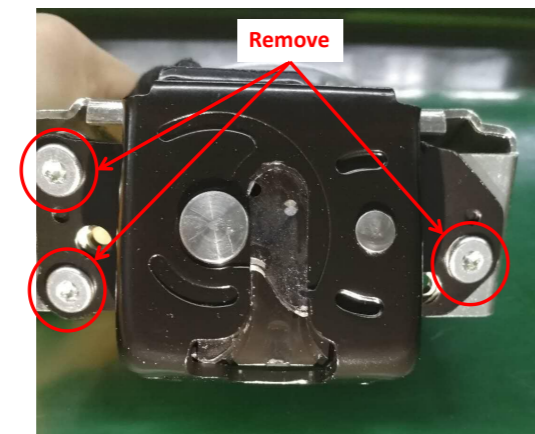
10. Install the electric struts.



11. Thread the strut wiring harness through the indicated hole, the same on both sides.



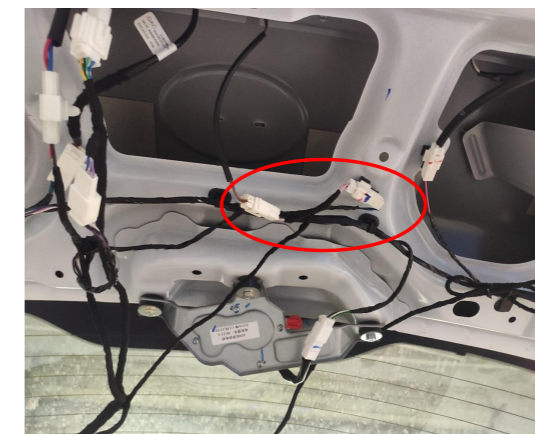
12. Route the left and right strut wiring harness to the tailgate as indicated.



13. Remove the screws from the power latch.



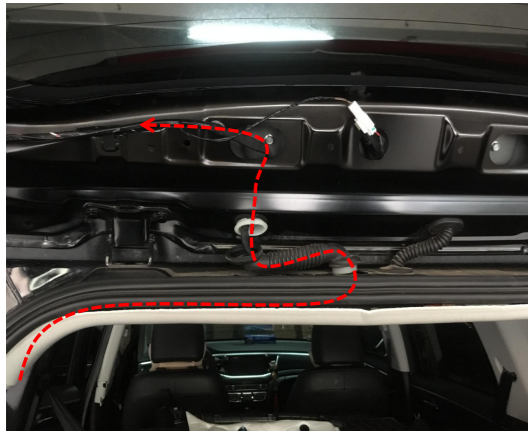
14. Remove the original latch and install our power latch.



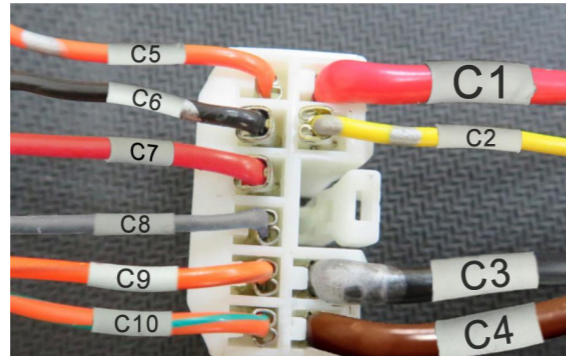
15. Connect the plugs of the lock signal harness to the plugs of original tailgate switch.



16. Connect the plugs of the lock signal harness to the plugs of the power latch and the added tailgate switch.

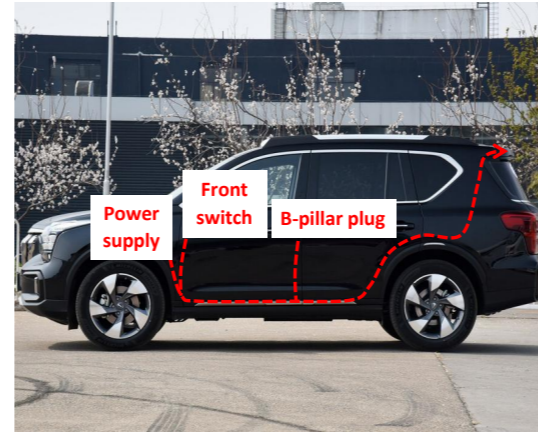


17. Thread the power harness to the tailgate (do not connect plugs before inserting terminals into wire harness connector).



Note: For models with fewer than 10 wires, just insert them according to the corresponding label or color.

18. Insert the power harness terminals into the connector according to the diagram.



19. Route the power harness as indicated.



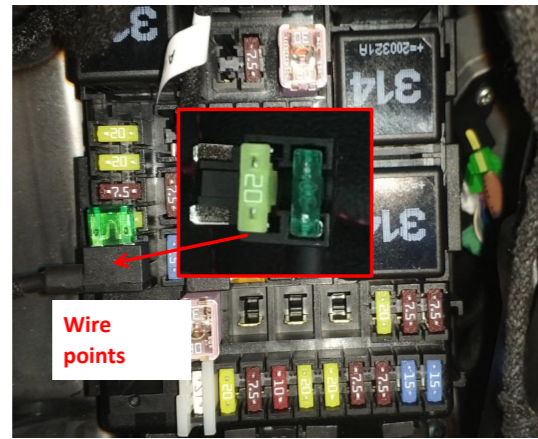
20. Ground at the indicated position on the right side of the tailgate.



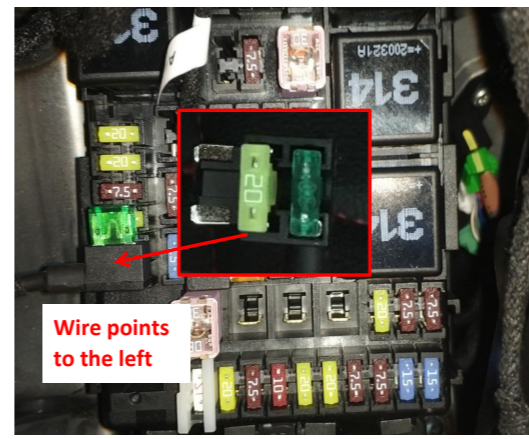
21. (For models that have the reserved place for the front switch) Remove the switch assembly, install the added front switch, connect the plugs and reinstall the switch assembly.



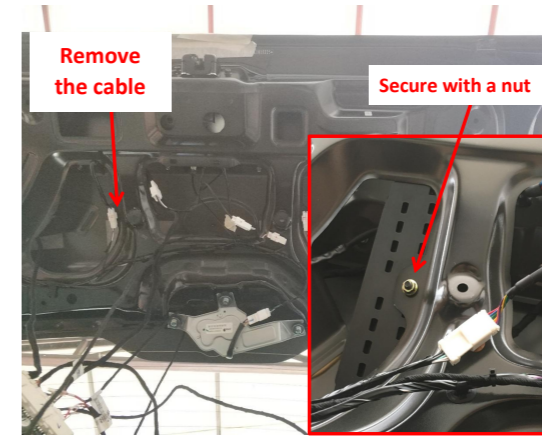
22. (For models that have no reserved place for the front switch, such as GS7) connect the plugs of the power harness to the B-pillar plugs.



23. The fuse slot for power supply is indicated above.



24. Move the fuse from the fuse box to the fuse tap, plug the fuse tap into the fuse box and pay attention to the



25. Remove the cable clip and secure the ECU at the indicated position.



26. Insert the left and right strut wiring harnesses ①②, lock signal harness ③, and power harness ④ into the ECU in sequence.



27. Press the added tailgate switch to close the tailgate once, the system completes initialization, and then test each function of the electric tailgate.



28. Install the added tailgate switch and reinstall all the trim panels.

5. System initialization method

1. Press the added tailgate switch button to make the tailgate close automatically;
2. Press the switch button outside the tailgate to open the tailgate and it will make a long sound of "beep".
3. The system initialization is complete.

6. Instructions for the electric tailgate

1. Methods to open and close the tailgate:
 - Press and hold the tailgate button on the remote key;
 - Press the added front switch button: press and hold for 4s to open and press once to close;
 - Press the unlock button at the driver's area 3 times (for models without front switch);
 - Press the original tailgate switch button;
 - Press the added tailgate switch button.

2. Method to pause the tailgate:

During the operation of the tailgate, press the button with any of the above methods, and the tailgate will be paused. Press again, and the tailgate will move in reverse.

3. Method to memorize the height:

Open the tailgate to the height you want to set, long press the added tailgate switch, and release the switch after hearing a long "beep ----". The height memory is complete.
Tip: During the operation of the tailgate, pause the tailgate, and then push the tailgate to the ideal height with your hand.

4. Meanings of the buzzer sound:

"Beep" once: Receiving an open/close or pause signal, the tailgate will immediately open/close or pause;
"Beep" twice: The tailgate has been fully opened or closed;
"Beep" three times: The resistance during opening or closing the tailgate is too large, and the intelligent anti-pinch has been turned on;
Long sound of "beep": The height memory is complete.