

# Installation Manual

Compatible Model	CToyota CCorolla
Year	2019-2022



8-ETTY-5113-00-00

## 1. Points to note

• For safety and to ensure the proper use of product, please ask a professional technician to install. Do not disassemble and install it privately in case of damaging product and installation accidents.

• Please arrange each wiring harness according to the wiring method in this manual, be sure to tie each wiring harness to the vehicle's original wiring harness with cable ties. Make sure the wiring harnesses are not located at the fasteners or screw holes to avoid the wiring harnesses crushed by the vehicle interior trim panel buckles and screws during the installation process.

• Because some of the wiring harness terminals (as indicated by the red ellipses below) are not plugged into the wiring harness connectors during manufacture, please insert terminals into the wiring harness connector first to avoid short circuit between terminals after the wiring harnesses have been arranged, then connect other plugs of the wiring harnesses (as indicated by the blue ellipses below) with the original plugs.

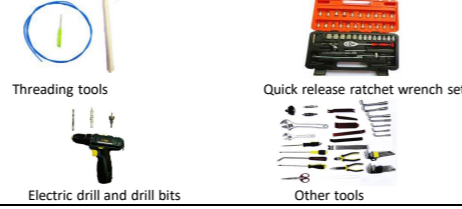


• Check the function display of instrument panel before installation, whether the button of the vehicle is working properly, whether the doors and windows work properly while opening and closing, whether there are scratches on the vehicle internal and exterior surfaces; and report to the customers in a timely manner if there are any problems.

• During the process of disassembly and assembly, do not carry metal ornaments and other hard objects with you to prevent damage to the paintwork, seats and interior. Be sure to place the removed trim components properly to avoid scratching them.

• All the pictures in this manual are for reference only, vehicle models with different configurations may have different pictures, but the installation methods are the same.

## 2. Installation tools



## 3. Product list

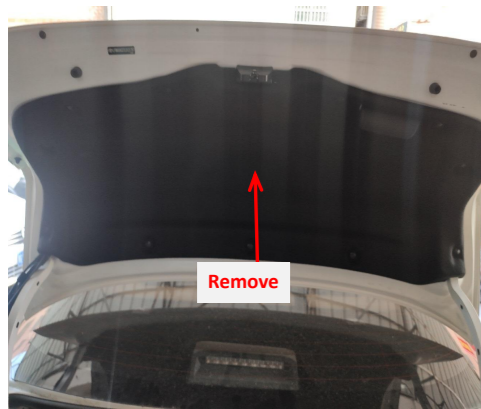
No.	Name	QTY	Picture
①	Strut	2	
②	ECU	1 set	
③	Wiring harness	1 set	
④	Power latch	1	
⑤	Added tailgate switch	1	
⑥	Other parts (screws, brackets, etc.)	1 set	Omitted



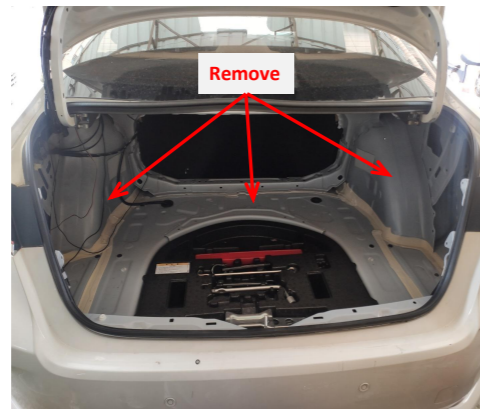
1. Remove the front left door sill panels.



2. Remove the rear left door sill panel and B-pillar trim panel.



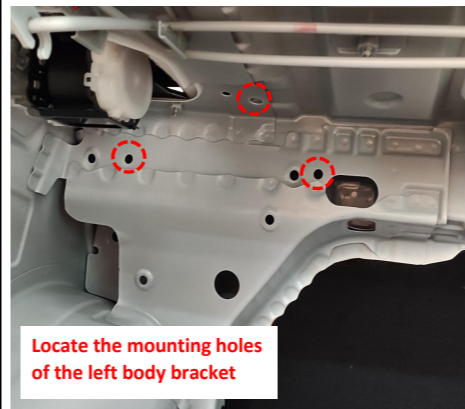
3. Remove the tailgate trim panel.



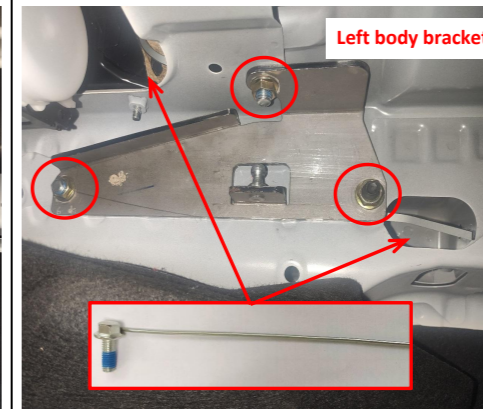
4. Remove the indicated trim panels from the trunk.



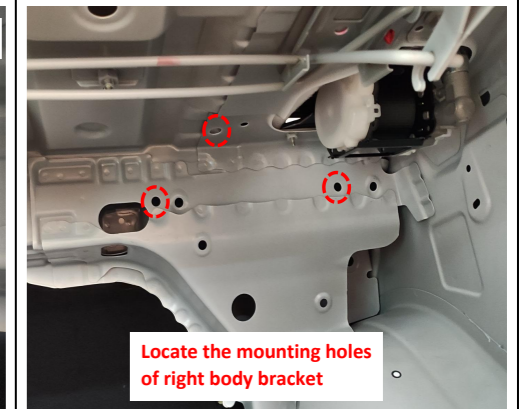
5. Remove the plastic boxes of seat belt on both sides (remember to install them back after finishing the installation).



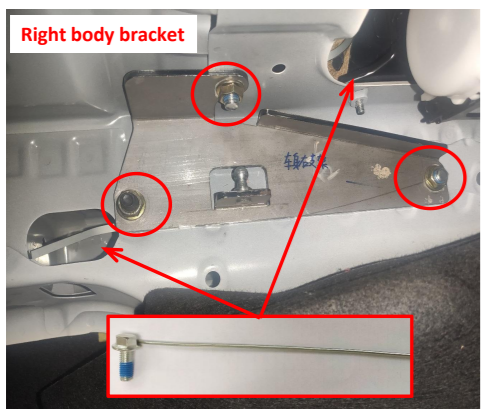
6. Locate the mounting holes of the left body bracket.



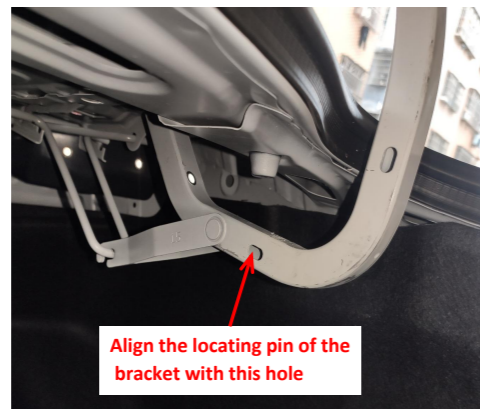
7. Install the left body bracket. Thread the screws with handle through the indicated holes to fasten the bracket.



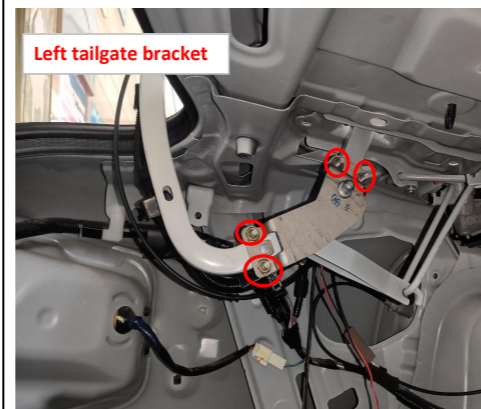
8. Locate the mounting holes of right body bracket.



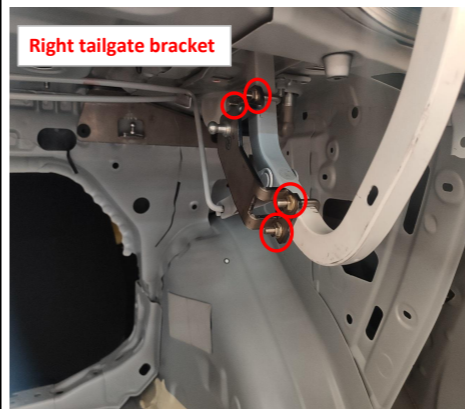
9. Install the right body bracket. Thread the screws with handle through the indicated holes to fasten the bracket.



10. Locate the hole for the tailgate bracket.



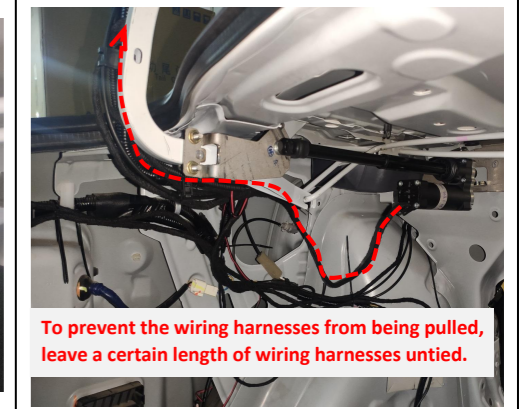
11. Install the left tailgate bracket with two U-bolts fastening the bracket.



12. Install the right tailgate bracket with two U-bolts fastening the bracket.



13. Install the electric struts, L on the left and R on the right (the first letter of the strut code), making sure the ends with wiring harnesses are on the car body.



14. Route the strut wiring harnesses on both sides. To prevent the wiring harnesses from being pulled, leave a certain length of wiring harnesses untied.



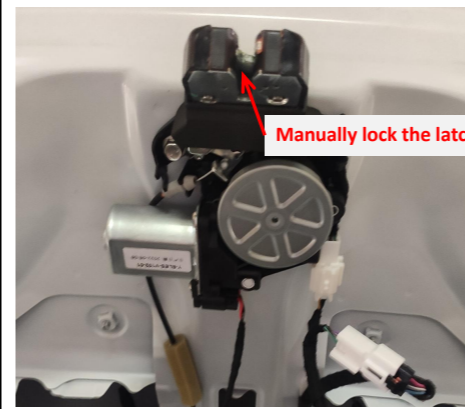
15. Route the strut wiring harnesses to the tailgate along the hinges.



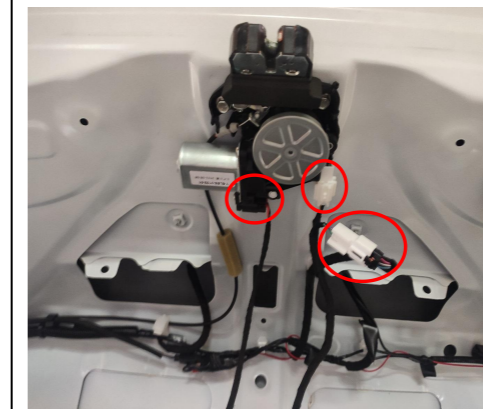
16. Remove the original latch and the emergency lock cable.



17. Install the emergency cable on the power latch (inside fastener).



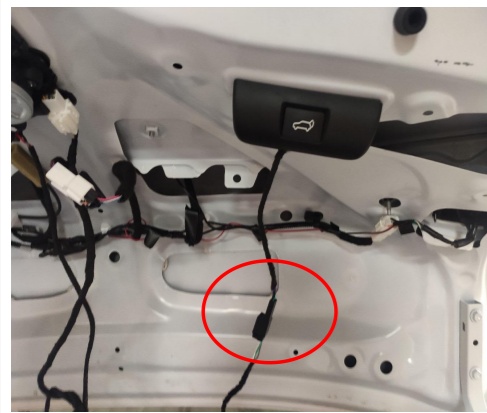
18. Install our power latch and manually adjust the latch to the locked state.



19. Connect the plugs of lock signal harness to the power latch.



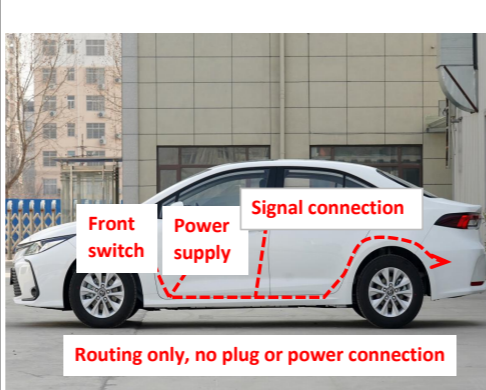
20. Connect the plugs of the lock signal harness to the original tailgate switch.



21. Connect the plug of lock signal harness to the added tailgate switch.



22. Wrap the two emergency wires of lock and hide them under the left side of the rear seat.



23. Route the power harness.



24. Route the power harness from the driver's area to the trunk and then route to the tailgate along the hinge.



25. Ground at the indicated location on the left side of the trunk.



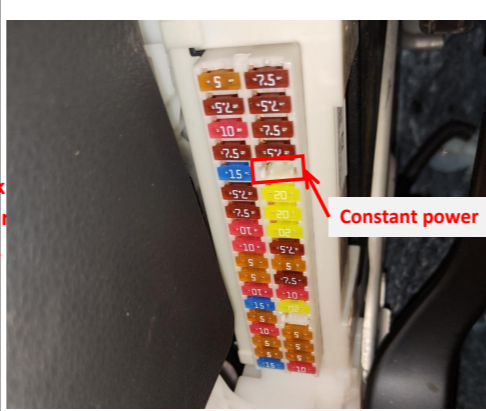
26. Remove the blank button and install the added switch button. Connect the plug to the button beside for backlight.



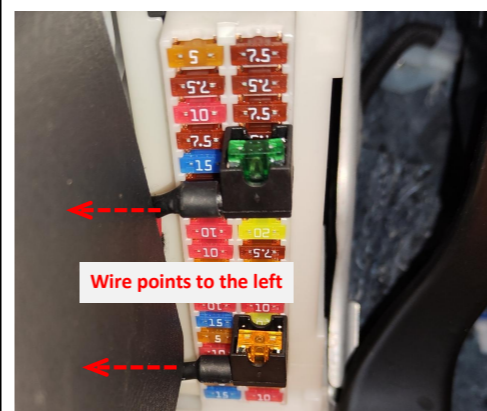
27. Connect the plugs of the power harness to the B-pillar signal plugs at the rear left B-pillar.

Check if all the plugs are well connected ; Check whether the tailgate latch can be unlocked by the front left side door handle and make sure that the emergency cable is properly installed.

28. Check if all the plugs are well connected and the emergency cable functions well.



29. The fuse box is under the steering wheel and the slot for power supply is indicated above.



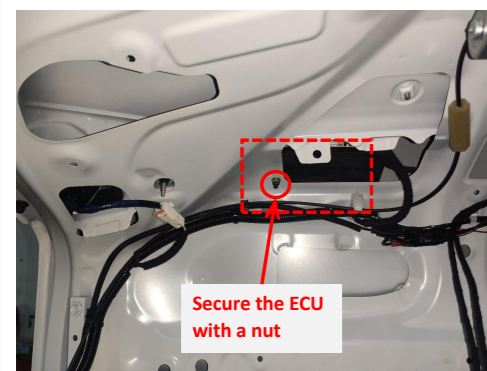
30. Plug the fuse tap into the fuse box and pay attention to the direction.



31. Drill a hole at the indicated location with a  $\phi 6\text{mm}$  drill bit for installing the ECU.



32. Insert the strut wiring harnesses ① ②, lock signal harness ③, and power harness ④ into the ECU in sequence.



33. Install the ECU and secure it with a nut.

1. Adjust the latch to the locked state manually;  
2. Manually close the tailgate to the position where the latch touches the lock striker;  
3. Press the original tailgate switch to open the tailgate and check whether the tailgate can be opened normally and the tailgate latch can be unlocked normally;  
4. Confirm that the power latch and the electric struts are working properly before continuing to install.

34. Confirm that the power latch and the electric struts are working properly.



35. Test each function of the electric tailgate.



36. Apply a little grease to the place where the torsion spring contacts with the body sheet metal to prevent noise during operation.



37. Install the added switch at the reserved place.



38. Reinstall all trim panels and install the added tailgate switch.

5. System initialization method  
1. Press the added tailgate switch button, and the tailgate will close automatically;  
2. Press the tailgate switch button outside the tailgate to open the tailgate and it will make a long sound of "beep".  
3. The system initialization is complete.

6. Instructions for the electric tailgate  
1. Methods to open and close the tailgate:  
● Press and hold the tailgate button on the remote key;  
● Press the added front switch button: press and hold for 4s to open and press once to close;  
● Press the original tailgate switch button;  
● Press the added tailgate switch button to close.

2. Method to pause the tailgate:  
During the operation of the tailgate, press the button with any of the above methods and the tailgate will be paused. Press again, and the tailgate will move in reverse.

3. Method to memorize the height:  
Open the tailgate to the height you want to set, long press the added tailgate switch button, and release the switch after hearing a long of "beep ----". The height memory is complete.  
Tip: During the operation of the tailgate, pause the tailgate, and then push the tailgate to the ideal height with your hand.

4. Meanings of the buzzer sound:  
"Beep" once: Receiving an open/close or pause signal, the tailgate will immediately open/close or pause;  
"Beep" twice: The tailgate has been opened or closed in place;  
"Beep" three times: The resistance during opening or closing the tailgate is too large and the intelligent anti-pinch has been turned on;  
Long sound of "beep": The height memory is complete.