

# Installation Manual

Compatible Model	CLexus CES
Year	2018-2022



8-ETTY-5111-00-00

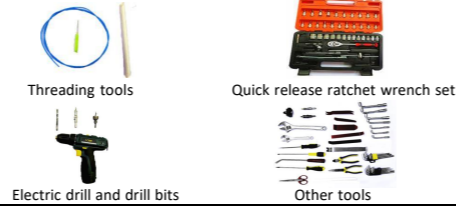
## 1. Points to note

- For safety and to ensure the proper use of product, please ask a professional technician to install. Do not disassemble and install it privately in case of damaging product and installation accidents.
- Please arrange each wiring harness according to the wiring method in this manual, be sure to tie each wiring harness to the vehicle's original wiring harness with cable ties. Make sure the wiring harnesses are not located at the fasteners or screw holes to avoid the wiring harnesses crushed by the vehicle interior trim panel buckles and screws during the installation process.
- Because some of the wiring harness terminals (as indicated by the red ellipses below) are not plugged into the wiring harness connectors during manufacture, please insert terminals into the wiring harness connector first to avoid short circuit between terminals after the wiring harnesses have been arranged, then connect other plugs of the wiring harnesses (as indicated by the blue ellipses below) with the original plugs.



- Check the function display of instrument panel before installation, whether the button of the vehicle is working properly, whether the doors and windows work properly while opening and closing, whether there are scratches on the vehicle internal and exterior surfaces; and report to the customers in a timely manner if there are any problems.
- During the process of disassembly and assembly, do not carry metal ornaments and other hard objects with you to prevent damage to the paintwork, seats and interior. Be sure to place the removed trim components properly to avoid scratching them.
- All the pictures in this manual are for reference only, vehicle models with different configurations may have different pictures, but the installation methods are the same.

## 2. Installation tools



## 3. Product list

No.	Name	QTY	Picture
①	Strut	2	
②	ECU	1 set	
③	Wiring harness	1 set	
④	Power latch	1	
⑤	Added tailgate switch	1	
⑥	Other parts (screws, brackets, etc.)	1 set	Omitted



1. Remove the front left side trim panel and door sill panel.



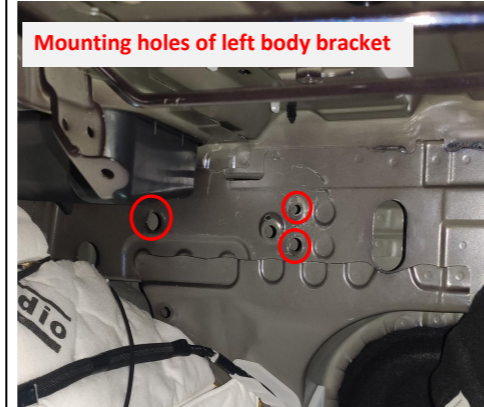
2. Remove the rear left side door sill panel and B-pillar trim panel.



3. Remove the tailgate trim panels.



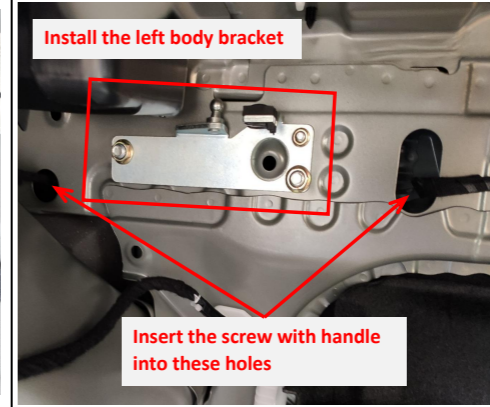
4. Remove the trunk liner and adjust the position of the spring on the left side of the trunk.



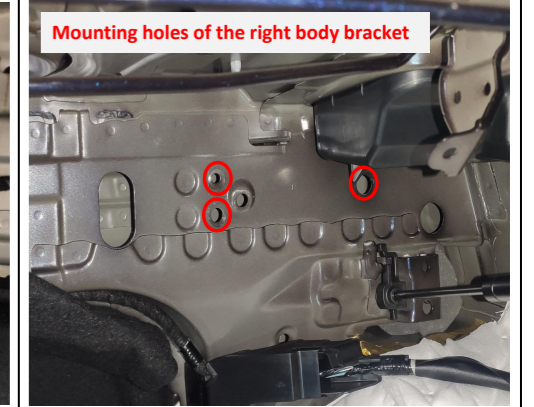
5. Locate the mounting holes of the left body bracket.



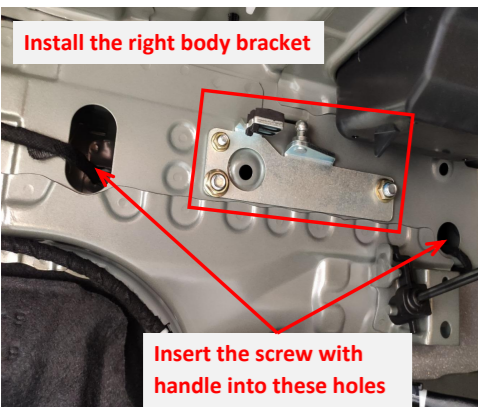
6. Fold the handle of the screw into the shape as shown above for easy insertion into the holes.



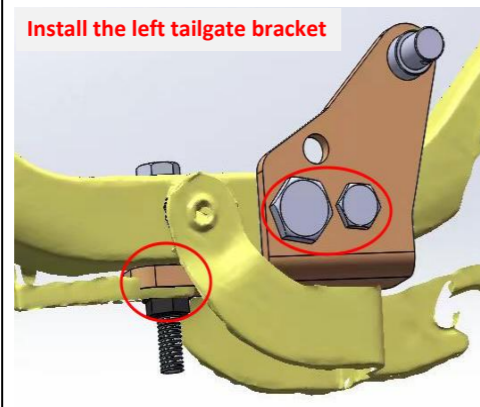
7. Install the left body bracket.



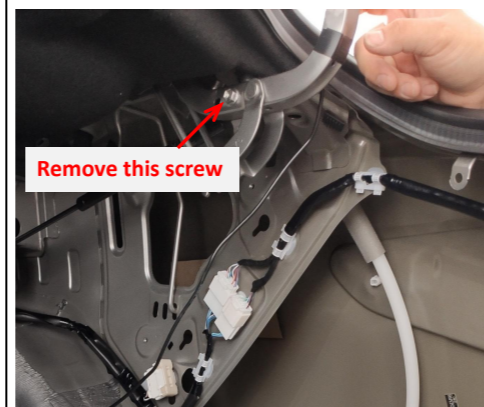
8. Locate the mounting holes of the right body bracket.



9. Install the right body bracket.



10. Install the left tailgate bracket at the left hinge.



11. Remove the indicated screw from the right hinge.



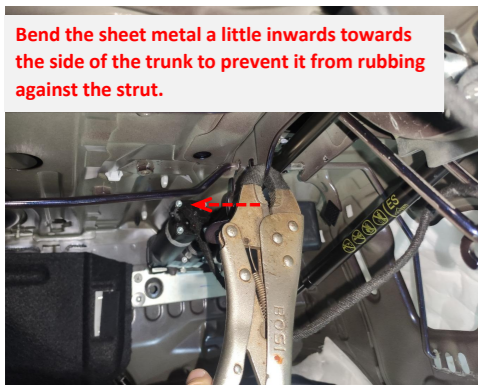
12. Install the right tailgate bracket at the right hinge.



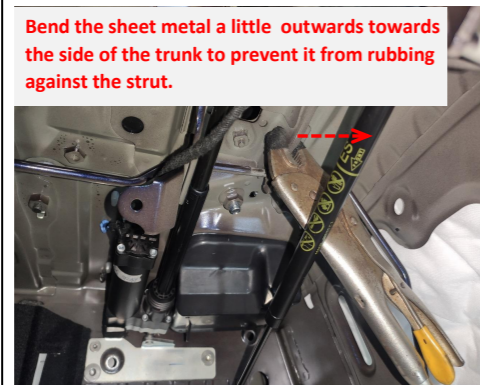
13. Install the electric struts, L on the left and R on the right (the first letter of the strut code), making sure the ends with wiring harnesses are on the car body.



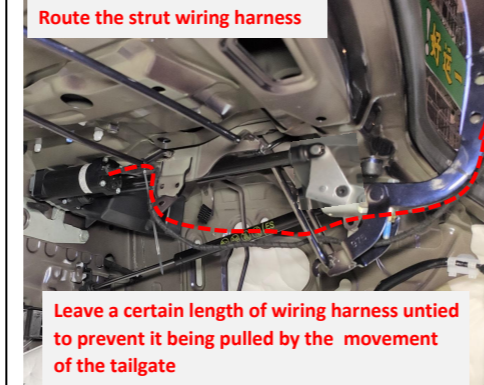
14. Use the circle clip to secure the strut; the same on both struts.



15. Bend the sheet metal a little inwards towards the side of the trunk to prevent it from rubbing against the strut. Both the left and right sides are the same.



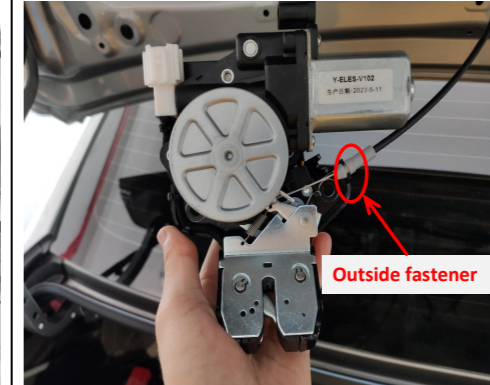
16. Bend the sheet metal a little outwards towards the side of the trunk to prevent it from rubbing against the strut.



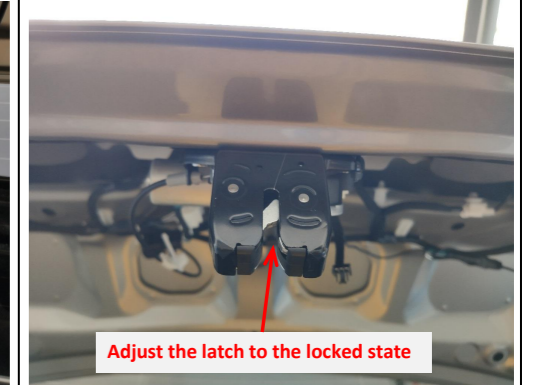
17. Route the strut wiring harnesses along the hinges to the tailgate and tie them along with the original wiring harnesses.



18. Remove the original latch and the emergency cable.

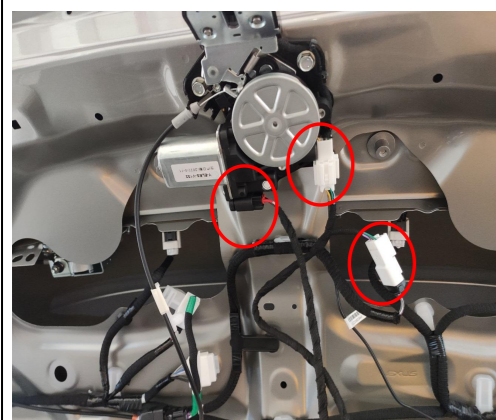


19. Mount the emergency cable onto the indicated fastener of our power latch (remove the fastener of the emergency cable from the tailgate first).



20. Install the power latch and adjust the latch to the locked state by hand to prevent accidental closing during the installation process.





21. Connect the lock signal harness to the plugs of the power latch.



22. Connect the lock signal harness to the plugs of the original tailgate switch.



23. Install the added tailgate switch with the original screws.



24. Wrap the two emergency wires with electric tape and hide them under the rear left side trim panel.



25. Route the power harness as indicated.



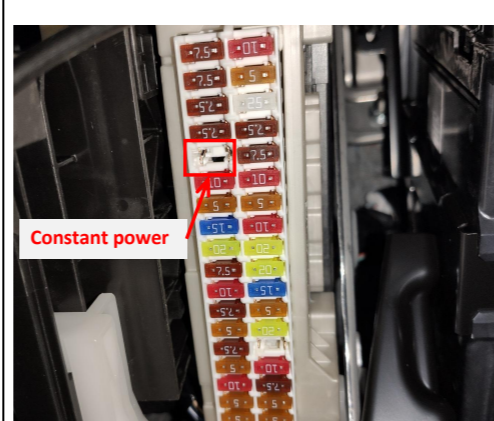
26. Route the power harness to the tailgate.



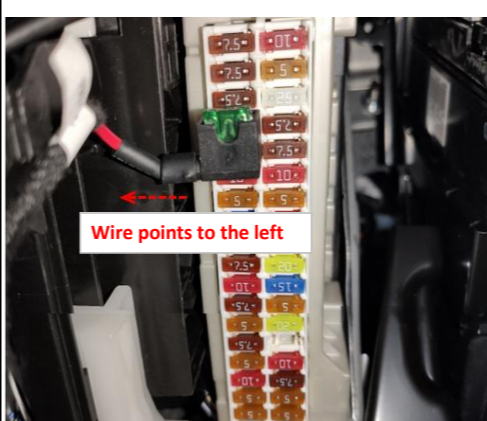
27. Ground at the left side of the trunk.

**Check whether all the plugs are properly connected;**  
**Use the emergency key to unlock the latch, check whether the latch can be unlocked normally;**  
**Check whether the emergency cable has been properly installed.**

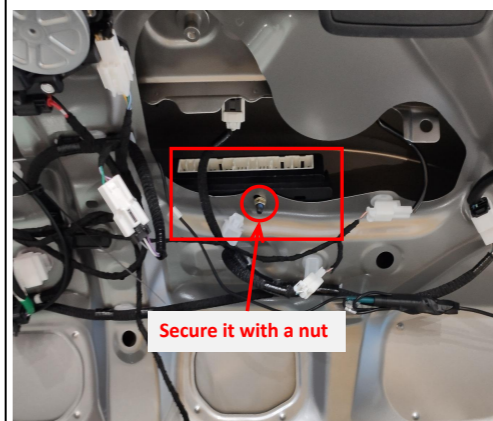
28. Check all the plugs and the emergency cable.



29. The fuse box is located beside the pedals and the fuse slot for power supply is indicated above.



30. Plug the fuse tap into the fuse box with wire pointing to the left.



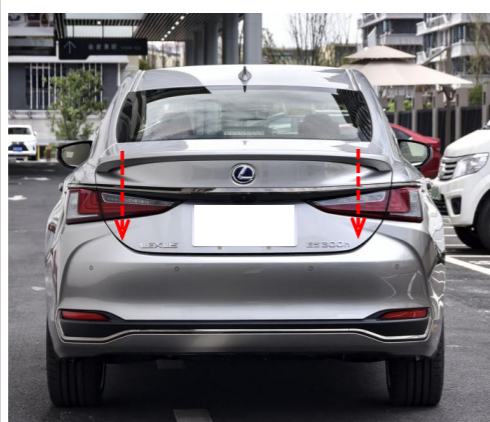
31. Remove the wire clip from the indicated hole, install the ECU at the hole and secure it with a nut.



32. Insert the strut wiring harnesses ①②, lock signal harness ③, and power harness ④ into the ECU in sequence.

**1. Adjust the latch to the locked state manually;**  
**2. Manually close the tailgate to the position where the latch touches the lock striker;**  
**3. Press the original tailgate switch button to open the tailgate and check whether the latch can be opened normally and the latch can be unlocked normally;**  
**4. Confirm that the latch and the electric struts function well before continuing to install.**

33. Check whether the power latch and the electric struts function well.



34. Test each function of the electric tailgate.



35. Reinstall all trim panels.



36. If the door closing sound is too loud, please remove the spring from the dust seal at the striker to prevent it from touching the electric lock by making the dust seal lose its elasticity.

**5. System initialization method**  
1. Press the added tailgate switch button, and the tailgate will close automatically;  
2. Press the tailgate switch button outside the tailgate to open the tailgate and it will make a long sound of "beep".  
3. The system initialization is complete.

**6. Instructions for the electric tailgate**  
●Press and hold the tailgate button on the remote key;  
●Press and hold the tailgate button at the driver's area;  
●Press the original tailgate switch button (for models with key sensing, the key needs to be near the car);  
●Press the added tailgate switch button.

2. Method to pause the tailgate:  
During the operation of the tailgate, press the button with any of the above methods and the tailgate will be paused. Press again, and the tailgate will move in reverse.

3. Method to memorize the height:  
Open the tailgate to the height you want to set, long press the added tailgate switch button, and release the switch after hearing a long of "beep ----". The height memory is complete.  
Tip: During the operation of the tailgate, pause the tailgate, and then push the tailgate to the ideal height with your hand.

4. Meanings of the buzzer sound:  
"Beep" once: Receiving an open/close or pause signal, the tailgate will immediately open/close or pause;  
"Beep" twice: The tailgate has been opened or closed in place;  
"Beep" three times: The resistance during opening or closing the tailgate is too large and the intelligent anti-pinch has been turned on;  
Long sound of "beep": The height memory is complete.