

Installation Manual

Compatible Model	CToyota CGranvia
Year	2022



8-ETTY-5097-00-00

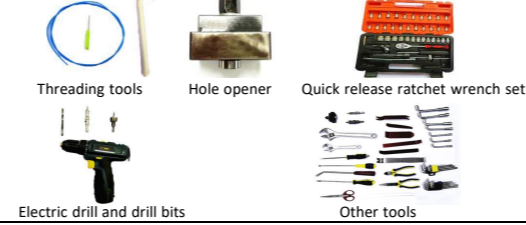
1. Points to note

- For safety and to ensure the proper use of product, please ask a professional technician to install. Do not disassemble and install it privately in case of damaging product and installation accidents.
- Please arrange each wiring harness according to the wiring method in this manual, be sure to tie each wiring harness to the vehicle's original wiring harness with cable ties. Make sure the wiring harnesses are not located at the buckles or screw holes to avoid the wiring harnesses crushed by the vehicle interior trim panel buckles and screws during the installation process.
- Because some of the wiring harness terminals (as shown in the red ellipses below) are not inserted into the wiring harness connectors during manufacture, please insert terminals into the wiring harness connector first to avoid short circuit between terminals after the wiring harnesses have been arranged, then connect other plugs of the wiring harnesses (as shown in the blue ellipses below) with the original plugs.



- Check the function display of instrument panel before installation, whether the button of the vehicle is working properly, whether the doors and windows work properly while opening and closing, whether there are scratches on the internal and external surfaces of the vehicle; and report to the customers in a timely manner if there are any problems.
- During the process of disassembly and assembly, do not carry metal ornaments and other hard objects with you to prevent damage to the paintwork, seats and interior. Be sure to place the removed trim components properly to avoid scratching them.
- All the pictures in this manual are for reference only. Vehicle models with different configurations may have different pictures, but the installation methods are the same.

2. Installation tools



3. Product list

No.	Name	QTY	Picture
①	Strut	2	
②	ECU	1 set	
③	Wiring harness	1 set	
④	Power latch	1	
⑤	Added tailgate switch	1	
⑥	Other parts (screws, brackets, etc.)	1 set	Omitted



1. Remove the front left side trim panel and switch panel.



2. Remove the tailgate trim panels.



3. Remove the indicated trim panel to allow wiring harnesses to pass through.



4. Remove the the original gas struts.



5. Replace the left body bracket.



6. Replace the right body bracket.



7. Replace the left tailgate bracket.



8. Replace the right tailgate bracket.



9. Install the electric struts, L on the left and R on the right (the first letter of the strut code), making sure the ends with wiring harnesses are on the tailgate.



10. Thread the strut wiring harness through the circled hole. Both sides are the same



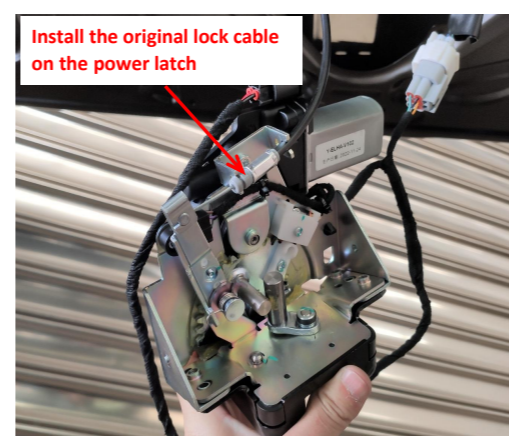
11. Route the left and right strut wiring harnesses to the tailgate.



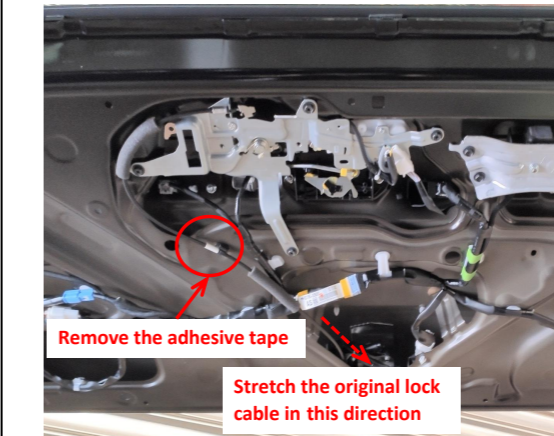
12. Remove the original latch.



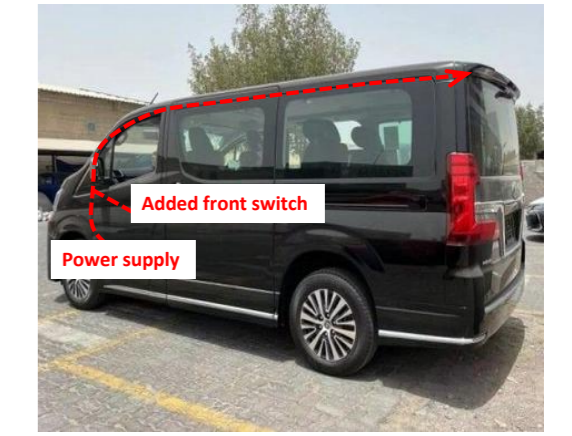
13. Connect the lock signal harness to the plugs of the power latch.



14. Install the original lock cable onto the power latch.



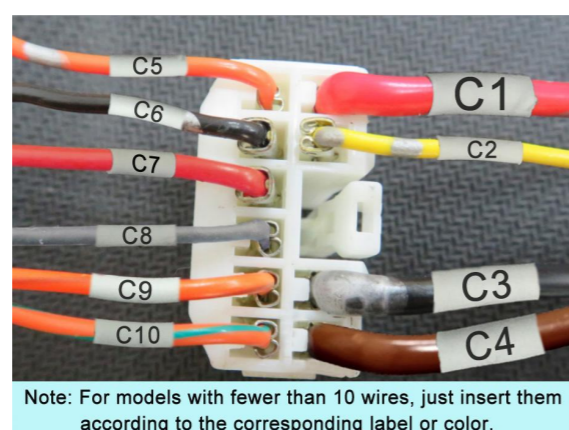
15. Stretch the original lock cable in the direction shown above for easy installation of the power latch.



16. Route the power harness along the roof (routing only, no plug or power connection).

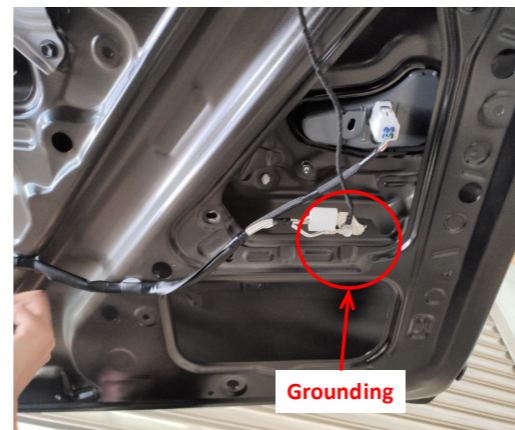


17. Thread the power harness to the tailgate (routing only, no plug or power connection).



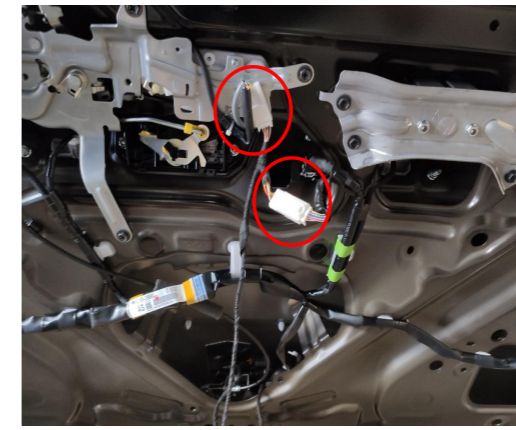
Note: For models with fewer than 10 wires, just insert them according to the corresponding label or color.

18. Insert the power harness terminals into the wiring harness connector according to the diagram.

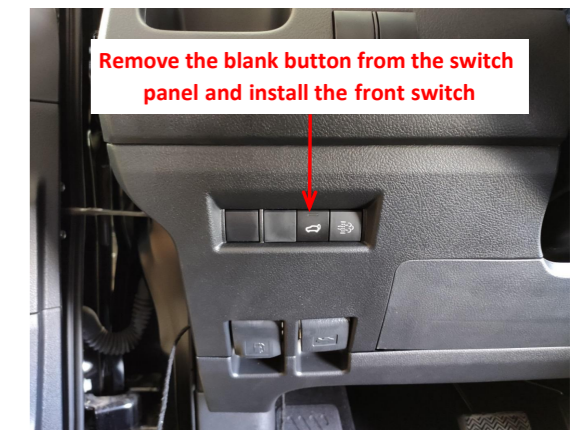


Grounding

19. Ground at the left side of the tailgate.

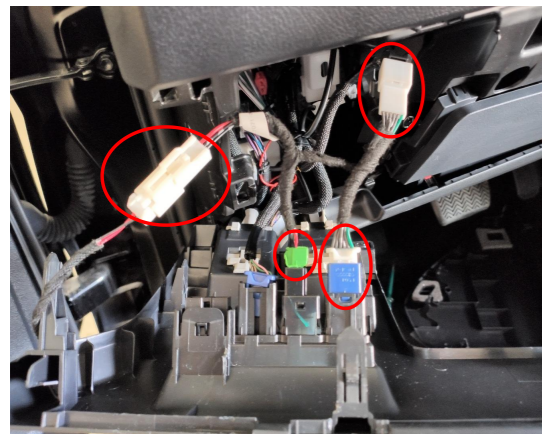


20. Connect the plugs of the power harness to the signal plugs at the tailgate.



Remove the blank button from the switch panel and install the front switch

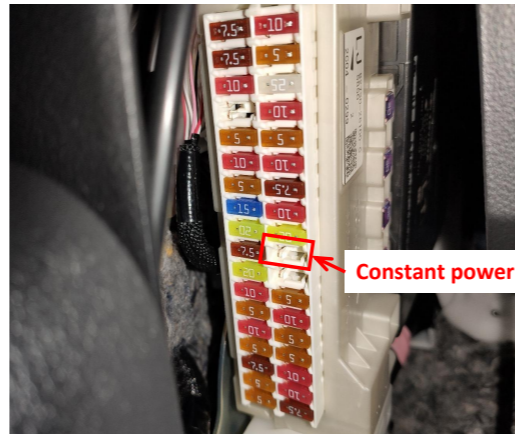
21. Remove the blank button from the switch panel, and install the front switch.



22. Connect to the plugs of the switch beside the front switch for backlight .

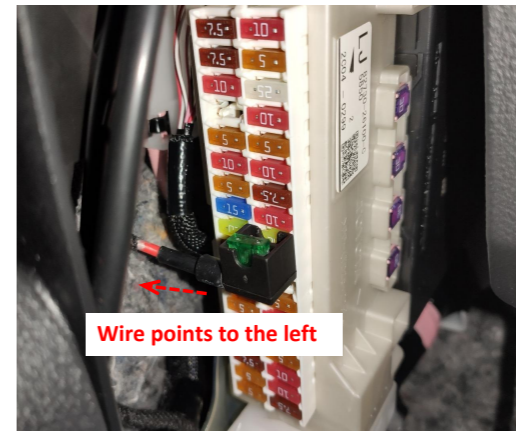
Check if all the plugs are properly connected.

23. Check if all the plugs are properly connected.



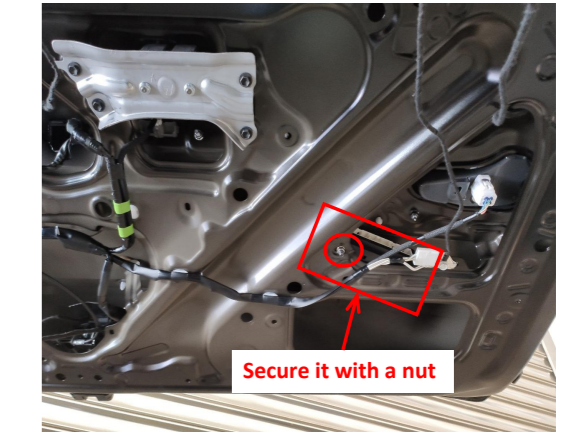
Constant power

24. The fuse box is located beside the pedals and the fuse slot for power supply is indicated above.



Wire points to the left

25. Plug the fuse tap into the fuse box, and pay attention to the direction of the wire.



Secure it with a nut

26. Place the ECU at the indicated position and secure it with a nut.



27. Insert the strut wiring harnesses ①②, lock signal harness ③, and power harness ④ into the ECU in sequence.



28. Press the added tailgate switch to open and close the tailgate once, the system completes initialization, and then test each function of the electric tailgate.



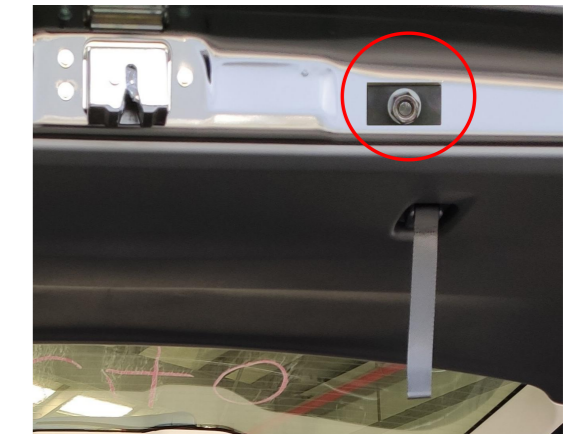
Stick the hole template here and then open a hole for installing the added tailgate switch

29. Stick the hole template to the tailgate as shown above and open a hole for installing the added tailgate switch.



Drill a hole with a φ14mm drill bit

30. Drill a hole at the indicated position with a φ14mm drill bit.



31. Install the hole opener at the indicated position.



32. Use the wrenches to open the hole.



33. Reinstall all the trim panels and fit the added tailgate switch in.

5. System initialization method

1. Press the added tailgate switch button to make the tailgate close automatically;
2. Press the switch button outside the tailgate to open the tailgate and it will make a long sound of "beep".
3. The system initialization is complete.

6. Instructions for the electric tailgate

1. Methods to open and close the tailgate:
 - Press the unlock button on the remote key 3 times;
 - Press the unlock button at the driver's area 3 times;
 - Press the original tailgate switch button;
 - Press the added tailgate switch button to close;
 - Press the added front switch button: press and hold to open and press once to close.

2. Method to pause the tailgate:

During the operation of the tailgate, press the button with any of the above methods, and the tailgate will be paused. Press again, and the tailgate will move in reverse.

3. Method to memorize the height:

Open the tailgate to the height you want to set, long press the added tailgate switch, and release the switch after hearing a long "beep ----". The height memory is complete.
Tip: During the operation of the tailgate, pause the tailgate, and then push the tailgate to the ideal height with your hand.

4. Meanings of the buzzer sound:

"Beep" once: Receiving an open/close or pause signal, the tailgate will immediately open/close or pause;
"Beep" twice: The tailgate has been fully opened or closed;
"Beep" three times: The resistance during opening or closing the tailgate is too large, and the intelligent anti-pinch has been turned on;
Long sound of "beep": The height memory is complete.