

Installation Manual

Compatible Model	CVolkswagen CMagotan B8
Year	2017-2023



8-ETVW-5111-01-00

1. Points to note

- For safety and to ensure the proper use of product, please ask a professional technician to install. Do not disassemble and install it privately in case of damaging product and installation accidents.
- Please arrange each wiring harness according to the wiring method in this manual, be sure to tie each wiring harness to the vehicle's original wiring harness with cable ties. Make sure the wiring harnesses are not located at the fasteners or screw holes to avoid the wiring harnesses crushed by the vehicle interior trim panel buckles and screws during the installation process.
- Because some of the wiring harness terminals (as shown in the red ellipses below) are not inserted into the wiring harness connectors during manufacture, please insert terminals into the wiring harness connector first to avoid short circuit between terminals after the wiring harnesses have been arranged, then connect other plugs of the wiring harnesses (as shown in the blue ellipses below) with the original plugs.



- Check the function display of instrument panel before installation, whether the button of the vehicle is working properly, whether the doors and windows work properly while opening and closing, whether there are scratches on the internal and external surfaces of the vehicle; and report to the customers in a timely manner if there are any problems.
- During the process of disassembly and assembly, do not carry metal ornaments and other hard objects with you to prevent damage to the paintwork, seats and interior. Be sure to place the removed trim components properly to avoid scratching them.
- All the pictures in this manual are for reference only, vehicle models with different configurations may have different pictures, but the installation methods are the same.

2. Installation tools



3. Product list

No.	Name	QTY	Picture
①	Strut	2	
②	ECU	1 set	
③	Wiring harness	1 set	
④	Power latch	1	
⑤	Added tailgate switch	1	
⑥	Other parts (screws, brackets, etc.)	1 set	Omitted



1. Remove the front left door sill trim, switch panel and the rest pedal.



2. Remove the rear left door sill trim and B-Pillar trim.



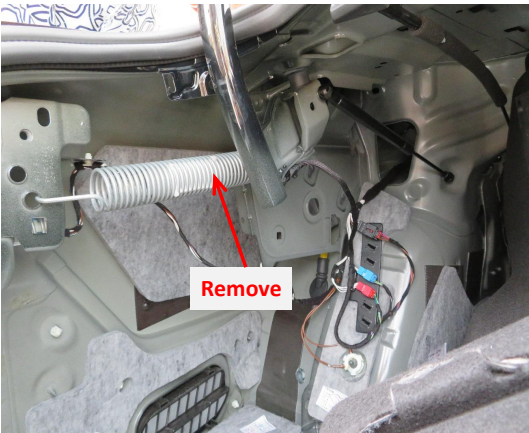
3. Remove the tailgate trim.



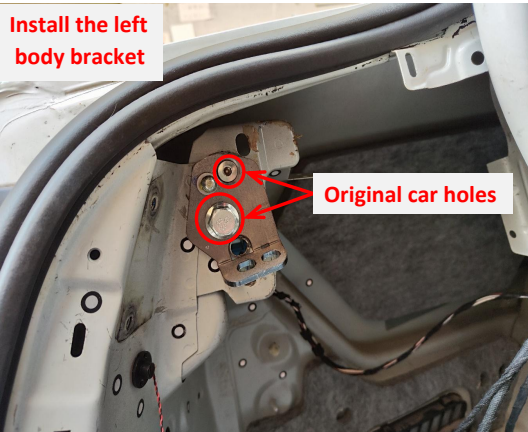
4. Remove the trunk floor mat and the door sill trim.



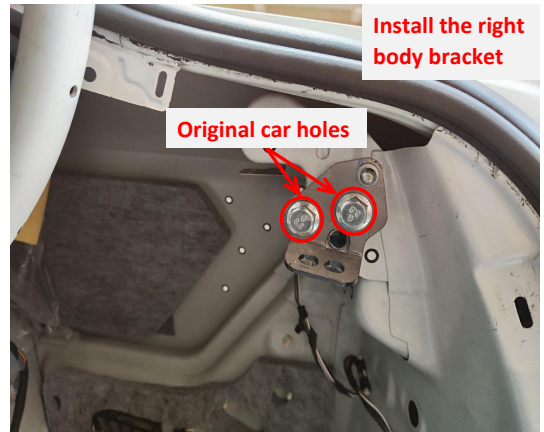
5. Remove the trunk trim on the left and right sides and fold the rear seat.



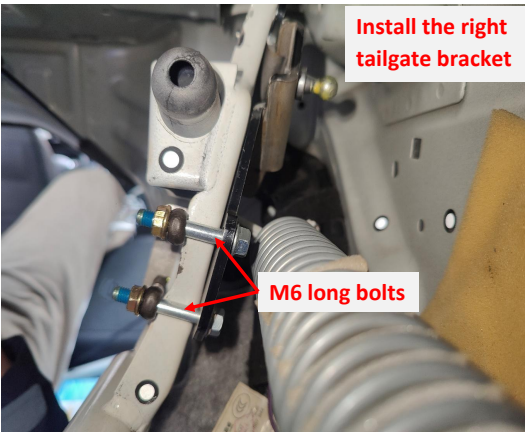
6. Remove the springs on both sides of the trunk.



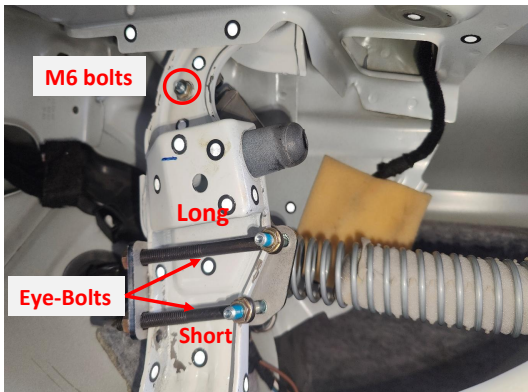
7. Install the left body bracket.



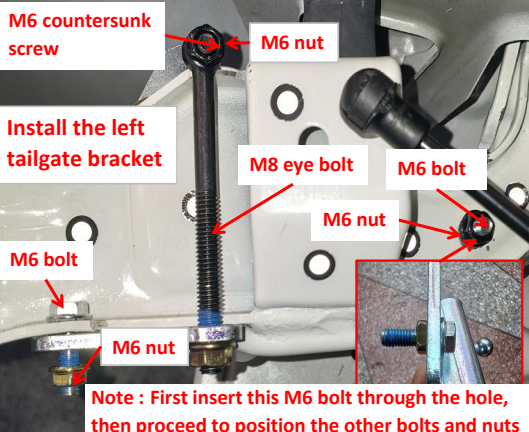
8. Install the right body bracket.



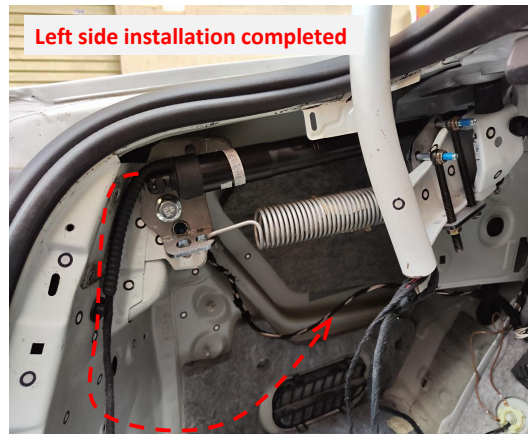
9. Install the tailgate bracket on the right hinge.



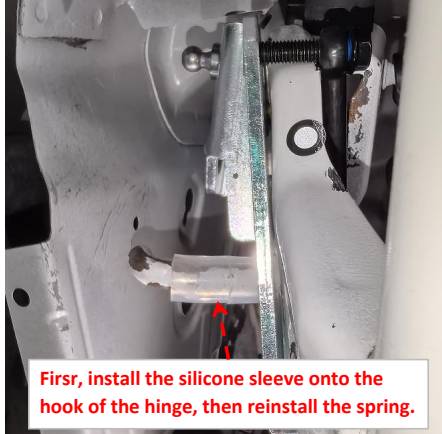
10. Pass the M6 long bolts through the bracket and the eye bolts. Pass the eye bolts through the other side of the brackets and tight them with nuts.



11. Install the left tailgate bracket in the same way and pay attention to Pass the original ball stud through the bracket.



12. Reinstall the left spring and install the left struts.(Strut codes start with L or R for left/right.)



13. Install the silicone sleeve onto the hinge, then reinstall the spring. The installation method is the same for both



14. Route the right strut wiring harness to the left side of the trunk.



15. Remove the original latch.



16. Connect the plugs of the lock signal harness to the power latch.

 <p>17. Connect the plugs of the lock signal harness to the power latch.</p>	 <p>18. Connect the plugs of the lock signal harness to the original tailgate switch.</p>	 <p>19. Install the power latch.</p>	 <p>20. Route the lock signal harness to the left side of the trunk through the left hinge.</p>	 <p>21. Insert the lock signal harness terminals into the connector as shown above.</p>
 <p>22. Route the power harness.</p>	 <p>23. Ground at the indicated location on the left side of the trunk.</p>	 <p>24. Check all the plugs.</p>	 <p>25. The fuse box is located beside the pedals and the slot for power supply is indicated above.</p>	 <p>26. Plug the fuse tap into the fuse box. Pay attention to the direction of wire.</p>
 <p>27. Secure the ECU at the indicated location with a nut.</p>	 <p>28. Insert the strut wiring harnesses ①②, lock signal harness ③, and power harness ④ into the ECU in</p>	<p>29. Check if the power latch and the electric struts are working properly.</p> <ol style="list-style-type: none">1. Manually adjust the latch to the locked state;2. Manually close the tailgate to the position where the latch touches the striker;3. Press the original tailgate switch button to open the tailgate and check whether the tailgate can be opened normally and the latch can be unlocked normally;4. Confirm that the power latch and the electric struts work properly before continuing to install.	 <p>30. Test each function of the electric tailgate.</p>	 <p>31. Reinstall all the trim panels and install the added tailgate switch.</p>
<p>5. System initialization method</p> <ol style="list-style-type: none">1. Press the added tailgate switch button to make the tailgate close automatically;2. Press the switch button outside the tailgate to open the tailgate and it will make a long sound of "beep".3. The system initialization is complete. <p>6. Instructions for the electric tailgate</p> <ol style="list-style-type: none">1. Methods to open and close the tailgate:<ul style="list-style-type: none">●Long press the tailgate button on the remote key;●Press the tailgate button at the driver's area: press and hold for 4s to open;●Press the original tailgate switch button;●Press the added tailgate switch button.2. Method to pause the tailgate: During the operation of the tailgate, press the button with any of the above methods, and the tailgate will be paused. Press again, and the tailgate will move in reverse.	<ol style="list-style-type: none">3. Instructions for the added tailgate switch<ol style="list-style-type: none">①Closing speed acceleration (5 Settings)<ol style="list-style-type: none">1.Press and hold the switch button until hearing the first short beep sound.2.After releasing the button, you will hear a short beep, indicating that the closing speed acceleration has taken effect.3.Repeat this step once to increase by one setting.②Opening speed acceleration (5 Settings)<ol style="list-style-type: none">1.Press and hold the switch button until hearing the second short beep sound2. After releasing the button, you will hear two short beeps, indicating that the opening speed acceleration has taken effect.3. Repeat this step once to increase by one setting.③Settings of the voice module<ol style="list-style-type: none">1.Press and hold the switch button until hearing the third short beep sound.2.After releasing the button, you will hear three short beeps, indicating that the voice module has entered configuration mode. (For details, see the voice module operation manual)④Block the voice module<ol style="list-style-type: none">1.Press and hold the added switch button until hearing the fourth beep sound.2.After releasing the button, you will hear four short beeps indicating that the voice module has been blocked.	<ol style="list-style-type: none">⑤Height setting<ol style="list-style-type: none">1.Press and hold the switch button until hearing the fifth short beep sound.2.After releasing the button, you will hear a long beep sound indicating that the height setting has taken effect.⑥Switch between quick/slow press of the unlock button on remote key<ol style="list-style-type: none">1.Press and hold the switch button until hearing the sixth short beep sound.2.After releasing the button, you will hear a long beep sound and a short beep sound indicating that the switch between quick and slow press of the unlock button has taken effect.⑦Switch between pressing the unlock button twice/three times<ol style="list-style-type: none">1.Press and hold the switch button until hearing the seventh short beep sound.2.After releasing the button, you will hear a long beep sound and two short beeps indicating that the switch between pressing the unlock button twice/three times has taken effect.⑧Braking force increase (five settings)<ol style="list-style-type: none">1.Press and hold the switch button until hearing the eighth short beep sound.2.After releasing the button, you will hear a long beep sound and three short beeps indicating that the switch between pressing the unlock button twice/three times has taken effect.3.Repeat this step to increase by one setting.	<ol style="list-style-type: none">⑨Restore to factory settings<ol style="list-style-type: none">1.Press and hold the switch button until hearing the ninth short beep sound.2.After releasing the button, you will hear a long beep sound and four short beeps indicating that the restoration to the factory setting has taken effect.4. Meanings of the buzzer sound: "Beep" once: Receiving an open/close or pause signal, the tailgate will immediately open/close or pause; "Beep" twice: The tailgate has been fully opened or closed; "Beep" three times: The resistance during opening or closing the tailgate is too large, and the intelligent anti-pinch has been turned on.	