

# Installation Manual

Compatible Model	CCadillac CXT4
Year	2018-2022



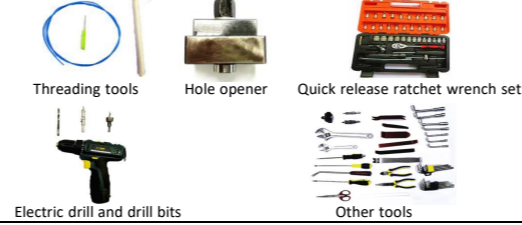
## 1. Points to note

- For safety and to ensure the proper use of product, please ask a professional technician to install. Do not disassemble and install it privately in case of damaging product and installation accidents.
- Please arrange each wiring harness according to the wiring method in this manual, be sure to tie each wiring harness to the vehicle's original wiring harness with cable ties. Make sure the wiring harnesses are not located at the fasteners or screw holes to avoid the wiring harnesses crushed by the vehicle interior trim panel buckles and screws during the installation process.
- Because some of the wiring harness terminals (as shown in the red ellipses below) are not inserted into the wiring harness connectors during manufacture, please insert terminals into the wiring harness connector first to avoid short circuit between terminals after the wiring harnesses have been arranged, then connect other plugs of the wiring harnesses (as shown in the blue ellipses below) with the original plugs.



- Check the function display of instrument panel before installation, whether the button of the vehicle is working properly, whether the doors and windows work properly while opening and closing, whether there are scratches on the internal and external surfaces of the vehicle; and report to the customers in a timely manner if there are any problems.
- During the process of disassembly and assembly, do not carry metal ornaments and other hard objects with you to prevent damage to the paintwork, seats and interior. Be sure to place the removed trim components properly to avoid scratching them.
- All the pictures in this manual are for reference only, vehicle models with different configurations may have different pictures, but the installation methods are the same.

## 2. Installation tools



## 3. Product list

No.	Name	QTY	Picture
①	Strut	2	
②	ECU	1 set	
③	Wiring harness	1 set	
④	Power latch	1	
⑤	Added tailgate switch	1	
⑥	Other parts (screws, brackets, etc.)	1 set	Omitted



1. Remove the trim panel on the left side of the front passenger seat.



2. Remove the front left side trim panel, door sill panel and storage box.



3. Remove the trim panel on the right side of the driver's seat.



4. Remove the rear left side door sill panel and B-pillar trim panel.



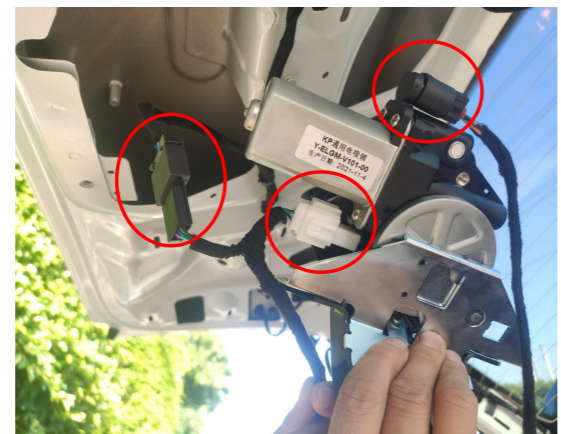
5. Remove the tailgate trim panels.



6. Remove the trim panel on the left side of the trunk to allow wiring harnesses to pass through.



7. Remove the original latch.



8. Connect the lock signal harness to the plugs of the power latch and install the power latch.



9. Connect the lock signal harness to the plugs of the original tailgate switch.



10. Connect the lock signal harness to the added tailgate switch.



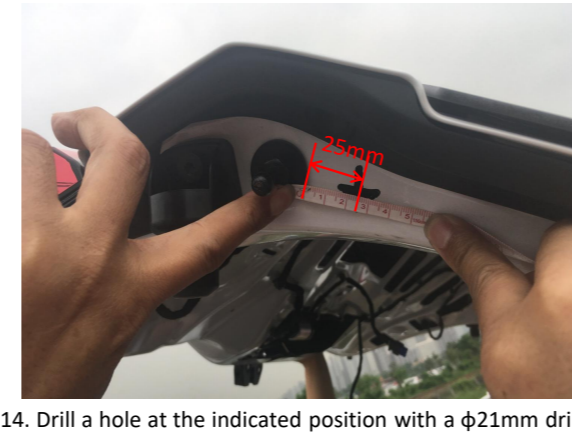
11. Remove the original gas struts.



12. Replace the bracket on the left side of the car body.



13. Replace the bracket on the right side of the car body.



14. Drill a hole at the indicated position with a  $\phi 21\text{mm}$  drill bit to allow the strut wiring harness to pass through; both sides are the same.



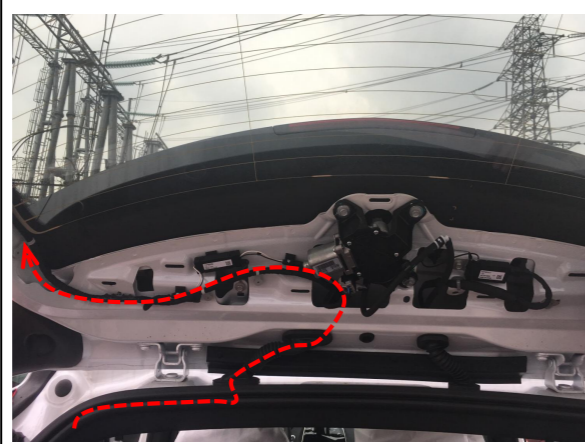
15. Install the electric struts, L on the left and R on the right (the first letter of the strut code), making sure the ends with wiring harnesses are on the tailgate.



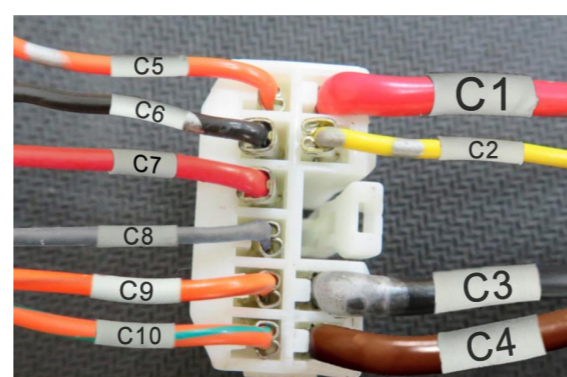
16. Tie the rubber tube with the strut as shown above and plug the hole securely; both sides are the same.



17. Thread the strut wiring harnesses into the tailgate.

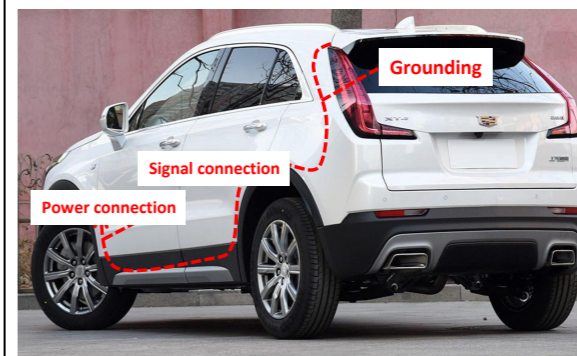


18. Route the power harness to the tailgate as shown above (routing only, no plug or power connection).

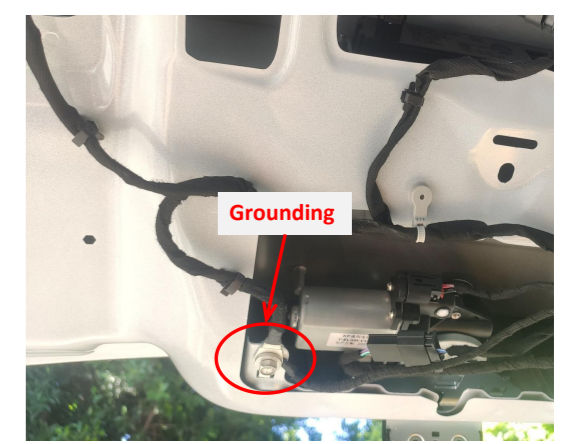


Note: For models with fewer than 10 wires, just insert them according to the corresponding label or color.

19. Insert the power harness terminals into the wiring harness connector.



20. Route the power harness.



21. Ground beside the power latch.



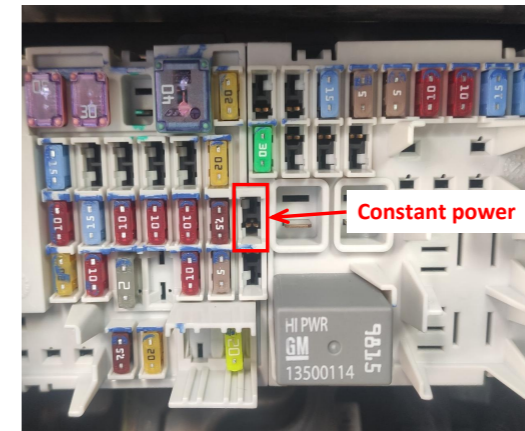
22. Connect the power harness to the indicated pink signal plug and its socket.



23. Thread the signal wire of the pink plug to the driver's area.

Check if all the plugs are properly connected.

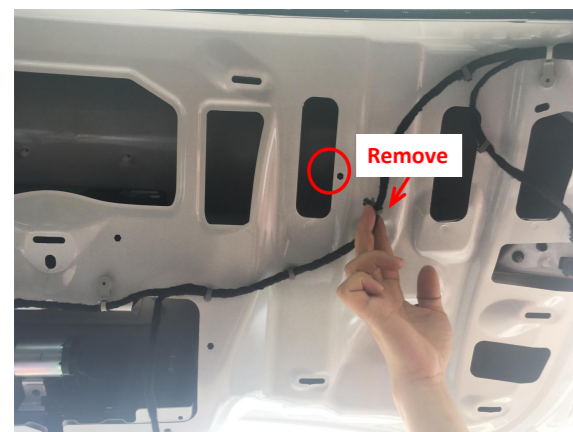
24. Check all the plugs.



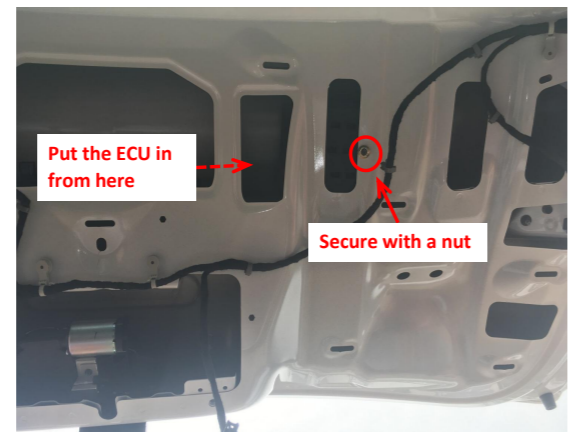
25. The fuse box is located at the driver's area and the fuse slot for power supply is indicated above.



26. Plug the fuse tap into the fuse box and pay attention to the direction.



27. Remove the indicated fastener.



28. Place the ECU bracket at the indicated position and secure it with nut.



29. Insert the strut wiring harnesses ①②, lock signal harness ③, and power harness ④ into the ECU in sequence and then mount the ECU onto its bracket.



30. Insert the strut wiring harnesses ①②, lock signal harness ③, and power harness ④ into the ECU in sequence and then mount the ECU onto its holder.



31. Reinstall all trim panels and install the added tailgate switch (replace the original tailgate handle).

**5. System initialization method**

1. Press the added tailgate switch button to make the tailgate close automatically;
2. Press the switch button outside the tailgate to open the tailgate and it will make a long sound of "beep".
3. The system initialization is complete.

**6. Instructions for the electric tailgate**

1. Methods to open and close the tailgate:
  - Press the unlock button on the remote key 3 times;
  - Press the unlock button at the driver's area 3 times;
  - Press the original tailgate switch button;
  - Press the added tailgate switch button.

**2. Method to pause the tailgate:**

During the operation of the tailgate, press the button with any of the above methods, and the tailgate will be paused. Press again, and the tailgate will move in reverse.

**3. Method to memorize the height:**

Open the tailgate to the height you want to set, long press the added tailgate switch, and release the switch after hearing a long "beep ----". The height memory is complete.  
Tip: During the operation of the tailgate, pause the tailgate, and then push the tailgate to the ideal height with your hand.

**4. Meanings of the buzzer sound:**

"Beep" once: Receiving an open/close or pause signal, the tailgate will immediately open/close or pause;  
"Beep" twice: The tailgate has been fully opened or closed;  
"Beep" three times: The resistance during opening or closing the tailgate is too large, and the intelligent anti-pinch has been turned on;  
Long sound of "beep": The height memory is complete.