

# Installation Manual

Compatible Model	CBenz E-Class
Year	2011-2015



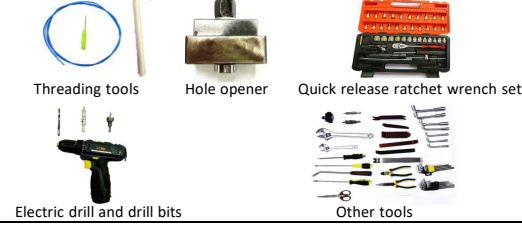
## 1. Points to note

- For safety and to ensure the proper use of product, please ask a professional technician to install. Do not disassemble and install it privately in case of damaging product and installation accidents.
- Please arrange each wiring harness according to the wiring method in this manual, be sure to tie each wiring harness to the vehicle's original wiring harness with cable ties. Make sure the wiring harnesses are not located at the fasteners or screw holes to avoid the wiring harnesses crushed by the vehicle interior trim panel buckles and screws during the installation process.
- Because some of the wiring harness terminals (as shown in the red ellipses below) are not inserted into the wiring harness connectors during manufacture, please insert terminals into the wiring harness connector first to avoid short circuit between terminals after the wiring harnesses have been arranged, then connect the other plugs of the wiring harnesses (as shown in the blue ellipses below) with the original plugs.



- Check the function display of instrument panel before installation, whether the button of the vehicle is working properly, whether the doors and windows work properly while opening and closing, whether there are scratches on the internal and external surfaces of the vehicle; and report to the customers in a timely manner if there are any problems.
- During the process of disassembly and assembly, do not carry metal ornaments and other hard objects with you to prevent damage to the paintwork, seats and interior. Be sure to place the removed trim components properly to avoid scratching them.
- All the pictures in this manual are for reference only, vehicle models with different configurations may have different pictures, but the installation methods are the same.

## 2. Installation tools



## 3. Product list

No.	Name	QTY	Picture
①	Strut	2	
②	ECU	1 set	
③	Wiring harness	1 set	
④	Power latch	1	
⑤	Added tailgate switch	1	
⑥	Other parts (screws, brackets, etc.)	1 set	Omitted



1. Remove the tailgate trim panels.



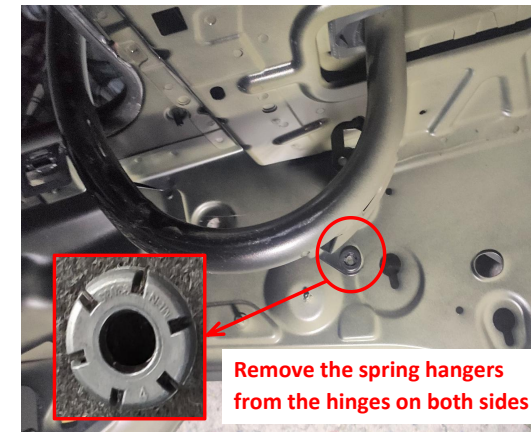
2. Remove the trunk trim panels.



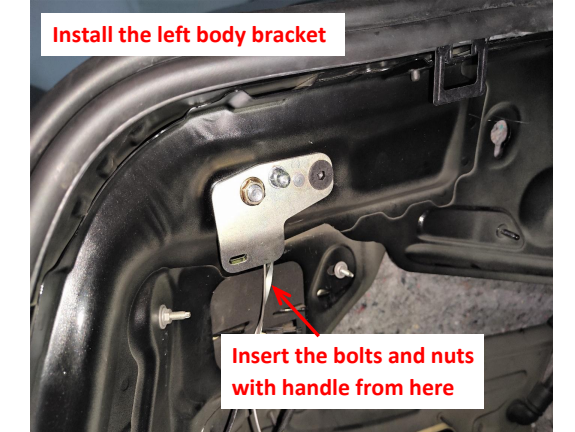
3. Remove the rear right side trim panel.



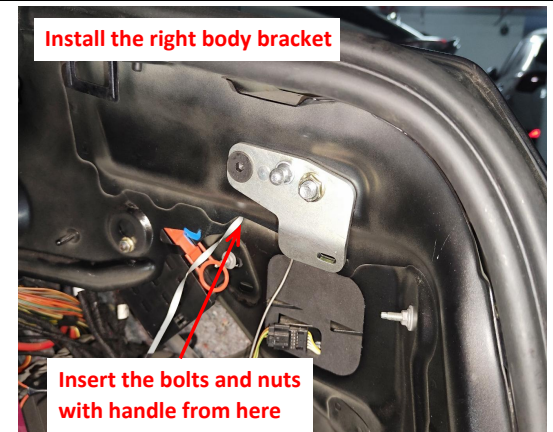
4. Remove the left and right springs from the trunk.



5. Remove the spring hangers from the tailgate hinges.



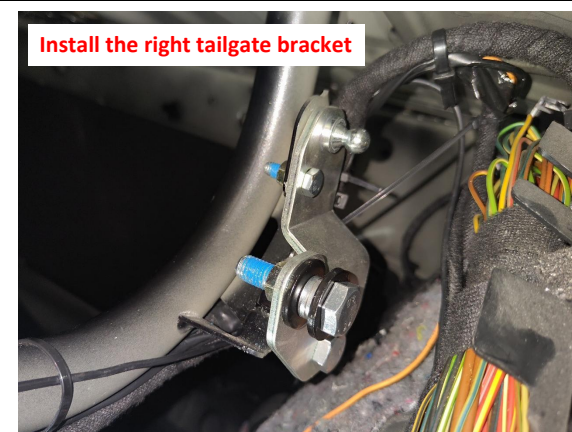
6. Install the body bracket on the left side of the trunk.



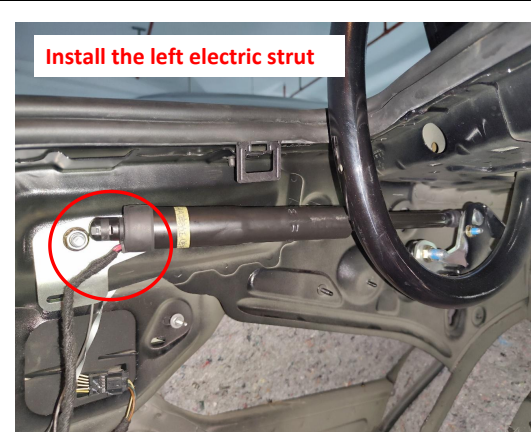
7. Install the body bracket on the right side of the trunk.



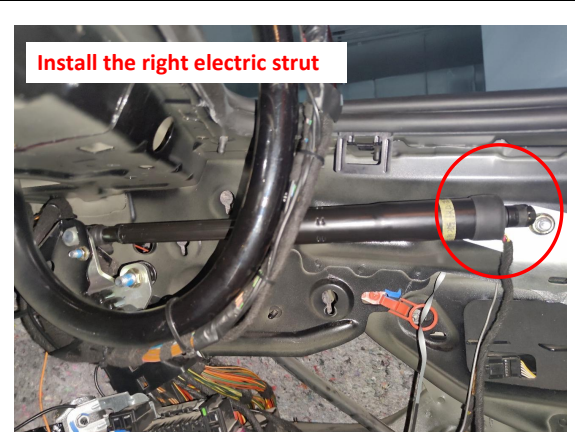
8. Install the tailgate bracket on the left hinge.



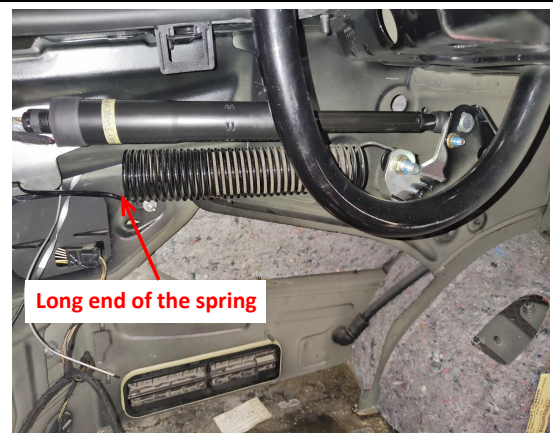
9. Install the tailgate bracket on the right hinge.



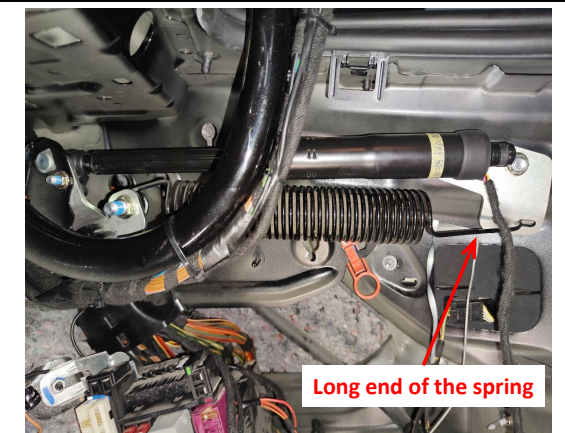
10. Install the left electric strut, L on the left and R on the right (the first letter of the strut code).



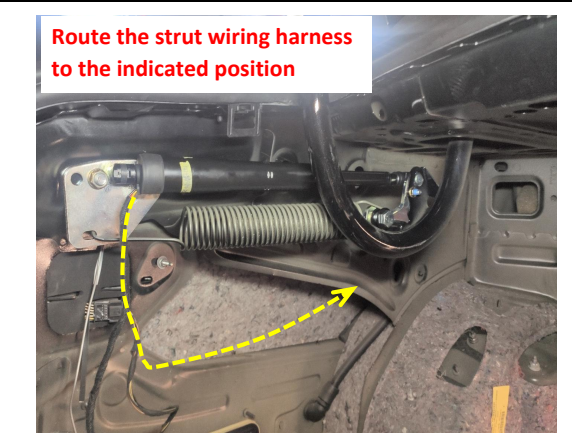
11. Install the right electric strut, L on the left and R on the right (the first letter of the strut code).



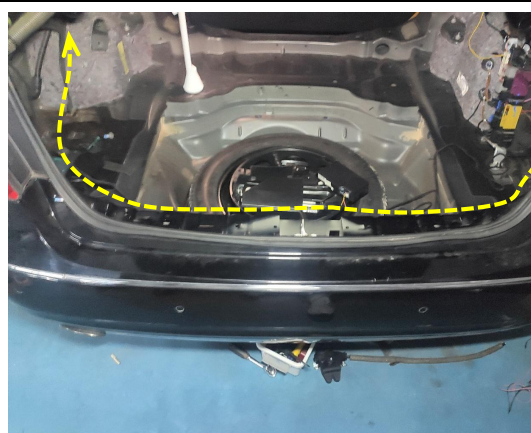
12. Hang the left spring back.



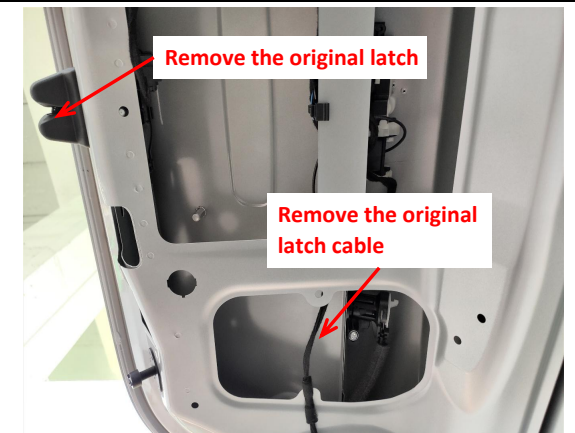
13. Hang the right spring back.



14. Route the strut wiring harness to the indicated position and tie it along with the original wiring harness.

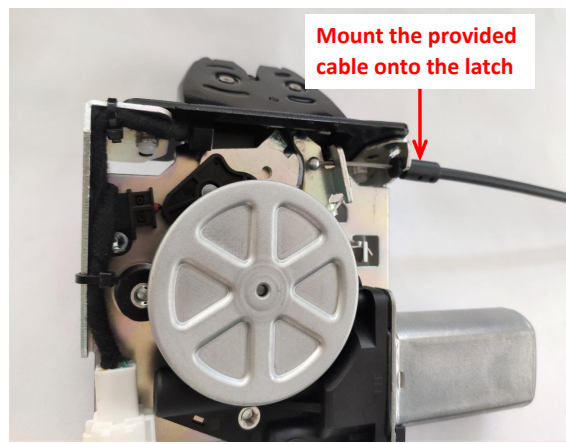


15. Route the right strut harness to the left side of the trunk and tie it along with the original wiring harness.



16. Remove the original latch and latch cable.





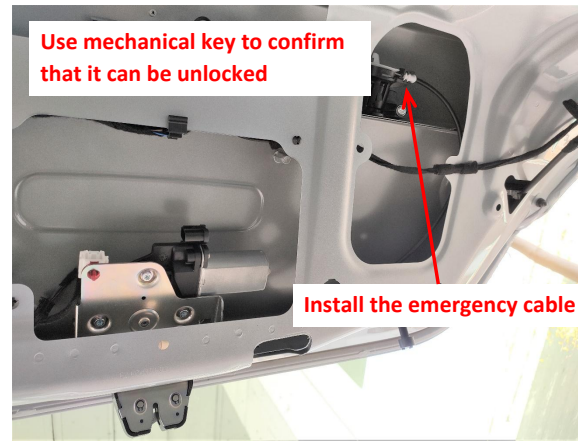
Mount the provided cable onto the latch

17. Mount the original lock cable onto the power latch.



Adjust the latch to the locked state

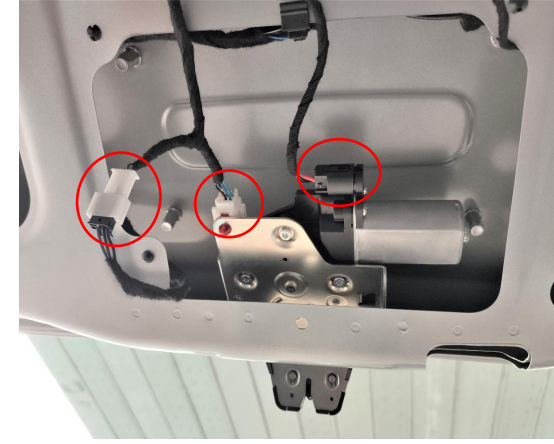
18. Install the lock actuator and secure it with original screws. Manually adjust the latch to the locked state to prevent accidental closing during the installation process.



Use mechanical key to confirm that it can be unlocked

Install the emergency cable

19. Install the emergency cable. Use mechanical key confirm that the lock can be unlocked and then relock it.



20. Connect the plugs of lock signal harness to the plugs of the power latch.

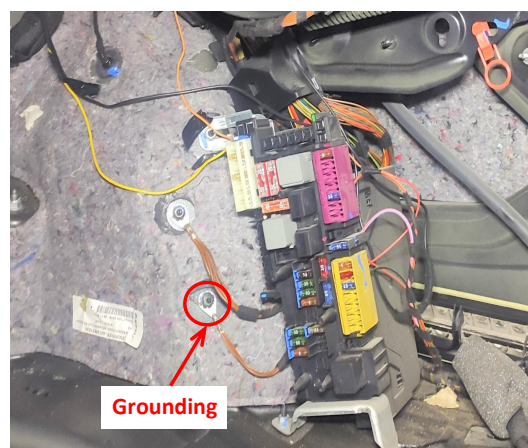


21. Connect the plugs of lock signal harness to the plugs of original tailgate switch and the added switch.



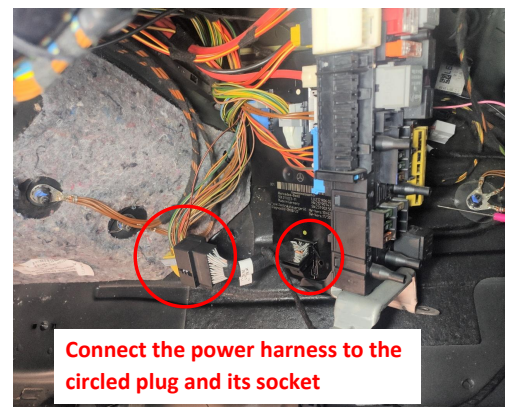
Bury the emergency wires of the lock signal harness here

22. Route the emergency wires of the lock signal harness along the right hinge to the right side of rear seat (the emergency wires should be in place for emergency use).



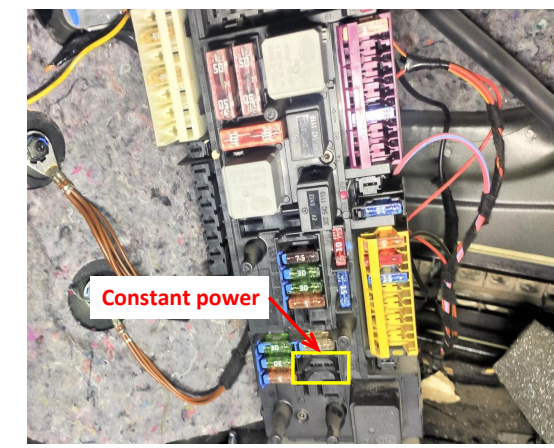
Grounding

23. Ground at the right side of the trunk.



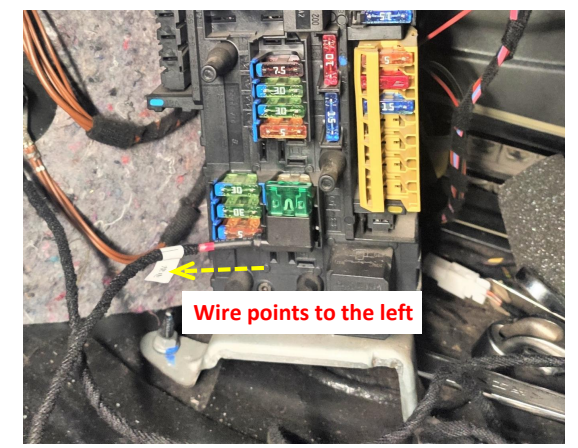
Connect the power harness to the circled plug and its socket

24. Connect the plugs of power harness to the circled signal plug and its socket behind the fuse box located at the right side of the trunk.



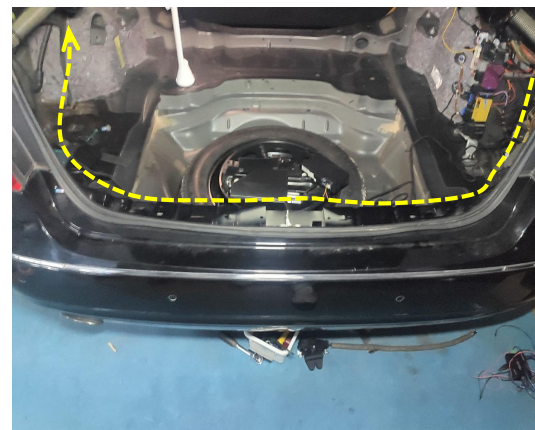
Constant power

25. The fuse slot for power supply is indicated above.

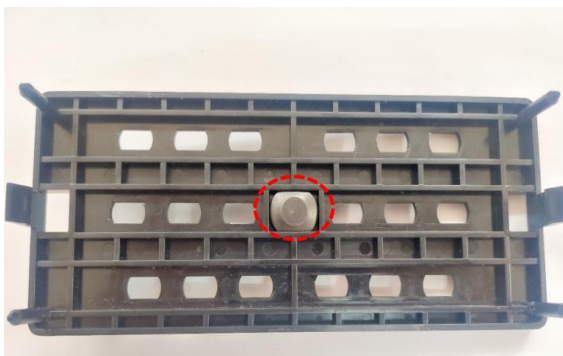


Wire points to the left

26. Plug the fuse tap into the fuse box with wire points to the left.

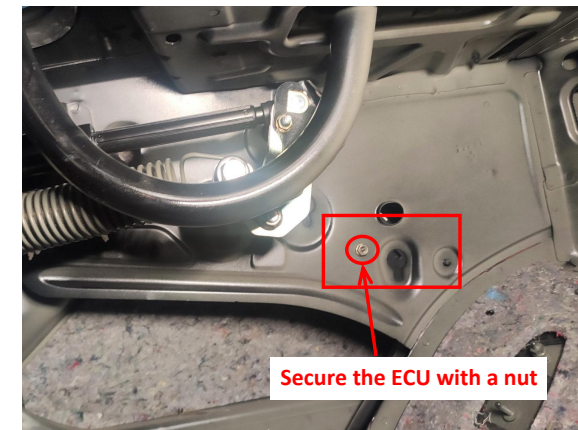


27. Route the power harness to the left side of tailgate and tie it along with original wiring harness.



The screw can be freely adjusted on the bracket. Find an appropriate location for easy installation.

28. Adjust the screw position and then mount the ECU onto its bracket.



Secure the ECU with a nut

29. Place the ECU at the indicated position on the left side of the trunk and secure it with a nut.



30. Insert the strut wiring harnesses ① ②, lock signal harness ③, and power harness ④ into the ECU in sequence.



31. Manually close the tailgate until it touches the striker, then press the original tailgate switch button to open the tailgate. The system initialization is complete, and then test each function of the electric tailgate.



Drill a hole with the  $\phi 20\text{mm}$  drill bit for installing the added switch

32. Drill a hole at the indicated position for the installing the added switch



Install the added switch

33. Install all trim panels back and install the added tailgate switch.

**5. System initialization method**

1. Press the added tailgate switch button to make the tailgate close automatically;
2. Press the switch button outside the tailgate to open the tailgate and it will make a long sound of "beep".
3. The system initialization is complete.

**6. Instructions for the electric tailgate**

1. Methods to open and close the tailgate:
  - Press the tailgate button at the driver's area;
  - Press and hold the tailgate button on the remote key;
  - Press the original tailgate switch button to open;
  - Press the added tailgate switch button to close.

2. Method to pause the tailgate: During the operation of the tailgate, press the button with any of the above methods, and the tailgate will be paused. Press again, and the tailgate will move in reverse.

3. Method to memorize the height: Open the tailgate to the height you want to set, long press the added tailgate switch, and release the switch after hearing a long "beep ----". The height memory is complete. Tip: During the operation of the tailgate, pause the tailgate, and then push the tailgate to the ideal height with your hand.

4. Meanings of the buzzer sound:
  - "Beep" once: Receiving an open/close or pause signal, the tailgate will immediately open/close or pause;
  - "Beep" twice: The tailgate has been fully opened or closed;
  - "Beep" three times: The resistance during opening or closing the tailgate is too large, and the intelligent anti-pinch has been turned on;
  - Long sound of "beep": The height memory is complete.