

Installation Manual

Compatible Model	CVolvo CS60
Year	2020-2023



8-ETVL-5002-01-00

1. Points to note

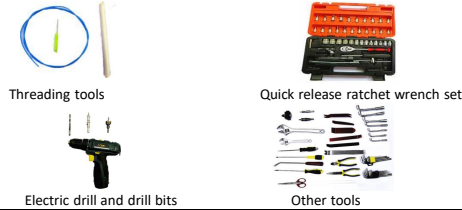
- For safety and to ensure the proper use of product, please ask a professional technician to install. Do not disassemble and install it privately in case of damaging product and installation accidents.
- Please arrange each wiring harness according to the wiring method in this manual, be sure to tie each wiring harness to the vehicle's original wiring harness with cable ties. Make sure the wiring harnesses are not located at the fasteners or screw holes to avoid the wiring harnesses crushed by the vehicle interior trim panel buckles and screws during the installation process.
- Because some of the wiring harness terminals (as indicated by the red ellipses below) are not plugged into the wiring harness connectors during manufacture, please insert terminals into the wiring harness connector first to avoid short circuit between terminals after the wiring harnesses have been arranged, then connect other plugs of the wiring harnesses (as indicated by the blue ellipses below) with the original plugs.



- Check the function display of instrument panel before installation, whether the button of the vehicle is working properly, whether the doors and windows work properly while opening and closing, whether there are scratches on the vehicle internal and exterior surfaces; and report to the customers in a timely manner if there are any problems.

- During the process of disassembly and assembly, do not carry metal ornaments and other hard objects with you to prevent damage to the paintwork, seats and interior. Be sure to place the removed trim components properly to avoid scratching them.
- All the pictures in this manual are for reference only, vehicle models with different configurations may have different pictures, but the installation methods are the same.

2. Installation tools



3. Product list

No.	Name	QTY	Picture
①	Strut	2	
②	ECU	1 set	
③	Wiring harness	1 set	
④	Power latch	1	
⑤	Added tailgate switch	1	
⑥	Other parts (screws, brackets, etc.)	1 set	Omitted



1. Remove the indicated driver side trim panels and door sill panel.



2. Remove the rear left side door sill panels.



3. Remove the tailgate and hinge trim panels



4. Remove the trunk trim panels and floor mat.



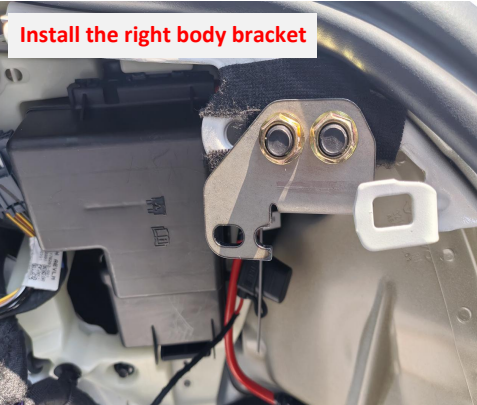
5. Remove the springs on both sides.



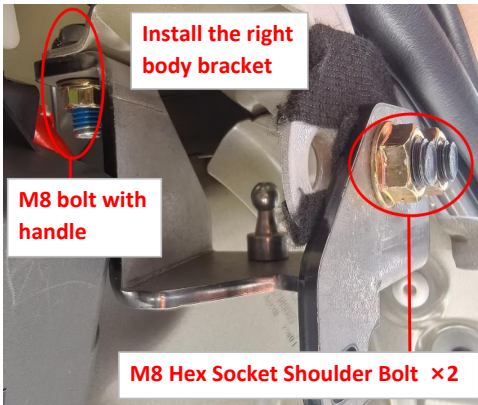
6. Install the left body bracket on the left side of the trunk.



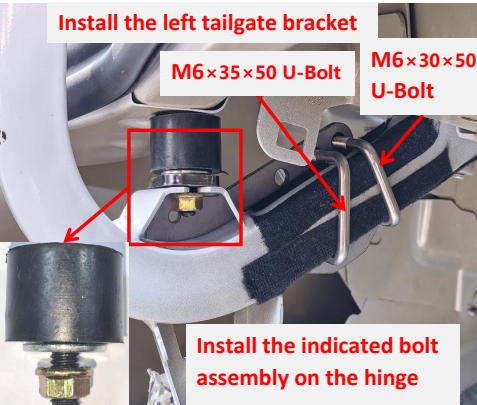
7. Secure the bracket on the original holes. Install the M8 bolt first, then install the M10 bolts.



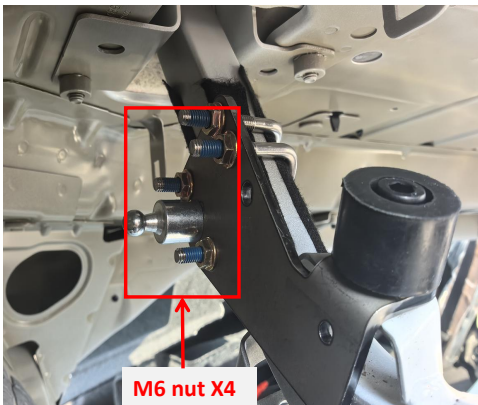
8. Install the right body bracket on the right side of the trunk.



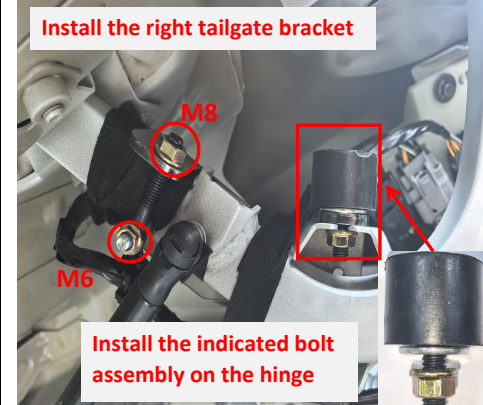
9. Secure the bracket on the original holes. Install the M8 bolt first, then install the M10 bolts.



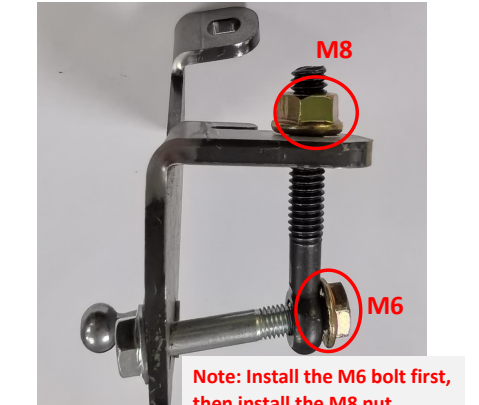
10. Install the left tailgate bracket.



11. Tighten the four M6 nuts.



12. Install the right tailgate bracket.



13. Installation diagram of the right tailgate bracket.



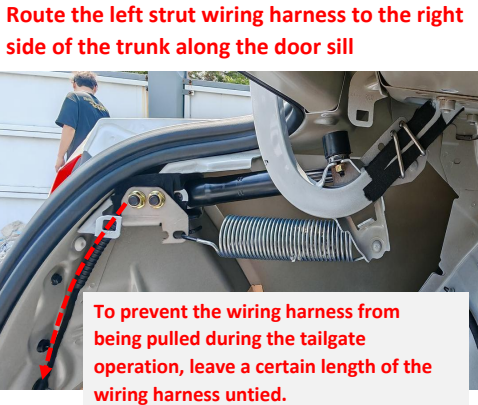
14. Install the electric struts, L on the left and R on the right (the first letter of the strut code). The end with wiring harness should be on the car body.



15. Hang the original spring on the brackets.



16. Route the right strut wiring harness.



17. Route the left strut wiring harness to the right side of the trunk along the door sill.



18. Pass the plug of the strut wiring harness through the indicated position.



19. Remove the original latch and install our power latch.



20. Connect the plugs of the lock signal harness to the plugs of power latch.

 <p>Connect to the original tailgate switch</p>	 <p>22. If there is a tailgate switch as shown above, connect it to the plug of lock signal harness. If there is no such tailgate switch, connect the provided tailgate switch to the plug of lock signal harness.</p>	 <p>Thread the front switch wiring harness</p>	 <p>Route the front switch wiring harness of the power harness to the driver's area</p> <p>Routing only, no plug or power connection</p>	 <p>Thread the emergency wires to the rear left seat</p>	 <p>26. Connect the plugs to the front switch.</p>
 <p>Grounding</p>	 <p>There is a sponge bag containing the signal plugs on the right side of the trunk</p>	 <p>Route the power harness to the trunk</p>	<p>Check if all the plugs are properly connected.</p>	 <p>Wire connector for power supply</p>	 <p>Install the ECU bracket</p>
 <p>33. Insert the left and right strut wiring harnesses ① ②, lock signal harness ③, and power harness ④ into the ECU in sequence.</p>	<p>27. Ground at the indicated position on the right side of the trunk. The grounding wire must be installed as shown in the diagram.</p> <p>28. Connect the plugs of the power harness to the signal plugs.</p> <p>29. Route the power harness to the right side of the trunk.</p> <p>30. Check all the plugs.</p>	 <p>35. Test each function of the electric tailgate.</p>	 <p>36. For model without the tailgate switch, stick the hole template to the indicated position and open a hole for the added tailgate switch.</p>	 <p>37. Fit the added tailgate switch in and reinstall all trim panels.</p>	<p>31. Connect to the fuse box on the right side of the trunk for power supply.</p> <p>32. Secure the ECU bracket at the indicated position.</p> <p>5. System initialization method</p> <ol style="list-style-type: none">1. Press the added tailgate switch button, and the tailgate will close automatically;2. Press the tailgate switch button outside the tailgate to open the tailgate and it will make a long sound of "beep".3. The system initialization is complete. <p>6. Instructions for the electric tailgate</p> <ol style="list-style-type: none">1. Methods to open and close the tailgate:<ul style="list-style-type: none">● Press and hold the tailgate button on the remote key (open only)● Press the unlock button at the driver's area or the unlock button on the remote key 3 times;● Press and hold front switch button: press and hold to open and press twice to close (press for 1s, release for 1s and press again for 1s).● Press the original tailgate switch button;● Press the added tailgate switch button.
<p>3. Instructions for the added tailgate switch</p> <p>① Closing speed acceleration (5 Settings)</p> <ol style="list-style-type: none">1. Press and hold the switch button until hearing the first short beep sound2. After releasing the button, you will hear a short beep, indicating that the closing speed acceleration has taken effect.3. Repeat this step once to increase by one setting. <p>② Opening speed acceleration (5 Settings)</p> <ol style="list-style-type: none">1. Press and hold the switch button until hearing the second short beep sound2. After releasing the button, you will hear two short beeps, indicating that the opening speed acceleration has taken effect.3. Repeat this step once to increase by one setting. <p>③ Settings of the voice module</p> <ol style="list-style-type: none">1. Press and hold the switch button until hearing the third short beep sound.2. After releasing the button, you will hear three short beeps, indicating that the voice module has entered configuration mode. (For details, see the voice module operation manual) <p>④ Block the voice module</p> <ol style="list-style-type: none">1. Press and hold the added switch button until hearing the fourth beep sound.	<ol style="list-style-type: none">2. After releasing the button, you will hear three four beeps indicating that the voice module has been blocked. <p>⑤ Height setting</p> <ol style="list-style-type: none">1. Press and hold the switch button until hearing the fifth short beep sound.2. After releasing the button, you will hear a long beep sound indicating that the height setting has taken effect. <p>⑥ Switch between quick/slow press of the unlock button on remote key</p> <ol style="list-style-type: none">1. Press and hold the added tailgate switch button until hearing the sixth short beep sound.2. After releasing the button, you will hear a long beep sound and a short beep sound indicating that the switch between quick press and slow press of the unlock button has taken effect. <p>⑦ Switch between pressing the unlock button twice/three times</p> <ol style="list-style-type: none">1. Press and hold the switch button until hearing the seventh short beep sound.2. After releasing the button, you will hear a long beep sound and two short beeps indicating that the switch between pressing the unlock button twice/three times has taken effect.	<p>⑧ Braking force increase (5 Settings)</p> <ol style="list-style-type: none">1. Press and hold the unlock button until hearing the eighth short beep sound.2. After releasing the button, you will hear a long beep sound and three short beeps indicating that the switch between pressing the unlock button twice/three times has taken effect. <p>⑨ Restore to factory settings</p> <ol style="list-style-type: none">1. Press and hold the unlock button until hearing the ninth short beep sound.2. After releasing the button, you will hear a long beep sound and four short beeps indicating that the restoration to the factory setting has taken effect. <p>4. Meanings of the buzzer sound:</p> <p>"Beep" once: Receiving an open/close or pause signal, the tailgate will immediately open/close or pause;</p> <p>"Beep" twice: The tailgate has been fully opened or closed;</p> <p>"Beep" three times: The resistance during opening or closing the tailgate is too large, and the intelligent anti-pinch has been turned on.</p>			