

Installation Manual

| | |
|------------------|-----------|
| Compatible Model | CBenz CML |
| Year | 2010 |



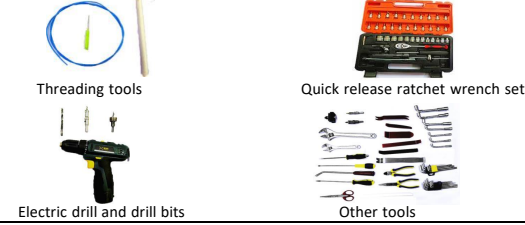
1. Points to note

- For safety and to ensure the proper use of product, please ask a professional technician to install. Do not disassemble and install it privately in case of damaging product and installation accidents.
- Please arrange each wire harness according to the wiring method in this manual, be sure to tie each wire harness to the vehicle's original wire harness with cable ties. Make sure the wire harnesses are not located at the fasteners or screw holes to avoid the wire harnesses crushed by the vehicle interior trim panel buckles and screws during the installation process.
- Because some of the wire harness terminals (as shown in the red ellipses below) are not inserted into the wire harness connectors during manufacture, please insert terminals into the wire harness connector first to avoid short circuit between terminals after the wire harnesses have been arranged, then connect other plugs of the wire harnesses (as shown in the blue ellipses below) with the original plugs.



- Check the function display of instrument panel before installation, whether the button of the vehicle is working properly, whether the doors and windows work properly while opening and closing, whether there are scratches on the internal and external surfaces of the vehicle; and report to the customers in a timely manner if there are any problems.
- During the process of disassembly and assembly, do not carry metal ornaments and other hard objects with you to prevent damage to the paintwork, seats and interior. Be sure to place the removed trim components properly to avoid scratching them.
- All the pictures in this manual are for reference only, vehicle models with different configurations may have different pictures, but the installation methods are the same.

2. Installation tools

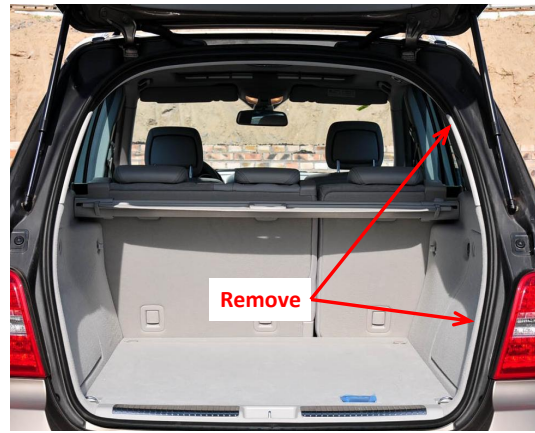


3. Product list

| No. | Name | QTY | Picture |
|-----|--------------------------------------|-------|---------|
| ① | Strut | 2 | |
| ② | ECU | 1 set | |
| ③ | Wire harness | 1 set | |
| ④ | Added tailgate switch | 1 | |
| ⑤ | Other parts (screws, brackets, etc.) | 1 | Omitted |



1. Remove the tailgate trim panels.



2. Remove the trim panels on the right side of the trunk.



3. Remove the original gas struts.



4. Install the electric struts, L on the left and R on the right (the first letter of the strut code), making sure the ends with wire harnesses are on the tailgate.



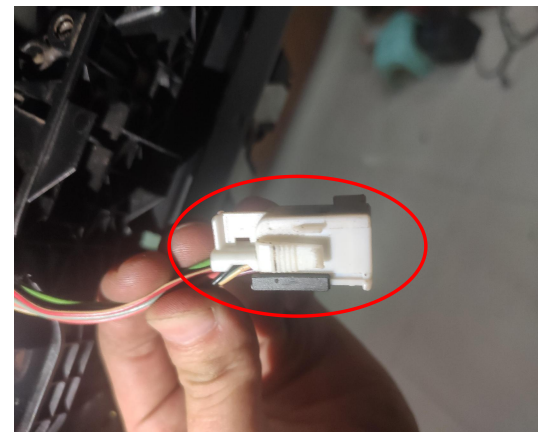
5. Drill a hole at the indicated location with a $\phi 21$ mm drill bit to allow the strut wire harness to pass through. Both sides are the same.



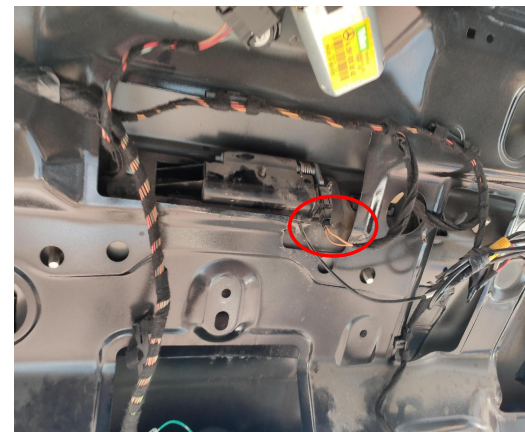
6. Thread the left and right strut wire harnesses through the drilled holes into the tailgate.



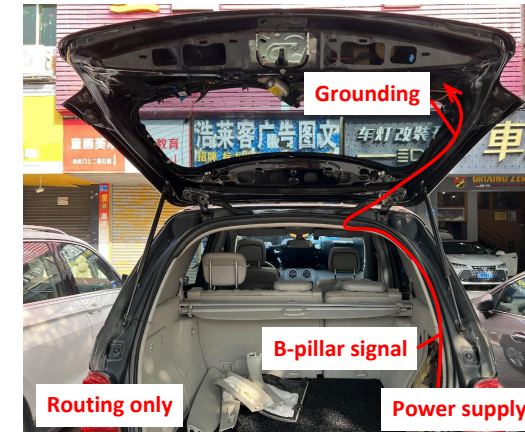
7. Plug the hole plugs on both sides.



8. Connect the plugs of lock signal harness to the plugs of original lock actuator.



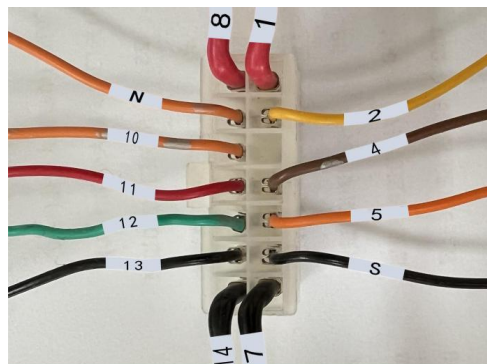
9. Connect the plugs of lock signal harness to the original tailgate switch.



10. Route the power harness.



11. Ground at the right side of the tailgate.

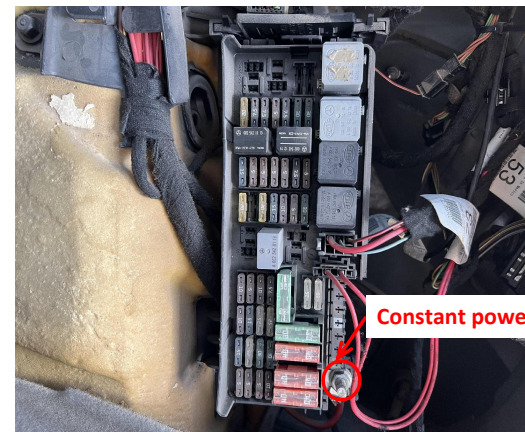


Note: For models with fewer than 14 wires, just insert them according to the corresponding lable or color.

12. Insert the power harness terminals into the connector according to the wire labels.



13. Connect the plugs of power harness to the plugs of unlock signal behind the fuse box.



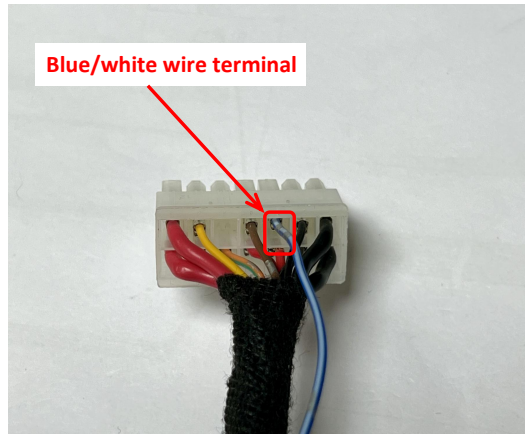
14. Connect the wire connector to the indicated location for power supply.



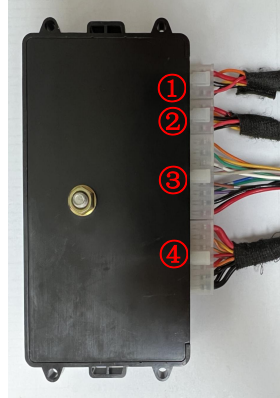
15. Drill a hole at the indicated location.



16. Install the ECU and secure it with a nut (the nut is located on ECU).



17. Insert the blue/white wire terminal of lock signal harness into the fifth slot of the power harness connector.



18. Insert the left and right strut wire harnesses ①②, lock signal harness ③, and power harness ④ into the ECU in sequence.



19. Press the added tailgate switch button to close the tailgate for initialization and test each function of the electric tailgate.



20. Remove the tailgate handle light and adjust the hole size to fit the added switch.



21. Connect the handle light to its plug and put it inside the tailgate trim panel.



22. Install the added tailgate switch and install all trim panels back.

Attention: If the tailgate keeps open for a long time, the lock actuator will enter the sleep mode. In this case, manually close the tailgate to awaken it.

5. System initialization method
 1. Press the added tailgate switch button to make the tailgate close automatically;
 2. Press the switch button outside the tailgate to open the tailgate and it will make a long sound of "beep".
 3. The system initialization is complete.

6. Instructions for the electric tailgate
 1. Methods to open and close the tailgate:
 ● Press the unlock button on the remote key 3 times;
 ● Press the unlock button at the driver's area 3 times;
 ● Press the original tailgate switch button;
 ● Press the added tailgate switch button.

2. Method to pause the tailgate:
 During the operation of the tailgate, press the button with any of the above methods, and the tailgate will be paused. Press again, and the tailgate will move in reverse.

3. Method to memorize the height:
 Open the tailgate to the height you want to set, long press the added tailgate switch, and release the switch after hearing a long "beep ----". The height memory is complete.
 Tip: During the operation of the tailgate, pause the tailgate, and then push the tailgate to the ideal height with your hand.

4. Meanings of the buzzer sound:
 "Beep" once: Receiving an open/close or pause signal, the tailgate will immediately open/close or pause;
 "Beep" twice: The tailgate has been fully opened or closed;
 "Beep" three times: The resistance during opening or closing the tailgate is too large, and the intelligent anti-pinch has been turned on;
 Long sound of "beep": The height memory is complete.