

# ET-HV30S-4.8K High-Voltage Stacked Energy Storage



- **Safer**

Cobalt Free Lithium Iron Phosphate (LFP) Battery, safety and long lifespan, high efficiency and high-energy density. Built-in Intelligent BMS, providing complete protection.

- **Beautiful**

Home design style, integrated stack, no wiring naked between the battery pack, thin type can stick to the wall, beautiful and generous.

- **Reliable**

Supports high discharge power, IP65, wide temperature range: 0°C to 55°C.

- **Flexible**

Modular design, single set can expand to 5units (24kWh), Max. 4 sets in parallel (96kWh capacity). Integrated WiFi module, can monitor and upgrade remotely. Compatible with multi-brand frequency inverter communication.

- **Eco-Friendly**

Use environmental protection materials, the whole module non-toxic,pollution-free.

- **Quality Assurance**

Five years free warranty, additional five years of technical support.on-free.

# Technical Parameters

Model	ET-HV30S-4.8K			
<b>Main Parameter</b>				
Cell Chemistry	LiFePO4			
Module Energy (kWh)	4.8			
Module Nominal Voltage (V)	96			
Module Capacity (Ah)	50			
Module Dimension (W/D/H,mm)	660*205*392			
Module Weight Approximate (kg)	50			
Battery Module Qty In Series (Optional)	2	3	4	5
System Nominal Voltage (V)	192	288	384	480
System Operating Voltage (V)	168-216	252-324	336-432	420-540
System Energy (kWh)	9.6	14.4	19.2	24
System Usable Energy (kWh)	8.64	12.96	17.28	21.6
Charge/Discharge Current(A)	Recommend: 25 Max: 50			
Working Temperature (°C)	0~50			
Cooling Mode	Natural Cooling			
Communication Port	CAN/RS485			
Humidity	5%~95%RH			
Altitude	<2000m			
IP Rating of Enclosure	IP65			
Dimension (W/D/H,mm)	660*205*1146	660*205*1538	660*205*1930	660*205*2322
Weight Approximate (kg)	120	170	220	270
Installation Location	Stack Mounting			
Storage Temperature (°C)	0~35			
Recommend Depth of Discharge	90%			
Cycle Life	≥6000 times			
Warranty	10 years (5+5)			
Certification	CE, MSDS, UN38.3			
The current is affected by temperature and SOC				

# HIGH VOLTAGE WIFI MONITORING



## MODEL: (ALL BATTERY WITH PACE BMS)

Together with our BMS supplier UDAN, we developed a battery-built-in WiFi monitoring device that supports local Bluetooth and WiFi remote connection methods.

Support switching between Chinese and English.

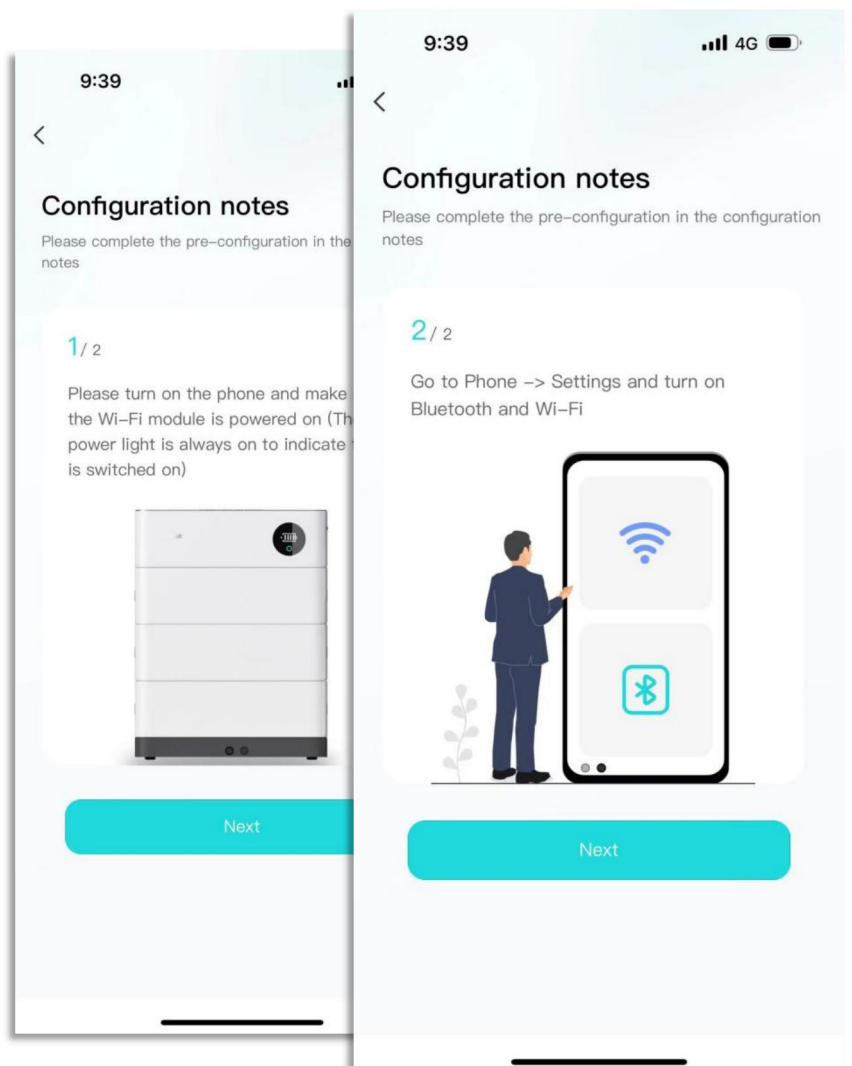
### Preparation before distribution:

Ensure that the device is on, turn on the mobile phone Bluetooth and wireless LAN functions.

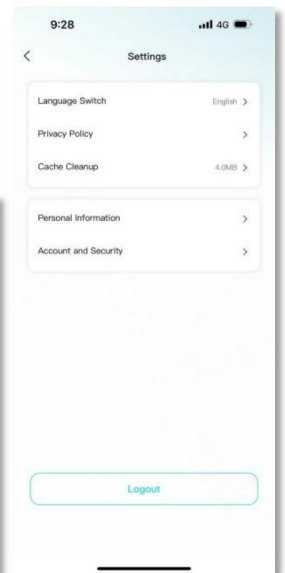
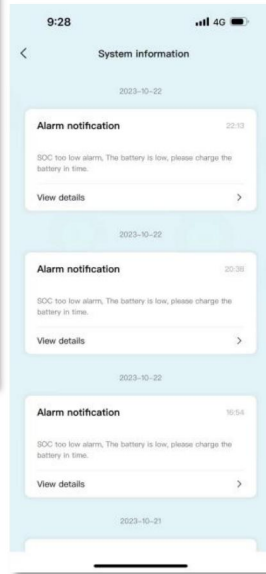
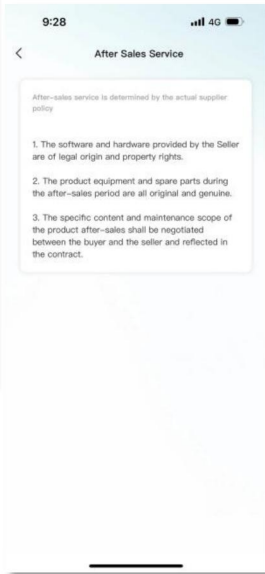
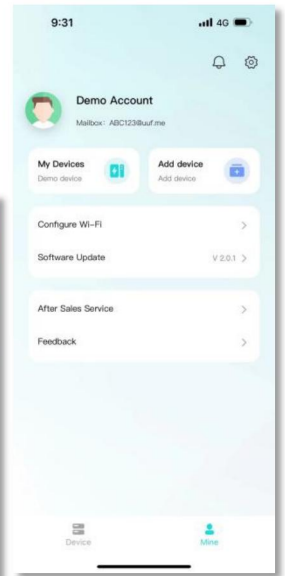
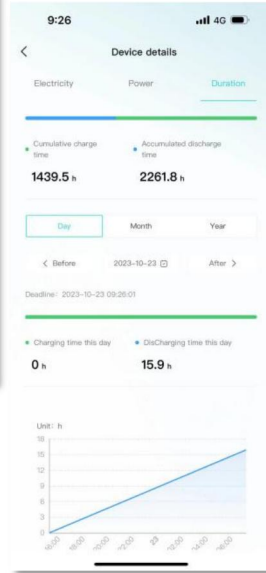
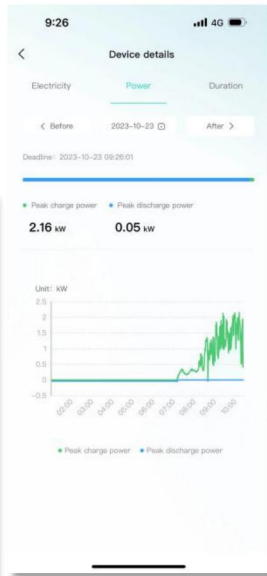
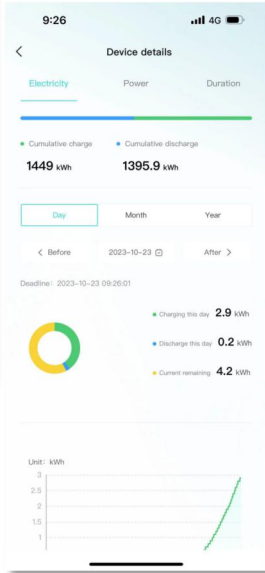
**Connected devices:** The current App supports Bluetooth search, device scanning, and manual input of SN code .

**Connect to WiFi:** After the device is connected, enter the WiFi connection process.

- Select the WiFi you want to use and click the "Connect" button. Enter the WiFi password and click the "Finish" button to distribute the network.



# APP INTERFACE DISPLAY



# COMMUNICATION SUPPORT INVERTER

## Low Voltage

Deye 德業®

GROWATT  
古 瑞 瓦 特

SGFAR

solis

Afore

NEXT  
Next Power

MEGAREVO

SUMRY

LU X POWER<sup>TEK</sup>

SOROTEC®  
Power Solutions Expert

TBB POWER

SRNE 碩日

GOODWE

Voltronic Power  
Advancing Power



## High Voltage

GROWATT  
古 瑞 瓦 特

SGFAR

GOODWE

ATESS

MEGAREVO

Afore

KOYOE

solis

Deye 德業®

LU X POWER<sup>TEK</sup>

