

# ET-HV51.2V200Ah Small Commercial Energy Storage



- **Safer**

Cobalt Free Lithium Iron Phosphate (LFP) Battery, safety and long lifespan, high efficiency and high-energy density. Built-in Intelligent BMS, providing complete protection.

- **Flexible**

LiFePO4 battery storage+ hybrid inverter (optional), single set of battery module number optional (6-11pcs, 60-110kWh capacity), Max. 10 sets of integrated cabinets in parallel.

- **Reliable**

IP65, integrated fire protection device; hot and cold air conditioner + fan cooling device, intelligent adjustment of internal temperature, wide temperature range: -20°C to 60°C, support outdoor installation.

- **High Performance**

Maximum discharge current of 100A, high discharge rate, can meet more load use at the same cost.

- **Eco-Friendly:**

Use environmental protection materials, the whole module non-toxic, pollution-free.

- **Quality Assurance**

Five years free warranty, additional five years of technical support.

# Technical Parameters

Model	ET-HV51.2V200Ah					
Main Parameter						
Cell Chemistry	LiFePO4					
Module Energy (kWh)	10.2					
Module Nominal Voltage (V)	51.2					
Module Capacity (Ah)	200					
Module Dimension (W/D/H,mm)	383*605*240					
Module Weight Approximate (kg)	77					
Battery Module Qty In Series (Optional)	6	7	8	9	10	11
System Nominal Voltage (V)	307.2	358.4	409.6	460.8	512	563.2
System Operating Voltage (V)	278.4-345.6	324.8-403.2	371.2-460.8	417.6-518.4	464-576	510.4-633.6
System Energy (kWh)	61.44	71.68	81.92	92.16	102.4	112.64
System Usable Energy (kWh)	55.3	64.51	73.73K	82.94	92.16	101.38
Charge/Discharge Current(A)	Recommend: 50 Max: 100					
Working Temperature (°C)	-20~60					
Cooling Mode	Air Conditioner					
Communication Port	CAN/RS485					
Humidity	5%~85%RH					
Altitude	<2000m					
IP Rating of Enclosure	IP65					
Dimension (W/D/H,mm)	1394*1015**2164.5					
Weight Approximate (kg)	868	946	1024	1102	1180	1258
Installation Location	Integrated cabinet Installation					
Storage Temperature (°C)	0~35					
Recommend Depth of Discharge	90%					
Cycle Life	≥6000 times					
Warranty	10 years (5+5)					
Certification	UN38.3,MSDS,CE,ROHS,IEC62619					
The current is affected by temperature and SOC						

# HIGH VOLTAGE WIFI MONITORING



## MODEL: (ALL BATTERY WITH PACE BMS)

Together with our BMS supplier UDAN, we developed a battery-built-in WiFi monitoring device that supports local Bluetooth and WiFi remote connection methods.

Support switching between Chinese and English.

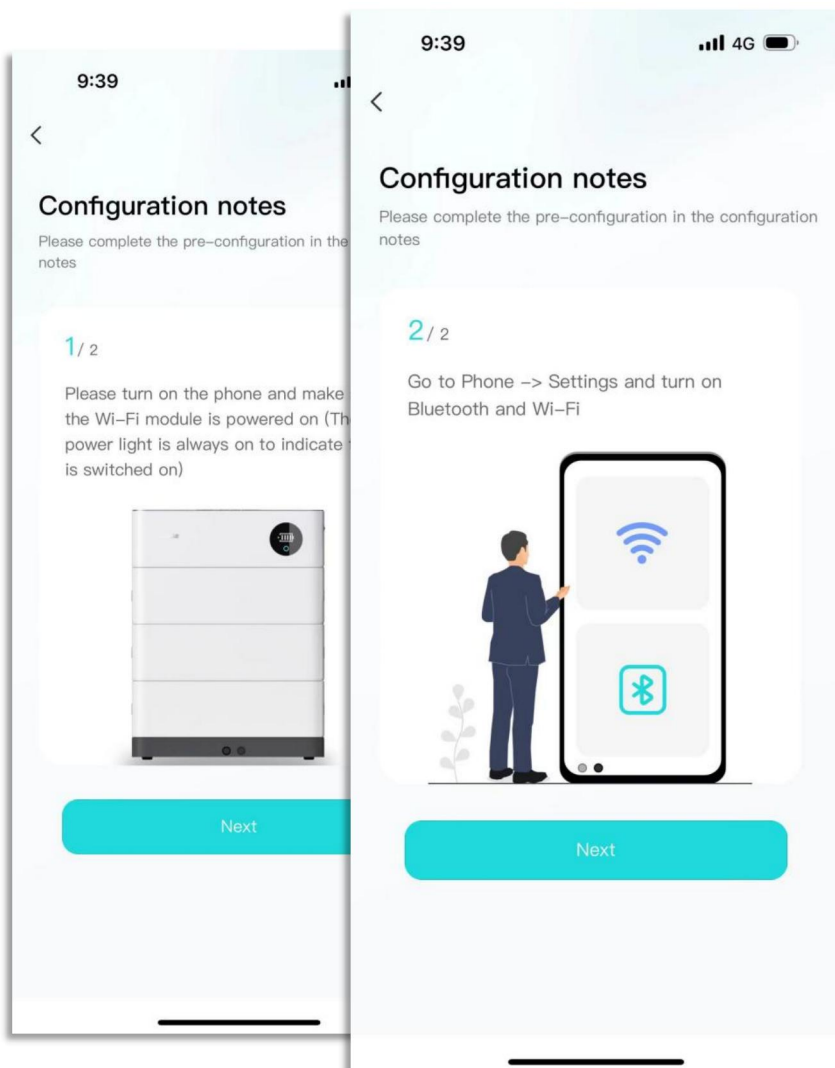
### Preparation before distribution:

Ensure that the device is on, turn on the mobile phone Bluetooth and wireless LAN functions.

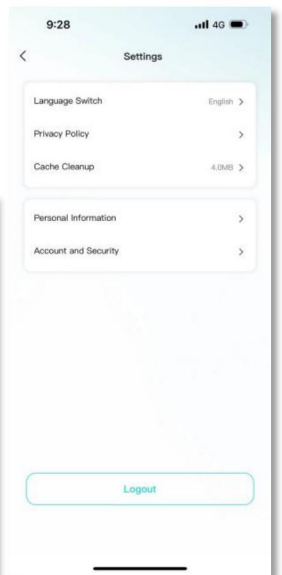
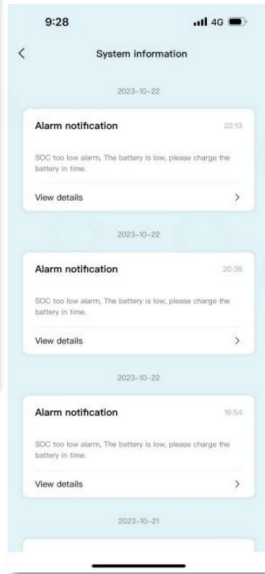
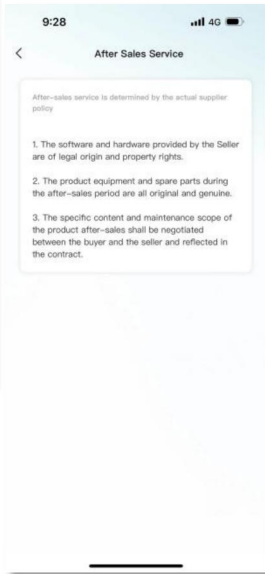
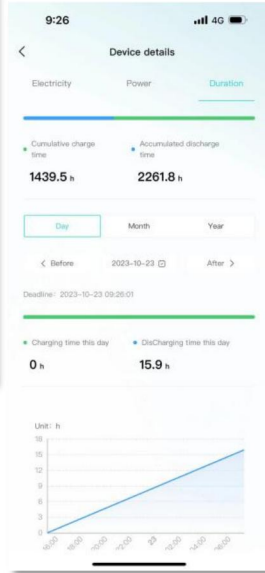
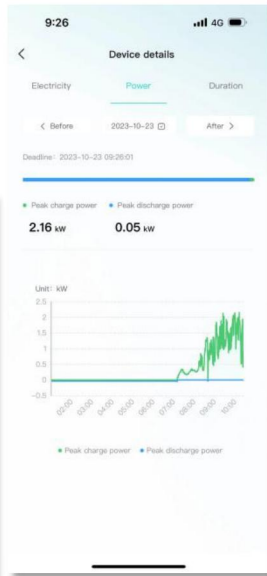
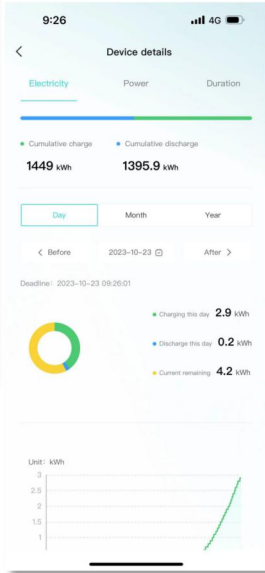
**Connected devices:** The current App supports Bluetooth search, device scanning, and manual input of SN code .

**Connect to WiFi:** After the device is connected, enter the WiFi connection process.

- Select the WiFi you want to use and click the "Connect" button. Enter the WiFi password and click the "Finish" button to distribute the network.



# APP INTERFACE DISPLAY



# COMMUNICATION SUPPORT INVERTER

## Low Voltage

Deye 德業®

GROWATT  
古 瑞 瓦 特

SGFAR

solis

Afore

NEXT  
Next Power

MEGAREVO

SUMRY

LU X POWER<sup>TEK</sup>

SOROTEC®  
Power Solutions Expert

TBB POWER

SRNE 碩日

GOODWE

Voltronic Power  
Advancing Power



## High Voltage

GROWATT  
古 瑞 瓦 特

SGFAR

GOODWE

ATESS

MEGAREVO

Afore

KOYOE

solis

Deye 德業®

LU X POWER<sup>TEK</sup>

