

ET-51.2V280Ah-HV Rack/Cabinet Energy Storage



- **Reliable**

Lithium Iron Phosphate (LFP) Battery, safety, high density, small self-discharge, no memory effect, etc. Equipped with protective cut-off switch.

- **Flexible**

Modular design, single set can expand to 17units (243kWh capacity).

Multiple battery units can be stacked, small footprint, low economic cost.

- **Smart**

Equipped with BMS management system, voltage, current, temperature collection, intelligent adjustment of charge and discharge power. Equipped WIFI module, can monitor remotely.

Fan cooling system, with cooling shell, effectively reduce the battery heat.

- **Cooperation**

Supports customization, OEM/ODM.

- **Quality Assurance**

Five years free warranty, additional five years of technical support.

Technical Parameters

Model	ET-51.2V280Ah-HV										
Main Parameter											
Cell Chemistry	LiFePO4										
Module Energy	14.34 (kWh)										
Module Nominal Voltage	51.2 (V)										
Module Capacity	280 (Ah)										
Module Dimension	498*798*227(W/D/H,mm)										
Module Weight Approximate	116(kg)										
Battery Module Qty In Series	8 (Optional)	9 (Optional)	10 (Optional)	11 (Optional)	12 (Optional)	13 (Optional)	14 (Optional)	15 (Optional)	16 (Optional)	17 (Optional)	
System Nominal Voltage	409.6 (V)	460.8 (V)	512 (V)	563.2 (V)	614.4 (V)	665.6 (V)	716.8 (V)	768 (V)	819.2 (V)	870.4 (V)	
System Operating Voltage	371.2~460.8 (V)	417.6~518.4 (V)	464~576 (V)	510.4~633.6 (V)	556.8~691.2 (V)	603.2~748.8 (V)	649.6~806.4 (V)	696~864 (V)	742.4~921.6 (V)	788.8~979.2 (V)	
System Energy	114.69 (kWh)	129.02 (kWh)	143.36 (kWh)	157.7 (kWh)	172.03 (kWh)	186.37 (kWh)	200.7 (kWh)	215.04 (kWh)	229.38 (kWh)	243.71 (kWh)	
System Usable Energy (kWh)	103.22 (90%DOD)	116.12 (90%DOD)	129.02 (90%DOD)	141.93 (90%DOD)	154.83 (90%DOD)	167.73 (90%DOD)	180.63 (90%DOD)	193.54 (90%DOD)	206.44 (90%DOD)	219.34 (90%DOD)	
Charge/Discharge Current	Recommend: 140(A) Max: 170(A)										
Working Temperature	-10~55(°C)										
Cooling Mode	Fan Cooling										
Communication Port	CAN/RS485										
Humidity	5%~95%RH										
Altitude	≤2000m										
IP Rating of Enclosure	IP20										
Dimension (W/D/H,mm)	1048*831*1281	1048*831*1281	1048*831*1531	1048*831*1531	1048*831*1781	1048*831*1781	1048*831*2031	1048*831*2031	572*831*1531	1572*831*1531	
Weight Approximate	1140(kg)	1250(kg)	1360(kg)	1470(kg)	1580(kg)	1690(kg)	1800(kg)	1910(kg)	2030(kg)	2140(kg)	
Installation Location	Iron Frame Mounting										
Storage Temperature	0~35(°C)										
Recommend Depth of Discharge	0.9										
Cycle Life	≥8000 times										
Warranty	10 years (5+5)										
Certification	UN38.3,MSDS			UN38.3,MSDS,CE				UN38.3,MSDS			
The current is affected by temperature and SOC											

HIGH VOLTAGE WIFI MONITORING



MODEL: (ALL BATTERY WITH PACE BMS)

Together with our BMS supplier UDAN, we developed a battery-built-in WiFi monitoring device that supports local Bluetooth and WiFi remote connection methods.

Support switching between Chinese and English.

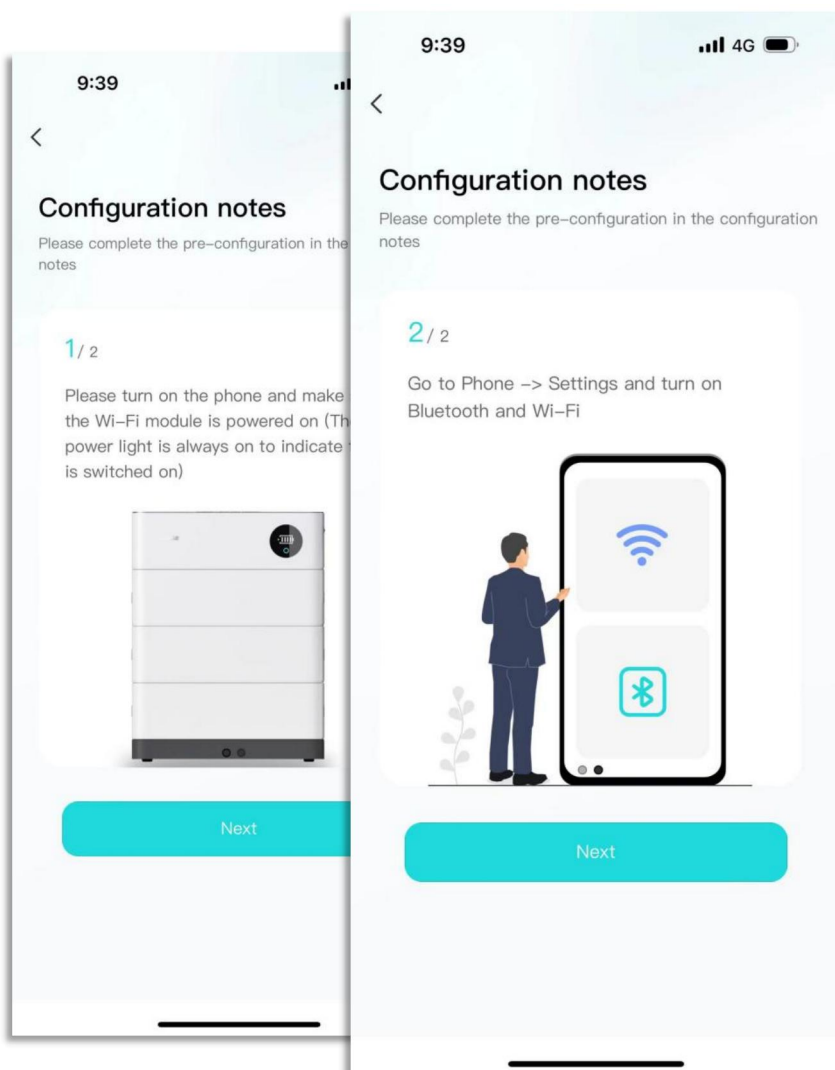
Preparation before distribution:

Ensure that the device is on, turn on the mobile phone Bluetooth and wireless LAN functions.

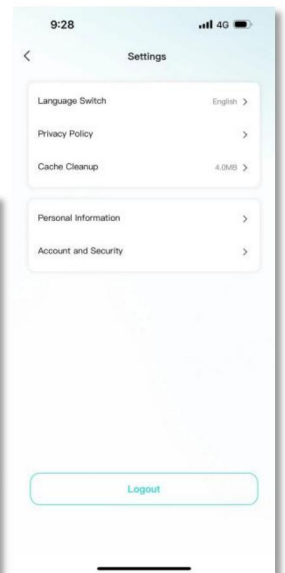
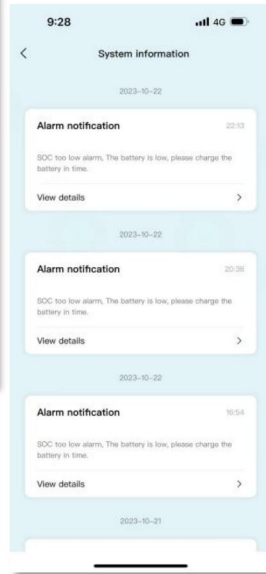
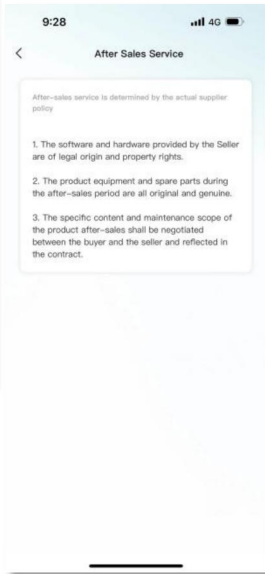
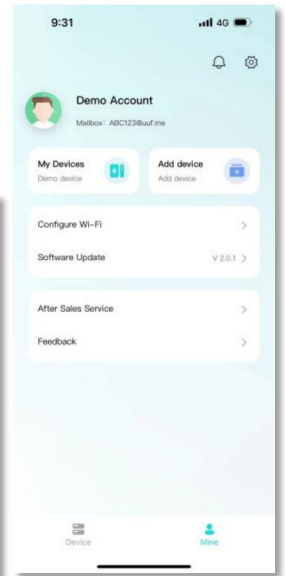
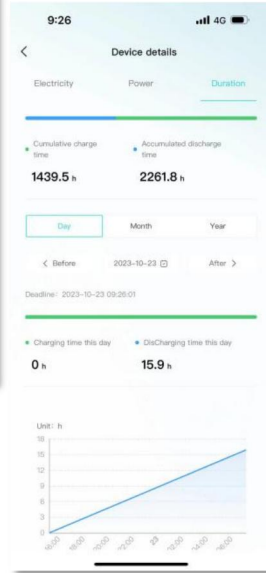
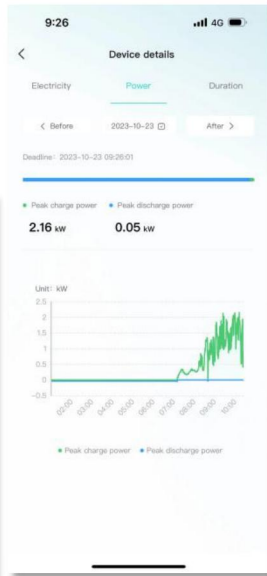
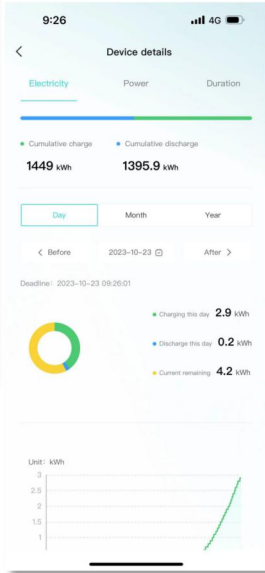
Connected devices: The current App supports Bluetooth search, device scanning, and manual input of SN code .

Connect to WiFi: After the device is connected, enter the WiFi connection process.

- Select the WiFi you want to use and click the "Connect" button. Enter the WiFi password and click the "Finish" button to distribute the network.



APP INTERFACE DISPLAY



COMMUNICATION SUPPORT INVERTER

Low Voltage

Deye 德業®

GROWATT
古 瑞 瓦 特

SGFAR

solis

Afore

NEXT
Next Power

MEGAREVO

SUMRY

LU X POWER^{TEK}

SOROTEC®
Power Solutions Expert

TBB POWER

SRNE 碩日

GOODWE

Voltronic Power
Advancing Power



High Voltage

GROWATT
古 瑞 瓦 特

SGFAR

GOODWE

ATESS

MEGAREVO

Afore

KOYOE

solis

Deye 德業®

LU X POWER^{TEK}

