

ET-51.2V100Ah-HV Rack/Cabinet Energy Storage



- **Reliable**

Lithium Iron Phosphate (LFP) Battery, safety, high density, small self-discharge, no memory effect, etc. Equipped with protective cut-off switch..

- **Flexible**

Multiple capacity battery packs are available to meet a wide range of energy storage needs. Single set can expand to 17units (85kWh), Max. 4 sets in parallel (340kWh capacity). Simple installation, rack stacking or battery cabinet installation, small footprint, low economic cost.

- **Smart**

Equipped with BMS management system, voltage, current, temperature collection, intelligent adjustment of charge and discharge power.

Equipped display and SOC indicator light, easy to observe the real-time status of the battery, switch communication protocols.

Equipped WIFI module, can monitor, adjust and upgrade from mobile APP remotely.

- **Cooperation**

Supports customization, OEM/ODM.

- **Quality Assurance**

Five years free warranty, additional five years of technical support.

Technical Parameters

Model	ET-51.2V100Ah-HV						
Main Parameter							
Cell Chemistry	LiFePO4						
Module Energy	5.12 (kWh)						
Module Nominal Voltage	51.2 (V)						
Module Capacity	100 (Ah)						
Module Dimension	355*567*150 (W/D/H,mm)						
Module Weight	42.5 (kg)						
Approximate							
Battery Module Qty In Series	4 (Optional)	5 (Optional)	6 (Optional)	7 (Optional)	8 (Optional)	9 (Optional)	10 (Optional)
System Nominal Voltage	204.8 (V)	256 (V)	307.2 (V)	358.4 (V)	409.6 (V)	460.8 (V)	512 (V)
System Operating Voltage	185.6~230.4 (V)	232~288 (V)	278.4~345.6 (V)	324.8~403.2 (V)	371.2~460.8 (V)	417.6~518.4 (V)	464~576 (V)
System Energy	20.48 (kWh)	25.6 (kWh)	30.72 (kWh)	35.84 (kWh)	40.96 (kWh)	46.08 (kWh)	51.2 (kWh)
System Usable Energy (kWh)	18.43(90%DOD)	23.04 (90%DOD)	27.65 (90%DOD)	32.26 (90%DOD)	36.86 (90%DOD)	41.47 (90%DOD)	46.08 (90%DOD)
Charge/Discharge Current	Recommend: 50(A) Max: 50(A)						
Working Temperature	0~60 (°C)						
Cooling Mode	Natural Cooling						
Communication Port	CAN/RS485						
Humidity	5%~85%RH						
Altitude	≤2000m						
IP Rating of Enclosure	IP21						
Dimension	355*567*830 (W/D/H,mm)	355*567*1000 (W/D/H,mm)	355*567*1170 (W/D/H,mm)	355*567*1340 (W/D/H,mm)	355*567*1510 (W/D/H,mm)	355*567*1680 (W/D/H,mm)	355*567*1850 (W/D/H,mm)
Weight Approximate	185(kg)	227.5(kg)	270(kg)	312.5(kg)	355(kg)	397.5(kg)	440(kg)
Iron Frame Dimension	355*567*1370(W/D/H,mm)			355*567*2050(W/D/H,mm)			
Iron Frame Weight Approximate	45 (kg)			56 (kg)			
Installation Location	Stack Mounting, Iron Frame Mounting						
Storage Temperature	0~35(°C)						
Recommend Depth of Discharge	0.9						
Cycle Life	≥6000 times						
Warranty	10 years (5+5)						
Certification	UN38.3,MSDS,CE,ROHS						
The current is affected by temperature and SOC							

HIGH VOLTAGE WIFI MONITORING



MODEL: (ALL BATTERY WITH PACE BMS)

Together with our BMS supplier UDAN, we developed a battery-built-in WiFi monitoring device that supports local Bluetooth and WiFi remote connection methods.

Support switching between Chinese and English.

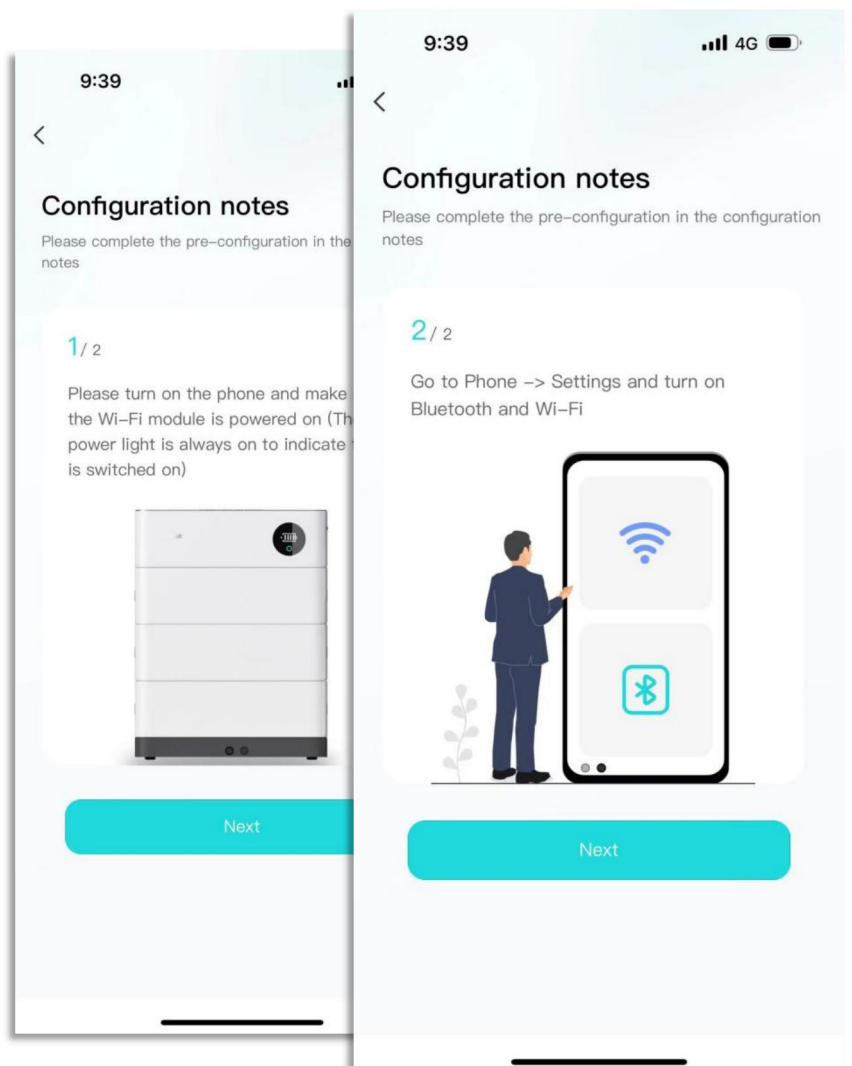
Preparation before distribution:

Ensure that the device is on, turn on the mobile phone Bluetooth and wireless LAN functions.

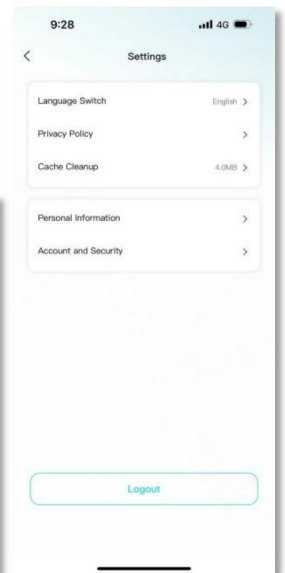
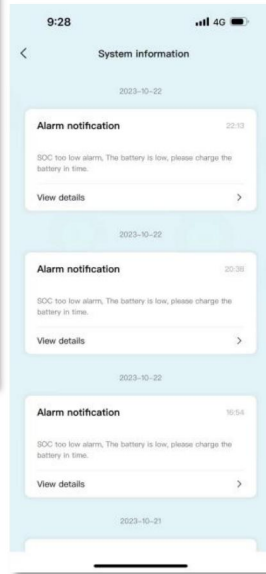
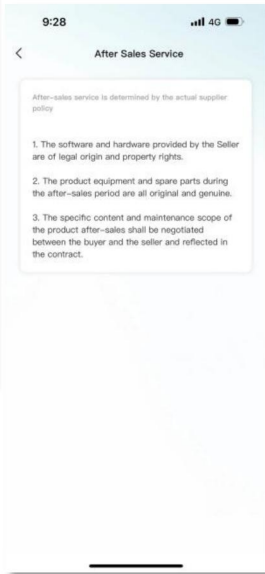
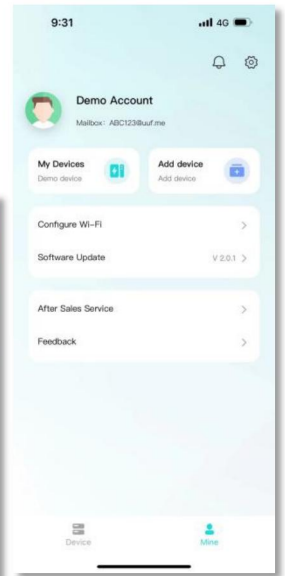
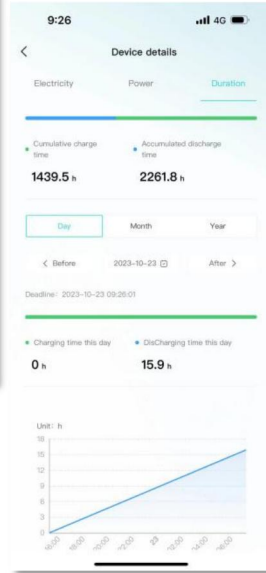
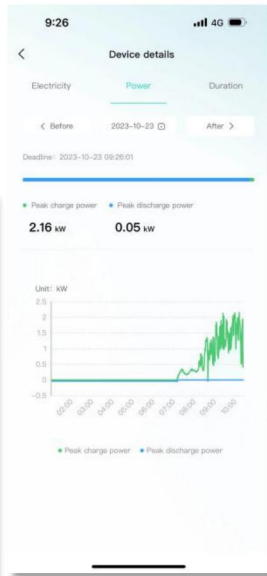
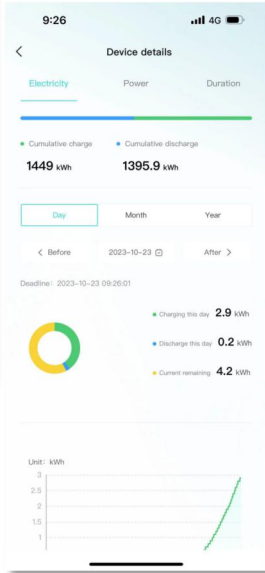
Connected devices: The current App supports Bluetooth search, device scanning, and manual input of SN code .

Connect to WiFi: After the device is connected, enter the WiFi connection process.

- Select the WiFi you want to use and click the "Connect" button. Enter the WiFi password and click the "Finish" button to distribute the network.



APP INTERFACE DISPLAY



COMMUNICATION SUPPORT INVERTER

Low Voltage

Deye 德業®

GROWATT
古 瑞 瓦 特

SGFAR

solis

Afore

NEXT
Next Power

MEGAREVO

SUMRY

LU X POWER^{TEK}

SOROTEC®
Power Solutions Expert

TBB POWER

SRNE 碩日

GOODWE

Voltronic Power
Advancing Power



High Voltage

GROWATT
古 瑞 瓦 特

SGFAR

GOODWE

ATESS

MEGAREVO

Afore

KOYOE

solis

Deye 德業®

LU X POWER^{TEK}

