

ET-CESS-100KW/174KWh Rack/Cabinet Energy Storage



- **"One-stop" work style**

Hybrid inverter+ LiFePO4 battery storage+ MPPT+Diesel generator (optional), one-stop function configuration.

- **Flexible**

Max. supported 3sets in parallel (522kWh capacity).

- **Reliable**

Lithium Iron Phosphate (LFP) Battery, free of cobalt and other flammable and explosive elements, DOD up to 90%, high economic effect.

Integrated fire protection device; hot and cold air conditioner + fan cooling device, intelligent adjustment of internal temperature.

- **Smart:**

Equipped with BMS management system, voltage, current, temperature collection, intelligent adjustment of charge and discharge power.

EMS intelligently monitors the entire cabinet integrated system status.

- **Eco-Friendly**

Use environmental protection materials, the whole module non-toxic, pollution-free.

- **Quality Assurance**

Five years free warranty, additional five years of technical support.

Technical Parameters

Model	ET-CES-100KW/174KWh			
Main Parameter				
Battery				
Cell Chemistry	LiFePO4			
Module Energy (kWh)	15.82			
Module Nominal Voltage (V)	76.8			
Module Capacity (Ah)	206			
Module Dimension (W/D/H,mm)	482*780*222			
Module Weight Approximate (kg)	115			
Battery Module Qty In Series	11			
System Nominal Voltage (V)	844.8			
System Operating Voltage (V)	765.6~950.4			
System Energy (kWh)	174			
System Usable Energy (kWh)	156.6 (90% DOD)			
Charge/Discharge Current(A)	Recommend: 80 Max: 100			
Other		PV		
Working Temperature (°C)	-20~60	Max. PV Power	30KW	50KW/100KW
Cooling Mode	Air Conditioner	Max. PV Voltage	650Vdc	650Vdc
Communication Port	CAN/RS485/Ethernet	MPPT Voltage Range	300V~650Vdc	300V~650Vdc
Humidity	5%~95%RH	Max. PV Current	60A	100A
Altitude	<3000m	On-grid/Off-grid		
IP Rating of Enclosure	IP54	Rated Power	100KW	
Dimension (W/D/H,mm)	1715*1228*2175	Rated Voltage	400Vac/230Vac(L1/L2/L3/N)	
Weight Approximate (kg)	2150	Rated Frequency	50Hz/60Hz	
Installation Location	Integrated cabinet Installation	Max. AC Current	163A	
Storage Temperature (°C)	0~35	AC Diesel generators(Optional)		
Recommend Depth of Discharge	0.9	Rated Power	50KW	
Cycle Life	≥5000 times	Rated Voltage	400Vac/230Vac(L1/L2/L3/N)	
Warranty	10 years (5+5)	Rated Frequency	50Hz/60Hz	
Certification	UN38.3,MSDS	Max. AC Current	75A	
The current is affected by temperature and SOC				

HIGH VOLTAGE WIFI MONITORING



MODEL: (ALL BATTERY WITH PACE BMS)

Together with our BMS supplier UDAN, we developed a battery-built-in WiFi monitoring device that supports local Bluetooth and WiFi remote connection methods.

Support switching between Chinese and English.

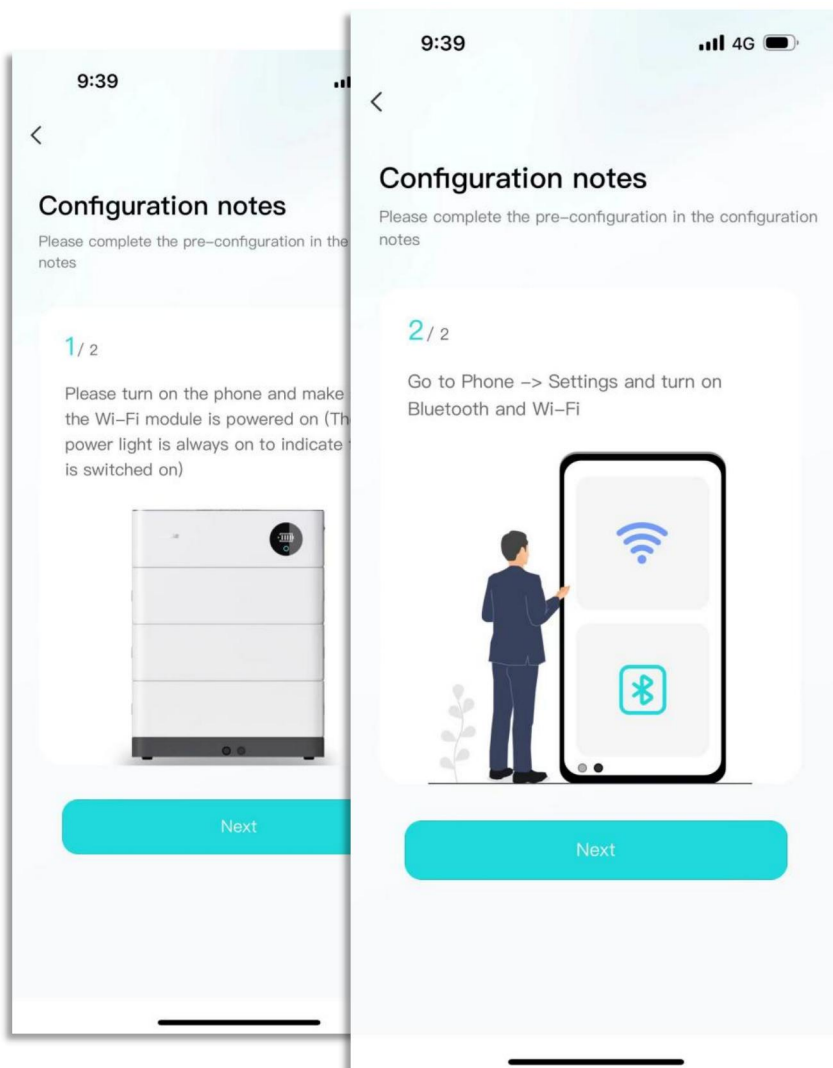
Preparation before distribution:

Ensure that the device is on, turn on the mobile phone Bluetooth and wireless LAN functions.

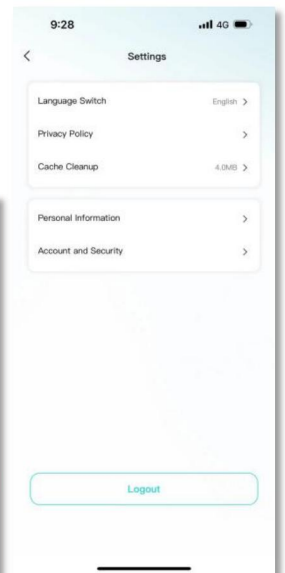
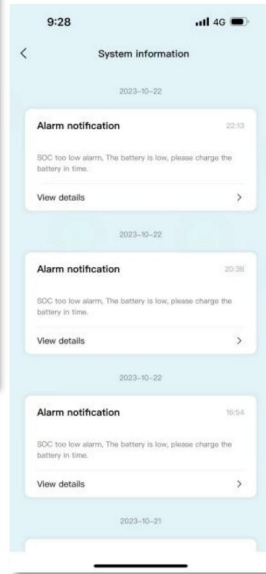
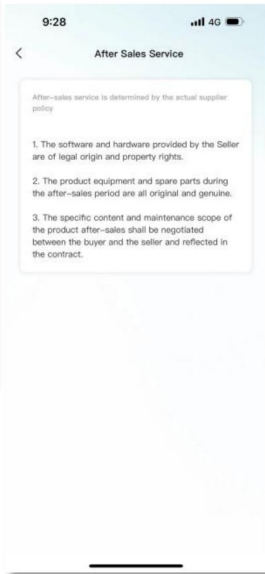
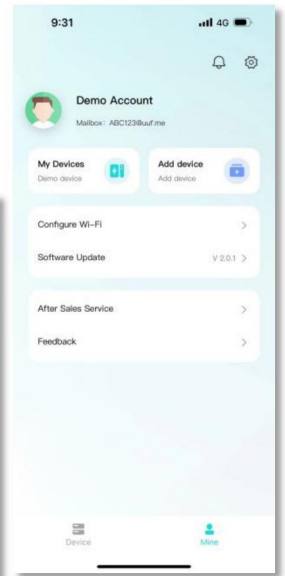
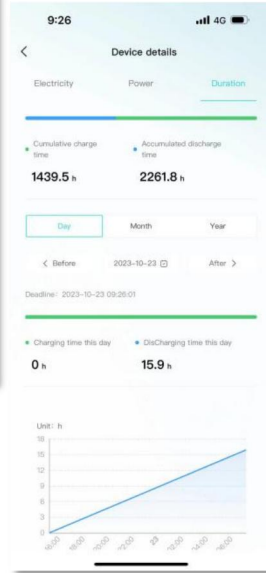
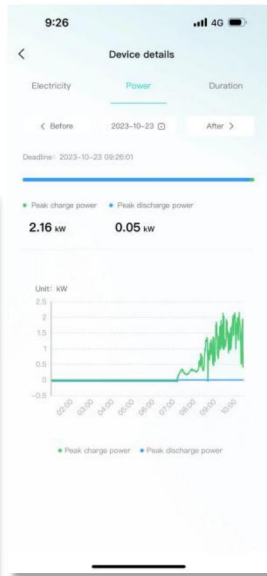
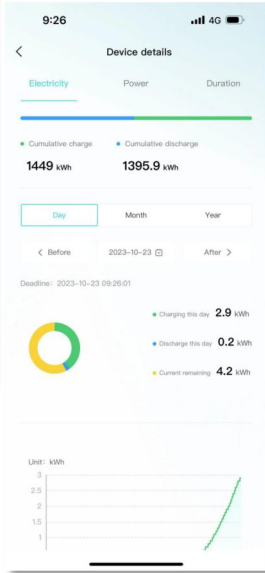
Connected devices: The current App supports Bluetooth search, device scanning, and manual input of SN code.

Connect to WiFi: After the device is connected, enter the WiFi connection process.

- Select the WiFi you want to use and click the "Connect" button. Enter the WiFi password and click the "Finish" button to distribute the network.



APP INTERFACE DISPLAY



COMMUNICATION SUPPORT INVERTER

Low Voltage

Deye 德業®

GROWATT
古 瑞 瓦 特

SGFAR

solis

Afore

NEXT
Next Power

MEGAREVO

SUMRY

LU X POWER^{TEK}

SOROTEC®
Power Solutions Expert

TBB POWER

SRNE 碩日

GOODWE

Voltronic Power
Advancing Power



High Voltage

GROWATT
古 瑞 瓦 特

SGFAR

GOODWE

ATESS

MEGAREVO

Afore

KOYOE

solis

Deye 德業®

LU X POWER^{TEK}

