

# ET-51.2V200Ah-HV Rack/Cabinet Energy Storage



- **Reliable**

Lithium Iron Phosphate (LFP) Battery, safety, high density, small self-discharge, no memory effect, etc. Equipped with protective cut-off switch.

- **Flexible**

Multiple capacity battery packs are available to meet a wide range of energy storage needs. Single set can expand to 17units (170kWh), Max. 4 sets in parallel (680kWh capacity). Simple installation, rack stacking or battery cabinet installation, small footprint, low economic cost.

- **Smart**

Equipped with BMS management system, voltage, current, temperature collection, intelligent adjustment of charge and discharge power.

Equipped display and SOC indicator light, easy to observe the real-time status of the battery, switch communication protocols.

Equipped WIFI module, can monitor, adjust and upgrade from mobile APP remotely.

- **Cooperation**

Supports customization, OEM/ODM.

- **Quality Assurance**

Five years free warranty, additional five years of technical support.

# Technical Parameters

Model		ET-51.2V200Ah-HV						
Main Parameter								
Cell Chemistry	LiFePO4							
Module Energy	10.24(kWh)							
Module Nominal Voltage (V)	51.2							
Module Capacity (Ah)	200							
Module Dimension	383*605*240(W/D/H,mm)							
Module Weight Approximate	77(kg)							
Battery Module Qty In Series	4 (Optional)	5 (Optional)	6 (Optional)	7 (Optional)	8 (Optional)	9 (Optional)	10 (Optional)	
System Nominal Voltage	204.8(V)	256(V)	307.2(V)	358.4(V)	409.6(V)	460.8(V)	512(V)	
System Operating Voltage	185.6~230.4(V)	232~288(V)	278.4~345.6(V)	324.8~403.2(V)	371.2~460.8(V)	417.6~518.4(V)	464~576(V)	
System Energy	40.9 (kWh)	51.2 (kWh)	61.44 (kWh)	71.68 (kWh)	81.92 (kWh)	92.16 (kWh)	102.4 (kWh)	
System Usable Energy	36.86(90%DOD) (kWh)	46.08(90%DOD) (kWh)	55.3(90%DOD) (kWh)	64.51(90%DOD) (kWh)	73.73(90%DOD) (kWh)	82.94(90%DOD) (kWh)	92.16(90%DOD) (kWh)	
Charge/Discharge Current	Recommend: 80 (A) Max: 100 (A)							
Working Temperature	0~60 (°C)							
Cooling Mode	Natural Cooling							
Communication Port	CAN/RS485							
Humidity	5%~85%RH							
Altitude	≤2000m							
IP Rating of Enclosure	IP21							
Dimension	383*605*1190 (W/D/H,mm)	383*605*1450 (W/D/H,mm)	383*605*1710 (W/D/H,mm)	(383*2)*605*1020 (W/D/H,mm)	(383*2)*605*1190 (W/D/H,mm)	(383*2)*605*1280 (W/D/H,mm)	(383*2)*605*1450 (W/D/H,mm)	
Weight Approximate	323 (kg)	440 (kg)	477 (kg)	554 (kg)	631 (kg)	708 (kg)	785 (kg)	
Iron Frame Dimension	383*605*1880 (W/D/H,mm)			(383*2)*605*1880 (W/D/H,mm)				
Iron Frame Weight Approximate	64 (kg)			64*2 (kg)				
Installation Location	Stack Mounting, Iron Frame Mounting							
Storage Temperature	0~35(°C)							
Recommend Depth of Discharge	0.9							
Cycle Life	≥6000 times							
Warranty	10 years (5+5)							
Certification	UN38.3,MSDS,CE,ROHS,IEC62619							
The current is affected by temperature and SOC								

# HIGH VOLTAGE WIFI MONITORING



## MODEL: (ALL BATTERY WITH PACE BMS)

Together with our BMS supplier UDAN, we developed a battery-built-in WiFi monitoring device that supports local Bluetooth and WiFi remote connection methods.

Support switching between Chinese and English.

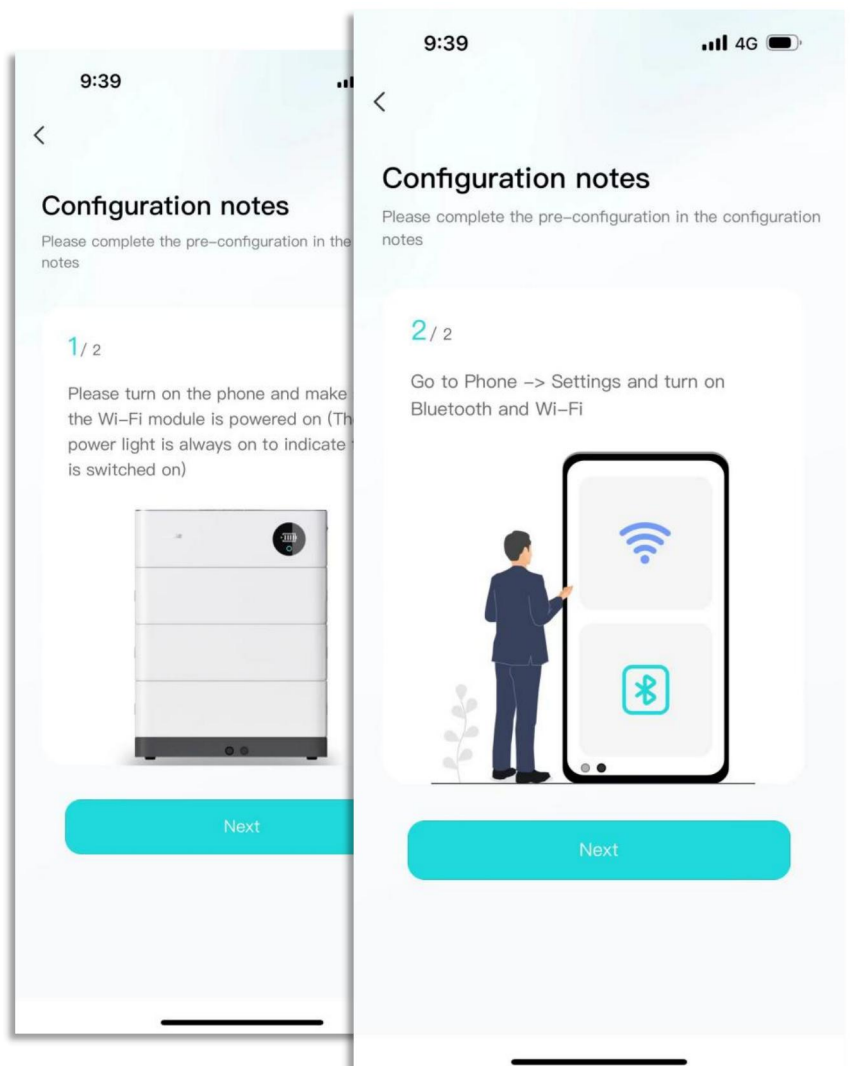
### Preparation before distribution:

Ensure that the device is on, turn on the mobile phone Bluetooth and wireless LAN functions.

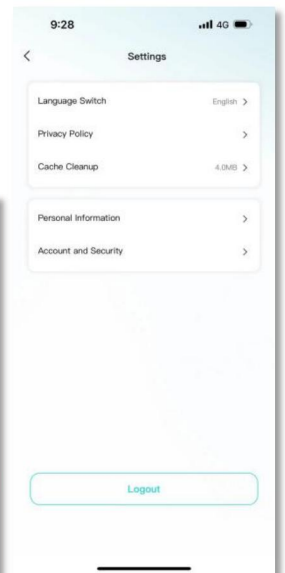
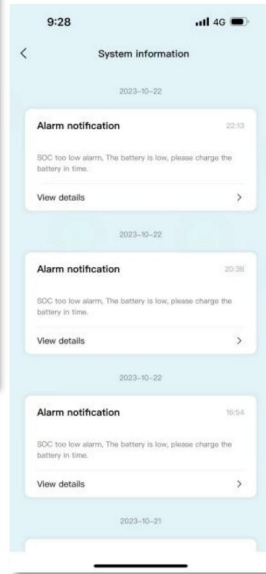
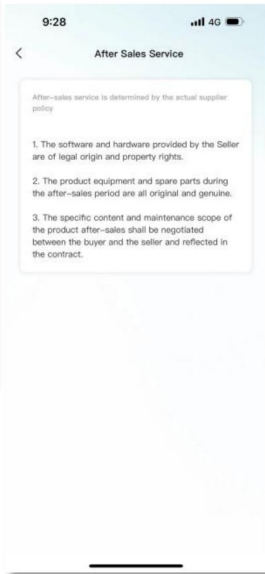
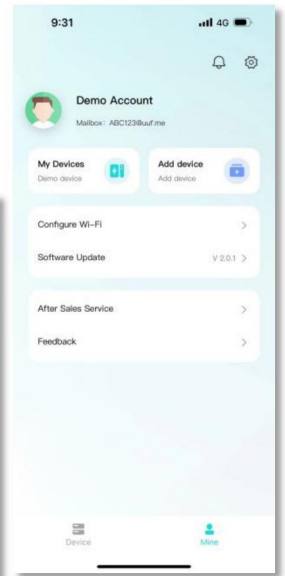
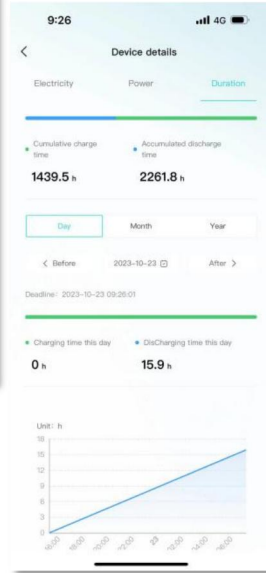
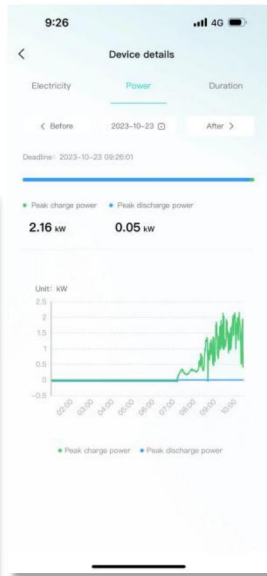
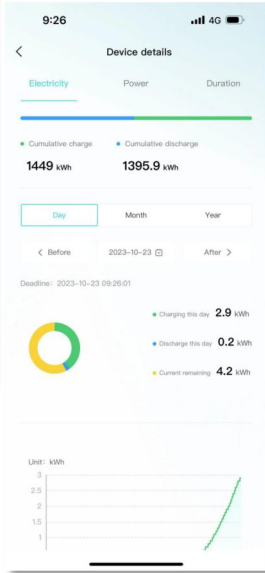
**Connected devices:** The current App supports Bluetooth search, device scanning, and manual input of SN code .

**Connect to WiFi:** After the device is connected, enter the WiFi connection process.

- Select the WiFi you want to use and click the "Connect" button. Enter the WiFi password and click the "Finish" button to distribute the network.



# APP INTERFACE DISPLAY



# COMMUNICATION SUPPORT INVERTER

## Low Voltage

Deye 德業®

GROWATT  
古 瑞 瓦 特

SGFAR

solis

Afore

NEXT  
Next Power

MEGAREVO

SUMRY

LU X POWER<sup>TEK</sup>

SOROTEC®  
Power Solutions Expert

TBB POWER

SRNE 碩日

GOODWE

Voltronic Power  
Advancing Power



## High Voltage

GROWATT  
古 瑞 瓦 特

SGFAR

GOODWE

ATESS

MEGAREVO

Afore

KOYOE

solis

Deye 德業®

LU X POWER<sup>TEK</sup>

